



#BeThe**ONE**WhoVotes

LEWISVILLE ISD **2024**

**BOND**

ONE VISION \* ONE LISD

*What's on the May 4 Ballot for LISD Voters?*



**PROP A**  
AQUATIC CENTERS



**PROP B**  
ATHLETICS & RECREATION



**PROP C**  
STADIUMS



EARLY VOTING:  
**APRIL 22-30**

ELECTION DAY:  
**MAY 4**

**WHAT'S  
INSIDE**

*Stay Informed!*

- ★ Official Ballot Language
- ★ Project Photos and Details
- ★ Tax Rate Information



[www.lisdbond.com](http://www.lisdbond.com)

Registered voters residing within Lewisville ISD boundaries will be asked to consider a total of three propositions that would generate funding to conduct maintenance, repairs and renovations at various athletics and recreation facilities across the district, as well as all five existing high school stadiums and the district's two existing Aquatic Centers.

## LISD residents will have the opportunity to cast their vote ☐ For or ☐ Against each of the propositions.



### PROP A: Aquatic Centers

Maintenance, repairs and renovations at the Eastside Aquatic Center and Westside Aquatic Center. This is not for new facilities.

#### The ballot will read:

THE ISSUANCE OF \$16,250,000 OF BONDS BY THE LEWISVILLE INDEPENDENT SCHOOL DISTRICT FOR IMPROVING, RENOVATING, REHABILITATING AND EQUIPPING THE EXISTING EASTSIDE AQUATIC CENTER AND WESTSIDE AQUATIC CENTER, AND NOT THE CONSTRUCTION OF NEW AQUATIC CENTERS, AND LEVYING THE TAX FOR PAYMENT OF PRINCIPAL AND INTEREST ON THE BONDS. THIS IS A PROPERTY TAX INCREASE.



### PROP B: Athletics & Recreation

Maintenance, repairs and renovations at athletics facilities consisting of locker rooms and field houses; tennis courts; baseball/softball facilities; middle school competition fields; high school practice fields; and concession areas.

#### The ballot will read:

THE ISSUANCE OF \$65,585,000 OF BONDS BY THE LEWISVILLE INDEPENDENT SCHOOL DISTRICT FOR CONSTRUCTING, IMPROVING, RENOVATING AND EQUIPPING ATHLETICS FACILITIES CONSISTING OF LOCKER ROOMS, CONCESSIONS AND FIELD HOUSE; TENNIS COURTS; BASEBALL / SOFTBALL FACILITIES AND PLAYING FIELD TURF REPLACEMENT, AND LEVYING THE TAX FOR PAYMENT OF PRINCIPAL AND INTEREST ON THE BONDS. THIS IS A PROPERTY TAX INCREASE.

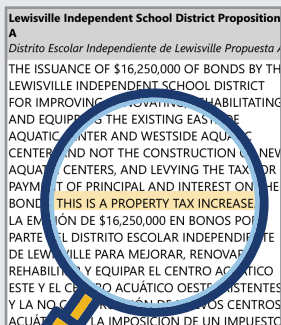


### PROP C: Stadiums

Maintenance, repairs and renovations to existing stadiums at Hebron High School, Flower Mound High School, The Colony High School, Marcus High School and Lewisville High School. This is not for new stadiums.

#### The ballot will read:

THE ISSUANCE OF \$19,999,000 OF BONDS BY THE LEWISVILLE INDEPENDENT SCHOOL DISTRICT FOR STADIUM IMPROVEMENTS AT THE EXISTING STADIUMS, AND NOT THE CONSTRUCTION OF NEW STADIUMS, AT HEBRON HIGH SCHOOL, FLOWER MOUND HIGH SCHOOL, THE COLONY HIGH SCHOOL, MARCUS HIGH SCHOOL AND LEWISVILLE HIGH SCHOOL, AND LEVYING THE TAX FOR PAYMENT OF PRINCIPAL AND INTEREST ON THE BONDS. THIS IS A PROPERTY TAX INCREASE.



## Ballot Language Explained

*If there will be no tax rate increase, why does the ballot include this statement: "this is a tax increase"?*

When you read your ballot you will see statements regarding a "property tax increase". The language regarding an increase is required by the state of Texas for all school districts to include on the ballot. Despite that requirement, even if approved, the LISD tax rate will not change.

The tax rate determines how much money people pay based on the value of their property. School districts set the tax rate, but the county appraisal district sets your property values.

The bond proposition authorizes the district to levy a tax to pay for the new bonds. Bond holders wouldn't purchase the bonds without this pledge. The tax increase clause is required by law because issuing new debt extends payments over a longer period of time. So while the projects in the bond can be completed with no tax rate increase, taxpayers will be helping LISD pay off those bonds for a longer period of time.

## Even if approved, the LISD tax rate will not change.

## Project Examples

Included in this bond proposal is the replacement of four high school stadium tracks, three of which were last replaced in '12, and one in '13. The average lifespan of a synthetic track is 10 years. Normal wear and aging causes the stadium synthetic tracks to rip or tear, requiring patchwork, and too many patches over time causes unlevel areas.

The seven non-stadium tracks included in Prop B have reached the end of their useful life, which is approximately 20 years for asphalt tracks and 10 years for synthetic surfaces.



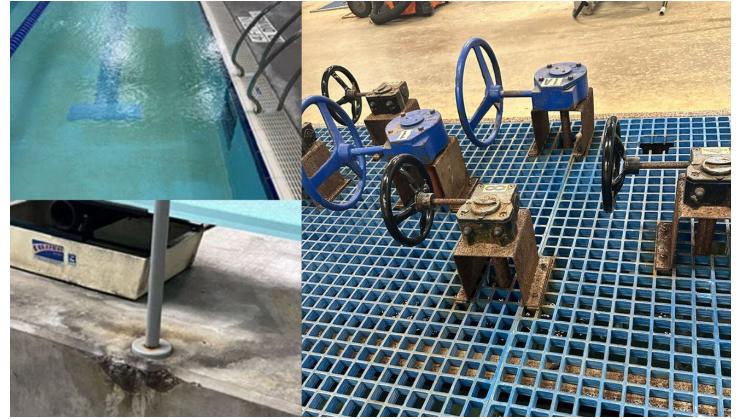
Baseball and softball programs missed approximately 40% of scheduled practices during the 2023 season due to field flooding and conditions.

Home games are sometimes moved to the opponent's or a neighboring district's field for games when unplayable.



Several systems at the LISD aquatic centers are at the end of their useful life, including the pool filtration system at the Eastside Aquatics Center. The pool must be backwashed at least once every three weeks by turning the knobs pictured, which often break because of rust.

The aging filtration and HVAC systems also cause minerals and compounds in the pools to eat away at the pool surfaces and liners, requiring surface replacements more frequently.



Tennis courts face flooding throughout the season, and have cracks, holes and tears in the surfaces.

Conditions can lead to the relocation of matches and practices, or the altering of competition schedules.



If approved, Props A, B and C will provide funding for maintenance, repairs and renovations to LISD facilities across all five high school attendance zones.

*Visit [lisdbond.com](https://lisdbond.com) for all projects included in the bond proposal.*



**#BeTheONEWhoVotes**

**EARLY VOTING: APRIL 22-30**

**ELECTION DAY: MAY 4**



Lewisville ISD maintains **37** various athletic fields, **23** tracks, more than **60** tennis courts and more than **50** locker rooms across **25** high school and middle school campuses.

More than **3,200** LISD second-graders learn water safety skills at the district's two existing aquatic centers each school year.

On an average Friday night during the fall, more than **6,000** students from a variety of groups fill our stadiums, with an average of **3,000** community members in attendance.

