



**Lewisville**  
Independent  
School  
District

# Quarterly Report 1Q20



TEMPLETON  
DEMOGRAPHICS

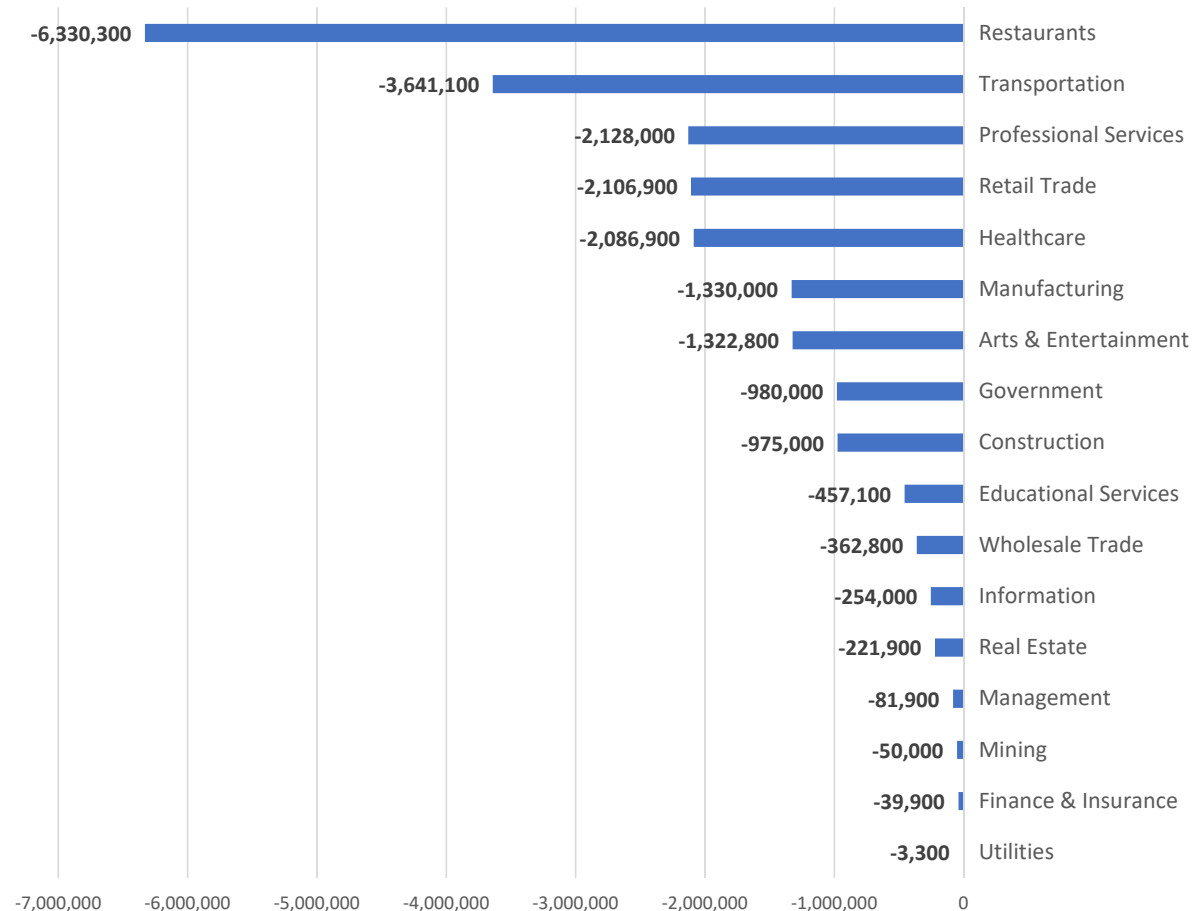
hanleywood | metrostudy



# Impacts of COVID-19 ...

- The current situation with COVID-19 is very fluid and ever-changing
- Approximately 30 million Americans filed for unemployment between mid March and late April
- National GDP decreased to -4.8% in 1Q20
- National GDP is forecasted to decrease by 28%, approximately \$2 billion in 2Q

Change in Employment by Industry, March 2020 - April 2020



Source: Bureau of Labor Statistics



# Statewide Economic Conditions

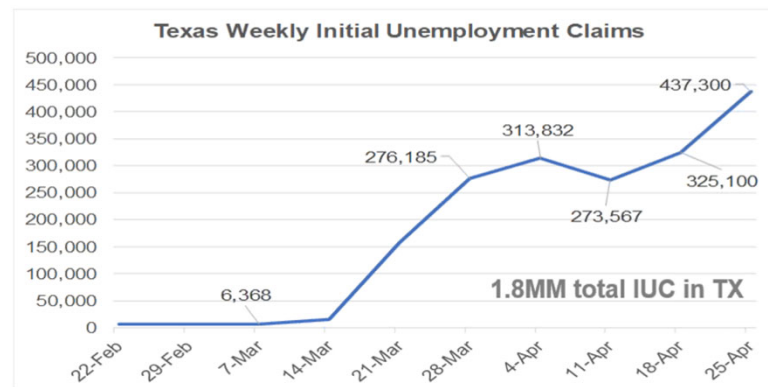
## Lower Risk Markets: Short-Term

Salt Lake City	Austin
Minneapolis	Denver
Columbus	Tampa
Portland	Raleigh
<b>Dallas</b>	Phoenix

## Higher Risk Markets: Short-Term

Las Vegas	Houston
Los Angeles/OC	Atlanta
Riverside	San Francisco
Miami	Jacksonville
Orlando	Cincinnati

## Initial Unemployment Claims



Weekly Initial Unemployment Claim by Industry (State of Texas)*		
Industry	Total	% of Total
Accommodation and Food Services	204,482	22%
Retail Trade	123,456	13%
Health Care and Social Assistance	113,868	12%
Administrative and Support	78,360	8%
N/Av	59,797	6%
Other Services	56,856	6%
Construction	47,919	5%
Manufacturing	47,085	5%
Professional, Scientific, and Tech Services	37,835	4%
Wholesale Trade	28,692	3%
Arts, Entertainment, and Recreation	26,592	3%
Transportation and Warehousing	26,440	3%
Educational Services	23,051	2%
Mining	19,877	2%
Real Estate Rental and Leasing	17,059	2%
Information	13,120	1%
Finance and Insurance	8,608	1%
Management of Companies and Enterprises	4,828	1%
Public Administration	3,014	0%
Agriculture, Forestry, Fishing and Hunting	736	0%
Utilities	507	0%
<b>Totals:</b>	<b>942,182</b>	

DFW Annual Wages

\$25k
\$37k
\$55k
\$48k
-
\$42k
\$66k
\$79k
\$97k
\$83k
\$41k
\$59k
\$52k
-
\$71k
\$98k
\$93k
\$116k
\$74k
\$39k
\$92k

\* Totals from 3/7/20 through 4/11/20

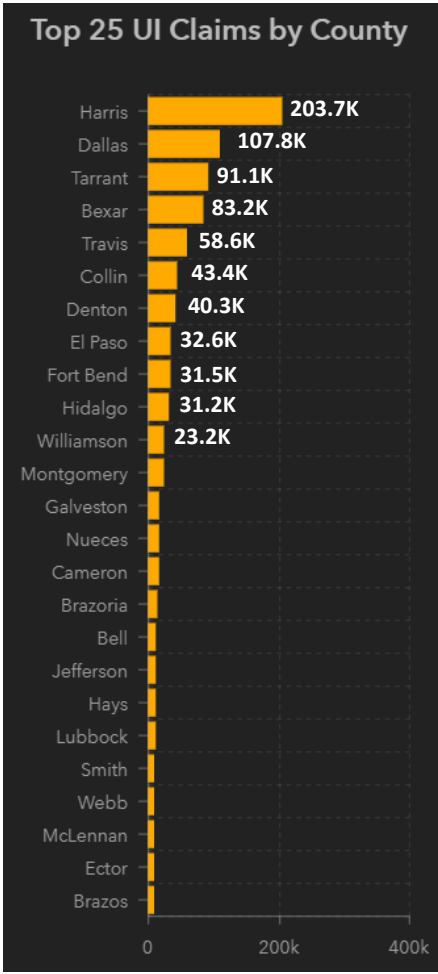
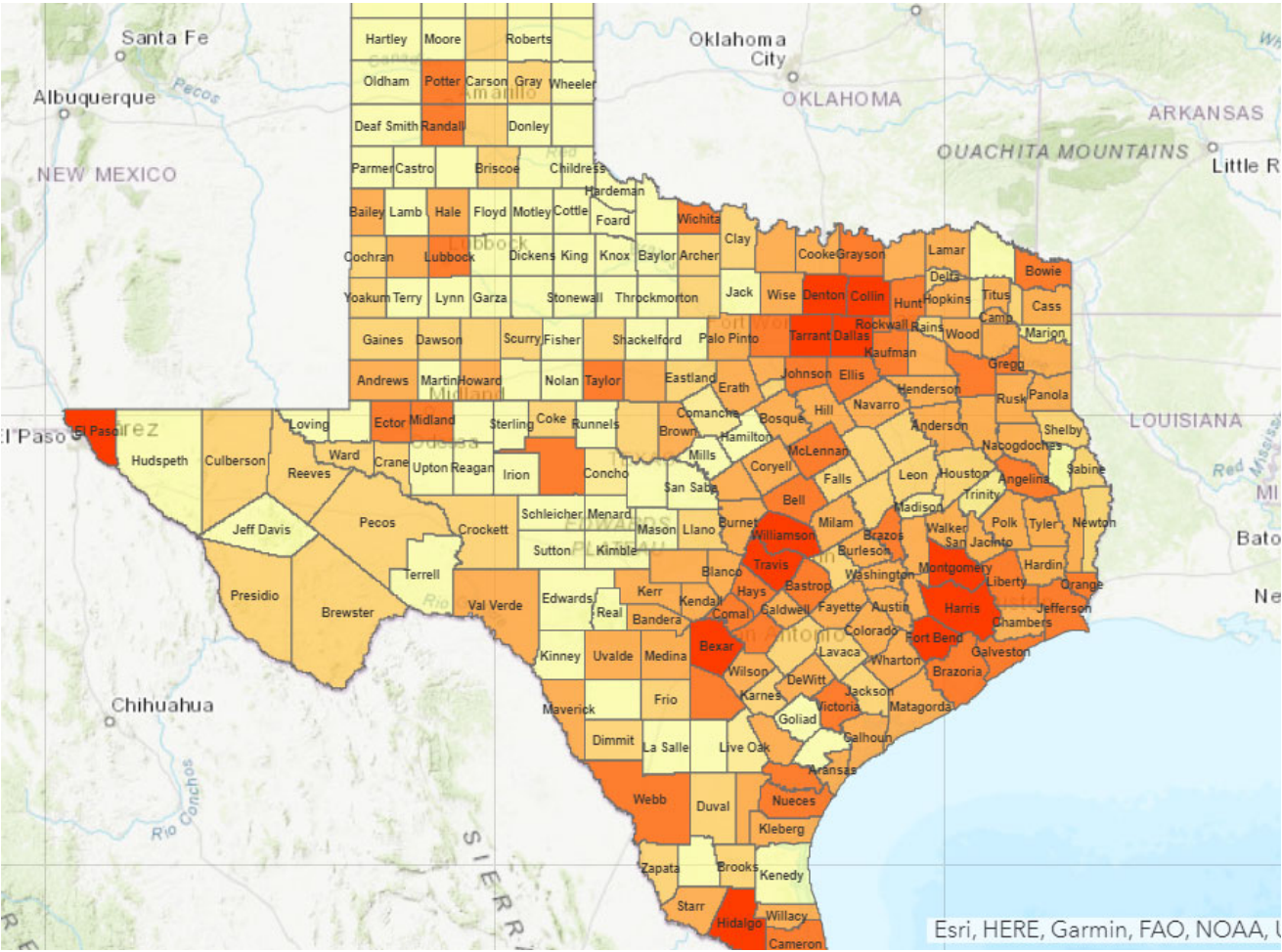
- Dallas and Austin are considered two of the markets nationwide with low risk from the COVID pandemic, however, Houston is expected to experience high risk during the pandemic due to their connection to the oil industry
- Due to COVID impact, Texas has laid off approx. 12% of its workforce; ranked 6<sup>th</sup> best state economy in the nation
- Texas has 5 of the Top 10 Most Recession-Resistant Cities in America





# Statewide Economic Conditions

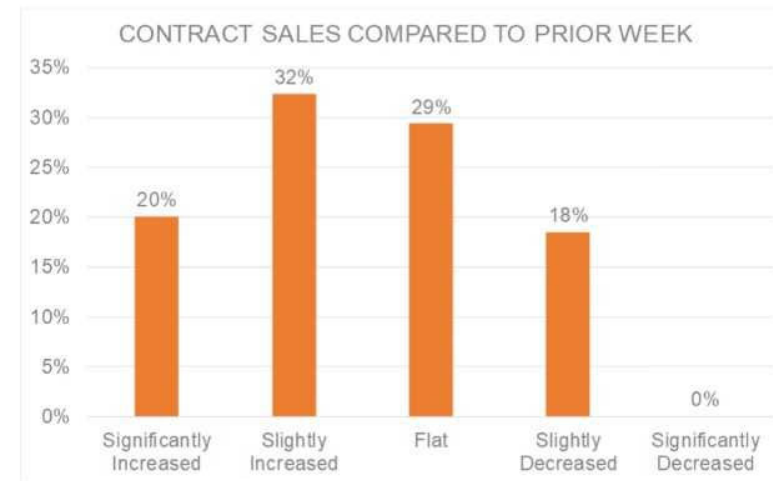
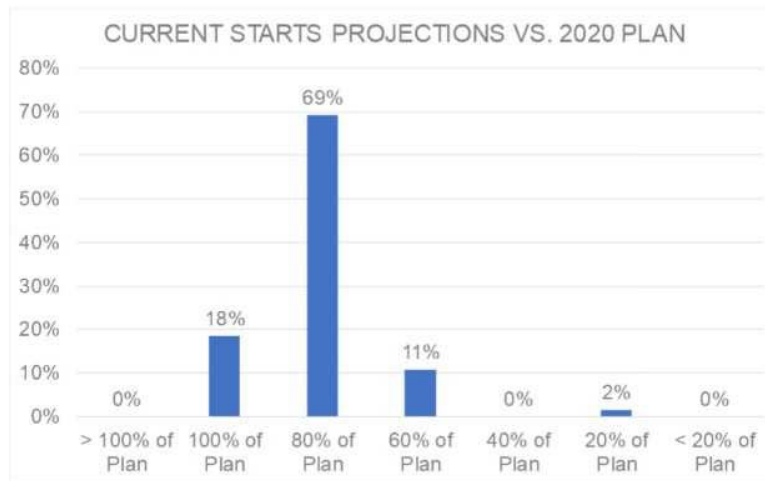
## Unemployment Claims by County 3/18/20-4/18/20





## Covid-19 and the Housing Market

### Texas Builders Survey: Starts & Contract Sales (April 27<sup>TH</sup>)



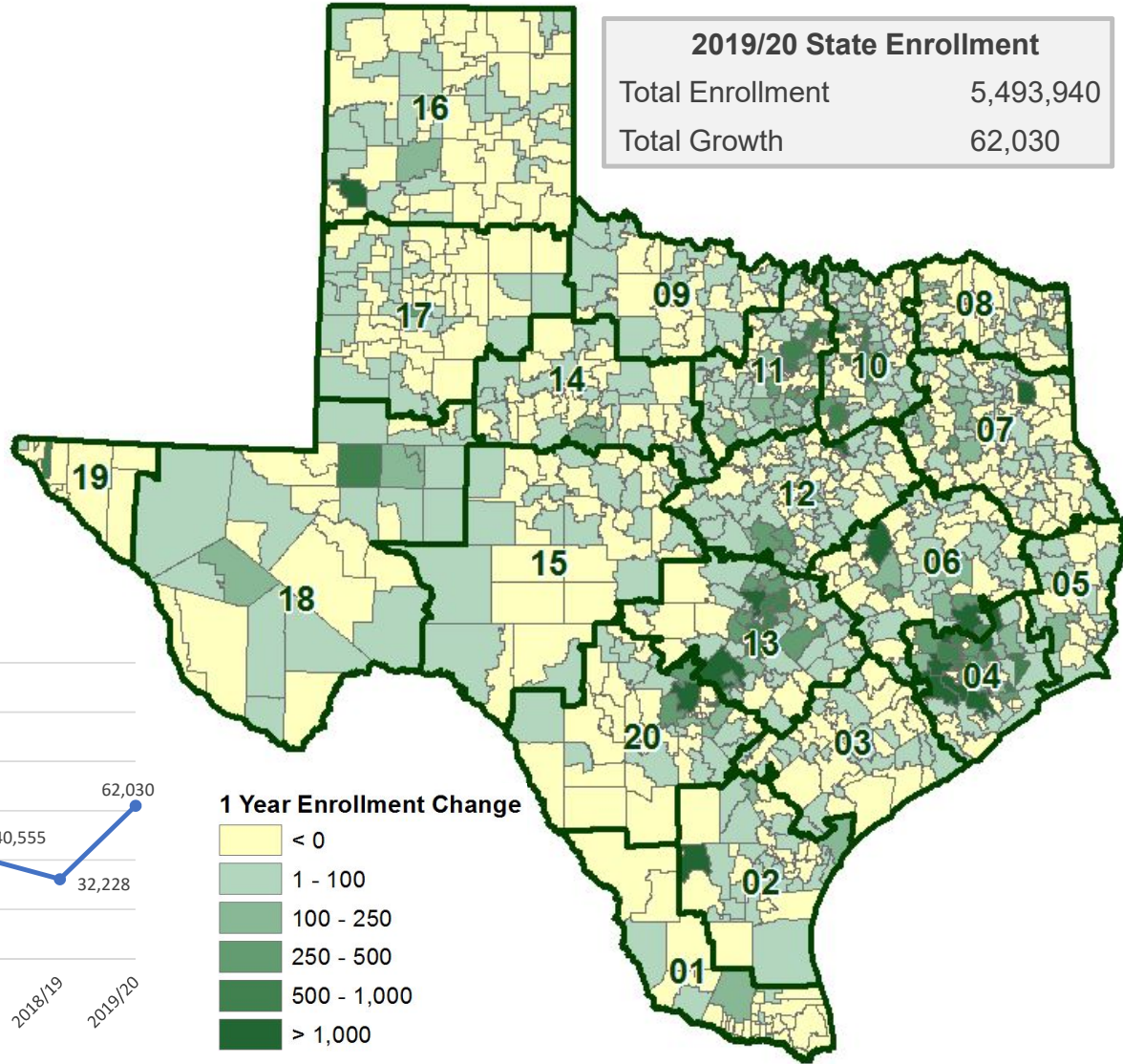
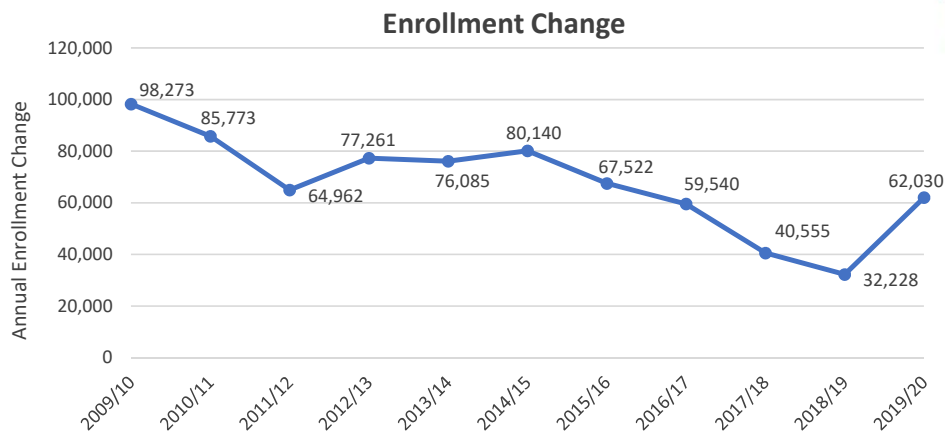
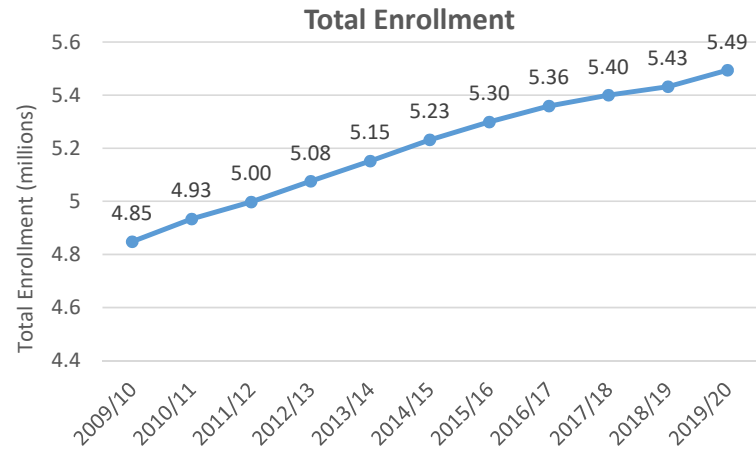
*While starts will be down in 2020, sales activity is adapting and stabilizing.*

- Home sales in Texas have improved by late April as cancellations flattened
- Online home sales traffic and virtual interaction increased during the end of April
- Existing home listings decreased 11% YOY while new home listings increased 2% YOY; this is caused by a reluctance to list and show an existing home and a decline in new home sales activity
- Most builders expect to build roughly 80% of plan in 2020
- Low new and existing home inventory coming into the decline means a slowdown will not result in an oversupplied market





# State Enrollment Trends

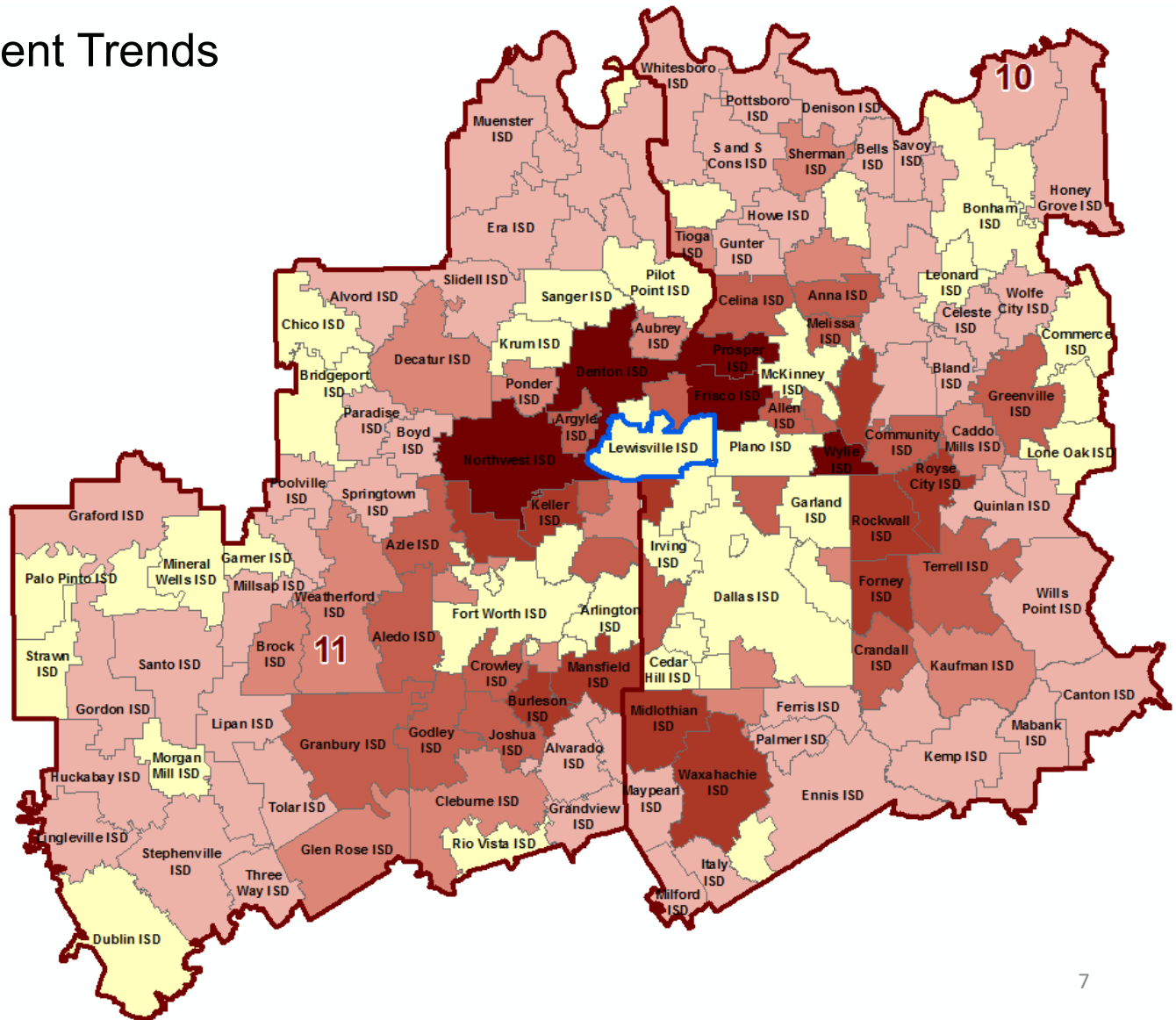
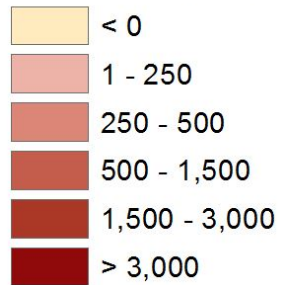




# Region 10 & 11 Enrollment Trends

Lewisville ISD enrollment has declined by 1,167 students between 2014/15 and 2019/20

### 5 Yr Enrollment Change





# DFW New Home Ranking Report

## ISD Ranked by Annual Closings – 1Q20

Rank	District Name	Annual Starts	Annual Closings	VDL	Inventory	Future
1	Prosper ISD	2,369	2,801	4,065	1,376	20,205
2	Denton ISD	2,577	2,578	4,242	1,290	20,129
3	Frisco ISD	2,177	2,299	3,107	1,597	4,814
4	Northwest ISD	2,339	2,299	3,333	1,241	22,918
5	Dallas ISD	1,751	1,793	1,980	1,979	6,035
6	Eagle Mt.-Saginaw ISD	1,812	1,776	1,814	939	18,974
<b>7</b>	<b>Lewisville ISD**</b>	<b>1,139</b>	<b>1,333</b>	<b>1,796</b>	<b>669</b>	<b>3,284*</b>
8	Forney ISD	1,502	1,295	2,800	749	28,172
9	Crowley ISD	1,350	1,201	1,040	567	16,652
10	Little Elm ISD	975	1,170	1,125	510	1,953
11	Mansfield ISD	926	985	1,300	482	7,276
12	McKinney ISD	986	972	2,110	570	8,503
13	Rockwall ISD	948	832	2,558	614	8,843
14	Royse City ISD	673	703	2,196	362	11,737
15	Wylie ISD	640	692	1,118	371	3,414
16	Plano ISD	490	689	675	322	1,286
17	Princeton ISD	714	676	1,269	284	7,801
18	Fort Worth ISD	526	672	1,317	379	5,680
19	Waxahachie ISD	895	667	882	514	20,225
20	Melissa ISD	715	658	960	381	4,985

\* Based on additional Templeton Demographics housing research

\*\*Totals **DO NOT** Include Age-Restricted communities







## District Housing Overview by Elementary Zone

Elementary	Annual Starts	Quarter Starts	Annual Closings	Quarter Closings	Under Construction	Inventory	Vacant Dev. Lots	Future
BLUEBONNET	142	30	142	21	65	86	229	434
BRIDLEWOOD	9	1	12	2	3	4	6	0
CAMEY	137	44	141	31	67	84	364	449
CASTLE HILLS	120	16	159	32	13	17	52	17
DEGAN	17	6	1	0	17	17	65	10
DONALD	1	0	0	0	1	1	1	0
ETHRIDGE	1	0	17	0	0	0	1	0
FLOWER MOUND	108	22	132	28	56	107	171	295
GARDEN RIDGE	24	5	19	3	8	22	16	0
HERITAGE	22	9	30	2	15	17	37	73
HIGHLAND VILLAGE	2	0	4	0	0	2	3	11
INDEPENDENCE	82	23	108	36	33	50	129	527
INDIAN CREEK	242	70	326	62	79	102	225	184
LAKELAND	0	0	0	0	0	0	0	52
LEWISVILLE	0	0	0	0	0	0	0	83
LIBERTY	35	2	40	13	14	20	64	144
MCAULIFFE	0	0	0	0	0	0	9	0
MILL STREET	17	7	27	3	15	17	62	91
OLD SETTLERS	1	0	0	0	1	1	2	22
OWEN	0	0	0	0	0	0	0	43
PARKWAY	28	3	24	9	8	16	0	0
PETERS COLONY	0	0	0	0	0	0	0	99
POLSER	0	0	1	0	0	0	0	0
ROCKBROOK	49	10	28	27	17	24	206	0
SOUTHRIDGE	7	0	0	0	14	18	93	27
STEWARTS CREEK	24	0	18	7	10	22	0	79
TOM HICKS	36	7	74	6	27	36	95	357
VALLEY RIDGE	34	3	30	7	4	5	3	278
WELLINGTON	1	0	0	0	1	1	1	9
<b>Grand Total</b>	<b>1,139</b>	<b>258</b>	<b>1,333</b>	<b>289</b>	<b>468</b>	<b>669</b>	<b>1,834</b>	<b>3,284</b>

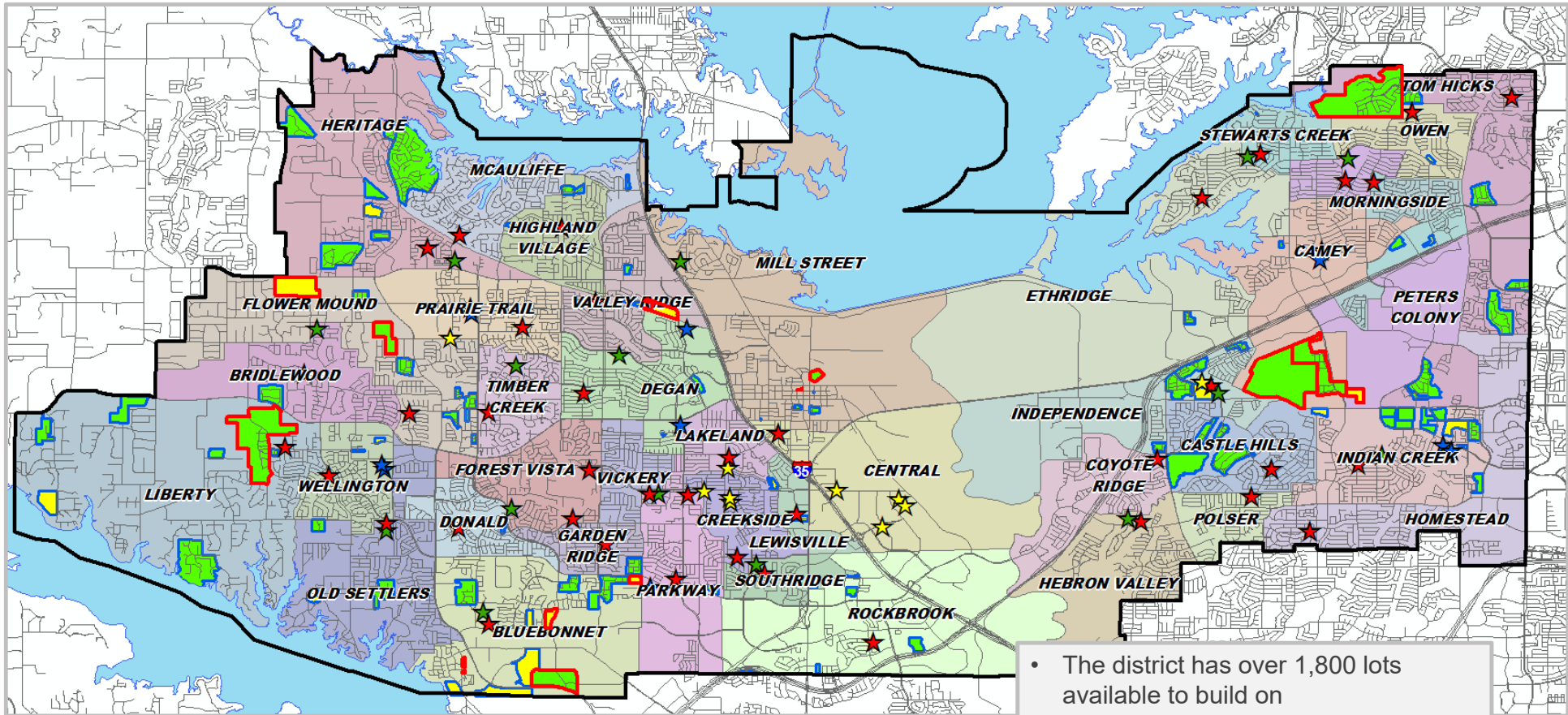
- Highest activity in the category
- Second highest activity in the category
- Third highest activity in the category

\*Does NOT include Age-Restricted communities





# District Housing Overview



- The district has over 1,800 lots available to build on
- Within LISD there are nearly 3,300 planned future lots
- Of these, groundwork is underway on over 1,200 lots within the district

## Subdivisions

- ACTIVE
- FUTURE
- Groundwork Underway







# Residential Activity



**Kensington Place**

- 99 total future lots
- Zoning approved Feb 2020
- Plans in design phase
- Darling Homes







# Residential Activity



**Parker Place**

- 131 total future lots
- Zoning approved April 2020
- Land owned by LISD being sold to developer







# Residential Activity

**Smith Tract**

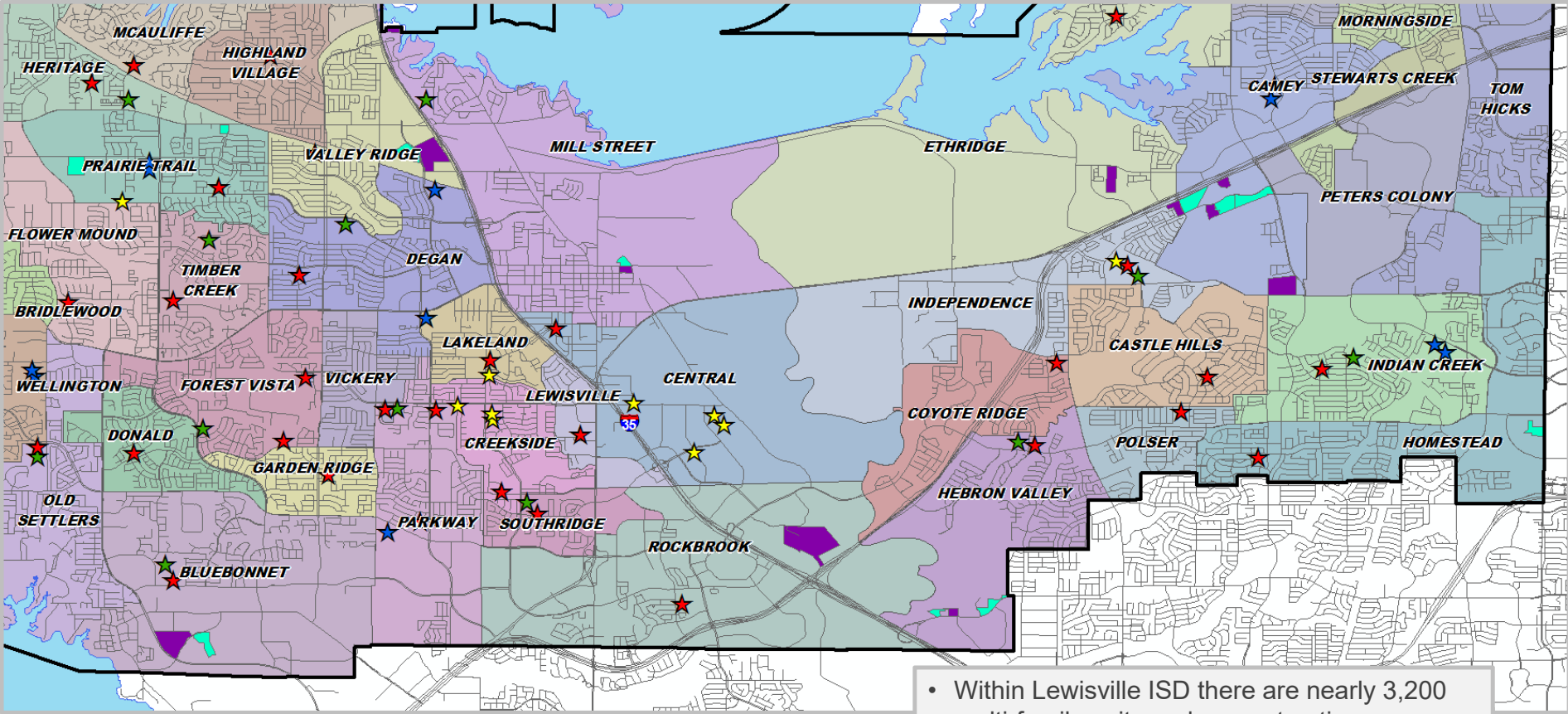
- 30 total future lots
- Zoning and development plan approved April 2020
- Toll Brothers Homes







# Multi-Family Housing Overview



**Multi-Family Developments**

- Future Development
- Under Construction

- Within Lewisville ISD there are nearly 3,200 multi-family units under construction
- There are nearly 7,500 future units in planning stages across the district





# TEA Transfer Report

Transfers In From	2014/15	2015/16	2016/17	2017/18	2018/19	2019/20	5-Year Change
Carrollton-Farmers Branch ISD	45	42	45	64	67	93	48
Denton ISD	105	117	133	139	195	252	147
Frisco ISD	30	29	34	47	71	87	57
Lake Dallas ISD	42	44	49	64	65	101	59
Little Elm ISD	25	32	27	20	29	54	29
Northwest ISD	8	5	12	15	18	24	16
<b>Total Transfers In*</b>	<b>310</b>	<b>327</b>	<b>357</b>	<b>419</b>	<b>550</b>	<b>748</b>	<b>438</b>

Transfers Out To	2014/15	2015/16	2016/17	2017/18	2018/19	2019/20	5-Year Change
Argyle ISD	15	26	15	21	25	15	0
Brazos River Charter School	11	18	27	22	3	14	3
Carrollton-Farmers Branch ISD	89	84	91	86	202	249	160
Coppell ISD	146	146	141	165	173	168	22
Denton ISD	7	8	11	19	15	4	-3
Frisco ISD	45	57	50	52	60	56	11
Grapevine-Colleyville ISD	9	17	41	58	49	55	46
Great Hearts Texas	0	22	23	23	22	28	28
Harmony Science Academy	291	360	395	367	328	312	21
International Leadership of Texas	0	0	5	10	3	4	4
Lake Dallas ISD	20	23	23	27	30	29	9
Leadership Prep School	23	32	49	59	62	62	39
Little Elm ISD	5	6	6	14	11	4	-1
Manara Academy	26	23	25	20	11	4	-22
N. TX Collegiate Academy	156	127	111	163	200	253	97
Plano ISD	18	27	25	22	23	20	2
Premier High Schools	41	77	80	71	43	28	-13
Texas College Preparatory Academy	1,032	1,342	1,503	1,561	1,645	1,747	715
Trivium Academy	0	0	205	325	350	344	344
Universal Academy	216	251	255	252	217	223	7
Uplift Education	127	121	115	110	113	105	-22
Winfrey Academy Charter Schools	66	76	74	63	83	74	8
<b>Total Transfers Out*</b>	<b>2,417</b>	<b>2,914</b>	<b>3,346</b>	<b>3,598</b>	<b>3,817</b>	<b>4,004</b>	<b>1,587</b>

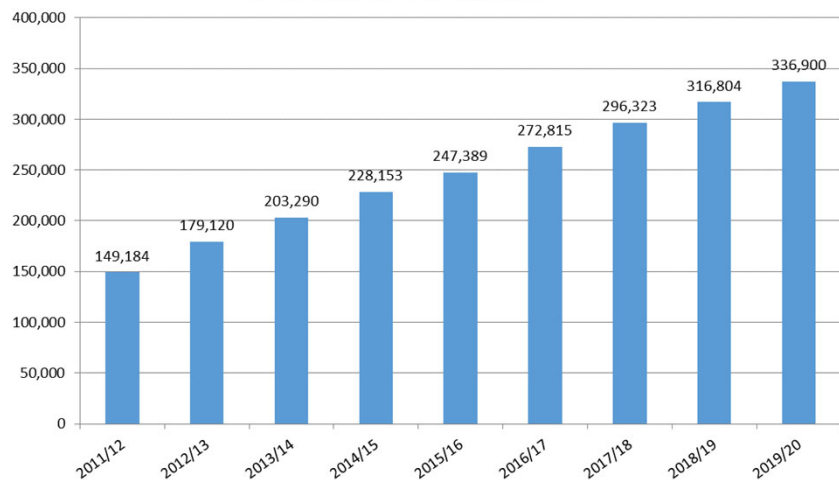
\* Totals include additional districts per TEA rounding rules



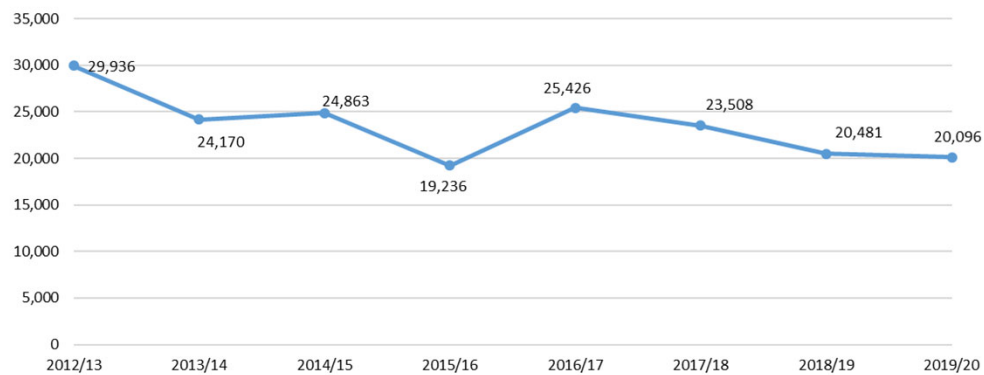


# Charter Schools in Texas

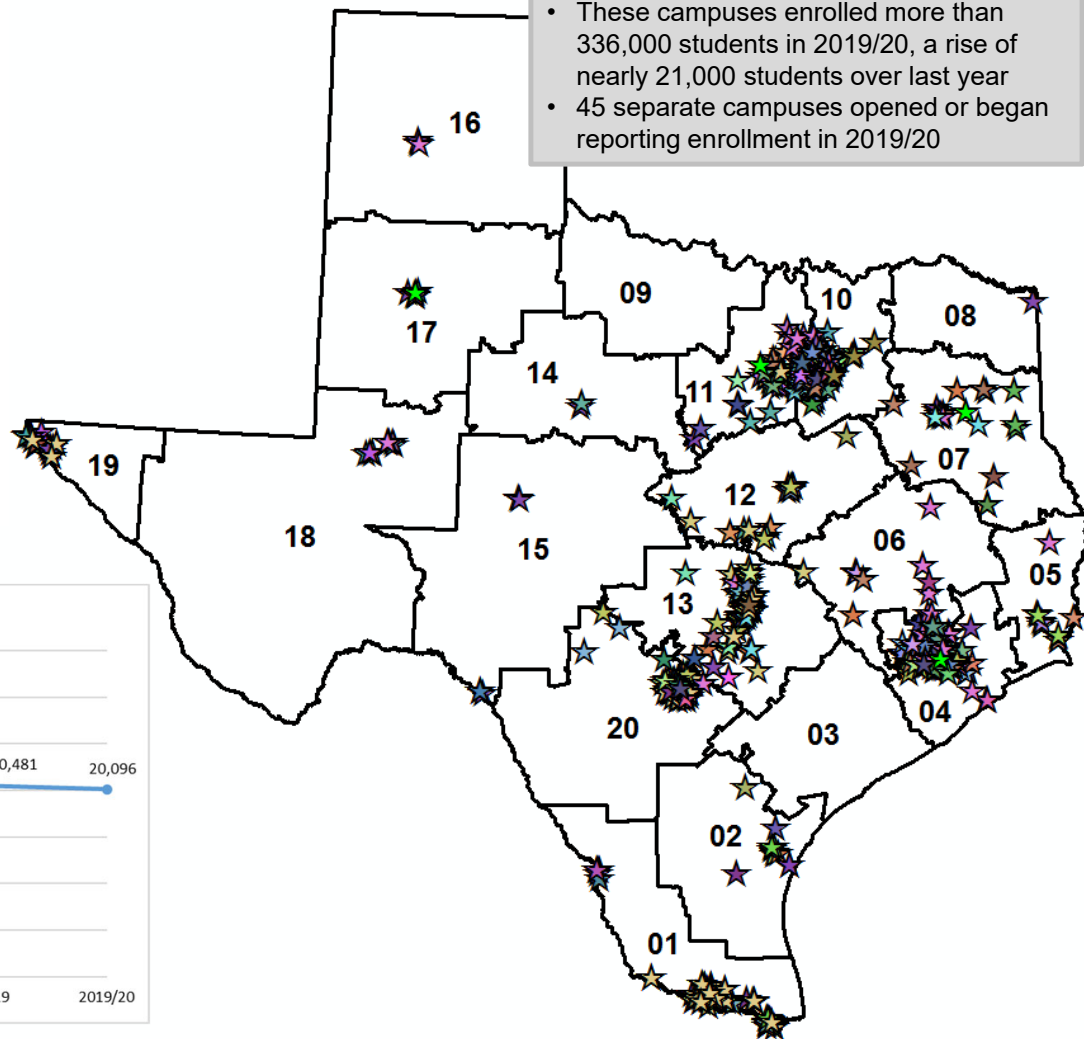
### Total Charter Enrollment



### Charter Enrollment Change



- There are currently more than 780 charter school campuses open across Texas
- These campuses enrolled more than 336,000 students in 2019/20, a rise of nearly 21,000 students over last year
- 45 separate campuses opened or began reporting enrollment in 2019/20

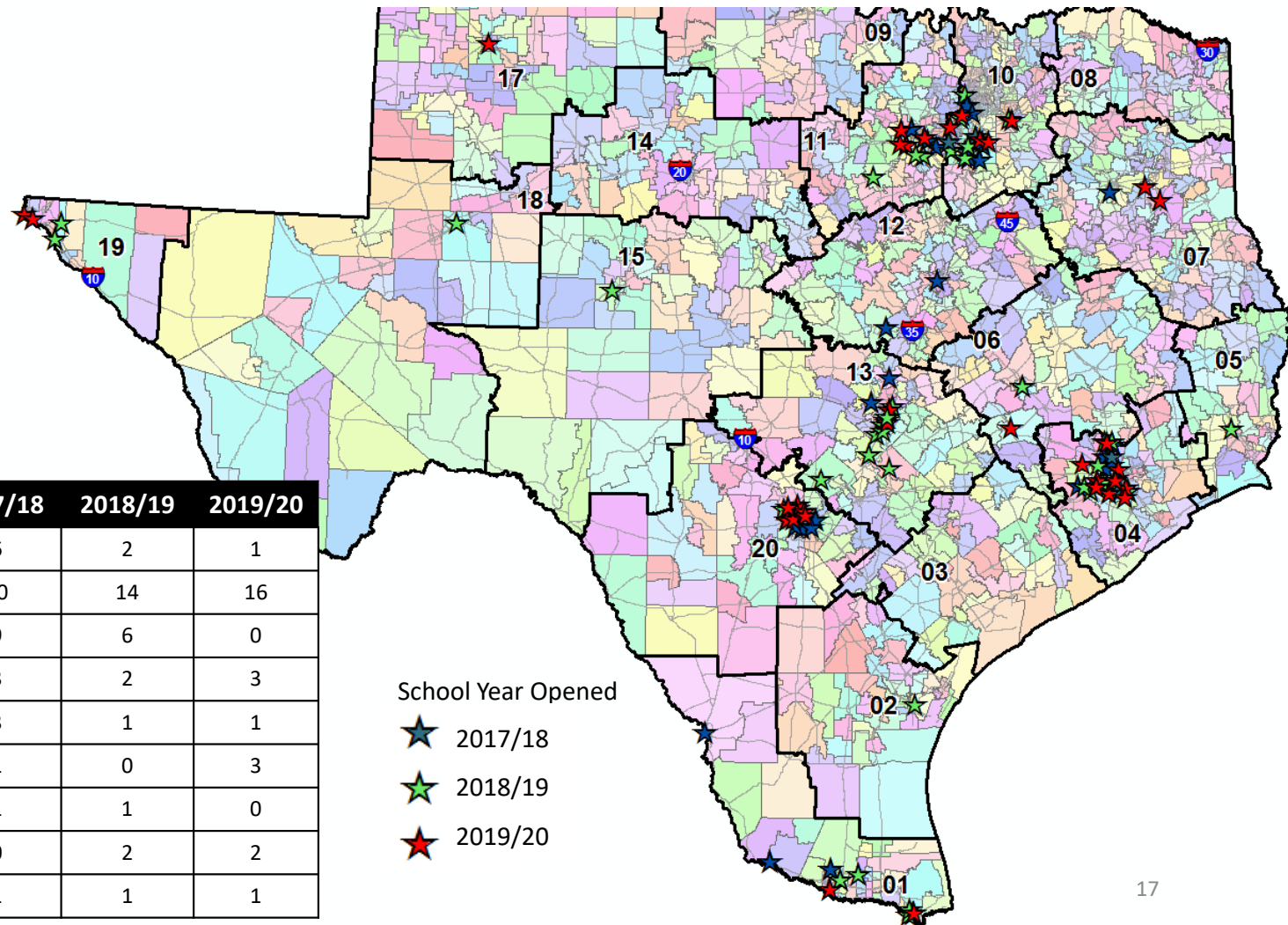




# New Campus Growth

New Campuses by Charter Organization & Region, 2017/18 – 2019/20

Region	2017/18	2018/19	2019/20
Region 1	7	6	4
Region 4	10	11	10
Region 10	10	6	5
Region 11	5	3	6
Region 13	3	11	4
Region 19	0	4	3
Region 20	9	4	9
<b>Total</b>	<b>44</b>	<b>45</b>	<b>41</b>



Charter Organization	2017/18	2018/19	2019/20
Harmony	6	2	1
IDEA	10	14	16
International Leadership of Texas	9	6	0
KIPP	3	2	3
Uplift	3	1	1
Jubilee	1	0	3
Premier High School	1	1	0
Texas College Prep Academies	0	2	2
YES Prep	1	1	1

School Year Opened

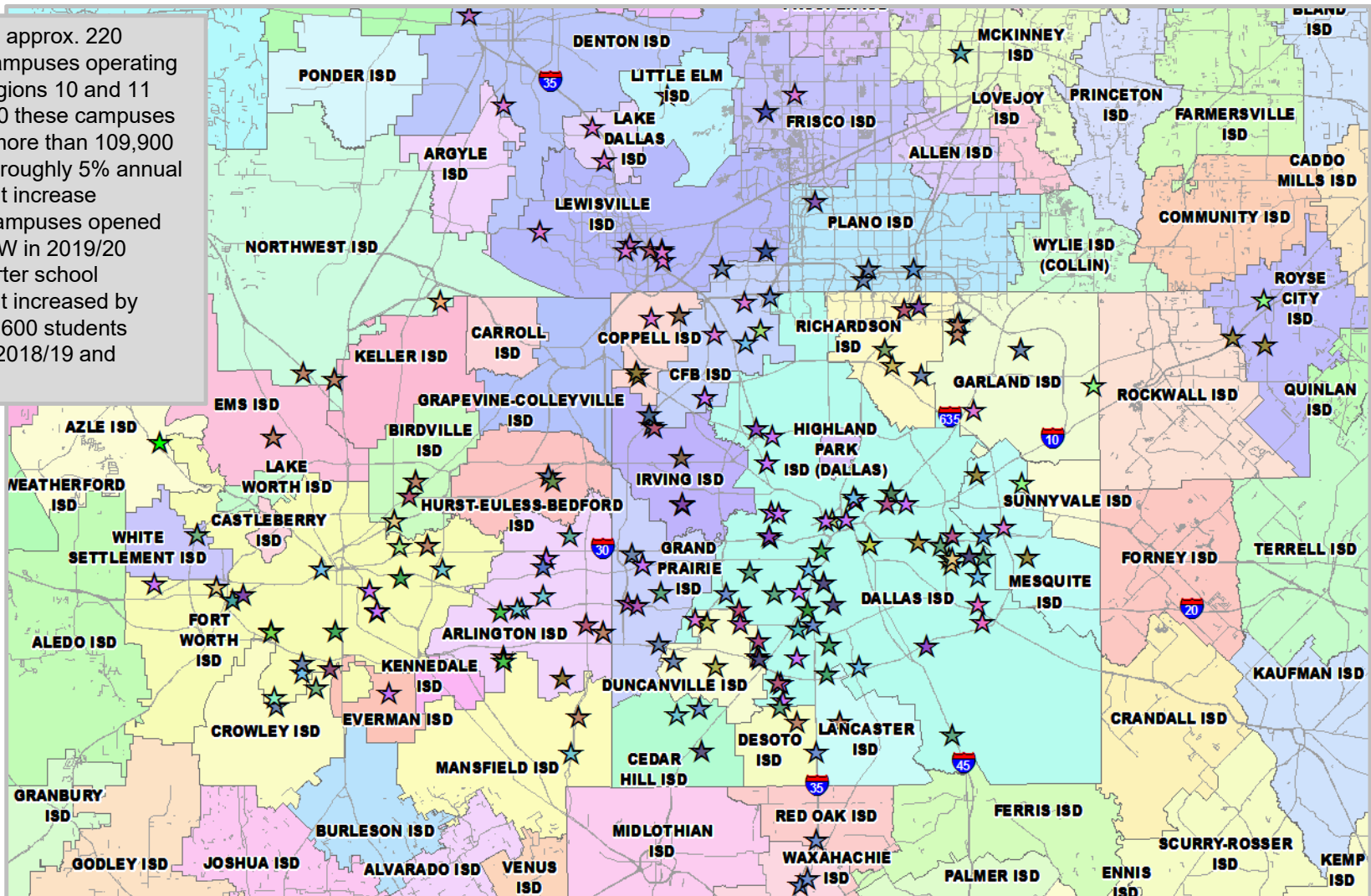
- ★ 2017/18
- ★ 2018/19
- ★ 2019/20





# Charter Campuses in DFW

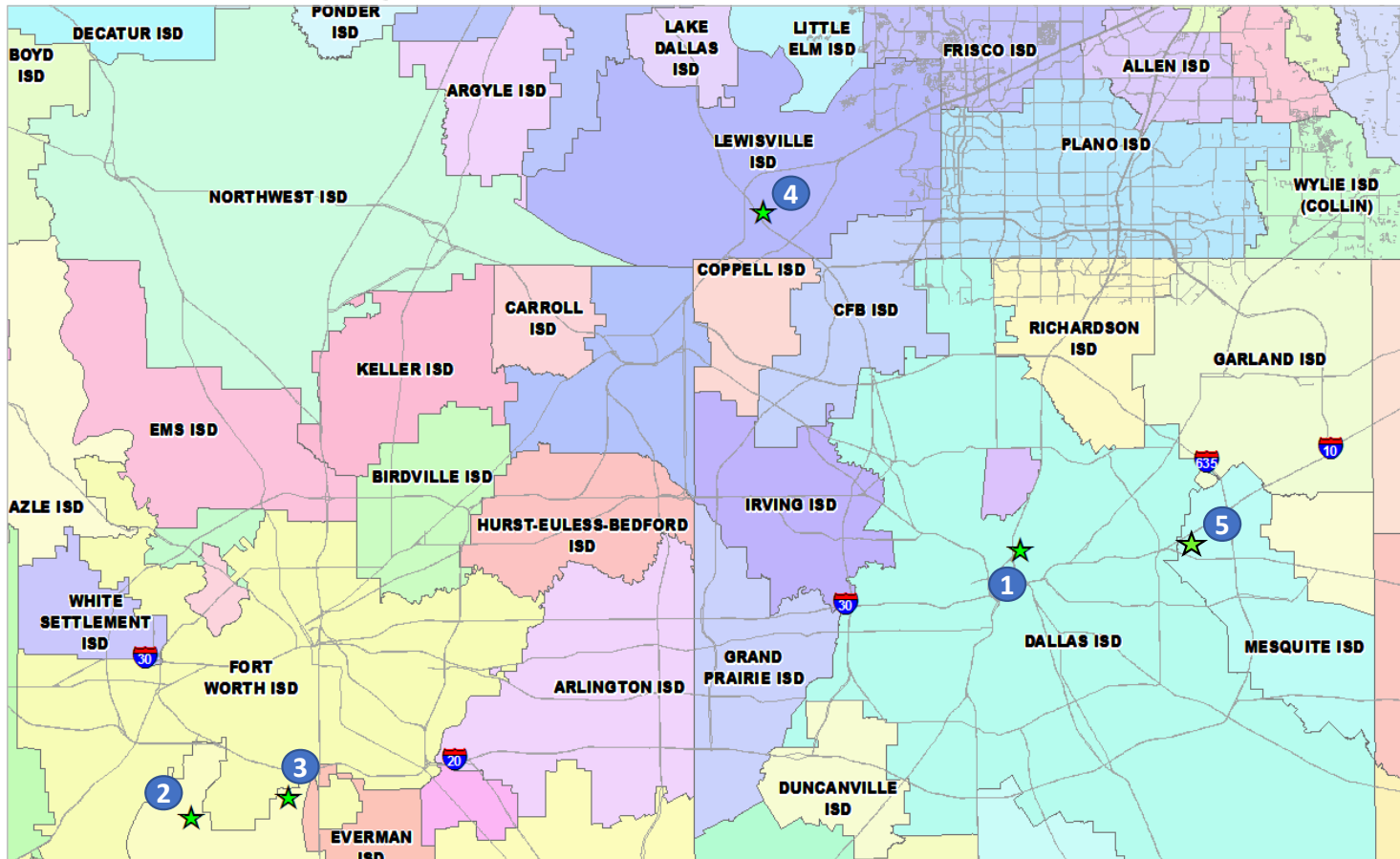
- There are approx. 220 charter campuses operating within Regions 10 and 11
- In 2019/20 these campuses enrolled more than 109,900 students, roughly 5% annual enrollment increase
- 11 new campuses opened within DFW in 2019/20
- Total charter school enrollment increased by roughly 5,600 students between 2018/19 and 2019/20







# New Campuses Opening in DFW in 2020/21



#	Charter School	Location	Grades	Notes
1	Universal Academy- Dallas	3919 Munger Ave, Dallas	PK – 7 <sup>th</sup>	Max capacity 1,300 students
2	Great Hearts Lakeside	7633 Harris Pkwy, Fort Worth	KG – 5 <sup>th</sup>	Initial enrollment 600 students; expanding to KG – 12 <sup>th</sup> with max capacity of 1,400 students
3	IDEA Edgecliff	6800 Crowley Rd, Fort Worth	KG – 1 <sup>st</sup> ; 5 <sup>th</sup> – 6 <sup>th</sup>	Initial enrollment 450 students
4	<b>Lakeway Elementary</b>	<b>1800 Lakeway Dr, Lewisville</b>	<b>KG – 5<sup>th</sup></b>	<b>Located in the current high school building; initial enrollment 350 students</b>
5	Trinity Basin Prep- Mesquite	2901 E Meadows Blvd, Mesquite	PK – 3 <sup>rd</sup> ; 6 <sup>th</sup>	Initial enrollment of 350 students; expanding to PK – 8 <sup>th</sup> with max capacity of 1,000 students





# Ten Year Forecast by Grade Level

Year (OCT)	EE	PK	K	1st	2nd	3rd	4th	5th	6th	7th	8th	9th	10th	11th	12th	Totals	Total Growth	% Growth
2015/16	175	1,635	3,358	3,570	3,612	3,834	3,890	4,059	4,049	4,115	4,210	4,465	4,364	4,159	3,995	53,490		
2016/17	158	1,646	3,374	3,441	3,671	3,589	3,812	3,941	4,055	4,127	4,181	4,486	4,391	4,296	4,089	53,257	-233	-0.4%
2017/18	115	1,622	3,292	3,396	3,458	3,694	3,623	3,823	3,906	4,064	4,168	4,373	4,341	4,303	4,179	52,357	-900	-1.7%
2018/19	270	1,650	3,312	3,405	3,406	3,526	3,756	3,746	3,892	3,957	4,147	4,369	4,315	4,223	4,257	52,231	-126	-0.2%
2019/20	623	1,648	3,460	3,342	3,415	3,414	3,496	3,732	3,874	3,935	3,983	4,455	4,310	4,250	4,123	52,060	-171	-0.3%
COVID 2020/21	621	1,642	3,373	3,514	3,359	3,436	3,442	3,533	3,811	3,900	3,968	4,210	4,388	4,234	4,140	51,572	-488	-0.9%
2020/21	623	1,648	3,384	3,525	3,370	3,447	3,453	3,544	3,823	3,912	3,980	4,222	4,402	4,248	4,154	51,735	-326	-0.6%
2021/22	623	1,648	3,405	3,480	3,550	3,395	3,468	3,511	3,593	3,879	3,968	4,220	4,162	4,339	4,160	51,400	-334	-0.6%
2022/23	623	1,648	3,320	3,469	3,499	3,571	3,428	3,528	3,595	3,644	3,917	4,200	4,166	4,105	4,245	50,959	-441	-0.9%
2023/24	623	1,648	3,361	3,401	3,495	3,524	3,609	3,476	3,614	3,644	3,688	4,155	4,145	4,112	4,017	50,513	-446	-0.9%
2024/25	623	1,648	3,333	3,445	3,427	3,505	3,552	3,664	3,545	3,676	3,686	3,910	4,102	4,089	4,024	50,229	-283	-0.6%
2025/26	623	1,648	3,341	3,411	3,465	3,441	3,532	3,601	3,743	3,608	3,736	3,907	3,866	4,046	4,003	49,971	-258	-0.5%
2026/27	623	1,648	3,349	3,423	3,440	3,483	3,462	3,582	3,686	3,808	3,651	3,965	3,861	3,816	3,961	49,758	-213	-0.4%
2027/28	623	1,648	3,335	3,432	3,457	3,452	3,511	3,503	3,661	3,742	3,855	3,874	3,913	3,814	3,737	49,557	-201	-0.4%
2028/29	623	1,648	3,363	3,415	3,469	3,472	3,476	3,561	3,582	3,722	3,793	4,085	3,827	3,864	3,734	49,634	77	0.2%
2029/30	623	1,648	3,373	3,442	3,447	3,483	3,495	3,521	3,642	3,643	3,770	4,022	4,035	3,778	3,780	49,702	68	0.1%

Yellow box = largest grade per year  
 Green box = second largest grade per year





# One Year COVID-19 Impact Projections by Elementary Campus

CAMPUS	Fall	2020/21 Enrollment Projections by Grade															Original Projection		
	2019/20	EE	PK	KG	1st	2nd	3rd	4th	5th	6th	7th	8th	9th	10th	11th	12th	Total	Change	2020/21
BB OWEN ELEMENTARY	341	28	34	46	41	42	52	44	51	0	0	0	0	0	0	0	337	-4	338
BLUEBONNET ELEMENTARY	518	5	0	86	86	71	79	97	92	0	0	0	0	0	0	0	516	-2	522
BRIDLEWOOD ELEMENTARY	394	0	0	64	66	55	79	64	59	0	0	0	0	0	0	0	386	-8	387
CAMEY ELEMENTARY	609	12	77	91	83	96	93	83	79	0	0	0	0	0	0	0	614	5	624
CASTLE HILLS ELEMENTARY	742	0	0	137	138	140	124	115	113	0	0	0	0	0	0	0	767	25	779
CENTRAL ELEMENTARY	652	29	74	88	91	84	87	75	95	0	0	0	0	0	0	0	626	-26	630
MILL ST. ELEMENTARY	584	0	69	83	90	93	84	80	96	0	0	0	0	0	0	0	594	10	595
COYOTE RIDGE ELEMENTARY	636	23	63	90	100	88	83	72	110	0	0	0	0	0	0	0	629	-7	629
CREEKSIDE ELEMENTARY	480	12	0	82	101	73	86	62	59	0	0	0	0	0	0	0	475	-5	475
DEGAN ELEMENTARY	648	41	65	76	78	98	86	88	97	0	0	0	0	0	0	0	629	-19	629
DONALD ELEMENTARY	612	22	0	88	99	100	109	101	98	0	0	0	0	0	0	0	617	5	617
ETHRIDGE ELEMENTARY	430	14	0	68	75	58	60	68	74	0	0	0	0	0	0	0	417	-13	417
FLOWER MOUND ELEMENTARY	487	28	0	80	87	80	81	69	65	0	0	0	0	0	0	0	488	1	496
FOREST VISTA ELEMENTARY	498	25	26	72	82	65	77	78	81	0	0	0	0	0	0	0	506	8	506
GARDEN RIDGE ELEMENTARY	425	28	0	48	55	65	70	70	80	0	0	0	0	0	0	0	414	-11	416
HEBRON VALLEY ELEMENTARY	506	16	35	70	57	65	80	78	80	0	0	0	0	0	0	0	481	-25	481
HERITAGE ELEMENTARY	556	0	22	69	76	89	76	84	102	0	0	0	0	0	0	0	516	-40	518
HIGHLAND VILLAGE ELEMENTARY	369	11	0	61	66	54	61	54	62	0	0	0	0	0	0	0	369	0	369
HOMESTEAD ELEMENTARY	555	13	0	83	95	78	83	88	98	0	0	0	0	0	0	0	538	-17	538
INDEPENDENCE ELEMENTARY	908	18	69	103	109	141	134	149	135	0	0	0	0	0	0	0	858	-50	864





# One Year COVID-19 Impact Projections by Elementary Campus

CAMPUS	Fall	2020/21 Enrollment Projections by Grade																	Original Projection
	2019/20	EE	PK	KG	1st	2nd	3rd	4th	5th	6th	7th	8th	9th	10th	11th	12th	Total	Change	2020/21
INDIAN CREEK ELEMENTARY	571	9	48	88	87	88	75	86	99	0	0	0	0	0	0	0	579	8	587
LAKELAND ELEMENTARY	837	14	0	130	135	139	130	128	125	0	0	0	0	0	0	0	801	-36	801
LEWISVILLE ELEMENTARY	618	14	0	106	107	79	97	105	105	0	0	0	0	0	0	0	613	-5	613
LIBERTY ELEMENTARY	513	0	43	65	65	65	74	85	101	0	0	0	0	0	0	0	496	-17	499
LILLIE JACKSON EARLY EDUCATION CENTER	667	21	644	0	0	0	0	0	0	0	0	0	0	0	0	0	665	-2	667
MARJORY VICKERY ELEMENTARY	758	0	0	125	124	121	118	133	111	0	0	0	0	0	0	0	732	-26	732
MCAULIFFE ELEMENTARY	600	18	15	92	102	92	94	97	98	0	0	0	0	0	0	0	608	8	608
MORNINGSIDE ELEMENTARY	389	21	0	63	60	56	66	58	59	0	0	0	0	0	0	0	383	-6	383
OLD SETTLERS ELEMENTARY	574	24	0	78	88	90	89	109	95	0	0	0	0	0	0	0	573	-1	573
PARKWAY ELEMENTARY	582	16	0	92	96	108	85	106	87	0	0	0	0	0	0	0	589	7	590
PETERS COLONY ELEMENTARY	581	0	57	88	86	83	66	77	89	0	0	0	0	0	0	0	546	-35	546
POLSER ELEMENTARY	496	31	82	78	83	74	67	62	51	0	0	0	0	0	0	0	528	32	528
PRAIRIE TRAIL ELEMENTARY	694	16	0	105	108	106	107	118	123	0	0	0	0	0	0	0	683	-11	683
ROCKBROOK ELEMENTARY	728	30	66	112	106	113	116	102	97	0	0	0	0	0	0	0	741	13	742
SOUTHRIDGE ELEMENTARY	649	25	0	103	101	91	116	97	108	0	0	0	0	0	0	0	641	-8	641
STEWARTS CREEK ELEMENTARY	301	13	50	44	43	33	41	42	36	0	0	0	0	0	0	0	301	0	302
TIMBER CREEK ELEMENTARY	510	12	62	70	77	74	59	85	77	0	0	0	0	0	0	0	516	6	516
TOM HICKS ELEMENTARY	653	12	0	125	136	108	104	99	103	0	0	0	0	0	0	0	685	32	688
VALLEY RIDGE ELEMENTARY	588	12	22	104	106	78	101	104	85	0	0	0	0	0	0	0	611	23	612
WELLINGTON ELEMENTARY	855	10	20	122	130	126	147	130	152	0	0	0	0	0	0	0	837	-18	837
<b>ELEMENTARY SCHOOL TOTALS</b>	<b>23,114</b>	<b>621</b>	<b>1,642</b>	<b>3,373</b>	<b>3,513</b>	<b>3,357</b>	<b>3,434</b>	<b>3,439</b>	<b>3,525</b>	<b>0</b>	<b>0</b>	<b>0</b>	<b>0</b>	<b>0</b>	<b>0</b>	<b>0</b>	<b>22,905</b>	<b>-209</b>	<b>22,978</b>





# One Year Covid-19 Impact Projections by Secondary Campus

CAMPUS	Fall	2020/21 Enrollment Projections by Grade																	Original Projection 2020/21	
	2019/20	EE	PK	KG	1st	2nd	3rd	4th	5th	6th	8th	8th	9th	10th	11th	12th	Total	Change		
ARBOR CREEK MIDDLE SCHOOL	837	0	0	0	0	0	0	0	0	290	292	298	0	0	0	0	881	44	886	
BRIARHILL MIDDLE SCHOOL	861	0	0	0	0	0	0	0	0	293	275	279	0	0	0	0	846	-22	847	
CLAYTON DOWNING MIDDLE SCHOOL	477	0	0	0	0	0	0	0	0	131	156	168	0	0	0	0	455	-22	458	
CREEK VALLEY MIDDLE SCHOOL	717	0	0	0	0	0	0	0	0	196	240	265	0	0	0	0	701	-16	701	
DELAY MIDDLE SCHOOL	1,039	0	0	0	0	0	0	0	0	349	346	336	0	0	0	0	1,032	-7	1,034	
FORESTWOOD MIDDLE SCHOOL	911	0	0	0	0	0	0	0	0	273	299	307	0	0	0	0	878	-33	879	
GRIFFIN MIDDLE SCHOOL	746	0	0	0	0	0	0	0	0	224	222	261	0	0	0	0	707	-39	707	
HEDRICK MIDDLE SCHOOL	636	0	0	0	0	0	0	0	0	221	212	217	0	0	0	0	649	13	650	
HUFFINES MIDDLE SCHOOL	815	0	0	0	0	0	0	0	0	274	260	294	0	0	0	0	827	12	828	
KILLIAN MIDDLE SCHOOL	995	0	0	0	0	0	0	0	0	377	355	339	0	0	0	0	1,071	76	1,080	
LAKEVIEW MIDDLE SCHOOL	637	0	0	0	0	0	0	0	0	194	189	228	0	0	0	0	610	-27	615	
LAMAR MIDDLE SCHOOL	735	0	0	0	0	0	0	0	0	245	263	229	0	0	0	0	737	-12	738	
MARSHALL DURHAM MIDDLE SCHOOL	810	0	0	0	0	0	0	0	0	267	280	251	0	0	0	0	798	-12	798	
MCKAMY MIDDLE SCHOOL	866	0	0	0	0	0	0	0	0	289	290	270	0	0	0	0	850	-16	852	
SHADOW RIDGE MIDDLE SCHOOL	671	0	0	0	0	0	0	0	0	182	204	213	0	0	0	0	599	-72	603	
<b>MIDDLE SCHOOL TOTALS</b>	<b>11,753</b>	<b>0</b>	<b>0</b>	<b>0</b>	<b>0</b>	<b>0</b>	<b>0</b>	<b>0</b>	<b>0</b>	<b>3,803</b>	<b>3,882</b>	<b>3,955</b>	<b>0</b>	<b>0</b>	<b>0</b>	<b>0</b>	<b>11,640</b>	<b>-113</b>	<b>11,676</b>	
FLOWER MOUND 9TH GRADE CAMPUS	900	0	0	0	0	0	0	0	0	0	0	0	898	0	0	0	898	-2	901	
HEBRON 9th GRADE CAMPUS	947	0	0	0	0	0	0	0	0	0	0	0	804	0	0	0	804	-143	808	
MARCUS 9th GRADE CAMPUS	752	0	0	0	0	0	0	0	0	0	0	0	740	0	0	0	740	-12	742	
FLOWER MOUND HIGH SCHOOL	2,752	0	0	0	0	0	0	0	0	0	0	0	1	905	966	889	2,761	9	2,770	
HEBRON HIGH SCHOOL	2,811	0	0	0	0	0	0	0	0	0	0	0	23	992	911	905	2,830	19	2,846	
LEWISVILLE HIGH SCHOOL	2,149	0	0	0	0	0	0	0	0	0	0	0	1	3	1,084	1,054	2,142	12	2,144	
LEWISVILLE BEN HARMON HS	1,285	0	0	0	0	0	0	0	0	0	0	0	665	631	0	0	1,297	12	1,298	
LEWISVILLE KILLOUGH	1,035	0	0	0	0	0	0	0	0	0	0	0	519	525	0	0	1,045	10	1,046	
MARCUS HIGH SCHOOL	2,342	0	0	0	0	0	0	0	0	0	0	0	21	761	717	786	2,284	0	2,291	
THE COLONY HIGH SCHOOL	2,022	0	0	0	0	0	0	0	0	0	0	0	524	540	512	459	2,035	0	2,043	
<b>HIGH SCHOOL TOTALS</b>	<b>16,995</b>	<b>0</b>	<b>0</b>	<b>0</b>	<b>0</b>	<b>0</b>	<b>0</b>	<b>0</b>	<b>0</b>	<b>0</b>	<b>0</b>	<b>0</b>	<b>4,196</b>	<b>4,357</b>	<b>4,189</b>	<b>4,093</b>	<b>16,835</b>	<b>-160</b>	<b>16,889</b>	
DENTON COUNTY JJ AEP	0	0	0	0	0	0	0	0	0	0	0	0	0	0	0	0	0	0	0	0
LEARNING CENTER	198	0	0	0	1	2	2	3	8	8	18	13	14	31	45	48	193	0	193	
OTHER ALTERNATIVE	0	0	0	0	0	0	0	0	0	0	0	0	0	0	0	0	0	0	0	0
<b>ALTERNATIVE SCHOOL TOTALS</b>	<b>198</b>	<b>0</b>	<b>0</b>	<b>0</b>	<b>1</b>	<b>2</b>	<b>2</b>	<b>3</b>	<b>8</b>	<b>8</b>	<b>18</b>	<b>13</b>	<b>14</b>	<b>31</b>	<b>45</b>	<b>48</b>	<b>193</b>	<b>-6</b>	<b>193</b>	
<b>TOTAL ENROLLMENT</b>	<b>52,060</b>	<b>621</b>	<b>1,642</b>	<b>3,373</b>	<b>3,514</b>	<b>3,359</b>	<b>3,436</b>	<b>3,442</b>	<b>3,533</b>	<b>3,811</b>	<b>3,900</b>	<b>3,968</b>	<b>4,210</b>	<b>4,388</b>	<b>4,234</b>	<b>4,140</b>	<b>51,572</b>	<b>-488</b>	<b>51,736</b>	

Original Projection 2020/21
886
847
458
701
1,034
879
707
650
828
1,080
615
738
798
852
603
<b>11,676</b>
901
808
742
2,770
2,846
2,144
1,298
1,046
2,291
2,043
<b>16,889</b>
0
193
0
193
<b>51,736</b>







# Key Takeaways

**V** – too sharp

**W** – “double dip” recession due to secondary outbreak

**U** – too long at the bottom with too abrupt of a rebound



Forecasted Shape Of The Recovery



- The national unemployment rate is between 16%-18% and Texas' is roughly 12% in April
- After record new home starts in 1Q20, builders expect to complete 80% of 2020 plan
- Existing home listings have decreased by more than 10% due to owners pulling them from the market