

Lewisville ISD Facilities Advisory Committee 2016-17

Thursday, October 20, 2016

William T. Bolin Administrative Center
Board Room

5:30 PM – 9:00 PM

Snack Supper begins at 5:30 PM;
Meeting Content begins at 6:00 PM

Facilitator

Michelle Hughes, TM Strategy & Design Group

Lewisville ISD Mission. . .

Students, staff and community design and implement a learning organization that provides engaging, innovative experiences every day



Lewisville ISD Superintendent. . .

Dr. Kevin Rogers

Your Task Cycle for Tonight. . .

- **Purpose of LISD Facilities Advisory Committee 2016:** Collaborative development of a bond referendum recommendation for presentation to the Lewisville ISD Board of Trustees and ultimately to the Lewisville ISD community in May 2017

Outcomes for tonight. . .

- Aligned work group; cohesive owners of the Facilities Advisory Committee 2016-17 work
- Process Review (Ground Rules; Decision-making Model)
- Review of Facilities Plan and Introduction to Priority Codes
- Learning & Teaching Review
- The Lewisville ISD Safety & Security Needs
- Existing Facilities Projects
- The LISD Technology Plan
- Overview of subsequent meetings (see bottom of task cycle)

Housekeeping. . .

- All presented materials & information will be distributed to you as handouts and on the Lewisville ISD website Facilities Advisory Committee 2016-17 Bond Tab.
- Because of time constraints, no breaks have been scheduled, so please take plumbing or motion breaks as needed. Restrooms and exits are right out the doors behind you.
- Ask any questions. **Unanswered questions or frequently asked questions and answers will be posted on the Lewisville ISD website Facilities Advisory Committee Tab.**
- A committee roster will be distributed. If your information is incorrect, write the correct information on a post-it and leave it on your table. **Your attendance at every meeting will help yield optimum results for this committee and this community.**

LISD Facilities Advisory Committee Ground Rules. . .

- One conversation at a time; no side-bar talk
- Honor the time contract
- Stay on topic and on task
- Share ideas freely; no “duck shooting”
- Listen to understand; respect and honor others’ input
- Think holistically; sublimate personal agendas; consider the whole District.
- Be kind
- Be honest
- Be relentless in pursuing consensus
- HAVE FUN!

Let's Review. . .

- Facilities Assessment
- Shared Understanding of Priority Codes

Jason Hughes,
Executive Director of Facilities Planning

Randy Fite,
Director of Construction

Facilities Assessment Review & Priority Codes

Jason Hughes, Executive Director of Facility Services and Construction

Randy Fite, AIA, Director of Construction

October 20, 2016



LEWISVILLE INDEPENDENT SCHOOL DISTRICT

**Engaging and
meaningful
student
learning based
on:**

**High Quality
Curriculum**

**Relevant
Resources**

**Facilities that
provide:**

**Safety &
Security
Inspiration
Collaboration
Innovation**



**Students are
engaged in
school through:**

**Clubs
Organizations
Fine Arts
Athletics
CTE**

**Education is
the shared
responsibility
of the
community**

Discussion Items



**LISD
Facilities
Context**



**Facilities
Assessment
Study**



**Priority
Code
Criteria**

LISD Facilities Context

- During the mid to late 1990's, the District experienced enormous growth - at times averaging 2,000 students per year
- District is moving from a fast-growth district into a sustainability period that includes maintenance and stewardship of existing facilities
- Rapid growth and resulting construction in mid to late 1990's created a bubble of facilities all reaching 20 years of age at about the same time



The background of the slide is a dark blue gradient with numerous out-of-focus light spots in various colors including red, yellow, green, and white, creating a bokeh effect.

Facilities Assessment

Facilities Assessment Study

- Board charged us with the task of performing the Facilities Assessment with LISD personnel. Previous studies were performed using outside consultants
- Provides a method to identify and manage building system needs within a large District of over 80 facilities
- Every facility and major building system and component was inspected and evaluated by LISD Facility Services personnel
 - HVAC, Roofing, Electrical, Flooring, etc.
- Provides a comprehensive look at the age and condition of each building and major building components
- Document to be updated annually going forward
 - In keeping with its purpose as an ongoing tool for use in facilities planning, the next revision planned this Spring



Evaluation Criteria

- Facility systems and components individually evaluated and scored using three factors:
 - Percent Life Remaining – The amount of service life expressed as a ratio of the item's remaining useful life compared to its expected life cycle
 - Work Order History – Formula derived score comparing five years of historical maintenance costs for a system to the average cost to maintain that system in similar buildings across the district
 - Visual Examination – A score given based on a physical examination of each system/component relative to its expected life-cycle performed by LISD expert technicians



Evaluation Criteria

- Averaging the evaluation scores from:
 - Percent Life Remaining
 - Work Order History
 - Visual Examination
- = the Total Assessment Score
 - More accurate picture of the system/component condition
- Because the score is a percentage of life remaining we can project the data over the life of the facility providing a long range replacement plan



The background of the slide is a dark blue gradient with numerous out-of-focus light spots in various colors including red, yellow, green, and white, creating a bokeh effect.

Priority Codes

Priority Codes

1

Must Do

**Legal, Safety,
Critical,
Capacity and
Life Cycle
Replacement**

2

Should Do

**Curricular,
Instructional
and Program
Needs**

3

**Would Like
To Do**

**Curricular and
Program
Enhancements**

Score to Priority Codes

- Assessment scores were used to forecast the need for construction projects in the five year planning window
- Scores identify the systems reaching the end of their respective life-cycles
- The scores combined with the professional judgement of Facility Services personnel lead to the priority assignments
- The type of system also establishes the priority
 - Fire sprinkler vs. wall coverings

Take-Aways

- **The Assessment Document provides objective data for planning future facilities needs and associated timelines**
- **The scores in the Facilities Assessment document are a significant factor that when combined with professional judgement determines the priority code assignment based on the definitions**





Let's Review. . .

Learning & Teaching

Lori Rapp,

Assistant Superintendent of
Learning & Teaching

Learning & Teaching Connecting the Dots

**Lori Rapp, Assistant
Superintendent Learning and
Teaching**

October 20, 2016



LEWISVILLE INDEPENDENT SCHOOL DISTRICT

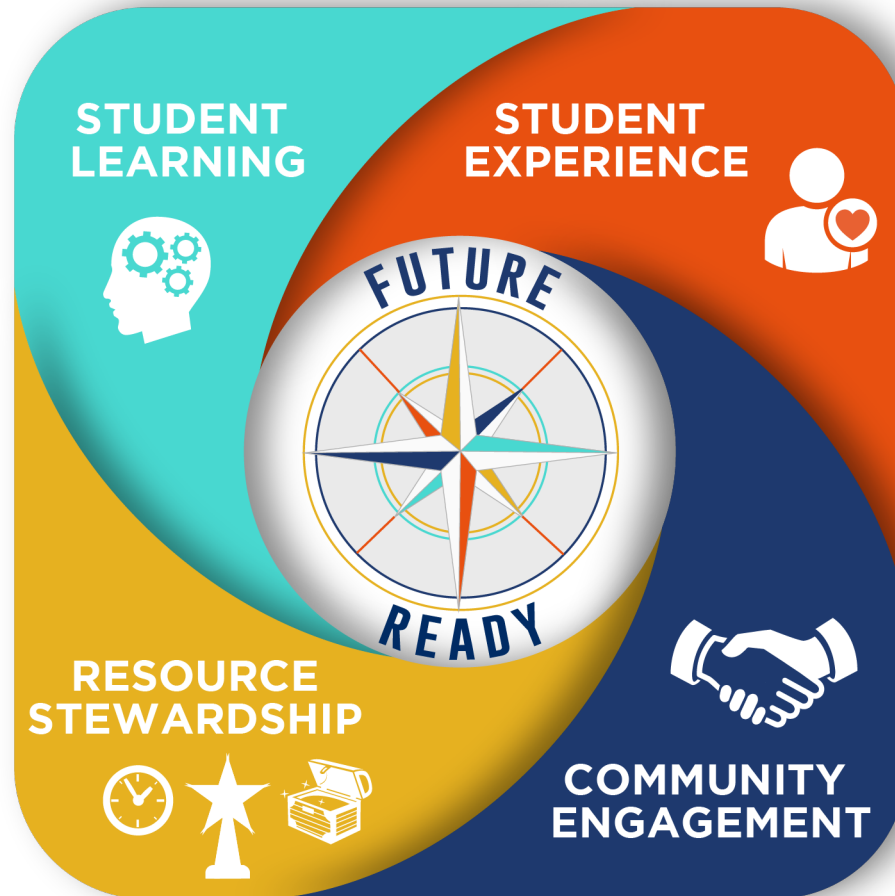
**Engaging and
meaningful
student
learning
based on:**

**High Quality
Curriculum**

**Relevant
Resources**

**Facilities
that provide:**

**Safety &
Security
Inspiration
Collaboration
Innovation**



**REAL INNOVATION. LIMITLESS OPPORTUNITY.
LEWISVILLE INDEPENDENT SCHOOL DISTRICT**

**Students are
engaged in
school
through:**

**Clubs
Organizations
Fine Arts
Athletics
CTE**

**Education is
the shared
responsibility
of the
community**



Students are benefiting from research, resources and new discoveries that continuously improve our ability to meet the needs of students

These are exciting times for learning!



Workforce demands and changes impact the type of learning environment students need.

**Industrial age workforce
vs. Information/Digital
age workforce**



Teacher Support & Retention

Supporting teachers with professional learning and resources is critical for preparing students for a changing workforce.

Over 1,258 professional learning sessions offered for teachers during summer 2016

LISD teacher turnover rate
11.7%

State teacher turnover rate
16.6%



Today's students:

- face higher expectations in both school and the workforce
- will graduate into a world where the demands of our professional, personal and public lives grow more complicated every year.





Lillie Jackson Early Childhood Center Pre-kindergarten Class of 2029!

A decorative border consisting of several overlapping, curved bands of blue, ranging from a deep navy blue to a bright sky blue, framing the top-left and top-right corners of the slide.

Any Questions, Comments or
Feedback? . . .



A Look At Safety & Security in LISD. . .

Matt Garrett, Director of Safety & Security

LISD Safety & Security Needs

Matthew Garrett, Director of Safety & Security

October 20, 2016



LEWISVILLE INDEPENDENT SCHOOL DISTRICT

How is 'need' determined?

- All-hazards emergency planning
- Public safety partnerships
- Safety & security audits

All-Hazards Emergency Planning

- Addresses a range of hazards
- Identify common protocols, systems and tools



Public Safety Partnerships

- Active partners with planning and incident response
- Invested in ensuring school safety





Safety & Security Audits

- Intruder assessments
- Identify trends and campus needs



Proposed Project List

Deter, Deny, Notify and Expedite

4.1- Life Cycle Safety & Security Items

4.2- Expansion of District Wide Security Cameras

4.3- Re-Design Campus Entrances and Install Ballistic Protection

4.4- Communication and Network Access Completion

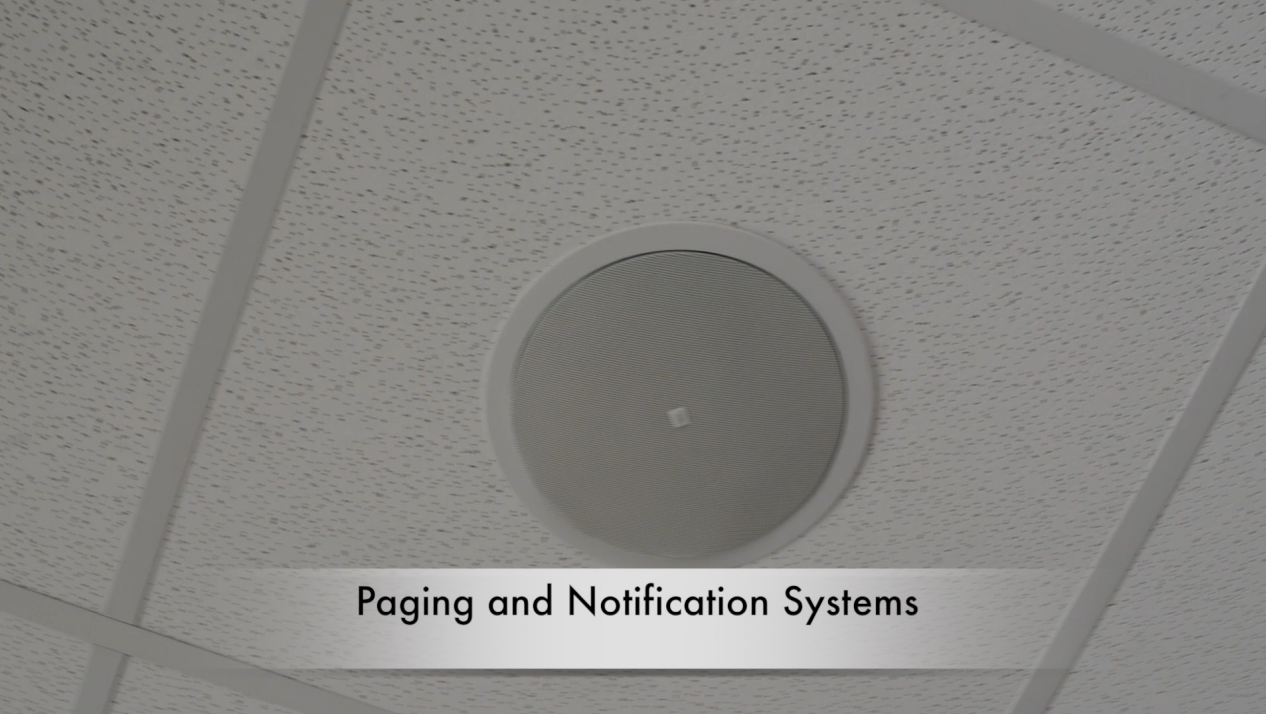


Project 4.1 – Life Cycle Safety and Security Items

- Upgrade access control system
- Upgrade phone, paging and notification systems
- Upgrade energy efficient exterior lighting
- Estimated Cost: \$11,103,901



Door Access Control



Paging and Notification Systems



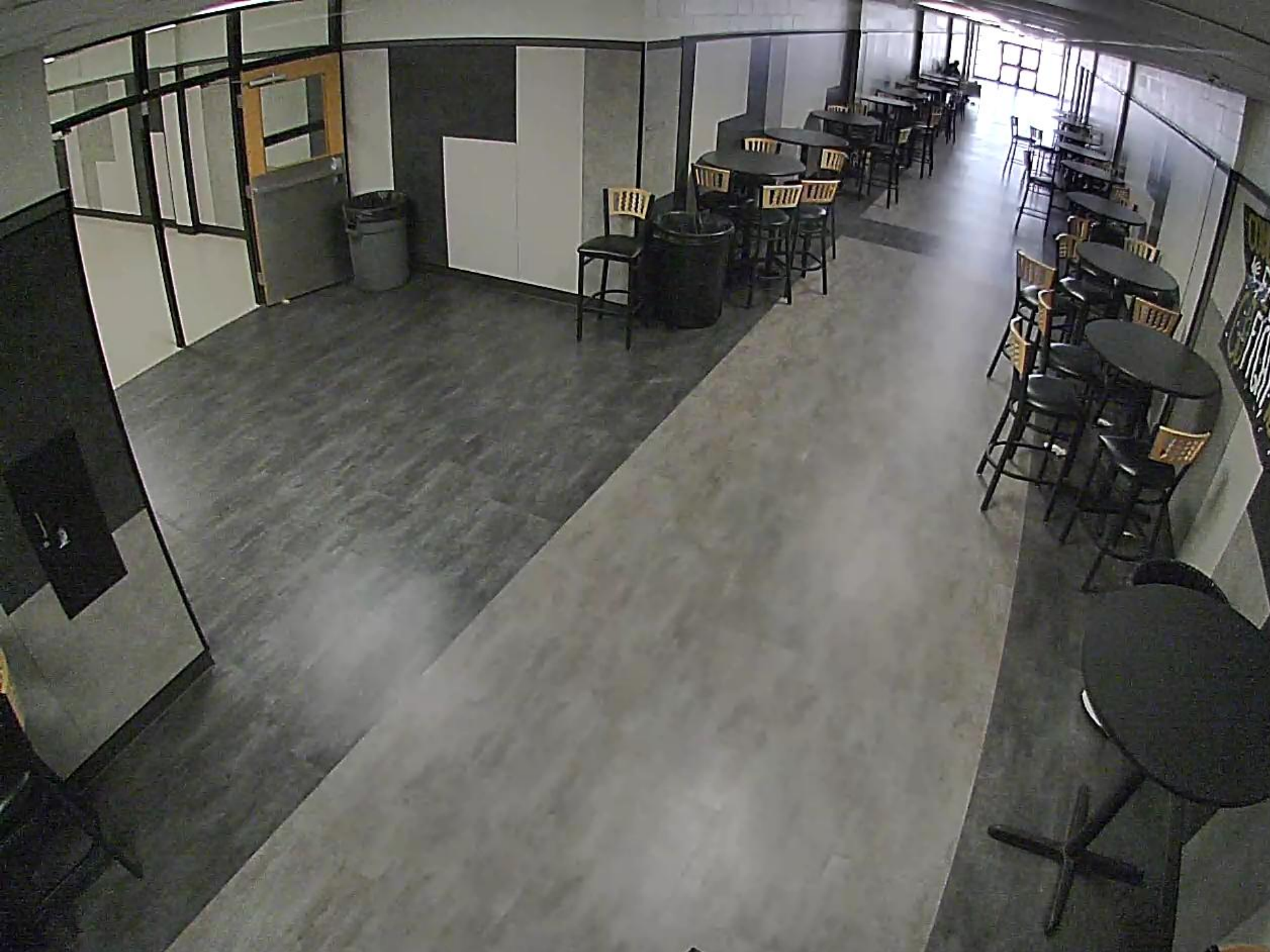
Phones Use For Communication and Emergency



Project 4.2 - Expansion of District-Wide Security Cameras

- Install approximately 1,200 interior and 650 exterior cameras
- Acquire storage and network infrastructure
- Replace 982 older model cameras
- Estimated Cost: \$3,300,000





Project 4.3 – Redesign Campus Entrances and Ballistic Protection

- Builds upon previous projects
- Ensure classroom doors are not in the security vestibule
- Redesign office layout to prevent unauthorized access
- Estimated Cost: \$13,737,998







2nd Grade Writing
3rd Grade Writing
4th Grade Writing
5th Grade Writing
6th Grade Writing
7th Grade Writing
8th Grade Writing
9th Grade Writing
10th Grade Writing
11th Grade Writing
12th Grade Writing

Please
sign in at
the
Front Office

Kindergarten
1st Grade
2nd Grade
Library



Project 4.4 – Communication and Network Access Completion

- **Six facilities**
 - **VoIP phones**
 - **Networked lighting control**
 - **Security camera access/storage**
 - **Networked access control**
- **Estimated Cost: \$693,000**

Current example timeline for medical emergencies



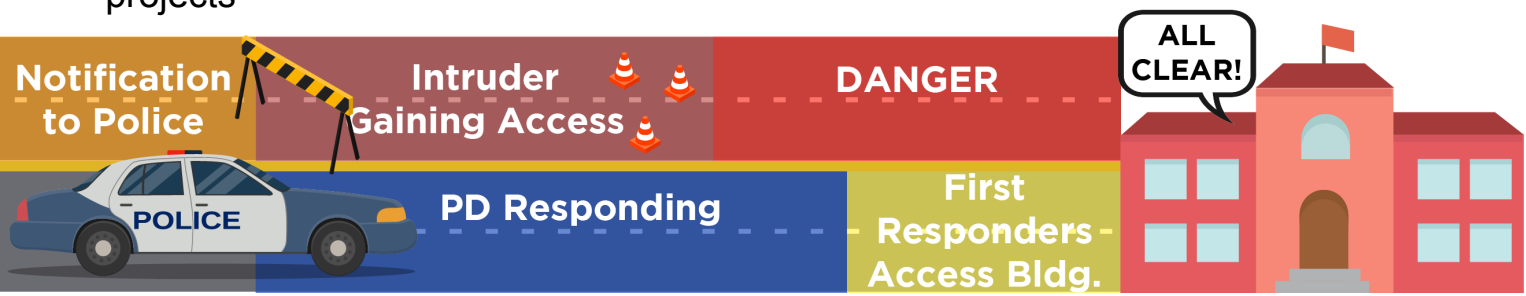
Example of timeline improved with bond projects



Current example timeline of an intruder incident



Example of timeline improved with bond projects





*Our goal is simple; at
the end of the day,
everyone safely
arrives home.*

A decorative border consisting of several overlapping, curved blue bands of varying shades, located in the top-left and top-right corners of the slide.

What Questions or Feedback Do
You Have For Mr. Garrett? . . .

A decorative graphic element consisting of several overlapping, curved blue bands that sweep across the top left and top right corners of the slide, creating a sense of motion and depth.

What Projects Support Our Existing Facilities?

Jason Hughes

Randy Fite

Existing Facilities Needs

Jason Hughes, Executive Director of Facility Services & Construction

Randy Fite, AIA, Director of Construction

October 20, 2016



LEWISVILLE INDEPENDENT SCHOOL DISTRICT

**Engaging and
meaningful
student
learning based
on:**

**High Quality
Curriculum**

**Relevant
Resources**

**Facilities that
provide:**

**Safety &
Security
Inspiration
Collaboration
Innovation**



**Students are
engaged in
school through:**

**Clubs
Organizations
Fine Arts
Athletics
CTE**

**Education is
the shared
responsibility
of the
community**

20 Year Renovations

- Many building systems and components share a life-cycle of approximately 20 years, including:
 - HVAC
 - Roofing
- HVAC and overhead systems replacement requires that the building be emptied
 - Perfect opportunity to renovate many items while the building is unoccupied and empty of contents
 - Allows for limited disruption to the campus



20 Year Renovations

- Scope of work includes renovation or replacement of:
 - Critical life safety systems
 - Fire alarm, fire sprinkler, emergency generator
 - Major building components
 - HVAC, roof, ductwork, electrical, ceilings, lights, walk-in cooler /freezer, doors and hardware
 - Safety and Security
 - Secure entrance, security cameras
 - Technology
 - Infrastructure, classroom equipment, Intercom/ bell system, stage sound
 - Finishes
 - Flooring, paint, restrooms, walls, casework



20 Year Renovations

20 Year Renovations Elementary Schools (Priority 1)

\$134,378,937

- Polser Elementary School
- Creekside Elementary School
- Central Elementary School
- Timbercreek Elementary School
- Degan Elementary School
- Parkway Elementary School
- Prairie Trail Elementary School
- Valley Ridge Elementary School
- Forest Vista Elementary School
- Homestead Elementary School
- Bridlewood Elementary School
- Wellington Elementary School
- Southridge Elementary School
- Bluebonnet Elementary School



20 Year Renovations

20 Year Renovations High Schools (Priority 1)

\$74,622,033

- Marcus High School limited renovation
- The Colony High School limited renovation
- Flower Mound High School – Phase 1
- Hebron High School – Phase 1



Life Cycle Replacements

- Items identified in the Facilities Assessment Document as needing replacement within the next five years
- Roofing Replacements (Priority 1) \$2,770,921
 - Ethridge Elementary School
 - Heritage Elementary school
 - Facility Services
- Electrical Renovations (Priority 1) \$3,401,679
 - Lakeview Middle School
 - Lamar Middle School
 - Stewarts Creek Elementary School



Life Cycle Replacements

- **Playground Replacement (Priority 1) \$1,336,882**
 - **Valley Ridge Elementary School**
 - **Forest Vista Elementary School**
 - **Bridlewood Elementary School**
 - **Homestead Elementary School**
 - **Wellington Elementary School**
 - **McAuliffe Elementary School (Pre-K only)**



Life Cycle Replacements

- **Flooring Replacements (Priority 1) \$2,505,031**
 - Lakeview Middle School
 - Indian Creek Elementary School
 - Hebron Valley Elementary School
 - Castle Hills Elementary school
 - Liberty Elementary School
 - Lamar Middle School
 - Vickery Elementary School
 - Rockbrook Elementary School
 - Coyote Ridge Elementary School
 - Shadow Ridge Middle School
 - LHS Killough High School



Life Cycle Replacements

- Restroom Renovations (Priority 2) \$6,510,363
 - Stewarts Creek Elementary School
 - Ethridge Elementary School
 - Lakeview Middle School
 - Hebron Valley Elementary School
 - Flower Mound Elementary School (Staff Only)
 - Heritage Elementary School
 - Morningside Elementary School
 - Donald Elementary School
 - Garden Ridge Elementary School
- Corridor Wall Finishes (Priority 2) \$1,362,511
 - Lakeview Middle School
 - Flower Mound Elementary School
 - Indian Creek Elementary School



Additions to Existing Facilities

- 10 Classroom Addition Bluebonnet Elementary School (Priority 2) \$4,314,012
- 10 Classroom Addition LHS Harmon (Priority 2) \$5,078,455
- The Colony High School Entry Reconfiguration (Priority 2) \$2,734,295
- LISD Outdoor Learning Area (LISDOLA)
 - Option A (Priority 1) \$3,782,776
 - Building with 4 classrooms, restrooms, new paving, bus drop, portable renovations
 - Building to serve as a storm shelter for the site
 - Option B (Priority 2) \$9,321,157
 - Building with 10 classrooms, meeting room, restrooms, offices, clinic, science store, new paving, and bus stop
 - Building to serve as a storm shelter for the site



Renovations to Existing Facilities

- **Distribution Center Renovation (Priority 1) \$349,883**
- **College Street Elementary School (Priority 1) \$3,268,714**
- **Campus Support Center (Priority 1) \$623,186**
- **Dale Jackson Career Center (Priority 1) \$4,965,752**
- **Renovations needed for possible Academies (Priority 1) \$6,487,549**



Summary

Existing Facilities Projects	Priority 1	Priority 2	Priority 3
Elementary Schools - 20 year Renovations	\$134,378,937	\$0	\$0
High Schools - 20 year Renovations	\$74,622,033	\$0	\$0
Life Cycle Building Component Replacements - Priority 1	\$10,014,513	\$0	\$0
Life Cycle Building Component Replacements - Priority 2	\$0	\$7,872,874	\$0
Classroom Additions to Existing Schools	\$0	\$9,392,467	\$0
The Colony High School Entry Reconfiguration	\$0	\$2,734,295	\$0
LISDOLA Option A	\$3,782,776	\$0	\$0
LISDOLA Option B	\$0	\$9,321,157	\$0
Renovation of existing facilities	\$9,207,535	\$0	\$0
Academy Renovations	\$6,487,549	\$0	\$0
Total	\$238,493,343	\$29,320,793	\$0



Final Thoughts

- The needs discussed tonight represent projects identified using the Facilities Assessment Study Report – an objective tool to identify the condition of LISD buildings and to assist in prioritizing the needs
- Priorities are assigned based on the objective scores in the assessment document combined with professional judgment about how the needs fit into the definitions provided
- The list presented will be provided on the FAC webpage with hyperlinks to additional information



A decorative border consisting of several overlapping, curved blue bands of varying shades, starting from the top left and curving towards the top right.

What Questions, Comments or
Feedback Do You Have For Mr. Hughes
and Mr. Fite?

A decorative graphic element consisting of several overlapping, curved blue bands that sweep across the top left and top right corners of the slide, creating a sense of motion and depth.

What Is The Technology Plan in LISD?

**Bryon Kolbeck, Executive Director of
Technical and Information Services**

Technology Planning

Bryon Kolbeck, Executive Director of Technical & Information Systems

Lori Rapp, Assistant Superintendent of Learning and Teaching

Michele Jacobsen, Director of Digital Learning



LEWISVILLE INDEPENDENT SCHOOL DISTRICT

Presentation Takeaways

Provide information to help guide questions & deepen committee's understanding:

- **Technology plays a vital role in:**
 - student learning
 - operations within the district
 - safety and security (as shared by Matthew Garrett)
- **Significant infrastructure**
 - Needed to support how and why technology is used
- **There are processes in place for evaluation and review of technology**

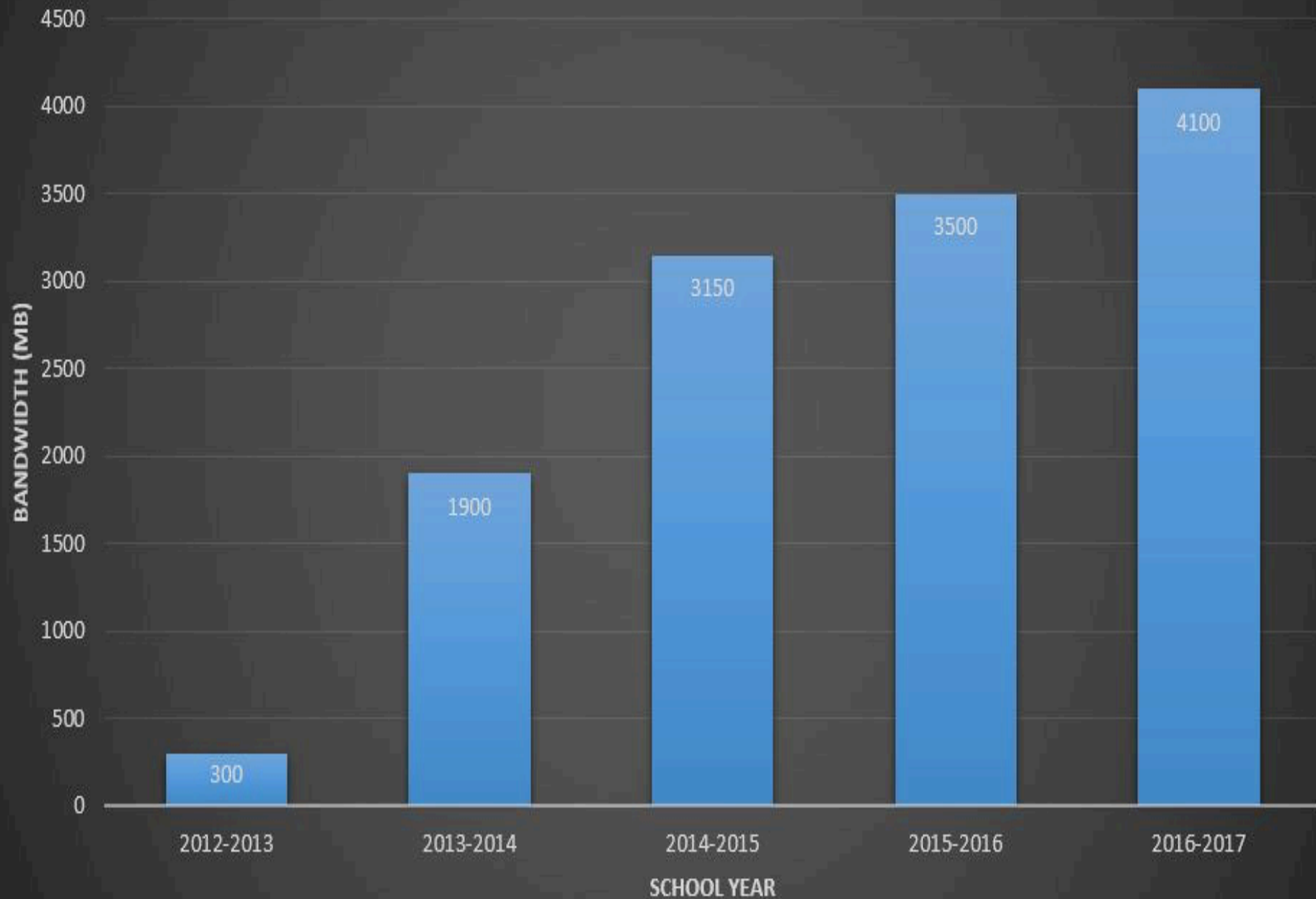


**“We need to
prepare students
for their future,
not our past”**

Ian Jukes

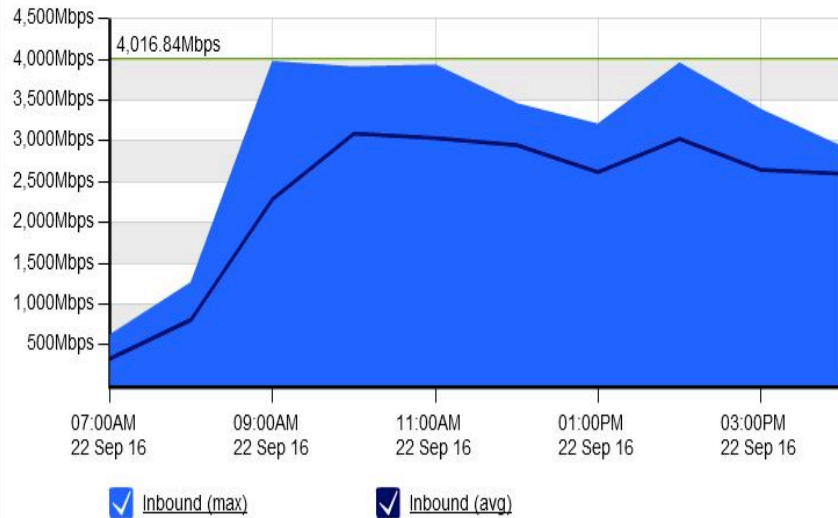


LISD Bandwidth Usage



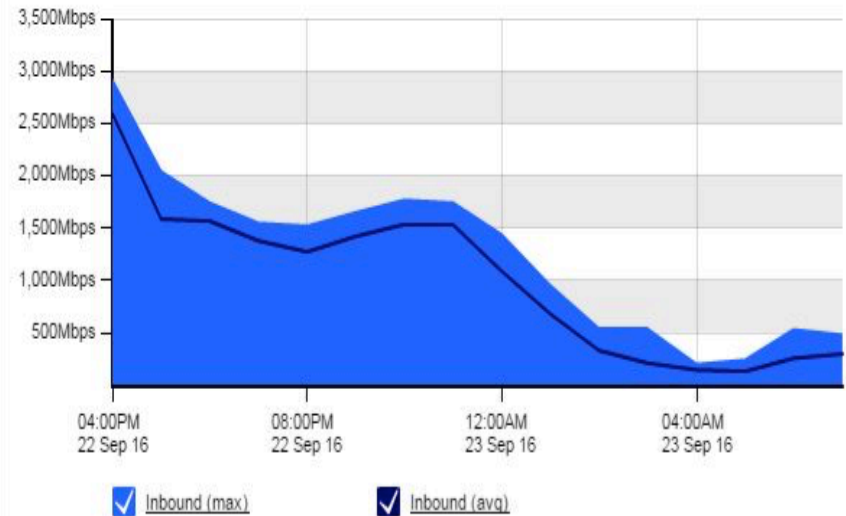
Internet Usage During the School Day

Interface Inbound Throughput (ALL)

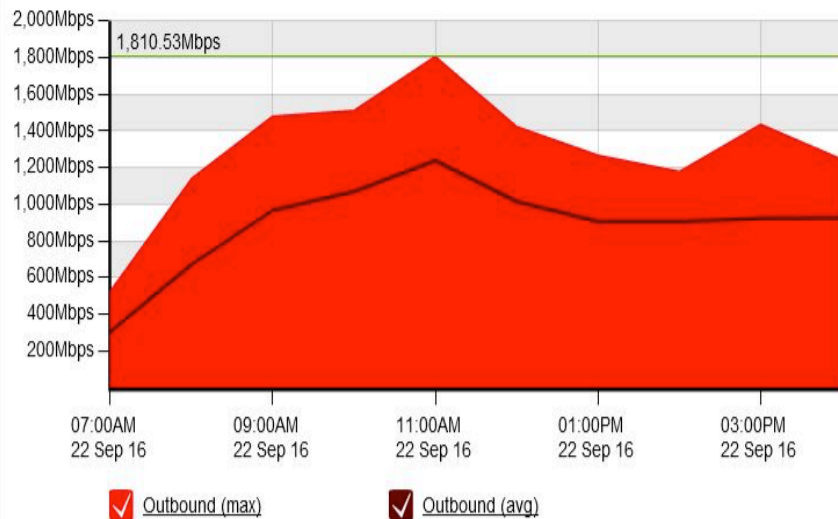


Internet Usage After School Day

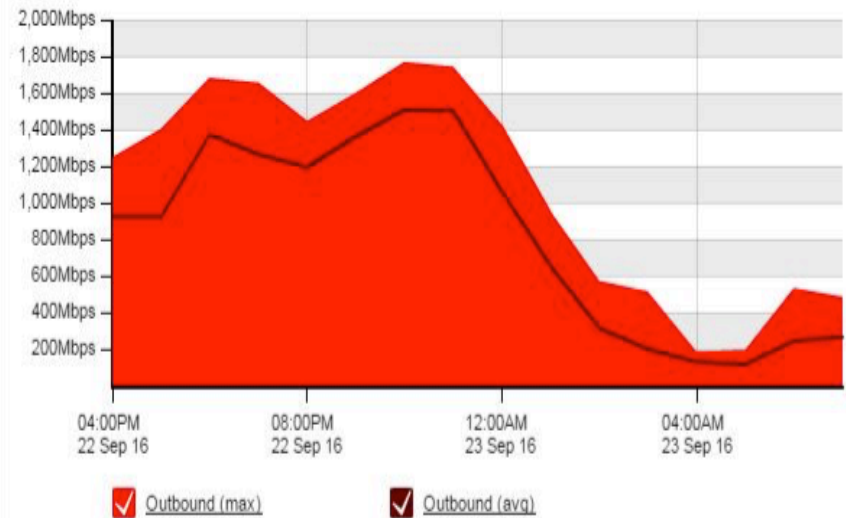
Interface Inbound Throughput (ALL)



Interface Outbound Throughput (ALL)



Interface Outbound Throughput (ALL)



Increase in number of devices

Managing

- 51,266 iOS
- 13,160 MacOS
- 14,650 Windows
- 9,300 Chromebooks



Increase in Digital Content

LISD APP Store



**283 Apps For
Elementary**

Digital Instructional Materials



**45 Unique
District Adopted
Digital Resources**

Internet Content



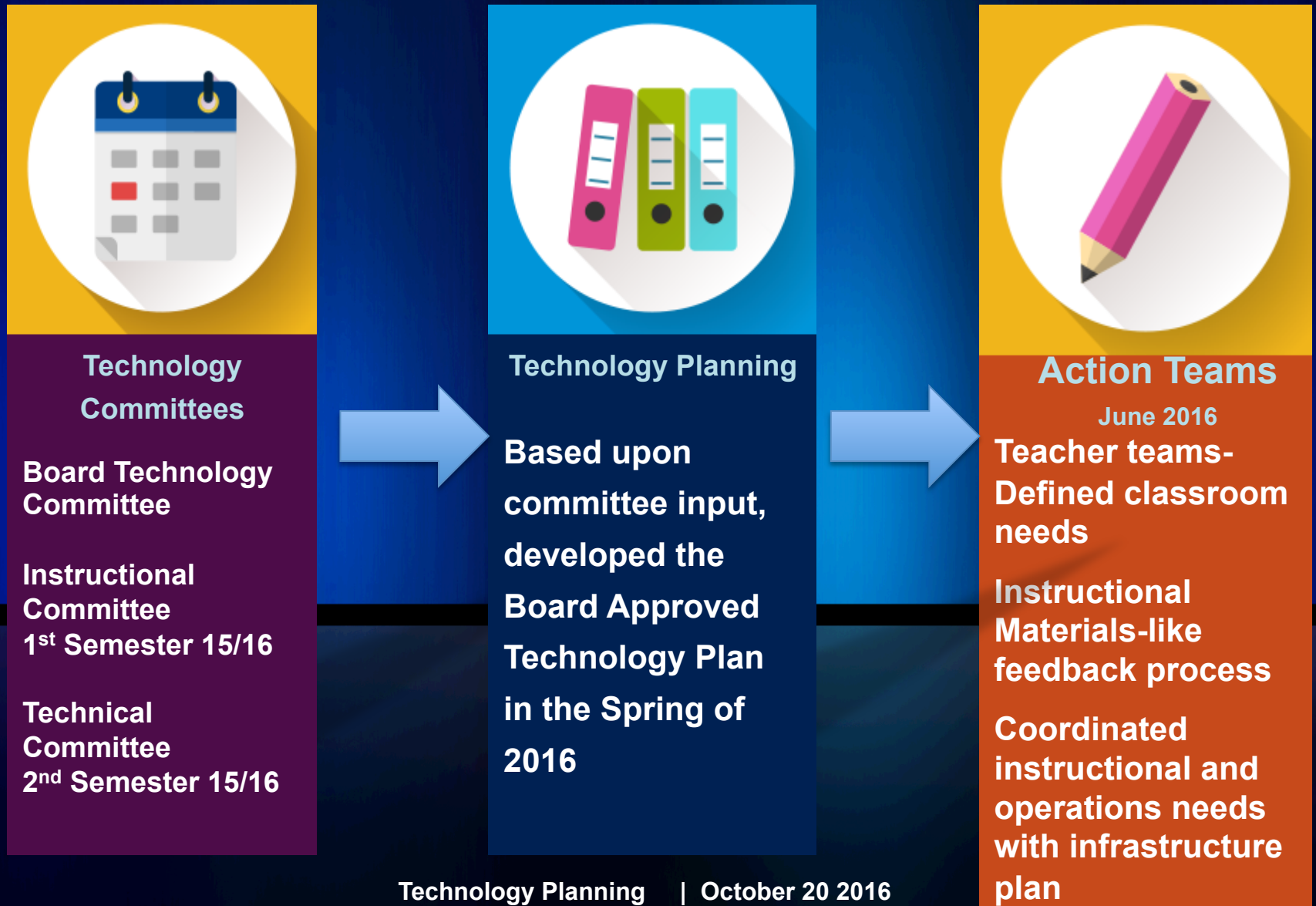
**Volume of
Content
Media Rich
Content
Assessment Use**

Student Safety and Privacy

LISD was 1 of 7 School Districts in the U.S. to earn the Trusted Learning Environment Seal



Technology Planning Process



Technology Plan Provides

Instructional Technology Task Force

Professional Learning

**Instruction/Learning
Experiences**

**Digital Citizenship/
Technological Literacy**

Community Technology Experts

Infrastructure

Technology Resources

Data and Privacy



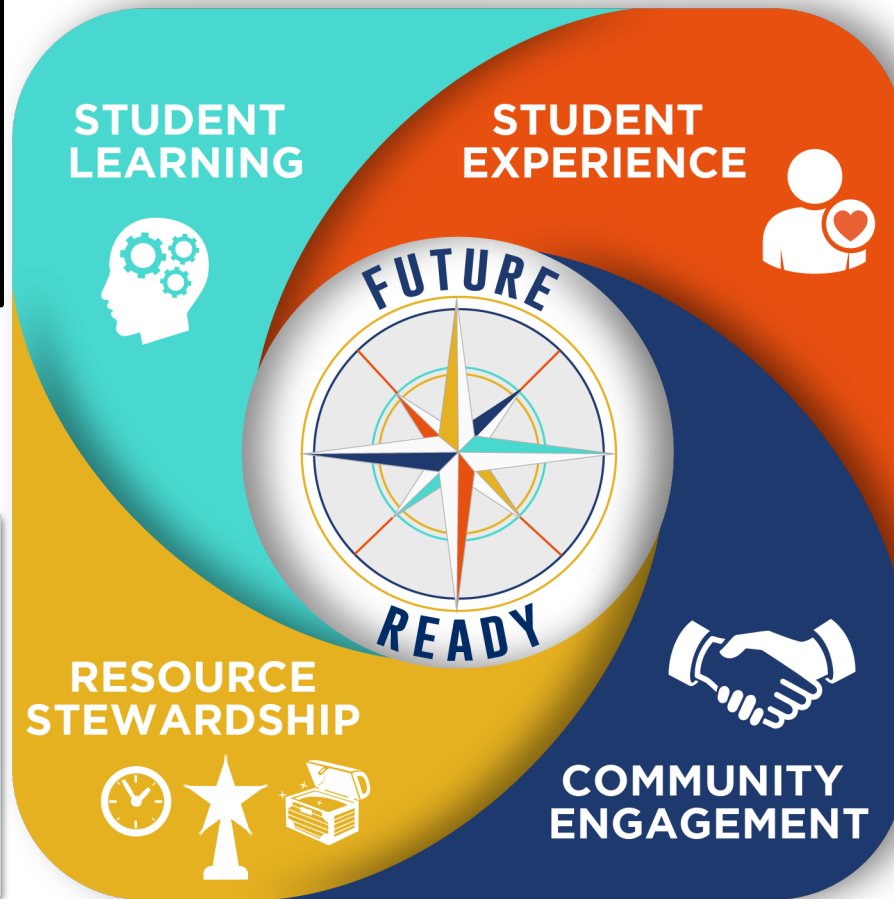
Engaging and meaningful student learning based on:

High Quality Curriculum

Relevant Resources

Facilities that provide:

**Safety & Security
Inspiration
Collaboration
Innovation**



Students are engaged in school through:

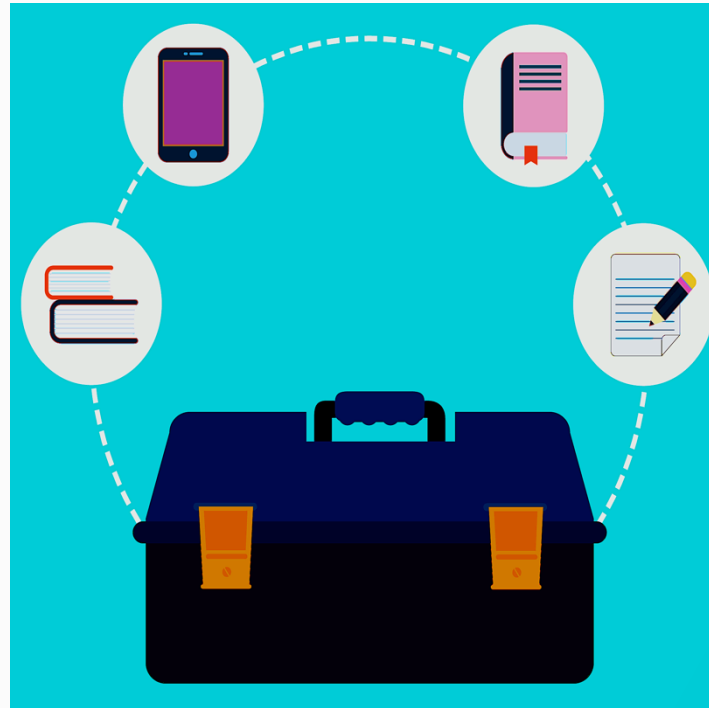
**Clubs
Organizations
Fine Arts
Athletics
CTE**

Education is the shared responsibility of the community

**REAL INNOVATION. LIMITLESS OPPORTUNITY.
LEWISVILLE INDEPENDENT SCHOOL DISTRICT**

Student learning – Access to Relevant Resources

- Teacher and Students need access to “tools” for the learning required
 - Literature/Books
 - Manipulatives
 - Hands-On Materials
 - Technology
 - Experts in the field
 - Supplies
 - Software/Programs
 - Assessments



Learning Environments

“Central to this new type of learning engagement is a shift in the learner's role, from a passive consumer of information to an active developer of the knowledge and skills that the learner considers important for his or her future.

The traditional school model is predicated on the idea of students as consumers of knowledge.



Today's students place a higher premium on the experience of creating content and sharing their discoveries, masterpieces, and manuscripts with the world. They also expect to use technology to direct and monitor their own learning experiences.” (Evans, 2015)



Texas Essential Knowledge & Skills (TEKS)

What are students expected to do?

Technology Application TEKS 3-5

Critical thinking, problem solving, and decision making. The student researches and evaluates projects using digital tools and resources. The student is expected to:

- (A) identify information regarding a problem and explain the steps toward the solution;
- (B) collect, analyze, and represent data to solve problems using tools such as word processing, databases, spreadsheets, graphic organizers, charts, multimedia, simulations, models, and programming languages;
- (C) evaluate student-created products through self and peer review for relevance to the assignment or task; and**
- (D) evaluate technology tools applicable for solving problems.





Information Access

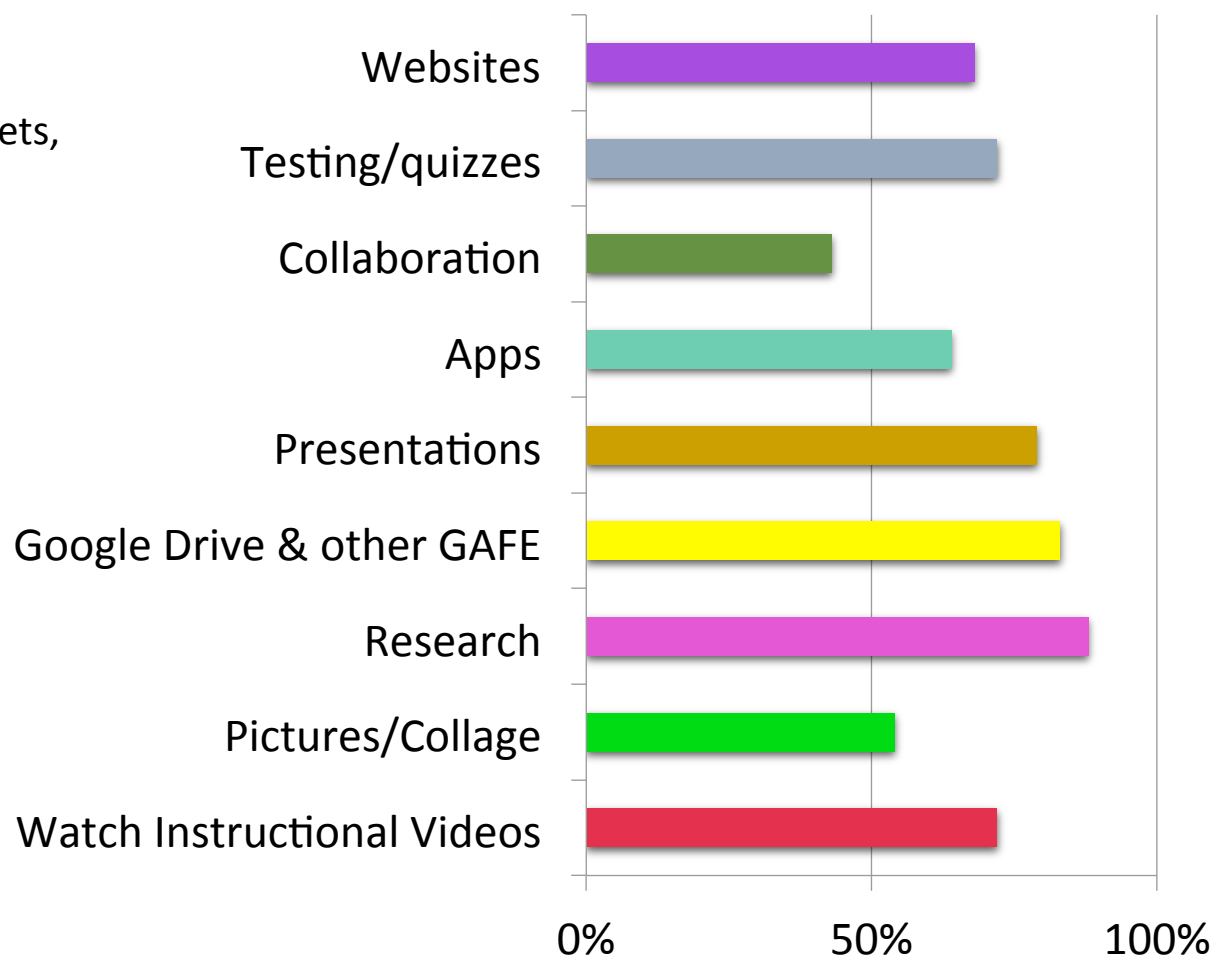
Students spend
13,000+ hours in
school and are
required to learn over
900 content standards
in Math, Science,
Language Arts, and
Social Studies alone.



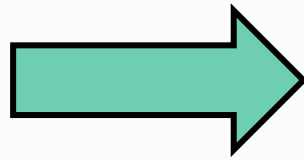
Q12 What kind of learning activities do you do, or have you done, in class with technology?

Elementary, Middle, and High School Students most frequently use their technology for:

- Research
- Google Drive (Docs, Sheets, Slides, ePortfolios)
- Presentations
- Assessment



*13,114 student responses



Google Drive



For people without disabilities and specialized learning needs technology makes things easier.

For people with disabilities and specialized learning needs technology makes things possible.

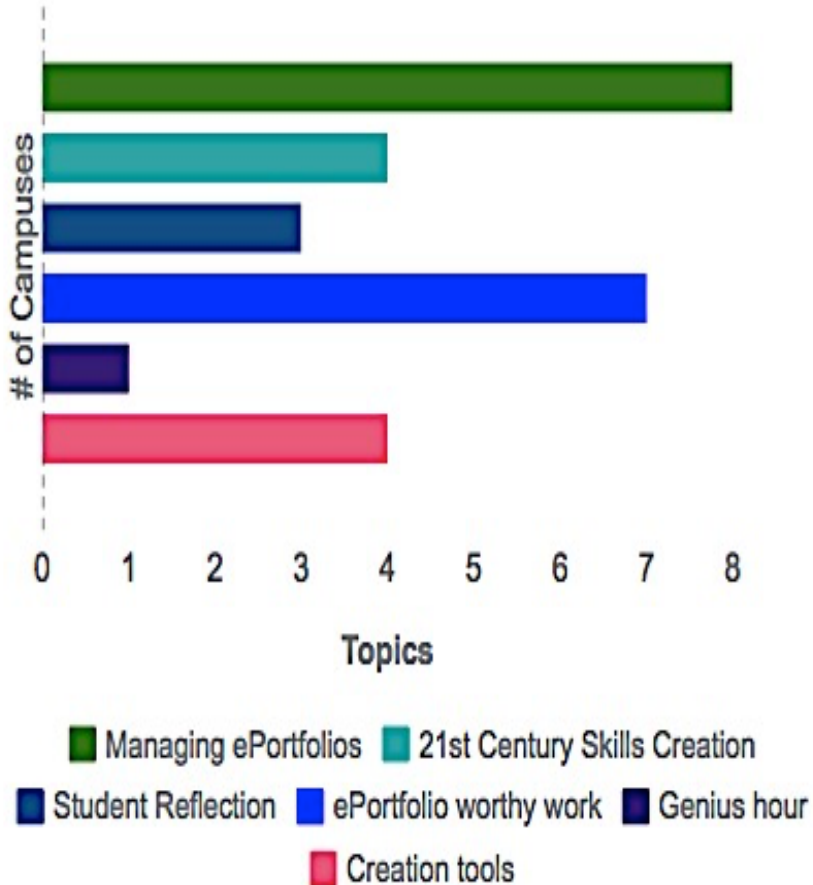


eReaders
Captions
Video taping
Assisted listening
Touch screens
Speech recognition
software
Word processors



Professional Learning

ES School



- Campus Administration and staff are seeking out
- Professional learning has evolved
- Not just one time – ITFs (Instructional Technology Facilitators) support throughout the year
- Focusing on 21st century skills
- Access to student learning devices is critical

Priority Levels Of Student and Staff Access

Priority 1

(Maint. Current Model)

- Instructional Devices for students & staff: \$48,220,718
- Programs/ Operations: \$11,174,150
- **Total: \$59,394,868**

Priority 2

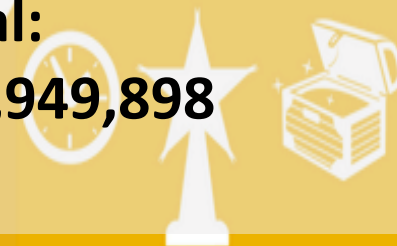
(Current Model + Addressing Needs For Grades PK-3)

- Instructional Devices for students & staff: \$65,984,160
- Programs/ Operations: \$11,174,150
- **Total: \$77,158,310**

Priority 3

(Reduction of Access From Current Model)

- Instructional Devices for students & staff: \$37,775,748
- Programs/ Operations: \$11,174,150
- **Total: \$48,949,898**



Priority Levels Of Student and Staff Access

Priority 1

(Maint. Current Model)

- **Total: \$59,394,868**
- Maintains Access 4th-12th
- Consistency across campuses w/District provided
- 5 year refresh for student devices
- Similar accessibility to instructional digital materials

Priority 2

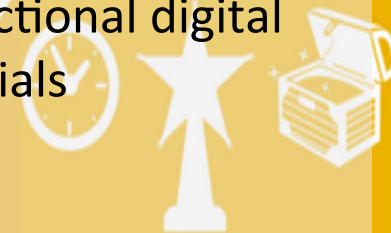
(Current Model + Addressing Needs For Grades PK-3)

- **Total: \$77,158,310**
- Increases classroom access PK-3
- Consistency across campuses w/District provided
- 4 yr refresh for student devices
- Increased accessibility to instructional digital materials
- Provide access to Special Programs

Priority 3

(Reduction of Access From Current Model)

- **Total: \$48,949,898**
- Reduction of access across all levels
- Consistency across campuses w/District provided
- 5 year refresh for student devices
- Decreased accessibility to instructional digital materials



Technology Plan Provides

Instructional Technology Task Force

Professional Learning

Instruction/Learning
Experiences

Digital Citizenship/
Technological Literacy

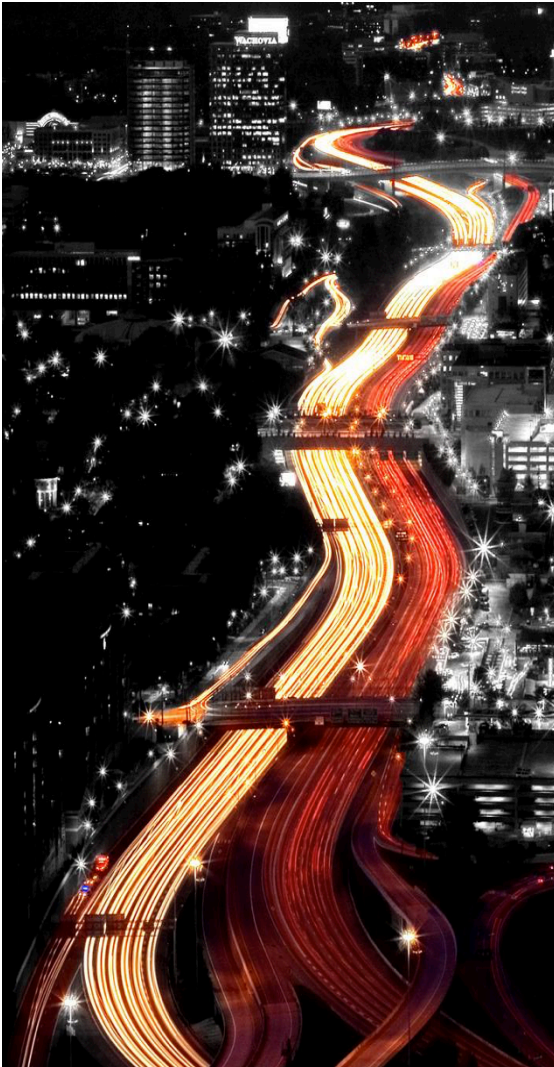
Community Technology Experts

Infrastructure

Technology Resources

Data and Privacy





Infrastructure Highway- What Is On The Highway?

- Instructional
- Operational
- Safety & Security





Infrastructure- What is the Highway Made Out Of?

Infrastructure Needs

Growth Trends

Determined Equipment Lifecycles

Established replacement for infrastructure

Alignment with the Facilities project list

Manufacturer reviews/roadmaps, secure pricing

Recognition of the dependency and need for redundancy



Infrastructure Project Cost

- Classroom Technology
 - Projectors, Printers, Wireless Projection, Classroom Audio Replacements: \$6,482,004
- Data Center, Infrastructure, Security: \$30,739,031
- Campus Sound and Paging: \$2,500,000

- Total Priority 1 Infrastructure Costs: **\$39,721,035**



Total Project Cost

	Maintain Current Access Model	Maintain Current Access Model + Addressing Access Needs for Grade PK-3	Reduction of Access From Current Model
Project	Priority 1	Priority 2	Priority 3
Student and Staff Access	\$59,394,868	\$77,158,310	\$48,949,898
Infrastructure	\$39,721,035	\$39,721,035	\$39,721,035
Total	\$99,115,903	\$116,897,345	\$88,670,933

*We are committed to retiring the bonds consistent with life of the assets

Considerations

Technology

- impacts all students and staff in LISD
- is so much more than a student mobile learning device
- of the future, cannot be purchased today
- usage, demands continued investment in infrastructure
- access for student learning varies within priorities 1, 2, & 3



**“We need to
prepare students
for their future,
not our past”**
Ian Jukes





What Questions, Comments or Feedback
Do You Have For Mr. Kolbeck?

Process Check/Likes & Wishes

[illegible]



Next Meeting
Thursday, November 17

New/Reconfigured Facilities
CTE
Fine Arts

Don't Miss It!