

Wellington Elementary School

Campus Profile

SCHOOL HOURS 7:45 a.m. to 3 p.m. **GRADES** Pre-K through 5th grade
ONLINE lisd.net/wellington | facebook.com/wellingtones | twitter.com/wellington_lem

STUDENT INFORMATION

800 Students
97.4% Average daily attendance

STAFF INFORMATION

68.95 Total staff members
15.6 Average number of years teaching experience
10.9 Average number of years teaching in LISD schools

PROFESSIONAL LEARNING

Total number of hours the staff spent developing their job skills last year

5,590

79.9

Average professional learning hours per Lewisville ISD staff member



OBSERVATION

421 Number of administrator visits to observe class instruction

140 Average number of classroom visits per administrator

At Wellington Elementary, we pursue:

- Perseverance
- Partnership
- Potential

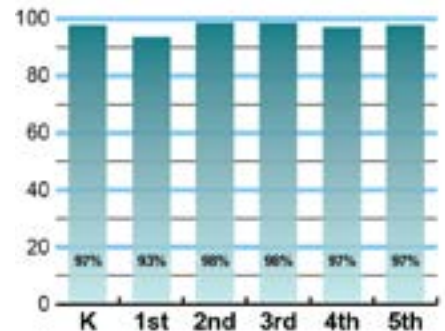
Wellington Elementary, in partnership with home and community, will promote a safe, positive, and nurturing environment that is dedicated to meeting the needs of all students. We are passionate about developing the potential of each child by using a curriculum that is aligned with state standards, designed to develop higher-level thinking skills, and create a desire for lifelong learning. Our students have a growth mindset, which allows them to persevere and accomplish their goals and become 21st-Century learners.



ACADEMIC PERFORMANCE

Istation by grade level

Lewisville ISD monitors students' reading progress through the Istation computer program. Teachers can quickly assess which students need help. This chart shows the percent of students reading on grade level or showing six months growth at the end of the school year.



CLUBS

Students engage in learning of their choice beyond the classroom through clubs. Ours include Kindness Ambassadors, Student Council, Jump Rope Club, Fuzzy Cats, Young Rembrandts, A Lil' Bit of Broadway, Wize Academy Coding, Sapphires Dance Club, Lego Love Club, Architecture Club, and Honor Choir.



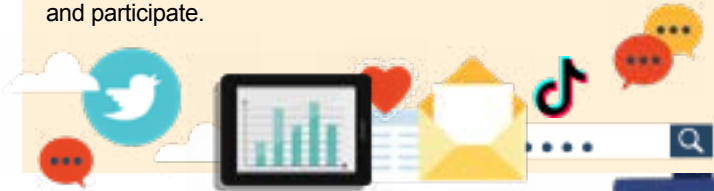
What do our parents think?

In April 2021, parents were surveyed about the campus their child attends. Values represent the percentage of respondents who agree. Based on 262 responses.

Are satisfied overall	94.7%
The school staff cares	96.6%
Students know how to get help	95.4%
I know about my child's grades	96.2%
School is safe	98.9%
Students are happy	97.7%
Staff is encouraging	97.3%
Students who fall behind can get help	92.4%
School work is important	95.4%
Students feel welcomed	90.8%
School communicates effectively	96.2%
The staff is approachable	96.6%
They value culture and individual needs	95.8%

COMMON SENSE SCHOOL

Earning the Common Sense School badge is a symbol of our school's dedication and commitment to helping students think critically and use technology responsibly to learn, create, and participate.



PROGRAMS

Our campus offers unique programs to help our students become better learners, leaders, and friends. Some of ours include Spanish Immersion Program, PAW Pals, Gifted and Talented, WatchDogs, Language Science (MTA), Student Council, Athletes for Literacy, ESL, Special Education, and Extended School Day.



ARTS AND ATHLETICS



100%

Participation in athletics or physical education

99%

Participation in fine arts such as music and art

AWARDS AND RECOGNITIONS

- Common Sense Media Award for 2019-2021
- Best of Denton County: Best Public Elementary School 2014, 2015, 2016, 2018 and 2020
- Best of Denton County: Best Kindergarten 2016 and 2017
- Best of Denton County: Best Public School Teacher: 2017, 2018, and 2020
- Robotics Team placed 6th in Area 11 TCEA 2018
- District Teacher of the Year 2017-2018
- LEF Award: Technology and STEM
- Flower Mound Chamber of Commerce School of the Month 2018, 2019
- CREST Award for 2018, 2019, 2020

WELLINGTON ELEMENTARY SCHOOL

Home of the Wildcats
Flower Mound, Texas

Tami Braun, Principal

