

# Timber Creek Elementary School

## Campus Profile

**SCHOOL HOURS** 7:45 a.m. to 3 p.m. **GRADES** Pre-K through 5th grade  
**ONLINE** [lisd.net/timbercreek](http://lisd.net/timbercreek) | [facebook.com/timbercreekes](https://facebook.com/timbercreekes) | [twitter.com/TimbercreekES](https://twitter.com/TimbercreekES)

### STUDENT INFORMATION

**450** Students  
**97.3%** Average daily attendance

### STAFF INFORMATION

**51.88** Total staff members  
**12.8** Average number of years teaching experience  
**9.4** Average number of years teaching in LISD schools

### PROFESSIONAL LEARNING

Total number of hours the staff spent developing their job skills last year

**4,505**



Average professional learning hours per Lewisville ISD staff member



### OBSERVATION

**383**

Number of administrator visits to observe class instruction

**192** Average number of classroom visits per administrator

### At Timber Creek Elementary, we believe:

- Every child can be a leader
- A growth mindset is necessary to embrace learning as a lifestyle
- No child is too young to take their first action steps in visualizing and creating their future

As a Leader in Me School, we promote student leadership and celebrate the rich diversity of our community. We are committed to excellence in providing a safe, risk-free, engaging learning environment that teaches the whole child.

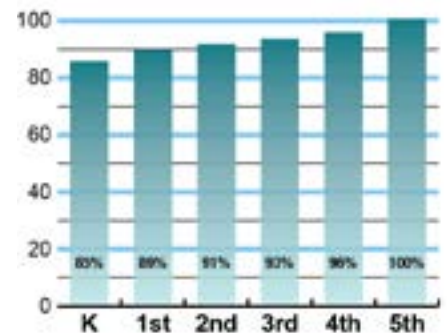
We recognize the importance of nurturing students' academic growth as well as supporting their social emotional health. We are devoted to helping every student discover and develop their individual strengths and talents. We encourage goal setting at an early age and celebrate progress along the way throughout each child's educational journey.

We cultivate a balance of tradition and innovation that ensures our learners are actively engaged in meaningful and relevant work that prepares them for success in the 21st century. At Timber Creek Elementary, we prepare ALL students to enjoy thriving, productive lives in a future *they* create.

### ACADEMIC PERFORMANCE

#### Istation by grade level

Lewisville ISD monitors students' reading progress through the Istation computer program. Teachers can quickly assess which students need help. This chart shows the percent of students reading on grade level or showing six months growth at the end of the school year.



## CLUBS

Students engage in learning of their choice beyond the classroom through clubs. Ours include Student Lighthouse Team, Student Council, Morning Mile, Safety Patrol, Tiger Choir, Watch Me Sculpt, Young Rembrandts, Drama Kids, Chess, Wise Computing, Basketball, Soccer, Dodgeball, Film Making and iPiano.



## What do our parents think?

In April 2021, parents were surveyed about the campus their child attends. Values represent the percentage of respondents who agree. Based on 105 responses.

Are satisfied overall	99.0%
The school staff cares	99.0%
Students know how to get help	99.0%
I know about my child's grades	98.1%
School is safe	100.0%
Students are happy	97.1%
Staff is encouraging	100.0%
Students who fall behind can get help	98.1%
School work is important	95.2%
Students feel welcomed	98.1%
School communicates effectively	98.1%
The staff is approachable	99.0%
They value culture and individual needs	97.1%

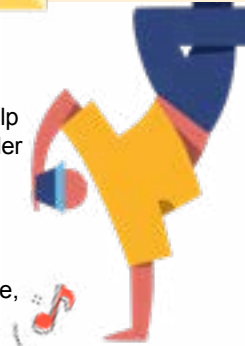
## COMMON SENSE SCHOOL

Earning the Common Sense School badge is a symbol of our school's dedication and commitment to helping students think critically and use technology responsibly to learn, create, and participate.



## PROGRAMS

Our campus offers unique programs to help our students grow. Ours include The Leader in Me, Aligning Academics, Empowering Instruction, Student Leadership Roles, Student Recognition Program, Watch D.O.G.S., Tiger News Network, College & Career Readiness Week, Adopt-An-Athlete, Family Fitness Night and Vision Night.



## ARTS AND ATHLETICS



**100%**  
Participation in athletics or physical education

**100%**  
Participation in fine arts such as music and art

## AWARDS AND RECOGNITIONS

- National PTA School of Excellence 2020-2022
- Leader in Me School
- ENERGY STAR certified school
- PTA Golden Apple Award
- PTA Head Start Award
- Healthy Zone School alumni
- Destination Imagination Team 3rd place at regional competition
- Former TCE students receive TAFE National Award for video on 7 Habits
- Fuel Up to Play 60 Recognition (FUTP60)

## TIMBER CREEK ELEMENTARY SCHOOL

Home of the Tigers  
Flower Mound, Texas

*Amy Middleton, Principal*

