

Rockbrook Elementary School

Campus Profile

SCHOOL HOURS ONLINE

7:45 a.m. to 3 p.m. **GRADES** Pre-K through 5th grade

lisd.net/rockbrook | facebook.com/rockbrookes | twitter.com/RockbrookES

STUDENT INFORMATION

655	Students
92.4%	Average daily attendance

STAFF INFORMATION

73.73	Total staff members
8.4	Average number of years teaching experience
3.8	Average number of years teaching in LISD schools

PROFESSIONAL LEARNING

Total number of hours the staff spent developing their job skills last year

4291



Average professional learning hours per Lewisville ISD staff member



OBSERVATION

Number of administrator visits to observe class instruction

185

46 Average number of classroom visits per administrator

At Rockbrook Elementary:

We succeed with no limits because we believe in our students and value learning.

Every Rockbrook Bear is uniquely capable and deserves to be challenged each day. We provide every student the opportunity to be educated in a way that prepares them for college, careers and life. We believe that meaningful and positive relationships are the foundation of student success.

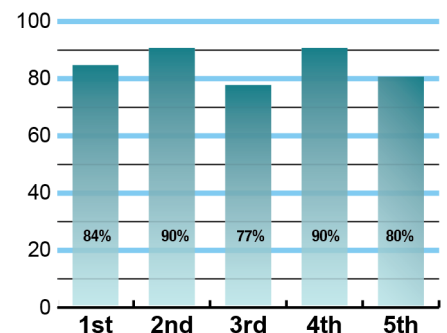
Our students engage in quality instruction that fosters high expectations and honors diversity. We believe in our students' ability to be bold leaders and face challenges with determination and resilience. We are passionate about our students' success and welfare. We work with the families and community to increase connectedness and collaboration for the betterment of our students.



ACADEMIC PERFORMANCE

Istation by grade level

Lewisville ISD monitors students' reading progress through the Istation computer program. Teachers can quickly assess which students need help. This chart shows the percent of students reading on grade level or showing six months growth at the end of the school year.



CLUBS

Clubs provide opportunities for students to engage in learning of their choice beyond the classroom.

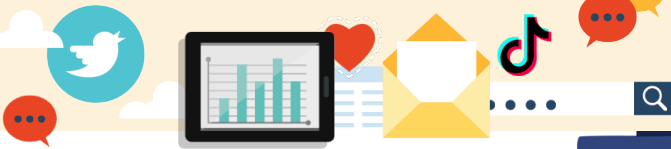
Some of our clubs include After school IMPACT Club.



DIGITAL CITIZENSHIP



Earning the Common Sense School badge is a symbol of our school's dedication and commitment to helping students think critically and use technology responsibly to learn, create, and participate.

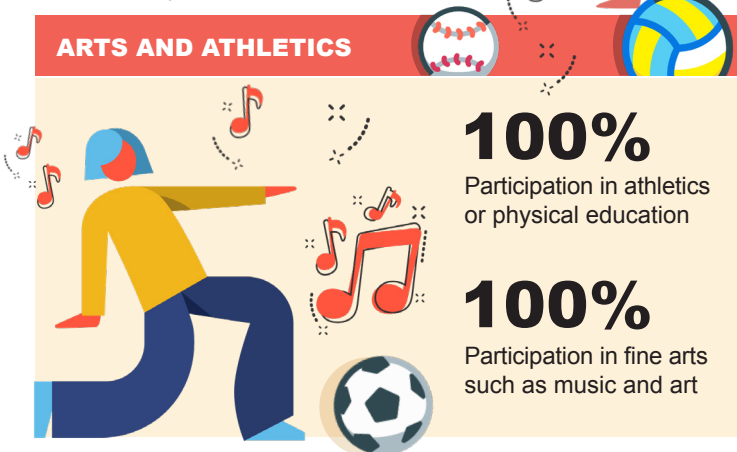


PROGRAMS

Our campus offers unique programs to help our students become better learners, leaders, and friends. Ours include partnerships with Vista Ridge United Methodist Church, Denton County Links, Concerned Citizens and African American Parents. We offer Extended School Day, too.



ARTS AND ATHLETICS



AWARDS AND RECOGNITIONS

- Common Sense Media School
- CREST Counseling Award

What do our parents think?

In April 2023, parents were surveyed about the campus their child attends. Values represent the percentage of respondents who agree. Based on 51 responses.

Are satisfied overall	91.8%
I can reach out to staff to discuss my concerns	91.8%
My child feels they can go to staff for help	83.3%
My child feels that school work is important	93.9%
My child feels safe at school	91.8%
Most of the time, my child is happy at school	87.8%
School staff values my child's culture and needs	87.8%
My child's mental health and wellness are supported	89.8%
I am informed about my child's progress and grades	87.5%
Parents feel welcomed at school and are involved	93.9%
Teachers do well to help students who fall behind	85.7%
School staff communicates well with families	91.8%
School staff cares about my child	87.8%
School staff encourages my child to do their best	92.0%
I am satisfied with the school's health protocols	100.0%
I am satisfied with the school's safety protocols	100.0%

ROCKBROOK ELEMENTARY SCHOOL

Home of the Bears
Lewisville, Texas

Patrick Guy, Principal

