

# Lamar Middle School

## Campus Profile

### SCHOOL HOURS ONLINE

8:55 a.m. to 4:10 p.m. **GRADES** 6th through 8th grade  
[lisd.net/lamar](http://lisd.net/lamar) | [facebook.com/lamarmiddleschool](https://facebook.com/lamarmiddleschool) | [twitter.com/LamarMS](https://twitter.com/LamarMS)

### STUDENT INFORMATION

**723** Students  
**98.9%** Average daily attendance

### STAFF INFORMATION

**65.95** Total staff members  
**13.4** Average number of years teaching experience  
**10.2** Average number of years teaching in LISD schools

### PROFESSIONAL LEARNING

Total number of hours the staff spent developing their job skills last year

**3862**

**49.5**

Average professional learning hours per Lewisville ISD staff member



### OBSERVATION

Number of administrator visits to observe class instruction

**448**

**149** Average number of classroom visits per administrator

### Our commitment to students:

At Lamar Middle School, our focus is on educating students to become independent learners in a safe and nurturing environment. We challenge students to embrace a growth mindset by providing an appropriate rigor in our course work.

Our extra-curricular programs provide students with opportunities to be successful and learn the values of hard work, sportsmanship and teamwork. Our clubs and organizations provide students many opportunities to find a group they can belong to and find value in.

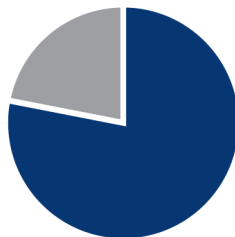
We are committed to providing our students opportunities to engage in real-world learning through field trips, hands-on experiences and through bringing community members into our school to provide rigorous and relevant learning experiences.

At Lamar Middle School, we are preparing leaders, shaping the future and impacting the world.

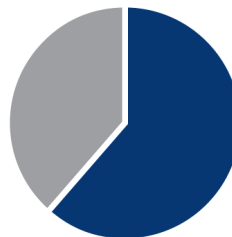
### ACADEMIC PERFORMANCE

#### PSAT SCORES AND ADVANCED COURSES

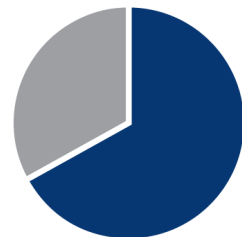
Percent of students whose PSAT test scores indicate they are college and career ready. Percent of student population who are enrolled in at least one advanced course.



PSAT Reading **78.3%**



PSAT Math **61.5%**



Pre AP/AP enrolled **67%**

## CLUBS

Clubs provide opportunities for students to engage in learning of their choice beyond the classroom.

Some of our clubs include Student Council, Chess Club, Circle of Friends, and FCA.



## What do our parents think?

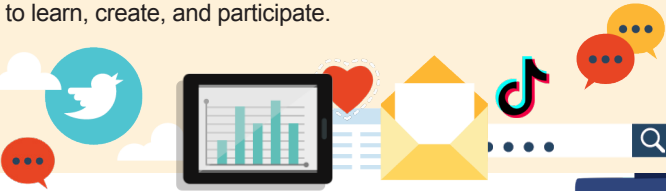
In April 2022, parents were surveyed about the campus their child attends. Values represent the percentage of respondents who agree. Based on 182 responses.

Are satisfied overall	96.0%
I can reach out to staff to discuss my concerns	94.0%
My child feels they can go to staff for help	92.0%
My child feels that school work is important	88.0%
My child feels safe at school	95.0%
Most of the time, my child is happy at school	93.0%
School staff values my child's culture and needs	93.0%
I am informed about my child's progress and grades	93.0%
Parents feel welcomed at school and are involved	98.0%
Teachers do well to help students who fall behind	89.0%
School staff communicates well with families	93.0%
School staff cares about my child	96.0%
School staff encourages my child to do their best	97.0%

## DIGITAL CITIZENSHIP



**Renewed for next year.** Earning the Common Sense School badge is a symbol of our school's dedication and commitment to helping students think critically and use technology responsibly to learn, create, and participate.



## PROGRAMS

Our campus offers unique programs to help our students become better learners, leaders, and friends.

Some of our programs include AVID, No Place for Hate, and LMS Mentor Program.



## ARTS AND ATHLETICS



**100%**

Participation in athletics or physical education

**86%**

Participation in fine arts such as music and art

## AWARDS AND RECOGNITIONS

- UIL One-Act Play Zone Champion
- No Place for Hate Campus
- CREST Award for Counseling Excellence
- Superior Ratings at Fine Arts contests

## LAMAR MIDDLE SCHOOL

Home of the Longhorns  
Flower Mound, Texas

*Kristy Casal, Principal*

