

# Lakeland Elementary School

## Campus Profile

**SCHOOL HOURS** 7:45 a.m. to 3 p.m. **GRADES** Kindergarten through 5th grade  
**ONLINE** [lisd.net/lakeland](http://lisd.net/lakeland) | [facebook.com/lakelandes](https://facebook.com/lakelandes) | [twitter.com/LakelandES](https://twitter.com/LakelandES)

### STUDENT INFORMATION

**712** Students  
**97.0%** Average daily attendance

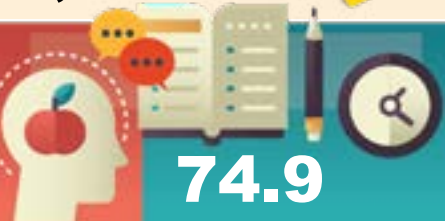
### STAFF INFORMATION

**82.49** Total staff members  
**11.0** Average number of years teaching experience  
**7** Average number of years teaching in LISD schools

### PROFESSIONAL LEARNING

Total number of hours the staff spent developing their job skills last year

**7,120**



Average professional learning hours per Lewisville ISD staff member



### OBSERVATION

**350**

Number of administrator visits to observe class instruction

**117** Average number of classroom visits per administrator

### At Lakeland Elementary, we believe:

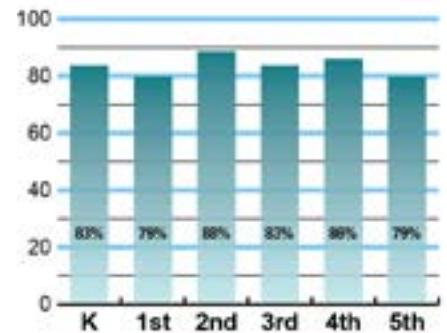
- Every child is unique and has the ability to learn and reach their goals
- Students are challenged daily in a supportive, encouraging and engaging learning environment
- Staff is committed to ensure each child has a positive school experience
- By working hard, we will make a difference

We are committed to providing a nurturing and safe learning environment that allows every student to thrive and grow to their maximum potential. All students at Lakeland Elementary are provided with the opportunity to engage in meaningful, real-world learning experiences that are tailored to meet their needs. By providing diverse-learning experiences, our students are able to collaborate, challenge and learn from one another. Students from Lakeland Elementary are prepared to contribute and succeed as responsible leaders in a global community.

### ACADEMIC PERFORMANCE

#### Istation by grade level

Lewisville ISD monitors students' reading progress through the Istation computer program. Teachers can quickly assess which students need help. This chart shows the percent of students reading on grade level or showing six months growth at the end of the school year.



## CLUBS

Clubs provide opportunities for students to engage in learning of their choice beyond the classroom.

Some of our Clubs include Choir, Student Council, Play 360 Athletic and Book Club.



## What do our parents think?

In April 2021, parents were surveyed about the campus their child attends. Values represent the percentage of respondents who agree. Based on 87 responses.

Are satisfied overall	90.8%
The school staff cares	96.6%
Students know how to get help	95.4%
I know about my child's grades	98.9%
School is safe	94.3%
Students are happy	95.4%
Staff is encouraging	98.9%
Students who fall behind can get help	95.4%
School work is important	95.4%
Students feel welcomed	95.4%
School communicates effectively	96.6%
The staff is approachable	96.6%
They value culture and individual needs	97.7%

## COMMON SENSE SCHOOL



Earning the Common Sense School badge is a symbol of our school's dedication and commitment to helping students think critically and use technology responsibly to learn, create, and participate.



## PROGRAMS

Our programs include Communities in Schools, Dual Language, English as a Second Language Program, Breakfast in the Classroom Program, and Gifted and Talented Program. We also offer 21st Century Ace Student After School Program, Lunch with Leaders, Adult Mentoring, and High School Mentors.



## ARTS AND ATHLETICS



**99%**  
Participation in athletics or physical education

**98%**  
Participation in fine arts such as music and art

## AWARDS AND RECOGNITIONS

- 2020-2021 Lewisville Chamber of Commerce School, Staff and Student Recognition
- 2020-2021 CREST Counselors Award
- 2019-2020 Red Ribbon LISD Recognition
- 2019-2020 Parent University Recognition

## LAKELAND ELEMENTARY SCHOOL

Home of the Roadrunners  
Lewisville, Texas

*Vanessa Asbun, Principal*

