

# Flower Mound Elementary School

## Campus Profile

**SCHOOL HOURS** 7:45 a.m. to 3 p.m. **GRADES** Kindergarten through 5th grade  
**ONLINE** [lisd.net/flowermound](http://lisd.net/flowermound) | [facebook.com/flowermoundes](https://facebook.com/flowermoundes) | [twitter.com/FlowerMoundES](https://twitter.com/FlowerMoundES)

### STUDENT INFORMATION

**454** Students  
**96.8%** Average daily attendance

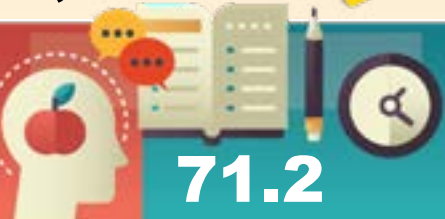
### STAFF INFORMATION

**55.91** Total staff members  
**13.9** Average number of years teaching experience  
**11** Average number of years teaching in LISD schools

### PROFESSIONAL LEARNING

Total number of hours the staff spent developing their job skills last year

**4,484**



Average professional learning hours per Lewisville ISD staff member



### OBSERVATION

Number of administrator visits to observe class instruction

**177**

**59** Average number of classroom visits per administrator

### At Flower Mound Elementary we believe:

Partnerships with our students, family, and community strengthen individual achievements and successes for each student; children are our purpose and our passion. All students receive an extended curriculum to observe our world, question ideas, and apply knowledge in an atmosphere of excellence through a STEAM emphasis. Engagement involving the use of technology, differentiation, genius hour, math challenge and after school clubs to help meet the individual academic and social needs of all students.

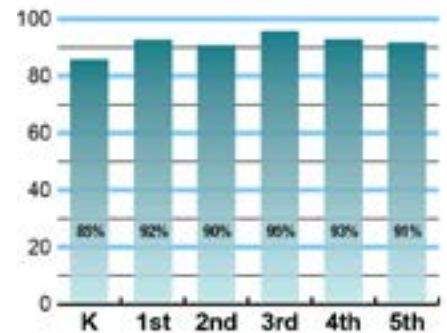
We strive to develop successful students through innovative and diverse learning experiences and promote strong character and citizenship through our School of Character curriculum. At Flower Mound Elementary, we believe in making a difference!



### ACADEMIC PERFORMANCE

#### Istation by grade level

Lewisville ISD monitors students' reading progress through the Istation computer program. Teachers can quickly assess which students need help. This chart shows the percent of students reading on grade level or showing six months growth at the end of the school year.



## CLUBS

Students engage in learning of their choice beyond the classroom through clubs. Ours include Student Council, Art Club, Falcon Singers Choir, Chess Club, Falcon Nation, Destination Imagination, Percussion, Green Team, Maker Monday, Running Club, Coder Club and iPiano.



## What do our parents think?

In April 2021, parents were surveyed about the campus their child attends. Values represent the percentage of respondents who agree. Based on 112 responses.

Are satisfied overall	95.5%
The school staff cares	97.3%
Students know how to get help	96.4%
I know about my child's grades	96.4%
School is safe	99.1%
Students are happy	94.6%
Staff is encouraging	96.4%
Students who fall behind can get help	94.6%
School work is important	91.1%
Students feel welcomed	93.8%
School communicates effectively	95.5%
The staff is approachable	95.5%
They value culture and individual needs	95.5%

## COMMON SENSE SCHOOL

Earning the Common Sense School badge is a symbol of our school's dedication and commitment to helping students think critically and use technology responsibly to learn, create, and participate.



## PROGRAMS

Our campus offers unique programs to help our students grow. Some of ours include STEM Team - 4th and 5th Grade girls STEM Leadership, Rachel's Challenge, Circle of Friends, School of Character, Ready Bodies/Learning Minds, LLI Reading Intervention, and Fuel Up to Play 60.



## ARTS AND ATHLETICS



**99%**  
Participation in athletics or physical education

**99%**  
Participation in fine arts such as music and art

## AWARDS AND RECOGNITIONS

- 2019 National PTA School of Excellence
- 2018 Texas School of Character
- Second place at Sandy Lake Music Festival
- 2018 National School of Character
- LEF Grants provided white board tables for classrooms and library books for the Boys Reading Club
- ENERGY STAR certified school
- 2015 Texas Counselor of the Year

## FLOWER MOUND ELEMENTARY SCHOOL

Home of the Falcons  
Flower Mound, Texas

*Christine Van Scoyoc, Principal*

