

Ethridge Elementary School

Campus Profile

SCHOOL HOURS 7:45 a.m. to 3 p.m. **GRADES** Kindergarten through 5th grade
ONLINE lisd.net/ethridge | facebook.com/EthridgeES | twitter.com/EthridgeES

STUDENT INFORMATION

404 Students
96.2% Average daily attendance

STAFF INFORMATION

42.35 Total staff members
12.8 Average number of years teaching experience
9.3 Average number of years teaching in LISD schools

PROFESSIONAL LEARNING

Total number of hours the staff spent developing their job skills last year

3,204



Average professional learning hours per Lewisville ISD staff member



OBSERVATION

127

Number of administrator visits to observe class instruction

64 Average number of classroom visits per administrator

At Ethridge Elementary, we believe:

Excellence is the expectation. Teachers, parents, and our community work together in developing students who are creative thinkers, innovative problem solvers, and future leaders with a love of learning and a strong sense of independence and purpose.

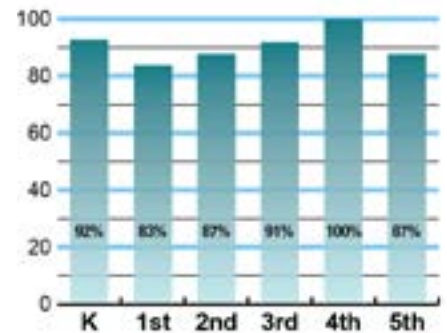
We believe:

- Every student is uniquely capable and deserves to be challenged each day
- Creative thinkers, problem solvers and future leaders are built by design and intentionality
- Independent, self-motivated learners have a strong sense of purpose and connectedness
- Fostering character development is vital to raising children who care about and for others
- A safe, nurturing, inclusive and flexible environment is key to growing our students intellectually, socially and emotionally
- An educated citizenry is essential for equal opportunity and a prosperous society
- Meaningful and relevant work, combined with powerful instruction, engages students in profound learning
- Critical thinking and problem solving today are necessary for students to be equipped for future challenges
- Education is the shared responsibility of the community

ACADEMIC PERFORMANCE

Istation by grade level

Lewisville ISD monitors students' reading progress through the Istation computer program. Teachers can quickly assess which students need help. This chart shows the percent of students reading on grade level or showing six months growth at the end of the school year.



CLUBS

Students engage in learning of their choice beyond the classroom through clubs. Ours include Running Club, Gardening Club, Listening Club, Art/Yarn Club, Book Club, EARTH Recycle Team, Eagle Patrol, Choir, Zoo Keepers, Drum Club, Student Council, Coding, Dance, Flag Corps, Chess, and Girls Who Code.



What do our parents think?

In April 2021, parents were surveyed about the campus their child attends. Values represent the percentage of respondents who agree. Based on 91 responses.

Are satisfied overall	96.7%
The school staff cares	95.6%
Students know how to get help	94.5%
I know about my child's grades	93.4%
School is safe	98.9%
Students are happy	95.6%
Staff is encouraging	97.8%
Students who fall behind can get help	94.5%
School work is important	87.9%
Students feel welcomed	94.5%
School communicates effectively	94.5%
The staff is approachable	96.7%
They value culture and individual needs	92.3%

COMMON SENSE SCHOOL



Earning the Common Sense School badge is a symbol of our school's dedication and commitment to helping students think critically and use technology responsibly to learn, create, and participate.



PROGRAMS

Our campus offers unique programs to help our students become better learners, leaders, and friends. Some of ours include Character Counts, Safe and Civil, ETHOS (Ethridge Tutors Helping Other Students), and ESP (Eagle Success Program with recognition assemblies and character trait recognition Eagle cards).



ARTS AND ATHLETICS



100%
Participation in athletics or physical education

100%
Participation in fine arts such as music and art

AWARDS AND RECOGNITIONS

- Senator Jane Nelson School Spirit Award
- 21-Day Healthy Snack Challenge District and County Champions
- Mile Under the Lights The Colony Champions
- Spelling Bee Area Champion
- Yearly teacher LEF Grant recipients
- Voted #1 elementary school by The Colony Courier-Leader

ETHRIDGE ELEMENTARY SCHOOL

Home of the Eagles
The Colony, Texas

Tasia Thompson, Principal

