

# Degan Elementary School

## Campus Profile

**SCHOOL HOURS** 7:45 a.m. to 3 p.m. **GRADES** Pre-K through 5th grade  
**ONLINE** [lisd.net/degan](http://lisd.net/degan) | [facebook.com/deganes](https://facebook.com/deganes) | [twitter.com/DeganElementary](https://twitter.com/DeganElementary)

### STUDENT INFORMATION

452 Students  
 95.4% Average daily attendance

### STAFF INFORMATION

60.15 Total staff members  
 14.2 Average number of years teaching experience  
 9.0 Average number of years teaching in LISD schools

### PROFESSIONAL LEARNING

Total number of hours the staff spent developing their job skills last year

3073

45.2

Average professional learning hours per Lewisville ISD staff member

192

### OBSERVATION

Number of administrator visits to observe class instruction

96 Average number of classroom visits per administrator

### At Degan Elementary we believe:

Relationships are a priority and we will design learning experiences for our students while continuing to consider their social-emotional needs.

- All students can learn and be proficient and advanced in core academic areas.
- Everyone who walks through our doors is valuable and is an important contributor to our learning environments.
- Partnering with our families and communities is critical to providing the best quality education for our students as we grow as a learning organization.

Degan students will become intrinsically motivated learners who are confident, respectful citizens valuing education, themselves, and others. The faculty and staff of Degan will collaborate to engage students in profound learning and empower them to become lifelong learners who make a positive impact in the community. We provide meaningful learning with relevant feedback to help our students know where they are and how they can consistently improve.

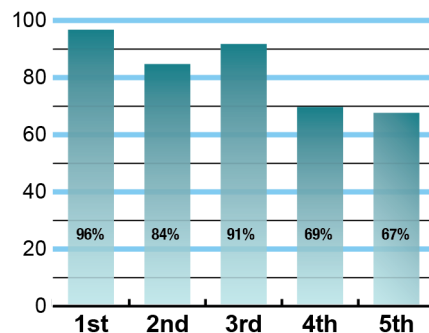
We want to ensure our students have the skills and mindset to face their future with confidence and take risks to add value to our community and the world.

Follow us at #WeAreDegan!

### ACADEMIC PERFORMANCE

#### Istation by grade level

Lewisville ISD monitors students' reading progress through the Istation computer program. Teachers can quickly assess which students need help. This chart shows the percent of students reading on grade level or showing six months growth at the end of the school year.



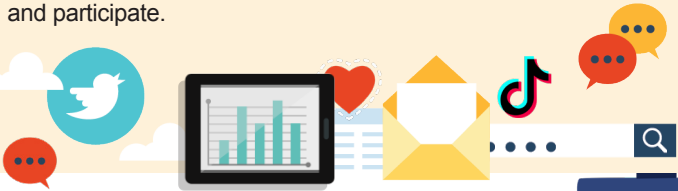
## CLUBS

Learning outside the classroom happens through our student interest clubs. Some of these include Student Council, Kindness, Choir, Walk About, Maker space, Sports, Art, Eagle News Network, Breakfast Club, Robotics, Breakout Club, and Sports and Games Club.



## DIGITAL CITIZENSHIP

Earning the Common Sense School badge is a symbol of our school's dedication and commitment to helping students think critically and use technology responsibly to learn, create, and participate.



## PROGRAMS

Our campus offers unique programs to help our students become better learners, leaders, and friends. Some of our programs include No Excuses University, Club Friday, and Eagle Shuffle. We offer Extended School Day, too.



## ARTS AND ATHLETICS



**100%**  
Participation in athletics or physical education

**100%**  
Participation in fine arts such as music and art

## What do our parents think?

In April 2023, parents were surveyed about the campus their child attends. Values represent the percentage of respondents who agree. Based on 61 responses.

Are satisfied overall	88.3%
I can reach out to staff to discuss my concerns	91.7%
My child feels they can go to staff for help	93.3%
My child feels that school work is important	93.3%
My child feels safe at school	95.0%
Most of the time, my child is happy at school	90.0%
School staff values my child's culture and needs	96.7%
My child's mental health and wellness are supported	93.3%
I am informed about my child's progress and grades	91.4%
Parents feel welcomed at school and are involved	94.9%
Teachers do well to help students who fall behind	95.0%
School staff communicates well with families	81.7%
School staff cares about my child	91.7%
School staff encourages my child to do their best	96.7%
I am satisfied with the school's health protocols	98.2%
I am satisfied with the school's safety protocols	98.3%

## AWARDS AND RECOGNITIONS

- Excellence in Professional Learning
- Lewisville Area Chamber of Commerce Educator of the Year, School of the Month, Teacher of the Month and Student of the Month
- National Model Professional Learning Campus
- Energy Star Award
- National Distinguished Principal Finalist (top five in Texas)
- Texas Principal's Institute Transforming Learning School
- No Excuses University Campus
- PTA Early Bird Award
- PTA Snappy Increase Award
- PTA Comeback Head Start Award
- PTA Shining Star Award

## DEGAN ELEMENTARY SCHOOL

Home of the Eagles  
Lewisville, Texas

*LaShundra Wilson, Principal*

