

Central Elementary School Campus Profile

SCHOOL HOURS 7:45 a.m. to 3 p.m. **GRADES** Pre-K through 5th grade
ONLINE lisd.net/central | facebook.com/centralelem | twitter.com/Central_ES

STUDENT INFORMATION

539 Students
97.1% Average daily attendance

STAFF INFORMATION

74.58 Total staff members
10.8 Average number of years teaching experience
6.5 Average number of years teaching in LISD schools

PROFESSIONAL LEARNING

Total number of hours the staff spent developing their job skills last year

6,949



Average professional learning hours per Lewisville ISD staff member



OBSERVATION

Number of administrator visits to observe class instruction

251

84 Average number of classroom visits per administrator

At Central Elementary, we believe:

- All students can learn
- Students should be provided with engaging, real-world learning experiences
- Students are continually challenged through risk-taking and varied opportunities
- Students are provided a learning environment that is safe and supportive in order to be successful

We are committed to challenge all students and support academic achievement in a safe environment, empowering students to become successful, lifelong learners and productive citizens. Our goal at Central Elementary is to provide rich learning experiences for all students so they are prepared to thrive in the 21st Century and beyond. Working hard, every day, is the Cowboy way!

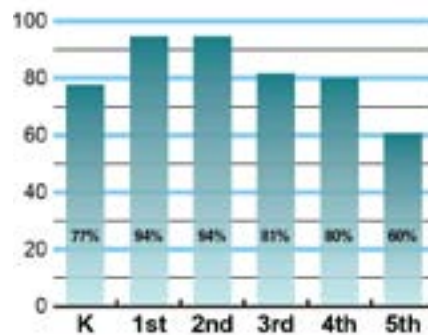
Central Pledge: Today, I will do more than I have to do. I will treat others as I want to be treated and I will become a better person.

Promesa de la Central: Hoy, haré todo lo que esté a mi alcance. Yo trataré a otros como quiero ser tratado y me convertiré en una mejor persona.

ACADEMIC PERFORMANCE

Istation by grade level

Lewisville ISD monitors students' reading progress through the Istation computer program. Teachers can quickly assess which students need help. This chart shows the percent of students reading on grade level or showing six months growth at the end of the school year.



CLUBS

Clubs provide opportunities for students to engage in learning of their choice beyond the classroom.

Some of our clubs include Art Club, Early Act, Sports Club, Science Club, Robotics, Computer Science, Music, Choir, Dance, and Soccer Club.



What do our parents think?

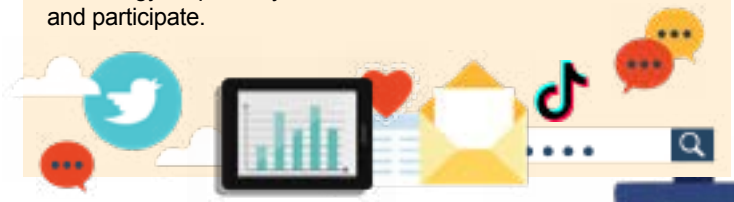
In April 2021, parents were surveyed about the campus their child attends. Values represent the percentage of respondents who agree. Based on 165 responses.

Are satisfied overall	98.8%
The school staff cares	98.2%
Students know how to get help	99.4%
I know about my child's grades	99.4%
School is safe	98.2%
Students are happy	97.6%
Staff is encouraging	99.4%
Students who fall behind can get help	96.4%
School work is important	98.2%
Students feel welcomed	97.6%
School communicates effectively	97.0%
The staff is approachable	97.0%
They value culture and individual needs	97.6%

COMMON SENSE SCHOOL



Earning the Common Sense School badge is a symbol of our school's dedication and commitment to helping students think critically and use technology responsibly to learn, create, and participate.



PROGRAMS

Our campus offers unique programs to help our students grow. Some of those include Dual Language, English as a Second Language, ACE, and Central Mobile Library, Communities in Schools, Kindness Ambassadors. Central House System encourages leadership, community and character traits.



ARTS AND ATHLETICS



99%
Participation in athletics or physical education

99%
Participation in fine arts such as music and art

AWARDS AND RECOGNITIONS

- Lewisville Chamber of Commerce School of the Month
- LISD Counselor of the Year Finalist
- Featured in LISD website highlight stories

CENTRAL ELEMENTARY SCHOOL

Home of the Cowboys
Lewisville, Texas

Lea Devers, Principal

