

# Bluebonnet Elementary School

## Campus Profile

### SCHOOL HOURS ONLINE

7:45 a.m. to 3 p.m. **GRADES** Kindergarten through 5th grade  
lisd.net/bluebonnet | facebook.com/bluebonnetes | twitter.com/BluebonnetES

### STUDENT INFORMATION

**632** Students  
**98.5%** Average daily attendance

### STAFF INFORMATION

**51.8** Total staff members  
**14.2** Average number of years teaching experience  
**10.6** Average number of years teaching in LISD schools

### PROFESSIONAL LEARNING

Total number of hours the staff spent developing their job skills last year

**3002**

**55.6**

Average professional learning hours per Lewisville ISD staff member



### OBSERVATION

Number of administrator visits to observe class instruction

**308**

**154** Average number of classroom visits per administrator

### At Bluebonnet Elementary, we believe:

- Students have the opportunity to excel to their highest potential
- Students are given opportunities to be risk-takers and creative thinkers
- Students will embrace real-life experiences on their journey to becoming lifelong learners

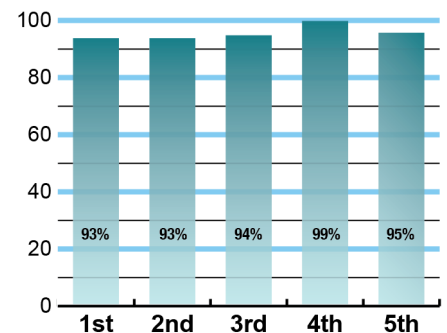
We are devoted to providing every student with the academic and social skills to be successful throughout their life. Our partnership with our families, staff and community is vital to the academic and social success of our students.



### ACADEMIC PERFORMANCE

#### Istation by grade level

Lewisville ISD monitors students' reading progress through the Istation computer program. Teachers can quickly assess which students need help. This chart shows the percent of students reading on grade level or showing six months growth at the end of the school year.



## CLUBS

Students engage in learning of their choice beyond the classroom through clubs.

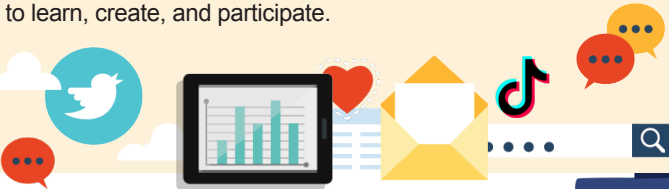
Some of our clubs include Bear Patrol, KPAW, Running Club, and Show Choir.



## DIGITAL CITIZENSHIP



**Renewed for next year.** Earning the Common Sense School badge is a symbol of our school's dedication and commitment to helping students think critically and use technology responsibly to learn, create, and participate.



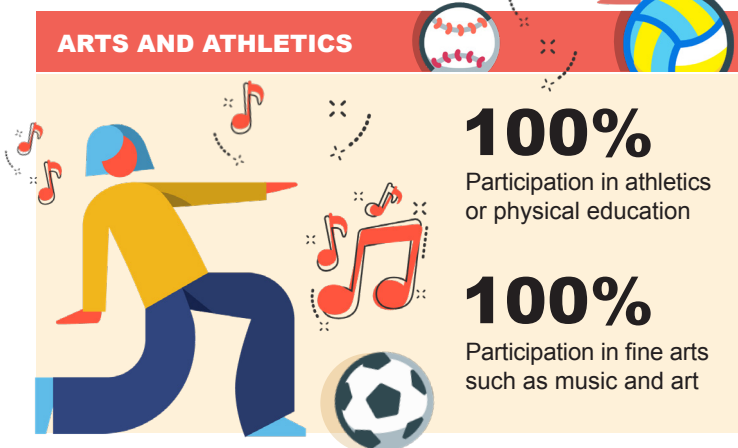
## PROGRAMS

Our campus offers unique programs to help our students become better learners, leaders, and friends.

Some of our programs include Kid with Character and Restorative Practices. We offer Extended School Day, too.



## ARTS AND ATHLETICS



## What do our parents think?

In April 2023, parents were surveyed about the campus their child attends. Values represent the percentage of respondents who agree. Based on 171 responses.

Are satisfied overall	97.0%
I can reach out to staff to discuss my concerns	95.9%
My child feels they can go to staff for help	97.6%
My child feels that school work is important	94.5%
My child feels safe at school	99.4%
Most of the time, my child is happy at school	95.8%
School staff values my child's culture and needs	95.8%
My child's mental health and wellness are supported	96.4%
I am informed about my child's progress and grades	95.8%
Parents feel welcomed at school and are involved	98.2%
Teachers do well to help students who fall behind	92.8%
School staff communicates well with families	98.2%
School staff cares about my child	97.6%
School staff encourages my child to do their best	98.8%
I am satisfied with the school's health protocols	98.2%
I am satisfied with the school's safety protocols	97.6%

## AWARDS AND RECOGNITIONS

- Town of Flower Mound Chamber of Commerce School of the Month May 2021
- PTA Golden Apple Award
- National PTA School of Excellence
- Common Sense Certified School

## BLUEBONNET ELEMENTARY SCHOOL

Home of the Bears  
Flower Mound, Texas

*Lana D. Fisher, Principal*

