

Prairie Trail Elementary School

Campus Profile

SCHOOL HOURS 7:45 a.m. to 3 p.m. **GRADES** Kindergarten through 5th grade
ONLINE lisd.net/prairietrail | facebook.com/prairietrailes | twitter.com/PrairieTrailIES

STUDENT INFORMATION

633 Students
97.3% Average daily attendance

STAFF INFORMATION

66.73 Total staff members
12.5 Average number of years teaching experience
9.6 Average number of years teaching in LISD schools

PROFESSIONAL LEARNING

Total number of hours the staff spent developing their job skills last year

4,535

66.7

Average professional learning hours per Lewisville ISD staff member



OBSERVATION

127

Number of administrator visits to observe class instruction

64 Average number of classroom visits per administrator

At Prairie Trail Elementary School, we will:

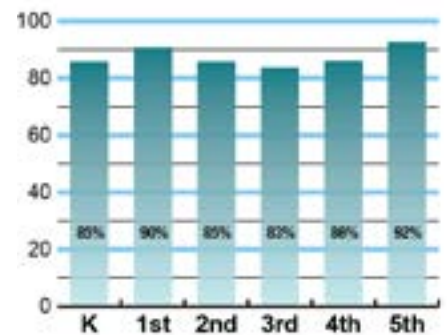
- Find the value in every child
- Allow for creative, joyful noise
- Be collaborative and willing to share ideas with all stakeholders
- Be innovative and have a growth mindset

We feel that elementary school is a time for exploration. Take a moment to imagine the elementary world: letters, numbers, stories, sharing, experimenting, games, collaborating, reading, problem solving, thinking, puzzles, role-play, reflecting, and the list goes on. Imagination and creativity are everywhere. Learning is accomplished by doing, touching, and experiencing. Each age group is different and unique, yet every child is always growing socially, emotionally, physically, and intellectually. When home, school, and community work together as a team, we can develop the “whole” child. Only through this teamwork will, “All of our students enjoy thriving, productive lives in a future *they* create.”

ACADEMIC PERFORMANCE

Istation by grade level

Lewisville ISD monitors students’ reading progress through the Istation computer program. Teachers can quickly assess which students need help. This chart shows the percent of students reading on grade level or showing six months growth at the end of the school year.



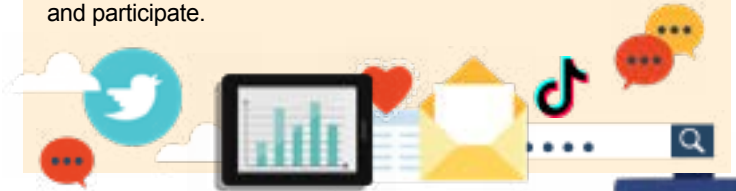
CLUBS

Clubs provide opportunities for students to engage in learning of their choice beyond the classroom.

Some of our clubs include STEM, Chorale and Pulse (Choir and Mallets), Safety Patrol, Circle of Friends, Green Team, Book Clubs, Helping Hands and Hallway Greeters.

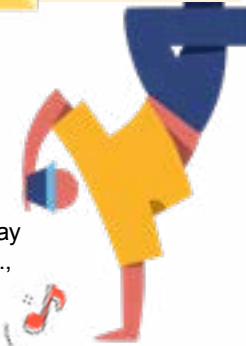
COMMON SENSE SCHOOL

Earning the Common Sense School badge is a symbol of our school's dedication and commitment to helping students think critically and use technology responsibly to learn, create, and participate.



PROGRAMS

Our campus offers unique programs to help our students grow. Ours include Spanish/English Dual Language (K-5), No Place for Hate, Good Morning Prairie Trail, What I Need Enrichment/Intervention During the Day (WIN), Gifted and Talented, Watch D.O.G.S., Author Visit, Thinkapalooza, 21-Day Health Challenge, and Veteran's Day Celebration.



ARTS AND ATHLETICS



100%
Participation in athletics or physical education

100%
Participation in fine arts such as music and art

AWARDS AND RECOGNITIONS

- Chamber of Commerce School and Teacher of the Month
- Spotlight Campus in the "No Place for Hate" Regional Guide
- Top Participant in district 21-Day Challenge, 3 years
- PTA Golden Apple Award for 100 percent staff membership
- PTA "Men Are Really Super" (MARS) Award
- ENERGY STAR certified school



What do our parents think?

In April 2021, parents were surveyed about the campus their child attends. Values represent the percentage of respondents who agree. Based on 178 responses.

Are satisfied overall	93.8%
The school staff cares	94.9%
Students know how to get help	92.1%
I know about my child's grades	88.2%
School is safe	96.1%
Students are happy	95.5%
Staff is encouraging	94.9%
Students who fall behind can get help	92.1%
School work is important	92.7%
Students feel welcomed	87.1%
School communicates effectively	91.0%
The staff is approachable	92.1%
They value culture and individual needs	93.3%

PRAIRIE TRAIL ELEMENTARY SCHOOL

Home of the Texans
Flower Mound, Texas

Wendi Vaughn, Principal

