

# Parkway Elementary School

## Campus Profile

**SCHOOL HOURS** 7:45 a.m. to 3 p.m. **GRADES** Kindergarten through 5th grade  
**ONLINE** [lisd.net/parkway](http://lisd.net/parkway) | [facebook.com/parkwayes](https://facebook.com/parkwayes) | [x.com/ParkwayES](https://x.com/ParkwayES)

### STUDENT INFORMATION

**604** Students  
**94.6%** Average daily attendance

### STAFF INFORMATION

**66.9** Total staff members  
**11.5** Average number of years teaching experience  
**7.5** Average number of years teaching in LISD schools

### PROFESSIONAL LEARNING

Total number of hours the staff spent developing their job skills last year

**4340**

**53.6**

Average professional learning hours per Lewisville ISD staff member



### OBSERVATION

Number of administrator visits to observe class instruction

**276**

**92** Average number of classroom visits per administrator

### Vision

All students are confident, equipped with the knowledge and skills to thrive and adapt for their future.

### Mission

Engaging and inspiring learners and leaders.

### Beliefs

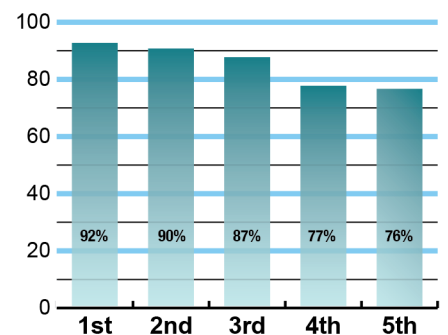
- Students' needs are the center of our learning community.
- Education is the shared responsibility of students, staff, and community.
- High quality staff are the heart of a culture of learning.
- A safe and nurturing environment is essential for a sense of well-being.
- Continuous improvement informs and inspires future growth.
- Students are more than a test score.



### ACADEMIC PERFORMANCE

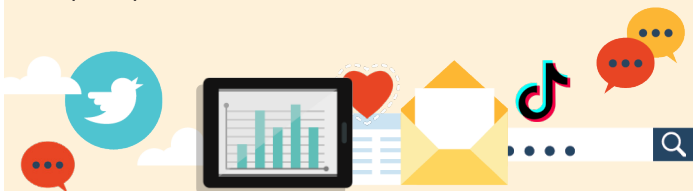
#### Istation by grade level

Lewisville ISD monitors students' reading progress through the Istation computer program. Teachers can quickly assess which students need help. This chart shows the percent of students reading on grade level or showing six months growth at the end of the school year.



## DIGITAL CITIZENSHIP

Earning the Common Sense School badge is a symbol of our school's dedication and commitment to helping students think critically and use technology responsibly to learn, create, and participate.



## PROGRAMS

Our programs include Dance, Robotics, Family Literacy Night, Family Math and Science Night, Multicultural Night, Panther Time, Multi-tier System of Support, Restorative Practices, Kindness Week, Red Ribbon Week, and Panther Choir. We offer Extended School Day, too.



## ARTS AND ATHLETICS



**100%**

Participation in athletics or physical education

**100%**

Participation in fine arts such as music and art

## AWARDS AND RECOGNITIONS

- Positive Panther Award
- Pawsome Awards
- Panther Buck Incentive program
- "Simply the Best" Award for Lewisville from Star Local Media
- Student 9-week Awards
- Teacher Spotlight Award
- Monthly Reading Goal Awards
- Perfect Attendance Awards
- Reader of the Month Awards
- GR 5 Thinking Caps Quiz Bowl Team, 2nd Place State of Texas, 5th Place Regional
- National PTA School of Excellence 2018-2020
- Principal's Honor Roll and Honor Roll

## Survey said...



### What our parents think

In April 2024, parents were surveyed about the campus their child attends. Values represent the percentage of respondents who agreed with each statement. Based on 113 responses.

Are satisfied overall	95%
Most of the time, my child is happy at school	95%
My child's health and wellness are supported	95%
Parents feel welcomed at school and are involved	100%
School staff communicates well with families	90%
Teachers do whatever it takes to help my child meet academic standards	92%

### What our students think

In April 2024, we asked 4th and 5th grade students about adults they could confide in at our school. Values represent the percentage of students who agreed with the following.

There is a staff member at my school with whom I feel comfortable talking	87%
---	-----



## PARKWAY ELEMENTARY SCHOOL

Home of the Panthers  
Lewisville, Texas

*Jill Asher, Principal*

