

Morningside Elementary School

Campus Profile

SCHOOL HOURS 7:45 a.m. to 3 p.m. **GRADES** Kindergarten through 5th grade
ONLINE lisd.net/morningside | facebook.com/morningsidees | twitter.com/MorningsideES

STUDENT INFORMATION

342 Students
96.5% Average daily attendance

STAFF INFORMATION

45.46 Total staff members
16.1 Average number of years teaching experience
11.6 Average number of years teaching in LISD schools

PROFESSIONAL LEARNING

Total number of hours the staff spent developing their job skills last year

3,794

75.9

Average professional learning hours per Lewisville ISD staff member



OBSERVATION

190

Number of administrator visits to observe class instruction

95 Average number of classroom visits per administrator

At Morningside Elementary, we believe:

- All students can be successful both academically, socially and emotionally
- Students are given opportunities to be risk-takers, creative thinkers, and innovative learners
- Students are encouraged to persevere to their highest potential and become life-long learners
- We are committed to creating a safe educational environment where students are able to reach their full potential academically, socially, physically and morally

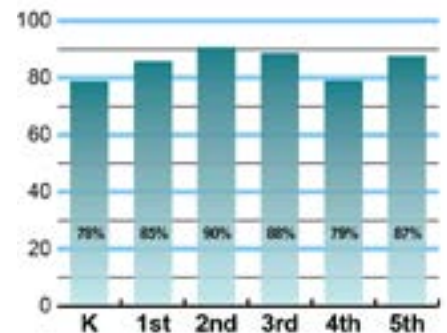
We are committed to maintaining high standards of excellence and dedicating our efforts so our students can obtain life-long skills and positive attitudes, which will empower them to be successful, life-long learners and respectful, responsible and productive citizens.



ACADEMIC PERFORMANCE

Istation by grade level

Lewisville ISD monitors students' reading progress through the Istation computer program. Teachers can quickly assess which students need help. This chart shows the percent of students reading on grade level or showing six months growth at the end of the school year.



CLUBS

Students engage in learning of their choice beyond the classroom through clubs. Ours include S.M.A.R.T. Girls, Makers Club, Choir, Guitar Club, Instrument Club, Morningside Musicals, Library Helper's Club, Library Genius Hour, Student Council, Mileage Club, Safety Patrol, and Morning Announcement Club.



What do our parents think?

In April 2021, parents were surveyed about the campus their child attends. Values represent the percentage of respondents who agree. Based on 68 responses.

Are satisfied overall	92.6%
The school staff cares	97.1%
Students know how to get help	95.6%
I know about my child's grades	95.6%
School is safe	97.1%
Students are happy	94.1%
Staff is encouraging	95.6%
Students who fall behind can get help	91.2%
School work is important	89.7%
Students feel welcomed	95.6%
School communicates effectively	95.6%
The staff is approachable	94.1%
They value culture and individual needs	97.1%

COMMON SENSE SCHOOL

Earning the Common Sense School badge is a symbol of our school's dedication and commitment to helping students think critically and use technology responsibly to learn, create, and participate.



PROGRAMS

Our campus offers unique programs to help our students become better learners, leaders, and friends.

Some of our programs include Restorative Practices, and Safe and Civil Schools.



ARTS AND ATHLETICS



99%
Participation in athletics or physical education

100%
Participation in fine arts such as music and art

AWARDS AND RECOGNITIONS

- American Heart Association Heart Hero Awards for 6 staff members
- Received CPR Hands-Only kits for campus and district use from Reliant Energy and The American Heart Association
- 21-Day Challenge Award
- CREST Counselor's Award
- Fuel Up to Play 60 Award

MORNINGSIDE ELEMENTARY SCHOOL

Home of the Mustangs
The Colony, Texas

Rita Bacque, Principal

