

McAuliffe Elementary School

Campus Profile

SCHOOL HOURS 7:45 a.m. to 3 p.m. **GRADES** Pre-K through 5th grade
ONLINE lisd.net/mcauliffe | facebook.com/mcauliffeelementary | twitter.com/McAHighlander

STUDENT INFORMATION

532 Students
96.7% Average daily attendance

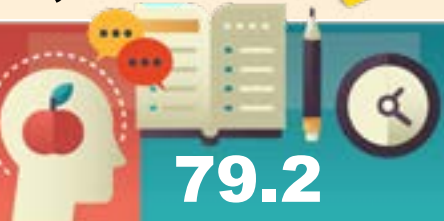
STAFF INFORMATION

51.22 Total staff members
12.9 Average number of years teaching experience
9.7 Average number of years teaching in LISD schools

PROFESSIONAL LEARNING

Total number of hours the staff spent developing their job skills last year

4,595



Average professional learning hours per Lewisville ISD staff member



OBSERVATION

Number of administrator visits to observe class instruction

314

157 Average number of classroom visits per administrator

At McAuliffe Elementary, we believe:

- A safe and inclusive learning environment is paramount to student success
- Partnerships with families and community members foster authentic learning through real-world application
- Learning can, and should, be exciting
- 21st-century skills encourage students to be the problem-solving leaders of tomorrow

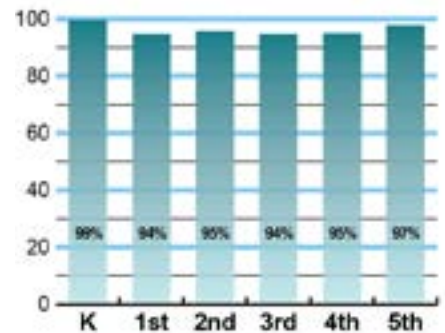
The McAuliffe staff strives to meet academic, emotional, social, and physical growth of all students. We strive to educate the whole child by employing high academic standards through design thinking and the integration of 21st-century skills, along with regular character education lessons and Genius Hour every Friday. Genius Hour provides learners the opportunity to pursue passions and personal interests, become problem solvers, and see their place in the community and world.

By establishing partnerships with family and community members through school events, speakers, volunteers, and activities, McAuliffe learners gain authentic-learning experiences spanning each aspect of their lives. The McAuliffe staff anticipates that our family made up of teachers, children, parents, grandparents, guardians, volunteers, and community grow together in a safe, inclusive environment every day.

ACADEMIC PERFORMANCE

Istation by grade level

Lewisville ISD monitors students' reading progress through the Istation computer program. Teachers can quickly assess which students need help. This chart shows the percent of students reading on grade level or showing six months growth at the end of the school year.



CLUBS

Students engage in learning of their choice beyond the classroom through clubs. Ours include M&M (Choir), Safety Patrol, American Girl Doll, Sewing, Knitting, Basketball, Kickball, Big Sis/Little Sis, Pokeman, Crafting, Drawing, Crafting Art, Kindness, Dances from Around the World, Legos, Student Council, Circle of Friends, Hair Styling, Gardening, Recycling and Slime.



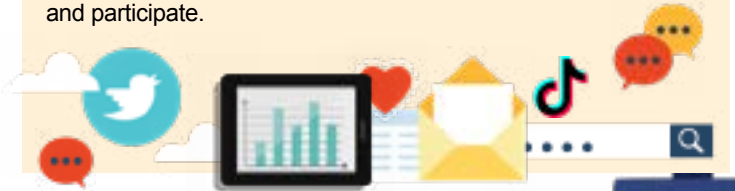
What do our parents think?

In April 2021, parents were surveyed about the campus their child attends. Values represent the percentage of respondents who agree. Based on 155 responses.

Are satisfied overall	95.5%
The school staff cares	98.1%
Students know how to get help	97.4%
I know about my child's grades	95.5%
School is safe	98.1%
Students are happy	98.1%
Staff is encouraging	98.1%
Students who fall behind can get help	91.6%
School work is important	94.8%
Students feel welcomed	92.3%
School communicates effectively	93.5%
The staff is approachable	96.8%
They value culture and individual needs	92.9%

COMMON SENSE SCHOOL

Earning the Common Sense School badge is a symbol of our school's dedication and commitment to helping students think critically and use technology responsibly to learn, create, and participate.



PROGRAMS

Our campus offers unique programs to help our students become better learners, leaders, and friends. Some of ours include Genius Hour, GE, Little Bit of Broadway, Watch Me Sculpt, SSA Sports, Robotics, Filmmaking, Tennis and Destination Imagination.



ARTS AND ATHLETICS



99%

Participation in athletics or physical education

99%

Participation in fine arts such as music and art

AWARDS AND RECOGNITIONS

- American Heart Association Heart Hero Awards for 6 staff members
- Received CPR Hands-Only kits for campus and district use from Reliant Energy and The American Heart Association
- 21-Day Challenge Award
- CREST Counselor's Award
- Fuel Up to Play 60 Award

McAULIFFE ELEMENTARY SCHOOL

Home of the Highlanders
Highland Village, Texas

Jennifer Mattingly, Principal

