

Indian Creek Elementary School

Campus Profile

SCHOOL HOURS 7:45 a.m. to 3 p.m. **GRADES** Pre-K through 5th grade
ONLINE lisd.net/indiancreek | facebook.com/indiancreekes | twitter.com/IndianCreekES

STUDENT INFORMATION

536 Students
97.2% Average daily attendance

STAFF INFORMATION

58.7 Total staff members
10.8 Average number of years teaching experience
6.1 Average number of years teaching in LISD schools

PROFESSIONAL LEARNING

Total number of hours the staff spent developing their job skills last year

5,193



Average professional learning hours per Lewisville ISD staff member



OBSERVATION

247

Number of administrator visits to observe class instruction

124 Average number of classroom visits per administrator

At Indian Creek Elementary, we believe:

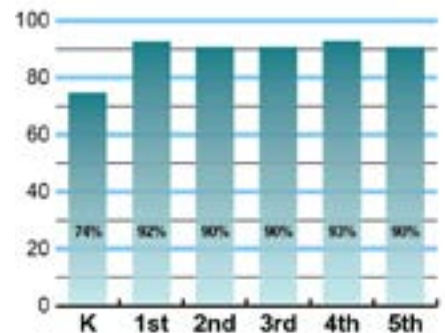
- Building strong relationships is vital in learning
- Positive learning experiences lead to social emotional health and allow students to take risk and learn from their mistakes
- Community engagement is a vital part of the learning process

Indian Creek Elementary School is the heart of the community! We are a diverse community where all students learn together, with one another, and from one another. We are an inclusive school with innovative instructional strategies that support ALL students' learning needs. We believe turning personal interests into learning experiences empowers our students and their love for learning. We are committed to providing student-centered experiences where all students have opportunities to engage in real-world learning, through field trips, hands-on experiences and guest speakers. We value the importance of enriching our students' learning and developing leaders by providing a variety of clubs and organizations. Our partnership with parents and community plays an important role in the success of Indian Creek's students and staff.

ACADEMIC PERFORMANCE

Istation by grade level

Lewisville ISD monitors students' reading progress through the Istation computer program. Teachers can quickly assess which students need help. This chart shows the percent of students reading on grade level or showing six months growth at the end of the school year.



CLUBS

Students engage in learning of their choice beyond the classroom through clubs.

Some of our clubs include Student Council and The Early Bird Show.



What do our parents think?

In April 2021, parents were surveyed about the campus their child attends. Values represent the percentage of respondents who agree. Based on 99 responses.

Are satisfied overall	89.9%
The school staff cares	94.9%
Students know how to get help	90.9%
I know about my child's grades	87.9%
School is safe	98.0%
Students are happy	89.9%
Staff is encouraging	96.0%
Students who fall behind can get help	85.9%
School work is important	88.9%
Students feel welcomed	89.9%
School communicates effectively	81.8%
The staff is approachable	88.9%
They value culture and individual needs	90.9%

COMMON SENSE SCHOOL



Earning the Common Sense School badge is a symbol of our school's dedication and commitment to helping students think critically and use technology responsibly to learn, create, and participate.



PROGRAMS

Our campus offers unique programs to help our students grow. Some of ours include Read Across Indian Creek, 5th Grade Honor Society, Honor Choir, Restorative Practice Campus, K-2 Reading 2x2 Tournament, Reading Bluebonnet, Indian Creek Virtual Reading Talks, Indian Creek Parent Cafe Talks.



ARTS AND ATHLETICS



96%

Participation in athletics or physical education

97%

Participation in fine arts such as music and art

AWARDS AND RECOGNITIONS

- Teacher of the Year Coach Parker
- National PTA School of Excellence
- Principal of the Year Finalist
- Friendly Falcon
- CREST
- LEF Grants for Teachers

INDIAN CREEK ELEMENTARY SCHOOL

Home of the Falcons
Carrollton, Texas

Lori Sowers, Principal

