

# Huffines Middle School

## Campus Profile

**SCHOOL HOURS** 8:55 a.m. to 4:10 p.m. **GRADES** 6th through 8th grade  
**ONLINE** [lisd.net/huffines](http://lisd.net/huffines) | [facebook.com/huffinesms](https://facebook.com/huffinesms) | [twitter.com/HuffinesMS](https://twitter.com/HuffinesMS)

### STUDENT INFORMATION

**797** Students  
**96.6%** Average daily attendance

### STAFF INFORMATION

**80.37** Total staff members  
**9.6** Average number of years teaching experience  
**7** Average number of years teaching in LISD schools

### PROFESSIONAL LEARNING

Total number of hours the staff spent developing their job skills last year

**6,305**

**63.7**

Average professional learning hours per Lewisville ISD staff member



### OBSERVATION

**371** Number of administrator visits to observe class instruction

**93** Average number of classroom visits per administrator

### The Huffines commitment

At Huffines Middle School, our students are productive, independent thinkers in a dynamic, global society. We partner with our community to foster authentic learning, infused with technology to cultivate independent thought. Huffines also provides students the opportunity to engage in real-world learning experiences through our fine arts programs, athletic programs, before and after-school programs such as GOAL, student council and National Junior Honor Society. Our students also give back to the community through the many philanthropic activities such as planting trees for our Lewisville parks, sewing pillowcases for a community in Chile and raising money to donate shoes to the LISD Dress to Learn closet.



### ACADEMIC PERFORMANCE

#### PSAT SCORES AND ADVANCED COURSES

Percent of students whose PSAT test scores indicate they are college and career ready. Percent of student population who are enrolled in at least one advanced course.



PSAT Reading **39.7%**



PSAT Math **18.6%**



Pre AP/AP enrolled **59%**

## CLUBS

Clubs provide opportunities for students to engage in learning of their choice beyond the classroom.

Some of our clubs include NJHS, Student Council, Circle of Friends, Academic UIL, Chess, Fellowship of Christian Athletes, and Robotics.



## What do our parents think?

In April 2021, parents were surveyed about the campus their child attends. Values represent the percentage of respondents who agree. Based on 111 responses.

Are satisfied overall	93.7%
The school staff cares	98.2%
Students know how to get help	91.0%
I know about my child's grades	97.3%
School is safe	94.6%
Students are happy	90.1%
Staff is encouraging	95.5%
Students who fall behind can get help	96.4%
School work is important	92.8%
Students feel welcomed	87.4%
School communicates effectively	93.7%
The staff is approachable	95.5%
They value culture and individual needs	94.6%

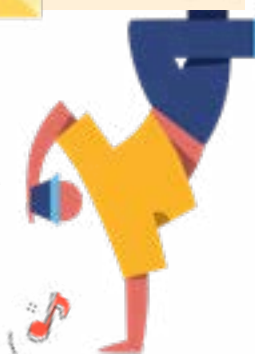
## COMMON SENSE SCHOOL

Earning the Common Sense School badge is a symbol of our school's dedication and commitment to helping students think critically and use technology responsibly to learn, create, and participate.



## PROGRAMS

Our campus offers unique programs to help our students become better learners, leaders, and friends. Some of ours include AVID, UIL Academics, AP Spanish, Fine Arts Programs, Cheerleading, Yearbook, Husky Help, High School Mentors, ESL, LEAP, GT Science, and MTA.



## ARTS AND ATHLETICS



**100%**  
Participation in athletics or physical education

**82%**  
Participation in fine arts such as music and art

## AWARDS AND RECOGNITIONS

- Texas PTA Secondary Teacher of the Year 2019
- Lewisville Chamber Educator of the Year Finalist
- 2021 UIL Sweepstakes winning Band, Orchestra and Choir
- FC Dallas Teacher of the Month 2018
- Lewisville Chamber Teacher of the Month
- Lewisville Chamber School of the Month
- Art Students receive Superior rating at the annual Jr. VASE
- LISD First-Year Teacher of the Year 2017
- ENERGY STAR certified school
- National PTA School of Excellence

## HUFFINES MIDDLE SCHOOL

Home of the Huskies  
Lewisville, Texas

*Stephanie Gore, Principal*

