

Homestead Elementary School

Campus Profile

SCHOOL HOURS 7:45 a.m. to 3 p.m. **GRADES** Kindergarten through 5th grade
ONLINE lisd.net/homestead | facebook.com/homesteades | twitter.com/HomesteadES

STUDENT INFORMATION

493 Students
97.3% Average daily attendance

STAFF INFORMATION

47.4 Total staff members
18.5 Average number of years teaching experience
14.5 Average number of years teaching in LISD schools

PROFESSIONAL LEARNING

Total number of hours the staff spent developing their job skills last year

3,934

77.1

Average professional learning hours per Lewisville ISD staff member



OBSERVATION

188

Number of administrator visits to observe class instruction

94 Average number of classroom visits per administrator

At Homestead Elementary, we believe:

All of our students are lifelong learners who demonstrate integrity and personal excellence in a future they create.

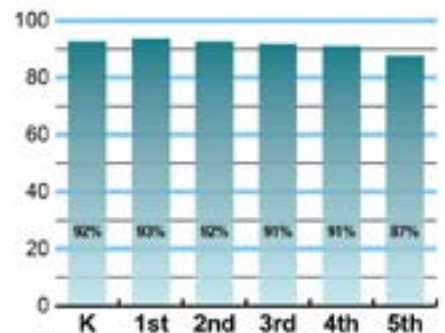
Homestead Elementary students, staff, and community work in partnership to create a positive, caring learning environment where students will be challenged through collaborative and innovative experiences to succeed in academics and life. We have a vibrant school community that is committed to the success of all students.



ACADEMIC PERFORMANCE

Istation by grade level

Lewisville ISD monitors students' reading progress through the Istation computer program. Teachers can quickly assess which students need help. This chart shows the percent of students reading on grade level or showing six months growth at the end of the school year.



CLUBS

Clubs provide opportunities for students to engage in learning of their choice beyond the classroom.

Some of our clubs include Science Club, Robotics Club, Student Council, Destination Imagination, Honor Choir, and Circle of Friends.

COMMON SENSE SCHOOL

Earning the Common Sense School badge is a symbol of our school's dedication and commitment to helping students think critically and use technology responsibly to learn, create, and participate.



PROGRAMS

Our campus offers unique programs to help our students become better learners, leaders, and friends.

Some of our programs include STEM discovery class.



ARTS AND ATHLETICS



99%
Participation in athletics or physical education

100%
Participation in fine arts such as music and art

AWARDS AND RECOGNITIONS

- LISD District Teacher of the Year
- LISD Campus Support Personnel Winner
- CREST Award Winner
- National Award Winning PTA



What do our parents think?

In April 2021, parents were surveyed about the campus their child attends. Values represent the percentage of respondents who agree. Based on 116 responses.

Are satisfied overall	95.7%
The school staff cares	98.3%
Students know how to get help	94.8%
I know about my child's grades	91.4%
School is safe	98.3%
Students are happy	98.3%
Staff is encouraging	95.7%
Students who fall behind can get help	87.9%
School work is important	92.2%
Students feel welcomed	99.1%
School communicates effectively	87.9%
The staff is approachable	94.0%
They value culture and individual needs	91.4%

HOMESTEAD ELEMENTARY SCHOOL

Home of the Mustangs
Carrollton, Texas

Sean Perry, Principal

