

Griffin Middle School

Campus Profile

SCHOOL HOURS ONLINE

8:55 a.m. to 4:10 p.m. **GRADES** 6th through 8th grade
lisd.net/griffin | facebook.com/griffinms | twitter.com/griffin_ms

STUDENT INFORMATION

755 Students
95.3% Average daily attendance

STAFF INFORMATION

73.17 Total staff members
11.5 Average number of years teaching experience
7.3 Average number of years teaching in LISD schools

PROFESSIONAL LEARNING

Total number of hours the staff spent developing their job skills last year

4492

58.4

Average professional learning hours per Lewisville ISD staff member



OBSERVATION

300

Number of administrator visits to observe class instruction

100 Average number of classroom visits per administrator

At Griffin Middle School, we foster a:

Positive and Respectful environment that will help nurture each student as an Individual, and we celebrate the Diversity of our campus and Encourage students to achieve at levels beyond their beliefs.

The Griffin staff is committed to providing a rigorous and engaging academic experience while remaining attentive to the social and emotional needs that arise in these middle years.

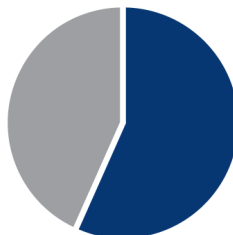
Our students have opportunities to excel academically, as well as to explore interests such as athletics, fine arts, foreign language, culinary arts, robotics and gaming, community service and student government. As a campus, we are committed to providing authentic experiences to enrich and expand student learning by bringing engaging speakers to campus as well as participating in field trips off campus.

When students leave Griffin, they are prepared for a multitude of high school programs and for success in life well beyond the school years.

ACADEMIC PERFORMANCE

PSAT SCORES AND ADVANCED COURSES

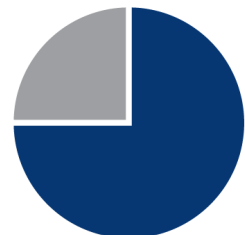
Percent of students whose PSAT test scores indicate they are college and career ready. Percent of student population who are enrolled in at least one advanced course.



PSAT Reading **56.9%**



PSAT Math **35.9%**



Honors/AP enrolled **75%**

CLUBS

Clubs provide opportunities for students to learn beyond the classroom.

Some of our clubs include Art Club, Circle of Friends, Dance club, Winterguard, Book club, and Student Council.



What do our parents think?

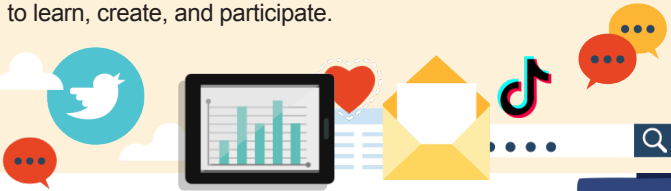
In April 2023, parents were surveyed about the campus their child attends. Values represent the percentage of respondents who agree. Based on 111 responses.

Are satisfied overall	99.1%
I can reach out to staff to discuss my concerns	95.4%
My child feels they can go to staff for help	91.8%
My child feels that school work is important	89.7%
My child feels safe at school	98.2%
Most of the time, my child is happy at school	94.5%
School staff values my child's culture and needs	96.3%
My child's mental health and wellness are supported	97.3%
I am informed about my child's progress and grades	93.5%
Parents feel welcomed at school and are involved	99.1%
Teachers do well to help students who fall behind	89.9%
School staff communicates well with families	94.5%
School staff cares about my child	98.2%
School staff encourages my child to do their best	97.2%
I am satisfied with the school's health protocols	95.4%
I am satisfied with the school's safety protocols	95.5%

DIGITAL CITIZENSHIP



Renewed for next year. Earning the Common Sense School badge is a symbol of our school's dedication and commitment to helping students think critically and use technology responsibly to learn, create, and participate.

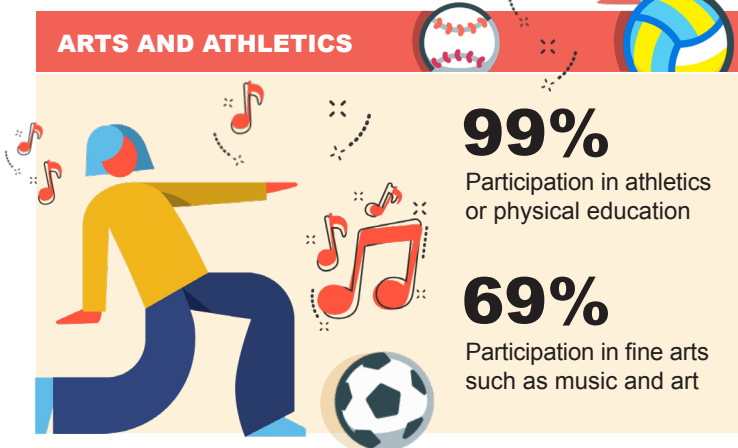


PROGRAMS

Our campus offers unique programs to help our students become better learners, leaders, and friends. Some of ours include AVID, Student Council, NJHS, PALS, Communities in Schools, and various mentoring programs.



ARTS AND ATHLETICS



AWARDS AND RECOGNITIONS

- Common Sense Media Campus since 2019
- LISD Paraprofessional of the year 2021
- Recipient of LEF grants for past three years
- CREST Counseling Award for 2022
- Largest number of students accepted into the TCHS Collegiate Academy for the 2022-23 school year

GRIFFIN MIDDLE SCHOOL

Home of The Pride
The Colony, Texas

Dr. Jacob Garlinger, Principal

