

Garden Ridge Elementary School Campus Profile

SCHOOL HOURS 7:45 a.m. to 3 p.m. **GRADES** Kindergarten through 5th grade
ONLINE lisd.net/gardenridge | facebook.com/gardenridgees | twitter.com/GardenRidgeES

STUDENT INFORMATION

370 Students
97.4% Average daily attendance

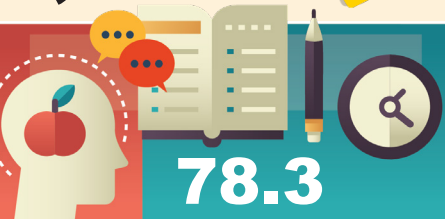
STAFF INFORMATION

50.79 Total staff members
12.3 Average number of years teaching experience
9.7 Average number of years teaching in LISD schools

PROFESSIONAL LEARNING

Total number of hours the staff spent developing their job skills last year

4,309



Average professional learning hours per Lewisville ISD staff member

628

OBSERVATION

Number of administrator visits to observe class instruction

314 Average number of classroom visits per administrator

At Garden Ridge Elementary we believe:

- Students should be provided engaging real-world learning experiences.
- Students are challenged through risk taking and varied opportunities.
- Students are provided a learning environment that is safe and supportive in order to be successful.

At Garden Ridge Elementary we are committed to developing 21st-century learners.

All students have the opportunity to engage in inclusive experiences that ensure each child has the academic skills and social emotional support needed to be successful.

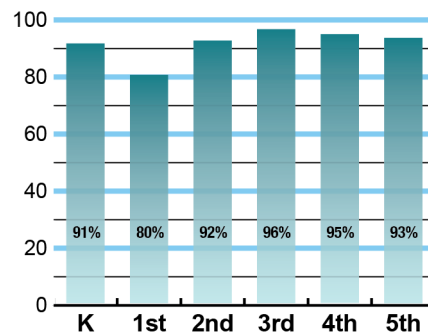
Through hands-on activities, community partnerships, field trips, and real-world experiences students are challenged to push beyond themselves in order to have more meaningful and relevant learning experiences.

Staff at Garden Ridge Elementary are passionate about learning and striving to help students reach their fullest potential.

ACADEMIC PERFORMANCE

Istation by grade level

Lewisville ISD monitors students' reading progress through the Istation computer program. Teachers can quickly assess which students need help. This chart shows the percent of students reading on grade level or showing six months growth at the end of the school year.



CLUBS

Clubs provide opportunities for students to engage in learning of their choice beyond the classroom.

Some of ours include Coding Club, Art Club, Student Council, Running Club, Choir, Broadcast Team, and Fuel Up to Play 60.



What do our parents think?

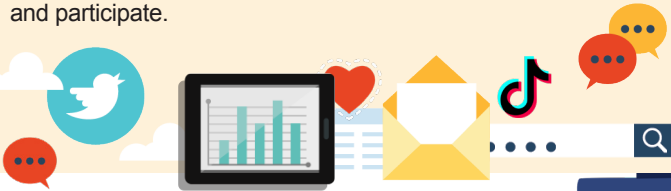
In April 2021, parents were surveyed about the campus their child attends. Values represent the percentage of respondents who agree. Based on 118 responses.

Are satisfied overall	94.9%
The school staff cares	96.6%
Students know how to get help	91.5%
I know about my child's grades	95.8%
School is safe	95.8%
Students are happy	94.9%
Staff is encouraging	95.8%
Students who fall behind can get help	89.8%
School work is important	94.1%
Students feel welcomed	86.4%
School communicates effectively	90.7%
The staff is approachable	90.7%
They value culture and individual needs	88.1%

COMMON SENSE SCHOOL



Earning the Common Sense School badge is a symbol of our school's dedication and commitment to helping students think critically and use technology responsibly to learn, create, and participate.



PROGRAMS

Our unique programs help our students grow. Some of ours are Hands On CPR and choking training, Gator Pals Mentoring Program, Magical Sightings, Circle of Friends, Creator Gator, WATCH Dogs, Counselor Corner, Multicultural Night and Curriculum Nights.



ARTS AND ATHLETICS



100%

Participation in athletics or physical education

97%

Participation in fine arts such as music and art

AWARDS AND RECOGNITIONS

- Kindness Certified School
- CREST
- LEF Grants to teachers
- Texas School Counseling Association (TSCA) Campus Administrator of the Year
- TSCA Elementary Counselor of the Year
- TSCA Counselor Advocate of the Year
- ENERGY STAR certified school
- Common Sense School
- Elementary First Year Teacher of the Year

GARDEN RIDGE ELEMENTARY SCHOOL

Home of the Gators
Flower Mound, Texas

Kelly Roden, Principal

