

# Forest Vista Elementary School

## Campus Profile

**SCHOOL HOURS** 7:45 a.m. to 3 p.m. **GRADES** Kindergarten through 5th grade  
**ONLINE** [lisd.net/forestvista](http://lisd.net/forestvista) | [facebook.com/forestvista](https://facebook.com/forestvista) | [twitter.com/ForestVistaES](https://twitter.com/ForestVistaES)

### STUDENT INFORMATION

**477** Students  
**97.3%** Average daily attendance

### STAFF INFORMATION

**58.42** Total staff members  
**12.7** Average number of years teaching experience  
**10** Average number of years teaching in LISD schools

### PROFESSIONAL LEARNING

Total number of hours the staff spent developing their job skills last year

**5,087**

**79.5**

Average professional learning hours per Lewisville ISD staff member



### OBSERVATION

**270** Number of administrator visits to observe class instruction

**90** Average number of classroom visits per administrator

### At Forest Vista Elementary, we believe:

- Every student can learn
- Reading is the foundation for learning
- Differentiated education is necessary
- Parent support and involvement are important

We have a dedicated group of professional educators, a good group of students eager to learn, and parents who are supportive of the school and active in their child's education. Our campus is known for a high level of academic performance.

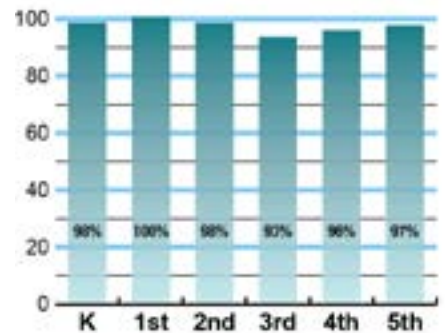
Our campus maintains strong music and art programs. We have a supportive Special Education staff. Forest Vista's library is well stocked in books to engage the children in reading, in addition to a reading enrichment program. We have readily available technology and appropriate training. We also have an active and supportive PTA.



### ACADEMIC PERFORMANCE

#### Istation by grade level

Lewisville ISD monitors students' reading progress through the Istation computer program. Teachers can quickly assess which students need help. This chart shows the percent of students reading on grade level or showing six months growth at the end of the school year.



## CLUBS

Students engage in learning of their choice beyond the classroom through clubs. Ours include Choir (4th & 5th grades), Running Club (4th and 5th grades), Art Club (5th grade), Chess Club (3rd, 4th, and 5th grades), Chimes (5th grade) and Student Council.



## What do our parents think?

In April 2021, parents were surveyed about the campus their child attends. Values represent the percentage of respondents who agree. Based on 145 responses.

Are satisfied overall	97.2%
The school staff cares	97.2%
Students know how to get help	93.8%
I know about my child's grades	93.1%
School is safe	99.3%
Students are happy	97.2%
Staff is encouraging	97.2%
Students who fall behind can get help	93.1%
School work is important	95.2%
Students feel welcomed	96.6%
School communicates effectively	95.2%
The staff is approachable	95.9%
They value culture and individual needs	95.9%

## COMMON SENSE SCHOOL

Earning the Common Sense School badge is a symbol of our school's dedication and commitment to helping students think critically and use technology responsibly to learn, create, and participate.



## PROGRAMS

Our campus offers unique programs to help our students become better learners, leaders, and friends. Some of ours include ICARE Character Education Program, Accelerated Reader Enrichment Program, Student Safety Patrol Group, and Student Buddies.



## ARTS AND ATHLETICS



**100%**  
Participation in athletics or physical education

**100%**  
Participation in fine arts such as music and art

## AWARDS AND RECOGNITIONS

- TEPSA Student Leadership Award 2019, 2018
- Choir invited to perform at Texas Music Educators Association 2020 conference
- Chamber of Commerce School of the Month April 2019
- PTA Golden Apple Award 2019, 2018
- ENERGY STAR certified school
- LEF Campus Excellence Grant 2017

## FOREST VISTA ELEMENTARY SCHOOL

Home of the Eagles  
Flower Mound, Texas

*Dr. Patrick Schott, Principal*

