

Durham Middle School

Campus Profile

SCHOOL HOURS ONLINE

8:55 a.m. to 4:10 p.m. **GRADES** 6th through 8th grade

lisd.net/durham | facebook.com/durhamms | twitter.com/DurhamMS

STUDENT INFORMATION

715	Students
90.7%	Average daily attendance

STAFF INFORMATION

82.89	Total staff members
9.2	Average number of years teaching experience
5.0	Average number of years teaching in LISD schools

PROFESSIONAL LEARNING

Total number of hours the staff spent developing their job skills last year

4992

47.5

Average professional learning hours per Lewisville ISD staff member



OBSERVATION

Number of administrator visits to observe class instruction

375

94 Average number of classroom visits per administrator

Our commitment

At Durham Middle School, we strive to build a student's school experience around the five pillars of Durham P.R.I.D.E.:

- **Prepare** - We will prepare each student for their future success
- **Respect** - Students will respect themselves and others in a positive culture
- **Integrity** - We will seek to foster integrity and honesty
- **Determine** - Each student will determine to be successful
- **Engage** - We will engage our students to enhance the learning environment.

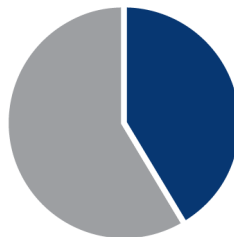
At Durham Middle School, we want each learner to feel P.R.I.D.E. about who they are and where they are to be part of a long maroon line of success.



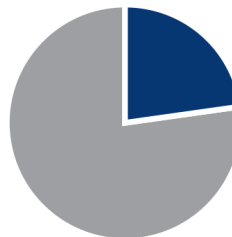
ACADEMIC PERFORMANCE

PSAT SCORES AND ADVANCED COURSES

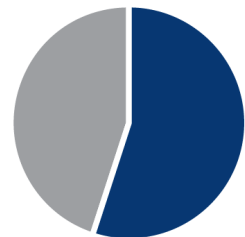
Percent of students whose PSAT test scores indicate they are college and career ready. Percent of student population who are enrolled in at least one advanced course.



PSAT Reading **41.4%**



PSAT Math **22.8%**



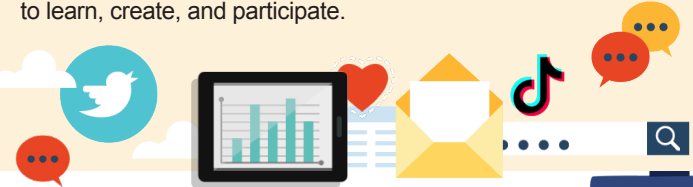
Honors/AP enrolled **55%**

CLUBS

Clubs provide opportunities for students to engage in learning of their choice beyond the classroom. Some of our clubs include E-Sports, Dance Team, Anime Club, Chess Club, Science Club, Stand for Colors, Ultimate Frisbee Club, Circle of Friends, UIL Academics, Art Club, Student Council, and Cheerleading.

DIGITAL CITIZENSHIP

Renewed for next year. Earning the Common Sense School badge is a symbol of our school's dedication and commitment to helping students think critically and use technology responsibly to learn, create, and participate.



PROGRAMS

Our campus offers unique programs to help our students become better learners, leaders, and friends. Some of ours include Band, Choir, Orchestra, Theater, Cheerleading, Family and Consumer Science, Robotics, AVID, Men of Distinction, and Lunch with a Leader.



ARTS AND ATHLETICS

100%

Participation in athletics or physical education

74%

Participation in fine arts such as music and art



AWARDS AND RECOGNITIONS

- ENERGY STAR certified school
- Highly Certified AVID site
- Common Sense School 2021-2023 and 2023-2024



What do our parents think?

In April 2023, parents were surveyed about the campus their child attends. Values represent the percentage of respondents who agree. Based on 64 responses.

Are satisfied overall	69.8%
I can reach out to staff to discuss my concerns	78.7%
My child feels they can go to staff for help	75.8%
My child feels that school work is important	82.0%
My child feels safe at school	76.7%
Most of the time, my child is happy at school	72.6%
School staff values my child's culture and needs	83.9%
My child's mental health and wellness are supported	80.3%
I am informed about my child's progress and grades	83.6%
Parents feel welcomed at school and are involved	90.2%
Teachers do well to help students who fall behind	84.1%
School staff communicates well with families	79.4%
School staff cares about my child	81.0%
School staff encourages my child to do their best	83.3%
I am satisfied with the school's health protocols	88.9%
I am satisfied with the school's safety protocols	88.7%

DURHAM
MIDDLE SCHOOL

Home of the Dragons
Lewisville, Texas

Gary Holt, Principal

