



Downing Middle School STEM Campus Profile

SCHOOL HOURS 8:55 a.m. to 4:10 p.m. **GRADES** 6th through 8th grade
ONLINE lisd.net/downing | facebook.com/downingms | twitter.com/DowningMS

STUDENT INFORMATION

500 Students
97.0% Average daily attendance

STAFF INFORMATION

47.32 Total staff members
14.8 Average number of years teaching experience
10.5 Average number of years teaching in LISD schools

PROFESSIONAL LEARNING

Total number of hours the staff spent developing their job skills last year

3,609

70.8

Average professional learning hours per Lewisville ISD staff member



OBSERVATION

Number of administrator visits to observe class instruction

480

160 Average number of classroom visits per administrator

The Downing commitment

Since opening its doors in 2001, Downing Middle School has been distinguished as an exemplary academic institution that is committed to teaching students the skills necessary to reach their full potential both inside and outside of the classroom. The Downing administration, faculty and staff pride themselves on creating an environment that stimulates creativity, fosters curiosity, and sparks innovation.

At Downing Middle School, we strive to create confident learners by providing opportunities for every student to thrive. We believe all students can learn and deserve to be challenged every day. Downing Middle School students are strongly encouraged to explore their own interests and are empowered to become leaders in their community. The mission of Downing Middle School is to provide each student with a learning environment that is safe, nurturing, innovative, and engaging. The faculty and staff at Downing Middle School are committed to meeting the unique needs of every student and helping them develop the skills required for success in the 21st century.



ACADEMIC PERFORMANCE

PSAT SCORES AND ADVANCED COURSES

Percent of students whose PSAT test scores indicate they are college and career ready. Percent of student population who are enrolled in at least one advanced course.



PSAT Reading 88%



PSAT Math 71.8%



Pre AP/AP enrolled 77%

CLUBS

Clubs allow students to learn beyond the classroom. Some of our clubs include Downing United Club, National Junior Honor Society, Downing Archery Club, Circle of Friends, Fellowship of Christian Athletes, Study Buddies, Guy Talk Club, Breakfast Friends Club, and New Horizon's Club.



What do our parents think?

In April 2021, parents were surveyed about the campus their child attends. Values represent the percentage of respondents who agree. Based on 133 responses.

Are satisfied overall	91.0%
The school staff cares	91.0%
Students know how to get help	88.7%
I know about my child's grades	90.2%
School is safe	98.5%
Students are happy	94.7%
Staff is encouraging	96.2%
Students who fall behind can get help	89.5%
School work is important	90.2%
Students feel welcomed	92.5%
School communicates effectively	91.0%
The staff is approachable	89.5%
They value culture and individual needs	90.2%

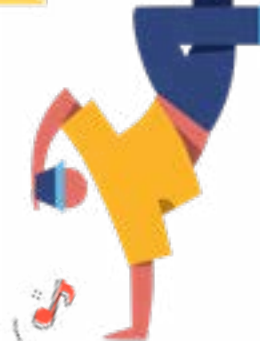
COMMON SENSE SCHOOL

Earning the Common Sense School badge is a symbol of our school's dedication and commitment to helping students think critically and use technology responsibly to learn, create, and participate.



PROGRAMS

Our campus offers unique programs to help our students grow. Some of these include Giving Bach Program, Downing Kindness Initiative, Downing Stuffs the Pantry, Seeds For Special Needs Initiative, and Nationally Recognized "No Place for Hate" Campus for five years running.



ARTS AND ATHLETICS



99%
Participation in athletics or physical education

89%
Participation in fine arts such as music and art

AWARDS AND RECOGNITIONS

- TEA (Texas Education Agency) STAAR Met Standard Ratings for Academic Excellence
- Texas Business and Education Coalition Honor Roll School
- Superior Ratings at UIL Competitions for band, orchestra and choir
- Division championships in football, volleyball, basketball, soccer and cross country
- Junior Visual Arts Scholastic League medalist
- 1st Place IBM Engineers Week Design Contest

DOWNING MIDDLE SCHOOL

Home of the Diamondbacks
Flower Mound, Texas

Curtis Martin, Principal

