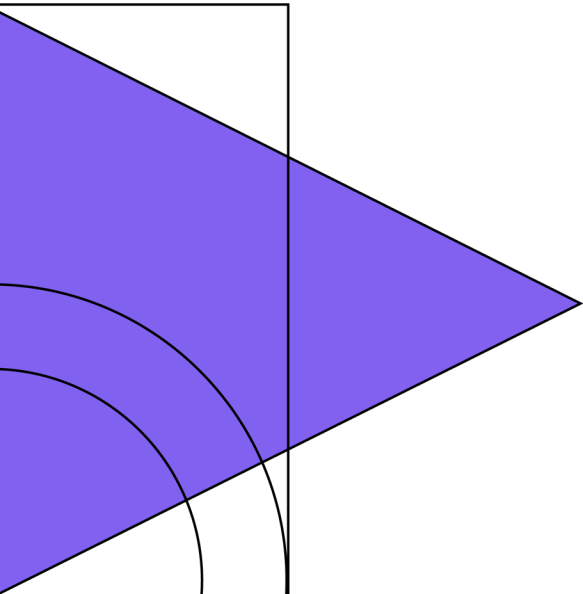
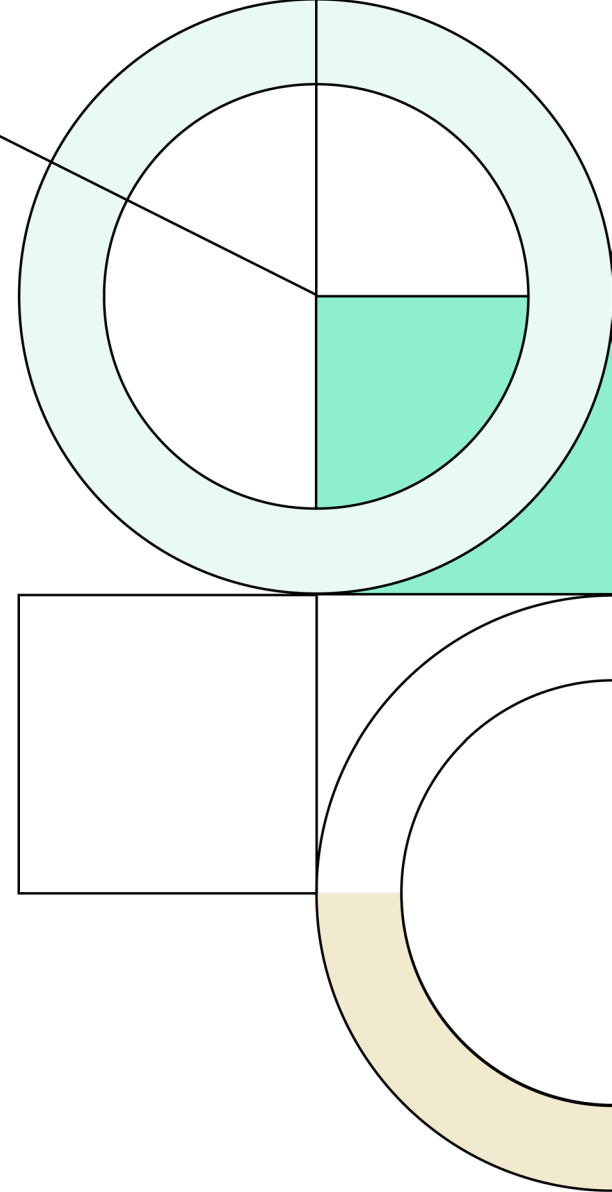




**Lewisville
Independent
School
District**

3Q23

Demographic Report





Annual Enrollment Change

Year (OCT)	EE	PK	K	1st	2nd	3rd	4th	5th	6th	7th	8th	9th	10th	11th	12th	Totals	Total Growth	% Growth
2019/20	238	1,650	3,538	3,412	3,497	3,495	3,576	3,806	3,875	3,933	3,982	4,456	4,317	4,258	4,156	52,189		
2020/21	233	926	2,939	3,345	3,227	3,332	3,422	3,474	3,732	3,850	3,943	4,252	4,353	4,178	4,204	49,410	-2,779	-5.3%
2021/22	0	1,239	3,148	3,219	3,357	3,321	3,343	3,422	3,591	3,764	3,905	4,311	4,183	4,156	4,122	49,081	-329	-0.7%
2022/23	196	1,187	3,106	3,295	3,306	3,419	3,414	3,386	3,569	3,650	3,804	4,224	4,117	4,002	4,013	48,688	-393	-0.8%
2023/24	156	1,219	3,070	3,225	3,337	3,347	3,528	3,390	3,440	3,621	3,688	4,085	4,139	4,044	4,067	48,356	-332	-0.7%

*Yellow Box = largest grade per year
Green Box = second largest grade per year

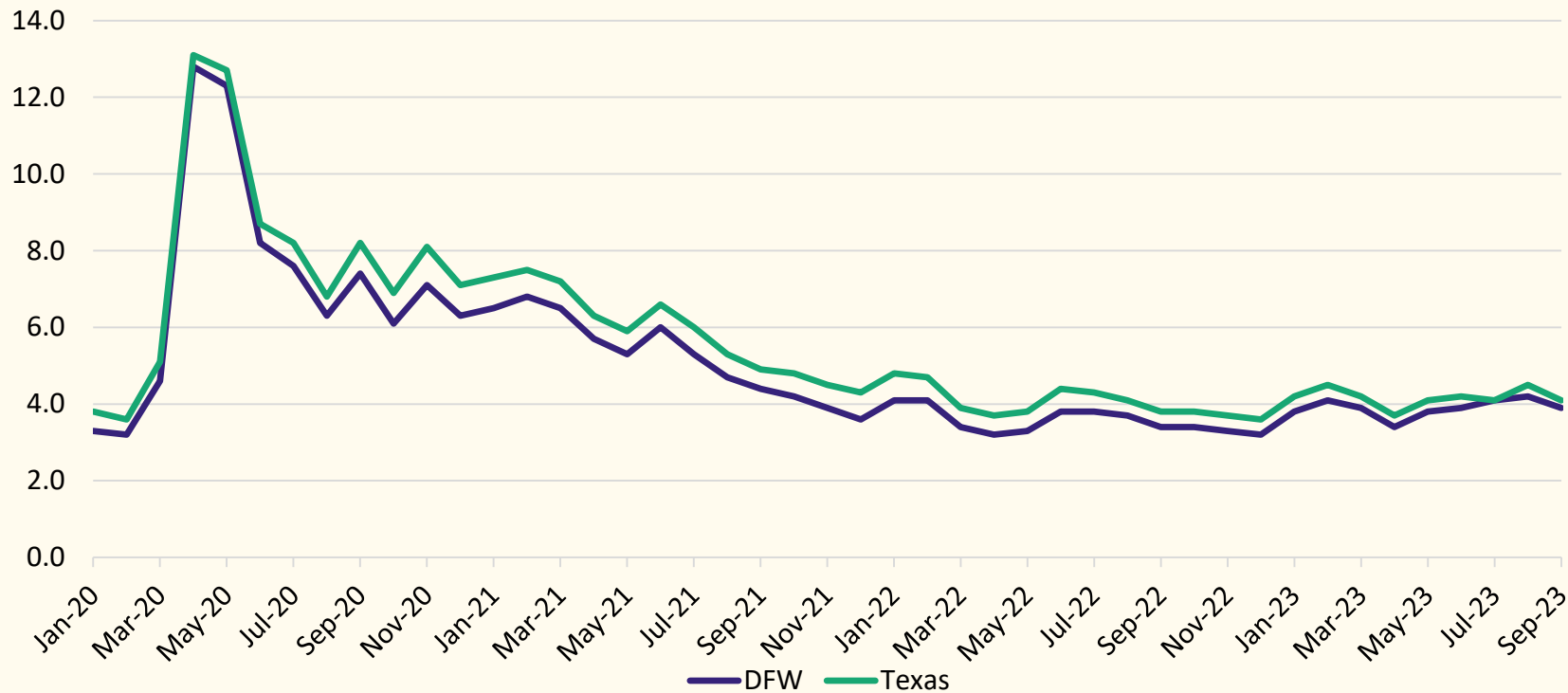
2023/24	196	1,158	3,132	3,202	3,357	3,382	3,466	3,451	3,455	3,601	3,689	4,037	4,114	3,985	3,926	48,151		
	-40	61	-62	23	-20	-35	62	-61	-15	20	-1	48	25	59	141	205		
	-25.6%	5.0%	-2.0%	0.7%	-0.6%	-1.0%	1.8%	-1.8%	-0.4%	0.6%	0.0%	1.2%	0.6%	1.5%	3.5%	0.4%		

	K	1st	2nd	3rd	4th	5th	6th	7th	8th	9th	10th	11th	12th	PCT GRW	Elem	MS	HS
3 Year Avg.	1.015	1.060	1.014	1.020	1.021	1.002	1.031	1.013	1.012	1.083	0.973	0.965	0.989	1.014	1.022	1.019	1.002
2020/21	0.831	0.945	0.946	0.953	0.979	0.971	0.981	0.994	1.003	1.068	0.977	0.968	0.987	97.7%	0.938	0.992	1.000
2021/22	1.071	1.095	1.004	1.029	1.003	1.000	1.034	1.009	1.014	1.093	0.984	0.955	0.987	101.9%	1.034	1.019	1.005
2022/23	0.987	1.047	1.027	1.018	1.028	1.013	1.043	1.016	1.011	1.082	0.955	0.957	0.966	101.1%	1.020	1.023	0.990
2023/24	0.988	1.038	1.013	1.012	1.032	0.993	1.016	1.015	1.010	1.074	0.980	0.982	1.016	101.3%	1.013	1.014	1.013

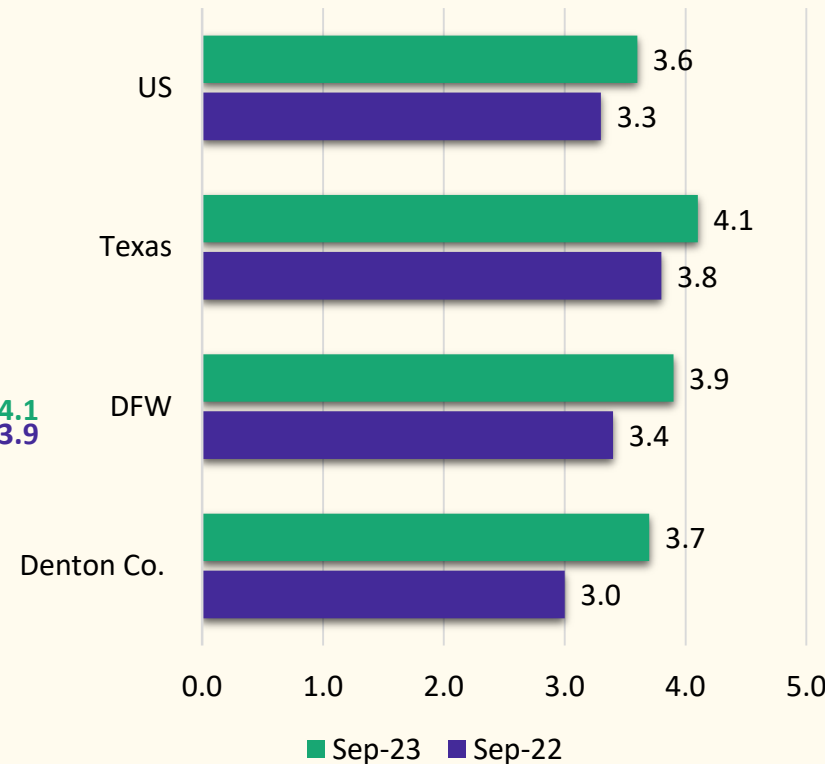


Local Economic Conditions

Unemployment Rate, Jan. 2019 - September 2023



Unemployment Rate, Year over Year

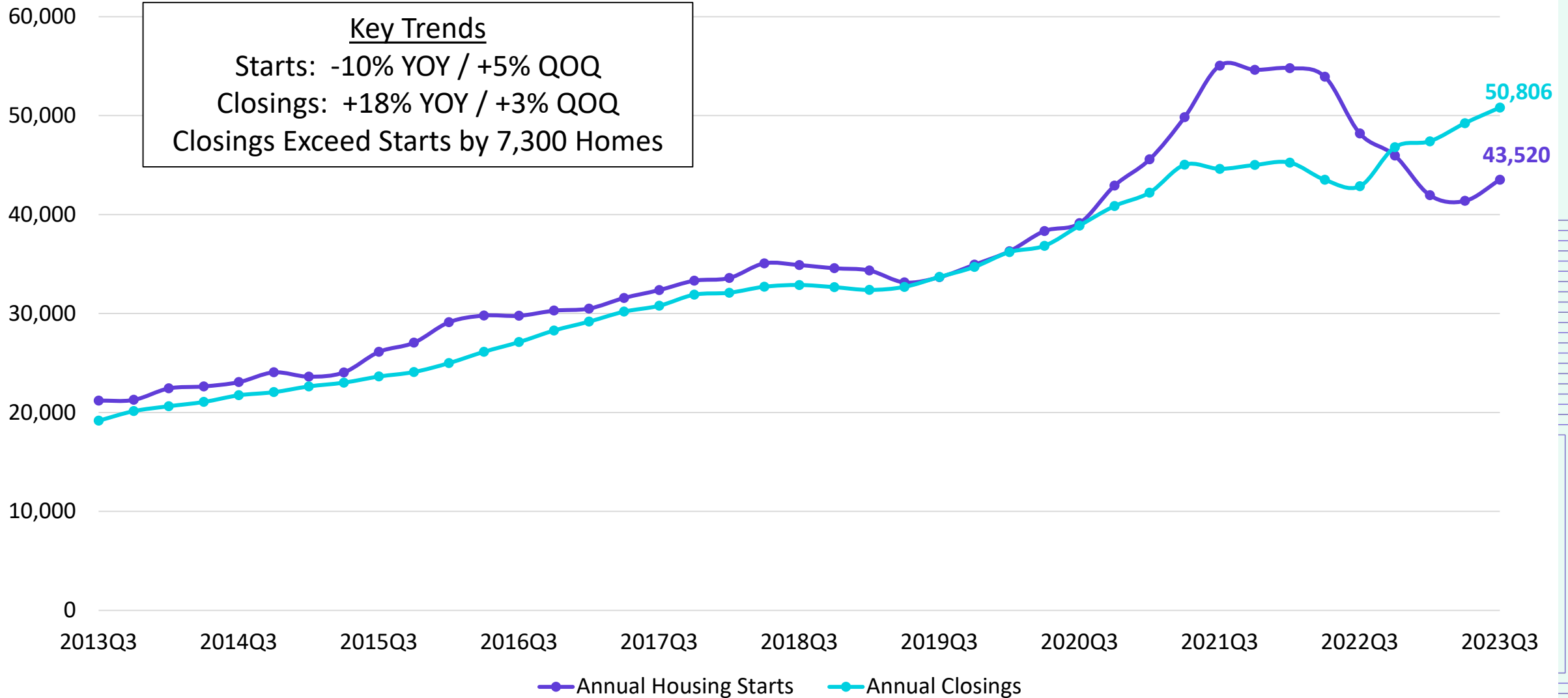




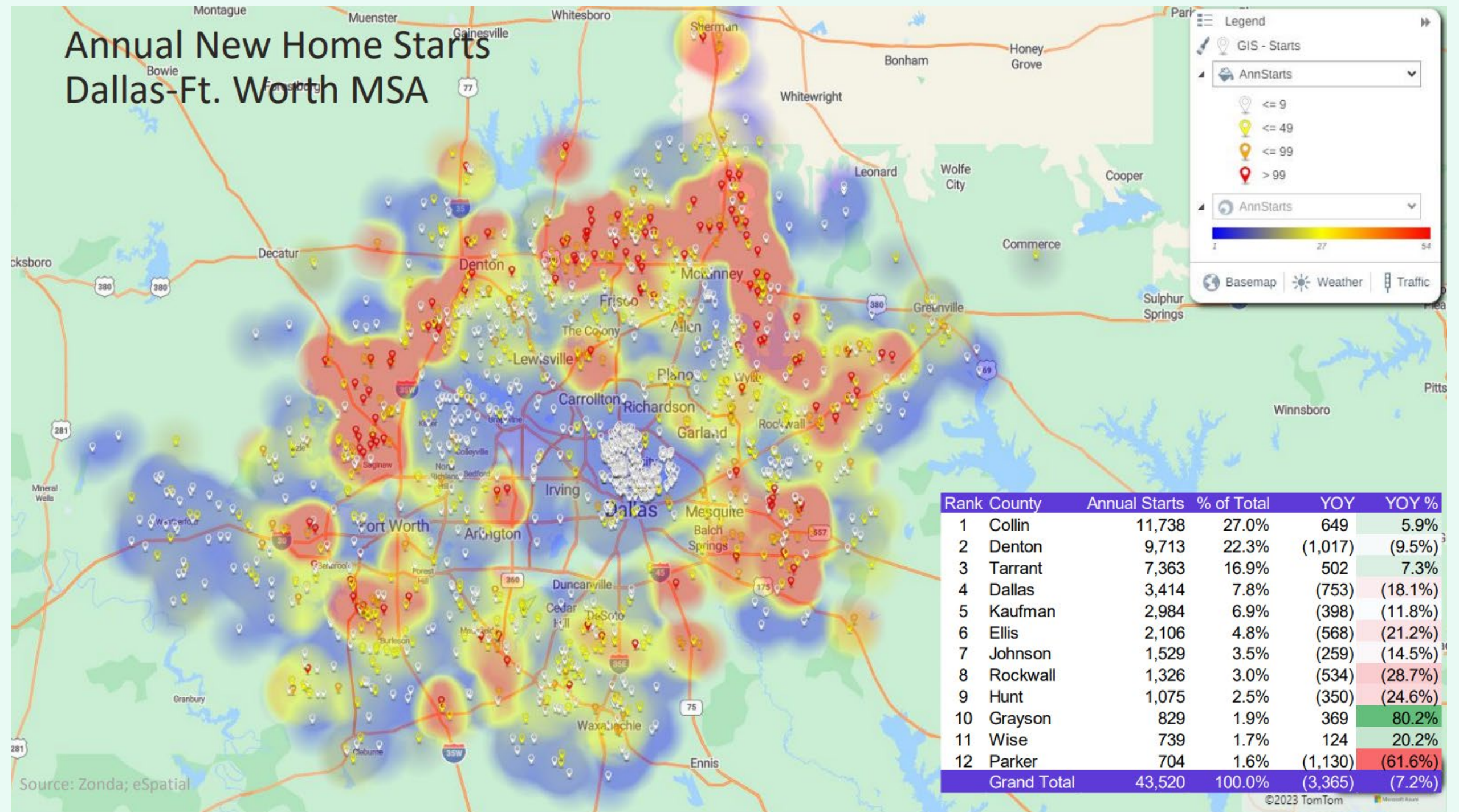
DFW New Home Starts & Closings

Annual Housing Starts vs. Annual Closings

Key Trends
 Starts: -10% YOY / +5% QOQ
 Closings: +18% YOY / +3% QOQ
 Closings Exceed Starts by 7,300 Homes



Annual New Home Starts Dallas-Ft. Worth MSA



Legend

GIS - Starts

AnnStarts

- <= 9
- <= 49
- <= 99
- > 99

AnnStarts

1 27 54

Basemap Weather Traffic

Rank	County	Annual Starts	% of Total	YOY	YOY %
1	Collin	11,738	27.0%	649	5.9%
2	Denton	9,713	22.3%	(1,017)	(9.5%)
3	Tarrant	7,363	16.9%	502	7.3%
4	Dallas	3,414	7.8%	(753)	(18.1%)
5	Kaufman	2,984	6.9%	(398)	(11.8%)
6	Ellis	2,106	4.8%	(568)	(21.2%)
7	Johnson	1,529	3.5%	(259)	(14.5%)
8	Rockwall	1,326	3.0%	(534)	(28.7%)
9	Hunt	1,075	2.5%	(350)	(24.6%)
10	Grayson	829	1.9%	369	80.2%
11	Wise	739	1.7%	124	20.2%
12	Parker	704	1.6%	(1,130)	(61.6%)
Grand Total		43,520	100.0%	(3,365)	(7.2%)

Source: Zonda; eSpatial



DFW New Home Ranking Report

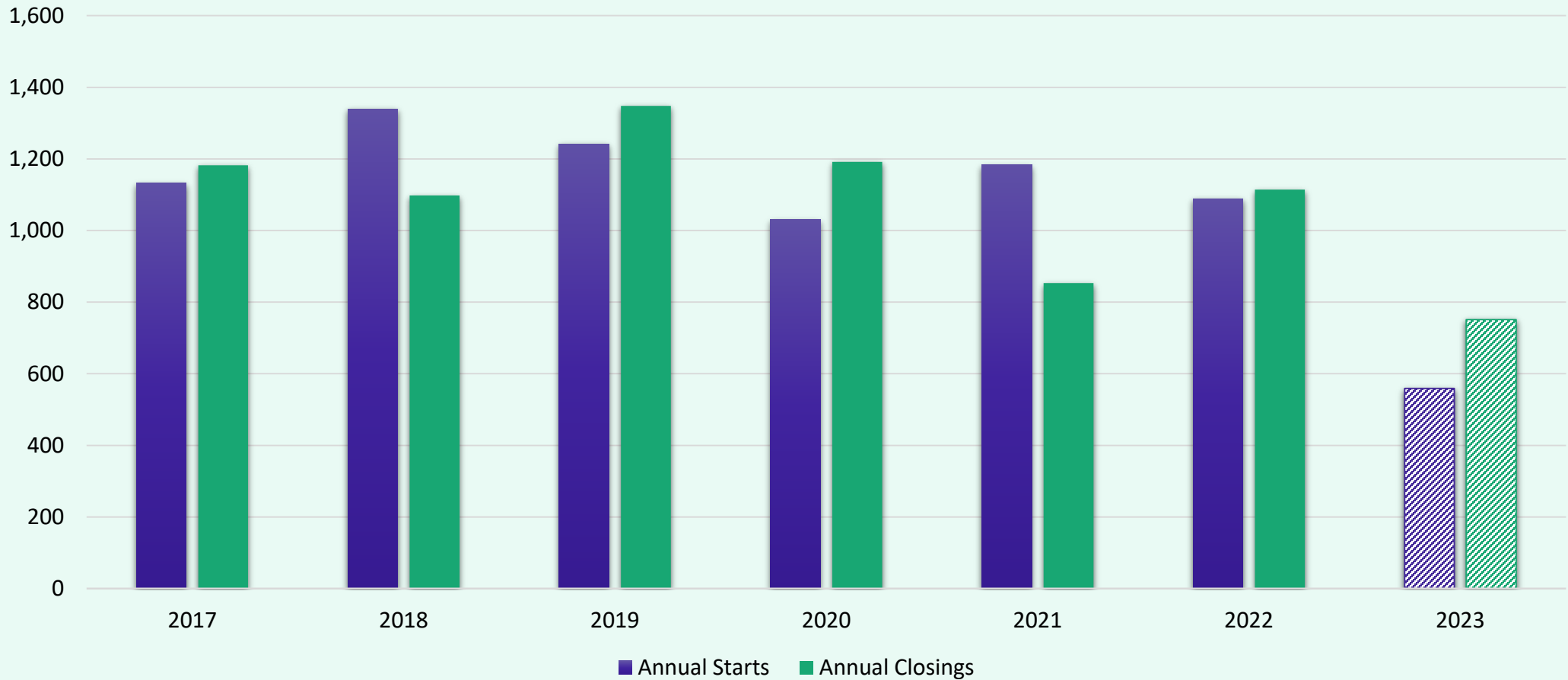
ISD Ranked by Annual Closings – 3Q23

Rank	District Name	Annual Starts	Annual Closings	Inventory	VDL	Future
1	NORTHWEST ISD	3,365	3,396	2,005	3,293	40,872
2	DENTON ISD	2,721	3,323	1,419	3,707	27,751
3	PROSPER ISD	2,727	2,781	2,192	3,372	16,642
4	PRINCETON ISD	2,372	2,631	1,244	3,150	7,374
5	MCKINNEY ISD	1,573	1,873	895	3,154	11,995
6	EAGLE MT-SAGINAW ISD	2,120	1,823	1,099	1,725	14,577
7	AUBREY ISD	1,135	1,617	545	813	6,074
8	CROWLEY ISD	1,462	1,613	702	2,002	14,945
9	FORNEY ISD	1,713	1,491	1,100	3,728	18,942
10	CRANDALL ISD	796	1,479	441	2,409	16,485
11	FRISCO ISD	855	1,435	644	1,776	8,547
12	ROYSE CITY ISD	1,118	1,416	788	1,756	7,727
13	DALLAS ISD	1,207	1,363	1,553	1,704	5,593
14	ROCKWALL ISD	940	1,269	719	2,872	10,023
15	MANSFIELD ISD	865	1,254	669	2,258	5,273
16	MELISSA ISD	1,228	1,204	830	1,038	2,961
17	ANNA ISD	1,020	1,142	781	1,643	7,355
18	CELINA ISD	876	1,122	701	1,902	35,606
19	LEWISVILLE ISD	765	1,051	665	561	1,602*
20	WYLIE ISD	612	964	435	939	2,100

* Based on additional housing research by Zonda Education



District New Home Starts and Closings by Quarter



Starts	2017	2018	2019	2020	2021	2022	2023
1Q	286	252	317	267	254	263	252
2Q	284	366	273	280	319	346	235
3Q	301	483	372	245	359	274	72
4Q	262	239	280	239	252	206	
Total	1,133	1,340	1,242	1,031	1,184	1,089	559

Closings	2017	2018	2019	2020	2021	2022	2023
1Q	340	185	265	303	214	205	382
2Q	304	307	341	272	203	325	241
3Q	295	327	372	300	211	284	128
4Q	243	279	370	317	225	300	
Total	1,182	1,098	1,348	1,192	853	1,114	751

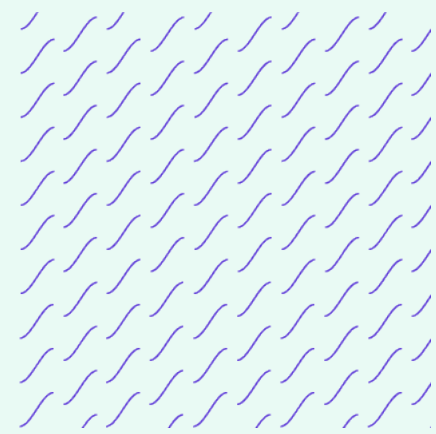


District Housing Overview by Elementary Zone

Elementary	Annual Starts	Quarter Starts	Annual Closings	Quarter Closings	Under Const.	Inventory	Vacant Dev. Lots	Future
BLUEBONNET	19	0	114	2	11	12	33	127
BRIDLEWOOD	0	0	1	0	1	1	2	0
CAMEY	0	0	1	1	0	9	0	0
CASTLE HILLS	17	0	2	0	23	23	21	0
CREEKSIDE	0	0	0	0	0	0	0	16
DEGAN	0	0	18	1	29	42	4	0
DONALD	0	0	1	0	0	0	0	0
ETHRIDGE	0	0	0	0	0	0	1	4
FLOWER MOUND	149	45	154	24	89	122	46	0
FOREST VISTA	0	0	0	0	0	0	0	54
HERITAGE	16	1	49	7	6	6	5	69
HIGHLAND VILLAGE	1	0	2	0	0	0	0	0
INDEPENDENCE	94	1	77	17	19	95	61	0
INDIAN CREEK	54	6	80	9	18	33	25	61
LAKELAND	0	0	0	0	0	0	0	52
LEWISVILLE	0	0	8	0	0	0	0	83
LIBERTY	27	1	39	8	12	18	9	112
MCAULIFFE	0	0	0	0	0	0	9	0
MEMORIAL	231	6	242	30	95	164	106	96
MILL STREET	1	0	18	0	0	0	0	12
MORNINGSIDE	56	3	13	13	9	43	24	74
OLD SETTLERS	4	0	9	1	2	3	8	4
OWEN	2	0	5	0	0	0	23	0
PRAIRIE TRAIL	0	0	0	0	0	0	0	141
ROCKBROOK	9	0	47	7	0	0	0	138
SOUTHRIDGE	14	0	25	0	13	36	25	0
TIMBER CREEK	0	0	0	0	0	0	0	15
TOM HICKS	20	3	35	8	31	51	145	303
VALLEY RIDGE	45	0	111	0	0	1	0	232
WELLINGTON	6	6	0	0	6	6	14	9
GRAND TOTAL	765	72	1,051	128	364	665	561	1,602

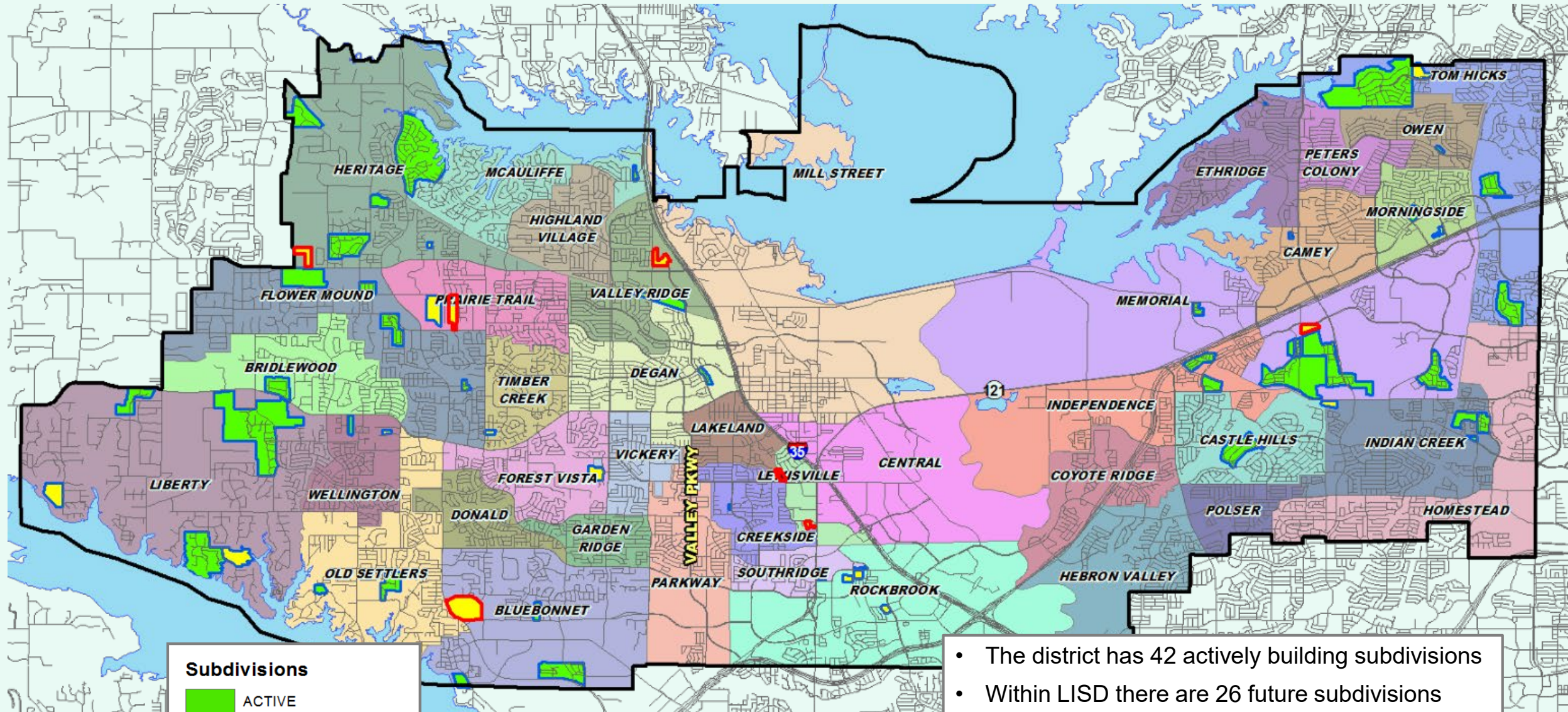
- Highest activity in the category
- Second highest activity in the category
- Third highest activity in the category

* Does **NOT** include age restricted communities
 ** Only elementary zones with activity are shown





District Housing Overview



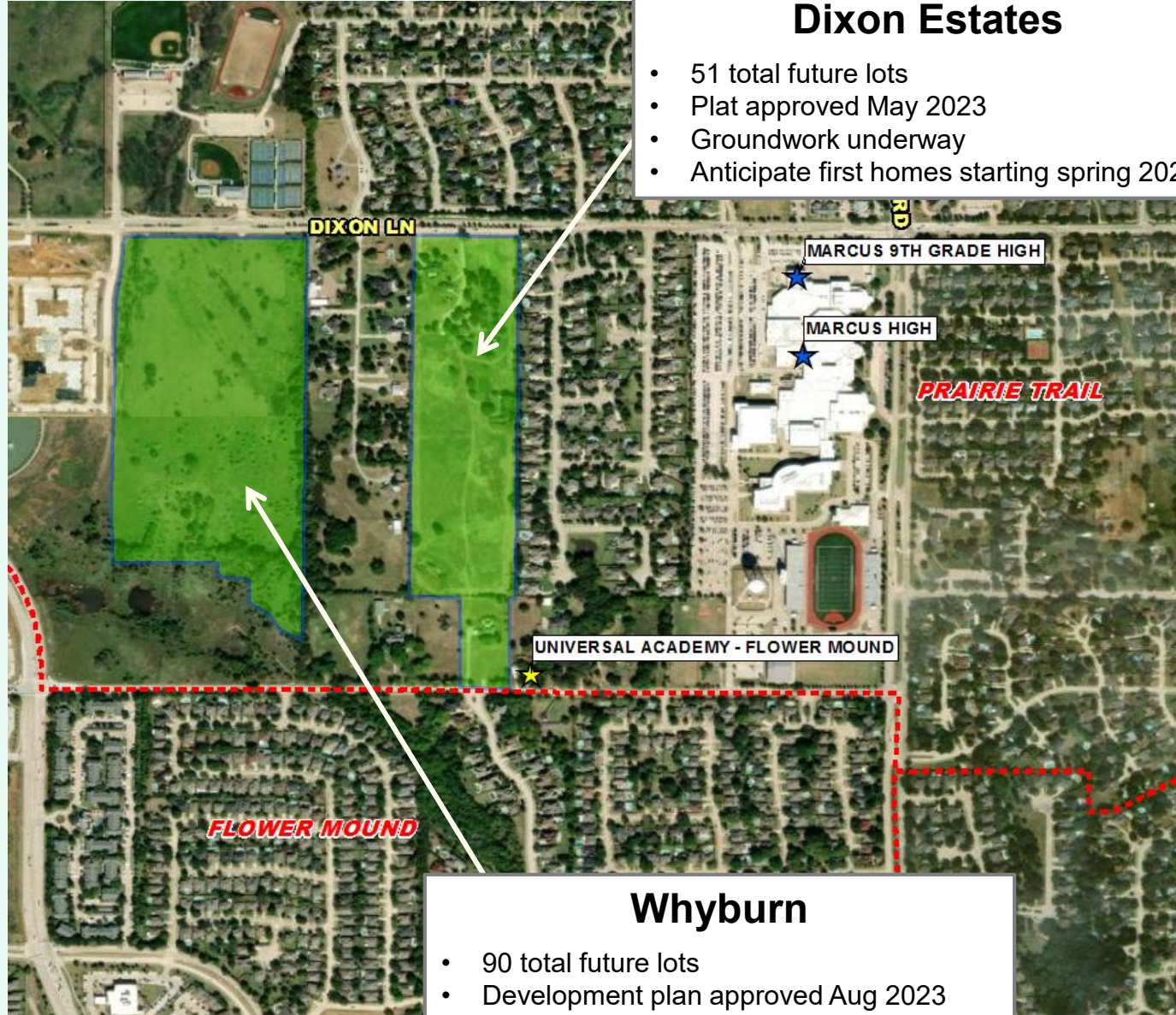
Subdivisions

- ACTIVE
- FUTURE
- Groundwork Underway

- The district has 42 actively building subdivisions
- Within LISD there are 26 future subdivisions
- Ground work is underway on nearly 640 lots within 8 subdivisions across the district



Residential Activity



Dixon Estates

- 51 total future lots
- Plat approved May 2023
- Groundwork underway
- Anticipate first homes starting spring 2023

Whyburn

- 90 total future lots
- Development plan approved Aug 2023
- Plat under review



October 2023

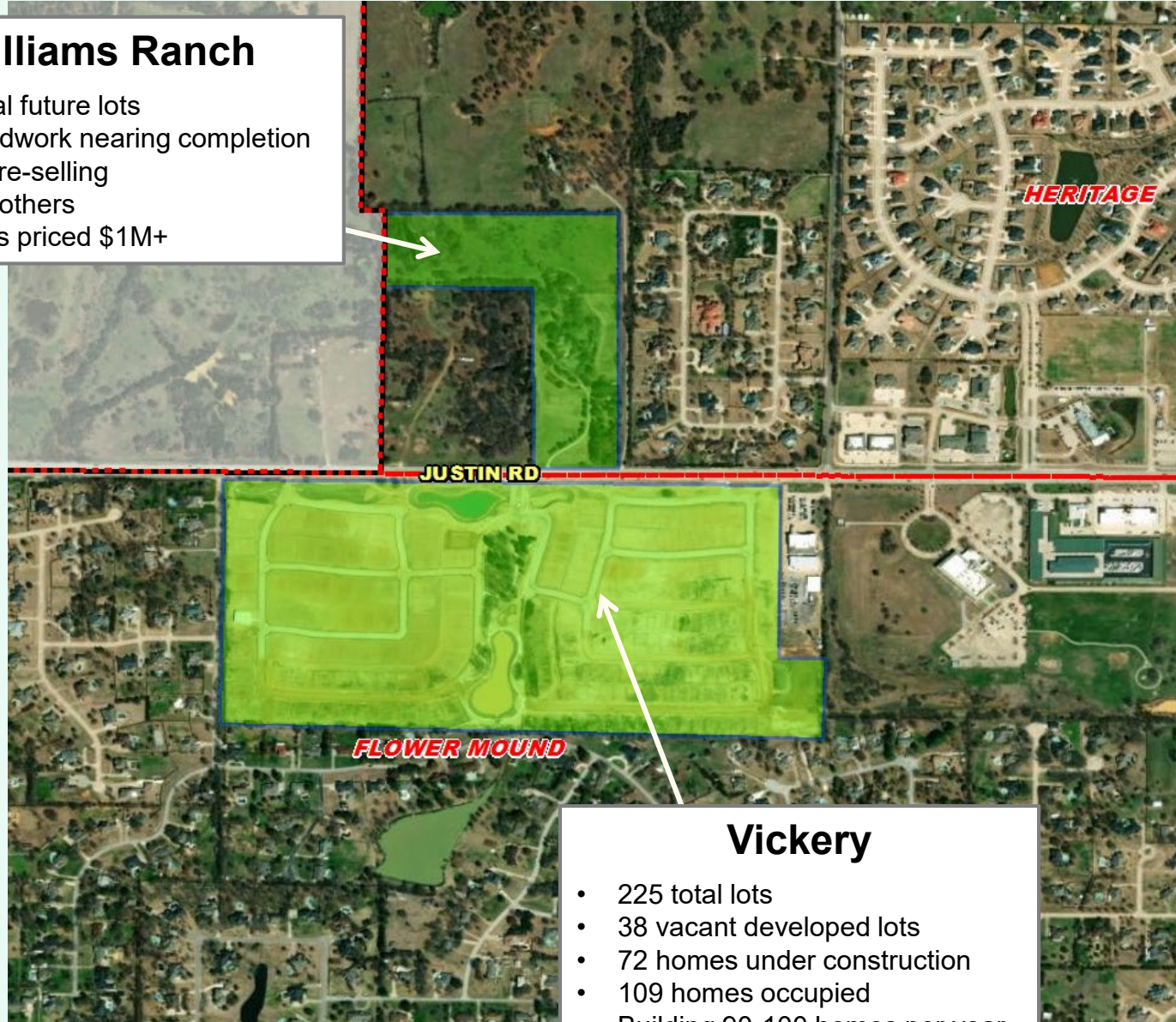




Residential Activity

Williams Ranch

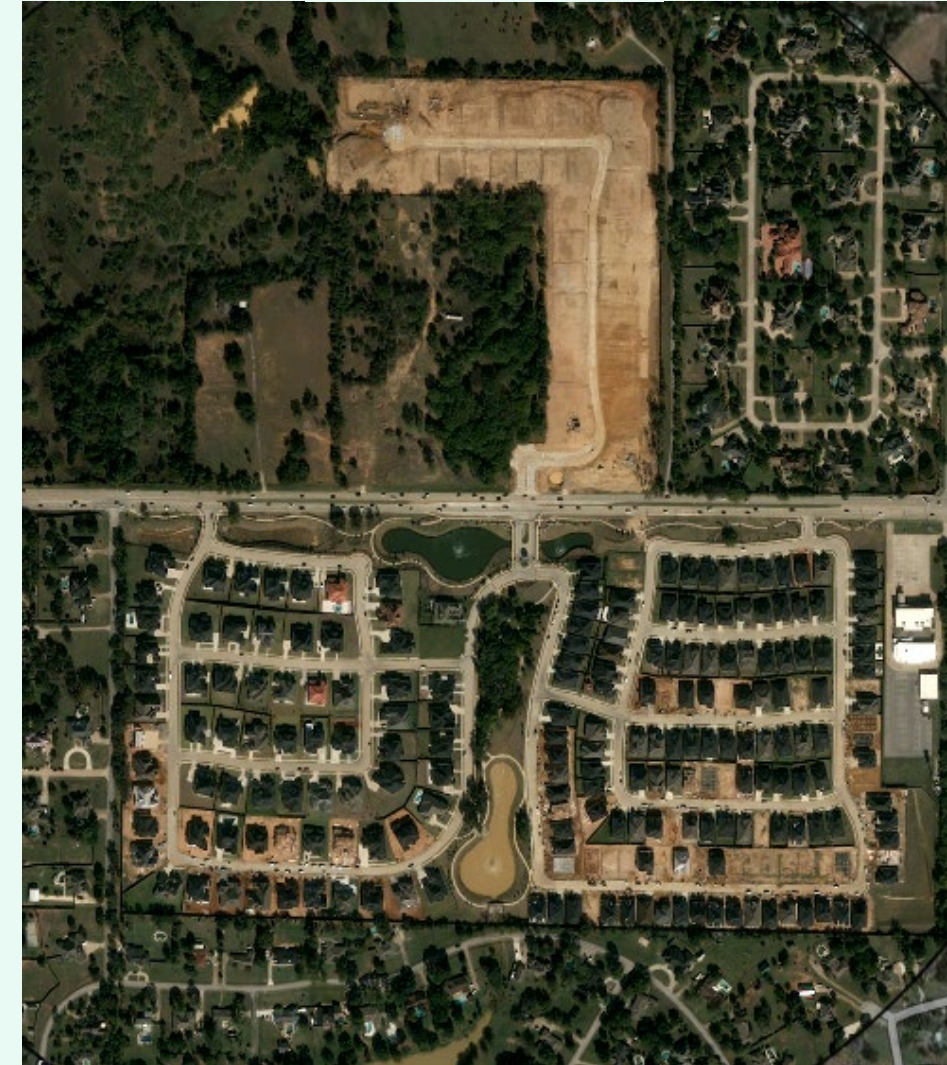
- 30 total future lots
- Groundwork nearing completion
- Lots pre-selling
- Toll Brothers
- Homes priced \$1M+



Vickery

- 225 total lots
- 38 vacant developed lots
- 72 homes under construction
- 109 homes occupied
- Building 90-100 homes per year
- Current student yield: 0.651

November 2023

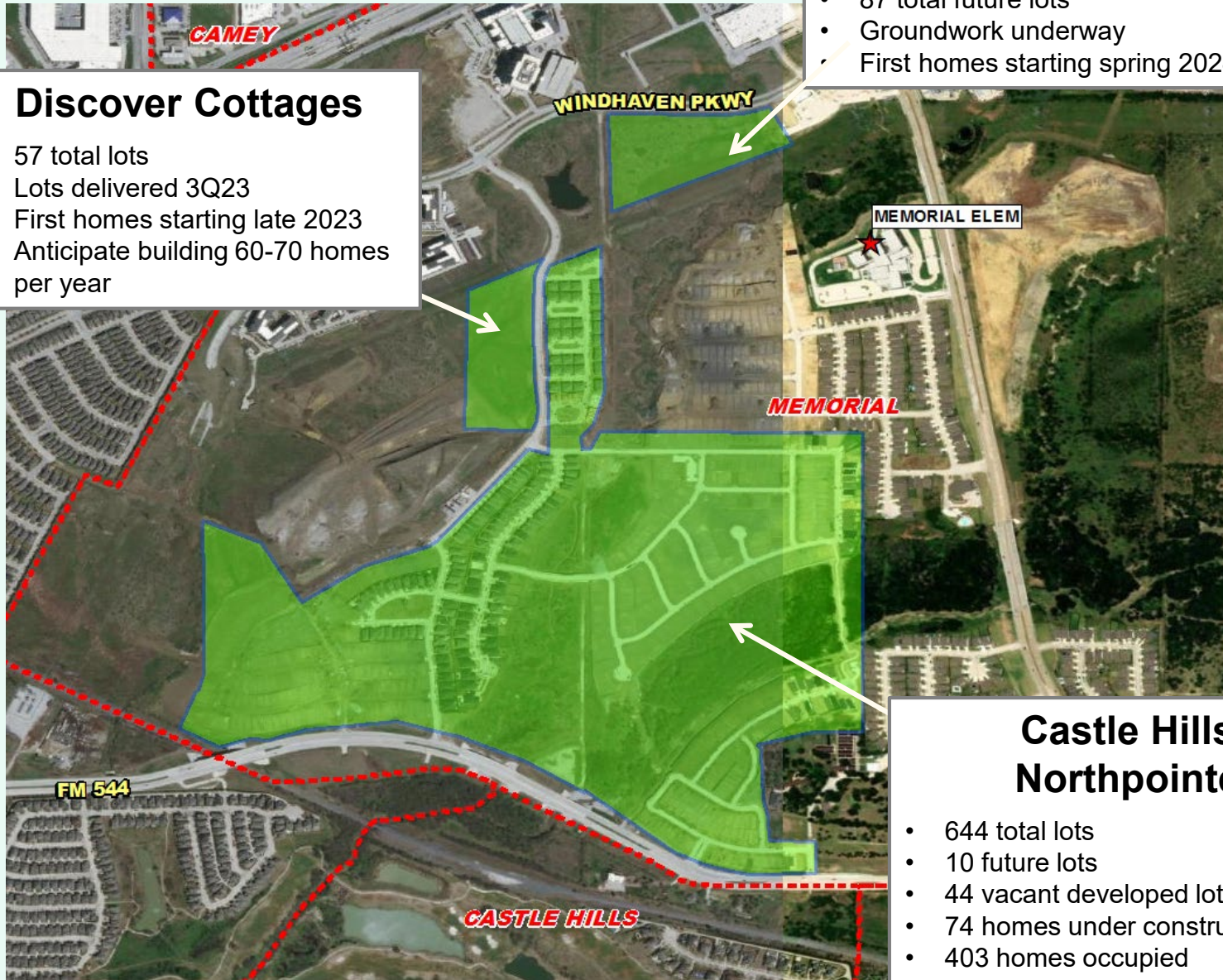




Residential Activity

Discover Cottages

- 57 total lots
- Lots delivered 3Q23
- First homes starting late 2023
- Anticipate building 60-70 homes per year



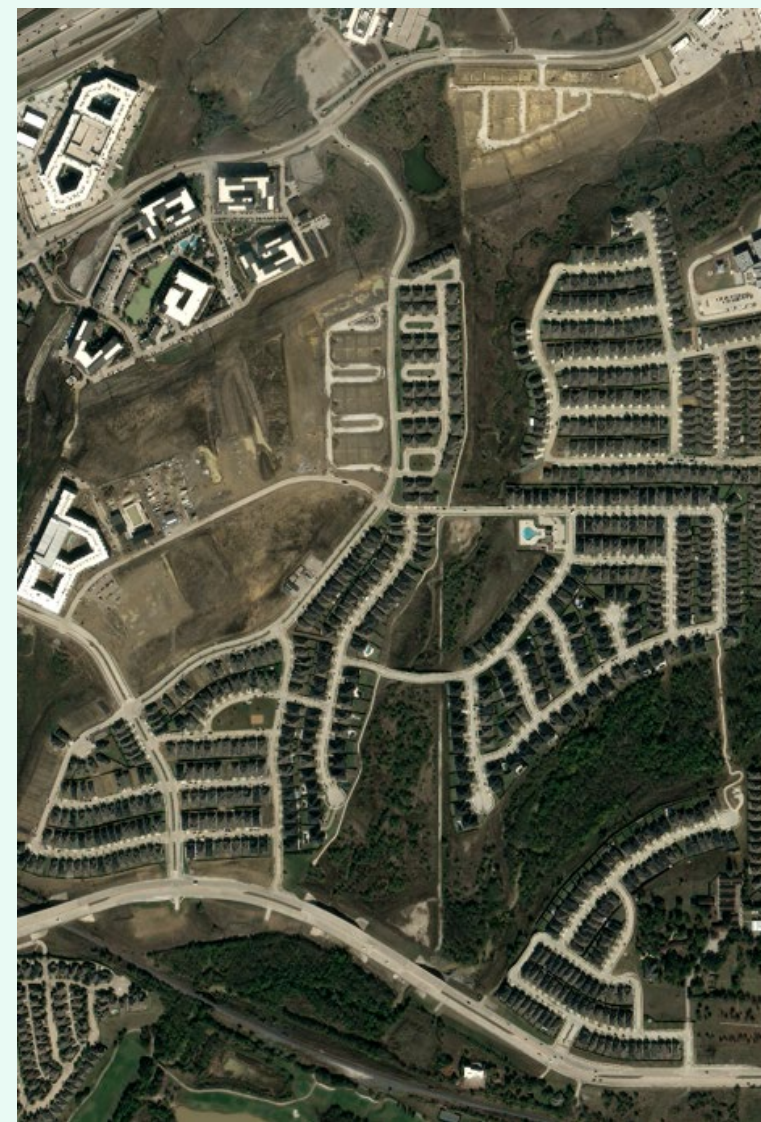
Windhaven Townhomes

- 87 total future lots
- Groundwork underway
- First homes starting spring 2024

Castle Hills Northpointe

- 644 total lots
- 10 future lots
- 44 vacant developed lots
- 74 homes under construction
- 403 homes occupied
- Building 100-150 homes per year
- Current student yield: 0.245

October 2023

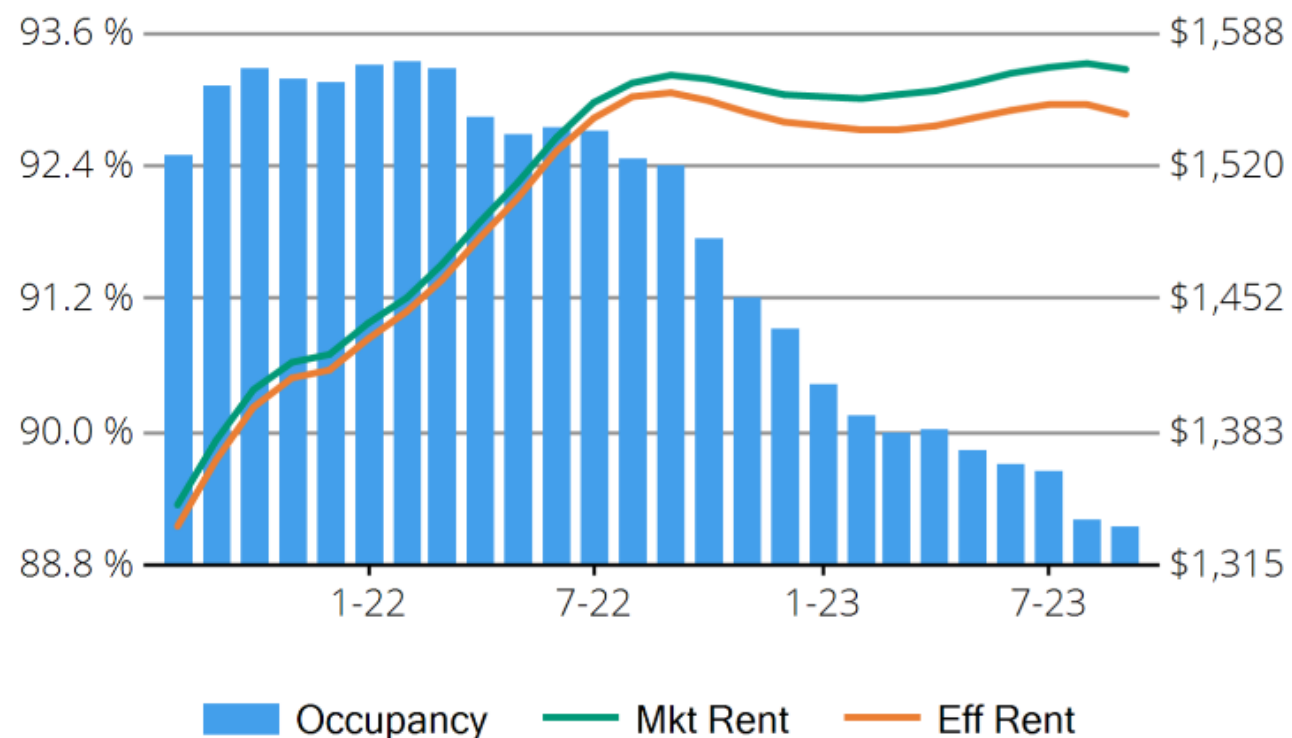




Stabilized and Lease-up Properties*

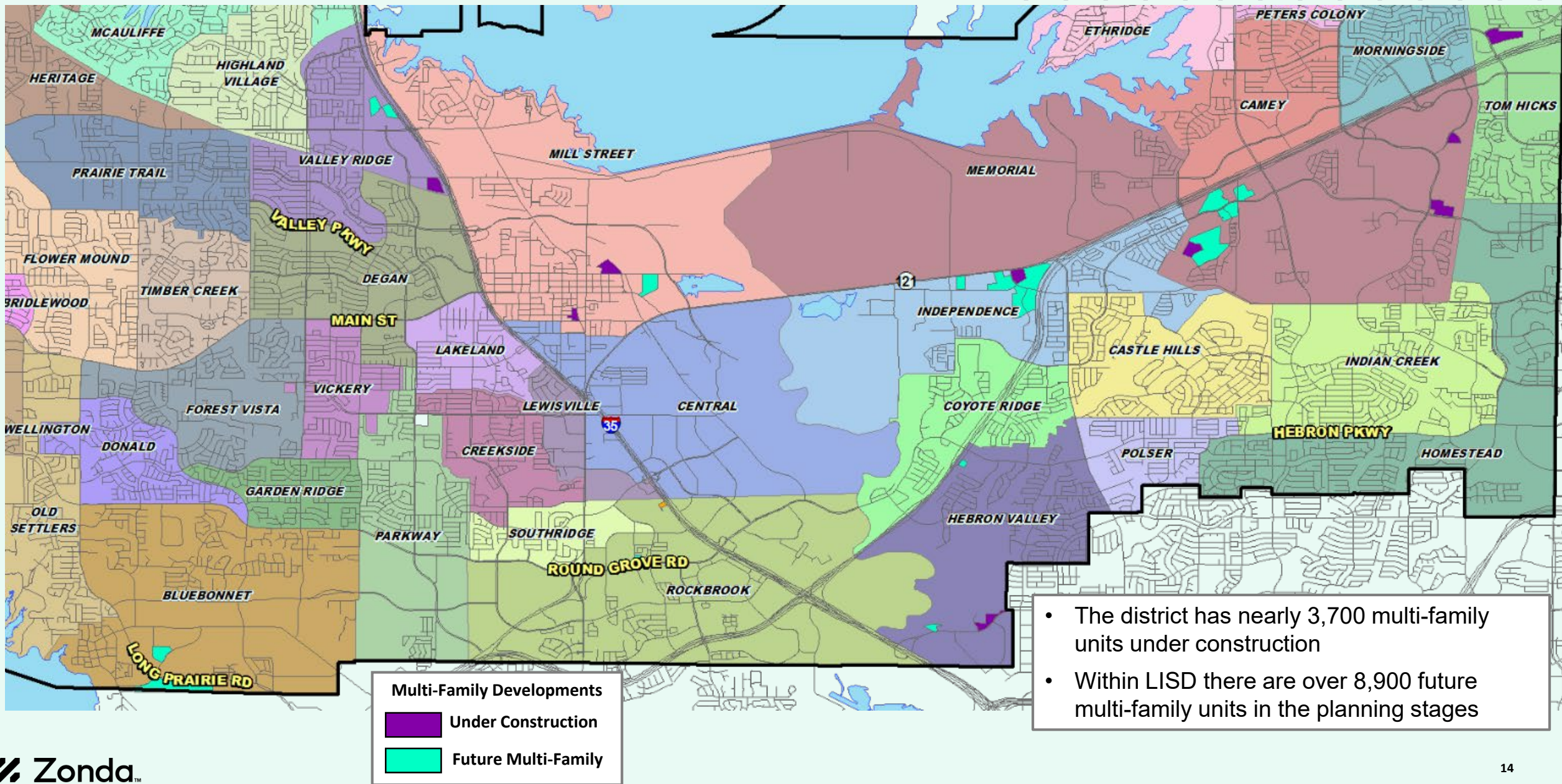
Conventional Properties	Sep 2023	Annual Change
Occupancy	89.1	-3.5%
Unit Change	32,805	
Units Absorbed (Annual)	3,705	
Average Size (SF)	874	+0.2%
Asking Rent	\$1,569	+0.3%
Asking Rent per SF	\$1.79	+0.0%
Effective Rent	\$1,546	-0.6%
Effective Rent per SF	\$1.77	-0.9%
% Offering Concessions	23%	+161.3%
Avg. Concession Package	5.4%	+14.7%

Dallas/Fort Worth, TX





District Multi-Family Overview



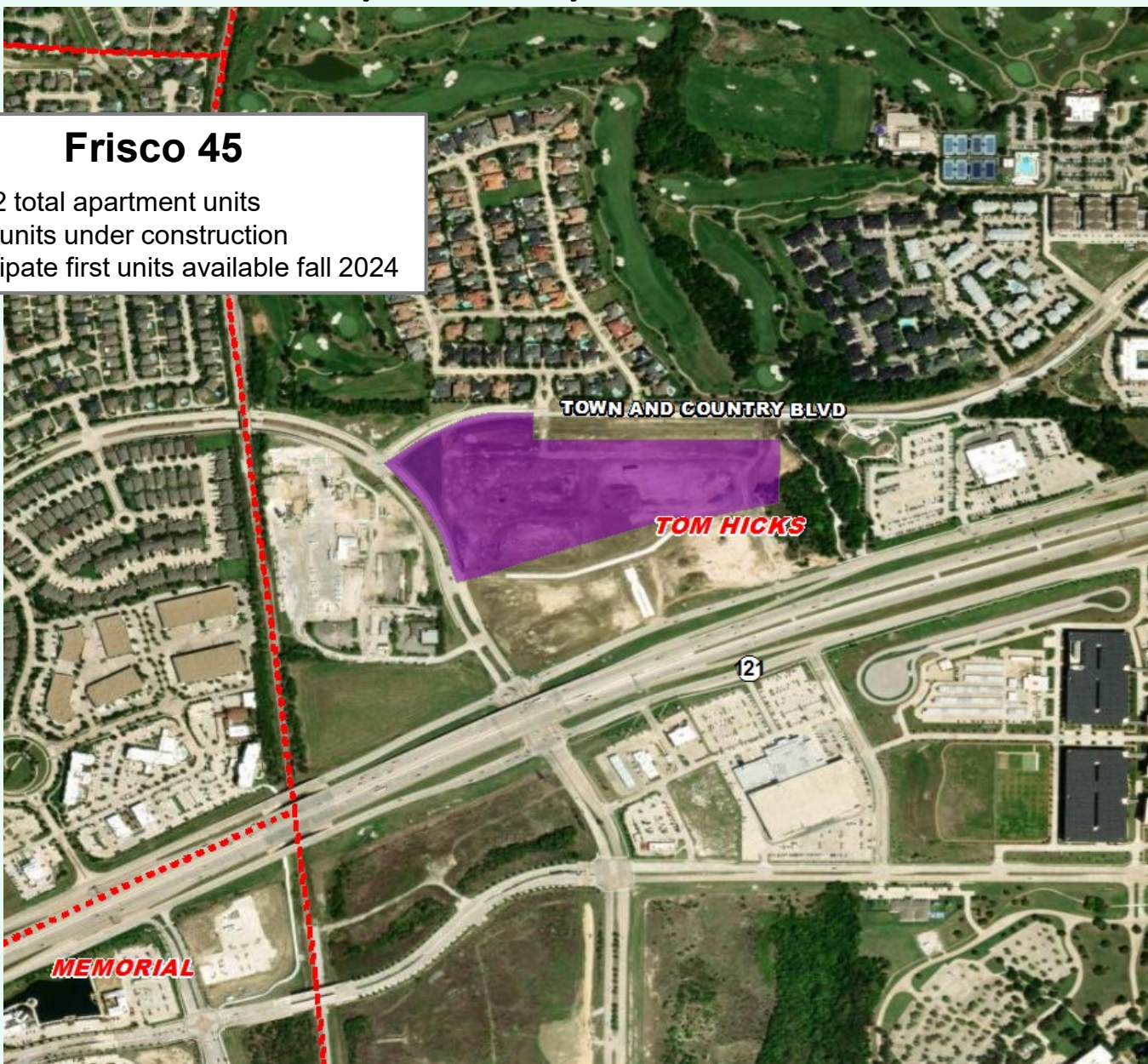
- The district has nearly 3,700 multi-family units under construction
- Within LISD there are over 8,900 future multi-family units in the planning stages



Multifamily Activity

Frisco 45

- 1,092 total apartment units
- First units under construction
- Anticipate first units available fall 2024

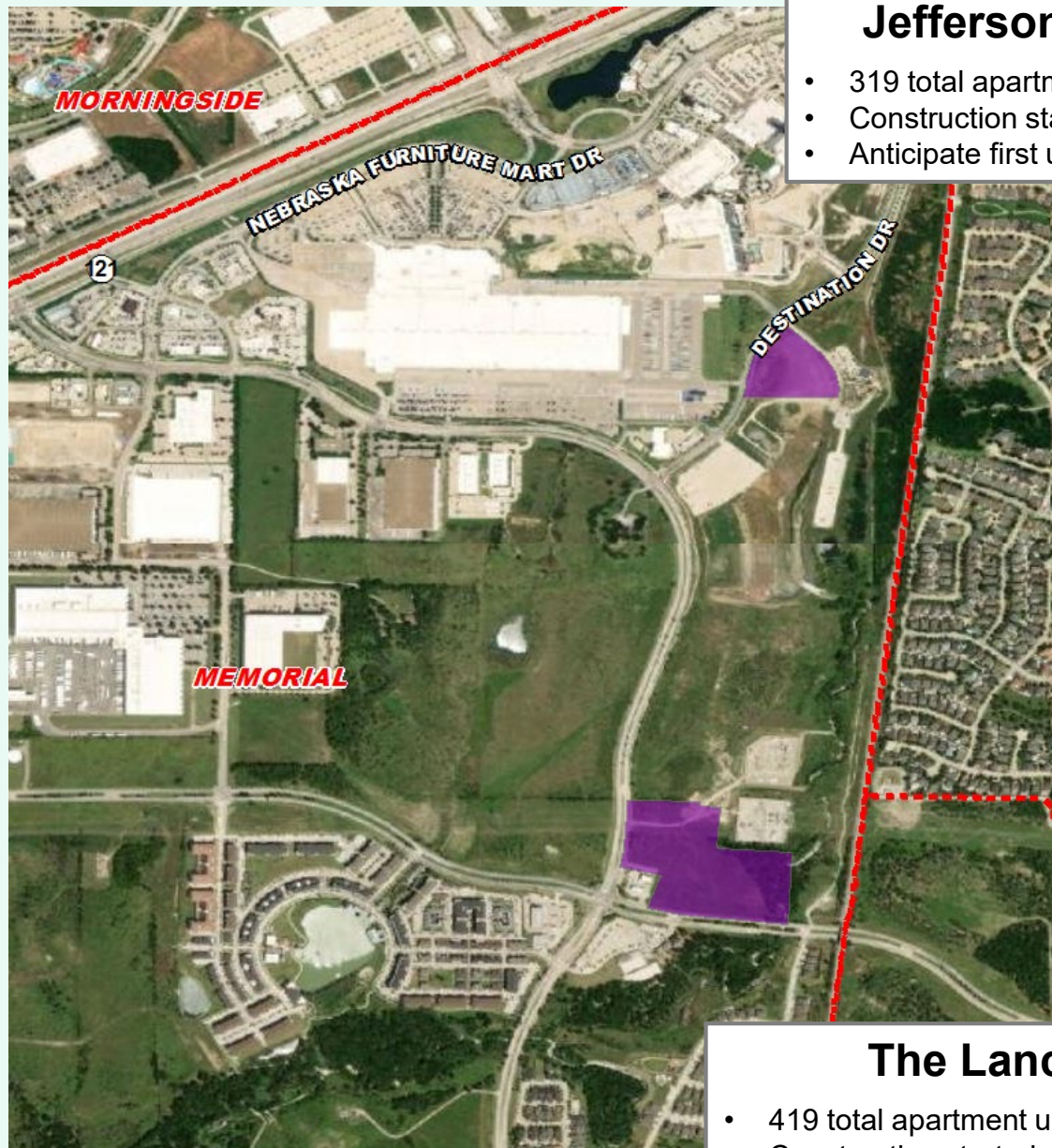


October 2023





Multifamily Activity



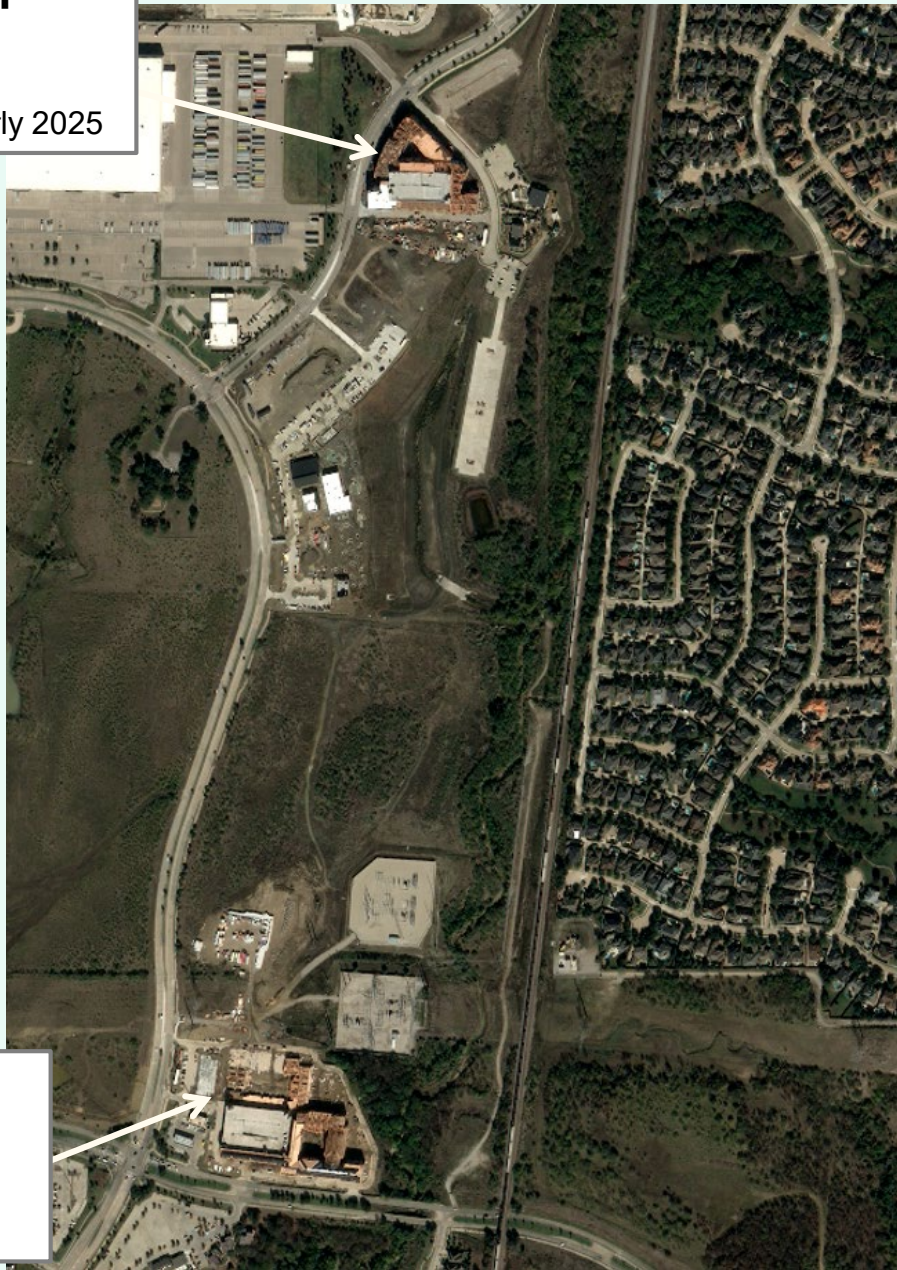
Jefferson Grandscape

- 319 total apartment units
- Construction started fall 2022
- Anticipate first units available early 2025

The Lancaster

- 419 total apartment units
- Construction started spring 2023
- Anticipate first units available late 2024

October 2023





Multifamily Activity



October 2023



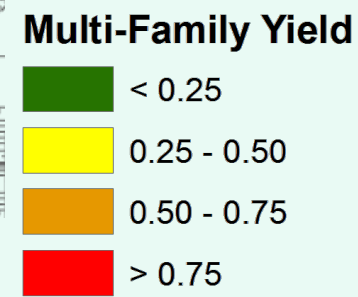
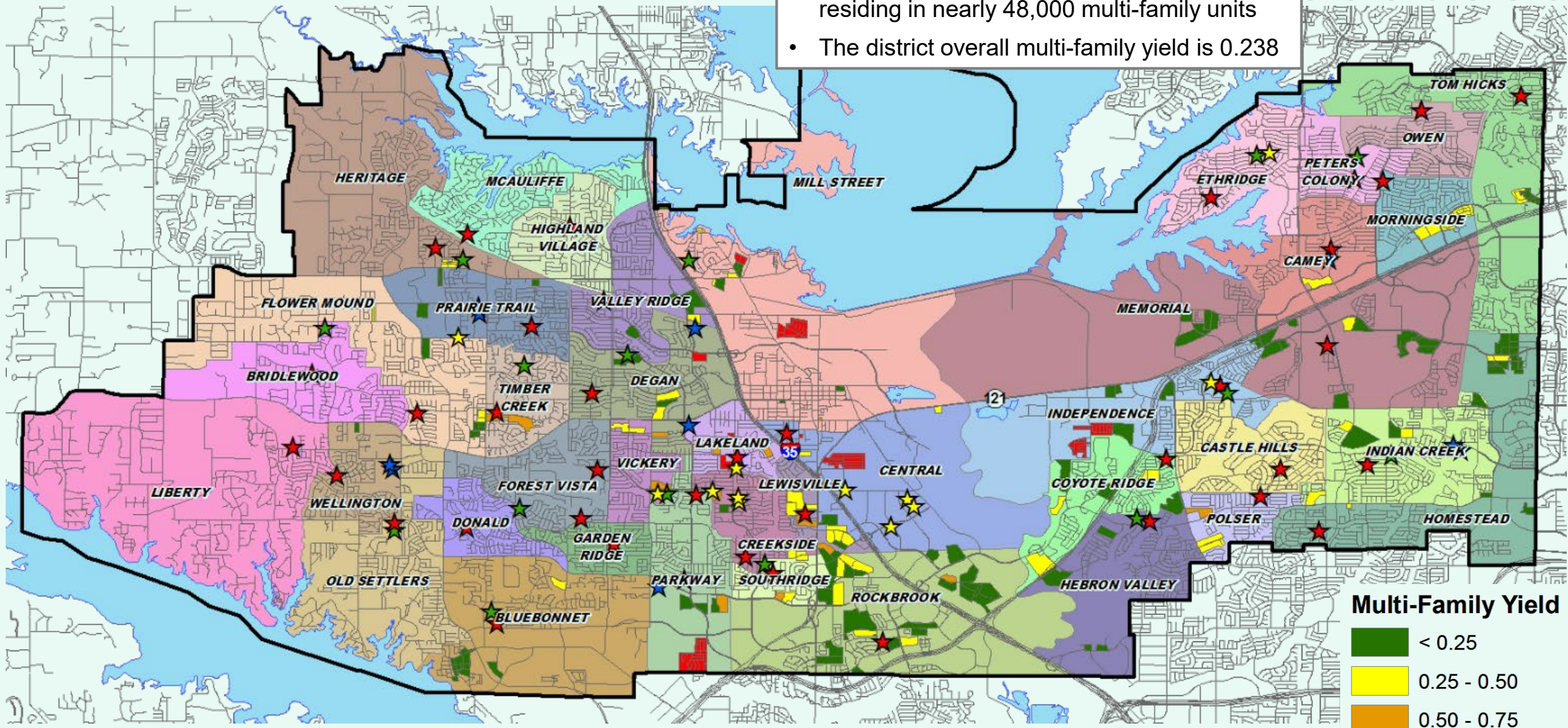
Discovery at the Realm Tapestry Apartments

- 364 total apartment units
- Construction started fall 2022
- Anticipate first units available summer 2024



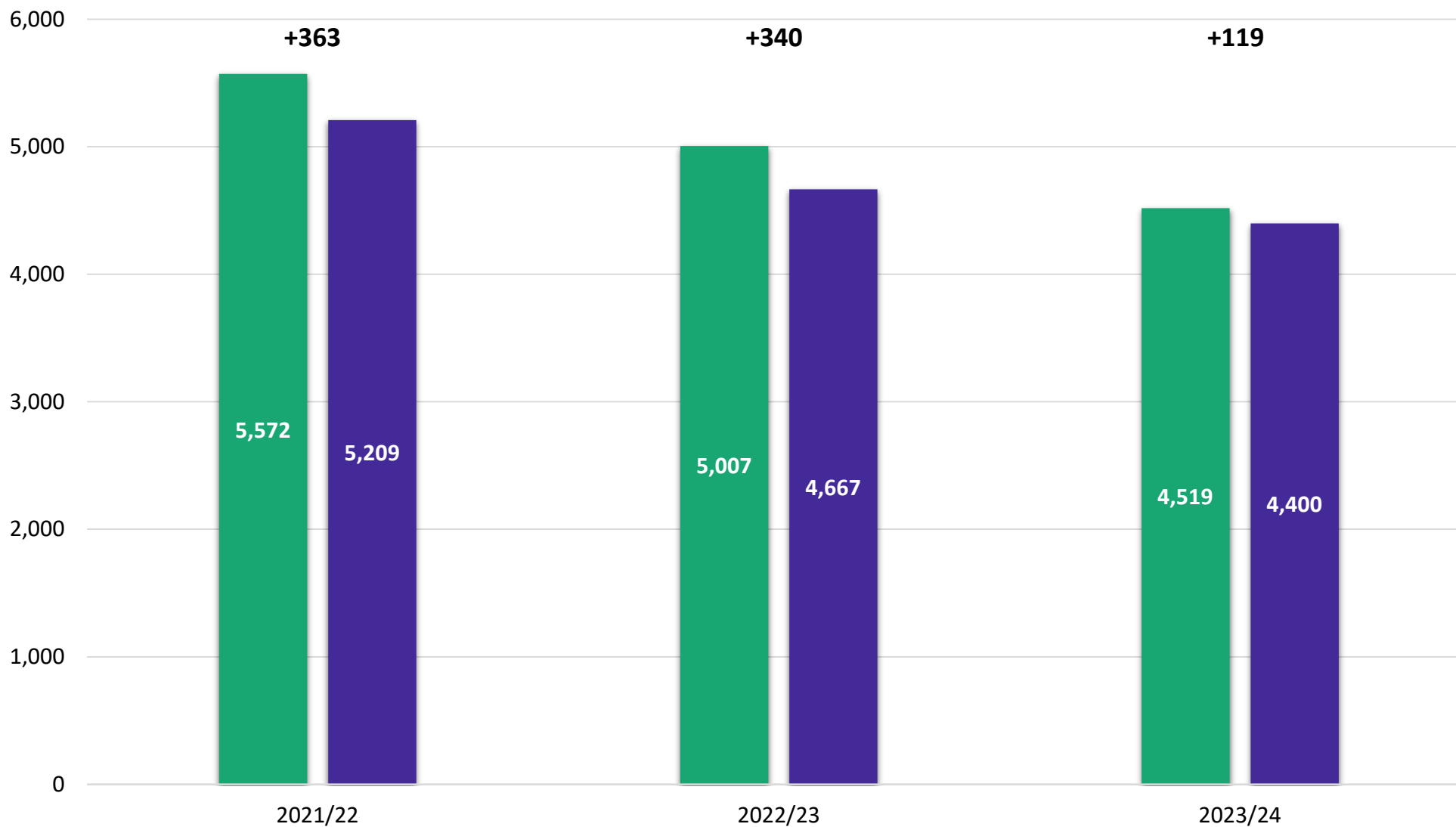
Multi-Family Yield Analysis

- There are nearly 11,500 students currently residing in nearly 48,000 multi-family units
- The district overall multi-family yield is 0.238





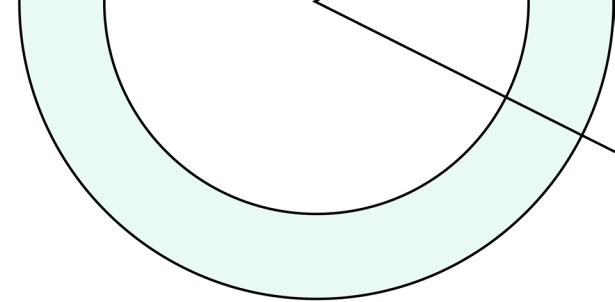
Newcomers and Leavers



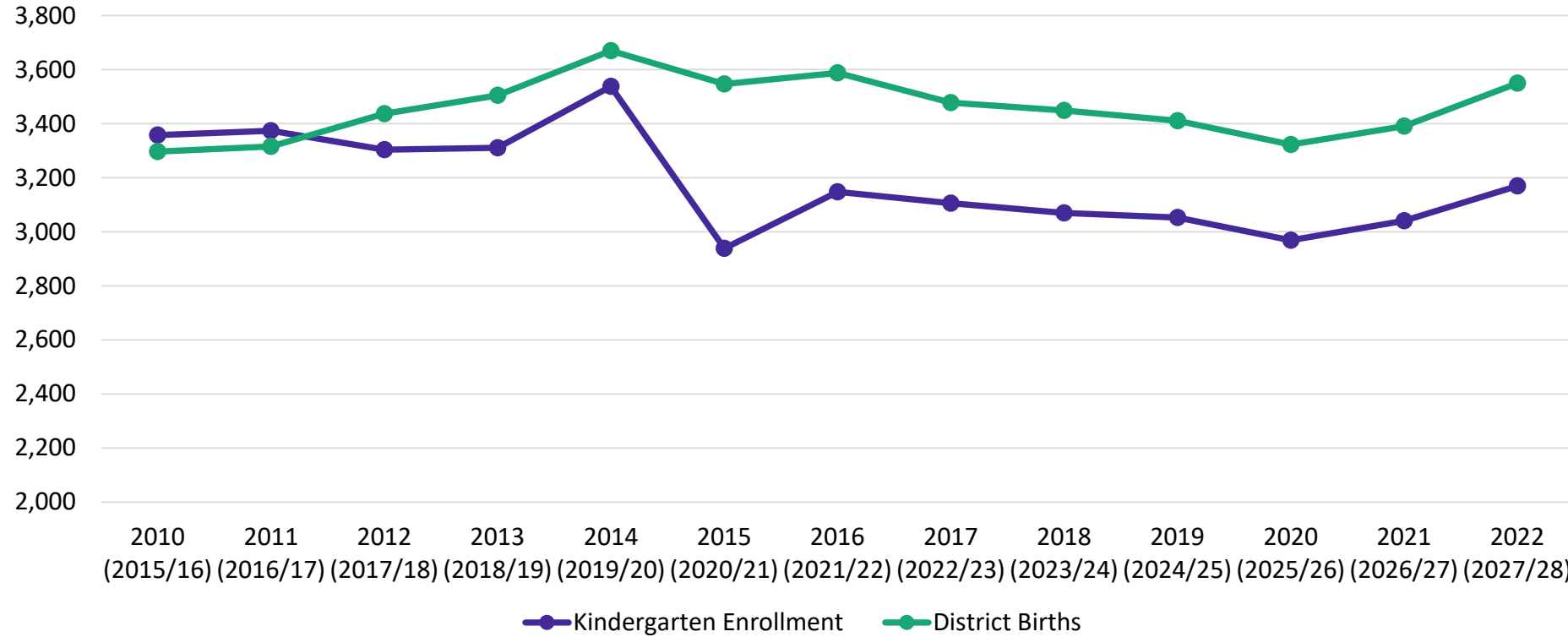
■ Newcomers ■ Leavers



Birth Rate Analysis



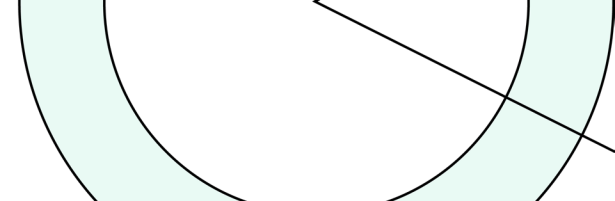
Lewisville KG Enroll vs. District Births



	District Births	Kindergarten Enrollment	Ratio
2010 (2015/16)	3,297	3,358	1.019
2011 (2016/17)	3,316	3,374	1.017
2012 (2017/18)	3,437	3,304	0.961
2013 (2018/19)	3,505	3,311	0.945
2014 (2019/20)	3,670	3,538	0.964
2015 (2020/21)	3,547	2,939	0.829
2016 (2021/22)	3,588	3,148	0.877
2017 (2022/23)	3,478	3,106	0.893
2018 (2023/24)	3,449	3,070	0.890
2019 (2024/25)	3,411	3,053	0.895
2020 (2025/26)	3,323	2,969	0.893
2021 (2026/27)	3,391	3,041	0.897
2022 (2027/28)	3,550	3,170	0.893



Ten Year Forecast by Grade Level



Year (OCT)	EE	PK	K	1st	2nd	3rd	4th	5th	6th	7th	8th	9th	10th	11th	12th	Totals	Total Growth	% Growth
2019/20	238	1,650	3,538	3,412	3,497	3,495	3,576	3,806	3,875	3,933	3,982	4,456	4,317	4,258	4,156	52,189		
2020/21	233	926	2,939	3,345	3,227	3,332	3,422	3,474	3,732	3,850	3,943	4,252	4,353	4,178	4,204	49,410	-2,779	-5.3%
2021/22	0	1,239	3,148	3,219	3,357	3,321	3,343	3,422	3,591	3,764	3,905	4,311	4,183	4,156	4,122	49,081	-329	-0.7%
2022/23	196	1,187	3,106	3,295	3,306	3,419	3,414	3,386	3,569	3,650	3,804	4,224	4,117	4,002	4,013	48,688	-393	-0.8%
2023/24	156	1,219	3,070	3,225	3,337	3,347	3,528	3,390	3,440	3,621	3,688	4,085	4,139	4,044	4,067	48,356	-332	-0.7%
2024/25	156	1,147	3,053	3,193	3,290	3,388	3,438	3,537	3,474	3,480	3,658	3,968	4,002	4,018	3,990	47,792	-565	-1.2%
2025/26	156	1,113	2,969	3,197	3,236	3,325	3,472	3,442	3,620	3,506	3,522	3,961	3,860	3,893	3,967	47,239	-553	-1.2%
2026/27	156	1,122	3,041	3,106	3,253	3,282	3,402	3,468	3,531	3,676	3,542	3,814	3,845	3,768	3,851	46,857	-381	-0.8%
2027/28	156	1,172	3,170	3,178	3,157	3,298	3,348	3,410	3,556	3,570	3,725	3,828	3,711	3,740	3,713	46,732	-126	-0.3%
2028/29	156	1,140	3,072	3,318	3,229	3,195	3,366	3,341	3,492	3,597	3,611	4,029	3,723	3,618	3,688	46,575	-157	-0.3%
2029/30	156	1,152	3,124	3,215	3,370	3,271	3,248	3,370	3,425	3,539	3,639	3,894	3,913	3,624	3,572	46,512	-63	-0.1%
2030/31	156	1,148	3,101	3,267	3,263	3,411	3,323	3,250	3,455	3,468	3,579	3,920	3,780	3,811	3,575	46,507	-5	0.0%
2031/32	156	1,118	3,025	3,247	3,319	3,302	3,467	3,322	3,337	3,498	3,514	3,862	3,806	3,681	3,759	46,413	-94	-0.2%
2032/33	156	1,108	2,996	3,166	3,298	3,359	3,358	3,474	3,406	3,381	3,541	3,796	3,748	3,707	3,632	46,126	-287	-0.6%
2033/34	156	1,095	2,960	3,136	3,214	3,337	3,414	3,360	3,556	3,447	3,425	3,818	3,680	3,650	3,657	45,905	-221	-0.5%

Yellow box = largest grade per year
Green box = second largest grade per year



Ten Year Forecast by Elementary Campus

CAMPUS	2020 Maximum Capacity	Functional Capacity	ENROLLMENT PROJECTSONS											
			2022/23	Fall 2023/24	2024/25	2025/26	2026/27	2027/28	2028/29	2029/30	2030/31	2031/32	2032/33	2033/34
BLUEBONNET ELEMENTARY	770	574	636	673	703	700	714	718	711	694	692	694	704	712
BRIDLEWOOD ELEMENTARY	880	792	570	586	593	570	548	538	511	512	514	518	526	525
CAMEY ELEMENTARY	770	693	489	439	429	399	388	391	371	382	385	386	383	374
CASTLE HILLS ELEMENTARY	748	673	705	654	624	583	576	554	551	558	557	561	557	540
CENTRAL ELEMENTARY	836	752	520	543	528	509	512	518	533	532	536	535	526	510
COYOTE RIDGE ELEMENTARY	814	733	532	518	513	491	477	468	467	467	464	467	471	472
CREEKSIDE ELEMENTARY	660	594	422	383	376	345	349	349	350	359	362	363	360	351
DEGAN ELEMENTARY	726	653	443	402	399	388	380	402	395	405	409	409	405	395
DONALD ELEMENTARY	880	792	567	571	569	566	557	573	572	565	564	560	559	552
ETHRIDGE ELEMENTARY	506	455	359	343	336	335	321	326	327	346	353	362	364	354
FLOWER MOUND ELEMENTARY	726	653	578	569	584	563	534	514	509	510	510	516	526	528
FOREST VISTA ELEMENTARY	968	871	573	566	573	571	568	573	560	571	575	575	570	554
GARDEN RIDGE ELEMENTARY	594	535	378	346	339	327	317	310	319	325	329	334	333	323
HEBRON VALLEY ELEMENTARY	836	752	411	405	379	380	384	393	403	417	424	425	423	412
HERITAGE ELEMENTARY	1,012	911	509	504	518	521	529	535	546	560	561	551	541	526
HICKS ELEMENTARY	792	713	618	593	578	555	536	557	561	577	589	592	588	570
HIGHLAND VILLAGE ELEMENTARY	572	515	360	373	376	379	386	382	383	377	368	360	354	344
HOMESTEAD ELEMENTARY	726	653	455	458	437	422	421	410	402	410	415	425	425	419
INDEPENDENCE ELEMENTARY	990	891	798	823	780	789	802	806	781	792	799	798	798	798
INDIAN CREEK ELEMENTARY	748	673	534	540	514	523	520	520	514	512	507	504	504	504
JACKSON EARLY ED. CENTER	900	810	469	439	439	439	439	439	439	439	439	439	439	439
LAKELAND ELEMENTARY	1,034	931	614	649	611	588	583	574	578	584	584	593	593	586
LEWISVILLE ELEMENTARY	858	772	508	491	496	480	483	466	467	474	476	484	485	477
LIBERTY ELEMENTARY	990	891	587	583	585	557	539	558	535	545	541	532	531	518
LLC ELEMENTARY SCHOOL		0	16	11	11	11	11	11	11	11	11	11	11	11
MCAULIFFE ELEMENTARY	616	554	539	524	513	504	504	490	481	479	475	477	474	471
MEMORIAL ELEMENTARY	880	720	630	730	847	940	984	1,048	1,081	1,067	1,059	1,063	1,082	1,101
MILL ST. ELEMENTARY	880	792	610	630	644	645	639	644	634	629	621	620	617	613
MORNINGSIDE ELEMENTARY	550	495	363	345	340	341	334	331	335	337	338	348	351	349
OLD SETTLERS ELEMENTARY	990	891	477	468	456	447	443	437	452	448	446	452	459	461
OWEN ELEMENTARY	770	693	263	262	256	259	255	252	247	260	268	273	279	282
PARKWAY ELEMENTARY	748	673	552	605	612	624	622	618	611	604	600	592	596	596
PETERS COLONY ELEMENTARY	814	733	533	559	538	535	538	553	566	565	565	562	556	539
POLSER ELEMENTARY	792	713	476	500	503	530	544	558	564	563	560	549	537	520
PRAIRIE TRAIL ELEMENTARY	968	871	643	652	653	655	666	659	659	664	667	669	661	651
ROCKBROOK ELEMENTARY	990	891	646	592	584	553	552	567	554	568	578	582	571	557
SOUTHTRIDGE ELEMENTARY	704	634	623	613	625	618	615	590	588	586	581	585	579	579
TIMBER CREEK ELEMENTARY	572	515	430	437	435	425	419	422	427	432	433	434	429	418
VALLEY RIDGE ELEMENTARY	946	851	523	548	572	560	568	575	585	564	557	559	561	564
VICKERY ELEMENTARY	946	851	621	624	627	600	598	605	601	586	576	572	570	567
WELLINGTON ELEMENTARY	1,012	911	729	721	706	683	672	656	636	631	629	624	624	621
ELEMENTARY TOTALS	33,064	29,565	21,309	21,272	21,202	20,910	20,830	20,889	20,817	20,906	20,919	20,956	20,921	20,683
Elementary Total Change			260	-37	-70	-292	-80	59	-72	89	13	37	-35	-238
Elementary Percent Change			1.24%	-0.17%	-0.33%	-1.38%	-0.38%	0.28%	-0.34%	0.43%	0.06%	0.18%	-0.17%	-1.14%



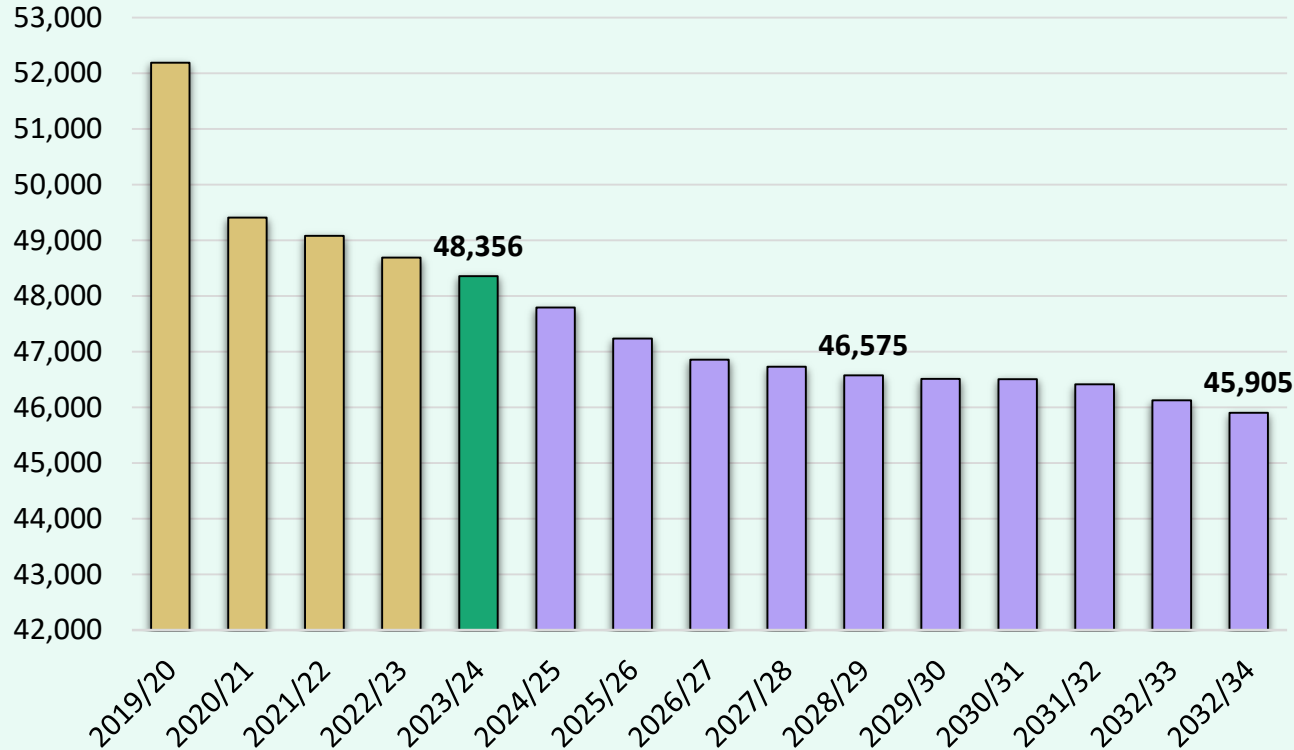
Ten Year Forecast by Secondary Campus

CAMPUS	2020 Maximum Capacity	Functional Capacity	ENROLLMENT PROJECTIONS											
			2022/23	Fall 2023/24	2024/25	2025/26	2026/27	2027/28	2028/29	2029/30	2030/31	2031/32	2032/33	2033/34
ARBOR CREEK MIDDLE SCHOOL	1,050	945	890	894	920	914	960	919	912	874	871	846	862	883
BRIARHILL MIDDLE SCHOOL	1,150	1,035	798	794	778	776	757	751	723	723	710	728	735	731
CREEK VALLEY MIDDLE SCHOOL	1,100	990	593	564	576	567	558	547	539	540	543	557	565	579
DELAY MIDDLE SCHOOL	1,300	1,170	694	627	594	616	614	636	608	611	590	586	582	592
DOWNING MIDDLE SCHOOL	1,100	990	511	503	523	559	592	632	624	583	553	508	505	511
DURHAM MIDDLE SCHOOL	1,100	990	716	647	613	632	628	658	655	643	610	576	595	606
FORESTWOOD MIDDLE SCHOOL	1,400	1,260	890	919	909	896	897	906	896	866	851	832	833	857
GRIFFIN MIDDLE SCHOOL	1,250	1,200	756	721	717	744	815	840	875	919	980	1,007	992	996
HEDRICK MIDDLE SCHOOL	1,225	1,103	852	871	879	851	856	856	833	847	876	877	845	825
HUFFINES MIDDLE SCHOOL	1,050	945	675	617	616	628	624	614	584	592	596	600	589	592
KILLIAN MIDDLE SCHOOL	1,425	1,283	1,009	945	952	948	926	924	904	881	842	806	821	833
LAKEVIEW MIDDLE SCHOOL	990	891	425	419	414	399	411	402	435	418	429	415	423	433
LAMAR MIDDLE SCHOOL	1,075	968	756	728	685	674	688	727	713	704	671	661	667	682
MCKAMY MIDDLE SCHOOL	1,150	1,035	802	825	778	763	768	754	743	722	712	679	675	678
SHADOW RIDGE MIDDLE SCHOOL	1,000	900	647	642	625	648	622	652	623	647	635	638	606	597
LLC MIDDLE SCHOOL			9	33	33	33	33	33	33	33	33	33	33	33
MIDDLE SCHOOL TOTALS	17,365	15,705	11,023	10,749	10,612	10,648	10,749	10,851	10,700	10,603	10,502	10,349	10,328	10,428
Middle School Total Change			-237	-274	-137	36	101	102	-151	-97	-101	-153	-21	100
Middle School Percent Change			-2.10%	-2.49%	-1.27%	0.34%	0.95%	0.95%	-1.39%	-0.91%	-0.95%	-1.46%	-0.20%	0.97%
FLOWER MOUND 9th GRADE CAMPUS	783	705	853	808	861	853	845	786	861	815	805	807	783	760
HEBRON 9th GRADE CAMPUS	1,512	1,361	934	878	840	866	796	886	846	808	822	808	747	780
MARCUS 9th GRADE CAMPUS	837	753	740	728	736	719	692	686	751	717	757	697	662	678
FLOWER MOUND HIGH SCHOOL	3,780	3,402	2,681	2,633	2,513	2,497	2,485	2,516	2,440	2,450	2,420	2,439	2,386	2,354
HEBRON HIGH SCHOOL	3,564	3,208	2,739	2,796	2,771	2,663	2,633	2,535	2,583	2,566	2,572	2,512	2,474	2,413
LEWISVILLE HIGH SCHOOL	2,862	2,576	1,988	1,963	2,012	2,007	1,863	1,784	1,754	1,692	1,758	1,770	1,715	1,709
LEWISVILLE BEN HARMON HS	1,458	1,312	1,200	1,173	1,126	1,143	1,108	1,057	1,109	1,119	1,095	1,106	1,083	1,071
LEWISVILLE KILLOUGH	1,122	1,010	1,061	1,023	930	823	822	806	831	830	795	774	791	813
MARCUS HIGH SCHOOL	3,645	3,281	2,256	2,276	2,237	2,236	2,194	2,148	2,101	2,133	2,156	2,226	2,173	2,119
THE COLONY HIGH SCHOOL	3,321	2,989	1,892	1,882	1,775	1,699	1,665	1,613	1,607	1,698	1,731	1,794	1,894	1,933
LLC HIGH SCHOOL			12	175	175	175	175	175	175	175	175	175	175	175
HIGH SCHOOL TOTALS	22,884	20,597	16,356	16,335	15,976	15,681	15,278	14,992	15,058	15,003	15,086	15,108	14,883	14,805
High School Total Change			-416	-21	-359	-295	-403	-287	66	-55	83	22	-225	-78
High School Percent Change			-2.48%	-0.13%	-2.20%	-1.85%	-2.57%	-1.88%	0.44%	-0.37%	0.55%	0.15%	-1.49%	-0.53%
DISTRICT TOTALS	73,313	65,867	48,688	48,356	47,790	47,239	46,857	46,732	46,575	46,512	46,507	46,413	46,132	45,916
District Total Change			-393	-332	-567	-551	-381	-126	-157	-63	-5	-94	-281	-216
District Percent Change			-0.80%	-0.68%	-1.17%	-1.15%	-0.81%	-0.27%	-0.34%	-0.14%	-0.01%	-0.20%	-0.61%	-0.47%



Key Takeaways

Enrollment Forecast



- Lewisville ISD enrollment declined 332 students this fall
- New home starts within LISD declined in the 3rd quarter due to constrained lot availability
- After a record year in 2022, new home closings in LISD are expected to return to 2021 levels
- There are roughly 560 lots currently available to build on across the district with an additional 1,600 future lots in various planning stages
- Groundwork is underway on an additional 640 lots across the district
- There are nearly 3,700 multi-family units under construction across the district that will impact enrollment in the next 1-2 years
- The district is forecasted to enroll more than 46,500 students in 2028/29, and nearly 46,000 students in 2033/34