

Housing Analysis

Prepared for Lewisville ISD
By Zonda Education



2Q23

Table of Contents

Current Activity and Profile

Quarterly Activity and Inventory

Historical Housing Activity Price

Range Analysis Household

Growth Summary

Current Activity and Profile Report

Lewisville ISD

Sorted by Subdivision

Map No	Subdivision Name	Sub Area	Status	Lot Size	Price Range	Qtr Starts	Ann Starts	Qtr Clos	Ann Clos	Occ	Inventory			VDL	Future	Total
											Mod	Fin Vac	U/C			
74	Adams Estates	DNW-FlwrMnd	BO 3Q17	83'-151'	\$500-\$899	0	0	0	0	29	0	0	0	0	0	29
285	Arbor Creek (Carrollton)	DNW-Carrlltn	BO 2Q01	50'-74'	\$103-\$217	0	0	0	0	313	0	0	0	0	0	313
325	Arbor Vista North	DNE-Plano	BO 4Q01	90'	\$360-\$700	0	0	0	0	38	0	0	0	0	0	38
114	Arborwood	DNW-FlwrMnd	BO 2Q03	75'-105'	\$228-\$299	0	0	0	0	70	0	0	0	0	0	70
160	Archer Addition	DNW-Lewisvl	BO 4Q20	41'	\$308-\$329	0	0	0	0	38	0	0	0	0	0	38
51	Auburn Farms	DNW-FlwrMnd	BO 4Q16	84'	\$770-\$800	0	0	0	0	16	0	0	0	0	0	16
288	Austin Hills	DNW-Carrlltn	BO 1Q18	50'	\$406-\$506	0	0	0	0	48	0	0	0	0	0	48
295	Austin Waters (Carrollton)	DNW-Carrlltn	Act 2Q07	53'	\$430-\$465	0	0	0	0	216	0	0	0	1	0	217
290	Austin Waters Townhomes	DNW-Carrlltn	BO 1Q21	30'-45'	\$286-\$485	0	0	0	0	97	0	0	0	0	0	97
275	Avondale (Carrollton)	DNW-Carrlltn	BO 3Q16	50'	\$358-\$435	0	0	0	0	65	0	0	0	0	0	65
139	Baker's Branch Estates	DNW-FlwrMnd	BO 1Q02	85'-117'	\$280-\$286	0	0	0	0	117	0	0	0	0	0	117
12	Bella Lago (Flower Mound)	DNW-FlwrMnd	BO 2Q15	150'-152'	\$800-\$1075	0	0	0	0	73	0	0	0	0	0	73
130	Bella Strada	DNW-FlwrMnd	BO 2Q16	43'-70'	\$426-\$562	0	0	0	0	46	0	0	0	0	0	46
154	Bellaire Addition	DNW-Lewisvl	BO 4Q00	65'	\$145-\$161	0	0	0	0	27	0	0	0	0	0	27
165	Belle Creek Village	DNW-FlwrMnd	BO 2Q13	83'	\$384-\$474	0	0	0	0	69	0	0	0	0	0	69
72	Bradford Park (Flower Mound)	DNW-FlwrMnd	Act 1Q19	50'	\$634-\$897	0	15	8	44	152	1	1	2	0	0	156
298	Brentwood Court Townhomes	DNW-Colony	Act 1Q20	24'	\$485-\$485	0	10	5	10	20	0	0	0	23	0	43
41	Bridlewood	DNW-FlwrMnd	BO 3Q08	70'-208'	\$213-\$850	0	0	0	0	1,304	0	0	0	0	0	1,304
49	Brighton Place	DNW-FlwrMnd	BO 1Q21	149'	\$750-\$800	0	0	0	0	3	0	0	0	0	0	3
153	Brittian Estates	DNW-Lewisvl	BO 4Q03	100'	\$450-\$570	0	0	0	0	13	0	0	0	0	0	13
198	Brookside Addition	DNW-Lewisvl	BO 3Q16	50'	\$269-\$339	0	0	0	0	40	0	0	0	0	0	40
141	Brookstone Addition	DNW-FlwrMnd	BO 4Q03	80'	\$240-\$347	0	0	0	0	78	0	0	0	0	0	78
203	Brownstones on West Walters	DNW-Lewisvl	BO 3Q22	20'	\$400-\$450	0	0	0	8	19	0	0	0	0	0	19
107	Bryn Mar Estates	DNW-FlwrMnd	BO 4Q02	90'	\$330-\$366	0	0	0	0	74	0	0	0	0	0	74
113	Caldwell Court (Flower Mound)	DNW-FlwrMnd	Future	72'	\$0-\$0	0	0	0	0	0	0	0	0	0	15	15
284	Camey Place	DNW-Colony	Act 3Q22	45'	\$584-\$724	31	54	0	0	0	1	6	47	26	0	80

Current Activity and Profile Report

Lewisville ISD

Sorted by Subdivision

Map No	Subdivision Name	Sub Area	Status	Lot Size	Price Range	Qtr Starts	Ann Starts	Qtr Clos	Ann Clos	Occ	Inventory			VDL	Future	Total
											Mod	Fin Vac	U/C			
47	Camryn Downs	DNW-DOak	BO 4Q16	100'	\$750-\$800	0	0	0	0	8	0	0	0	0	0	8
50	Canterbury Row	DNW-FlwrMnd	BO 2Q10	100'	\$450-\$600	0	0	0	0	8	0	0	0	0	0	8
196	Carrington Village	DNW-Lewisvl	BO 2Q14	35'	\$199-\$273	0	0	0	0	183	0	0	0	0	0	183
301	Cascades at the Legends	DNW-Colony	BO 1Q10	50'-55'	\$149-\$194	0	0	0	0	108	0	0	0	0	0	108
303	Cascades at the Legends -	DNW-Colony	BO 1Q10	25'-33'	\$127-\$161	0	0	0	0	184	0	0	0	0	0	184
254	Castle Hills (Lewisville)	DNW-Lewisvl	Act 2Q98	134'	\$435-\$2000	7	19	0	13	3,860	0	0	23	21	0	3,904
272	Castle Hills/Carrollton 10	DNW-Carrltn	Act 4Q20	41'-50'	\$448-\$931	3	53	15	145	267	0	2	14	0	0	283
258	Castle Hills/Chateaux at the	DNW-Lewisvl	BO 2Q18	28'	\$390-\$455	0	0	0	0	19	0	0	0	0	0	19
266	Castle Hills/Discover Cottages	DNW-Lewisvl	Future	37'	\$0-\$0	0	0	0	0	0	0	0	0	0	57	57
263	Castle Hills/Northpointe	DNW-Lewisvl	Act 3Q19	41'-80'	\$617-\$850	48	104	0	24	124	2	3	81	47	10	267
268	Castle Hills/Northpointe	DNW-Lewisvl	BO 1Q22	36'	\$420-\$451	0	0	0	0	94	0	0	0	0	0	94
264	Castle Hills/Retreat	DNW-Lewisvl	BO 2Q14	42'	\$380-\$410	0	0	0	0	20	0	0	0	0	0	20
245	Castle Hills/Southwest	DNW-Carrltn	BO 1Q21	41'-50'	\$377-\$603	0	0	0	0	313	0	0	0	0	0	313
261	Castle Hills/Village Townhomes	DNW-Lewisvl	BO 2Q07	25'	\$425-\$440	0	0	0	0	8	0	0	0	0	0	8
273	Castle Hills/Windhaven	DNW-Lewisvl	Future	35'	\$0-\$0	0	0	0	0	0	0	0	0	0	86	86
79	Castlewood (Highland Village)	DNW-HighVil	BO 4Q10	68'-120'	\$241-\$510	0	0	0	0	377	0	0	0	0	0	377
132	Cedar Creek Addition (Flower	DNW-FlwrMnd	BO 3Q06	50'	\$160-\$237	0	0	0	0	67	0	0	0	0	0	67
60	Chapel Creek Estates	DNW-CCanyon	BO 2Q00	200'	\$260-\$393	0	0	0	0	4	0	0	0	0	0	4
75	Chapel Hill Addition	DNW-HighVil	BO 4Q08	65'-85'	\$255-\$330	0	0	0	0	224	0	0	0	0	0	224
62	Chapel Springs (Highland	DNW-HighVil	BO 4Q14	65'-80'	\$326-\$500	0	0	0	0	119	0	0	0	0	0	119
310	Charles Ridge	DNW-Carrltn	Act 1Q23	24'	\$400-\$550	0	0	0	0	0	0	0	0	24	0	24
176	Chase Oaks Addition	DNW-Lewisvl	BO 1Q14	42'-53'	\$159-\$237	0	0	0	0	130	0	0	0	0	0	130
177	Chase Oaks Addition	DNW-Lewisvl	BO 1Q12	25'	\$174-\$231	0	0	0	0	13	0	0	0	0	0	13
10	Chateau du Lac	DNW-FlwrMnd	Act 3Q00	187'-240'	\$1250-\$3000	0	2	0	2	54	0	0	2	5	0	61
115	Chaucer Estates	DNW-FlwrMnd	BO 1Q00	68'-85'	\$206-\$254	0	0	0	0	170	0	0	0	0	0	170
1	Chimney Rock (Flower Mound)	DNW-FlwrMnd	BO 3Q14	150'	\$759-\$1350	0	0	0	0	49	0	0	0	0	0	49

Current Activity and Profile Report

Lewisville ISD

Sorted by Subdivision

Map No	Subdivision Name	Sub Area	Status	Lot Size	Price Range	Qtr Starts	Ann Starts	Qtr Clos	Ann Clos	Occ	Inventory			VDL	Future	Total
											Mod	Fin Vac	U/C			
83	Churchill Crossing	DNW-FlwrMnd	BO 1Q00	70'-100'	\$171-\$230	0	0	0	0	195	0	0	0	0	0	195
14	CMP Family Addition	DNW-FlwrMnd	BO 2Q20	307'	\$2000-\$4000	0	0	0	0	3	0	0	0	0	0	3
199	Coppell Greens	DNW-Coppell	BO 2Q03	48'-65'	\$184-\$237	0	0	0	0	222	0	0	0	0	0	222
40	Copper Woods	DNW-CCanyon	BO 2Q08	458'	\$420-\$905	0	0	0	0	14	0	0	0	0	0	14
159	Copperas Branch Addition	DNW-HighVil	Act 3Q03	80'	\$300-\$450	0	0	0	0	2	0	0	0	9	0	11
90	Country Meadow Addition	DNW-FlwrMnd	BO 3Q01	50'	\$152-\$197	0	0	0	0	156	0	0	0	0	0	156
231	Coyote Ridge	DNW-Carrltn	BO 3Q06	80'	\$296-\$570	0	0	0	0	358	0	0	0	0	0	358
229	Coyote Ridge/Grandview Ridge	DNW-Carrltn	BO 2Q03	60'	\$273-\$400	0	0	0	0	79	0	0	0	0	0	79
307	Creeside Addn. (Carrollton)	DNW-Carrltn	BO 1Q07	80'	\$400-\$480	0	0	0	0	116	0	0	0	0	0	116
299	Creeside at Austin Waters	DNW-Colony	BO 1Q20	50'-60'	\$427-\$606	0	0	0	0	204	0	0	0	0	0	204
149	Creeside at Heritage Park	DNW-FlwrMnd	BO 1Q22	80'	\$619-\$960	0	0	0	0	136	0	0	0	0	0	136
178	Crescent Estates Addition	DNW-Lewisvl	BO 2Q19	50'	\$355-\$455	0	0	0	0	62	0	0	0	0	0	62
11	Cross Timbers (Dbl Oak)	DNW-DOak	BO 2Q08	150'-165'	\$189-\$330	0	0	0	0	228	0	0	0	0	0	228
171	CT Simmons Addition	DNW-Lewisvl	BO 2Q05	38'	\$105-\$135	0	0	0	0	4	0	0	0	0	0	4
64	Diamond Belle Estates	DNW-FlwrMnd	BO 4Q10	80'	\$400-\$750	0	0	0	0	14	0	0	0	0	0	14
311	Diamond Creek Addition	DNW-Carrltn	BO 2Q19	146'	\$550-\$700	0	0	0	0	6	0	0	0	0	0	6
155	Diamond Hill (Lewisville)	DNW-Lewisvl	BO 2Q00	50'	\$121-\$137	0	0	0	0	151	0	0	0	0	0	151
279	Diamond Ridge	DNW-Carrltn	BO 1Q01	61'	\$107-\$190	0	0	0	0	275	0	0	0	0	0	275
99	District of Highland Village	DNW-HighVil	BO 3Q14	40'	\$282-\$355	0	0	0	0	12	0	0	0	0	0	12
91	Dixon Estates	DNW-FlwrMnd	Future	94'	\$0-\$0	0	0	0	0	0	0	0	0	0	51	51
25	Dominion Estates (Flower	DNW-FlwrMnd	BO 2Q00	150'	\$455-\$499	0	0	0	0	14	0	0	0	0	0	14
186	Dougherty Addition	DNW-Lewisvl	BO 4Q21	21'	\$300-\$400	0	0	0	0	6	0	0	0	0	0	6
143	Dove Creek (Lewisville)	DNW-Lewisvl	BO 2Q08	132'	\$300-\$600	0	0	0	0	10	0	0	0	0	0	10
140	Edgewood (Flower Mound)	DNW-FlwrMnd	BO 2Q20	65'	\$650-\$685	0	0	0	0	47	0	0	0	0	0	47
21	Emerald Bay	DNW-FlwrMnd	BO 2Q05	180'	\$610-\$650	0	0	0	0	62	0	0	0	0	0	62
142	Emerald Place	DNW-FlwrMnd	Future	80'	\$0-\$0	0	0	0	0	0	0	0	0	0	54	54

Current Activity and Profile Report

Lewisville ISD

Sorted by Subdivision

Map No	Subdivision Name	Sub Area	Status	Lot Size	Price Range	Qtr Starts	Ann Starts	Qtr Clos	Ann Clos	Occ	Inventory			VDL	Future	Total
											Mod	Fin Vac	U/C			
280	Essex Park Townhomes	DNW-Carrltn	BO 2Q22	45'	\$512-\$554	0	0	0	0	84	0	0	0	0	0	84
54	Estancia Estates	DNW-FlwrMnd	BO 4Q19	80'	\$475-\$616	0	0	0	0	53	0	0	0	0	0	53
39	Estates @ Copper Canyon, The	DNW-CCanyon	BO 2Q08	190'	\$750-\$950	0	0	0	0	26	0	0	0	0	0	26
228	Estates at Lake Vista	DNW-Coppell	BO 3Q15	52'	\$327-\$410	0	0	0	0	39	0	0	0	0	0	39
23	Estates of Double Oak	DNW-DOak	BO 2Q04	150'	\$410-\$500	0	0	0	0	46	0	0	0	0	0	46
89	Estates of Flower Mound	DNW-FlwrMnd	BO 1Q02	80'	\$244-\$293	0	0	0	0	64	0	0	0	0	0	64
236	Estates of Indian Creek	DNW-Carrltn	BO 3Q16	50'	\$365-\$424	0	0	0	0	45	0	0	0	0	0	45
17	Estuary Pointe	DNW-FlwrMnd	Future	150'	\$0-\$0	0	0	0	0	0	0	0	0	0	27	27
291	Fairwater	DNE-Frisco	BO 2Q20	65'	\$664-\$685	0	0	0	0	95	0	0	0	0	0	95
145	Fallbrook	DNW-FlwrMnd	BO 1Q04	80'	\$275-\$290	0	0	0	0	77	0	0	0	0	0	77
144	Flower Mound Oaks	DNW-FlwrMnd	BO 1Q15	80'	\$454-\$512	0	0	0	0	56	0	0	0	0	0	56
52	Flower Mound Woods	DNW-FlwrMnd	BO 4Q12	109'	\$442-\$506	0	0	0	0	44	0	0	0	0	0	44
84	Forest Park Estates	DNW-FlwrMnd	BO 2Q00	65'	\$150-\$200	0	0	0	0	106	0	0	0	0	0	106
119	Forest Vista Estates	DNW-FlwrMnd	BO 4Q22	85'	\$550-\$700	0	0	0	1	12	0	0	0	0	0	12
97	Forums Residential, The	DNW-FlwrMnd	BO 4Q08	95'	\$223-\$245	0	0	0	0	71	0	0	0	0	0	71
194	Fox Creek Estates	DNW-Lewisvl	BO 2Q01	63'-70'	\$154-\$195	0	0	0	0	155	0	0	0	0	0	155
124	Foxborough Hollow	DNW-FlwrMnd	BO 2Q00	90'	\$260-\$265	0	0	0	0	72	0	0	0	0	0	72
321	Frisco 45 Townhomes	DNE-Frisco	Act 4Q22	19'	\$400-\$500	0	0	0	0	0	0	0	0	29	0	29
156	Garden Park Place	DNW-Lewisvl	BO 1Q04	53'	\$132-\$183	0	0	0	0	99	0	0	0	0	0	99
158	Garden Ridge Addition	DNW-Lewisvl	BO 2Q01	40'-50'	\$115-\$120	0	0	0	0	302	0	0	0	0	0	302
259	Garza Lake Estates (The	DNW-Colony	Future	55'	\$0-\$0	0	0	0	0	0	0	0	0	0	4	4
317	Gates of Prestonwood	DNW-Carrltn	Act 4Q02	80'	\$600-\$1000	0	0	0	0	61	0	0	0	1	0	62
44	Grace Park	DNW-FlwrMnd	Act 1Q23	87'-100'	\$1100-\$1130	0	0	0	0	0	0	0	0	20	0	20
116	Grand Park Estates	DNW-FlwrMnd	BO 4Q07	80'	\$310-\$406	0	0	0	0	99	0	0	0	0	0	99
167	Great Lakes Crossing	DNW-Lewisvl	Future	50'	\$0-\$0	0	0	0	0	0	0	0	0	0	30	30
173	Greenvalley Addition	DNW-Lewisvl	Act 4Q20	20'	\$300-\$400	0	0	0	0	6	0	0	0	4	0	10

Current Activity and Profile Report

Lewisville ISD

Sorted by Subdivision

Map No	Subdivision Name	Sub Area	Status	Lot Size	Price Range	Qtr Starts	Ann Starts	Qtr Clos	Ann Clos	Occ	Inventory			VDL	Future	Total
											Mod	Fin Vac	U/C			
241	Greenway Park	DNW-Carrlltn	BO 2Q03	65'-80'	\$178-\$397	0	0	0	0	392	0	0	0	0	0	392
287	Hamilton Park	DNW-Carrlltn	BO 3Q21	45'	\$422-\$422	0	0	0	0	103	0	0	0	0	0	103
209	Harris Street Townhomes	DNW-Lewisvl	BO 4Q21	30'	\$300-\$300	0	0	0	0	4	0	0	0	0	0	4
118	Hawthorne	DNW-FlwrMnd	BO 2Q16	70'	\$435-\$532	0	0	0	0	52	0	0	0	0	0	52
117	Hearthstone @ Firewheel	DNW-FlwrMnd	BO 3Q05	50'	\$147-\$180	0	0	0	0	47	0	0	0	0	0	47
169	Hedrick Estates	DNW-Lewisvl	BO 1Q01	50'	\$134-\$140	0	0	0	0	118	0	0	0	0	0	118
202	Heritage Hill (Lewisville)	DNW-Lewisvl	BO 2Q07	35'	\$145-\$164	0	0	0	0	80	0	0	0	0	0	80
197	Heritage Square Addition	DNW-Lewisvl	BO 4Q09	35'	\$140-\$180	0	0	0	0	23	0	0	0	0	0	23
172	Heritage Trails Addition	DNW-Lewisvl	Act 1Q21	24'-32'	\$400-\$474	0	88	28	138	248	0	1	0	0	0	249
127	Heritage West	DNW-FlwrMnd	Act 4Q21	70'	\$1000-\$1200	0	1	1	29	29	0	0	1	0	0	30
94	Hickory Springs at Flower	DNW-FlwrMnd	BO 4Q07	94'	\$322-\$382	0	0	0	0	48	0	0	0	0	0	48
34	Hidden Creek Estates (Copper	DNW-CCanyon	Act 2Q08	250'	\$850-\$1000	0	3	0	3	10	0	0	0	3	0	13
237	Hidden Island	DNW-Carrlltn	BO 3Q06	65'	\$210-\$280	0	0	0	0	52	0	0	0	0	0	52
8	Hidden Valley Estates	DNW-FlwrMnd	BO 2Q08	100'-224'	\$160-\$550	0	0	0	0	159	0	0	0	0	0	159
2	High Meadow (Flower Mound)	DNW-FlwrMnd	BO 4Q20	120'	\$700-\$963	0	0	0	0	15	0	0	0	0	0	15
78	Highland Court	DNW-FlwrMnd	BO 1Q21	50'-70'	\$471-\$656	0	0	0	0	97	0	0	0	0	0	97
164	Highland Lakes (Lewisville)	DNW-Lewisvl	BO 2Q01	60'-61'	\$200-\$235	0	0	0	0	139	0	0	0	0	0	139
70	Highland Oaks (Highland	DNW-HighVil	BO 4Q22	95'	\$729-\$754	0	0	0	1	40	0	0	0	0	0	40
77	Highland Shores	DNW-HighVil	Act 2Q84	60'-110'	\$251-\$750	0	2	0	1	1,833	0	0	2	1	0	1,836
212	Highland Terraces (Lewisville)	DNW-Lewisvl	BO 4Q21	36'	\$366-\$391	0	0	0	0	32	0	0	0	0	0	32
147	Highlands/The (Lewisville)	DNW-Lewisvl	BO 2Q07	70'-100'	\$95-\$274	0	0	0	0	450	0	0	0	0	0	450
201	Highpoint Oaks Est. Addition	DNW-Lewisvl	BO 4Q18	50'	\$336-\$540	0	0	0	0	86	0	0	0	0	0	86
327	Hills @ Prestonwood V	DNE-Plano	BO 4Q01	75'-90'	\$346-\$545	0	0	0	0	69	0	0	0	0	0	69
330	Hills @ Prestonwood VI/Bluffs,	DNE-Plano	BO 4Q00	50'	\$309-\$370	0	0	0	0	41	0	0	0	0	0	41
319	Hills @ Prestonwood	DNE-Plano	BO 2Q01	75'-90'	\$242-\$401	0	0	0	0	102	0	0	0	0	0	102
316	Hills @ Prestonwood VIII	DNE-Plano	BO 3Q02	50'	\$285-\$550	0	0	0	0	149	0	0	0	0	0	149

Current Activity and Profile Report

Lewisville ISD

Sorted by Subdivision

Map No	Subdivision Name	Sub Area	Status	Lot Size	Price Range	Qtr Starts	Ann Starts	Qtr Clos	Ann Clos	Occ	Inventory			VDL	Future	Total
											Mod	Fin Vac	U/C			
238	Hills at Indian Creek	DNW-Carrlltn	BO 4Q15	52'-62'	\$315-\$447	0	0	0	0	118	0	0	0	0	0	118
332	Hills of Preston Creek, The	DNE-Plano	BO 2Q01	75'-100'	\$450-\$470	0	0	0	0	142	0	0	0	0	0	142
217	Hills of Vista Ridge	DNW-Lewisvl	BO 4Q17	50'	\$336-\$421	0	0	0	0	124	0	0	0	0	0	124
5	Hillside of Flower Mound	DNW-FlwrMnd	Act 2Q18	110'	\$700-\$1200	2	9	2	6	16	0	0	7	4	0	27
274	Homestead @ Carrollton	DNW-Carrlltn	BO 2Q08	55'-127'	\$192-\$600	0	0	0	0	459	0	0	0	0	0	459
120	Hunter's Glen (Flower Mound)	DNW-FlwrMnd	BO 4Q18	85'	\$539-\$680	0	0	0	0	70	0	0	0	0	0	70
175	Hunters Glen (Lewisville)	DNW-Lewisvl	BO 3Q00	40'	\$60-\$144	0	0	0	0	277	0	0	0	0	0	277
4	Immel Estates	DNW-FlwrMnd	BO 3Q04	200'-216'	\$549-\$563	0	0	0	0	58	0	0	0	0	0	58
276	Indian Creek Meadows Estates	DNW-Carrlltn	BO 2Q03	50'	\$147-\$190	0	0	0	0	70	0	0	0	0	0	70
233	Indian Creek/Cedar Elm Estates	DNW-Carrlltn	BO 2Q01	65'-80'	\$160-\$229	0	0	0	0	91	0	0	0	0	0	91
232	Indian Creek/Elm Wood Trail	DNW-Carrlltn	BO 4Q01	65'-73'	\$173-\$229	0	0	0	0	271	0	0	0	0	0	271
235	Indian Creek/Indian Pointe	DNW-Carrlltn	BO 4Q02	65'	\$188-\$243	0	0	0	0	192	0	0	0	0	0	192
230	Indian Creek/Oakwood Springs	DNW-Carrlltn	BO 2Q01	65'	\$168-\$197	0	0	0	0	280	0	0	0	0	0	280
214	Kathryn Commons Addn	DNW-Lewisvl	BO 2Q12	17'	\$140-\$180	0	0	0	0	5	0	0	0	0	0	5
16	Kensington Park Estates	DNW-FlwrMnd	BO 4Q01	290'	\$900-\$950	0	0	0	0	5	0	0	0	0	0	5
305	Kensington Place	DNW-Carrlltn	Act 4Q21	50'-70'	\$632-\$1028	11	75	30	54	54	3	9	24	6	0	96
324	Kings Gate (Plano)	DNE-Plano	Act 1Q96	162'	\$1900-\$6500	0	0	0	0	43	0	0	3	3	0	49
255	Kings Grant Addition	DNW-Lewisvl	BO 1Q15	53'-55'	\$399-\$409	0	0	0	0	85	0	0	0	0	0	85
314	Kings Ridge Addition	DNE-Plano	BO 2Q17	50'-90'	\$269-\$1380	0	0	0	0	577	0	0	0	0	0	577
61	Ladera Highland Village	DNW-HighVil	BO 3Q21	42'	\$358-\$469	0	0	0	0	102	0	0	0	0	0	102
76	Lake Forest Estates	DNW-FlwrMnd	BO 1Q02	75'-77'	\$230-\$276	0	0	0	0	334	0	0	0	0	0	334
7	Lake Hill Estates	DNW-FlwrMnd	BO 2Q01	145'	\$300-\$305	0	0	0	0	58	0	0	0	0	0	58
98	Lakemont Addition	DNW-FlwrMnd	BO 3Q05	95'	\$289-\$315	0	0	0	0	76	0	0	0	0	0	76
247	Lakeridge Townhomes	DNW-Lewisvl	Act 2Q06	22'	\$256-\$270	0	0	0	0	131	0	0	0	1	0	132
313	Lakes Legacy/Heritage Lakes	DNE-Frisco	BO 2Q07	50'-70'	\$212-\$412	0	0	0	0	590	0	0	0	0	0	590
328	Lakes Legacy/Lakehill	DNE-Frisco	BO 3Q03	65'-78'	\$284-\$423	0	0	0	0	261	0	0	0	0	0	261

Current Activity and Profile Report

Lewisville ISD

Sorted by Subdivision

Map No	Subdivision Name	Sub Area	Status	Lot Size	Price Range	Qtr Starts	Ann Starts	Qtr Clos	Ann Clos	Occ	Inventory			VDL	Future	Total
											Mod	Fin Vac	U/C			
326	Lakes Legacy/The Lakes	DNE-Frisco	BO 1Q12	77'	\$525-\$1250	0	0	0	0	140	0	0	0	0	0	140
323	Lakes Legacy/The Villas	DNE-Frisco	BO 4Q15	55'	\$269-\$725	0	0	0	0	102	0	0	0	0	0	102
104	Lakeside Center Townhomes	DNW-FlwrMnd	BO 2Q22	27'	\$500-\$600	0	0	0	0	8	0	0	0	0	0	8
105	Lakeside Crossing Townhomes	DNW-FlwrMnd	BO 2Q23	32'	\$660-\$765	0	6	5	10	15	0	0	0	0	0	15
86	Lakeside DFW (Flower Mound)	DNW-FlwrMnd	BO 4Q17	30'-65'	\$382-\$976	0	0	0	0	254	0	0	0	0	0	254
92	Lakeside Tower	DNW-FlwrMnd	Act 2Q19		\$1152-\$3854	0	0	0	3	47	0	1	0	0	0	48
102	Lakeside Village	DNW-FlwrMnd	Act 4Q21	40'	\$1000-\$1250	2	4	0	0	0	0	0	4	53	0	57
96	Lakeside Villas	DNW-FlwrMnd	BO 2Q23	35'	\$650-\$750	0	0	7	7	7	0	0	0	0	0	7
126	Lakewood (Flower Mound)	DNW-FlwrMnd	Future	31'-50'	\$0-\$0	0	0	0	0	0	0	0	0	0	164	164
88	Lakewood Addition (Highland	DNW-HighVil	BO 1Q00	150'	\$270-\$350	0	0	0	0	17	0	0	0	0	0	17
277	Lakewood Hills Addition	DNW-Lewisvl	Act 4Q17	50'-80'	\$573-\$825	15	146	46	137	428	3	8	78	5	0	522
9	Landing @ Northshore, The	DNW-FlwrMnd	BO 4Q18	240'-283'	\$920-\$2800	0	0	0	0	49	0	0	0	0	0	49
193	Larry Ho Addition	DNW-Lewisvl	Future	21'	\$0-\$0	0	0	0	0	0	0	0	0	0	4	4
296	Legends, The (Colony)	DNW-Colony	BO 4Q06	40'-80'	\$136-\$252	0	0	0	0	1,758	0	0	0	0	0	1,758
59	Legends, The (Flower Mound)	DNW-FlwrMnd	Act 1Q15	50'	\$418-\$445	0	0	0	0	90	0	0	0	1	0	91
146	Lexington Glen	DNW-FlwrMnd	BO 2Q06	40'	\$149-\$179	0	0	0	0	90	0	0	0	0	0	90
26	Liberty Park	DNW-FlwrMnd	BO 4Q21	70'	\$600-\$900	0	0	0	0	9	0	0	0	0	0	9
133	Magnolia Court	DNW-FlwrMnd	BO 4Q21	80'	\$623-\$725	0	0	0	0	29	0	0	0	0	0	29
31	Magnolia Park (Flower Mound)	DNW-FlwrMnd	BO 4Q18	85'	\$693-\$800	0	0	0	0	26	0	0	0	0	0	26
213	Main Street Village	DNW-Lewisvl	BO 1Q08	22'	\$139-\$158	0	0	0	0	141	0	0	0	0	0	141
136	Mallard Cove Estates	DNW-FlwrMnd	BO 3Q08	84'	\$210-\$320	0	0	0	0	3	0	0	0	0	0	3
211	Manors at Forestbrook Addition	DNW-Lewisvl	Act 4Q18	26'	\$335-\$390	6	21	1	24	62	4	0	26	19	0	111
225	Manors at Vista Ridge I	DNW-Lewisvl	BO 1Q19	28'	\$320-\$360	0	0	0	0	72	0	0	0	0	0	72
163	Meadow Lake	DNW-Lewisvl	BO 4Q01	65'	\$100-\$160	0	0	0	0	434	0	0	0	0	0	434
257	Meridian (Lewisville)	DNW-Lewisvl	BO 1Q10	53'-80'	\$201-\$391	0	0	0	0	390	0	0	0	0	0	390
184	Midway Park Addition	DNW-Lewisvl	BO 3Q05	50'	\$80-\$100	0	0	0	0	6	0	0	0	0	0	6

Current Activity and Profile Report

Lewisville ISD

Sorted by Subdivision

Map No	Subdivision Name	Sub Area	Status	Lot Size	Price Range	Qtr Starts	Ann Starts	Qtr Clos	Ann Clos	Occ	Inventory			VDL	Future	Total
											Mod	Fin Vac	U/C			
191	Milton Street Townhomes	DNW-Lewisvl	BO 2Q08	25'	\$140-\$210	0	0	0	0	3	0	0	0	0	0	3
262	Moore Farm	DNW-Carrlltn	BO 1Q08	50'-70'	\$202-\$650	0	0	0	0	385	0	0	0	0	0	385
292	Mustang Park	DNW-Carrlltn	BO 2Q18	50'-80'	\$340-\$632	0	0	0	0	389	0	0	0	0	0	389
302	Mustang Park Townhomes	DNW-Carrlltn	BO 4Q18	22'-35'	\$302-\$380	0	0	0	0	177	0	0	0	0	0	177
297	Mustang Park/Latera	DNW-Carrlltn	BO 4Q20	45'	\$382-\$422	0	0	0	0	55	0	0	0	0	0	55
331	Normandy Estates	DNE-Plano	BO 4Q22	59'-110'	\$1500-\$2680	0	0	0	3	126	0	0	0	0	0	126
322	Normandy Estates Townhomes	DNE-Plano	BO 4Q16	40'	\$430-\$470	0	0	0	0	3	0	0	0	0	0	3
179	Normandy Village	DNW-Lewisvl	Act 4Q19	25'	\$439-\$469	0	41	5	17	39	1	0	42	0	0	82
189	North Shore Villas	DNW-Lewisvl	BO 3Q13	50'-52'	\$144-\$195	0	0	0	0	15	0	0	0	0	0	15
183	Oak Creek Estates (Lewisville)	DNW-Lewisvl	BO 2Q01	100'	\$150-\$155	0	0	0	0	61	0	0	0	0	0	61
138	Oak Park Addn (Flwr Mnd)	DNW-FlwrMnd	BO 2Q00	60'	\$135-\$165	0	0	0	0	113	0	0	0	0	0	113
220	Oakbend Estates (Lewisville)	DNW-Lewisvl	Act 1Q21	30'	\$450-\$550	0	1	0	1	15	0	6	0	6	0	27
106	Oakbridge at Flower Mound	DNW-FlwrMnd	BO 3Q22	90'	\$916-\$959	0	0	0	1	95	0	0	0	0	0	95
101	Oakbridge Crossing	DNW-FlwrMnd	Future	80'	\$0-\$0	0	0	0	0	0	0	0	0	0	127	127
161	Oaks of Bellaire	DNW-Lewisvl	BO 1Q01	70'-75'	\$117-\$178	0	0	0	0	95	0	0	0	0	0	95
125	Oaks of Highland Village	DNW-HighVil	BO 2Q00	80'	\$200-\$250	0	0	0	0	64	0	0	0	0	0	64
192	Oaks of the Southwest	DNW-Lewisvl	BO 4Q04	25'	\$160-\$175	0	0	0	0	54	0	0	0	0	0	54
128	One Place	DNW-FlwrMnd	BO 2Q00	40'	\$93-\$110	0	0	0	0	63	0	0	0	0	0	63
166	Orchard Flower	DNW-FlwrMnd	BO 3Q21	50'-60'	\$433-\$587	0	0	0	0	98	0	0	0	0	0	98
170	Orchard Valley Estates	DNW-Lewisvl	BO 4Q00	50'-55'	\$158-\$160	0	0	0	0	379	0	0	0	0	0	379
206	Park Central Terraces	DNW-Lewisvl	BO 1Q23	35'	\$352-\$367	0	0	0	14	31	0	0	0	0	0	31
278	Parker Crossing	DNW-Carrlltn	Future	41'	\$0-\$0	0	0	0	0	0	0	0	0	0	61	61
306	Parker Estates (Plano)	DNE-Plano	BO 3Q06	25'-35'	\$140-\$205	0	0	0	0	419	0	0	0	0	0	419
252	Parker Place (Lewisville)	DNW-Lewisvl	Act 4Q21	40'	\$665-\$746	40	74	12	29	29	2	1	52	46	0	130
320	Parks at Austin Ranch	DNW-Colony	BO 1Q07	25'	\$250-\$255	0	0	0	0	8	0	0	0	0	0	8
219	Parks at Uecker Addition TH ,	DNW-Lewisvl	Future	40'	\$0-\$0	0	0	0	0	0	0	0	0	0	36	36

Current Activity and Profile Report

Lewisville ISD

Sorted by Subdivision

Map No	Subdivision Name	Sub Area	Status	Lot Size	Price Range	Qtr Starts	Ann Starts	Qtr Clos	Ann Clos	Occ	Inventory			VDL	Future	Total
											Mod	Fin Vac	U/C			
87	Parkside at Woodlake	DNW-FlwrMnd	BO 2Q18	50'	\$455-\$515	0	0	0	0	45	0	0	0	0	0	45
148	Pebble Ridge Estates	DNW-Lewisvl	BO 3Q02	60'	\$171-\$183	0	0	0	0	87	0	0	0	0	0	87
67	Pecan Meadows Addition	DNW-FlwrMnd	BO 4Q01	106'	\$272-\$315	0	0	0	0	68	0	0	0	0	0	68
28	Peninsula @ Twin Cove, The	DNW-FlwrMnd	BO 1Q01	120'-200'	\$250-\$570	0	0	0	0	93	0	0	0	0	0	93
19	Point Noble	DNW-FlwrMnd	BO 2Q10	156'	\$899-\$1600	0	0	0	0	52	0	0	0	0	0	52
80	Preserve at Flower Mound	DNW-FlwrMnd	BO 2Q18	81'	\$574-\$765	0	0	0	0	84	0	0	0	0	0	84
207	Preserve at Vista Ridge	DNW-Lewisvl	BO 3Q15	28'	\$269-\$270	0	0	0	0	27	0	0	0	0	0	27
15	Prince Estates	DNW-FlwrMnd	BO 4Q01	147'	\$450-\$1000	0	0	0	0	3	0	0	0	0	0	3
270	Quail Creek North	DNW-Carrltn	BO 4Q13	25'-35'	\$196-\$310	0	0	0	0	147	0	0	0	0	0	147
269	Quail Creek North Townhomes	DNW-Carrltn	BO 2Q11	25'	\$176-\$182	0	0	0	0	66	0	0	0	0	0	66
271	Quail Creek Townhomes	DNW-Carrltn	BO 3Q06	25'-35'	\$184-\$226	0	0	0	0	165	0	0	0	0	0	165
46	Red Hawk Addition	DNW-FlwrMnd	Future	40'	\$0-\$0	0	0	0	0	0	0	0	0	0	4	4
43	Regency Park Addition (Flower	DNW-FlwrMnd	BO 2Q18	110'-118'	\$469-\$875	0	0	0	0	56	0	0	0	0	0	56
65	Reserve at Chapel Hill	DNW-HighVil	Act 2Q21	65'-80'	\$717-\$812	2	12	8	48	61	0	4	6	1	0	72
129	Reserve at Creekside	DNW-FlwrMnd	BO 4Q02	100'	\$430-\$449	0	0	0	0	38	0	0	0	0	0	38
174	Reserve at Timber Creek, The	DNW-Lewisvl	BO 3Q03	75'	\$220-\$227	0	0	0	0	166	0	0	0	0	0	166
289	Reserve on Parker (Carrollton)	DNW-Carrltn	BO 2Q20	45'	\$407-\$414	0	0	0	0	106	0	0	0	0	0	106
286	Reserve on Parker Townhomes	DNW-Carrltn	BO 2Q20	25'	\$331-\$360	0	0	0	0	63	0	0	0	0	0	63
242	Ridge at Indian Creek	DNW-Carrltn	BO 4Q20	50'	\$420-\$504	0	0	0	0	64	0	0	0	0	0	64
267	Ridgepointe	DNW-Colony	BO 4Q03	50'-70'	\$110-\$281	0	0	0	0	563	0	0	0	0	0	563
157	Ridgeview Estates (Lewisville)	DNW-Lewisvl	BO 4Q05	61'	\$175-\$241	0	0	0	0	77	0	0	0	0	0	77
13	River Oaks Estates	DNW-FlwrMnd	BO 4Q06	150'	\$690-\$730	0	0	0	0	131	0	0	0	0	0	131
109	River Walk/Central Park Villas	DNW-FlwrMnd	BO 1Q23	40'	\$644-\$669	0	1	0	21	97	0	0	0	0	0	97
103	River Walk/Lakeshore Terrace	DNW-FlwrMnd	Act 1Q18	22'-40'	\$531-\$563	36	40	0	9	35	0	0	40	8	0	83
100	River Walk/Parkmont Place	DNW-FlwrMnd	BO 4Q20	30'	\$403-\$471	0	0	0	0	52	0	0	0	0	0	52
110	River Walk/Pinnacle	DNW-FlwrMnd	BO 2Q21	25'	\$329-\$339	0	0	0	0	55	0	0	0	0	0	55

Current Activity and Profile Report

Lewisville ISD

Sorted by Subdivision

Map No	Subdivision Name	Sub Area	Status	Lot Size	Price Range	Qtr Starts	Ann Starts	Qtr Clos	Ann Clos	Occ	Inventory			VDL	Future	Total
											Mod	Fin Vac	U/C			
108	River Walk/Riverside Point	DNW-FlwrMnd	BO 4Q20	25'	\$383-\$386	0	0	0	0	72	0	0	0	0	0	72
293	Rock Creek Townhomes	DNE-Frisco	Future	25'	\$0-\$0	0	0	0	0	0	0	0	0	0	93	93
222	Rockbrook Place Addition	DNW-Lewisvl	BO 2Q13	26'	\$180-\$186	0	0	0	0	153	0	0	0	0	0	153
37	Rockhaven Estates	DNW-FlwrMnd	BO 4Q21	150'	\$700-\$1200	0	0	0	0	11	0	0	0	0	0	11
69	Rolling Hills Estates (Highland	DNW-HighVil	BO 2Q06	65'	\$221-\$370	0	0	0	0	163	0	0	0	0	0	163
123	Rosalie Estates	DNW-HighVil	BO 4Q00	130'	\$150-\$279	0	0	0	0	5	0	0	0	0	0	5
29	Saddle Oaks Addition	DNW-FlwrMnd	BO 2Q07	150'	\$570-\$600	0	0	0	0	45	0	0	0	0	0	45
281	Saddle Ridge (Carrollton)	DNW-Carrlltn	BO 2Q21	45'	\$400-\$443	0	0	0	0	86	0	0	0	0	0	86
27	Saddlewood (Flower Mound)	DNW-FlwrMnd	Act 4Q15	120'	\$989-\$1046	0	0	0	2	46	0	0	1	2	0	49
151	Samuel Place	DNW-Lewisvl	BO 2Q07	65'	\$175-\$220	0	0	0	0	27	0	0	0	0	0	27
63	Sanctuary at Flower Mound	DNW-FlwrMnd	BO 3Q08	100'	\$449-\$598	0	0	0	0	89	0	0	0	0	0	89
3	Serenity (Flower Mound)	DNW-FlwrMnd	Future	80'	\$0-\$0	0	0	0	0	0	0	0	0	0	18	18
223	Settler's Village Townhomes	DNW-Lewisvl	BO 1Q15	20'	\$209-\$217	0	0	0	0	228	0	0	0	0	0	228
6	Shiloh Ranch Estates	DNW-FlwrMnd	BO 2Q03	280'	\$173-\$178	0	0	0	0	33	0	0	0	0	0	33
329	Shoal Creek	DNE-Plano	BO 2Q10	50'-100'	\$268-\$2000	0	0	0	0	312	0	0	0	0	0	312
309	Shops at Prestonwood, The	DNW-Carrlltn	BO 2Q19	22'-28'	\$269-\$560	0	0	0	0	188	0	0	0	0	0	188
22	Simple Oaks Estates	DNW-DOak	BO 2Q17	176'	\$200-\$500	0	0	0	0	3	0	0	0	0	0	3
260	Sojourn at the Realm Condos	DNW-Lewisvl	BO 1Q22		\$299-\$407	0	0	0	0	80	0	0	0	0	0	80
200	South Village Addition	DNW-Lewisvl	BO 2Q23	44'	\$340-\$380	0	1	5	5	63	0	0	0	0	0	63
187	Southridge Addition (Lewisville)	DNW-Lewisvl	BO 2Q00	60'-61'	\$146-\$189	0	0	0	0	187	0	0	0	0	0	187
215	Sparkman Estates	DNW-Lewisvl	BO 2Q08	30'	\$235-\$240	0	0	0	0	2	0	0	0	0	0	2
224	Spectra Heights Addition	DNW-Lewisvl	Future	24'	\$0-\$0	0	0	0	0	0	0	0	0	0	18	18
71	St. James Place	DNW-HighVil	BO 4Q22	65'	\$255-\$330	0	0	0	1	13	0	0	0	0	0	13
56	Stafford Estates	DNW-FlwrMnd	BO 2Q00	75'-85'	\$226-\$311	0	0	0	0	248	0	0	0	0	0	248
250	Stewart Peninsula/Cottonwood	DNW-Colony	BO 1Q04	55'	\$142-\$280	0	0	0	0	246	0	0	0	0	0	246
248	Stewart Peninsula/Cypress	DNW-Colony	BO 4Q09	50'-60'	\$285-\$423	0	0	0	0	172	0	0	0	0	0	172

Current Activity and Profile Report

Lewisville ISD

Sorted by Subdivision

Map No	Subdivision Name	Sub Area	Status	Lot Size	Price Range	Qtr Starts	Ann Starts	Qtr Clos	Ann Clos	Occ	Inventory			VDL	Future	Total
											Mod	Fin Vac	U/C			
251	Stewart Peninsula/Heights, The	DNW-Colony	BO 3Q03	55'-65'	\$163-\$209	0	0	0	0	120	0	0	0	0	0	120
249	Stewart Peninsula/Northshore	DNW-Colony	BO 2Q10	55'-85'	\$400-\$769	0	0	0	0	94	0	0	0	0	0	94
253	Stewart Peninsula/The Cedars	DNW-Colony	BO 4Q02	55'-62'	\$143-\$189	0	0	0	0	43	0	0	0	0	0	43
122	Stone Hill Farm	DNW-FlwrMnd	BO 3Q02	70'-84'	\$181-\$247	0	0	0	0	553	0	0	0	0	0	553
334	Stonebriar	DNE-Frisco	BO 1Q11	50'-110'	\$250-\$2700	0	0	0	0	624	0	0	0	0	0	624
318	Stonebriar Country Club Est.	DNE-Frisco	Act 2Q01	90'	\$849-\$1900	0	0	0	0	91	0	0	0	4	0	95
135	Suncrest @ Flower Mound	DNW-FlwrMnd	BO 4Q13	55'-80'	\$240-\$398	0	0	0	0	102	0	0	0	0	0	102
35	Sunset Point at Twin Coves	DNW-FlwrMnd	Act 4Q21	80'	\$1100-\$1300	1	10	5	8	8	0	1	3	6	0	18
95	Surrey Lane Addition	DNW-FlwrMnd	BO 4Q16	90'	\$700-\$800	0	0	0	0	3	0	0	0	0	0	3
121	Tequesta	DNW-HighVil	BO 3Q22	60'	\$499-\$556	0	0	0	2	11	0	0	0	0	0	11
55	Terracina (Flower Mound)	DNW-FlwrMnd	Act 3Q12	100'	\$695-\$771	0	0	0	0	167	0	0	0	1	0	168
333	The Corvalla at Stonebriar	DNE-Frisco	Act 1Q18		\$525-\$2000	0	0	3	5	51	0	18	0	0	52	121
282	The Hills of Kingswood	DNE-Frisco	Act 1Q09	65'-150'	\$1460-\$4500	1	24	8	33	307	0	2	33	71	199	612
68	Three Bridges Estates	DNW-FlwrMnd	Act 2Q05	258'	\$800-\$1000	0	0	0	0	14	0	0	0	2	0	16
185	Timber Creek Park Estates	DNW-Lewisvl	BO 4Q01	61'	\$112-\$160	0	0	0	0	63	0	0	0	0	0	63
205	Timber Creek Willows	DNW-Lewisvl	Future	25'	\$0-\$0	0	0	0	0	0	0	0	0	0	31	31
195	Timber Hill Addition	DNW-Lewisvl	BO 3Q00	53'	\$135-\$185	0	0	0	0	84	0	0	0	0	0	84
188	Timber Valley Estates	DNW-Lewisvl	BO 2Q00	40'-67'	\$90-\$128	0	0	0	0	100	0	0	0	0	0	100
162	Tinley Park	DNW-FlwrMnd	BO 3Q22	50'-100'	\$635-\$635	0	0	0	1	35	0	0	0	0	0	35
24	Town Lake at Flower Mound	DNW-FlwrMnd	Act 1Q17	100'-120'	\$1518-\$1627	3	22	10	35	144	0	9	7	1	67	228
93	Towne View Estates	DNW-FlwrMnd	BO 2Q02	80'-97'	\$260-\$322	0	0	0	0	144	0	0	0	0	0	144
204	Townhomes @ Continental	DNW-Lewisvl	BO 4Q17	24'	\$158-\$220	0	0	0	0	90	0	0	0	0	0	90
218	Townhomes of Vista Ridge	DNW-Lewisvl	BO 2Q10	25'	\$179-\$189	0	0	0	0	37	0	0	0	0	0	37
66	Traditions of Flower Mound	DNW-FlwrMnd	Future	107'	\$0-\$0	0	0	0	0	0	0	0	0	0	9	9
294	Trails at Arbor Hill	DNW-Carrltn	BO 4Q20	50'	\$394-\$595	0	0	0	0	68	0	0	0	0	0	68
216	Trinity Townhomes (Lewisville)	DNW-Lewisvl	Future	17'	\$0-\$0	0	0	0	0	0	0	0	0	0	8	8

Current Activity and Profile Report

Lewisville ISD

Sorted by Subdivision

Map No	Subdivision Name	Sub Area	Status	Lot Size	Price Range	Qtr Starts	Ann Starts	Qtr Clos	Ann Clos	Occ	Inventory			VDL	Future	Total
											Mod	Fin Vac	U/C			
30	Twin Lakes Estates	DNW-DOak	BO 3Q03	100'	\$400-\$500	0	0	0	0	70	0	0	0	0	0	70
208	Uptown Village	DNW-Lewisvl	BO 3Q21	22'-25'	\$199-\$330	0	0	0	0	70	0	0	0	0	0	70
182	Valley View Addition	DNW-Lewisvl	BO 2Q01	65'	\$94-\$175	0	0	0	0	92	0	0	0	0	0	92
180	Valley Vista Estates	DNW-Lewisvl	BO 2Q00	66'-100'	\$118-\$225	0	0	0	0	618	0	0	0	0	0	618
168	Verona Addition (Lewisville)	DNW-Lewisvl	BO 4Q17	50'	\$306-\$348	0	0	0	0	138	0	0	0	0	0	138
32	Vickery	DNW-CCanyon	Act 1Q21	62'-100'	\$798-\$1380	23	67	21	80	86	3	4	50	82	0	225
53	Vilamoura	DNW-FlwrMnd	BO 4Q17	72'	\$600-\$800	0	0	0	0	28	0	0	0	0	0	28
312	Village at Prestonwood	DNE-Plano	BO 2Q11	40'-50'	\$200-\$241	0	0	0	0	132	0	0	0	0	0	132
283	Village at the Pointe	DNW-Colony	BO 3Q20	26'	\$360-\$360	0	0	0	0	77	0	0	0	0	0	77
300	Village Townhomes	DNW-Colony	Future	30'	\$0-\$0	0	0	0	0	0	0	0	0	0	74	74
239	Villages of Indian Creek	DNW-Carrlltn	BO 1Q03	40'-50'	\$130-\$165	0	0	0	0	563	0	0	0	0	0	563
85	Villages of Northshore, The	DNW-FlwrMnd	BO 3Q00	68'-94'	\$232-\$260	0	0	0	0	330	0	0	0	0	0	330
240	Villas at Indian Creek	DNW-Carrlltn	BO 4Q13	40'	\$250-\$289	0	0	0	0	33	0	0	0	0	0	33
226	Villas at Lake Vista Townhomes	DNW-Coppell	BO 2Q14	30'	\$260-\$333	0	0	0	0	93	0	0	0	0	0	93
304	Villas at Parker	DNW-Carrlltn	BO 4Q20	45'	\$379-\$400	0	0	0	0	100	0	0	0	0	0	100
131	Villas at Southgate (Flower	DNW-FlwrMnd	BO 1Q23	30'	\$510-\$549	0	0	0	18	146	0	0	0	0	0	146
134	Villas at Southgate Townhomes	DNW-FlwrMnd	Act 3Q18	22'	\$470-\$576	5	19	2	72	215	1	0	8	0	0	224
190	Villas of Bellaire Addition	DNW-Lewisvl	Future	26'	\$0-\$0	0	0	0	0	0	0	0	0	0	102	102
243	Villas of Indian Creek	DNW-Carrlltn	BO 1Q11	60'-80'	\$234-\$489	0	0	0	0	353	0	0	0	0	0	353
234	Villas of Indian Creek TH'S	DNW-Carrlltn	BO 1Q15	22'	\$227-\$256	0	0	0	0	204	0	0	0	0	0	204
315	Villas of Prestonwood	DNW-Carrlltn	BO 2Q23	28'	\$451-\$530	0	4	1	25	194	0	0	0	0	0	194
227	Vista del Lago Addition TH	DNW-Lewisvl	Act 3Q19	22'	\$416-\$491	0	9	7	57	141	0	7	0	0	0	148
221	Vista Ridge Brownstones	DNW-Lewisvl	BO 2Q17	24'	\$215-\$260	0	0	0	0	105	0	0	0	0	0	105
181	Vista Villas Addition	DNW-Lewisvl	BO 3Q20	50'	\$326-\$393	0	0	0	0	46	0	0	0	0	0	46
73	Walnut Grove Addition	DNW-FlwrMnd	BO 4Q08	46'	\$290-\$300	0	0	0	0	13	0	0	0	0	0	13
308	Warmington Meadows	DNW-Carrlltn	BO 2Q14	80'	\$386-\$709	0	0	0	0	68	0	0	0	0	0	68

Current Activity and Profile Report

Lewisville ISD

Sorted by Subdivision

Map No	Subdivision Name	Sub Area	Status	Lot Size	Price Range	Qtr Starts	Ann Starts	Qtr Clos	Ann Clos	Occ	Inventory			VDL	Future	Total
											Mod	Fin Vac	U/C			
111	Waterford Park Estates (Flower	DNW-FlwrMnd	BO 3Q15	70'-114'	\$299-\$445	0	0	0	0	191	0	0	0	0	0	191
256	Waters Edge, The	DNW-Colony	BO 4Q09	60'	\$475-\$900	0	0	0	0	15	0	0	0	0	0	15
45	Wellington Manor (Flower	DNW-FlwrMnd	BO 2Q14	80'	\$469-\$554	0	0	0	0	31	0	0	0	0	0	31
36	Wellington/Brandywine @	DNW-FlwrMnd	BO 4Q04	95'	\$395-\$439	0	0	0	0	39	0	0	0	0	0	39
38	Wellington/Estates, The	DNW-FlwrMnd	BO 3Q07	50'-71'	\$228-\$364	0	0	0	0	759	0	0	0	0	0	759
42	Wellington/Hillcrest	DNW-FlwrMnd	BO 1Q04	75'-106'	\$340-\$374	0	0	0	0	260	0	0	0	0	0	260
57	Wellington/Wetherstone	DNW-FlwrMnd	BO 2Q04	50'-70'	\$134-\$335	0	0	0	0	976	0	0	0	0	0	976
150	Wentworth Villas Estates	DNW-Lewisvl	BO 2Q10	40'	\$185-\$205	0	0	0	0	60	0	0	0	0	0	60
18	West Oaks	DNW-DOak	BO 2Q17	160'	\$400-\$3000	0	0	0	0	16	0	0	0	0	0	16
265	Westport Lakeview Villas	DNW-Colony	Act 1Q19	25'	\$970-\$980	0	0	0	4	23	0	2	8	0	0	33
112	Whisper Creek	DNW-FlwrMnd	BO 2Q16	93'	\$615-\$830	0	0	0	0	31	0	0	0	0	0	31
152	Whispering Oaks (Lewisville)	DNW-Lewisvl	BO 4Q00	50'-70'	\$102-\$172	0	0	0	0	209	0	0	0	0	0	209
82	Whitestone Village (Highland	DNW-HighVil	Future	30'	\$0-\$0	0	0	0	0	0	0	0	0	0	39	39
81	Whyburn	DNW-FlwrMnd	Future	80'	\$0-\$0	0	0	0	0	0	0	0	0	0	105	105
33	Wichita Chase	DNW-FlwrMnd	BO 2Q06	90'-140'	\$356-\$465	0	0	0	0	297	0	0	0	0	0	297
20	Wichita Creek Estates	DNW-FlwrMnd	BO 2Q01	160'-165'	\$460-\$650	0	0	0	0	105	0	0	0	0	0	105
137	Wichita Estates	DNW-HighVil	BO 1Q23	80'	\$535-\$637	0	1	0	2	39	0	0	0	0	0	39
210	Willowbrook Addition	DNW-Lewisvl	BO 2Q19	50'	\$368-\$446	0	0	0	0	75	0	0	0	0	0	75
246	Windhaven Crossing	DNW-Lewisvl	Act 1Q17	22'	\$506-\$537	1	35	6	31	291	1	25	39	7	0	363
58	Woods @ Wellington, The	DNW-FlwrMnd	BO 4Q02	80'	\$340-\$380	0	0	0	0	70	0	0	0	0	0	70
48	Wright Estates	DNW-FlwrMnd	BO 3Q08	223'	\$559-\$590	0	0	0	0	16	0	0	0	0	0	16
244	Wyndale Meadows Addition	DNW-Lewisvl	BO 3Q20	50'-65'	\$383-\$505	0	0	0	0	231	0	0	0	0	0	231
Selection Totals						237	973	241	1,184	44,631	22	110	603	543	1,545	47,454

Quarterly Activity & Inventory Report

Lewisville ISD

Sorted By Subdivision

Subdivision Name (Map No)	Sub Area	Price Range	Lot Size	Status	2Q21	3Q21	4Q21	1Q22	2Q22	3Q22	4Q22	1Q23	2Q23	Ann. Rates/ *Inv. Supply	
Adams Estates (74) \$500-\$899 83'-151'	DNW-FlwrMnd BO 3Q17	Starts			0	0	0	0	0	0	0	0	0	0	
		Closings			0	0	0	0	0	0	0	0	0	0	0
		Housing Inv			0	0	0	0	0	0	0	0	0	0	0.0
		VDL Inv			0	0	0	0	0	0	0	0	0	0	0.0
Arbor Creek (Carroll (285)) \$103-\$217 50'-74'	DNW-Carrltn BO 2Q01	Starts			0	0	0	0	0	0	0	0	0	0	
		Closings			0	0	0	0	0	0	0	0	0	0	0
		Housing Inv			0	0	0	0	0	0	0	0	0	0	0.0
		VDL Inv			0	0	0	0	0	0	0	0	0	0	0.0
Arbor Vista North (325) \$360-\$700 90'	DNE-Plano BO 4Q01	Starts			0	0	0	0	0	0	0	0	0	0	
		Closings			0	0	0	0	0	0	0	0	0	0	0
		Housing Inv			0	0	0	0	0	0	0	0	0	0	0.0
		VDL Inv			0	0	0	0	0	0	0	0	0	0	0.0
Arborwood (114) \$228-\$299 75'-105'	DNW-FlwrMnd BO 2Q03	Starts			0	0	0	0	0	0	0	0	0	0	
		Closings			0	0	0	0	0	0	0	0	0	0	0
		Housing Inv			0	0	0	0	0	0	0	0	0	0	0.0
		VDL Inv			0	0	0	0	0	0	0	0	0	0	0.0
Archer Addition (160) \$308-\$329 41'	DNW-Lewisvl BO 4Q20	Starts			0	0	0	0	0	0	0	0	0	0	
		Closings			0	0	0	0	0	0	0	0	0	0	0
		Housing Inv			0	0	0	0	0	0	0	0	0	0	0.0
		VDL Inv			0	0	0	0	0	0	0	0	0	0	0.0
Auburn Farms (51) \$770-\$800 84'	DNW-FlwrMnd BO 4Q16	Starts			0	0	0	0	0	0	0	0	0	0	
		Closings			0	0	0	0	0	0	0	0	0	0	0
		Housing Inv			0	0	0	0	0	0	0	0	0	0	0.0
		VDL Inv			0	0	0	0	0	0	0	0	0	0	0.0
Austin Hills (288) \$406-\$506 50'	DNW-Carrltn BO 1Q18	Starts			0	0	0	0	0	0	0	0	0	0	
		Closings			0	0	0	0	0	0	0	0	0	0	0
		Housing Inv			0	0	0	0	0	0	0	0	0	0	0.0
		VDL Inv			0	0	0	0	0	0	0	0	0	0	0.0
Austin Waters (Carro (295)) \$430-\$465 53' Darling Homes	DNW-Carrltn Act 2Q07	Starts			0	0	0	0	0	0	0	0	0	0	
		Closings			0	0	0	0	0	0	0	0	0	0	0
		Housing Inv			0	0	0	0	0	0	0	0	0	0	0.0
		VDL Inv			1	1	1	1	1	1	1	1	1	1	n/a
Austin Waters Townho (290) \$286-\$485 30'-45'	DNW-Carrltn BO 1Q21	Starts			0	0	0	0	0	0	0	0	0	0	
		Closings			0	0	0	0	0	0	0	0	0	0	0
		Housing Inv			0	0	0	0	0	0	0	0	0	0	0.0
		VDL Inv			0	0	0	0	0	0	0	0	0	0	0.0
Avondale (Carrollton (275)) \$358-\$435 50'	DNW-Carrltn BO 3Q16	Starts			0	0	0	0	0	0	0	0	0	0	
		Closings			0	0	0	0	0	0	0	0	0	0	0
		Housing Inv			0	0	0	0	0	0	0	0	0	0	0.0
		VDL Inv			0	0	0	0	0	0	0	0	0	0	0.0
Baker's Branch Estat (139) \$280-\$286 85'-117'	DNW-FlwrMnd BO 1Q02	Starts			0	0	0	0	0	0	0	0	0	0	
		Closings			0	0	0	0	0	0	0	0	0	0	0
		Housing Inv			0	0	0	0	0	0	0	0	0	0	0.0
		VDL Inv			0	0	0	0	0	0	0	0	0	0	0.0

Quarterly Activity & Inventory Report

Lewisville ISD

Sorted By Subdivision

Subdivision Name (Map No)	Sub Area	Status	2Q21	3Q21	4Q21	1Q22	2Q22	3Q22	4Q22	1Q23	2Q23	Ann. Rates/ *Inv. Supply	
Bella Lago (Flower M (12)) \$800-\$1075 150'-152'	DNW-FlwrMnd BO 2Q15	Starts	0	0	0	0	0	0	0	0	0	0	
		Closings	0	0	0	0	0	0	0	0	0	0	
		Housing Inv	0	0	0	0	0	0	0	0	0	0	0.0
		VDL Inv	0	0	0	0	0	0	0	0	0	0	0.0
Bella Strada (130) \$426-\$562 43'-70'	DNW-FlwrMnd BO 2Q16	Starts	0	0	0	0	0	0	0	0	0	0	
		Closings	0	0	0	0	0	0	0	0	0	0	
		Housing Inv	0	0	0	0	0	0	0	0	0	0	0.0
		VDL Inv	0	0	0	0	0	0	0	0	0	0	0.0
Bellaire Addition (154) \$145-\$161 65'	DNW-Lewisvl BO 4Q00	Starts	0	0	0	0	0	0	0	0	0	0	
		Closings	0	0	0	0	0	0	0	0	0	0	
		Housing Inv	0	0	0	0	0	0	0	0	0	0	0.0
		VDL Inv	0	0	0	0	0	0	0	0	0	0	0.0
Belle Creek Village (165) \$384-\$474 83'	DNW-FlwrMnd BO 2Q13	Starts	0	0	0	0	0	0	0	0	0	0	
		Closings	0	0	0	0	0	0	0	0	0	0	
		Housing Inv	0	0	0	0	0	0	0	0	0	0	0.0
		VDL Inv	0	0	0	0	0	0	0	0	0	0	0.0
Bradford Park (Flowe (72)) \$634-\$897 50' <i>Lennar Homes/Village Builders Inc</i>	DNW-FlwrMnd Act 1Q19	Starts	7	11	12	13	9	3	8	4	0	15	
		Closings	5	10	7	2	16	10	13	13	8	8	44
		Housing Inv	23	24	29	40	33	26	21	12	4	4	1.1 mos
		VDL Inv	60	49	37	24	15	12	4	0	0	0	0.0
Brentwood Court Town (298) \$485-\$485 24' <i>Havendale Homes</i>	DNW-Colony Act 1Q20	Starts	0	5	0	0	0	8	0	2	0	10	
		Closings	0	0	5	0	0	5	0	0	5	5	10
		Housing Inv	0	5	0	0	0	3	3	5	0	0	0.0
		VDL Inv	38	33	33	33	33	25	25	23	23	23	27.6 mos
Bridlewood (41) \$213-\$850 70'-208'	DNW-FlwrMnd BO 3Q08	Starts	0	0	0	0	0	0	0	0	0	0	
		Closings	0	0	0	0	0	0	0	0	0	0	
		Housing Inv	0	0	0	0	0	0	0	0	0	0	0.0
		VDL Inv	0	0	0	0	0	0	0	0	0	0	0.0
Brighton Place (49) \$750-\$800 149'	DNW-FlwrMnd BO 1Q21	Starts	0	0	0	0	0	0	0	0	0	0	
		Closings	0	0	0	0	0	0	0	0	0	0	
		Housing Inv	0	0	0	0	0	0	0	0	0	0	0.0
		VDL Inv	0	0	0	0	0	0	0	0	0	0	0.0
Brittian Estates (153) \$450-\$570 100'	DNW-Lewisvl BO 4Q03	Starts	0	0	0	0	0	0	0	0	0	0	
		Closings	0	0	0	0	0	0	0	0	0	0	
		Housing Inv	0	0	0	0	0	0	0	0	0	0	0.0
		VDL Inv	0	0	0	0	0	0	0	0	0	0	0.0
Brookside Addition (198) \$269-\$339 50'	DNW-Lewisvl BO 3Q16	Starts	0	0	0	0	0	0	0	0	0	0	
		Closings	0	0	0	0	0	0	0	0	0	0	
		Housing Inv	0	0	0	0	0	0	0	0	0	0	0.0
		VDL Inv	0	0	0	0	0	0	0	0	0	0	0.0
Brookstone Addition (141) \$240-\$347 80'	DNW-FlwrMnd BO 4Q03	Starts	0	0	0	0	0	0	0	0	0	0	
		Closings	0	0	0	0	0	0	0	0	0	0	
		Housing Inv	0	0	0	0	0	0	0	0	0	0	0.0
		VDL Inv	0	0	0	0	0	0	0	0	0	0	0.0

Quarterly Activity & Inventory Report

Lewisville ISD

Sorted By Subdivision

Subdivision Name (Map No)	Sub Area	Price Range	Lot Size	Status	2Q21	3Q21	4Q21	1Q22	2Q22	3Q22	4Q22	1Q23	2Q23	Ann. Rates/ *Inv. Supply	
Brownstones on West (203) \$400-\$450 20'	DNW-Lewisvl BO 3Q22	Starts			0	0	0	0	0	0	0	0	0	0	
		Closings			0	0	0	0	0	8	0	0	0	0	8
		Housing Inv			8	8	8	8	8	8	0	0	0	0	0.0
		VDL Inv			0	0	0	0	0	0	0	0	0	0	0.0
Bryn Mar Estates (107) \$330-\$366 90'	DNW-FlwrMnd BO 4Q02	Starts			0	0	0	0	0	0	0	0	0	0	
		Closings			0	0	0	0	0	0	0	0	0	0	0
		Housing Inv			0	0	0	0	0	0	0	0	0	0	0.0
		VDL Inv			0	0	0	0	0	0	0	0	0	0	0.0
Caldwell Court (Flow) (113) \$0-\$0 72'	DNW-FlwrMnd Future	Starts			0	0	0	0	0	0	0	0	0	0	
		Closings			0	0	0	0	0	0	0	0	0	0	0
		Housing Inv			0	0	0	0	0	0	0	0	0	0	0.0
		VDL Inv			0	0	0	0	0	0	0	0	0	0	0.0
Camey Place (284) \$584-\$724 45' David Weekley Homes	DNW-Colony Act 3Q22	Starts			0	0	0	0	0	0	7	16	31	54	
		Closings			0	0	0	0	0	0	0	0	0	0	0
		Housing Inv			0	0	0	0	0	0	0	7	23	54	n/a
		VDL Inv			0	0	0	0	0	80	73	57	26	26	5.8 mos
Camryn Downs (47) \$750-\$800 100'	DNW-DOak BO 4Q16	Starts			0	0	0	0	0	0	0	0	0	0	
		Closings			0	0	0	0	0	0	0	0	0	0	0
		Housing Inv			0	0	0	0	0	0	0	0	0	0	0.0
		VDL Inv			0	0	0	0	0	0	0	0	0	0	0.0
Canterbury Row (50) \$450-\$600 100'	DNW-FlwrMnd BO 2Q10	Starts			0	0	0	0	0	0	0	0	0	0	
		Closings			0	0	0	0	0	0	0	0	0	0	0
		Housing Inv			0	0	0	0	0	0	0	0	0	0	0.0
		VDL Inv			0	0	0	0	0	0	0	0	0	0	0.0
Carrington Village (196) \$199-\$273 35'	DNW-Lewisvl BO 2Q14	Starts			0	0	0	0	0	0	0	0	0	0	
		Closings			0	0	0	0	0	0	0	0	0	0	0
		Housing Inv			0	0	0	0	0	0	0	0	0	0	0.0
		VDL Inv			0	0	0	0	0	0	0	0	0	0	0.0
Cascades at the Lege (301) \$149-\$194 50'-55'	DNW-Colony BO 1Q10	Starts			0	0	0	0	0	0	0	0	0	0	
		Closings			0	0	0	0	0	0	0	0	0	0	0
		Housing Inv			0	0	0	0	0	0	0	0	0	0	0.0
		VDL Inv			0	0	0	0	0	0	0	0	0	0	0.0
Cascades at the Lege (303) \$127-\$161 25'-33'	DNW-Colony BO 1Q10	Starts			0	0	0	0	0	0	0	0	0	0	
		Closings			0	0	0	0	0	0	0	0	0	0	0
		Housing Inv			0	0	0	0	0	0	0	0	0	0	0.0
		VDL Inv			0	0	0	0	0	0	0	0	0	0	0.0
Castle Hills (Lewisv) (254) \$435-\$2000 134'	DNW-Lewisvl Act 2Q98	Starts			8	12	1	2	1	2	6	4	7	19	
		Closings			0	1	0	1	8	11	0	2	0	0	13
		Housing Inv			11	22	23	24	17	8	14	16	23	23	21.2 mos
		VDL Inv			57	45	44	42	40	38	32	28	21	21	13.3 mos

Quarterly Activity & Inventory Report

Lewisville ISD

Sorted By Subdivision

Subdivision Name (Map No)	Sub Area	Price Range	Lot Size	Status	2Q21	3Q21	4Q21	1Q22	2Q22	3Q22	4Q22	1Q23	2Q23	Ann. Rates/ *Inv. Supply
Castle Hills/Carroll (272)	DNW-Carrltn			Starts	27	104	41	42	15	23	9	18	3	53
\$448-\$931	41'-50'	Act 4Q20		Closings	0	2	15	44	61	76	40	14	15	145
<i>American Legend Homes/Shaddock Homes</i>				Housing Inv	28	130	156	154	108	55	24	28	16	1.3 mos
				VDL Inv	279	152	111	69	54	30	21	3	0	0.0
Castle Hills/Chateau (258)	DNW-Lewisvl			Starts	0	0	0	0	0	0	0	0	0	0
\$390-\$455	28'	BO 2Q18		Closings	0	0	0	0	0	0	0	0	0	0
				Housing Inv	0	0	0	0	0	0	0	0	0	0.0
				VDL Inv	0	0	0	0	0	0	0	0	0	0.0
Castle Hills/Discover (266)	DNW-Lewisvl			Starts	0	0	0	0	0	0	0	0	0	0
\$0-\$0	37'	Future		Closings	0	0	0	0	0	0	0	0	0	0
				Housing Inv	0	0	0	0	0	0	0	0	0	0.0
				VDL Inv	0	0	0	0	0	0	0	0	0	0.0
Castle Hills/Northpo (263)	DNW-Lewisvl			Starts	3	2	0	2	0	21	0	35	48	104
\$617-\$850	41'-80'	Act 3Q19		Closings	8	4	2	0	2	3	4	17	0	24
<i>American Legend Homes</i>				Housing Inv	10	8	6	8	6	24	20	38	86	43.0 mos
				VDL Inv	162	159	163	161	151	130	130	95	47	5.4 mos
Castle Hills/Northpo (268)	DNW-Lewisvl			Starts	20	0	0	0	0	0	0	0	0	0
\$420-\$451	36'	BO 1Q22		Closings	22	13	0	14	0	0	0	0	0	0
				Housing Inv	27	14	14	0	0	0	0	0	0	0.0
				VDL Inv	0	0	0	0	0	0	0	0	0	0.0
Castle Hills/Retreat (264)	DNW-Lewisvl			Starts	0	0	0	0	0	0	0	0	0	0
\$380-\$410	42'	BO 2Q14		Closings	0	0	0	0	0	0	0	0	0	0
				Housing Inv	0	0	0	0	0	0	0	0	0	0.0
				VDL Inv	0	0	0	0	0	0	0	0	0	0.0
Castle Hills/Southwe (245)	DNW-Carrltn			Starts	0	0	0	0	0	0	0	0	0	0
\$377-\$603	41'-50'	BO 1Q21		Closings	0	0	0	0	0	0	0	0	0	0
				Housing Inv	0	0	0	0	0	0	0	0	0	0.0
				VDL Inv	0	0	0	0	0	0	0	0	0	0.0
Castle Hills/Village (261)	DNW-Lewisvl			Starts	0	0	0	0	0	0	0	0	0	0
\$425-\$440	25'	BO 2Q07		Closings	0	0	0	0	0	0	0	0	0	0
				Housing Inv	0	0	0	0	0	0	0	0	0	0.0
				VDL Inv	0	0	0	0	0	0	0	0	0	0.0
Castle Hills/Windhav (273)	DNW-Lewisvl			Starts	0	0	0	0	0	0	0	0	0	0
\$0-\$0	35'	Future		Closings	0	0	0	0	0	0	0	0	0	0
				Housing Inv	0	0	0	0	0	0	0	0	0	0.0
				VDL Inv	0	0	0	0	0	0	0	0	0	0.0
Castlewood (Highland (79)	DNW-HighVil			Starts	0	0	0	0	0	0	0	0	0	0
\$241-\$510	68'-120'	BO 4Q10		Closings	0	0	0	0	0	0	0	0	0	0
				Housing Inv	0	0	0	0	0	0	0	0	0	0.0
				VDL Inv	0	0	0	0	0	0	0	0	0	0.0
Cedar Creek Addition (132)	DNW-FlwrMnd			Starts	0	0	0	0	0	0	0	0	0	0
\$160-\$237	50'	BO 3Q06		Closings	0	0	0	0	0	0	0	0	0	0
				Housing Inv	0	0	0	0	0	0	0	0	0	0.0
				VDL Inv	0	0	0	0	0	0	0	0	0	0.0

Quarterly Activity & Inventory Report

Lewisville ISD

Sorted By Subdivision

Subdivision Name (Map No)	Sub Area	Price Range	Lot Size	Status	2Q21	3Q21	4Q21	1Q22	2Q22	3Q22	4Q22	1Q23	2Q23	Ann. Rates/ *Inv. Supply	
Chapel Creek Estates (60) \$260-\$393 200'	DNW-CCanyon BO 2Q00	Starts			0	0	0	0	0	0	0	0	0	0	
		Closings			0	0	0	0	0	0	0	0	0	0	0
		Housing Inv			0	0	0	0	0	0	0	0	0	0	0.0
		VDL Inv			0	0	0	0	0	0	0	0	0	0	0.0
Chapel Hill Addition (75) \$255-\$330 65'-85'	DNW-HighVil BO 4Q08	Starts			0	0	0	0	0	0	0	0	0	0	
		Closings			0	0	0	0	0	0	0	0	0	0	0
		Housing Inv			0	0	0	0	0	0	0	0	0	0	0.0
		VDL Inv			0	0	0	0	0	0	0	0	0	0	0.0
Chapel Springs (High) (62) \$326-\$500 65'-80'	DNW-HighVil BO 4Q14	Starts			0	0	0	0	0	0	0	0	0	0	
		Closings			0	0	0	0	0	0	0	0	0	0	0
		Housing Inv			0	0	0	0	0	0	0	0	0	0	0.0
		VDL Inv			0	0	0	0	0	0	0	0	0	0	0.0
Charles Ridge (310) \$400-\$550 24' Surani Homes	DNW-Carrltn Act 1Q23	Starts			0	0	0	0	0	0	0	0	0	0	
		Closings			0	0	0	0	0	0	0	0	0	0	0
		Housing Inv			0	0	0	0	0	0	0	0	0	0	0.0
		VDL Inv			0	0	0	0	0	0	0	0	24	24	n/a
Chase Oaks Addition (176) \$159-\$237 42'-53'	DNW-Lewisvl BO 1Q14	Starts			0	0	0	0	0	0	0	0	0	0	
		Closings			0	0	0	0	0	0	0	0	0	0	0
		Housing Inv			0	0	0	0	0	0	0	0	0	0	0.0
		VDL Inv			0	0	0	0	0	0	0	0	0	0	0.0
Chase Oaks Addition (177) \$174-\$231 25'	DNW-Lewisvl BO 1Q12	Starts			0	0	0	0	0	0	0	0	0	0	
		Closings			0	0	0	0	0	0	0	0	0	0	0
		Housing Inv			0	0	0	0	0	0	0	0	0	0	0.0
		VDL Inv			0	0	0	0	0	0	0	0	0	0	0.0
Chateau du Lac (10) \$1250-\$3000 187'-240' Calais Custom Homes/Malone Custom Builders	DNW-FlwrMnd Act 3Q00	Starts			0	0	0	1	0	0	1	1	0	2	
		Closings			1	0	0	0	1	2	0	0	0	2	
		Housing Inv			2	2	2	3	2	0	1	2	2	2	12.0 mos
		VDL Inv			8	8	8	7	7	7	6	5	5	5	30.0 mos
Chaucer Estates (115) \$206-\$254 68'-85'	DNW-FlwrMnd BO 1Q00	Starts			0	0	0	0	0	0	0	0	0	0	
		Closings			0	0	0	0	0	0	0	0	0	0	0
		Housing Inv			0	0	0	0	0	0	0	0	0	0	0.0
		VDL Inv			0	0	0	0	0	0	0	0	0	0	0.0
Chimney Rock (Flower) (1) \$759-\$1350 150'	DNW-FlwrMnd BO 3Q14	Starts			0	0	0	0	0	0	0	0	0	0	
		Closings			0	0	0	0	0	0	0	0	0	0	0
		Housing Inv			0	0	0	0	0	0	0	0	0	0	0.0
		VDL Inv			0	0	0	0	0	0	0	0	0	0	0.0
Churchill Crossing (83) \$171-\$230 70'-100'	DNW-FlwrMnd BO 1Q00	Starts			0	0	0	0	0	0	0	0	0	0	
		Closings			0	0	0	0	0	0	0	0	0	0	0
		Housing Inv			0	0	0	0	0	0	0	0	0	0	0.0
		VDL Inv			0	0	0	0	0	0	0	0	0	0	0.0
CMP Family Addition (14) \$2000-\$4000 307'	DNW-FlwrMnd BO 2Q20	Starts			0	0	0	0	0	0	0	0	0	0	
		Closings			0	0	0	0	0	0	0	0	0	0	0
		Housing Inv			0	0	0	0	0	0	0	0	0	0	0.0
		VDL Inv			0	0	0	0	0	0	0	0	0	0	0.0

Quarterly Activity & Inventory Report

Lewisville ISD

Sorted By Subdivision

Subdivision Name (Map No)	Sub Area	Price Range	Lot Size	Status	2Q21	3Q21	4Q21	1Q22	2Q22	3Q22	4Q22	1Q23	2Q23	Ann. Rates/ *Inv. Supply	
Coppell Greens (199) \$184-\$237 48'-65'	DNW-Coppell BO 2Q03	Starts			0	0	0	0	0	0	0	0	0	0	
		Closings			0	0	0	0	0	0	0	0	0	0	0
		Housing Inv			0	0	0	0	0	0	0	0	0	0	0.0
		VDL Inv			0	0	0	0	0	0	0	0	0	0	0.0
Copper Woods (40) \$420-\$905 458'	DNW-CCanyon BO 2Q08	Starts			0	0	0	0	0	0	0	0	0	0	
		Closings			0	0	0	0	0	0	0	0	0	0	0
		Housing Inv			0	0	0	0	0	0	0	0	0	0	0.0
		VDL Inv			0	0	0	0	0	0	0	0	0	0	0.0
Copperas Branch Addi (159) \$300-\$450 80' Pyland Custom Homes	DNW-HighVil Act 3Q03	Starts			0	0	0	0	0	0	0	0	0	0	
		Closings			0	0	0	0	0	0	0	0	0	0	0
		Housing Inv			0	0	0	0	0	0	0	0	0	0	0.0
		VDL Inv			9	9	9	9	9	9	9	9	9	9	n/a
Country Meadow Addit (90) \$152-\$197 50'	DNW-FlwrMnd BO 3Q01	Starts			0	0	0	0	0	0	0	0	0	0	
		Closings			0	0	0	0	0	0	0	0	0	0	0
		Housing Inv			0	0	0	0	0	0	0	0	0	0	0.0
		VDL Inv			0	0	0	0	0	0	0	0	0	0	0.0
Coyote Ridge (231) \$296-\$570 80'	DNW-Carrlltn BO 3Q06	Starts			0	0	0	0	0	0	0	0	0	0	
		Closings			0	0	0	0	0	0	0	0	0	0	0
		Housing Inv			0	0	0	0	0	0	0	0	0	0	0.0
		VDL Inv			0	0	0	0	0	0	0	0	0	0	0.0
Coyote Ridge/Grandvi (229) \$273-\$400 60'	DNW-Carrlltn BO 2Q03	Starts			0	0	0	0	0	0	0	0	0	0	
		Closings			0	0	0	0	0	0	0	0	0	0	0
		Housing Inv			0	0	0	0	0	0	0	0	0	0	0.0
		VDL Inv			0	0	0	0	0	0	0	0	0	0	0.0
Creekside Addn. (Car) (307) \$400-\$480 80'	DNW-Carrlltn BO 1Q07	Starts			0	0	0	0	0	0	0	0	0	0	
		Closings			0	0	0	0	0	0	0	0	0	0	0
		Housing Inv			0	0	0	0	0	0	0	0	0	0	0.0
		VDL Inv			0	0	0	0	0	0	0	0	0	0	0.0
Creekside at Austin (299) \$427-\$606 50'-60'	DNW-Colony BO 1Q20	Starts			0	0	0	0	0	0	0	0	0	0	
		Closings			0	0	0	0	0	0	0	0	0	0	0
		Housing Inv			0	0	0	0	0	0	0	0	0	0	0.0
		VDL Inv			0	0	0	0	0	0	0	0	0	0	0.0
Creekside at Heritag (149) \$619-\$960 80'	DNW-FlwrMnd BO 1Q22	Starts			2	0	0	0	0	0	0	0	0	0	
		Closings			5	2	1	3	0	0	0	0	0	0	0
		Housing Inv			6	4	3	0	0	0	0	0	0	0	0.0
		VDL Inv			0	0	0	0	0	0	0	0	0	0	0.0
Crescent Estates Add (178) \$355-\$455 50'	DNW-Lewisvl BO 2Q19	Starts			0	0	0	0	0	0	0	0	0	0	
		Closings			0	0	0	0	0	0	0	0	0	0	0
		Housing Inv			0	0	0	0	0	0	0	0	0	0	0.0
		VDL Inv			0	0	0	0	0	0	0	0	0	0	0.0
Cross Timbers (Dbl O) (11) \$189-\$330 150'-165'	DNW-DOak BO 2Q08	Starts			0	0	0	0	0	0	0	0	0	0	
		Closings			0	0	0	0	0	0	0	0	0	0	0
		Housing Inv			0	0	0	0	0	0	0	0	0	0	0.0
		VDL Inv			0	0	0	0	0	0	0	0	0	0	0.0

Quarterly Activity & Inventory Report

Lewisville ISD

Sorted By Subdivision

Subdivision Name (Map No)	Sub Area	Status	2Q21	3Q21	4Q21	1Q22	2Q22	3Q22	4Q22	1Q23	2Q23	Ann. Rates/ *Inv. Supply	
CT Simmons Addition (171) \$105-\$135 38'	DNW-Lewisvl BO 2Q05	Starts	0	0	0	0	0	0	0	0	0	0	
		Closings	0	0	0	0	0	0	0	0	0	0	0
		Housing Inv	0	0	0	0	0	0	0	0	0	0	0.0
		VDL Inv	0	0	0	0	0	0	0	0	0	0	0.0
Diamond Belle Estate (64) \$400-\$750 80'	DNW-FlwrMnd BO 4Q10	Starts	0	0	0	0	0	0	0	0	0	0	
		Closings	0	0	0	0	0	0	0	0	0	0	0
		Housing Inv	0	0	0	0	0	0	0	0	0	0	0.0
		VDL Inv	0	0	0	0	0	0	0	0	0	0	0.0
Diamond Creek Additi (311) \$550-\$700 146'	DNW-Carrlltn BO 2Q19	Starts	0	0	0	0	0	0	0	0	0	0	
		Closings	0	0	0	0	0	0	0	0	0	0	0
		Housing Inv	0	0	0	0	0	0	0	0	0	0	0.0
		VDL Inv	0	0	0	0	0	0	0	0	0	0	0.0
Diamond Hill (Lewisv (155) \$121-\$137 50'	DNW-Lewisvl BO 2Q00	Starts	0	0	0	0	0	0	0	0	0	0	
		Closings	0	0	0	0	0	0	0	0	0	0	0
		Housing Inv	0	0	0	0	0	0	0	0	0	0	0.0
		VDL Inv	0	0	0	0	0	0	0	0	0	0	0.0
Diamond Ridge (279) \$107-\$190 61'	DNW-Carrlltn BO 1Q01	Starts	0	0	0	0	0	0	0	0	0	0	
		Closings	0	0	0	0	0	0	0	0	0	0	0
		Housing Inv	0	0	0	0	0	0	0	0	0	0	0.0
		VDL Inv	0	0	0	0	0	0	0	0	0	0	0.0
District of Highland (99) \$282-\$355 40'	DNW-HighVil BO 3Q14	Starts	0	0	0	0	0	0	0	0	0	0	
		Closings	0	0	0	0	0	0	0	0	0	0	0
		Housing Inv	0	0	0	0	0	0	0	0	0	0	0.0
		VDL Inv	0	0	0	0	0	0	0	0	0	0	0.0
Dixon Estates (91) \$0-\$0 94'	DNW-FlwrMnd Future	Starts	0	0	0	0	0	0	0	0	0	0	
		Closings	0	0	0	0	0	0	0	0	0	0	0
		Housing Inv	0	0	0	0	0	0	0	0	0	0	0.0
		VDL Inv	0	0	0	0	0	0	0	0	0	0	0.0
Dominion Estates (FI (25) \$455-\$499 150'	DNW-FlwrMnd BO 2Q00	Starts	0	0	0	0	0	0	0	0	0	0	
		Closings	0	0	0	0	0	0	0	0	0	0	0
		Housing Inv	0	0	0	0	0	0	0	0	0	0	0.0
		VDL Inv	0	0	0	0	0	0	0	0	0	0	0.0
Dougherty Addition T (186) \$300-\$400 21'	DNW-Lewisvl BO 4Q21	Starts	0	0	0	0	0	0	0	0	0	0	
		Closings	0	0	2	0	0	0	0	0	0	0	0
		Housing Inv	2	2	0	0	0	0	0	0	0	0	0.0
		VDL Inv	0	0	0	0	0	0	0	0	0	0	0.0
Dove Creek (Lewisvil (143) \$300-\$600 132'	DNW-Lewisvl BO 2Q08	Starts	0	0	0	0	0	0	0	0	0	0	
		Closings	0	0	0	0	0	0	0	0	0	0	0
		Housing Inv	0	0	0	0	0	0	0	0	0	0	0.0
		VDL Inv	0	0	0	0	0	0	0	0	0	0	0.0
Edgewood (Flower Mou (140) \$650-\$685 65'	DNW-FlwrMnd BO 2Q20	Starts	0	0	0	0	0	0	0	0	0	0	
		Closings	0	0	0	0	0	0	0	0	0	0	0
		Housing Inv	0	0	0	0	0	0	0	0	0	0	0.0
		VDL Inv	0	0	0	0	0	0	0	0	0	0	0.0

Quarterly Activity & Inventory Report

Lewisville ISD

Sorted By Subdivision

Subdivision Name (Map No)	Sub Area	Status	2Q21	3Q21	4Q21	1Q22	2Q22	3Q22	4Q22	1Q23	2Q23	Ann. Rates/ *Inv. Supply	
Emerald Bay (21) \$610-\$650 180'	DNW-FlwrMnd BO 2Q05	Starts	0	0	0	0	0	0	0	0	0	0	
		Closings	0	0	0	0	0	0	0	0	0	0	
		Housing Inv	0	0	0	0	0	0	0	0	0	0	0.0
		VDL Inv	0	0	0	0	0	0	0	0	0	0	0.0
Emerald Place (142) \$0-\$0 80'	DNW-FlwrMnd Future	Starts	0	0	0	0	0	0	0	0	0	0	
		Closings	0	0	0	0	0	0	0	0	0	0	
		Housing Inv	0	0	0	0	0	0	0	0	0	0	0.0
		VDL Inv	0	0	0	0	0	0	0	0	0	0	0.0
Essex Park Townhomes (280) \$512-\$554 45'	DNW-Carrltn BO 2Q22	Starts	15	7	1	0	0	0	0	0	0	0	
		Closings	9	15	12	2	6	0	0	0	0	0	
		Housing Inv	27	19	8	6	0	0	0	0	0	0	0.0
		VDL Inv	8	1	0	0	0	0	0	0	0	0	0.0
Estancia Estates (54) \$475-\$616 80'	DNW-FlwrMnd BO 4Q19	Starts	0	0	0	0	0	0	0	0	0	0	
		Closings	0	0	0	0	0	0	0	0	0	0	
		Housing Inv	0	0	0	0	0	0	0	0	0	0	0.0
		VDL Inv	0	0	0	0	0	0	0	0	0	0	0.0
Estates @ Copper Can (39) \$750-\$950 190'	DNW-CCanyon BO 2Q08	Starts	0	0	0	0	0	0	0	0	0	0	
		Closings	0	0	0	0	0	0	0	0	0	0	
		Housing Inv	0	0	0	0	0	0	0	0	0	0	0.0
		VDL Inv	0	0	0	0	0	0	0	0	0	0	0.0
Estates at Lake Vist (228) \$327-\$410 52'	DNW-Coppell BO 3Q15	Starts	0	0	0	0	0	0	0	0	0	0	
		Closings	0	0	0	0	0	0	0	0	0	0	
		Housing Inv	0	0	0	0	0	0	0	0	0	0	0.0
		VDL Inv	0	0	0	0	0	0	0	0	0	0	0.0
Estates of Double Oa (23) \$410-\$500 150'	DNW-DOak BO 2Q04	Starts	0	0	0	0	0	0	0	0	0	0	
		Closings	0	0	0	0	0	0	0	0	0	0	
		Housing Inv	0	0	0	0	0	0	0	0	0	0	0.0
		VDL Inv	0	0	0	0	0	0	0	0	0	0	0.0
Estates of Flower Mo (89) \$244-\$293 80'	DNW-FlwrMnd BO 1Q02	Starts	0	0	0	0	0	0	0	0	0	0	
		Closings	0	0	0	0	0	0	0	0	0	0	
		Housing Inv	0	0	0	0	0	0	0	0	0	0	0.0
		VDL Inv	0	0	0	0	0	0	0	0	0	0	0.0
Estates of Indian Cr (236) \$365-\$424 50'	DNW-Carrltn BO 3Q16	Starts	0	0	0	0	0	0	0	0	0	0	
		Closings	0	0	0	0	0	0	0	0	0	0	
		Housing Inv	0	0	0	0	0	0	0	0	0	0	0.0
		VDL Inv	0	0	0	0	0	0	0	0	0	0	0.0
Estuary Pointe (17) \$0-\$0 150'	DNW-FlwrMnd Future	Starts	0	0	0	0	0	0	0	0	0	0	
		Closings	0	0	0	0	0	0	0	0	0	0	
		Housing Inv	0	0	0	0	0	0	0	0	0	0	0.0
		VDL Inv	0	0	0	0	0	0	0	0	0	0	0.0
Fairwater (291) \$664-\$685 65'	DNE-Frisco BO 2Q20	Starts	0	0	0	0	0	0	0	0	0	0	
		Closings	0	0	0	0	0	0	0	0	0	0	
		Housing Inv	0	0	0	0	0	0	0	0	0	0	0.0
		VDL Inv	0	0	0	0	0	0	0	0	0	0	0.0

Quarterly Activity & Inventory Report

Lewisville ISD

Sorted By Subdivision

Subdivision Name (Map No)	Sub Area	Price Range	Lot Size	Status	2Q21	3Q21	4Q21	1Q22	2Q22	3Q22	4Q22	1Q23	2Q23	Ann. Rates/ *Inv. Supply	
Fallbrook (145) \$275-\$290 80'	DNW-FlwrMnd BO 1Q04	Starts			0	0	0	0	0	0	0	0	0	0	
		Closings			0	0	0	0	0	0	0	0	0	0	0
		Housing Inv			0	0	0	0	0	0	0	0	0	0	0.0
		VDL Inv			0	0	0	0	0	0	0	0	0	0	0.0
Flower Mound Oaks (144) \$454-\$512 80'	DNW-FlwrMnd BO 1Q15	Starts			0	0	0	0	0	0	0	0	0	0	
		Closings			0	0	0	0	0	0	0	0	0	0	0
		Housing Inv			0	0	0	0	0	0	0	0	0	0	0.0
		VDL Inv			0	0	0	0	0	0	0	0	0	0	0.0
Flower Mound Woods (52) \$442-\$506 109'	DNW-FlwrMnd BO 4Q12	Starts			0	0	0	0	0	0	0	0	0	0	
		Closings			0	0	0	0	0	0	0	0	0	0	0
		Housing Inv			0	0	0	0	0	0	0	0	0	0	0.0
		VDL Inv			0	0	0	0	0	0	0	0	0	0	0.0
Forest Park Estates (84) \$150-\$200 65'	DNW-FlwrMnd BO 2Q00	Starts			0	0	0	0	0	0	0	0	0	0	
		Closings			0	0	0	0	0	0	0	0	0	0	0
		Housing Inv			0	0	0	0	0	0	0	0	0	0	0.0
		VDL Inv			0	0	0	0	0	0	0	0	0	0	0.0
Forest Vista Estates (119) \$550-\$700 85'	DNW-FlwrMnd BO 4Q22	Starts			0	0	1	0	0	0	0	0	0	0	
		Closings			0	0	0	0	0	0	1	0	0	0	1
		Housing Inv			0	0	1	1	1	1	0	0	0	0	0.0
		VDL Inv			1	1	0	0	0	0	0	0	0	0	0.0
Forums Residential, (97) \$223-\$245 95'	DNW-FlwrMnd BO 4Q08	Starts			0	0	0	0	0	0	0	0	0	0	
		Closings			0	0	0	0	0	0	0	0	0	0	0
		Housing Inv			0	0	0	0	0	0	0	0	0	0	0.0
		VDL Inv			0	0	0	0	0	0	0	0	0	0	0.0
Fox Creek Estates (194) \$154-\$195 63'-70'	DNW-Lewisvl BO 2Q01	Starts			0	0	0	0	0	0	0	0	0	0	
		Closings			0	0	0	0	0	0	0	0	0	0	0
		Housing Inv			0	0	0	0	0	0	0	0	0	0	0.0
		VDL Inv			0	0	0	0	0	0	0	0	0	0	0.0
Foxborough Hollow (124) \$260-\$265 90'	DNW-FlwrMnd BO 2Q00	Starts			0	0	0	0	0	0	0	0	0	0	
		Closings			0	0	0	0	0	0	0	0	0	0	0
		Housing Inv			0	0	0	0	0	0	0	0	0	0	0.0
		VDL Inv			0	0	0	0	0	0	0	0	0	0	0.0
Frisco 45 Townhomes (321) \$400-\$500 19'	DNE-Frisco Act 4Q22	Starts			0	0	0	0	0	0	0	0	0	0	
		Closings			0	0	0	0	0	0	0	0	0	0	0
		Housing Inv			0	0	0	0	0	0	0	0	0	0	0.0
		VDL Inv			0	0	0	0	0	0	0	29	29	29	n/a
Garden Park Place (156) \$132-\$183 53'	DNW-Lewisvl BO 1Q04	Starts			0	0	0	0	0	0	0	0	0	0	
		Closings			0	0	0	0	0	0	0	0	0	0	0
		Housing Inv			0	0	0	0	0	0	0	0	0	0	0.0
		VDL Inv			0	0	0	0	0	0	0	0	0	0	0.0
Garden Ridge Additio (158) \$115-\$120 40'-50'	DNW-Lewisvl BO 2Q01	Starts			0	0	0	0	0	0	0	0	0	0	
		Closings			0	0	0	0	0	0	0	0	0	0	0
		Housing Inv			0	0	0	0	0	0	0	0	0	0	0.0
		VDL Inv			0	0	0	0	0	0	0	0	0	0	0.0

Quarterly Activity & Inventory Report

Lewisville ISD

Sorted By Subdivision

Subdivision Name (Map No)	Sub Area	Price Range	Lot Size	Status	2Q21	3Q21	4Q21	1Q22	2Q22	3Q22	4Q22	1Q23	2Q23	Ann. Rates/ *Inv. Supply	
Garza Lake Estates (259) \$0-\$0 55'	DNW-Colony Future	Starts			0	0	0	0	0	0	0	0	0	0	
		Closings			0	0	0	0	0	0	0	0	0	0	0
		Housing Inv			0	0	0	0	0	0	0	0	0	0	0.0
		VDL Inv			0	0	0	0	0	0	0	0	0	0	0.0
Gates of Prestonwood (317) \$600-\$1000 80' J Anthony Custom Homes/J. Stiles/JD Smith Custom Homes/Laguna Homes	DNW-Carrltn Act 4Q02	Starts			0	0	0	0	0	0	0	0	0	0	
		Closings			0	0	1	0	0	0	0	0	0	0	0
		Housing Inv			1	1	0	0	0	0	0	0	0	0	0.0
		VDL Inv			1	1	1	1	1	1	1	1	1	1	n/a
Grace Park (44) \$1100-\$1130 87'-100' Taylor Morrison	DNW-FlwrMnd Act 1Q23	Starts			0	0	0	0	0	0	0	0	0	0	
		Closings			0	0	0	0	0	0	0	0	0	0	0
		Housing Inv			0	0	0	0	0	0	0	0	0	0	0.0
		VDL Inv			0	0	0	0	0	0	0	0	20	20	n/a
Grand Park Estates (116) \$310-\$406 80'	DNW-FlwrMnd BO 4Q07	Starts			0	0	0	0	0	0	0	0	0	0	
		Closings			0	0	0	0	0	0	0	0	0	0	0
		Housing Inv			0	0	0	0	0	0	0	0	0	0	0.0
		VDL Inv			0	0	0	0	0	0	0	0	0	0	0.0
Great Lakes Crossing (167) \$0-\$0 50'	DNW-Lewisvl Future	Starts			0	0	0	0	0	0	0	0	0	0	
		Closings			0	0	0	0	0	0	0	0	0	0	0
		Housing Inv			0	0	0	0	0	0	0	0	0	0	0.0
		VDL Inv			0	0	0	0	0	0	0	0	0	0	0.0
Greenvalley Addition (173) \$300-\$400 20'	DNW-Lewisvl Act 4Q20	Starts			0	0	0	0	0	0	0	0	0	0	
		Closings			0	6	0	0	0	0	0	0	0	0	0
		Housing Inv			6	0	0	0	0	0	0	0	0	0	0.0
		VDL Inv			0	0	0	0	4	4	4	4	4	4	n/a
Greenway Park (241) \$178-\$397 65'-80'	DNW-Carrltn BO 2Q03	Starts			0	0	0	0	0	0	0	0	0	0	
		Closings			0	0	0	0	0	0	0	0	0	0	0
		Housing Inv			0	0	0	0	0	0	0	0	0	0	0.0
		VDL Inv			0	0	0	0	0	0	0	0	0	0	0.0
Hamilton Park (287) \$422-\$422 45'	DNW-Carrltn BO 3Q21	Starts			0	0	0	0	0	0	0	0	0	0	
		Closings			0	4	0	0	0	0	0	0	0	0	0
		Housing Inv			4	0	0	0	0	0	0	0	0	0	0.0
		VDL Inv			0	0	0	0	0	0	0	0	0	0	0.0
Harris Street Townho (209) \$300-\$300 30'	DNW-Lewisvl BO 4Q21	Starts			0	0	4	0	0	0	0	0	0	0	
		Closings			0	0	4	0	0	0	0	0	0	0	0
		Housing Inv			0	0	0	0	0	0	0	0	0	0	0.0
		VDL Inv			0	0	0	0	0	0	0	0	0	0	0.0
Hawthorne (118) \$435-\$532 70'	DNW-FlwrMnd BO 2Q16	Starts			0	0	0	0	0	0	0	0	0	0	
		Closings			0	0	0	0	0	0	0	0	0	0	0
		Housing Inv			0	0	0	0	0	0	0	0	0	0	0.0
		VDL Inv			0	0	0	0	0	0	0	0	0	0	0.0
Hearthstone @ Firewh (117) \$147-\$180 50'	DNW-FlwrMnd BO 3Q05	Starts			0	0	0	0	0	0	0	0	0	0	
		Closings			0	0	0	0	0	0	0	0	0	0	0
		Housing Inv			0	0	0	0	0	0	0	0	0	0	0.0
		VDL Inv			0	0	0	0	0	0	0	0	0	0	0.0

Quarterly Activity & Inventory Report

Lewisville ISD

Sorted By Subdivision

Subdivision Name (Map No)	Sub Area	Status	2Q21	3Q21	4Q21	1Q22	2Q22	3Q22	4Q22	1Q23	2Q23	Ann. Rates/ *Inv. Supply
Hedrick Estates (169)	DNW-Lewisvl	Starts	0	0	0	0	0	0	0	0	0	0
\$134-\$140	50'	BO 1Q01	0	0	0	0	0	0	0	0	0	0
		Closings	0	0	0	0	0	0	0	0	0	0
		Housing Inv	0	0	0	0	0	0	0	0	0	0.0
		VDL Inv	0	0	0	0	0	0	0	0	0	0.0
Heritage Hill (Lewis (202))	DNW-Lewisvl	Starts	0	0	0	0	0	0	0	0	0	0
\$145-\$164	35'	BO 2Q07	0	0	0	0	0	0	0	0	0	0
		Closings	0	0	0	0	0	0	0	0	0	0
		Housing Inv	0	0	0	0	0	0	0	0	0	0.0
		VDL Inv	0	0	0	0	0	0	0	0	0	0.0
Heritage Square Addi (197)	DNW-Lewisvl	Starts	0	0	0	0	0	0	0	0	0	0
\$140-\$180	35'	BO 4Q09	0	0	0	0	0	0	0	0	0	0
		Closings	0	0	0	0	0	0	0	0	0	0
		Housing Inv	0	0	0	0	0	0	0	0	0	0.0
		VDL Inv	0	0	0	0	0	0	0	0	0	0.0
Heritage Trails Addi (172)	DNW-Lewisvl	Starts	26	11	26	36	22	43	45	0	0	88
\$400-\$474	24'-32'	Act 1Q21	0	0	32	29	49	27	28	55	28	138
Gehan Homes		Housing Inv	66	77	71	78	51	67	84	29	1	0.1 mos
		VDL Inv	182	171	107	77	55	12	0	0	0	0.0
Heritage West (127)	DNW-FlwrMnd	Starts	0	0	0	8	21	0	0	1	0	1
\$1000-\$1200	70'	Act 4Q21	0	0	0	0	0	0	7	21	1	29
Toll Brothers Inc		Housing Inv	0	0	0	8	29	29	22	2	1	0.4 mos
		VDL Inv	0	0	30	22	1	1	1	0	0	0.0
Hickory Springs at F (94)	DNW-FlwrMnd	Starts	0	0	0	0	0	0	0	0	0	0
\$322-\$382	94'	BO 4Q07	0	0	0	0	0	0	0	0	0	0
		Closings	0	0	0	0	0	0	0	0	0	0
		Housing Inv	0	0	0	0	0	0	0	0	0	0.0
		VDL Inv	0	0	0	0	0	0	0	0	0	0.0
Hidden Creek Estates (34)	DNW-CCanyon	Starts	0	0	0	0	0	0	3	0	0	3
\$850-\$1000	250'	Act 2Q08	0	0	0	0	0	0	0	3	0	3
Precision Builders		Housing Inv	0	0	0	0	0	0	3	0	0	0.0
		VDL Inv	8	8	8	8	8	8	3	3	3	12.0 mos
Hidden Island (237)	DNW-Carrltn	Starts	0	0	0	0	0	0	0	0	0	0
\$210-\$280	65'	BO 3Q06	0	0	0	0	0	0	0	0	0	0
		Closings	0	0	0	0	0	0	0	0	0	0
		Housing Inv	0	0	0	0	0	0	0	0	0	0.0
		VDL Inv	0	0	0	0	0	0	0	0	0	0.0
Hidden Valley Estate (8)	DNW-FlwrMnd	Starts	0	0	0	0	0	0	0	0	0	0
\$160-\$550	100'-224'	BO 2Q08	0	0	0	0	0	0	0	0	0	0
		Closings	0	0	0	0	0	0	0	0	0	0
		Housing Inv	0	0	0	0	0	0	0	0	0	0.0
		VDL Inv	0	0	0	0	0	0	0	0	0	0.0
High Meadow (Flower (2))	DNW-FlwrMnd	Starts	0	0	0	0	0	0	0	0	0	0
\$700-\$963	120'	BO 4Q20	0	0	0	0	0	0	0	0	0	0
		Closings	0	0	0	0	0	0	0	0	0	0
		Housing Inv	0	0	0	0	0	0	0	0	0	0.0
		VDL Inv	0	0	0	0	0	0	0	0	0	0.0
Highland Court (78)	DNW-FlwrMnd	Starts	0	0	0	0	0	0	0	0	0	0
\$471-\$656	50'-70'	BO 1Q21	0	0	0	0	0	0	0	0	0	0
		Closings	0	0	0	0	0	0	0	0	0	0
		Housing Inv	0	0	0	0	0	0	0	0	0	0.0
		VDL Inv	0	0	0	0	0	0	0	0	0	0.0

Dallas/Ft. Worth Residential Survey (2Q23)

Copyright Metrostudy

Page 11 of 31



*Inventory Supply = Housing Inv/(Annual Closings/12)
Vacant Developed Lot Supply = VDL Inv/(Annual Starts/12)

N/A indicates Inventory is present but cannot calculate months of supply without starts or closings (see above).

Quarterly Activity & Inventory Report

Lewisville ISD

Sorted By Subdivision

Subdivision Name (Map No)	Sub Area	Price Range	Lot Size	Status	2Q21	3Q21	4Q21	1Q22	2Q22	3Q22	4Q22	1Q23	2Q23	Ann. Rates/ *Inv. Supply	
Highland Lakes (Lewi (164)) \$200-\$235 60'-61'	DNW-Lewisvl BO 2Q01	Starts			0	0	0	0	0	0	0	0	0	0	
		Closings			0	0	0	0	0	0	0	0	0	0	0
		Housing Inv			0	0	0	0	0	0	0	0	0	0	0.0
		VDL Inv			0	0	0	0	0	0	0	0	0	0	0.0
Highland Oaks (Highl (70)) \$729-\$754 95'	DNW-HighVil BO 4Q22	Starts			0	0	1	0	0	0	0	0	0	0	
		Closings			0	0	0	0	0	0	1	0	0	0	1
		Housing Inv			0	0	1	1	1	1	1	0	0	0	0.0
		VDL Inv			1	1	0	0	0	0	0	0	0	0	0.0
Highland Shores (77) \$251-\$750 60'-110' <i>Fountain Custom Homes/Timcrest Homes</i>	DNW-HighVil Act 2Q84	Starts			0	0	1	0	0	0	2	0	0	2	
		Closings			0	0	0	0	0	0	1	0	0	0	1
		Housing Inv			0	0	1	1	1	1	1	2	2	2	24.0 mos
		VDL Inv			5	5	4	4	3	3	3	1	1	1	6.0 mos
Highland Terraces (L (212)) \$366-\$391 36'	DNW-Lewisvl BO 4Q21	Starts			0	1	0	0	0	0	0	0	0	0	
		Closings			0	1	1	0	0	0	0	0	0	0	0
		Housing Inv			1	1	0	0	0	0	0	0	0	0	0.0
		VDL Inv			1	0	0	0	0	0	0	0	0	0	0.0
Highlands/The (Lewis (147)) \$95-\$274 70'-100'	DNW-Lewisvl BO 2Q07	Starts			0	0	0	0	0	0	0	0	0	0	
		Closings			0	0	0	0	0	0	0	0	0	0	0
		Housing Inv			0	0	0	0	0	0	0	0	0	0	0.0
		VDL Inv			0	0	0	0	0	0	0	0	0	0	0.0
Highpoint Oaks Est. (201) \$336-\$540 50'	DNW-Lewisvl BO 4Q18	Starts			0	0	0	0	0	0	0	0	0	0	
		Closings			0	0	0	0	0	0	0	0	0	0	0
		Housing Inv			0	0	0	0	0	0	0	0	0	0	0.0
		VDL Inv			0	0	0	0	0	0	0	0	0	0	0.0
Hills @ Prestonwood (327) \$346-\$545 75'-90'	DNE-Plano BO 4Q01	Starts			0	0	0	0	0	0	0	0	0	0	
		Closings			0	0	0	0	0	0	0	0	0	0	0
		Housing Inv			0	0	0	0	0	0	0	0	0	0	0.0
		VDL Inv			0	0	0	0	0	0	0	0	0	0	0.0
Hills @ Prestonwood (330) \$309-\$370 50'	DNE-Plano BO 4Q00	Starts			0	0	0	0	0	0	0	0	0	0	
		Closings			0	0	0	0	0	0	0	0	0	0	0
		Housing Inv			0	0	0	0	0	0	0	0	0	0	0.0
		VDL Inv			0	0	0	0	0	0	0	0	0	0	0.0
Hills @ Prestonwood (319) \$242-\$401 75'-90'	DNE-Plano BO 2Q01	Starts			0	0	0	0	0	0	0	0	0	0	
		Closings			0	0	0	0	0	0	0	0	0	0	0
		Housing Inv			0	0	0	0	0	0	0	0	0	0	0.0
		VDL Inv			0	0	0	0	0	0	0	0	0	0	0.0
Hills @ Prestonwood (316) \$285-\$550 50'	DNE-Plano BO 3Q02	Starts			0	0	0	0	0	0	0	0	0	0	
		Closings			0	0	0	0	0	0	0	0	0	0	0
		Housing Inv			0	0	0	0	0	0	0	0	0	0	0.0
		VDL Inv			0	0	0	0	0	0	0	0	0	0	0.0
Hills at Indian Cree (238) \$315-\$447 52'-62'	DNW-Carrlltn BO 4Q15	Starts			0	0	0	0	0	0	0	0	0	0	
		Closings			0	0	0	0	0	0	0	0	0	0	0
		Housing Inv			0	0	0	0	0	0	0	0	0	0	0.0
		VDL Inv			0	0	0	0	0	0	0	0	0	0	0.0

Quarterly Activity & Inventory Report

Lewisville ISD

Sorted By Subdivision

Subdivision Name (Map No)	Sub Area	Status	2Q21	3Q21	4Q21	1Q22	2Q22	3Q22	4Q22	1Q23	2Q23	Ann. Rates/ *Inv. Supply	
Hills of Preston Cre (332) \$450-\$470 75'-100'	DNE-Plano BO 2Q01	Starts	0	0	0	0	0	0	0	0	0	0	
		Closings	0	0	0	0	0	0	0	0	0	0	0
		Housing Inv	0	0	0	0	0	0	0	0	0	0	0.0
		VDL Inv	0	0	0	0	0	0	0	0	0	0	0.0
Hills of Vista Ridge (217) \$336-\$421 50'	DNW-Lewisvl BO 4Q17	Starts	0	0	0	0	0	0	0	0	0	0	
		Closings	0	0	0	0	0	0	0	0	0	0	0
		Housing Inv	0	0	0	0	0	0	0	0	0	0	0.0
		VDL Inv	0	0	0	0	0	0	0	0	0	0	0.0
Hillside of Flower M (5) \$700-\$1200 110' <i>Nix Custom Homes/Rembert Custom Builders/Victor Myers Custom Homes</i>	DNW-FlwrMnd Act 2Q18	Starts	3	0	0	1	5	0	5	2	2	9	
		Closings	2	0	0	2	3	1	2	1	2	6	
		Housing Inv	3	3	3	2	4	3	6	7	7	14.0 mos	
		VDL Inv	19	19	19	18	13	13	8	6	4	5.3 mos	
Homestead @ Carrollt (274) \$192-\$600 55'-127'	DNW-Carrlltn BO 2Q08	Starts	0	0	0	0	0	0	0	0	0	0	
		Closings	0	0	0	0	0	0	0	0	0	0	0
		Housing Inv	0	0	0	0	0	0	0	0	0	0	0.0
		VDL Inv	0	0	0	0	0	0	0	0	0	0	0.0
Hunter's Glen (Flowe (120) \$539-\$680 85'	DNW-FlwrMnd BO 4Q18	Starts	0	0	0	0	0	0	0	0	0	0	
		Closings	0	0	0	0	0	0	0	0	0	0	0
		Housing Inv	0	0	0	0	0	0	0	0	0	0	0.0
		VDL Inv	0	0	0	0	0	0	0	0	0	0	0.0
Hunters Glen (Lewisv (175) \$60-\$144 40'	DNW-Lewisvl BO 3Q00	Starts	0	0	0	0	0	0	0	0	0	0	
		Closings	0	0	0	0	0	0	0	0	0	0	0
		Housing Inv	0	0	0	0	0	0	0	0	0	0	0.0
		VDL Inv	0	0	0	0	0	0	0	0	0	0	0.0
Immel Estates (4) \$549-\$563 200'-216'	DNW-FlwrMnd BO 3Q04	Starts	0	0	0	0	0	0	0	0	0	0	
		Closings	0	0	0	0	0	0	0	0	0	0	0
		Housing Inv	0	0	0	0	0	0	0	0	0	0	0.0
		VDL Inv	0	0	0	0	0	0	0	0	0	0	0.0
Indian Creek Meadows (276) \$147-\$190 50'	DNW-Carrlltn BO 2Q03	Starts	0	0	0	0	0	0	0	0	0	0	
		Closings	0	0	0	0	0	0	0	0	0	0	0
		Housing Inv	0	0	0	0	0	0	0	0	0	0	0.0
		VDL Inv	0	0	0	0	0	0	0	0	0	0	0.0
Indian Creek/Cedar E (233) \$160-\$229 65'-80'	DNW-Carrlltn BO 2Q01	Starts	0	0	0	0	0	0	0	0	0	0	
		Closings	0	0	0	0	0	0	0	0	0	0	0
		Housing Inv	0	0	0	0	0	0	0	0	0	0	0.0
		VDL Inv	0	0	0	0	0	0	0	0	0	0	0.0
Indian Creek/Elm Woo (232) \$173-\$229 65'-73'	DNW-Carrlltn BO 4Q01	Starts	0	0	0	0	0	0	0	0	0	0	
		Closings	0	0	0	0	0	0	0	0	0	0	0
		Housing Inv	0	0	0	0	0	0	0	0	0	0	0.0
		VDL Inv	0	0	0	0	0	0	0	0	0	0	0.0
Indian Creek/Indian (235) \$188-\$243 65'	DNW-Carrlltn BO 4Q02	Starts	0	0	0	0	0	0	0	0	0	0	
		Closings	0	0	0	0	0	0	0	0	0	0	0
		Housing Inv	0	0	0	0	0	0	0	0	0	0	0.0
		VDL Inv	0	0	0	0	0	0	0	0	0	0	0.0

Quarterly Activity & Inventory Report

Lewisville ISD

Sorted By Subdivision

Subdivision Name (Map No)	Sub Area	Status	2Q21	3Q21	4Q21	1Q22	2Q22	3Q22	4Q22	1Q23	2Q23	Ann. Rates/ *Inv. Supply	
Indian Creek/Oakwood (230) \$168-\$197 65'	DNW-Carrltn BO 2Q01	Starts	0	0	0	0	0	0	0	0	0	0	
		Closings	0	0	0	0	0	0	0	0	0	0	0
		Housing Inv	0	0	0	0	0	0	0	0	0	0	0.0
		VDL Inv	0	0	0	0	0	0	0	0	0	0	0.0
Kathryn Commons Addn (214) \$140-\$180 17'	DNW-Lewisvl BO 2Q12	Starts	0	0	0	0	0	0	0	0	0	0	
		Closings	0	0	0	0	0	0	0	0	0	0	0
		Housing Inv	0	0	0	0	0	0	0	0	0	0	0.0
		VDL Inv	0	0	0	0	0	0	0	0	0	0	0.0
Kensington Park Esta (16) \$900-\$950 290'	DNW-FlwrMnd BO 4Q01	Starts	0	0	0	0	0	0	0	0	0	0	
		Closings	0	0	0	0	0	0	0	0	0	0	0
		Housing Inv	0	0	0	0	0	0	0	0	0	0	0.0
		VDL Inv	0	0	0	0	0	0	0	0	0	0	0.0
Kensington Place (305) \$632-\$1028 50'-70' <i>Darling Homes/K. Hovnanian Homes</i>	DNW-Carrltn Act 4Q21	Starts	0	0	0	1	14	27	24	13	11	75	
		Closings	0	0	0	0	0	0	6	18	30	54	
		Housing Inv	0	0	0	1	15	42	60	55	36	8.0 mos	
		VDL Inv	0	0	95	94	81	54	30	17	6	1.0 mos	
Kings Gate (Plano) (324) \$1900-\$6500 162'	DNE-Plano Act 1Q96	Starts	0	0	2	0	0	0	0	0	0	0	
		Closings	0	0	0	0	0	0	0	0	0	0	
		Housing Inv	1	1	3	3	3	3	3	3	3	n/a	
		VDL Inv	4	4	2	2	2	3	3	3	3	n/a	
Kings Grant Addition (255) \$399-\$409 53'-55'	DNW-Lewisvl BO 1Q15	Starts	0	0	0	0	0	0	0	0	0	0	
		Closings	0	0	0	0	0	0	0	0	0	0	0
		Housing Inv	0	0	0	0	0	0	0	0	0	0	0.0
		VDL Inv	0	0	0	0	0	0	0	0	0	0	0.0
Kings Ridge Addition (314) \$269-\$1380 50'-90'	DNE-Plano BO 2Q17	Starts	0	0	0	0	0	0	0	0	0	0	
		Closings	0	0	0	0	0	0	0	0	0	0	0
		Housing Inv	0	0	0	0	0	0	0	0	0	0	0.0
		VDL Inv	0	0	0	0	0	0	0	0	0	0	0.0
Ladera Highland Vill (61) \$358-\$469 42'	DNW-HighVil BO 3Q21	Starts	4	0	0	0	0	0	0	0	0	0	
		Closings	6	8	0	0	0	0	0	0	0	0	0
		Housing Inv	8	0	0	0	0	0	0	0	0	0	0.0
		VDL Inv	0	0	0	0	0	0	0	0	0	0	0.0
Lake Forest Estates (76) \$230-\$276 75'-77'	DNW-FlwrMnd BO 1Q02	Starts	0	0	0	0	0	0	0	0	0	0	
		Closings	0	0	0	0	0	0	0	0	0	0	0
		Housing Inv	0	0	0	0	0	0	0	0	0	0	0.0
		VDL Inv	0	0	0	0	0	0	0	0	0	0	0.0
Lake Hill Estates (7) \$300-\$305 145'	DNW-FlwrMnd BO 2Q01	Starts	0	0	0	0	0	0	0	0	0	0	
		Closings	0	0	0	0	0	0	0	0	0	0	0
		Housing Inv	0	0	0	0	0	0	0	0	0	0	0.0
		VDL Inv	0	0	0	0	0	0	0	0	0	0	0.0
Lakemont Addition (98) \$289-\$315 95'	DNW-FlwrMnd BO 3Q05	Starts	0	0	0	0	0	0	0	0	0	0	
		Closings	0	0	0	0	0	0	0	0	0	0	0
		Housing Inv	0	0	0	0	0	0	0	0	0	0	0.0
		VDL Inv	0	0	0	0	0	0	0	0	0	0	0.0

Quarterly Activity & Inventory Report

Lewisville ISD

Sorted By Subdivision

Subdivision Name (Map No)	Sub Area	Status	2Q21	3Q21	4Q21	1Q22	2Q22	3Q22	4Q22	1Q23	2Q23	Ann. Rates/ *Inv. Supply
Lakeridge Townhomes (247)	DNW-Lewisvl	Starts	0	0	0	0	0	0	0	0	0	0
\$256-\$270	22'	Act 2Q06	Closings	0	0	0	0	0	0	0	0	0
<i>Sumeer Homes</i>		Housing Inv	0	0	0	0	0	0	0	0	0	0.0
		VDL Inv	1	1	1	1	1	1	1	1	1	n/a
Lakes Legacy/Heritag (313)	DNE-Frisco	Starts	0	0	0	0	0	0	0	0	0	0
\$212-\$412	50'-70'	BO 2Q07	Closings	0	0	0	0	0	0	0	0	0
		Housing Inv	0	0	0	0	0	0	0	0	0	0.0
		VDL Inv	0	0	0	0	0	0	0	0	0	0.0
Lakes Legacy/Lakehil (328)	DNE-Frisco	Starts	0	0	0	0	0	0	0	0	0	0
\$284-\$423	65'-78'	BO 3Q03	Closings	0	0	0	0	0	0	0	0	0
		Housing Inv	0	0	0	0	0	0	0	0	0	0.0
		VDL Inv	0	0	0	0	0	0	0	0	0	0.0
Lakes Legacy/The Lak (326)	DNE-Frisco	Starts	0	0	0	0	0	0	0	0	0	0
\$525-\$1250	77'	BO 1Q12	Closings	0	0	0	0	0	0	0	0	0
		Housing Inv	0	0	0	0	0	0	0	0	0	0.0
		VDL Inv	0	0	0	0	0	0	0	0	0	0.0
Lakes Legacy/The Vil (323)	DNE-Frisco	Starts	0	0	0	0	0	0	0	0	0	0
\$269-\$725	55'	BO 4Q15	Closings	0	0	0	0	0	0	0	0	0
		Housing Inv	0	0	0	0	0	0	0	0	0	0.0
		VDL Inv	0	0	0	0	0	0	0	0	0	0.0
Lakeside Center Town (104)	DNW-FlwrMnd	Starts	0	8	0	0	0	0	0	0	0	0
\$500-\$600	27'	BO 2Q22	Closings	0	0	0	0	8	0	0	0	0
		Housing Inv	0	8	8	8	0	0	0	0	0	0.0
		VDL Inv	0	0	0	0	0	0	0	0	0	0.0
Lakeside Crossing To (105)	DNW-FlwrMnd	Starts	4	0	0	0	0	0	6	0	0	6
\$660-\$765	32'	BO 2Q23	Closings	0	5	0	0	0	4	1	5	10
		Housing Inv	9	4	4	4	4	4	6	5	0	0.0
		VDL Inv	6	6	6	6	6	6	0	0	0	0.0
Lakeside DFW (Flower) (86)	DNW-FlwrMnd	Starts	0	0	0	0	0	0	0	0	0	0
\$382-\$976	30'-65'	BO 4Q17	Closings	0	0	0	0	0	0	0	0	0
		Housing Inv	0	0	0	0	0	0	0	0	0	0.0
		VDL Inv	0	0	0	0	0	0	0	0	0	0.0
Lakeside Tower (92)	DNW-FlwrMnd	Starts	0	0	0	0	0	0	0	0	0	0
\$1152-\$3854		Act 2Q19	Closings	5	1	1	0	0	1	2	0	3
		Housing Inv	6	5	4	4	4	3	1	1	1	4.0 mos
		VDL Inv	0	0	0	0	0	0	0	0	0	0.0
Lakeside Village (102)	DNW-FlwrMnd	Starts	0	0	0	0	0	0	0	2	2	4
\$1000-\$1250	40'	Act 4Q21	Closings	0	0	0	0	0	0	0	0	0
<i>VanTrease Architectural Design</i>		Housing Inv	0	0	0	0	0	0	0	2	4	n/a
		VDL Inv	0	0	57	57	57	57	57	55	53	159.0 mos
Lakeside Villas (96)	DNW-FlwrMnd	Starts	0	0	0	0	7	0	0	0	0	0
\$650-\$750	35'	BO 2Q23	Closings	0	0	0	0	0	0	0	7	7
		Housing Inv	0	0	0	0	7	7	7	7	0	0.0
		VDL Inv	0	0	0	7	0	0	0	0	0	0.0

Dallas/Ft. Worth Residential Survey (2Q23)

Copyright Metrostudy

Page 15 of 31



*Inventory Supply = Housing Inv/(Annual Closings/12)
Vacant Developed Lot Supply = VDL Inv/(Annual Starts/12)

N/A indicates Inventory is present but cannot calculate months of supply without starts or closings (see above).

Quarterly Activity & Inventory Report

Lewisville ISD

Sorted By Subdivision

Subdivision Name (Map No)	Sub Area	Price Range	Lot Size	Status	2Q21	3Q21	4Q21	1Q22	2Q22	3Q22	4Q22	1Q23	2Q23	Ann. Rates/ *Inv. Supply	
Lakewood (Flower Mou (126)) \$0-\$0 31'-50'	DNW-FlwrMnd Future	Starts			0	0	0	0	0	0	0	0	0	0	
		Closings			0	0	0	0	0	0	0	0	0	0	0
		Housing Inv			0	0	0	0	0	0	0	0	0	0	0.0
		VDL Inv			0	0	0	0	0	0	0	0	0	0	0.0
Lakewood Addition (H (88)) \$270-\$350 150'	DNW-HighVil BO 1Q00	Starts			0	0	0	0	0	0	0	0	0	0	
		Closings			0	0	0	0	0	0	0	0	0	0	0
		Housing Inv			0	0	0	0	0	0	0	0	0	0	0.0
		VDL Inv			0	0	0	0	0	0	0	0	0	0	0.0
Lakewood Hills Addit (277) \$573-\$825 50'-80' <i>Beazer Homes/Lennar Homes/Pulte Homes</i>	DNW-Lewisvl Act 4Q17	Starts			13	33	25	18	36	31	13	87	15	146	
		Closings			4	7	4	10	34	15	26	50	46	137	
		Housing Inv			23	49	70	78	80	96	83	120	89	7.8 mos	
		VDL Inv			36	33	184	181	141	114	100	19	5	0.4 mos	
Landing @ Northshore (9) \$920-\$2800 240'-283'	DNW-FlwrMnd BO 4Q18	Starts			0	0	0	0	0	0	0	0	0	0	
		Closings			0	0	0	0	0	0	0	0	0	0	
		Housing Inv			0	0	0	0	0	0	0	0	0	0	0.0
		VDL Inv			0	0	0	0	0	0	0	0	0	0	0.0
Larry Ho Addition (193) \$0-\$0 21'	DNW-Lewisvl Future	Starts			0	0	0	0	0	0	0	0	0	0	
		Closings			0	0	0	0	0	0	0	0	0	0	0
		Housing Inv			0	0	0	0	0	0	0	0	0	0	0.0
		VDL Inv			0	0	0	0	0	0	0	0	0	0	0.0
Legends, The (Colony (296)) \$136-\$252 40'-80'	DNW-Colony BO 4Q06	Starts			0	0	0	0	0	0	0	0	0	0	
		Closings			0	0	0	0	0	0	0	0	0	0	0
		Housing Inv			0	0	0	0	0	0	0	0	0	0	0.0
		VDL Inv			0	0	0	0	0	0	0	0	0	0	0.0
Legends, The (Flower (59)) \$418-\$445 50' <i>Village Builders Inc</i>	DNW-FlwrMnd Act 1Q15	Starts			0	0	0	0	0	0	0	0	0	0	
		Closings			0	0	0	0	0	0	0	0	0	0	0
		Housing Inv			0	0	0	0	0	0	0	0	0	0	0.0
		VDL Inv			1	1	1	1	1	1	1	1	1	1	n/a
Lexington Glen (146) \$149-\$179 40'	DNW-FlwrMnd BO 2Q06	Starts			0	0	0	0	0	0	0	0	0	0	
		Closings			0	0	0	0	0	0	0	0	0	0	0
		Housing Inv			0	0	0	0	0	0	0	0	0	0	0.0
		VDL Inv			0	0	0	0	0	0	0	0	0	0	0.0
Liberty Park (26) \$600-\$900 70'	DNW-FlwrMnd BO 4Q21	Starts			0	0	0	0	0	0	0	0	0	0	
		Closings			0	0	1	0	0	0	0	0	0	0	0
		Housing Inv			1	1	0	0	0	0	0	0	0	0	0.0
		VDL Inv			0	0	0	0	0	0	0	0	0	0	0.0
Magnolia Court (133) \$623-\$725 80'	DNW-FlwrMnd BO 4Q21	Starts			13	0	0	0	0	0	0	0	0	0	
		Closings			11	1	16	0	0	0	0	0	0	0	0
		Housing Inv			17	16	0	0	0	0	0	0	0	0	0.0
		VDL Inv			0	0	0	0	0	0	0	0	0	0	0.0
Magnolia Park (Flowe (31)) \$693-\$800 85'	DNW-FlwrMnd BO 4Q18	Starts			0	0	0	0	0	0	0	0	0	0	
		Closings			0	0	0	0	0	0	0	0	0	0	0
		Housing Inv			0	0	0	0	0	0	0	0	0	0	0.0
		VDL Inv			0	0	0	0	0	0	0	0	0	0	0.0

Quarterly Activity & Inventory Report

Lewisville ISD

Sorted By Subdivision

Subdivision Name (Map No)	Sub Area	Price Range	Lot Size	Status	2Q21	3Q21	4Q21	1Q22	2Q22	3Q22	4Q22	1Q23	2Q23	Ann. Rates/ *Inv. Supply	
Main Street Village (213) \$139-\$158 22'	DNW-Lewisvl BO 1Q08	Starts			0	0	0	0	0	0	0	0	0	0	
		Closings			0	0	0	0	0	0	0	0	0	0	0
		Housing Inv			0	0	0	0	0	0	0	0	0	0	0.0
		VDL Inv			0	0	0	0	0	0	0	0	0	0	0.0
Mallard Cove Estates (136) \$210-\$320 84'	DNW-FlwrMnd BO 3Q08	Starts			0	0	0	0	0	0	0	0	0	0	
		Closings			0	0	0	0	0	0	0	0	0	0	0
		Housing Inv			0	0	0	0	0	0	0	0	0	0	0.0
		VDL Inv			0	0	0	0	0	0	0	0	0	0	0.0
Manors at Forestbroo (211) \$335-\$390 26' <i>North American Land Company</i>	DNW-Lewisvl Act 4Q18	Starts			9	11	4	1	6	8	7	0	6	21	
		Closings			11	0	13	0	0	0	4	19	1	24	
		Housing Inv			24	35	26	27	33	41	44	25	30	15.0 mos	
		VDL Inv			62	51	47	46	40	32	25	25	19	10.9 mos	
Manors at Vista Ridg (225) \$320-\$360 28'	DNW-Lewisvl BO 1Q19	Starts			0	0	0	0	0	0	0	0	0	0	
		Closings			0	0	0	0	0	0	0	0	0	0	
		Housing Inv			0	0	0	0	0	0	0	0	0	0.0	
		VDL Inv			0	0	0	0	0	0	0	0	0	0.0	
Meadow Lake (163) \$100-\$160 65'	DNW-Lewisvl BO 4Q01	Starts			0	0	0	0	0	0	0	0	0	0	
		Closings			0	0	0	0	0	0	0	0	0	0	
		Housing Inv			0	0	0	0	0	0	0	0	0	0.0	
		VDL Inv			0	0	0	0	0	0	0	0	0	0.0	
Meridian (Lewisville) (257) \$201-\$391 53'-80'	DNW-Lewisvl BO 1Q10	Starts			0	0	0	0	0	0	0	0	0	0	
		Closings			0	0	0	0	0	0	0	0	0	0	
		Housing Inv			0	0	0	0	0	0	0	0	0	0.0	
		VDL Inv			0	0	0	0	0	0	0	0	0	0.0	
Midway Park Addition (184) \$80-\$100 50'	DNW-Lewisvl BO 3Q05	Starts			0	0	0	0	0	0	0	0	0	0	
		Closings			0	0	0	0	0	0	0	0	0	0	
		Housing Inv			0	0	0	0	0	0	0	0	0	0.0	
		VDL Inv			0	0	0	0	0	0	0	0	0	0.0	
Milton Street Townho (191) \$140-\$210 25'	DNW-Lewisvl BO 2Q08	Starts			0	0	0	0	0	0	0	0	0	0	
		Closings			0	0	0	0	0	0	0	0	0	0	
		Housing Inv			0	0	0	0	0	0	0	0	0	0.0	
		VDL Inv			0	0	0	0	0	0	0	0	0	0.0	
Moore Farm (262) \$202-\$650 50'-70'	DNW-Carrltn BO 1Q08	Starts			0	0	0	0	0	0	0	0	0	0	
		Closings			0	0	0	0	0	0	0	0	0	0	
		Housing Inv			0	0	0	0	0	0	0	0	0	0.0	
		VDL Inv			0	0	0	0	0	0	0	0	0	0.0	
Mustang Park (292) \$340-\$632 50'-80'	DNW-Carrltn BO 2Q18	Starts			0	0	0	0	0	0	0	0	0	0	
		Closings			0	0	0	0	0	0	0	0	0	0	
		Housing Inv			0	0	0	0	0	0	0	0	0	0.0	
		VDL Inv			0	0	0	0	0	0	0	0	0	0.0	
Mustang Park Townhom (302) \$302-\$380 22'-35'	DNW-Carrltn BO 4Q18	Starts			0	0	0	0	0	0	0	0	0	0	
		Closings			0	0	0	0	0	0	0	0	0	0	
		Housing Inv			0	0	0	0	0	0	0	0	0	0.0	
		VDL Inv			0	0	0	0	0	0	0	0	0	0.0	

Dallas/Ft. Worth Residential Survey (2Q23)

Copyright Metrostudy

Page 17 of 31



*Inventory Supply = Housing Inv/(Annual Closings/12)
Vacant Developed Lot Supply = VDL Inv/(Annual Starts/12)

N/A indicates Inventory is present but cannot calculate months of supply without starts or closings (see above).

Quarterly Activity & Inventory Report

Lewisville ISD

Sorted By Subdivision

Subdivision Name (Map No)	Sub Area	Price Range	Lot Size	Status	2Q21	3Q21	4Q21	1Q22	2Q22	3Q22	4Q22	1Q23	2Q23	Ann. Rates/ *Inv. Supply	
Mustang Park/Latera (297) \$382-\$422 45'	DNW-Carrltn BO 4Q20	Starts			0	0	0	0	0	0	0	0	0	0	
		Closings			0	0	0	0	0	0	0	0	0	0	0
		Housing Inv			0	0	0	0	0	0	0	0	0	0	0.0
		VDL Inv			0	0	0	0	0	0	0	0	0	0	0.0
Normandy Estates (331) \$1500-\$2680 59'-110'	DNE-Plano BO 4Q22	Starts			2	2	2	2	1	0	0	0	0	0	
		Closings			6	1	1	0	8	2	1	0	0	3	
		Housing Inv			6	7	8	10	3	1	0	0	0	0	0.0
		VDL Inv			7	5	3	1	0	0	0	0	0	0	0.0
Normandy Estates Tow (322) \$430-\$470 40'	DNE-Plano BO 4Q16	Starts			0	0	0	0	0	0	0	0	0	0	
		Closings			0	0	0	0	0	0	0	0	0	0	
		Housing Inv			0	0	0	0	0	0	0	0	0	0	0.0
		VDL Inv			0	0	0	0	0	0	0	0	0	0	0.0
Normandy Village (179) \$439-\$469 25' <i>Megatel Homes</i>	DNW-Lewisvl Act 4Q19	Starts			6	4	7	0	0	41	0	0	0	41	
		Closings			5	0	0	0	6	0	0	12	5	17	
		Housing Inv			14	18	25	25	19	60	60	48	43	30.4 mos	
		VDL Inv			52	48	41	41	41	0	0	0	0	0	0.0
North Shore Villas (189) \$144-\$195 50'-52'	DNW-Lewisvl BO 3Q13	Starts			0	0	0	0	0	0	0	0	0	0	
		Closings			0	0	0	0	0	0	0	0	0	0	
		Housing Inv			0	0	0	0	0	0	0	0	0	0	0.0
		VDL Inv			0	0	0	0	0	0	0	0	0	0	0.0
Oak Creek Estates (L (183)) \$150-\$155 100'	DNW-Lewisvl BO 2Q01	Starts			0	0	0	0	0	0	0	0	0	0	
		Closings			0	0	0	0	0	0	0	0	0	0	
		Housing Inv			0	0	0	0	0	0	0	0	0	0	0.0
		VDL Inv			0	0	0	0	0	0	0	0	0	0	0.0
Oak Park Addn (Flwr (138)) \$135-\$165 60'	DNW-FlwrMnd BO 2Q00	Starts			0	0	0	0	0	0	0	0	0	0	
		Closings			0	0	0	0	0	0	0	0	0	0	
		Housing Inv			0	0	0	0	0	0	0	0	0	0	0.0
		VDL Inv			0	0	0	0	0	0	0	0	0	0	0.0
Oakbend Estates (Lew (220)) \$450-\$550 30' <i>J Rose Architects & Builders</i>	DNW-Lewisvl Act 1Q21	Starts			5	0	4	0	6	0	1	0	0	1	
		Closings			0	3	2	0	9	0	1	0	0	1	
		Housing Inv			10	7	9	9	6	6	6	6	6	6	72.0 mos
		VDL Inv			17	17	13	13	7	7	6	6	6	6	72.0 mos
Oakbridge at Flower (106) \$916-\$959 90'	DNW-FlwrMnd BO 3Q22	Starts			7	7	0	1	0	0	0	0	0	0	
		Closings			10	5	7	5	5	1	0	0	0	1	
		Housing Inv			15	17	10	6	1	0	0	0	0	0	0.0
		VDL Inv			8	1	1	0	0	0	0	0	0	0	0.0
Oakbridge Crossing (101) \$0-\$0 80'	DNW-FlwrMnd Future	Starts			0	0	0	0	0	0	0	0	0	0	
		Closings			0	0	0	0	0	0	0	0	0	0	
		Housing Inv			0	0	0	0	0	0	0	0	0	0	0.0
		VDL Inv			0	0	0	0	0	0	0	0	0	0	0.0
Oaks of Bellaire (161) \$117-\$178 70'-75'	DNW-Lewisvl BO 1Q01	Starts			0	0	0	0	0	0	0	0	0	0	
		Closings			0	0	0	0	0	0	0	0	0	0	
		Housing Inv			0	0	0	0	0	0	0	0	0	0	0.0
		VDL Inv			0	0	0	0	0	0	0	0	0	0	0.0

Quarterly Activity & Inventory Report

Lewisville ISD

Sorted By Subdivision

Subdivision Name (Map No)	Sub Area	Status	2Q21	3Q21	4Q21	1Q22	2Q22	3Q22	4Q22	1Q23	2Q23	Ann. Rates/ *Inv. Supply	
Oaks of Highland Vil (125) \$200-\$250 80'	DNW-HighVil BO 2Q00	Starts	0	0	0	0	0	0	0	0	0	0	
		Closings	0	0	0	0	0	0	0	0	0	0	
		Housing Inv	0	0	0	0	0	0	0	0	0	0	0.0
		VDL Inv	0	0	0	0	0	0	0	0	0	0	0.0
Oaks of the Southwes (192) \$160-\$175 25'	DNW-Lewisvl BO 4Q04	Starts	0	0	0	0	0	0	0	0	0	0	
		Closings	0	0	0	0	0	0	0	0	0	0	
		Housing Inv	0	0	0	0	0	0	0	0	0	0	0.0
		VDL Inv	0	0	0	0	0	0	0	0	0	0	0.0
One Place (128) \$93-\$110 40'	DNW-FlwrMnd BO 2Q00	Starts	0	0	0	0	0	0	0	0	0	0	
		Closings	0	0	0	0	0	0	0	0	0	0	
		Housing Inv	0	0	0	0	0	0	0	0	0	0	0.0
		VDL Inv	0	0	0	0	0	0	0	0	0	0	0.0
Orchard Flower (166) \$433-\$587 50'-60'	DNW-FlwrMnd BO 3Q21	Starts	1	0	0	0	0	0	0	0	0	0	
		Closings	15	4	0	0	0	0	0	0	0	0	
		Housing Inv	4	0	0	0	0	0	0	0	0	0	0.0
		VDL Inv	0	0	0	0	0	0	0	0	0	0	0.0
Orchard Valley Estat (170) \$158-\$160 50'-55'	DNW-Lewisvl BO 4Q00	Starts	0	0	0	0	0	0	0	0	0	0	
		Closings	0	0	0	0	0	0	0	0	0	0	
		Housing Inv	0	0	0	0	0	0	0	0	0	0	0.0
		VDL Inv	0	0	0	0	0	0	0	0	0	0	0.0
Park Central Terrace (206) \$352-\$367 35'	DNW-Lewisvl BO 1Q23	Starts	12	12	0	0	1	0	0	0	0	0	
		Closings	0	4	5	1	7	6	6	2	0	0	
		Housing Inv	18	26	21	20	14	8	2	0	0	0	0.0
		VDL Inv	13	1	1	1	0	0	0	0	0	0	0.0
Parker Crossing (278) \$0-\$0 41'	DNW-Carrltn Future	Starts	0	0	0	0	0	0	0	0	0	0	
		Closings	0	0	0	0	0	0	0	0	0	0	
		Housing Inv	0	0	0	0	0	0	0	0	0	0	0.0
		VDL Inv	0	0	0	0	0	0	0	0	0	0	0.0
Parker Estates (Plan (306) \$140-\$205 25'-35'	DNE-Plano BO 3Q06	Starts	0	0	0	0	0	0	0	0	0	0	
		Closings	0	0	0	0	0	0	0	0	0	0	
		Housing Inv	0	0	0	0	0	0	0	0	0	0	0.0
		VDL Inv	0	0	0	0	0	0	0	0	0	0	0.0
Parker Place (Lewisv (252) \$665-\$746 40' David Weekley Homes	DNW-Lewisvl Act 4Q21	Starts	0	0	0	2	8	7	11	16	40	74	
		Closings	0	0	0	0	0	0	1	16	12	29	
		Housing Inv	0	0	0	2	10	17	27	27	55	22.8 mos	
		VDL Inv	0	0	130	128	120	113	102	86	46	7.5 mos	
Parks at Austin Ranc (320) \$250-\$255 25'	DNW-Colony BO 1Q07	Starts	0	0	0	0	0	0	0	0	0	0	
		Closings	0	0	0	0	0	0	0	0	0	0	
		Housing Inv	0	0	0	0	0	0	0	0	0	0	0.0
		VDL Inv	0	0	0	0	0	0	0	0	0	0	0.0
Parks at Uecker Addi (219) \$0-\$0 40'	DNW-Lewisvl Future	Starts	0	0	0	0	0	0	0	0	0	0	
		Closings	0	0	0	0	0	0	0	0	0	0	
		Housing Inv	0	0	0	0	0	0	0	0	0	0	0.0
		VDL Inv	0	0	0	0	0	0	0	0	0	0	0.0

Dallas/Ft. Worth Residential Survey (2Q23)

Copyright Metrostudy

Page 19 of 31



*Inventory Supply = Housing Inv/(Annual Closings/12)
Vacant Developed Lot Supply = VDL Inv/(Annual Starts/12)

N/A indicates Inventory is present but cannot calculate months of supply without starts or closings (see above).

Quarterly Activity & Inventory Report

Lewisville ISD

Sorted By Subdivision

Subdivision Name (Map No)	Sub Area	Price Range	Lot Size	Status	2Q21	3Q21	4Q21	1Q22	2Q22	3Q22	4Q22	1Q23	2Q23	Ann. Rates/ *Inv. Supply	
Parkside at Woodlake (87) \$455-\$515 50'	DNW-FlwrMnd BO 2Q18	Starts			0	0	0	0	0	0	0	0	0	0	
		Closings			0	0	0	0	0	0	0	0	0	0	0
		Housing Inv			0	0	0	0	0	0	0	0	0	0	0.0
		VDL Inv			0	0	0	0	0	0	0	0	0	0	0.0
Pebble Ridge Estates (148) \$171-\$183 60'	DNW-Lewisvl BO 3Q02	Starts			0	0	0	0	0	0	0	0	0	0	
		Closings			0	0	0	0	0	0	0	0	0	0	0
		Housing Inv			0	0	0	0	0	0	0	0	0	0	0.0
		VDL Inv			0	0	0	0	0	0	0	0	0	0	0.0
Pecan Meadows Additi (67) \$272-\$315 106'	DNW-FlwrMnd BO 4Q01	Starts			0	0	0	0	0	0	0	0	0	0	
		Closings			0	0	0	0	0	0	0	0	0	0	0
		Housing Inv			0	0	0	0	0	0	0	0	0	0	0.0
		VDL Inv			0	0	0	0	0	0	0	0	0	0	0.0
Peninsula @ Twin Cov (28) \$250-\$570 120'-200'	DNW-FlwrMnd BO 1Q01	Starts			0	0	0	0	0	0	0	0	0	0	
		Closings			0	0	0	0	0	0	0	0	0	0	0
		Housing Inv			0	0	0	0	0	0	0	0	0	0	0.0
		VDL Inv			0	0	0	0	0	0	0	0	0	0	0.0
Point Noble (19) \$899-\$1600 156'	DNW-FlwrMnd BO 2Q10	Starts			0	0	0	0	0	0	0	0	0	0	
		Closings			0	0	0	0	0	0	0	0	0	0	0
		Housing Inv			0	0	0	0	0	0	0	0	0	0	0.0
		VDL Inv			0	0	0	0	0	0	0	0	0	0	0.0
Preserve at Flower M (80) \$574-\$765 81'	DNW-FlwrMnd BO 2Q18	Starts			0	0	0	0	0	0	0	0	0	0	
		Closings			0	0	0	0	0	0	0	0	0	0	0
		Housing Inv			0	0	0	0	0	0	0	0	0	0	0.0
		VDL Inv			0	0	0	0	0	0	0	0	0	0	0.0
Preserve at Vista Ri (207) \$269-\$270 28'	DNW-Lewisvl BO 3Q15	Starts			0	0	0	0	0	0	0	0	0	0	
		Closings			0	0	0	0	0	0	0	0	0	0	0
		Housing Inv			0	0	0	0	0	0	0	0	0	0	0.0
		VDL Inv			0	0	0	0	0	0	0	0	0	0	0.0
Prince Estates (15) \$450-\$1000 147'	DNW-FlwrMnd BO 4Q01	Starts			0	0	0	0	0	0	0	0	0	0	
		Closings			0	0	0	0	0	0	0	0	0	0	0
		Housing Inv			0	0	0	0	0	0	0	0	0	0	0.0
		VDL Inv			0	0	0	0	0	0	0	0	0	0	0.0
Quail Creek North (270) \$196-\$310 25'-35'	DNW-Carrltn BO 4Q13	Starts			0	0	0	0	0	0	0	0	0	0	
		Closings			0	0	0	0	0	0	0	0	0	0	0
		Housing Inv			0	0	0	0	0	0	0	0	0	0	0.0
		VDL Inv			0	0	0	0	0	0	0	0	0	0	0.0
Quail Creek North To (269) \$176-\$182 25'	DNW-Carrltn BO 2Q11	Starts			0	0	0	0	0	0	0	0	0	0	
		Closings			0	0	0	0	0	0	0	0	0	0	0
		Housing Inv			0	0	0	0	0	0	0	0	0	0	0.0
		VDL Inv			0	0	0	0	0	0	0	0	0	0	0.0
Quail Creek Townhome (271) \$184-\$226 25'-35'	DNW-Carrltn BO 3Q06	Starts			0	0	0	0	0	0	0	0	0	0	
		Closings			0	0	0	0	0	0	0	0	0	0	0
		Housing Inv			0	0	0	0	0	0	0	0	0	0	0.0
		VDL Inv			0	0	0	0	0	0	0	0	0	0	0.0

Dallas/Ft. Worth Residential Survey (2Q23)

Copyright Metrostudy

Page 20 of 31



*Inventory Supply = Housing Inv/(Annual Closings/12)
Vacant Developed Lot Supply = VDL Inv/(Annual Starts/12)

N/A indicates Inventory is present but cannot calculate months of supply without starts or closings (see above).

Quarterly Activity & Inventory Report

Lewisville ISD

Sorted By Subdivision

Subdivision Name (Map No)	Sub Area	Price Range	Lot Size	Status	2Q21	3Q21	4Q21	1Q22	2Q22	3Q22	4Q22	1Q23	2Q23	Ann. Rates/ *Inv. Supply	
Red Hawk Addition (46) \$0-\$0 40'	DNW-FlwrMnd Future	Starts			0	0	0	0	0	0	0	0	0	0	
		Closings			0	0	0	0	0	0	0	0	0	0	0
		Housing Inv			0	0	0	0	0	0	0	0	0	0	0.0
		VDL Inv			0	0	0	0	0	0	0	0	0	0	0.0
Regency Park Additio (43) \$469-\$875 110'-118'	DNW-FlwrMnd BO 2Q18	Starts			0	0	0	0	0	0	0	0	0	0	
		Closings			0	0	0	0	0	0	0	0	0	0	0
		Housing Inv			0	0	0	0	0	0	0	0	0	0	0.0
		VDL Inv			0	0	0	0	0	0	0	0	0	0	0.0
Reserve at Chapel Hi (65) \$717-\$812 65'-80' <i>David Weekley Homes</i>	DNW-HighVil Act 2Q21	Starts			1	17	14	16	11	2	3	5	2	12	
		Closings			0	0	1	6	6	12	16	12	8	48	
		Housing Inv			1	18	31	41	46	36	23	16	10		2.5 mos
		VDL Inv			71	54	40	24	13	11	8	3	1		1.0 mos
Reserve at Creekside (129) \$430-\$449 100'	DNW-FlwrMnd BO 4Q02	Starts			0	0	0	0	0	0	0	0	0	0	
		Closings			0	0	0	0	0	0	0	0	0	0	0
		Housing Inv			0	0	0	0	0	0	0	0	0	0	0.0
		VDL Inv			0	0	0	0	0	0	0	0	0	0	0.0
Reserve at Timber Cr (174) \$220-\$227 75'	DNW-Lewisvl BO 3Q03	Starts			0	0	0	0	0	0	0	0	0	0	
		Closings			0	0	0	0	0	0	0	0	0	0	0
		Housing Inv			0	0	0	0	0	0	0	0	0	0	0.0
		VDL Inv			0	0	0	0	0	0	0	0	0	0	0.0
Reserve on Parker (C (289) \$407-\$414 45'	DNW-Carrlltn BO 2Q20	Starts			0	0	0	0	0	0	0	0	0	0	
		Closings			0	0	0	0	0	0	0	0	0	0	0
		Housing Inv			0	0	0	0	0	0	0	0	0	0	0.0
		VDL Inv			0	0	0	0	0	0	0	0	0	0	0.0
Reserve on Parker To (286) \$331-\$360 25'	DNW-Carrlltn BO 2Q20	Starts			0	0	0	0	0	0	0	0	0	0	
		Closings			0	0	0	0	0	0	0	0	0	0	0
		Housing Inv			0	0	0	0	0	0	0	0	0	0	0.0
		VDL Inv			0	0	0	0	0	0	0	0	0	0	0.0
Ridge at Indian Cree (242) \$420-\$504 50'	DNW-Carrlltn BO 4Q20	Starts			0	0	0	0	0	0	0	0	0	0	
		Closings			0	0	0	0	0	0	0	0	0	0	0
		Housing Inv			0	0	0	0	0	0	0	0	0	0	0.0
		VDL Inv			0	0	0	0	0	0	0	0	0	0	0.0
Ridgepointe (267) \$110-\$281 50'-70'	DNW-Colony BO 4Q03	Starts			0	0	0	0	0	0	0	0	0	0	
		Closings			0	0	0	0	0	0	0	0	0	0	0
		Housing Inv			0	0	0	0	0	0	0	0	0	0	0.0
		VDL Inv			0	0	0	0	0	0	0	0	0	0	0.0
Ridgeview Estates (L (157) \$175-\$241 61'	DNW-Lewisvl BO 4Q05	Starts			0	0	0	0	0	0	0	0	0	0	
		Closings			0	0	0	0	0	0	0	0	0	0	0
		Housing Inv			0	0	0	0	0	0	0	0	0	0	0.0
		VDL Inv			0	0	0	0	0	0	0	0	0	0	0.0
River Oaks Estates (13) \$690-\$730 150'	DNW-FlwrMnd BO 4Q06	Starts			0	0	0	0	0	0	0	0	0	0	
		Closings			0	0	0	0	0	0	0	0	0	0	0
		Housing Inv			0	0	0	0	0	0	0	0	0	0	0.0
		VDL Inv			0	0	0	0	0	0	0	0	0	0	0.0

Dallas/Ft. Worth Residential Survey (2Q23)

Copyright Metrostudy

Page 21 of 31



*Inventory Supply = Housing Inv/(Annual Closings/12)
Vacant Developed Lot Supply = VDL Inv/(Annual Starts/12)

N/A indicates Inventory is present but cannot calculate months of supply without starts or closings (see above).

Quarterly Activity & Inventory Report

Lewisville ISD

Sorted By Subdivision

Subdivision Name (Map No)	Sub Area	Status	2Q21	3Q21	4Q21	1Q22	2Q22	3Q22	4Q22	1Q23	2Q23	Ann. Rates/ *Inv. Supply
River Walk/Central P (109)	DNW-FlwrMnd	Starts	0	6	1	7	0	1	0	0	0	1
\$644-\$669	40'	BO 1Q23	Closings	6	3	3	1	2	2	8	11	21
			Housing Inv	15	18	16	22	20	19	11	0	0.0
			VDL Inv	15	9	8	1	1	0	0	0	0.0
River Walk/Lakeshore (103)	DNW-FlwrMnd	Starts	0	9	0	0	0	0	0	4	36	40
\$531-\$563	22'-40'	Act 1Q18	Closings	0	0	0	0	6	1	0	8	9
Mattamy Homes			Housing Inv	6	15	15	15	9	8	8	4	53.3 mos
			VDL Inv	57	48	48	64	48	48	44	8	2.4 mos
River Walk/Parkmont (100)	DNW-FlwrMnd	Starts	0	0	0	0	0	0	0	0	0	0
\$403-\$471	30'	BO 4Q20	Closings	0	0	0	0	0	0	0	0	0
			Housing Inv	0	0	0	0	0	0	0	0	0.0
			VDL Inv	0	0	0	0	0	0	0	0	0.0
River Walk/Pinnacle (110)	DNW-FlwrMnd	Starts	0	0	0	0	0	0	0	0	0	0
\$329-\$339	25'	BO 2Q21	Closings	3	0	0	0	0	0	0	0	0
			Housing Inv	0	0	0	0	0	0	0	0	0.0
			VDL Inv	0	0	0	0	0	0	0	0	0.0
River Walk/Riverside (108)	DNW-FlwrMnd	Starts	0	0	0	0	0	0	0	0	0	0
\$383-\$386	25'	BO 4Q20	Closings	0	0	0	0	0	0	0	0	0
			Housing Inv	0	0	0	0	0	0	0	0	0.0
			VDL Inv	0	0	0	0	0	0	0	0	0.0
Rock Creek Townhomes (293)	DNE-Frisco	Starts	0	0	0	0	0	0	0	0	0	0
\$0-\$0	25'	Future	Closings	0	0	0	0	0	0	0	0	0
			Housing Inv	0	0	0	0	0	0	0	0	0.0
			VDL Inv	0	0	0	0	0	0	0	0	0.0
Rockbrook Place Addi (222)	DNW-Lewisvl	Starts	0	0	0	0	0	0	0	0	0	0
\$180-\$186	26'	BO 2Q13	Closings	0	0	0	0	0	0	0	0	0
			Housing Inv	0	0	0	0	0	0	0	0	0.0
			VDL Inv	0	0	0	0	0	0	0	0	0.0
Rockhaven Estates (37)	DNW-FlwrMnd	Starts	0	0	0	0	0	0	0	0	0	0
\$700-\$1200	150'	BO 4Q21	Closings	0	0	1	0	0	0	0	0	0
			Housing Inv	1	1	0	0	0	0	0	0	0.0
			VDL Inv	0	0	0	0	0	0	0	0	0.0
Rolling Hills Estate (69)	DNW-HighVil	Starts	0	0	0	0	0	0	0	0	0	0
\$221-\$370	65'	BO 2Q06	Closings	0	0	0	0	0	0	0	0	0
			Housing Inv	0	0	0	0	0	0	0	0	0.0
			VDL Inv	0	0	0	0	0	0	0	0	0.0
Rosalie Estates (123)	DNW-HighVil	Starts	0	0	0	0	0	0	0	0	0	0
\$150-\$279	130'	BO 4Q00	Closings	0	0	0	0	0	0	0	0	0
			Housing Inv	0	0	0	0	0	0	0	0	0.0
			VDL Inv	0	0	0	0	0	0	0	0	0.0
Saddle Oaks Addition (29)	DNW-FlwrMnd	Starts	0	0	0	0	0	0	0	0	0	0
\$570-\$600	150'	BO 2Q07	Closings	0	0	0	0	0	0	0	0	0
			Housing Inv	0	0	0	0	0	0	0	0	0.0
			VDL Inv	0	0	0	0	0	0	0	0	0.0

Dallas/Ft. Worth Residential Survey (2Q23)

Copyright Metrostudy

Page 22 of 31



*Inventory Supply = Housing Inv/(Annual Closings/12)
Vacant Developed Lot Supply = VDL Inv/(Annual Starts/12)

N/A indicates Inventory is present but cannot calculate months of supply without starts or closings (see above).

Quarterly Activity & Inventory Report

Lewisville ISD

Sorted By Subdivision

Subdivision Name (Map No)	Sub Area	Price Range	Lot Size	Status	2Q21	3Q21	4Q21	1Q22	2Q22	3Q22	4Q22	1Q23	2Q23	Ann. Rates/ *Inv. Supply	
Saddle Ridge (Carrol (281)) \$400-\$443 45'	DNW-Carrltn BO 2Q21	Starts			0	0	0	0	0	0	0	0	0	0	
		Closings			3	0	0	0	0	0	0	0	0	0	0
		Housing Inv			0	0	0	0	0	0	0	0	0	0	0.0
		VDL Inv			0	0	0	0	0	0	0	0	0	0	0.0
Saddlewood (Flower M (27)) \$989-\$1046 120' <i>Bud Bartley Homes/Victor Myers Custom Homes</i>	DNW-FlwrMnd Act 4Q15	Starts			0	2	1	1	0	0	0	0	0	0	
		Closings			0	0	3	0	0	1	1	0	0	2	
		Housing Inv			2	4	2	3	3	2	2	1	1	1	6.0 mos
		VDL Inv			6	4	3	2	2	2	2	2	2	2	n/a
Samuel Place (151) \$175-\$220 65'	DNW-Lewisvl BO 2Q07	Starts			0	0	0	0	0	0	0	0	0	0	
		Closings			0	0	0	0	0	0	0	0	0	0	0
		Housing Inv			0	0	0	0	0	0	0	0	0	0	0.0
		VDL Inv			0	0	0	0	0	0	0	0	0	0	0.0
Sanctuary at Flower (63) \$449-\$598 100'	DNW-FlwrMnd BO 3Q08	Starts			0	0	0	0	0	0	0	0	0	0	
		Closings			0	0	0	0	0	0	0	0	0	0	0
		Housing Inv			0	0	0	0	0	0	0	0	0	0	0.0
		VDL Inv			0	0	0	0	0	0	0	0	0	0	0.0
Serenity (Flower Mou (3)) \$0-\$0 80'	DNW-FlwrMnd Future	Starts			0	0	0	0	0	0	0	0	0	0	
		Closings			0	0	0	0	0	0	0	0	0	0	0
		Housing Inv			0	0	0	0	0	0	0	0	0	0	0.0
		VDL Inv			0	0	0	0	0	0	0	0	0	0	0.0
Settler's Village To (223) \$209-\$217 20'	DNW-Lewisvl BO 1Q15	Starts			0	0	0	0	0	0	0	0	0	0	
		Closings			0	0	0	0	0	0	0	0	0	0	0
		Housing Inv			0	0	0	0	0	0	0	0	0	0	0.0
		VDL Inv			0	0	0	0	0	0	0	0	0	0	0.0
Shiloh Ranch Estates (6) \$173-\$178 280'	DNW-FlwrMnd BO 2Q03	Starts			0	0	0	0	0	0	0	0	0	0	
		Closings			0	0	0	0	0	0	0	0	0	0	0
		Housing Inv			0	0	0	0	0	0	0	0	0	0	0.0
		VDL Inv			0	0	0	0	0	0	0	0	0	0	0.0
Shoal Creek (329) \$268-\$2000 50'-100'	DNE-Plano BO 2Q10	Starts			0	0	0	0	0	0	0	0	0	0	
		Closings			0	0	0	0	0	0	0	0	0	0	0
		Housing Inv			0	0	0	0	0	0	0	0	0	0	0.0
		VDL Inv			0	0	0	0	0	0	0	0	0	0	0.0
Shops at Prestonwood (309) \$269-\$560 22'-28'	DNW-Carrltn BO 2Q19	Starts			0	0	0	0	0	0	0	0	0	0	
		Closings			0	0	0	0	0	0	0	0	0	0	0
		Housing Inv			0	0	0	0	0	0	0	0	0	0	0.0
		VDL Inv			0	0	0	0	0	0	0	0	0	0	0.0
Simple Oaks Estates (22) \$200-\$500 176'	DNW-DOak BO 2Q17	Starts			0	0	0	0	0	0	0	0	0	0	
		Closings			0	0	0	0	0	0	0	0	0	0	0
		Housing Inv			0	0	0	0	0	0	0	0	0	0	0.0
		VDL Inv			0	0	0	0	0	0	0	0	0	0	0.0
Sojourn at the Realm (260) \$299-\$407	DNW-Lewisvl BO 1Q22	Starts			0	0	0	0	0	0	0	0	0	0	
		Closings			16	22	21	2	0	0	0	0	0	0	0
		Housing Inv			45	23	2	0	0	0	0	0	0	0	0.0
		VDL Inv			0	0	0	0	0	0	0	0	0	0	0.0

Quarterly Activity & Inventory Report

Lewisville ISD

Sorted By Subdivision

Subdivision Name (Map No)	Sub Area	Status	2Q21	3Q21	4Q21	1Q22	2Q22	3Q22	4Q22	1Q23	2Q23	Ann. Rates/ *Inv. Supply
South Village Additi (200) \$340-\$380 44'	DNW-Lewisvl BO 2Q23	Starts	2	0	1	0	5	0	0	1	0	1
		Closings	1	9	19	0	2	0	0	0	5	5
		Housing Inv	28	19	1	1	4	4	4	5	0	0.0
		VDL Inv	7	7	6	6	1	1	1	0	0	0.0
Southridge Addition (187) \$146-\$189 60'-61'	DNW-Lewisvl BO 2Q00	Starts	0	0	0	0	0	0	0	0	0	0
		Closings	0	0	0	0	0	0	0	0	0	0
		Housing Inv	0	0	0	0	0	0	0	0	0	0.0
		VDL Inv	0	0	0	0	0	0	0	0	0	0.0
Sparkman Estates (215) \$235-\$240 30'	DNW-Lewisvl BO 2Q08	Starts	0	0	0	0	0	0	0	0	0	0
		Closings	0	0	0	0	0	0	0	0	0	0
		Housing Inv	0	0	0	0	0	0	0	0	0	0.0
		VDL Inv	0	0	0	0	0	0	0	0	0	0.0
Spectra Heights Addi (224) \$0-\$0 24'	DNW-Lewisvl Future	Starts	0	0	0	0	0	0	0	0	0	0
		Closings	0	0	0	0	0	0	0	0	0	0
		Housing Inv	0	0	0	0	0	0	0	0	0	0.0
		VDL Inv	0	0	0	0	0	0	0	0	0	0.0
St. James Place (71) \$255-\$330 65'	DNW-HighVil BO 4Q22	Starts	0	0	2	0	0	0	0	0	0	0
		Closings	0	0	0	1	1	0	1	0	0	1
		Housing Inv	1	1	3	2	1	1	0	0	0	0.0
		VDL Inv	2	2	0	0	0	0	0	0	0	0.0
Stafford Estates (56) \$226-\$311 75'-85'	DNW-FlwrMnd BO 2Q00	Starts	0	0	0	0	0	0	0	0	0	0
		Closings	0	0	0	0	0	0	0	0	0	0
		Housing Inv	0	0	0	0	0	0	0	0	0	0.0
		VDL Inv	0	0	0	0	0	0	0	0	0	0.0
Stewart Peninsula/Co (250) \$142-\$280 55'	DNW-Colony BO 1Q04	Starts	0	0	0	0	0	0	0	0	0	0
		Closings	0	0	0	0	0	0	0	0	0	0
		Housing Inv	0	0	0	0	0	0	0	0	0	0.0
		VDL Inv	0	0	0	0	0	0	0	0	0	0.0
Stewart Peninsula/Cy (248) \$285-\$423 50'-60'	DNW-Colony BO 4Q09	Starts	0	0	0	0	0	0	0	0	0	0
		Closings	0	0	0	0	0	0	0	0	0	0
		Housing Inv	0	0	0	0	0	0	0	0	0	0.0
		VDL Inv	0	0	0	0	0	0	0	0	0	0.0
Stewart Peninsula/He (251) \$163-\$209 55'-65'	DNW-Colony BO 3Q03	Starts	0	0	0	0	0	0	0	0	0	0
		Closings	0	0	0	0	0	0	0	0	0	0
		Housing Inv	0	0	0	0	0	0	0	0	0	0.0
		VDL Inv	0	0	0	0	0	0	0	0	0	0.0
Stewart Peninsula/No (249) \$400-\$769 55'-85'	DNW-Colony BO 2Q10	Starts	0	0	0	0	0	0	0	0	0	0
		Closings	0	0	0	0	0	0	0	0	0	0
		Housing Inv	0	0	0	0	0	0	0	0	0	0.0
		VDL Inv	0	0	0	0	0	0	0	0	0	0.0
Stewart Peninsula/Th (253) \$143-\$189 55'-62'	DNW-Colony BO 4Q02	Starts	0	0	0	0	0	0	0	0	0	0
		Closings	0	0	0	0	0	0	0	0	0	0
		Housing Inv	0	0	0	0	0	0	0	0	0	0.0
		VDL Inv	0	0	0	0	0	0	0	0	0	0.0

Quarterly Activity & Inventory Report

Lewisville ISD

Sorted By Subdivision

Subdivision Name (Map No)	Sub Area	Price Range	Lot Size	Status	2Q21	3Q21	4Q21	1Q22	2Q22	3Q22	4Q22	1Q23	2Q23	Ann. Rates/ *Inv. Supply
Stone Hill Farm (122)	DNW-FlwrMnd	\$181-\$247	70'-84'	BO 3Q02	0	0	0	0	0	0	0	0	0	0
				Starts	0	0	0	0	0	0	0	0	0	0
				Closings	0	0	0	0	0	0	0	0	0	0
				Housing Inv	0	0	0	0	0	0	0	0	0	0.0
				VDL Inv	0	0	0	0	0	0	0	0	0	0.0
Stonebriar (334)	DNE-Frisco	\$250-\$2700	50'-110'	BO 1Q11	0	0	0	0	0	0	0	0	0	0
				Starts	0	0	0	0	0	0	0	0	0	0
				Closings	0	0	0	0	0	0	0	0	0	0
				Housing Inv	0	0	0	0	0	0	0	0	0	0.0
				VDL Inv	0	0	0	0	0	0	0	0	0	0.0
Stonebriar Country C (318)	DNE-Frisco	\$849-\$1900	90'	Act 2Q01	0	0	0	0	0	0	0	0	0	0
				Starts	0	0	0	0	0	0	0	0	0	0
				Closings	0	0	0	0	0	0	0	0	0	0
				Housing Inv	0	0	0	0	0	0	0	0	0	0.0
				VDL Inv	4	4	4	4	4	4	4	4	4	n/a
Suncrest @ Flower Mo (135)	DNW-FlwrMnd	\$240-\$398	55'-80'	BO 4Q13	0	0	0	0	0	0	0	0	0	0
				Starts	0	0	0	0	0	0	0	0	0	0
				Closings	0	0	0	0	0	0	0	0	0	0
				Housing Inv	0	0	0	0	0	0	0	0	0	0.0
				VDL Inv	0	0	0	0	0	0	0	0	0	0.0
Sunset Point at Twin (35)	DNW-FlwrMnd	\$1100-\$1300	80'	Act 4Q21	0	0	0	2	0	6	3	0	1	10
				Starts	0	0	0	2	0	6	3	0	1	10
				Closings	0	0	0	0	0	0	0	3	5	8
				Housing Inv	0	0	0	2	2	8	11	8	4	6.0 mos
				VDL Inv	0	0	18	16	16	10	7	7	6	7.2 mos
Surrey Lane Addition (95)	DNW-FlwrMnd	\$700-\$800	90'	BO 4Q16	0	0	0	0	0	0	0	0	0	0
				Starts	0	0	0	0	0	0	0	0	0	0
				Closings	0	0	0	0	0	0	0	0	0	0
				Housing Inv	0	0	0	0	0	0	0	0	0	0.0
				VDL Inv	0	0	0	0	0	0	0	0	0	0.0
Tequesta (121)	DNW-HighVil	\$499-\$556	60'	BO 3Q22	0	2	0	1	0	0	0	0	0	0
				Starts	0	2	0	1	0	0	0	0	0	0
				Closings	0	5	0	1	0	2	0	0	0	2
				Housing Inv	5	2	2	2	2	0	0	0	0	0.0
				VDL Inv	3	1	1	0	0	0	0	0	0	0.0
Terracina (Flower Mo (55)	DNW-FlwrMnd	\$695-\$771	100'	Act 3Q12	0	0	0	0	0	0	0	0	0	0
				Starts	0	0	0	0	0	0	0	0	0	0
				Closings	11	2	1	0	1	0	0	0	0	0
				Housing Inv	4	2	1	1	0	0	0	0	0	0.0
				VDL Inv	1	1	1	1	1	1	1	1	1	n/a
The Corvalla at Ston (333)	DNE-Frisco	\$525-\$2000		Act 1Q18	0	0	0	0	0	0	0	0	0	0
				Starts	0	0	0	0	0	0	0	0	0	0
				Closings	0	0	0	1	0	1	0	1	3	5
				Housing Inv	24	24	24	23	23	22	22	21	18	43.2 mos
				VDL Inv	0	0	0	0	0	0	0	0	0	0.0
The Hills of Kingswo (282)	DNE-Frisco	\$1460-\$4500	65'-150'	Act 1Q09	2	27	12	5	13	7	6	10	1	24
				Starts	2	27	12	5	13	7	6	10	1	24
				Closings	19	0	9	13	12	10	4	11	8	33
				Housing Inv	21	48	51	43	44	41	43	42	35	12.7 mos
				VDL Inv	107	80	76	70	55	55	49	39	71	35.5 mos

Quarterly Activity & Inventory Report

Lewisville ISD

Sorted By Subdivision

Subdivision Name (Map No)	Sub Area	Price Range	Lot Size	Status	2Q21	3Q21	4Q21	1Q22	2Q22	3Q22	4Q22	1Q23	2Q23	Ann. Rates/ *Inv. Supply	
Three Bridges Estate (68) \$800-\$1000 258'	DNW-FlwrMnd Act 2Q05	Starts			0	0	0	0	0	0	0	0	0	0	
		Closings			0	0	0	0	0	0	0	0	0	0	0
		Housing Inv			0	0	0	0	0	0	0	0	0	0	0.0
		VDL Inv			2	2	2	2	2	2	2	2	2	2	n/a
Timber Creek Park Es (185) \$112-\$160 61'	DNW-Lewisvl BO 4Q01	Starts			0	0	0	0	0	0	0	0	0	0	
		Closings			0	0	0	0	0	0	0	0	0	0	0
		Housing Inv			0	0	0	0	0	0	0	0	0	0	0.0
		VDL Inv			0	0	0	0	0	0	0	0	0	0	0.0
Timber Creek Willows (205) \$0-\$0 25'	DNW-Lewisvl Future	Starts			0	0	0	0	0	0	0	0	0	0	
		Closings			0	0	0	0	0	0	0	0	0	0	0
		Housing Inv			0	0	0	0	0	0	0	0	0	0	0.0
		VDL Inv			0	0	0	0	0	0	0	0	0	0	0.0
Timber Hill Addition (195) \$135-\$185 53'	DNW-Lewisvl BO 3Q00	Starts			0	0	0	0	0	0	0	0	0	0	
		Closings			0	0	0	0	0	0	0	0	0	0	0
		Housing Inv			0	0	0	0	0	0	0	0	0	0	0.0
		VDL Inv			0	0	0	0	0	0	0	0	0	0	0.0
Timber Valley Estate (188) \$90-\$128 40'-67'	DNW-Lewisvl BO 2Q00	Starts			0	0	0	0	0	0	0	0	0	0	
		Closings			0	0	0	0	0	0	0	0	0	0	0
		Housing Inv			0	0	0	0	0	0	0	0	0	0	0.0
		VDL Inv			0	0	0	0	0	0	0	0	0	0	0.0
Tinley Park (162) \$635-\$635 50'-100'	DNW-FlwrMnd BO 3Q22	Starts			10	3	3	1	0	0	0	0	0	0	
		Closings			2	8	15	2	6	1	0	0	0	0	1
		Housing Inv			25	20	8	7	1	0	0	0	0	0	0.0
		VDL Inv			7	4	1	0	0	0	0	0	0	0	0.0
Town Lake at Flower (24) \$1518-\$1627 100'-120' Toll Brothers Inc	DNW-FlwrMnd Act 1Q17	Starts			1	11	11	3	9	7	11	1	3	22	
		Closings			8	7	3	9	5	9	9	7	10	35	
		Housing Inv			19	23	31	25	29	27	29	23	16	5.5 mos	
		VDL Inv			57	46	35	32	23	16	5	4	1	0.5 mos	
Towne View Estates (93) \$260-\$322 80'-97'	DNW-FlwrMnd BO 2Q02	Starts			0	0	0	0	0	0	0	0	0	0	
		Closings			0	0	0	0	0	0	0	0	0	0	0
		Housing Inv			0	0	0	0	0	0	0	0	0	0	0.0
		VDL Inv			0	0	0	0	0	0	0	0	0	0	0.0
Townhomes @ Continen (204) \$158-\$220 24'	DNW-Lewisvl BO 4Q17	Starts			0	0	0	0	0	0	0	0	0	0	
		Closings			0	0	0	0	0	0	0	0	0	0	0
		Housing Inv			0	0	0	0	0	0	0	0	0	0	0.0
		VDL Inv			0	0	0	0	0	0	0	0	0	0	0.0
Townhomes of Vista R (218) \$179-\$189 25'	DNW-Lewisvl BO 2Q10	Starts			0	0	0	0	0	0	0	0	0	0	
		Closings			0	0	0	0	0	0	0	0	0	0	0
		Housing Inv			0	0	0	0	0	0	0	0	0	0	0.0
		VDL Inv			0	0	0	0	0	0	0	0	0	0	0.0
Traditions of Flower (66) \$0-\$0 107'	DNW-FlwrMnd Future	Starts			0	0	0	0	0	0	0	0	0	0	
		Closings			0	0	0	0	0	0	0	0	0	0	0
		Housing Inv			0	0	0	0	0	0	0	0	0	0	0.0
		VDL Inv			0	0	0	0	0	0	0	0	0	0	0.0

Dallas/Ft. Worth Residential Survey (2Q23)

Copyright Metrostudy

Page 26 of 31



*Inventory Supply = Housing Inv/(Annual Closings/12)
Vacant Developed Lot Supply = VDL Inv/(Annual Starts/12)

N/A indicates Inventory is present but cannot calculate months of supply without starts or closings (see above).

Quarterly Activity & Inventory Report

Lewisville ISD

Sorted By Subdivision

Subdivision Name (Map No)	Sub Area	Price Range	Lot Size	Status	2Q21	3Q21	4Q21	1Q22	2Q22	3Q22	4Q22	1Q23	2Q23	Ann. Rates/ *Inv. Supply	
Trails at Arbor Hill (294) \$394-\$595 50'	DNW-Carrltn BO 4Q20	Starts			0	0	0	0	0	0	0	0	0	0	
		Closings			0	0	0	0	0	0	0	0	0	0	0
		Housing Inv			0	0	0	0	0	0	0	0	0	0	0.0
		VDL Inv			0	0	0	0	0	0	0	0	0	0	0.0
Trinity Townhomes (L (216) \$0-\$0 17'	DNW-Lewisvl Future	Starts			0	0	0	0	0	0	0	0	0	0	
		Closings			0	0	0	0	0	0	0	0	0	0	0
		Housing Inv			0	0	0	0	0	0	0	0	0	0	0.0
		VDL Inv			0	0	0	0	0	0	0	0	0	0	0.0
Twin Lakes Estates (30) \$400-\$500 100'	DNW-DOak BO 3Q03	Starts			0	0	0	0	0	0	0	0	0	0	
		Closings			0	0	0	0	0	0	0	0	0	0	0
		Housing Inv			0	0	0	0	0	0	0	0	0	0	0.0
		VDL Inv			0	0	0	0	0	0	0	0	0	0	0.0
Uptown Village (208) \$199-\$330 22'-25'	DNW-Lewisvl BO 3Q21	Starts			0	0	0	0	0	0	0	0	0	0	
		Closings			0	5	0	0	0	0	0	0	0	0	0
		Housing Inv			5	0	0	0	0	0	0	0	0	0	0.0
		VDL Inv			0	0	0	0	0	0	0	0	0	0	0.0
Valley View Addition (182) \$94-\$175 65'	DNW-Lewisvl BO 2Q01	Starts			0	0	0	0	0	0	0	0	0	0	
		Closings			0	0	0	0	0	0	0	0	0	0	0
		Housing Inv			0	0	0	0	0	0	0	0	0	0	0.0
		VDL Inv			0	0	0	0	0	0	0	0	0	0	0.0
Valley Vista Estates (180) \$118-\$225 66'-100'	DNW-Lewisvl BO 2Q00	Starts			0	0	0	0	0	0	0	0	0	0	
		Closings			0	0	0	0	0	0	0	0	0	0	0
		Housing Inv			0	0	0	0	0	0	0	0	0	0	0.0
		VDL Inv			0	0	0	0	0	0	0	0	0	0	0.0
Verona Addition (Lew (168) \$306-\$348 50'	DNW-Lewisvl BO 4Q17	Starts			0	0	0	0	0	0	0	0	0	0	
		Closings			0	0	0	0	0	0	0	0	0	0	0
		Housing Inv			0	0	0	0	0	0	0	0	0	0	0.0
		VDL Inv			0	0	0	0	0	0	0	0	0	0	0.0
Vickery (32) \$798-\$1380 62'-100' <i>John R Landon Distinction/Toll Brothers Inc</i>	DNW-CCanyon Act 1Q21	Starts			3	14	24	21	14	15	22	7	23	67	
		Closings			0	0	0	1	5	11	39	9	21	80	
		Housing Inv			3	17	41	61	70	74	57	55	57	8.6 mos	
		VDL Inv			123	131	134	113	99	84	112	105	82	14.7 mos	
Vilamoura (53) \$600-\$800 72'	DNW-FlwrMnd BO 4Q17	Starts			0	0	0	0	0	0	0	0	0	0	
		Closings			0	0	0	0	0	0	0	0	0	0	0
		Housing Inv			0	0	0	0	0	0	0	0	0	0	0.0
		VDL Inv			0	0	0	0	0	0	0	0	0	0	0.0
Village at Prestonwo (312) \$200-\$241 40'-50'	DNE-Plano BO 2Q11	Starts			0	0	0	0	0	0	0	0	0	0	
		Closings			0	0	0	0	0	0	0	0	0	0	0
		Housing Inv			0	0	0	0	0	0	0	0	0	0	0.0
		VDL Inv			0	0	0	0	0	0	0	0	0	0	0.0
Village at the Point (283) \$360-\$360 26'	DNW-Colony BO 3Q20	Starts			0	0	0	0	0	0	0	0	0	0	
		Closings			0	0	0	0	0	0	0	0	0	0	0
		Housing Inv			0	0	0	0	0	0	0	0	0	0	0.0
		VDL Inv			0	0	0	0	0	0	0	0	0	0	0.0

Dallas/Ft. Worth Residential Survey (2Q23)

Copyright Metrostudy

Page 27 of 31



*Inventory Supply = Housing Inv/(Annual Closings/12)
Vacant Developed Lot Supply = VDL Inv/(Annual Starts/12)

N/A indicates Inventory is present but cannot calculate months of supply without starts or closings (see above).

Quarterly Activity & Inventory Report

Lewisville ISD

Sorted By Subdivision

Subdivision Name (Map No)	Sub Area	Status	2Q21	3Q21	4Q21	1Q22	2Q22	3Q22	4Q22	1Q23	2Q23	Ann. Rates/ *Inv. Supply	
Village Townhomes (300) \$0-\$0 30'	DNW-Colony	Starts	0	0	0	0	0	0	0	0	0	0	
		Future Closings	0	0	0	0	0	0	0	0	0	0	
		Housing Inv	0	0	0	0	0	0	0	0	0	0	0.0
		VDL Inv	0	0	0	0	0	0	0	0	0	0	0.0
Villages of Indian C (239) \$130-\$165 40'-50'	DNW-Carrltn BO 1Q03	Starts	0	0	0	0	0	0	0	0	0	0	
		Closings	0	0	0	0	0	0	0	0	0	0	0
		Housing Inv	0	0	0	0	0	0	0	0	0	0	0.0
		VDL Inv	0	0	0	0	0	0	0	0	0	0	0.0
Villages of Northsho (85) \$232-\$260 68'-94'	DNW-FlwrMnd BO 3Q00	Starts	0	0	0	0	0	0	0	0	0	0	0
		Closings	0	0	0	0	0	0	0	0	0	0	0
		Housing Inv	0	0	0	0	0	0	0	0	0	0	0.0
		VDL Inv	0	0	0	0	0	0	0	0	0	0	0.0
Villas at Indian Cre (240) \$250-\$289 40'	DNW-Carrltn BO 4Q13	Starts	0	0	0	0	0	0	0	0	0	0	0
		Closings	0	0	0	0	0	0	0	0	0	0	0
		Housing Inv	0	0	0	0	0	0	0	0	0	0	0.0
		VDL Inv	0	0	0	0	0	0	0	0	0	0	0.0
Villas at Lake Vista (226) \$260-\$333 30'	DNW-Coppell BO 2Q14	Starts	0	0	0	0	0	0	0	0	0	0	0
		Closings	0	0	0	0	0	0	0	0	0	0	0
		Housing Inv	0	0	0	0	0	0	0	0	0	0	0.0
		VDL Inv	0	0	0	0	0	0	0	0	0	0	0.0
Villas at Parker (304) \$379-\$400 45'	DNW-Carrltn BO 4Q20	Starts	0	0	0	0	0	0	0	0	0	0	0
		Closings	0	0	0	0	0	0	0	0	0	0	0
		Housing Inv	0	0	0	0	0	0	0	0	0	0	0.0
		VDL Inv	0	0	0	0	0	0	0	0	0	0	0.0
Villas at Southgate (131) \$510-\$549 30'	DNW-FlwrMnd BO 1Q23	Starts	17	1	3	11	3	0	0	0	0	0	0
		Closings	3	18	4	8	5	8	5	5	5	0	18
		Housing Inv	35	18	17	20	18	10	5	0	0	0	0.0
		VDL Inv	18	17	14	3	0	0	0	0	0	0	0.0
Villas at Southgate (134) \$470-\$576 22' <i>CB Jeni Homes</i>	DNW-FlwrMnd Act 3Q18	Starts	20	7	11	13	28	11	0	3	5	19	
		Closings	11	25	2	5	8	16	6	48	2	72	
		Housing Inv	43	25	34	42	62	57	51	6	9	1.5 mos	
		VDL Inv	78	71	60	47	19	8	8	5	0	0.0	
Villas of Bellaire (190) \$0-\$0 26'	DNW-Lewisvl Future	Starts	0	0	0	0	0	0	0	0	0	0	0
		Closings	0	0	0	0	0	0	0	0	0	0	0
		Housing Inv	0	0	0	0	0	0	0	0	0	0	0.0
		VDL Inv	0	0	0	0	0	0	0	0	0	0	0.0
Villas of Indian Cre (243) \$234-\$489 60'-80'	DNW-Carrltn BO 1Q11	Starts	0	0	0	0	0	0	0	0	0	0	0
		Closings	0	0	0	0	0	0	0	0	0	0	0
		Housing Inv	0	0	0	0	0	0	0	0	0	0	0.0
		VDL Inv	0	0	0	0	0	0	0	0	0	0	0.0
Villas of Indian Cre (234) \$227-\$256 22'	DNW-Carrltn BO 1Q15	Starts	0	0	0	0	0	0	0	0	0	0	0
		Closings	0	0	0	0	0	0	0	0	0	0	0
		Housing Inv	0	0	0	0	0	0	0	0	0	0	0.0
		VDL Inv	0	0	0	0	0	0	0	0	0	0	0.0

Quarterly Activity & Inventory Report

Lewisville ISD

Sorted By Subdivision

Subdivision Name (Map No)	Sub Area	Status	2Q21	3Q21	4Q21	1Q22	2Q22	3Q22	4Q22	1Q23	2Q23	Ann. Rates/ *Inv. Supply	
Villas of Prestonwoo (315)	DNW-Carrltn	Starts	30	11	25	0	14	4	0	0	0	4	
\$451-\$530	28'	BO 2Q23	Closings	0	19	35	10	20	8	0	16	1	25
			Housing Inv	55	47	37	27	21	17	17	1	0	0.0
			VDL Inv	39	43	18	18	4	0	0	0	0	0.0
Vista del Lago Addit (227)	DNW-Lewisvl	Starts	21	3	6	16	21	0	9	0	0	9	
\$416-\$491	22'	Act 3Q19	Closings	10	6	11	0	9	17	18	15	7	57
CB Jeni Homes			Housing Inv	35	32	27	43	55	38	29	14	7	1.5 mos
			VDL Inv	55	52	46	30	9	9	0	0	0	0.0
Vista Ridge Brownsto (221)	DNW-Lewisvl	Starts	0	0	0	0	0	0	0	0	0	0	
\$215-\$260	24'	BO 2Q17	Closings	0	0	0	0	0	0	0	0	0	0
			Housing Inv	0	0	0	0	0	0	0	0	0	0.0
			VDL Inv	0	0	0	0	0	0	0	0	0	0.0
Vista Villas Additio (181)	DNW-Lewisvl	Starts	0	0	0	0	0	0	0	0	0	0	
\$326-\$393	50'	BO 3Q20	Closings	0	0	0	0	0	0	0	0	0	0
			Housing Inv	0	0	0	0	0	0	0	0	0	0.0
			VDL Inv	0	0	0	0	0	0	0	0	0	0.0
Walnut Grove Additio (73)	DNW-FlwrMnd	Starts	0	0	0	0	0	0	0	0	0	0	
\$290-\$300	46'	BO 4Q08	Closings	0	0	0	0	0	0	0	0	0	0
			Housing Inv	0	0	0	0	0	0	0	0	0	0.0
			VDL Inv	0	0	0	0	0	0	0	0	0	0.0
Warmington Meadows (308)	DNW-Carrltn	Starts	0	0	0	0	0	0	0	0	0	0	
\$386-\$709	80'	BO 2Q14	Closings	0	0	0	0	0	0	0	0	0	0
			Housing Inv	0	0	0	0	0	0	0	0	0	0.0
			VDL Inv	0	0	0	0	0	0	0	0	0	0.0
Waterford Park Estat (111)	DNW-FlwrMnd	Starts	0	0	0	0	0	0	0	0	0	0	
\$299-\$445	70'-114'	BO 3Q15	Closings	0	0	0	0	0	0	0	0	0	0
			Housing Inv	0	0	0	0	0	0	0	0	0	0.0
			VDL Inv	0	0	0	0	0	0	0	0	0	0.0
Waters Edge, The (256)	DNW-Colony	Starts	0	0	0	0	0	0	0	0	0	0	
\$475-\$900	60'	BO 4Q09	Closings	0	0	0	0	0	0	0	0	0	0
			Housing Inv	0	0	0	0	0	0	0	0	0	0.0
			VDL Inv	0	0	0	0	0	0	0	0	0	0.0
Wellington Manor (FI (45)	DNW-FlwrMnd	Starts	0	0	0	0	0	0	0	0	0	0	
\$469-\$554	80'	BO 2Q14	Closings	0	0	0	0	0	0	0	0	0	0
			Housing Inv	0	0	0	0	0	0	0	0	0	0.0
			VDL Inv	0	0	0	0	0	0	0	0	0	0.0
Wellington/Brandywin (36)	DNW-FlwrMnd	Starts	0	0	0	0	0	0	0	0	0	0	
\$395-\$439	95'	BO 4Q04	Closings	0	0	0	0	0	0	0	0	0	0
			Housing Inv	0	0	0	0	0	0	0	0	0	0.0
			VDL Inv	0	0	0	0	0	0	0	0	0	0.0
Wellington/Estates, (38)	DNW-FlwrMnd	Starts	0	0	0	0	0	0	0	0	0	0	
\$228-\$364	50'-71'	BO 3Q07	Closings	0	0	0	0	0	0	0	0	0	0
			Housing Inv	0	0	0	0	0	0	0	0	0	0.0
			VDL Inv	0	0	0	0	0	0	0	0	0	0.0

Dallas/Ft. Worth Residential Survey (2Q23)

Copyright Metrostudy

Page 29 of 31



*Inventory Supply = Housing Inv/(Annual Closings/12)
Vacant Developed Lot Supply = VDL Inv/(Annual Starts/12)

N/A indicates Inventory is present but cannot calculate months of supply without starts or closings (see above).

Quarterly Activity & Inventory Report

Lewisville ISD

Sorted By Subdivision

Subdivision Name (Map No)	Sub Area	Status	2Q21	3Q21	4Q21	1Q22	2Q22	3Q22	4Q22	1Q23	2Q23	Ann. Rates/ *Inv. Supply
Wellington/Hillcrest (42)	DNW-FlwrMnd	Starts	0	0	0	0	0	0	0	0	0	0
\$340-\$374	75'-106'	BO 1Q04	Closings	0	0	0	0	0	0	0	0	0
			Housing Inv	0	0	0	0	0	0	0	0	0.0
			VDL Inv	0	0	0	0	0	0	0	0	0.0
Wellington/Wethersto (57)	DNW-FlwrMnd	Starts	0	0	0	0	0	0	0	0	0	0
\$134-\$335	50'-70'	BO 2Q04	Closings	0	0	0	0	0	0	0	0	0
			Housing Inv	0	0	0	0	0	0	0	0	0.0
			VDL Inv	0	0	0	0	0	0	0	0	0.0
Wentworth Villas Est (150)	DNW-Lewisvl	Starts	0	0	0	0	0	0	0	0	0	0
\$185-\$205	40'	BO 2Q10	Closings	0	0	0	0	0	0	0	0	0
			Housing Inv	0	0	0	0	0	0	0	0	0.0
			VDL Inv	0	0	0	0	0	0	0	0	0.0
West Oaks (18)	DNW-DOak	Starts	0	0	0	0	0	0	0	0	0	0
\$400-\$3000	160'	BO 2Q17	Closings	0	0	0	0	0	0	0	0	0
			Housing Inv	0	0	0	0	0	0	0	0	0.0
			VDL Inv	0	0	0	0	0	0	0	0	0.0
Westport Lakeview Vi (265)	DNW-Colony	Starts	0	8	0	7	3	0	0	0	0	0
\$970-\$980	25'	Act 1Q19	Closings	0	0	6	4	0	4	0	0	4
<i>P Custom Homes</i>			Housing Inv	6	14	8	11	14	10	10	10	30.0 mos
			VDL Inv	18	10	10	3	0	0	0	0	0.0
Whisper Creek (112)	DNW-FlwrMnd	Starts	0	0	0	0	0	0	0	0	0	0
\$615-\$830	93'	BO 2Q16	Closings	0	0	0	0	0	0	0	0	0
			Housing Inv	0	0	0	0	0	0	0	0	0.0
			VDL Inv	0	0	0	0	0	0	0	0	0.0
Whispering Oaks (Lew (152))	DNW-Lewisvl	Starts	0	0	0	0	0	0	0	0	0	0
\$102-\$172	50'-70'	BO 4Q00	Closings	0	0	0	0	0	0	0	0	0
			Housing Inv	0	0	0	0	0	0	0	0	0.0
			VDL Inv	0	0	0	0	0	0	0	0	0.0
Whitestone Village (82)	DNW-HighVil	Starts	0	0	0	0	0	0	0	0	0	0
\$0-\$0	30'	Future	Closings	0	0	0	0	0	0	0	0	0
			Housing Inv	0	0	0	0	0	0	0	0	0.0
			VDL Inv	0	0	0	0	0	0	0	0	0.0
Whyburn (81)	DNW-FlwrMnd	Starts	0	0	0	0	0	0	0	0	0	0
\$0-\$0	80'	Future	Closings	0	0	0	0	0	0	0	0	0
			Housing Inv	0	0	0	0	0	0	0	0	0.0
			VDL Inv	0	0	0	0	0	0	0	0	0.0
Wichita Chase (33)	DNW-FlwrMnd	Starts	0	0	0	0	0	0	0	0	0	0
\$356-\$465	90'-140'	BO 2Q06	Closings	0	0	0	0	0	0	0	0	0
			Housing Inv	0	0	0	0	0	0	0	0	0.0
			VDL Inv	0	0	0	0	0	0	0	0	0.0
Wichita Creek Estate (20)	DNW-FlwrMnd	Starts	0	0	0	0	0	0	0	0	0	0
\$460-\$650	160'-165'	BO 2Q01	Closings	0	0	0	0	0	0	0	0	0
			Housing Inv	0	0	0	0	0	0	0	0	0.0
			VDL Inv	0	0	0	0	0	0	0	0	0.0

Quarterly Activity & Inventory Report

Lewisville ISD

Sorted By Subdivision

Subdivision Name (Map No)	Sub Area	Price Range	Lot Size	Status	2Q21	3Q21	4Q21	1Q22	2Q22	3Q22	4Q22	1Q23	2Q23	Ann. Rates/ *Inv. Supply	
Wichita Estates (137) \$535-\$637 80'	DNW-HighVil BO 1Q23	Starts			0	0	1	0	0	0	1	0	0	1	
		Closings			0	0	0	0	0	0	1	1	0	2	
		Housing Inv			0	0	1	1	1	1	1	1	0	0	0.0
		VDL Inv			2	2	1	1	1	1	1	0	0	0	0.0
Willowbrook Addition (210) \$368-\$446 50'	DNW-Lewisvl BO 2Q19	Starts			0	0	0	0	0	0	0	0	0	0	
		Closings			0	0	0	0	0	0	0	0	0	0	
		Housing Inv			0	0	0	0	0	0	0	0	0	0	0.0
		VDL Inv			0	0	0	0	0	0	0	0	0	0	0.0
Windhaven Crossing T (246) \$506-\$537 22' Mattamy Homes	DNW-Lewisvl Act 1Q17	Starts			0	7	6	22	32	0	7	27	1	35	
		Closings			0	15	10	0	0	0	9	16	6	31	
		Housing Inv			19	11	7	29	61	61	59	70	65	25.2 mos	
		VDL Inv			109	102	96	74	42	42	35	8	7	2.4 mos	
Woods @ Wellington, (58) \$340-\$380 80'	DNW-FlwrMnd BO 4Q02	Starts			0	0	0	0	0	0	0	0	0	0	
		Closings			0	0	0	0	0	0	0	0	0	0	
		Housing Inv			0	0	0	0	0	0	0	0	0	0	0.0
		VDL Inv			0	0	0	0	0	0	0	0	0	0	0.0
Wright Estates (48) \$559-\$590 223'	DNW-FlwrMnd BO 3Q08	Starts			0	0	0	0	0	0	0	0	0	0	
		Closings			0	0	0	0	0	0	0	0	0	0	
		Housing Inv			0	0	0	0	0	0	0	0	0	0	0.0
		VDL Inv			0	0	0	0	0	0	0	0	0	0	0.0
Wyndale Meadows Addi (244) \$383-\$505 50'-65'	DNW-Lewisvl BO 3Q20	Starts			0	0	0	0	0	0	0	0	0	0	
		Closings			0	0	0	0	0	0	0	0	0	0	
		Housing Inv			0	0	0	0	0	0	0	0	0	0	0.0
		VDL Inv			0	0	0	0	0	0	0	0	0	0	0.0
Selection Totals		Starts			294	358	253	256	305	267	210	259	237	973	
		Closings			218	241	276	177	311	271	265	407	241	1,184	
		Housing Inv			779	896	873	952	946	942	887	739	735	7.4 mos	
		VDL Inv			1,828	1,521	1,779	1,566	1,232	1,056	955	746	543	6.7 mos	

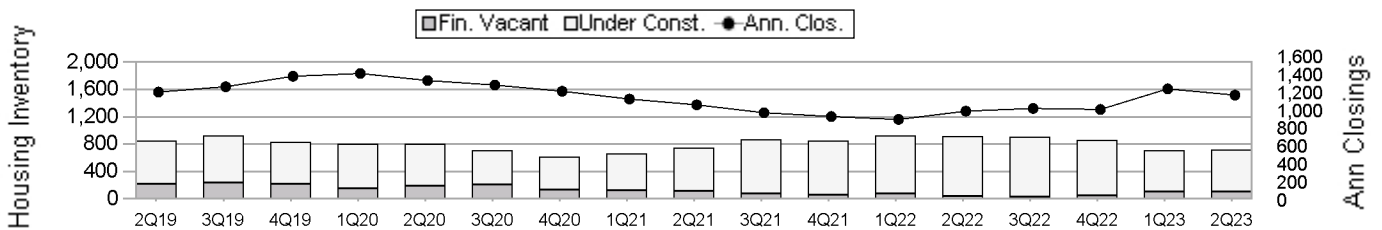
*Inventory Supply = Housing Inv/(Annual Closings/12)
 Vacant Developed Lot Supply = VDL Inv/(Annual Starts/12)
 N/A indicates Inventory is present but cannot calculate months of supply without starts or closings (see above).

Historical Housing Activity Summary

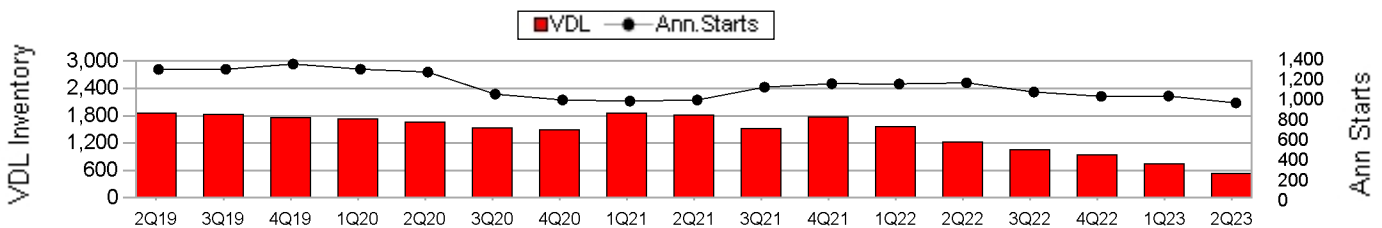
Lewisville ISD

Qtr	Qtr Clos	Ann Clos	Model	FinVac	UC	Total Inv	Total Supply	Qtr Starts	Ann Starts	VDL	VDL Supply	Fut Lots	Ann Lot Deliv
2Q19	361	1,218	75	215	631	921	9.1	312	1,305	1,868	17.2	2,952	1,051
3Q19	380	1,278	62	235	693	990	9.3	449	1,306	1,832	16.8	2,851	1,247
4Q19	387	1,394	47	221	612	880	7.6	277	1,358	1,772	15.7	2,661	1,156
1Q20	297	1,425	50	152	650	852	7.2	269	1,307	1,736	15.9	2,584	1,122
2Q20	283	1,347	51	192	609	852	7.6	283	1,278	1,664	15.6	2,580	1,074
3Q20	329	1,296	49	212	493	754	7.0	231	1,060	1,536	17.4	2,475	764
4Q20	318	1,227	43	139	473	655	6.4	219	1,002	1,499	18.0	2,331	729
1Q21	210	1,140	39	130	534	703	7.4	258	991	1,867	22.6	1,691	1,122
2Q21	218	1,075	35	112	632	779	8.7	294	1,002	1,828	21.9	1,661	1,166
3Q21	241	987	30	83	783	896	10.9	358	1,129	1,521	16.2	1,918	1,114
4Q21	276	945	28	58	787	873	11.1	253	1,163	1,779	18.4	1,637	1,443
1Q22	177	912	33	79	840	952	12.5	256	1,161	1,566	16.2	1,762	860
2Q22	311	1,005	32	44	870	946	11.3	305	1,172	1,232	12.6	1,747	576
3Q22	271	1,035	34	36	872	942	10.9	267	1,081	1,056	11.7	1,696	616
4Q22	265	1,024	33	51	803	887	10.4	210	1,038	955	11.0	1,627	214
1Q23	407	1,254	32	105	602	739	7.1	259	1,041	746	8.6	1,578	221
2Q23	241	1,184	22	110	603	735	7.4	237	973	543	6.7	1,545	284

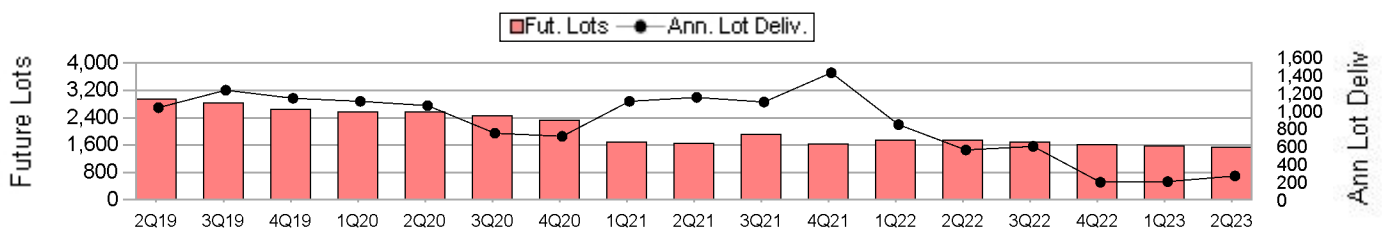
Housing Inventory and Closings By Quarter



Vacant Developed Lots and Starts By Quarter



Future Lots and Deliveries By Quarter



Price Range Analysis

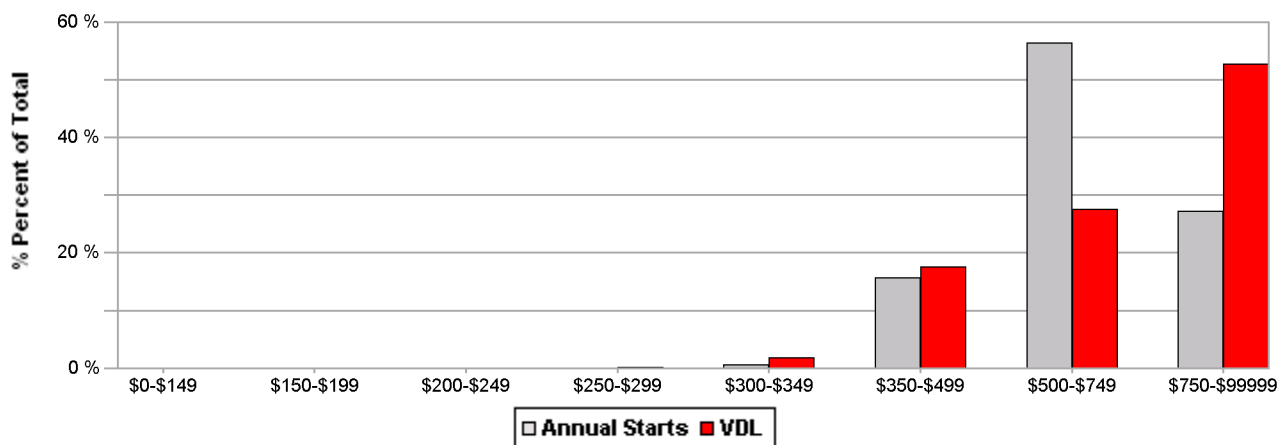
Lewisville ISD

\$0 \$150,000 \$200,000 \$250,000 \$300,000 \$350,000 \$500,000 \$750,000
 \$149,999 \$199,999 \$249,999 \$299,999 \$349,999 \$499,999 \$749,999 \$999,999 *Total

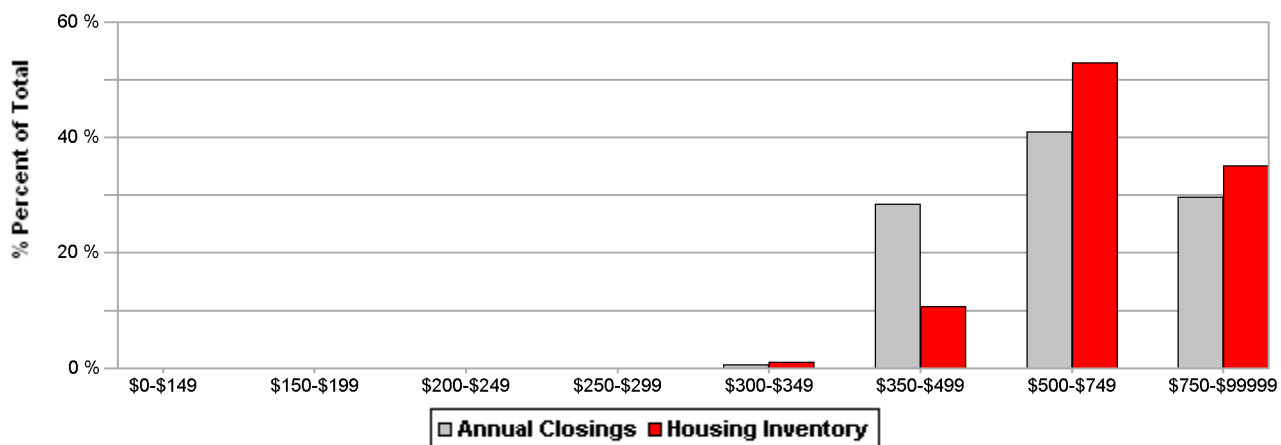
Custom Market Numerical Totals	Ann Starts	1	6	153	549	265	973
	Ann Closings	1	8	338	486	352	1,184
	Housing Inv	1	8	79	389	258	735
	VDL Inv	1	10	96	150	286	543
	Housing Supply (Mos)	20.0	12.0	2.8	9.6	8.8	7.4
VDL Supply (Mos)	12.0	20.8	7.5	3.3	13.0	6.7	

Custom Market Percentage Totals	Ann Starts	0.1 %	0.6 %	15.7 %	56.4 %	27.2 %	100 %
	Ann Closings	0.1 %	0.7 %	28.5 %	41.0 %	29.7 %	100 %
	Housing Inv	0.1 %	1.1 %	10.7 %	53.0 %	35.1 %	100 %
	VDL Inv	0.2 %	1.9 %	17.6 %	27.6 %	52.7 %	100 %

Price Range Distribution of Annual Starts vs VDL



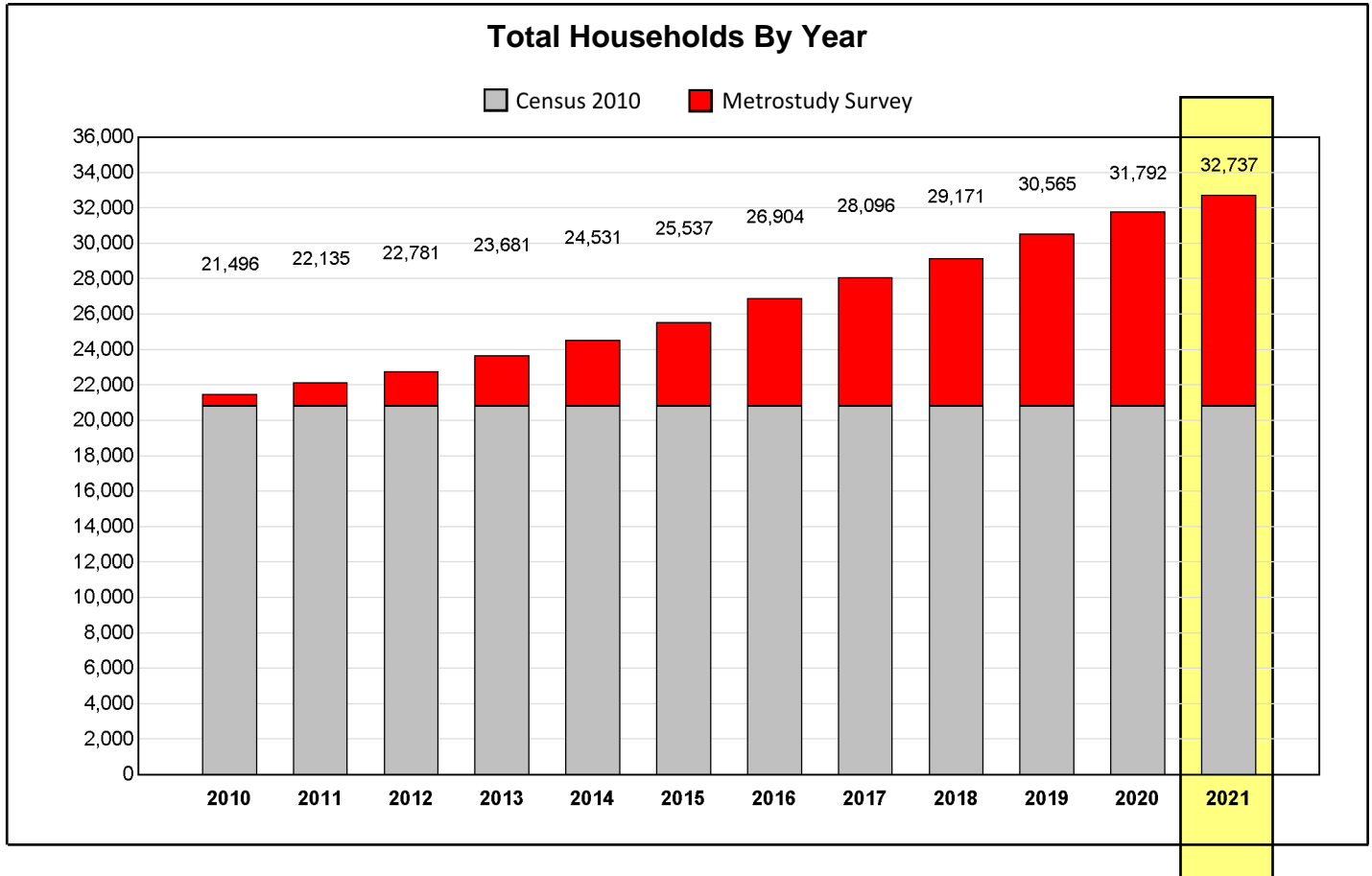
Price Range Distribution of Annual Closings vs Housing Inventory



*Because this report excludes sections without pricing information, the totals may not match those shown on other summary reports.

Household Growth Summary

Lewisville ISD



Household Development Summary								
Source	Selected Subdivisions		Households By Construction Status			Occupied Units	Annual Closings	Potential Households
	Count	Status	Future Lots	Vacant Lots	Housing Inventory			
Census						20,813		
Metrostudy	265	Builtout	0	0	0	7,852 ¹		
Metrostudy	45	Active	328	543	735	4,072 ¹		
Metrostudy	24	Future	1,217	0	0	0		
Totals	334		1,545	543	735	32,737	1,184	35,560

1. Cumulative closings since the Year 2010; Occupied units are recorded from onsite surveyor inspections performed during the Metrostudy residential survey. Closings are calculated as the change in occupied units between quarters.