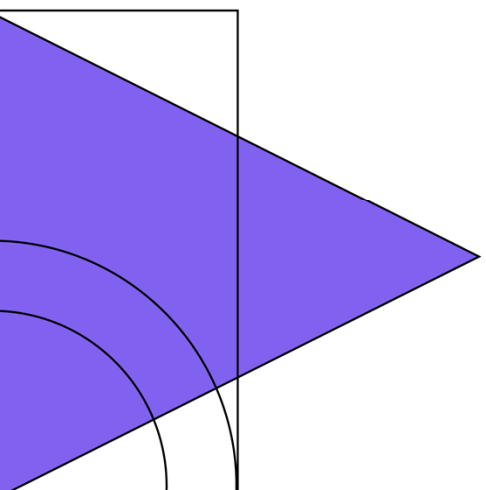
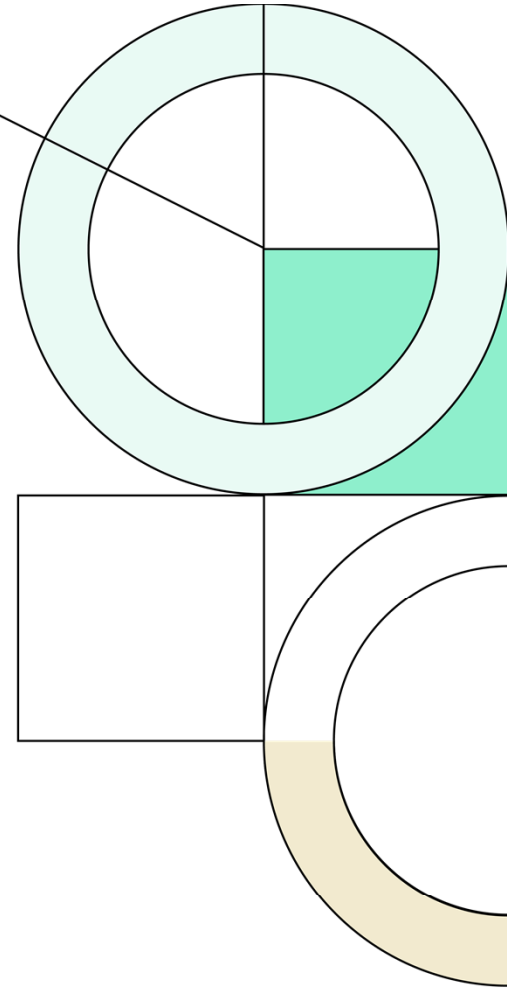




**Lewisville  
Independent  
School  
District**

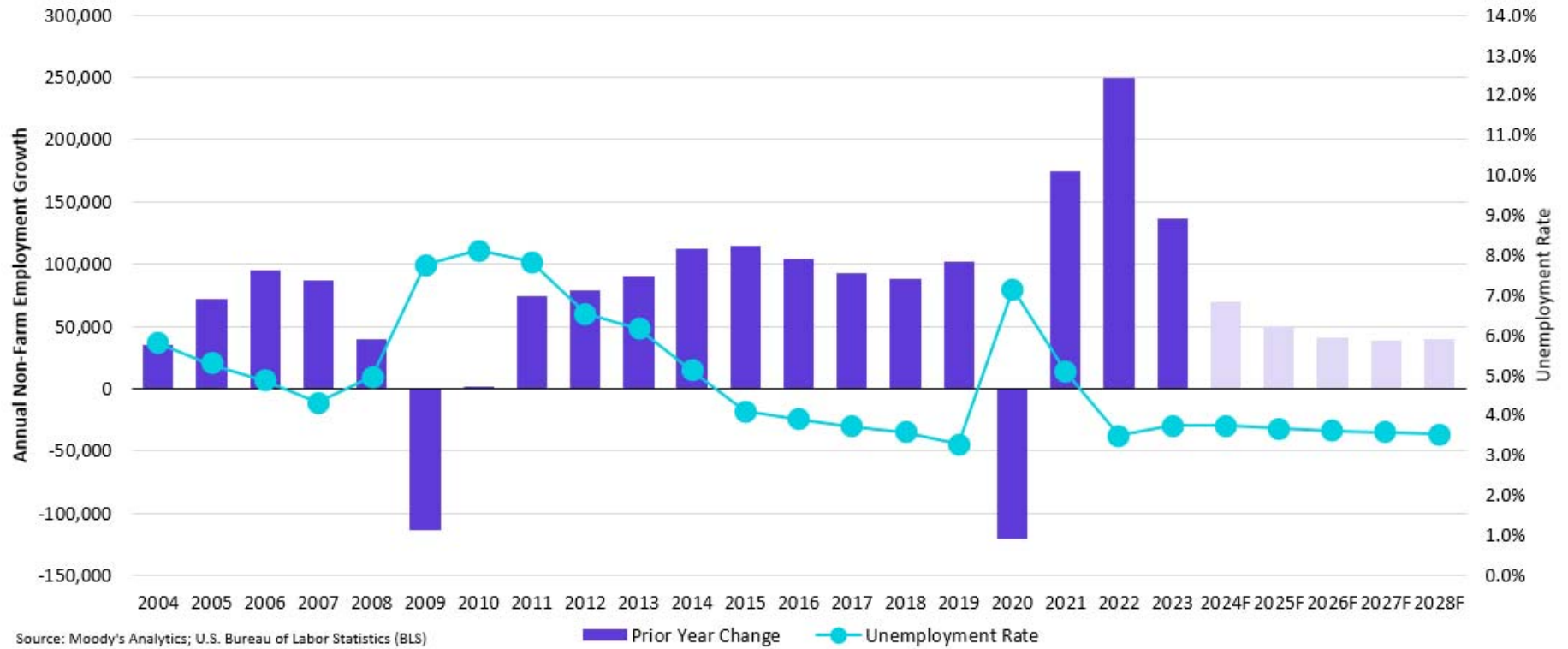
1Q24

Demographic Report





# DFW MSA Employment Growth



Dallas-Fort Worth-Arlington, TX Metropolitan Statistical Area - Moody's Analytics Five-Year Forecast

Category	2014	2015	2016	2017	2018	2019	2020	2021	2022	2023	2024F	2025F	2026F	2027F	2028F
Non-Farm Employment	3,286,642	3,401,558	3,505,750	3,598,550	3,686,275	3,788,017	3,667,750	3,841,775	4,091,775	4,228,642	4,298,115	4,348,171	4,388,968	4,427,350	4,467,563
Prior Year Change	111,883	114,917	104,192	92,800	87,725	101,742	(120,267)	174,025	250,000	136,867	69,473	50,057	40,796	38,382	40,213
Annual % Change	3.5%	3.5%	3.1%	2.6%	2.4%	2.8%	-3.2%	4.7%	6.5%	3.3%	1.6%	1.2%	0.9%	0.9%	0.9%
Unemployment Rate	5.1%	4.1%	3.9%	3.7%	3.6%	3.3%	7.2%	5.1%	3.5%	3.8%	3.8%	3.7%	3.6%	3.6%	3.6%

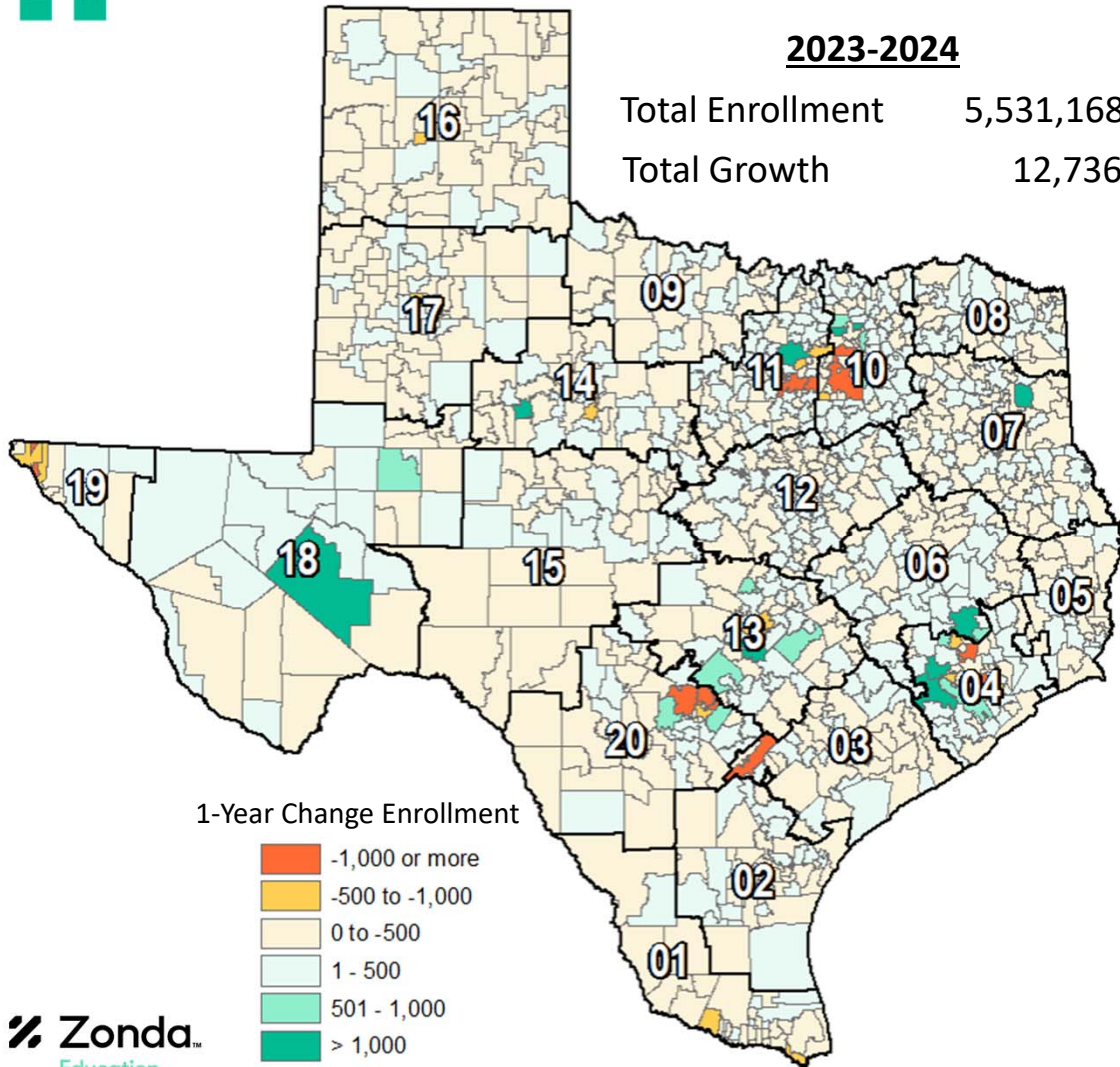


# State Enrollment Trends

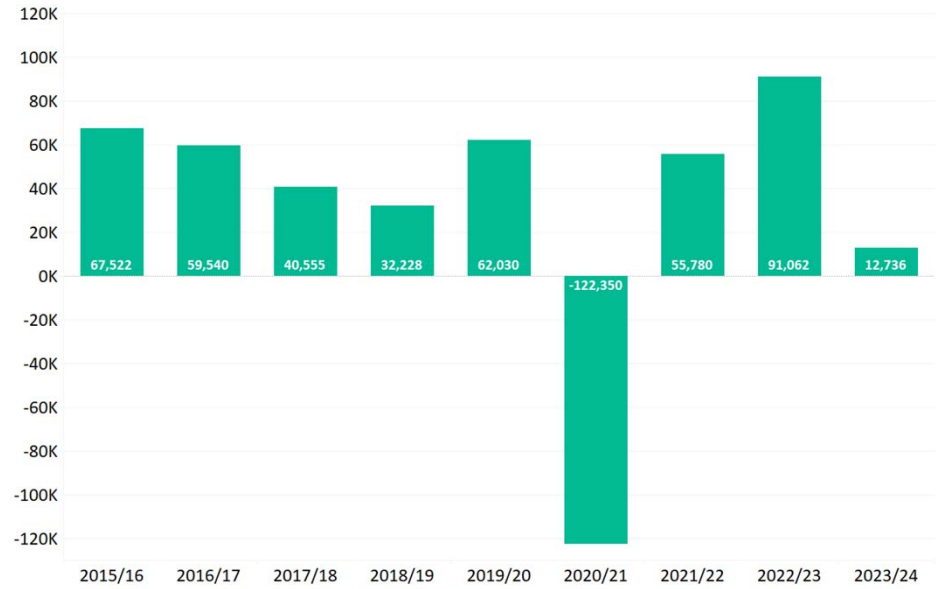
**2023-2024**

Total Enrollment 5,531,168

Total Growth 12,736



### Texas ISD Enrollment Change

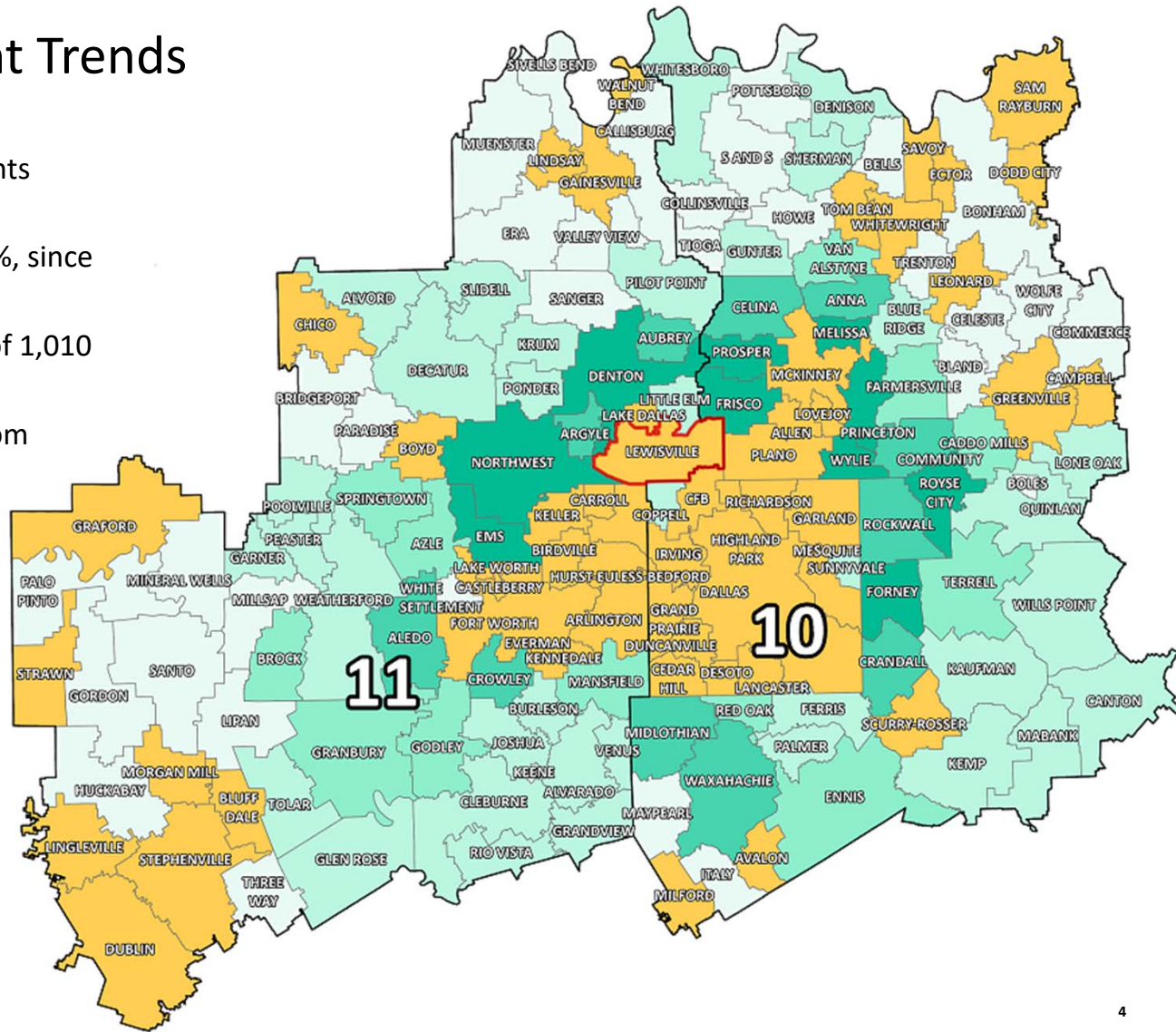
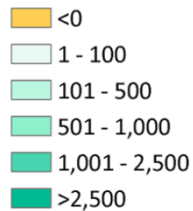




# Region 10 & 11 Enrollment Trends

- Lewisville ISD enrollment declined by 3,778 students between 2018/19 and 2023/24 (-7.2%).
- LISD enrollment declined by 620 students, or -1.3%, since 2022/23
- Region 11 has seen a 5-year enrollment increase of 1,010 students (0.2% growth).
- Student enrollment declined by 1,377 students from 2022/23, in Region 11 (-0.2% growth).

5-Year Change Enrollment





# DFW New Home Starts & Closings

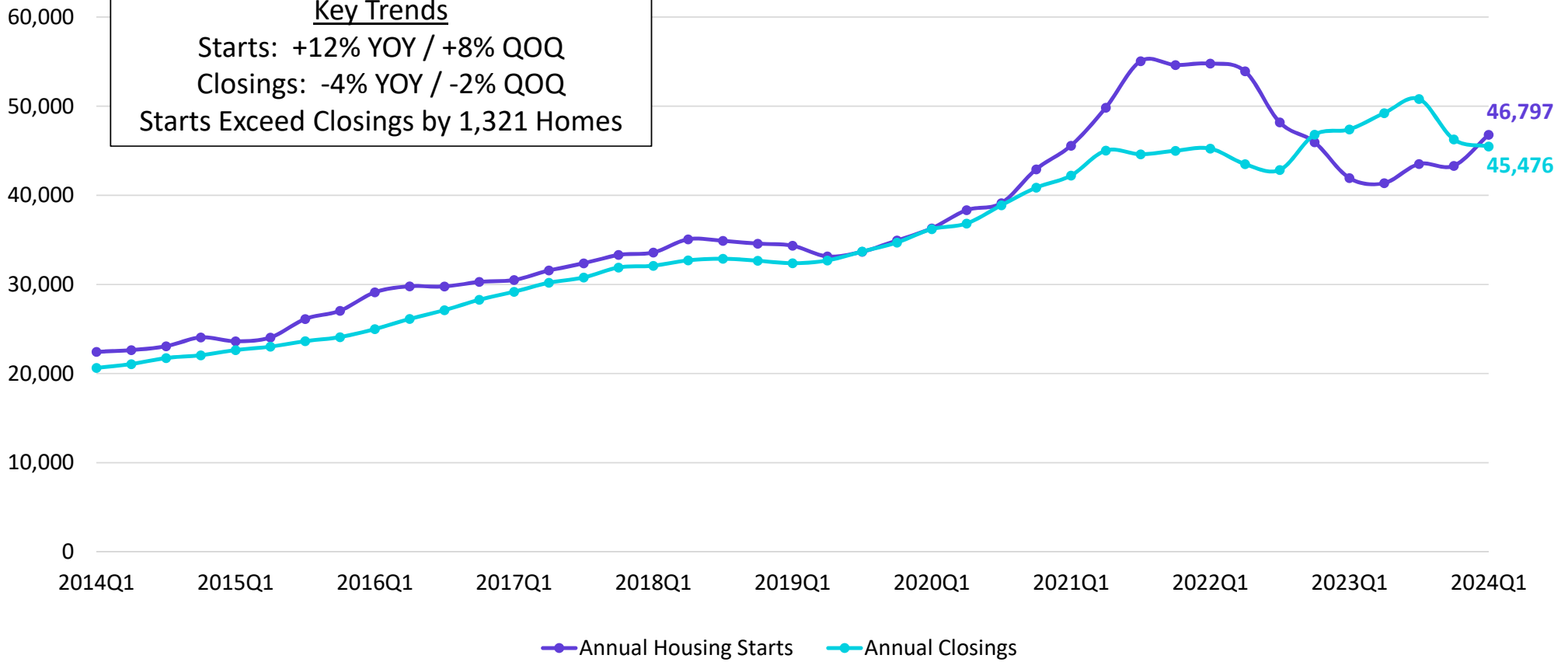
### Annual Housing Starts vs. Annual Closings

#### Key Trends

Starts: +12% YOY / +8% QOQ

Closings: -4% YOY / -2% QOQ

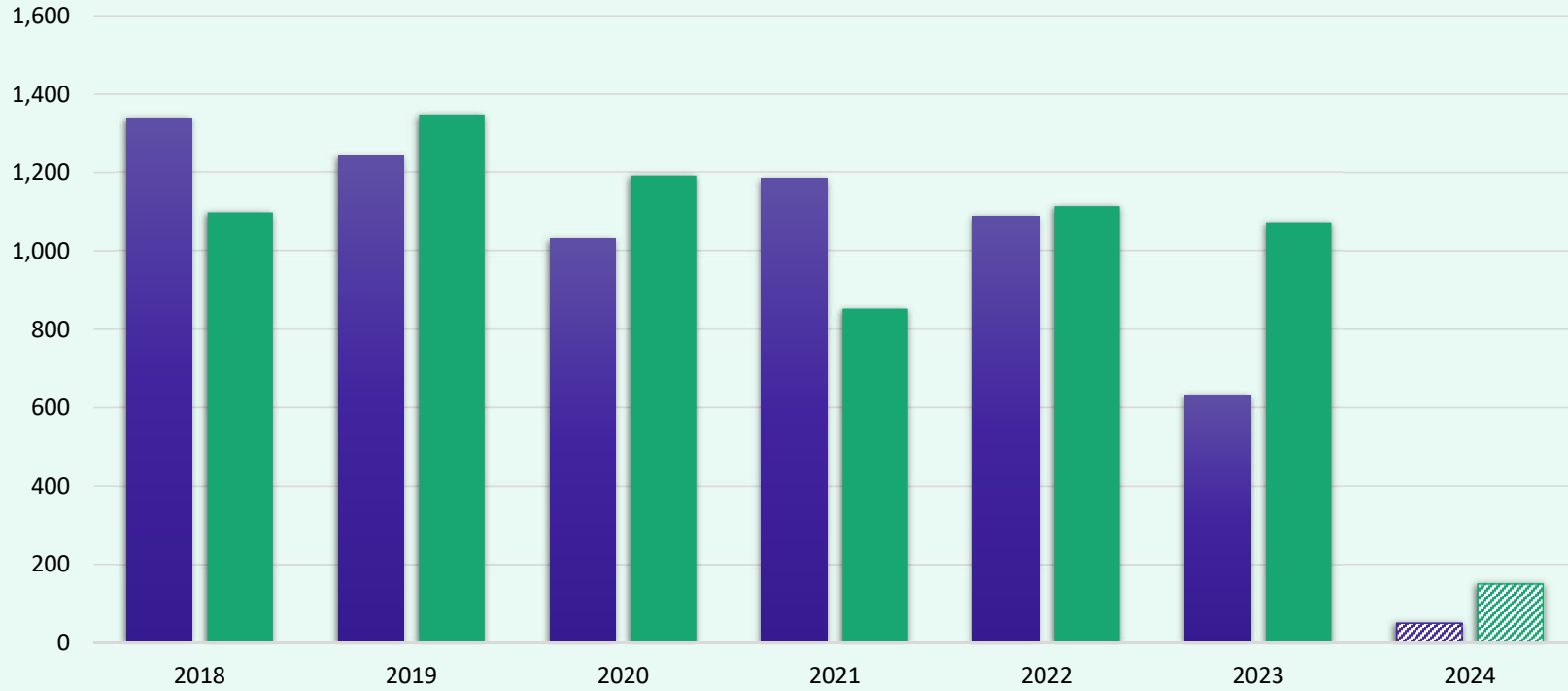
Starts Exceed Closings by 1,321 Homes







# District New Home Starts and Closings



■ Annual Starts ■ Annual Closings

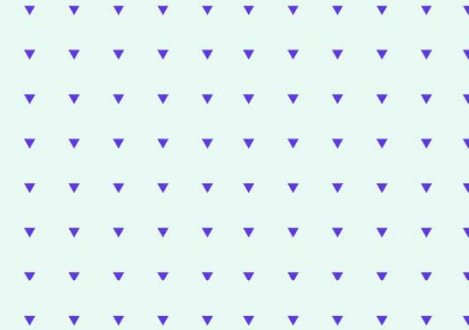
Starts	2018	2019	2020	2021	2022	2023	2024
1Q	252	317	267	254	263	244	50
2Q	366	273	280	319	346	224	
3Q	483	372	245	359	274	62	
4Q	239	280	239	252	206	103	
Total	1,340	1,242	1,031	1,184	1,089	633	50

Closings	2018	2019	2020	2021	2022	2023	2024
1Q	185	265	303	214	205	394	150
2Q	307	341	272	203	325	249	
3Q	327	372	300	211	284	135	
4Q	279	370	317	225	300	295	
Total	1,098	1,348	1,192	853	1,114	1,073	150



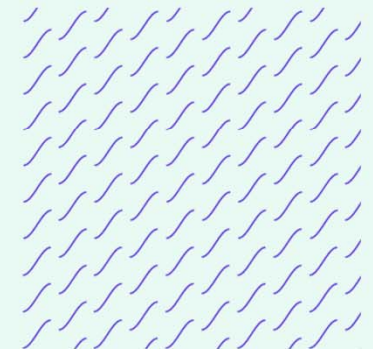
# District Housing Overview by Elementary Zone

Elementary	Annual Starts	Quarter Starts	Annual Closings	Quarter Closings	Under Const.	Inventory	Vacant Dev. Lots	Future
BLUEBONNET	12	0	24	0	8	8	30	127
BRIDLEWOOD	0	0	1	1	0	0	2	0
CAMEY	0	0	5	3	0	5	0	0
CASTLE HILLS	7	0	0	0	22	23	21	0
CREEKSIDE	0	0	0	0	0	0	0	16
DEGAN	0	0	20	2	0	28	4	0
DONALD	0	0	0	0	0	0	0	0
ETHRIDGE	0	0	0	0	0	0	0	4
FLOWER MOUND	138	9	102	21	95	108	11	0
HERITAGE	4	1	20	2	2	2	34	57
INDEPENDENCE	54	10	120	20	20	31	40	0
INDIAN CREEK	18	1	61	13	10	13	24	61
LAKELAND	0	0	0	0	0	0	0	52
LEWISVILLE	0	0	0	0	0	0	31	52
LIBERTY	6	0	31	2	5	7	9	112
MCAULIFFE	0	0	0	0	0	0	9	0
MEMORIAL	103	8	253	52	16	36	159	10
MILL STREET	0	0	18	0	0	0	0	12
MORNINGSIDE	53	11	48	11	15	28	4	74
OLD SETTLERS	4	1	9	0	3	3	5	4
OWEN	0	0	5	0	0	0	23	0
PRAIRIE TRAIL	0	0	0	0	0	0	0	141
ROCKBROOK	0	0	14	0	0	0	0	138
SOUTHRIDGE	12	0	28	15	6	15	19	0
TIMBER CREEK	0	0	0	0	0	0	0	15
TOM HICKS	8	1	41	8	16	33	151	292
VALLEY RIDGE	0	0	29	0	0	0	0	232
VICKERY	0	0	0	0	0	0	0	54
WELLINGTON	20	8	0	0	20	20	0	9
<b>GRAND TOTAL</b>	<b>439</b>	<b>50</b>	<b>829</b>	<b>150</b>	<b>238</b>	<b>360</b>	<b>576</b>	<b>1,462</b>



- Highest activity in the category
- Second highest activity in the category
- Third highest activity in the category

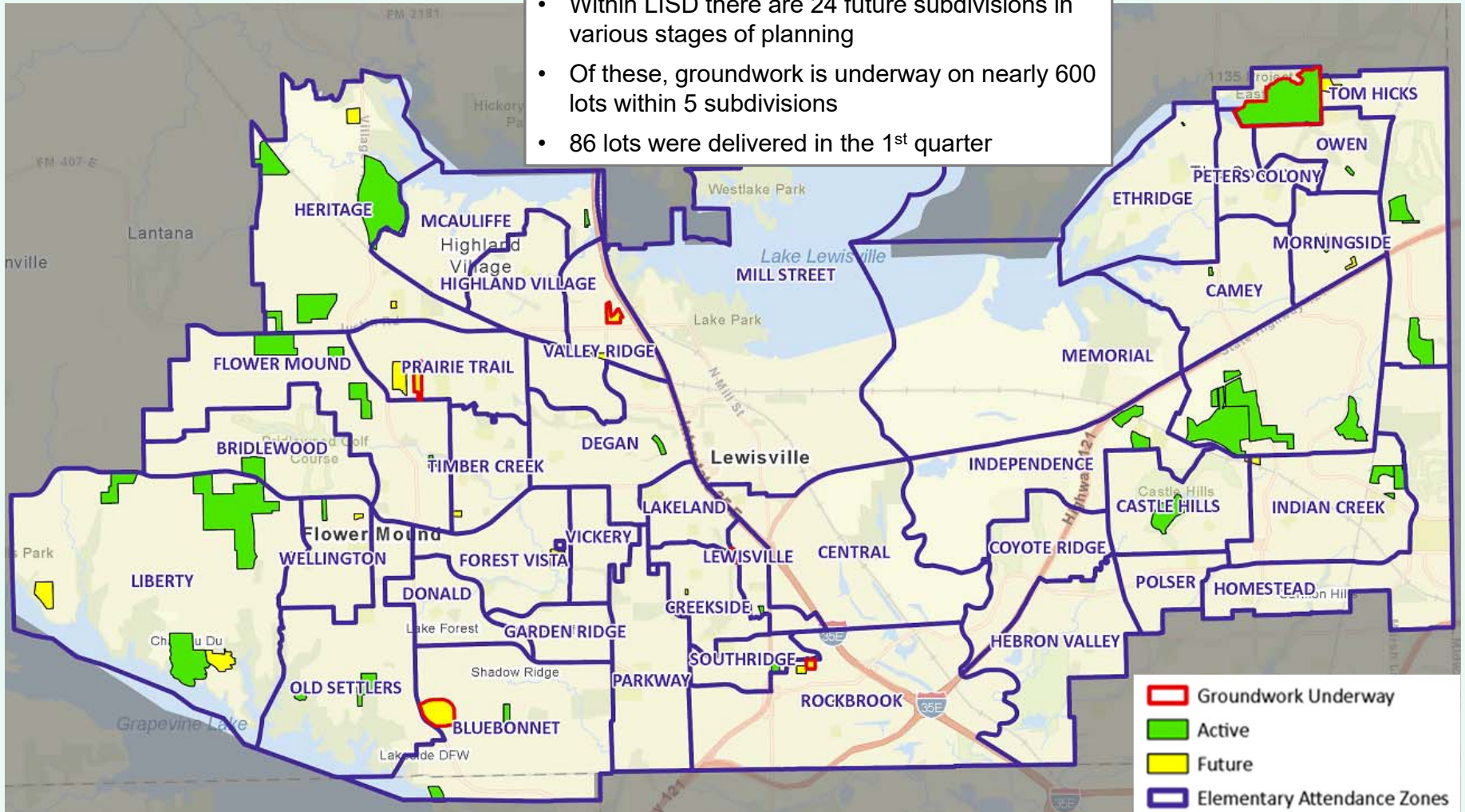
\* Only elementary zones with activity are shown





# District Housing Overview

- The district has 41 actively building subdivisions
- Within LISD there are 24 future subdivisions in various stages of planning
- Of these, groundwork is underway on nearly 600 lots within 5 subdivisions
- 86 lots were delivered in the 1<sup>st</sup> quarter







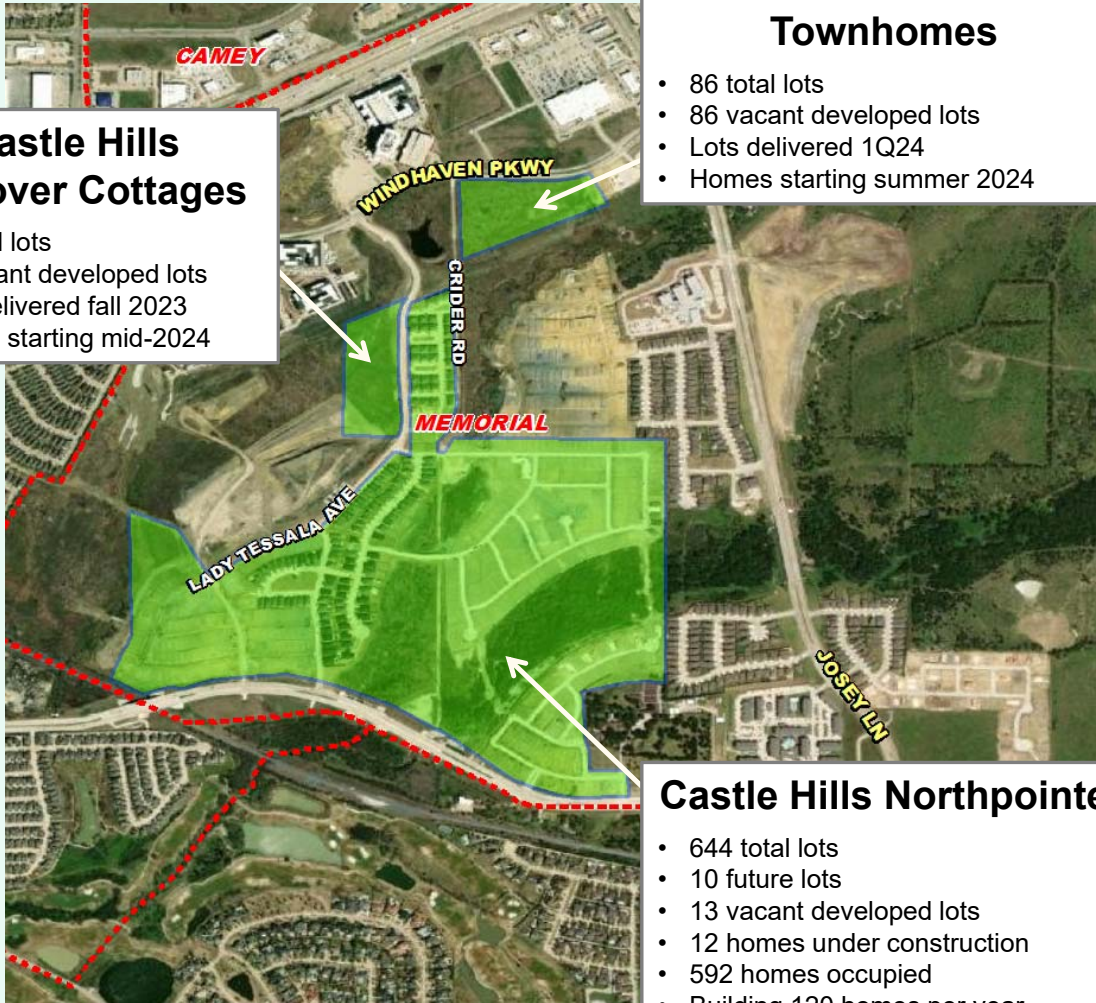
# Residential Activity

## Castle Hills Windhaven Townhomes

- 86 total lots
- 86 vacant developed lots
- Lots delivered 1Q24
- Homes starting summer 2024

## Castle Hills Discover Cottages

- 57 total lots
- 57 vacant developed lots
- Lots delivered fall 2023
- Homes starting mid-2024



## Castle Hills Northpointe

- 644 total lots
- 10 future lots
- 13 vacant developed lots
- 12 homes under construction
- 592 homes occupied
- Building 120 homes per year

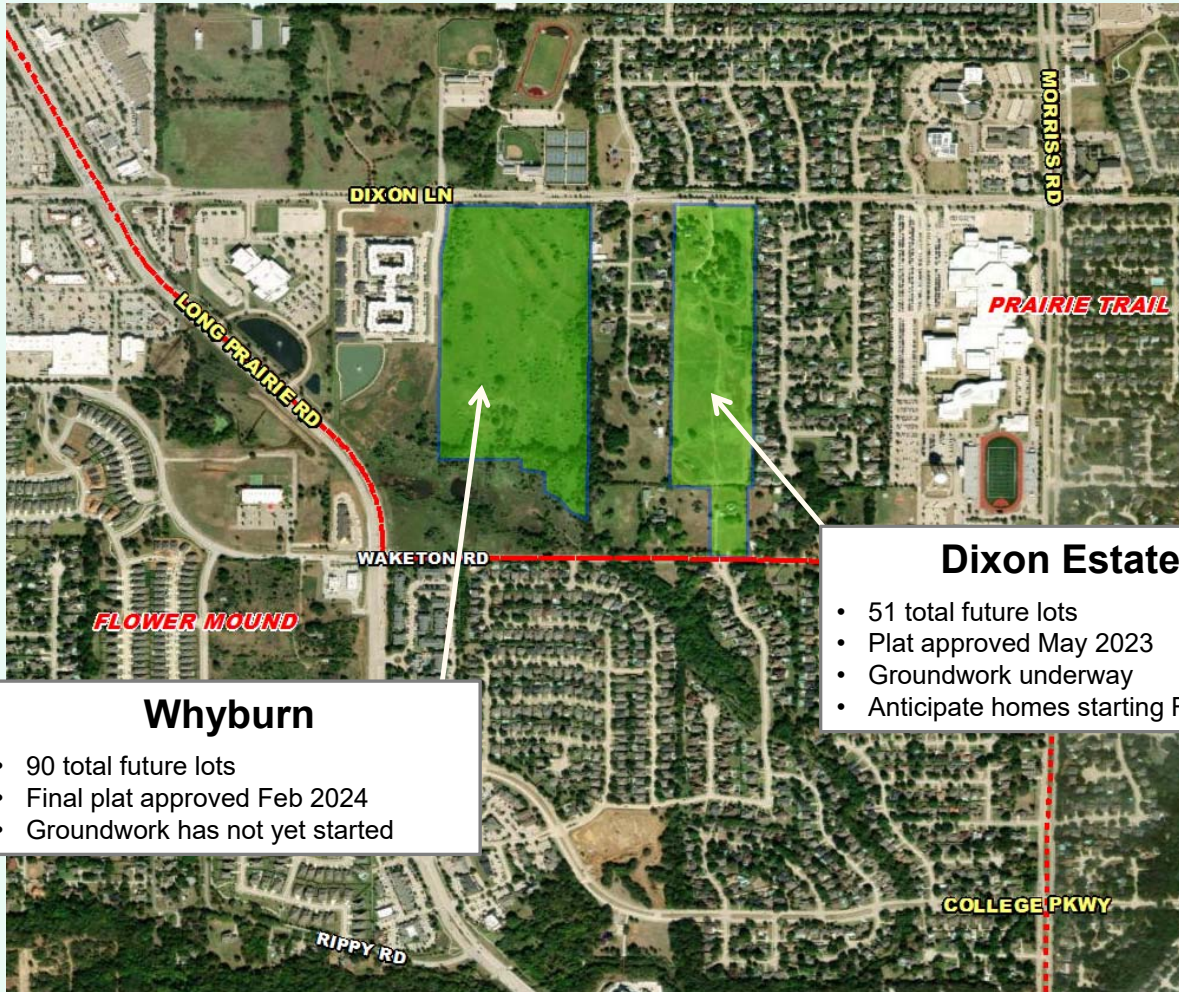
April 2024







# Residential Activity



## Whyburn

- 90 total future lots
- Final plat approved Feb 2024
- Groundwork has not yet started

## Dixon Estates

- 51 total future lots
- Plat approved May 2023
- Groundwork underway
- Anticipate homes starting Fall 2024



April 2024







# Residential Activity

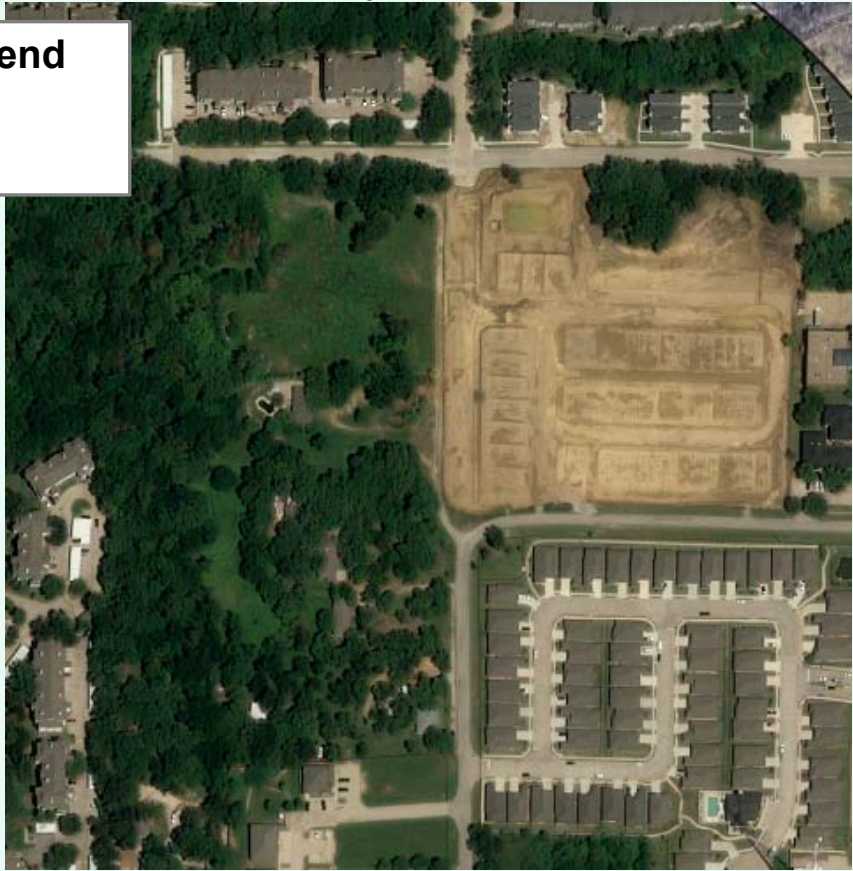


**Willows at Oakbend**

- 62 total future lots
- Plat approved May 2023
- Groundwork underway

**Parks at Uecker**

- 58 total future townhome lots
- Zoning approved Sep 2023
- Plat in design



April 2024

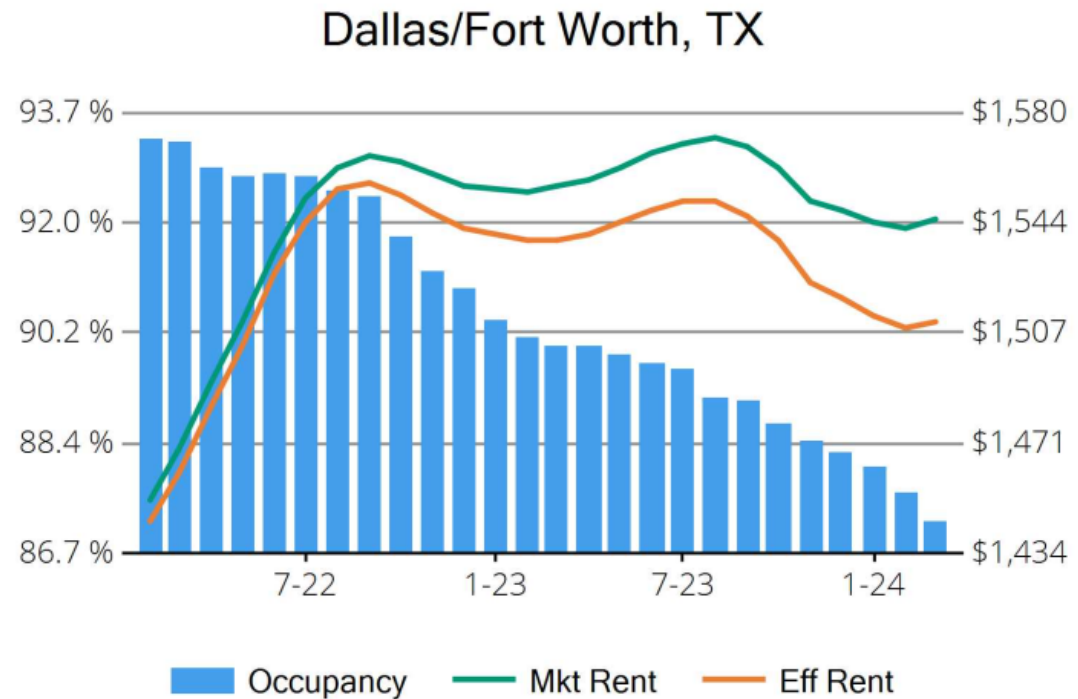


# Housing Market Trends: Multi-family Market- March 2024



## Stabilized and Lease-up Properties

Conventional Properties	Mar 2024	Annual Change
Occupancy	87.2	-3.1%
Unit Change	36,983	
Units Absorbed (Annual)	9,959	
Average Size (SF)	876	+0.3%
Asking Rent	\$1,545	-0.7%
Asking Rent per SF	\$1.76	-1.0%
Effective Rent	\$1,511	-1.7%
Effective Rent per SF	\$1.72	-2.1%
% Offering Concessions	33%	+87.2%
Avg. Concession Package	6.0%	+14.1%

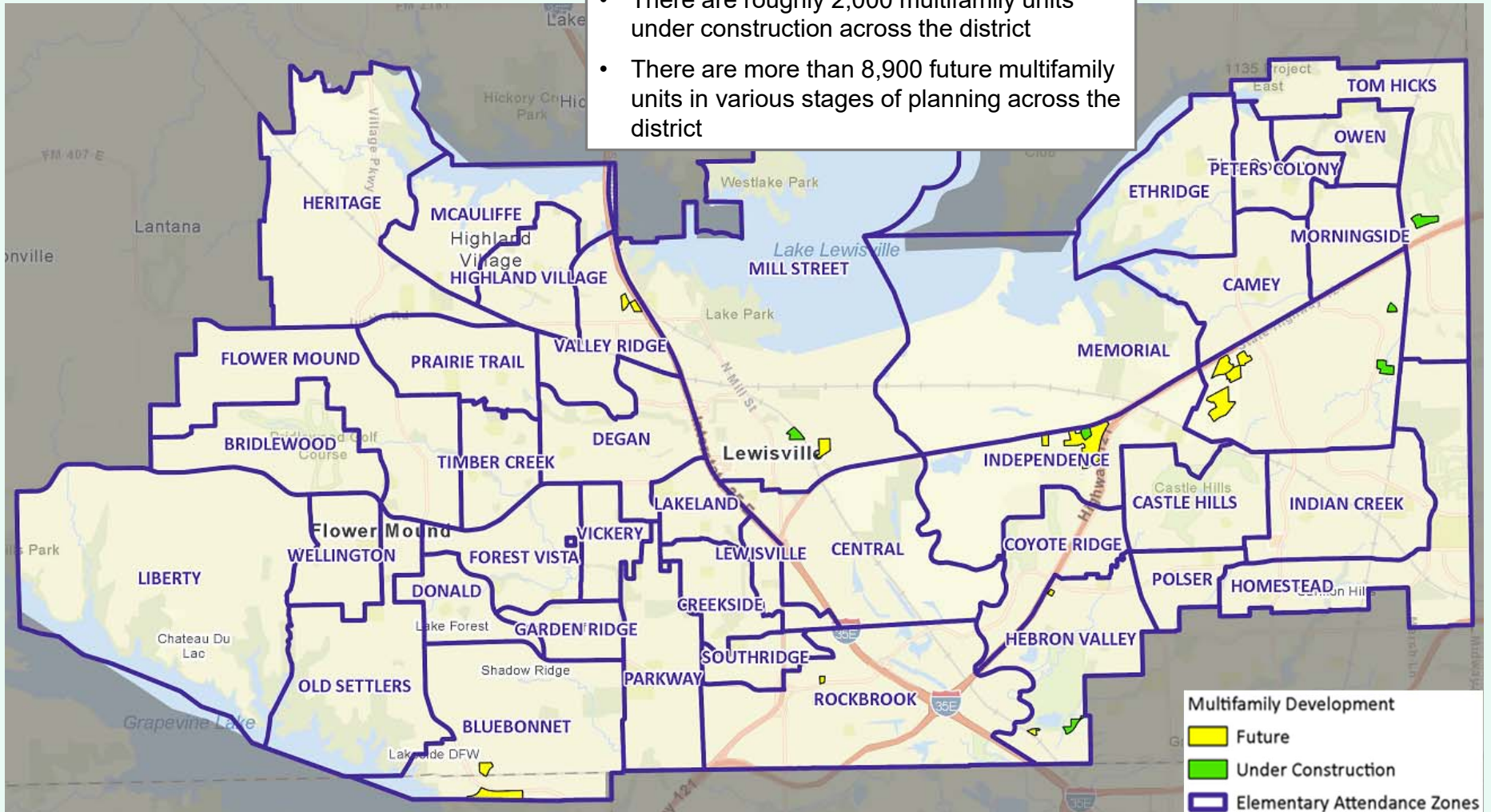






# District Multifamily Overview

- There are roughly 2,000 multifamily units under construction across the district
- There are more than 8,900 future multifamily units in various stages of planning across the district

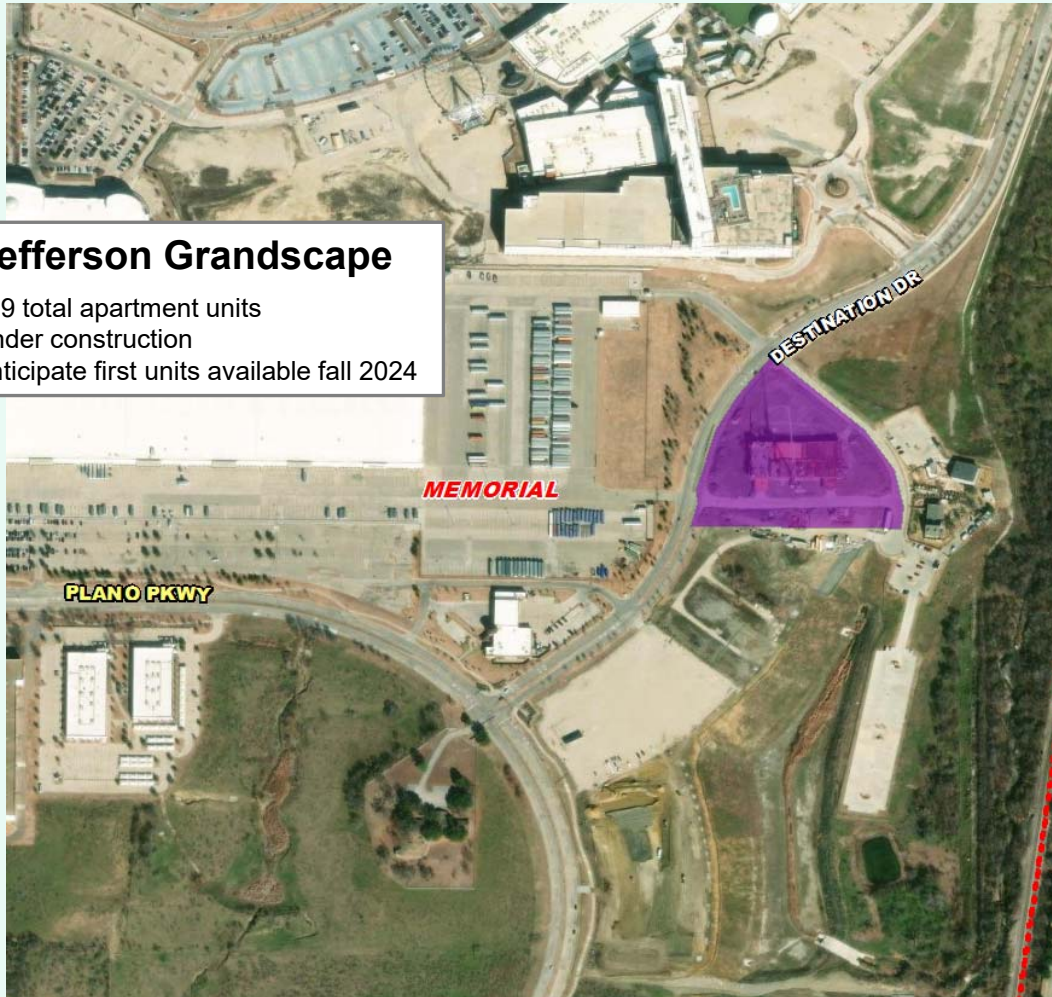




## Multifamily Activity

### Jefferson Grandscape

- 319 total apartment units
- Under construction
- Anticipate first units available fall 2024



*April 2024*



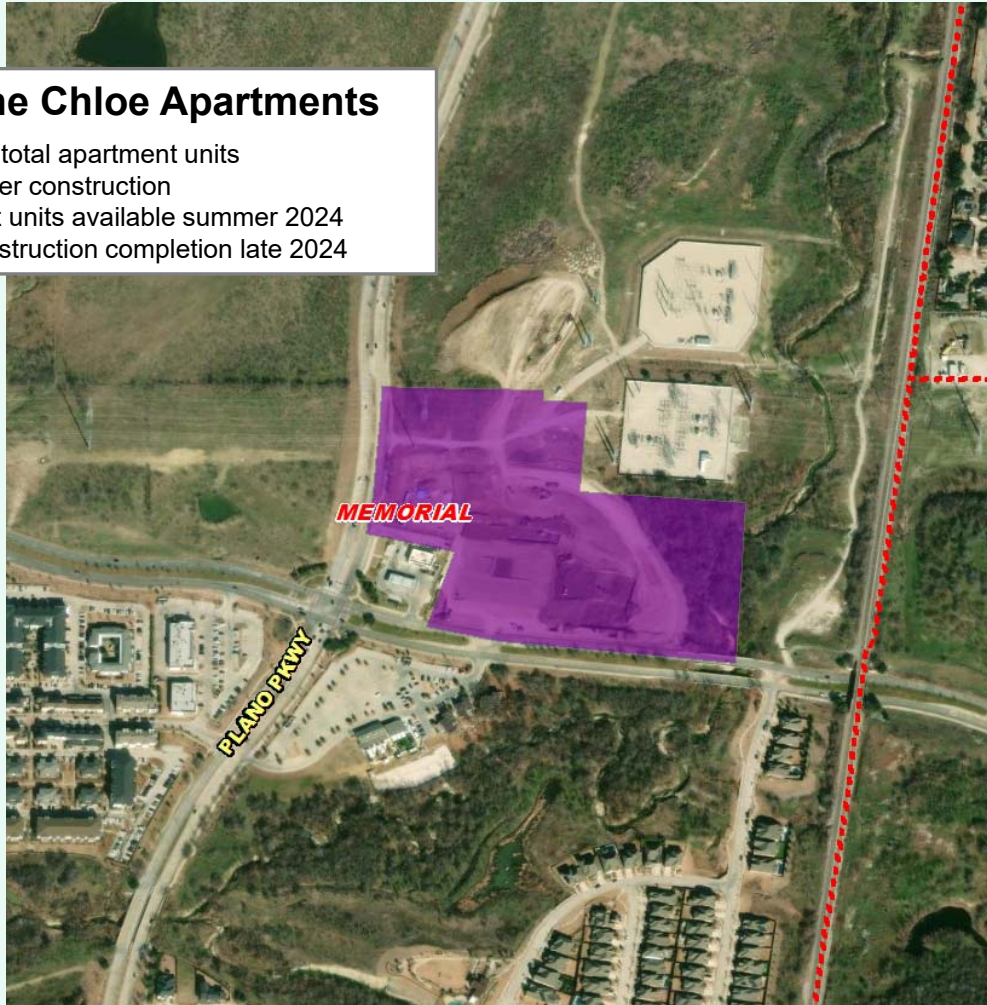




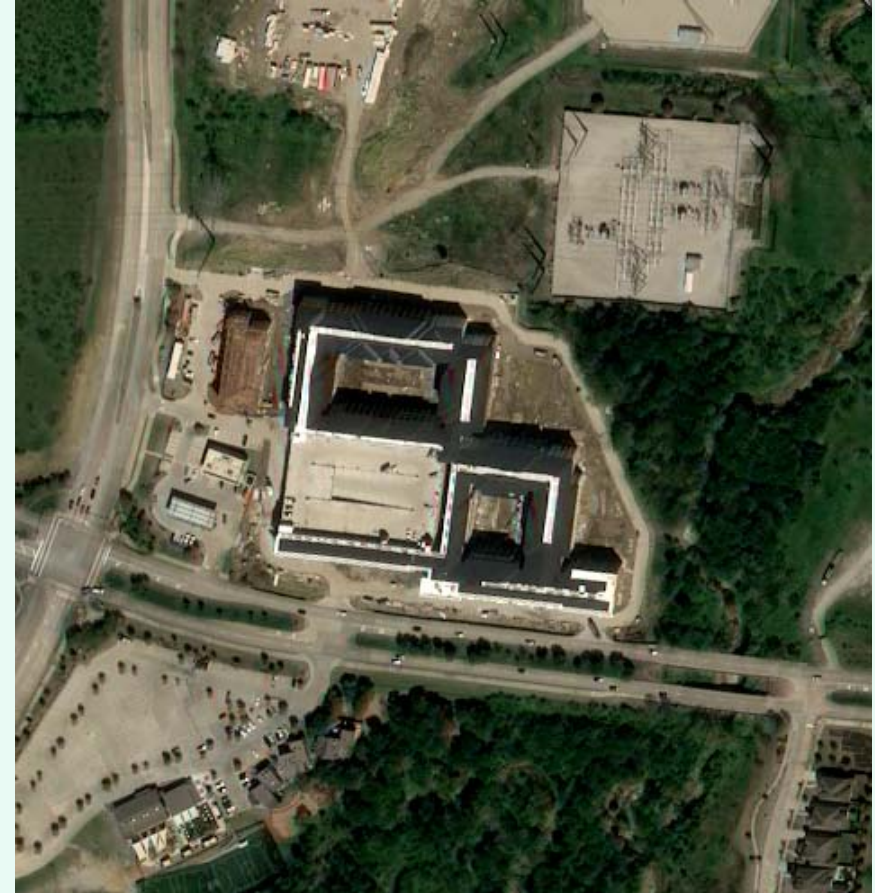
# Multifamily Activity

## The Chloe Apartments

- 419 total apartment units
- Under construction
- First units available summer 2024
- Construction completion late 2024



*April 2024*







## Multifamily Activity



### Jefferson Castle Hills

- 761 total apartment units
- Phase 1 (380 units) groundwork underway
- Construction starting late 2024
- First units available 4Q25



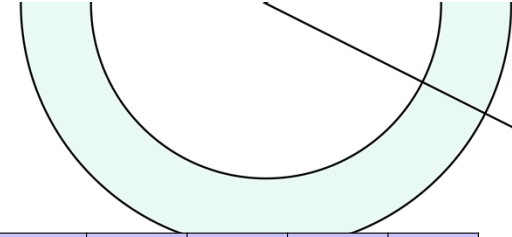
*April 2024*







# TEA Transfer Report



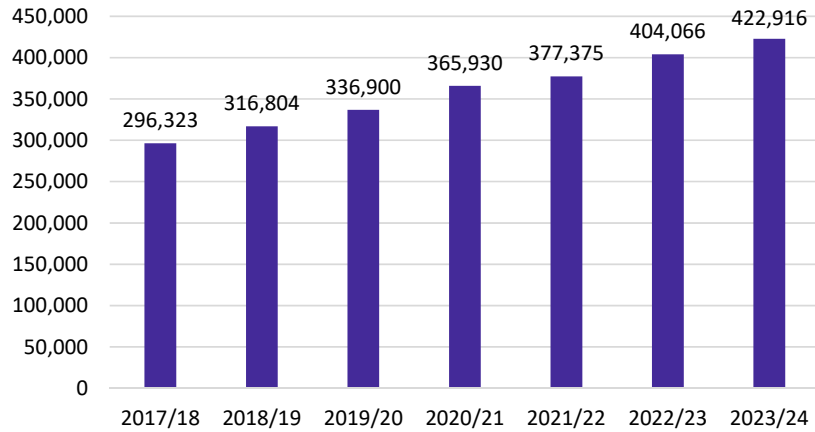
Transfers In From	2018/19	2019/20	2020/21	2021/22	2022/23	2023/24	5 Year Change
Argyle ISD	10	10	19	18	26	33	23
Carrllton-Farmers Branch ISD	67	93	118	134	146	184	117
Denton ISD	195	252	308	354	375	416	221
Frisco ISD	71	87	81	73	80	73	2
Lake Dallas ISD	65	101	102	115	118	135	70
Little Elm ISD	29	54	68	66	80	81	52
Northwest ISD	18	24	43	52	59	50	32
Plano ISD	4	21	24	25	35	40	36
Prosper ISD	0	3	4	10	10	4	4
<b>Total Transfers In*</b>	<b>550</b>	<b>748</b>	<b>862</b>	<b>954</b>	<b>1,035</b>	<b>1,141</b>	<b>591</b>

Transfers Out To	2018/19	2019/20	2020/21	2021/22	2022/23	2023/24	5 Year Change
Argyle ISD	25	15	17	23	15	4	-21
Brazos River Charter School	3	14	11	4	3	0	-3
Carrllton-Farmers Branch ISD	202	249	319	347	334	330	128
Coppell ISD	173	168	166	188	193	198	25
Denton ISD	15	4	19	37	42	53	38
Frisco ISD	60	56	58	57	59	55	-5
Grapevine-Colleyville ISD	49	55	67	73	65	54	5
Great Hearts Texas	22	28	28	29	30	40	18
Hallsville ISD (Virtual)	24	43	50	77	79	81	57
Harmony Science Academy	328	312	340	336	336	325	-3
International Leadership of Texas	3	4	3	3	3	10	7
Lake Dallas ISD	30	29	38	44	28	25	-5
Leadership Prep School	62	62	72	71	69	69	7
Little Elm ISD	11	4	11	11	4	3	-8
Manara Academy	11	4	10	4	3	3	-8
N. TX Collegiate Academy	200	253	258	264	267	259	59
Plano ISD	23	20	28	44	48	48	25
Premier High Schools	43	28	22	43	33	43	0
Texas College Preparatory Academy	1,645	1,747	1,882	1,877	1,845	1,763	118
Trivium Academy	350	344	338	290	309	322	-28
Universal Academy	217	223	226	183	181	12	-205
Uplift Education	113	105	101	82	76	73	-40
Winfrey Academy Charter Schools	83	74	71	68	49	31	-52
<b>Total Transfers Out*</b>	<b>3,817</b>	<b>4,004</b>	<b>4,317</b>	<b>4,373</b>	<b>4,305</b>	<b>4,227</b>	<b>410</b>

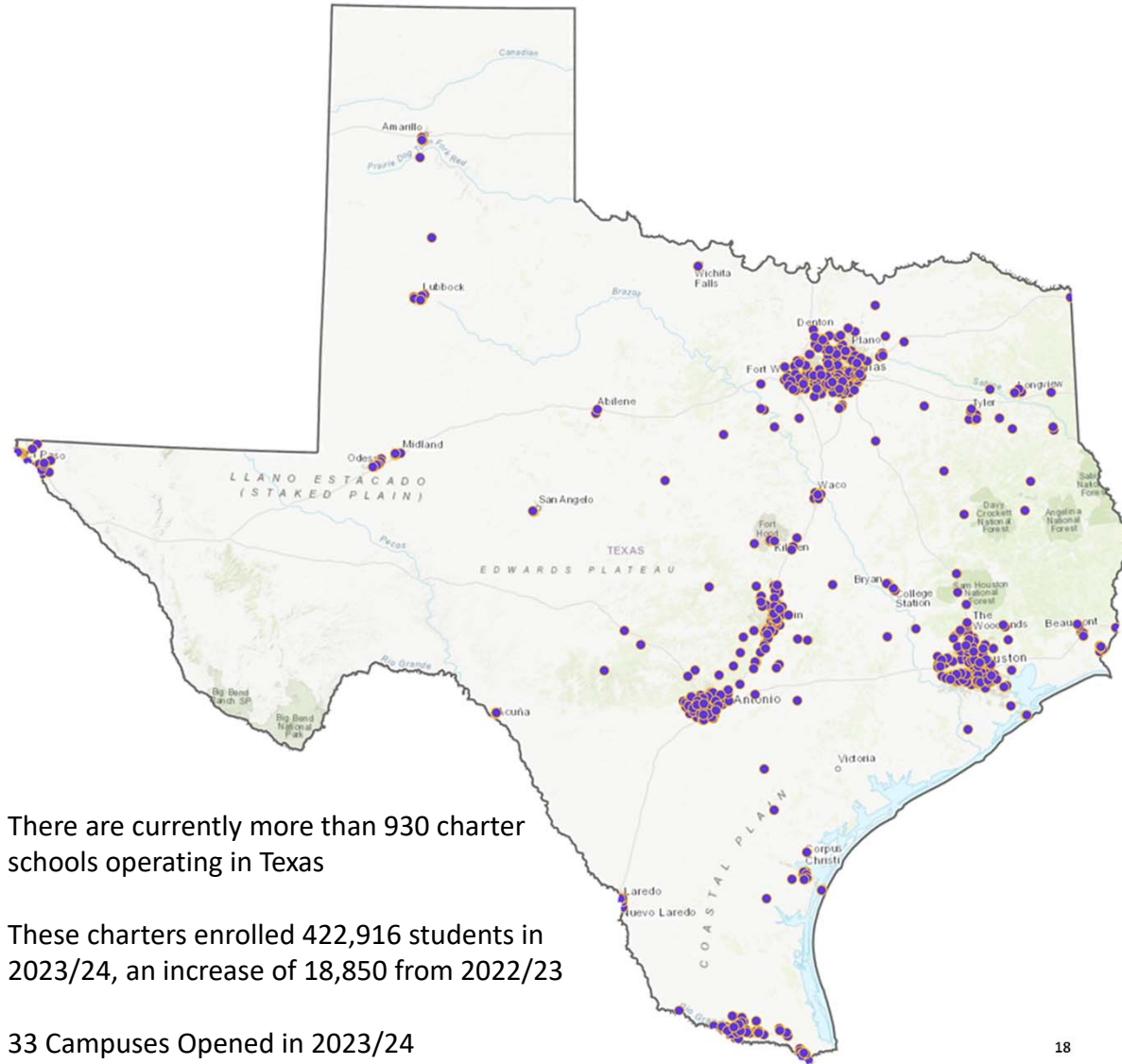
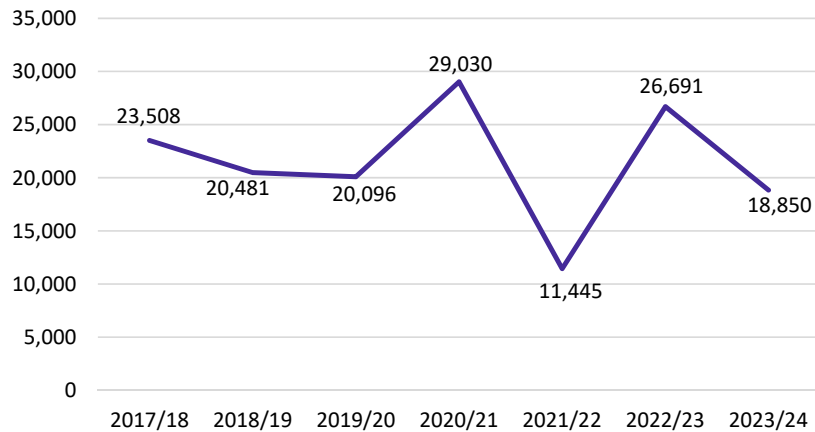
\* Totals include additional districts due to TEA rounding rules

# Charter Schools

**Total Charter Enrollment**



**Charter Enrollment Change**



- There are currently more than 930 charter schools operating in Texas
- These charters enrolled 422,916 students in 2023/24, an increase of 18,850 from 2022/23
- 33 Campuses Opened in 2023/24



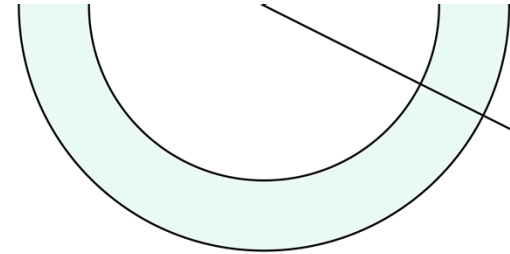
# Ten Year Forecast by Grade Level

Year (OCT)	K	1st	2nd	3rd	4th	5th	6th	7th	8th	9th	10th	11th	12th	Totals	Total Growth	% Growth
2019/20	3,538	3,412	3,497	3,495	3,576	3,806	3,875	3,933	3,982	4,456	4,317	4,258	4,156	52,189		
2020/21	2,939	3,345	3,227	3,332	3,422	3,474	3,732	3,850	3,943	4,252	4,353	4,178	4,204	49,410	-2,779	-5.3%
2021/22	3,148	3,219	3,357	3,321	3,343	3,422	3,591	3,764	3,905	4,311	4,183	4,156	4,122	49,081	-329	-0.7%
2022/23	3,106	3,295	3,306	3,419	3,414	3,386	3,569	3,650	3,804	4,224	4,117	4,002	4,013	48,688	-393	-0.8%
2023/24	3,070	3,225	3,337	3,347	3,528	3,390	3,440	3,621	3,688	4,085	4,139	4,044	4,067	48,356	-332	-0.7%
2024/25	3,053	3,164	3,255	3,367	3,388	3,537	3,439	3,480	3,658	3,968	4,002	4,018	3,990	47,622	-735	-1.5%
2025/26	3,000	3,183	3,194	3,291	3,418	3,413	3,585	3,471	3,522	3,961	3,860	3,893	3,967	47,034	-587	-1.2%
2026/27	3,041	3,113	3,201	3,218	3,322	3,414	3,466	3,641	3,507	3,814	3,845	3,768	3,851	46,482	-553	-1.2%
2027/28	3,129	3,147	3,130	3,226	3,239	3,330	3,464	3,504	3,690	3,789	3,711	3,740	3,713	46,132	-350	-0.8%
2028/29	3,059	3,242	3,168	3,150	3,251	3,235	3,375	3,506	3,544	3,992	3,685	3,618	3,688	45,808	-324	-0.7%
2029/30	3,110	3,165	3,262	3,184	3,169	3,257	3,281	3,421	3,546	3,824	3,878	3,588	3,572	45,564	-244	-0.5%
2030/31	3,087	3,217	3,180	3,285	3,201	3,170	3,311	3,323	3,461	3,823	3,712	3,777	3,539	45,388	-175	-0.4%
2031/32	3,011	3,194	3,237	3,202	3,305	3,201	3,226	3,354	3,366	3,735	3,713	3,615	3,726	45,157	-231	-0.5%
2032/33	2,982	3,118	3,211	3,257	3,220	3,311	3,247	3,267	3,396	3,638	3,625	3,617	3,568	44,719	-438	-1.0%
2033/34	2,948	3,086	3,134	3,234	3,276	3,224	3,359	3,288	3,308	3,664	3,526	3,530	3,568	44,394	-325	-0.7%

Yellow box = largest grade per year  
 Green box = second largest grade per year



# Ten Year Forecast by Elementary Campus

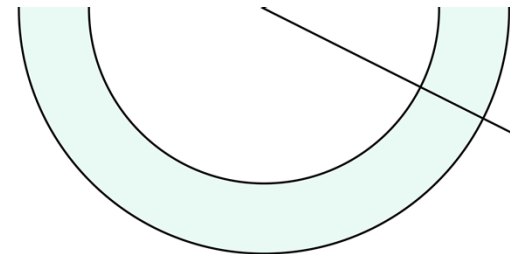


CAMPUS	2020 Maximum Capacity	ENROLLMENT PROJECTIONS											
		2022/23	Fall 2023/24	2024/25	2025/26	2026/27	2027/28	2028/29	2029/30	2030/31	2031/32	2032/33	2033/34
BLUEBONNET ELEMENTARY	770	636	673	699	694	705	704	693	676	672	672	680	689
BRIDLEWOOD ELEMENTARY	880	570	586	591	568	543	531	505	504	506	509	517	517
CAMEY ELEMENTARY	770	489	439	425	396	379	376	353	361	360	361	358	344
CASTLE HILLS ELEMENTARY	748	705	654	619	579	570	546	540	545	542	544	538	523
CENTRAL ELEMENTARY	836	520	543	525	506	508	511	524	521	524	520	509	494
COYOTE RIDGE ELEMENTARY	814	532	518	510	488	471	457	455	453	449	452	455	457
CREEKSIDE ELEMENTARY	660	422	383	373	342	345	343	343	351	355	357	354	345
DEGAN ELEMENTARY	726	443	402	398	389	380	400	394	404	410	408	405	395
DONALD ELEMENTARY	880	567	571	565	562	550	562	561	555	554	549	546	541
ETHRIDGE ELEMENTARY	506	359	343	332	331	315	318	316	331	336	340	340	330
FLOWER MOUND ELEMENTARY	726	578	569	579	556	525	503	496	498	498	505	514	518
FOREST VISTA ELEMENTARY	968	573	566	570	569	563	563	550	559	563	561	557	542
GARDEN RIDGE ELEMENTARY	594	378	346	337	324	312	305	314	320	321	324	321	312
HEBRON VALLEY ELEMENTARY	836	411	405	377	380	380	389	398	409	415	415	412	400
HERITAGE ELEMENTARY	1,012	509	504	513	514	520	523	534	548	549	538	529	517
HICKS ELEMENTARY	792	618	593	574	550	530	548	551	567	577	578	575	559
HIGHLAND VILLAGE ELEMENTARY	572	360	373	372	374	378	372	373	367	358	349	343	333
HOMESTEAD ELEMENTARY	726	455	458	434	420	415	403	395	404	409	416	417	411
INDEPENDENCE ELEMENTARY	990	798	823	775	785	792	790	767	777	785	784	786	788
INDIAN CREEK ELEMENTARY	748	534	540	510	518	511	509	502	500	497	493	488	484
JACKSON EARLY ED. CENTER	900	469	439	439	439	439	439	439	439	439	439	439	439
LAKELAND ELEMENTARY	1,034	614	649	608	584	575	560	562	567	565	572	571	565
LEWISVILLE ELEMENTARY	858	508	491	493	478	478	459	459	464	466	471	470	464
LIBERTY ELEMENTARY	990	587	583	580	552	535	551	528	538	537	527	523	513
LLC ELEMENTARY SCHOOL		16	11	11	11	11	11	11	11	11	11	11	11
MCAULIFFE ELEMENTARY	616	539	524	511	501	498	481	472	471	465	468	465	463
MEMORIAL ELEMENTARY	968	630	730	842	934	972	1,028	1,057	1,039	1,030	1,032	1,050	1,070
MILL ST. ELEMENTARY	880	610	630	641	642	631	631	620	616	607	606	604	602
MORNINGSIDE ELEMENTARY	550	363	345	339	340	330	326	327	328	328	335	336	333
OLD SETTLERS ELEMENTARY	990	477	468	453	442	436	428	441	439	437	440	446	449
OWEN ELEMENTARY	770	263	262	255	260	258	254	251	266	276	280	285	290
PARKWAY ELEMENTARY	748	552	605	609	622	615	606	598	591	586	577	580	581
PETERS COLONY ELEMENTARY	814	533	559	533	530	533	543	553	551	553	547	539	523
POLSER ELEMENTARY	792	476	500	499	526	537	548	551	550	547	533	520	504
PRAIRIE TRAIL ELEMENTARY	968	643	652	648	648	657	644	640	640	638	637	629	619
ROCKBROOK ELEMENTARY	990	646	592	581	552	549	560	545	558	567	570	560	546
SOUTHBRIDGE ELEMENTARY	704	623	613	621	614	607	579	577	575	569	572	567	568
TIMBER CREEK ELEMENTARY	572	430	437	433	424	417	415	420	421	421	420	415	405
VALLEY RIDGE ELEMENTARY	946	523	548	568	555	560	564	571	550	542	542	543	545
VICKERY ELEMENTARY	946	621	624	623	597	592	596	591	574	563	559	557	554
WELLINGTON ELEMENTARY	1,012	729	721	701	679	665	646	624	618	615	608	609	608
<b>ELEMENTARY TOTALS</b>	<b>32,602</b>	<b>21,309</b>	<b>21,272</b>	<b>21,067</b>	<b>20,776</b>	<b>20,589</b>	<b>20,521</b>	<b>20,400</b>	<b>20,453</b>	<b>20,442</b>	<b>20,422</b>	<b>20,361</b>	<b>20,152</b>
Elementary Total Change		260	-37	-205	-291	-186	-68	-121	53	-11	-20	-61	-210
Elementary Percent Change		1.24%	-0.17%	-0.97%	-1.38%	-0.90%	-0.33%	-0.59%	0.26%	-0.06%	-0.10%	-0.30%	-1.03%





# Ten Year Forecast by Secondary Campus

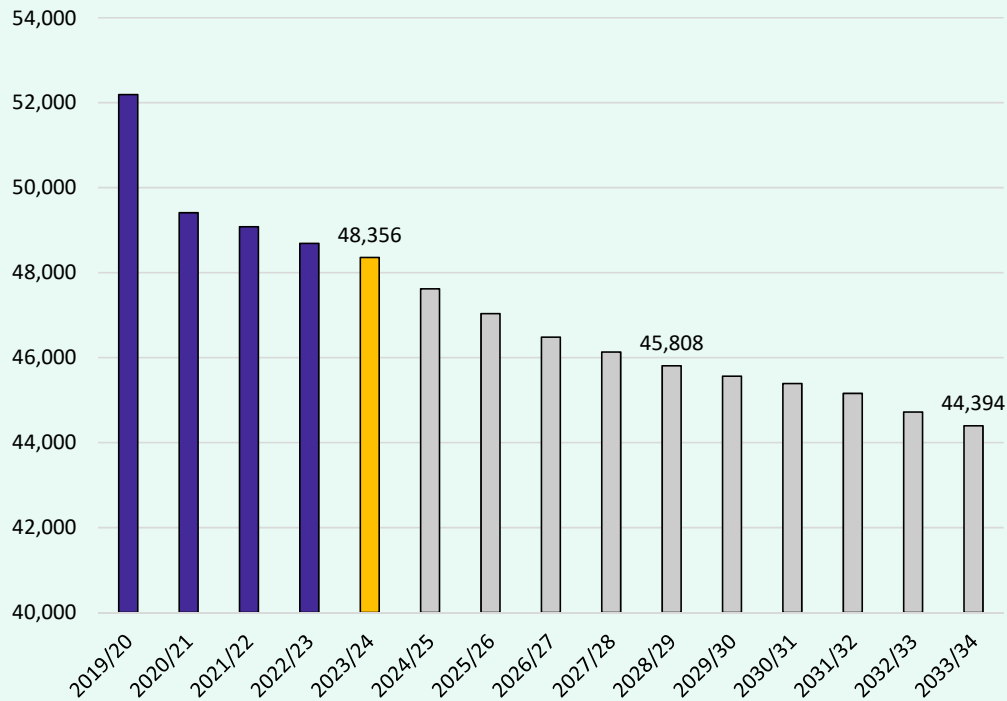


CAMPUS	2020 Maximum Capacity	ENROLLMENT PROJECTIONS											
		2022/23	Fall 2023/24	2024/25	2025/26	2026/27	2027/28	2028/29	2029/30	2030/31	2031/32	2032/33	2033/34
ARBOR CREEK MIDDLE SCHOOL	1,050	890	894	917	908	949	903	889	843	835	815	829	844
BRIARHILL MIDDLE SCHOOL	1,150	798	794	775	771	747	737	703	696	680	697	704	696
CREEK VALLEY MIDDLE SCHOOL	1,100	593	564	574	563	553	538	525	520	519	533	539	554
DELAY MIDDLE SCHOOL	1,300	694	627	592	611	606	624	593	589	567	563	561	566
DOWNING MIDDLE SCHOOL	1,100	511	503	521	555	584	621	608	564	533	489	487	489
DURHAM MIDDLE SCHOOL	1,100	716	647	611	628	622	649	639	620	586	554	571	578
FORESTWOOD MIDDLE SCHOOL	1,400	890	919	906	890	883	888	868	832	815	801	806	822
GRIFFIN MIDDLE SCHOOL	1,250	756	721	715	739	804	824	853	890	941	971	956	958
HEDRICK MIDDLE SCHOOL	1,225	852	871	876	845	847	843	814	821	846	844	810	786
HUFFINES MIDDLE SCHOOL	1,050	675	617	614	624	617	603	570	571	572	576	563	567
KILLIAN MIDDLE SCHOOL	1,425	1,009	945	949	942	914	909	883	857	813	777	788	795
LAKEVIEW MIDDLE SCHOOL	990	425	419	412	396	405	394	423	403	410	394	400	408
LAMAR MIDDLE SCHOOL	1,075	756	728	683	670	679	713	695	684	648	635	634	641
MCKAMY MIDDLE SCHOOL	1,150	802	825	776	759	758	740	723	701	687	654	648	649
SHADOW RIDGE MIDDLE SCHOOL	1,000	647	642	623	644	613	639	606	624	610	610	581	569
LLC MIDDLE SCHOOL		9	33	33	33	33	33	33	33	33	33	33	33
<b>MIDDLE SCHOOL TOTALS</b>	<b>17,365</b>	<b>11,023</b>	<b>10,749</b>	<b>10,577</b>	<b>10,578</b>	<b>10,614</b>	<b>10,658</b>	<b>10,425</b>	<b>10,248</b>	<b>10,095</b>	<b>9,946</b>	<b>9,910</b>	<b>9,955</b>
Middle School Total Change		-237	-274	-172	1	36	44	-233	-177	-153	-149	-36	45
Middle School Percent Change		-2.10%	-2.49%	-1.60%	0.01%	0.34%	0.41%	-2.19%	-1.70%	-1.49%	-1.48%	-0.36%	0.45%
FLOWER MOUND 9th GRADE CAMPUS	783	853	808	861	853	845	778	854	793	785	779	748	729
HEBRON 9th GRADE CAMPUS	1,512	934	878	840	866	796	877	838	797	801	780	717	746
MARCUS 9th GRADE CAMPUS	837	740	728	736	719	692	679	745	702	739	675	633	653
FLOWER MOUND HIGH SCHOOL	3,780	2,681	2,633	2,513	2,497	2,485	2,516	2,432	2,435	2,383	2,390	2,316	2,272
HEBRON HIGH SCHOOL	3,564	2,739	2,796	2,771	2,663	2,633	2,535	2,574	2,550	2,545	2,473	2,417	2,335
LEWISVILLE HIGH SCHOOL	2,862	1,988	1,963	2,012	2,007	1,863	1,784	1,754	1,682	1,737	1,749	1,682	1,659
LEWISVILLE BEN HARMON HS	1,458	1,200	1,173	1,126	1,143	1,108	1,051	1,096	1,106	1,075	1,074	1,041	1,030
LEWISVILLE KILLOUGH	1,122	1,061	1,023	930	823	822	802	822	820	778	751	763	778
MARCUS HIGH SCHOOL	3,645	2,256	2,276	2,237	2,236	2,194	2,148	2,094	2,121	2,129	2,189	2,120	2,052
THE COLONY HIGH SCHOOL	3,321	1,892	1,882	1,775	1,699	1,665	1,608	1,599	1,681	1,704	1,754	1,836	1,859
LLC HIGH SCHOOL		12	175	175	175	175	175	175	175	175	175	175	175
<b>HIGH SCHOOL TOTALS</b>	<b>22,884</b>	<b>16,356</b>	<b>16,335</b>	<b>15,976</b>	<b>15,681</b>	<b>15,278</b>	<b>14,953</b>	<b>14,983</b>	<b>14,862</b>	<b>14,851</b>	<b>14,789</b>	<b>14,448</b>	<b>14,288</b>
High School Total Change		-416	-21	-359	-295	-403	-326	30	-121	-11	-62	-341	-160
High School Percent Change		-2.48%	-0.13%	-2.20%	-1.85%	-2.57%	-2.13%	0.20%	-0.81%	-0.07%	-0.42%	-2.31%	-1.11%
<b>DISTRICT TOTALS</b>	<b>72,851</b>	<b>48,688</b>	<b>48,356</b>	<b>47,620</b>	<b>47,034</b>	<b>46,482</b>	<b>46,132</b>	<b>45,808</b>	<b>45,564</b>	<b>45,388</b>	<b>45,157</b>	<b>44,719</b>	<b>44,394</b>
District Total Change		-393	-332	-737	-585	-553	-350	-324	-244	-175	-231	-438	-325
District Percent Change		-0.80%	-0.68%	-1.52%	-1.23%	-1.18%	-0.75%	-0.70%	-0.53%	-0.38%	-0.51%	-0.97%	-0.73%



## Key Takeaways

Enrollment Forecast



- LISD enrollment has declined 7% over the last 5 years, and 1% since last year
- Annual new home starts in DFW are rebounding, increasing 12% from this time last year, and 8% over last quarter
- LISD has more than 350 homes currently in inventory with more than 570 additional lots available to build on
- Groundwork is underway on nearly 600 lots within 7 subdivisions
- Outgoing Transfers have declined for the second year in a row
- Lewisville ISD enrollment will continue to decline as exiting senior classes remain much larger than incoming kindergarten classes