

# Housing Analysis

Prepared for Lewisville ISD  
By Zonda Education



Dallas/Ft. Worth

1Q23

# Table of Contents

Area of Interest (Map)

Current Activity and Profile

Quarterly Activity and Inventory

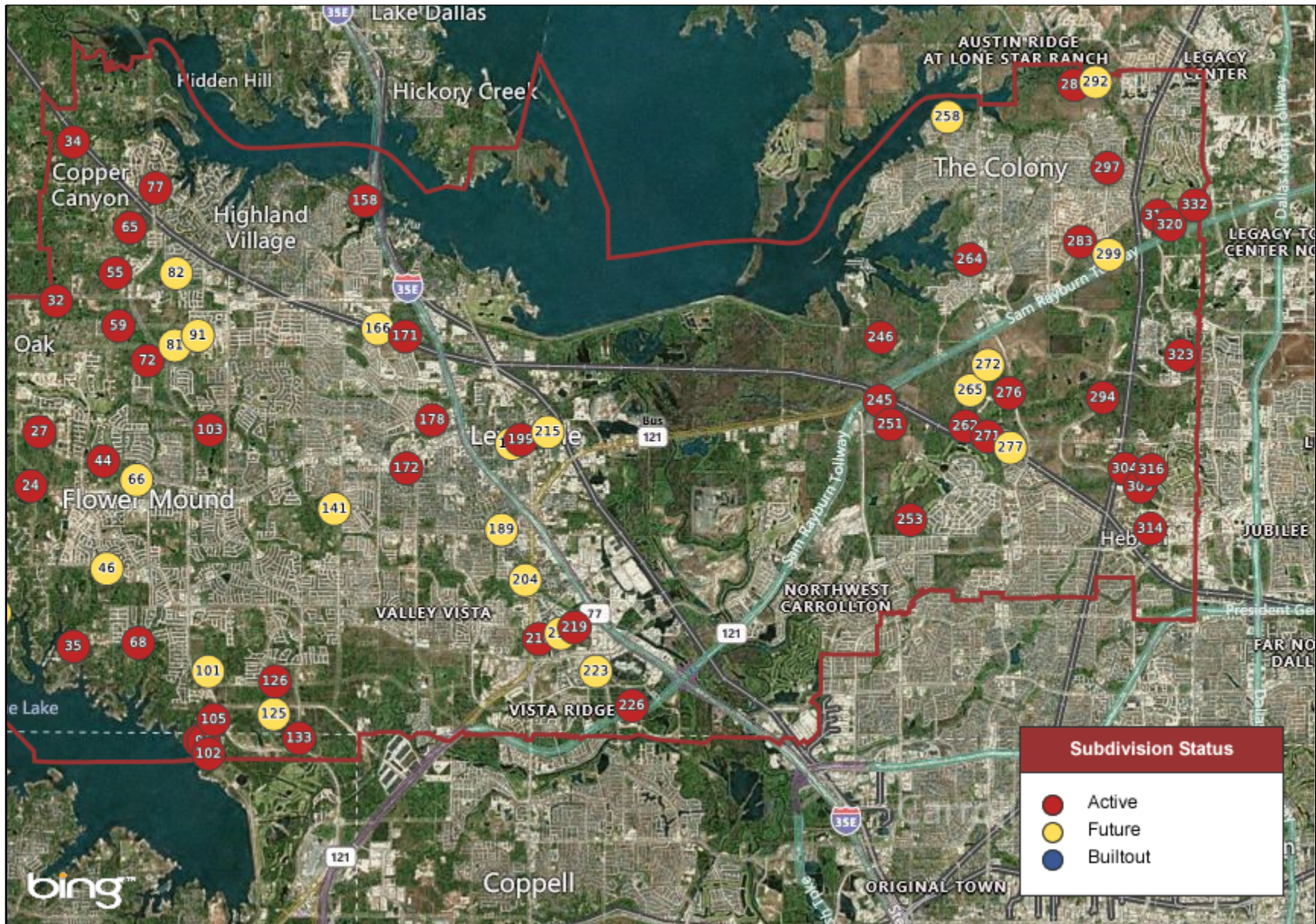
Historical Housing Activity

Price Range Analysis

Household Growth Summary

# Area of Interest

## Lewisville ISD





# Current Activity and Profile Report

## Lewisville ISD

Sorted by Subdivision

Map No	Subdivision Name	Sub Area	Status	Lot Size	Price Range	Qtr Starts	Ann Starts	Qtr Clos	Ann Clos	Occ	Inventory			VDL	Future	Total
											Mod	Fin Vac	U/C			
294	Austin Waters (Carrollton)	DNW-Carrltn	Act 2Q07	53'	\$430-\$465	0	0	0	0	216	0	0	0	1	0	217
72	Bradford Park (Flower Mound)	DNW-FlwrMnd	Act 1Q19	50'-75'	\$634-\$897	4	24	13	52	144	1	0	11	0	0	156
297	Brentwood Court Townhomes	DNW-Colony	Act 1Q20	24'	\$410-\$439	3	11	6	11	21	0	0	0	22	0	43
283	Camey Place	DNW-Colony	Act 3Q22	45'	\$564-\$704	15	23	0	0	0	1	6	16	57	0	80
253	Castle Hills (Lewisville)	DNW-Lewisvl	Act 2Q98	134'	\$435-\$2000	0	12	0	21	3,860	0	0	15	29	0	3,904
271	Castle Hills/Carrollton 10	DNW-Carrltn	Act 4Q20	41'-80'	\$448-\$931	18	65	14	191	252	0	2	26	3	0	283
265	Castle Hills/Discover Cottages	DNW-Lewisvl	Future	37'	\$0-\$0	0	0	0	0	0	0	0	0	0	57	57
262	Castle Hills/Northpointe	DNW-Lewisvl	Act 3Q19	41'-80'	\$555-\$816	35	56	17	26	124	2	3	33	95	10	267
272	Castle Hills/Windhaven	DNW-Lewisvl	Future	35'	\$0-\$0	0	0	0	0	0	0	0	0	0	86	86
309	Charles Ridge	DNW-Carrltn	Act 1Q23	24'	\$400-\$550	0	0	0	0	0	0	0	0	24	0	24
10	Chateau du Lac	DNW-FlwrMnd	Act 3Q00	187'-240'	\$1250-\$3000	1	2	0	3	54	0	0	2	5	0	61
158	Copperas Branch Addition	DNW-HighVil	Act 3Q03	80'	\$300-\$450	0	0	0	0	2	0	0	0	9	0	11
91	Dixon Estates	DNW-FlwrMnd	Future	94'	\$0-\$0	0	0	0	0	0	0	0	0	0	51	51
141	Emerald Place	DNW-FlwrMnd	Future	80'	\$0-\$0	0	0	0	0	0	0	0	0	0	54	54
17	Estuary Pointe	DNW-FlwrMnd	Future	150'	\$0-\$0	0	0	0	0	0	0	0	0	0	27	27
320	Frisco 45 Townhomes	DNE-Frisco	Act 4Q22	19'	\$400-\$500	0	0	0	0	0	0	0	0	29	0	29
258	Garza Lake Estates (The	DNW-Colony	Future	55'	\$0-\$0	0	0	0	0	0	0	0	0	0	4	4
316	Gates of Prestonwood	DNW-Carrltn	Act 4Q02	80'	\$600-\$1000	0	0	0	0	61	0	0	0	1	0	62
44	Grace Park	DNW-FlwrMnd	Act 1Q23	87'-100'	\$350-\$450	0	0	0	0	0	0	0	0	20	0	20
166	Great Lakes Crossing	DNW-Lewisvl	Future	50'	\$0-\$0	0	0	0	0	0	0	0	0	0	30	30
172	Greenvalley Addition	DNW-Lewisvl	Act 4Q20	20'	\$300-\$400	0	0	0	0	6	0	0	0	4	0	10
171	Heritage Trails Addition	DNW-Lewisvl	Act 1Q21	24'-32'	\$400-\$474	0	110	55	159	220	7	22	0	0	0	249
126	Heritage West	DNW-FlwrMnd	Act 4Q21	70'	\$1000-\$1200	1	22	21	28	28	0	0	2	0	0	30
34	Hidden Creek Estates (Copper	DNW-CCanyon	Act 2Q08	250'	\$850-\$1000	0	3	3	3	10	0	0	0	3	0	13
77	Highland Shores	DNW-HighVil	Act 2Q84	60'-110'	\$235-\$750	0	2	0	1	1,833	0	0	2	1	0	1,836
5	Hillside of Flower Mound	DNW-FlwrMnd	Act 2Q18	110'	\$700-\$1200	2	12	2	8	15	0	0	6	6	0	27

# Current Activity and Profile Report

## Lewisville ISD

Sorted by Subdivision

Map No	Subdivision Name	Sub Area	Status	Lot Size	Price Range	Qtr Starts	Ann Starts	Qtr Clos	Ann Clos	Occ	Inventory			VDL	Future	Total
											Mod	Fin Vac	U/C			
304	Kensington Place	DNW-Carrltn	Act 4Q21	50'-70'	\$632-\$1028	11	78	18	24	24	3	17	35	17	0	96
323	Kings Gate (Plano)	DNE-Plano	Act 1Q96	162'	\$1900-\$6500	0	0	0	0	43	0	0	3	3	0	49
246	Lakeridge Townhomes	DNW-Lewisvl	Act 2Q06	22'	\$256-\$270	0	0	0	0	131	0	0	0	1	0	132
105	Lakeside Crossing Townhomes	DNW-FlwrMnd	Act 3Q20	32'	\$660-\$765	0	6	1	5	10	0	0	5	0	0	15
92	Lakeside Tower	DNW-FlwrMnd	Act 2Q19		\$1152-\$3854	0	0	0	3	47	0	1	0	0	0	48
102	Lakeside Village	DNW-FlwrMnd	Act 4Q21	40'	\$1000-\$1250	2	2	0	0	0	0	0	2	55	0	57
96	Lakeside Villas	DNW-FlwrMnd	Act 1Q22	35'	\$650-\$750	0	7	0	0	0	0	0	7	0	0	7
125	Lakewood (Flower Mound)	DNW-FlwrMnd	Future	31'-50'	\$0-\$0	0	0	0	0	0	0	0	0	0	164	164
276	Lakewood Hills Addition	DNW-Lewisvl	Act 4Q17	50'-80'	\$550-\$825	75	156	50	125	382	3	13	93	20	0	511
192	Larry Ho Addition	DNW-Lewisvl	Future	21'	\$0-\$0	0	0	0	0	0	0	0	0	0	4	4
59	Legends, The (Flower Mound)	DNW-FlwrMnd	Act 1Q15	50'	\$418-\$445	0	0	0	0	90	0	0	0	1	0	91
210	Manors at Forestbrook Addition	DNW-Lewisvl	Act 4Q18	26'	\$335-\$390	0	21	19	23	61	4	0	21	25	0	111
178	Normandy Village	DNW-Lewisvl	Act 4Q19	25'	\$509-\$527	0	41	12	18	34	1	0	47	0	0	82
219	Oakbend Estates (Lewisville)	DNW-Lewisvl	Act 1Q21	30'	\$450-\$550	0	7	0	10	15	0	0	6	6	0	27
101	Oakbridge Crossing	DNW-FlwrMnd	Future	80'	\$0-\$0	0	0	0	0	0	0	0	0	0	127	127
277	Parker Crossing	DNW-Carrltn	Future	41'	\$0-\$0	0	0	0	0	0	0	0	0	0	61	61
251	Parker Place (Lewisville)	DNW-Lewisvl	Act 4Q21	40'	\$645-\$726	16	42	16	17	17	2	3	22	86	0	130
218	Parks at Uecker Addition TH ,	DNW-Lewisvl	Future	40'	\$0-\$0	0	0	0	0	0	0	0	0	0	36	36
46	Red Hawk Addition	DNW-FlwrMnd	Future	40'	\$0-\$0	0	0	0	0	0	0	0	0	0	4	4
65	Reserve at Chapel Hill	DNW-HighVil	Act 2Q21	65'-89'	\$717-\$812	5	21	12	46	53	1	0	15	3	0	72
103	River Walk/Lakeshore Terrace	DNW-FlwrMnd	Act 1Q18	22'-40'	\$489-\$650	4	4	8	15	35	0	0	4	44	0	83
292	Rock Creek Townhomes	DNE-Frisco	Future	25'	\$0-\$0	0	0	0	0	0	0	0	0	0	92	92
27	Saddlewood (Flower Mound)	DNW-FlwrMnd	Act 4Q15	120'	\$989-\$1046	0	0	0	2	46	0	0	1	2	0	49
3	Serenity (Flower Mound)	DNW-FlwrMnd	Future	80'	\$0-\$0	0	0	0	0	0	0	0	0	0	18	18
199	South Village Addition	DNW-Lewisvl	Act 4Q17	44'	\$329-\$380	0	5	0	2	58	0	0	4	1	0	63
223	Spectra Heights Addition	DNW-Lewisvl	Future	24'	\$0-\$0	0	0	0	0	0	0	0	0	0	18	18

# Current Activity and Profile Report

## Lewisville ISD

Sorted by Subdivision

Map No	Subdivision Name	Sub Area	Status	Lot Size	Price Range	Qtr Starts	Ann Starts	Qtr Clos	Ann Clos	Occ	Inventory			VDL	Future	Total
											Mod	Fin Vac	U/C			
317	Stonebriar Country Club Est.	DNE-Frisco	Act 2Q01	90'	\$849-\$1900	0	0	0	0	91	0	0	0	4	0	95
35	Sunset Point at Twin Coves	DNW-FlwrMnd	Act 4Q21	80'	\$1100-\$1300	0	9	10	10	10	0	1	0	7	0	18
55	Terracina (Flower Mound)	DNW-FlwrMnd	Act 3Q12	100'	\$695-\$771	0	0	0	1	167	0	0	0	1	0	168
332	The Corvalla at Stonebriar	DNE-Frisco	Act 1Q18		\$525-\$2000	0	0	1	2	48	0	21	0	0	52	121
281	The Hills of Kingswood	DNE-Frisco	Act 1Q09	65'-150'	\$1460-\$4500	9	35	10	38	300	0	2	38	40	232	612
68	Three Bridges Estates	DNW-FlwrMnd	Act 2Q05	258'	\$800-\$1000	0	0	0	0	14	0	0	0	2	0	16
204	Timber Creek Willows	DNW-Lewisvl	Future	25'	\$0-\$0	0	0	0	0	0	0	0	0	0	31	31
24	Town Lake at Flower Mound	DNW-FlwrMnd	Act 1Q17	100'-120'	\$1518-\$1627	1	28	7	30	134	1	1	21	4	67	228
66	Traditions of Flower Mound	DNW-FlwrMnd	Future	107'	\$0-\$0	0	0	0	0	0	0	0	0	0	9	9
215	Trinity Townhomes (Lewisville)	DNW-Lewisvl	Future	17'	\$0-\$0	0	0	0	0	0	0	0	0	0	8	8
32	Vickery	DNW-CCanyon	Act 1Q21	62'-100'	\$740-\$1254	6	58	9	64	65	3	0	52	105	0	225
299	Village Townhomes	DNW-Colony	Future	30'	\$0-\$0	0	0	0	0	0	0	0	0	0	74	74
133	Villas at Southgate Townhomes	DNW-FlwrMnd	Act 3Q18	22'	\$445-\$566	0	39	0	30	165	1	0	50	8	0	224
189	Villas of Bellaire Addition	DNW-Lewisvl	Future	26'	\$0-\$0	0	0	0	0	0	0	0	0	0	102	102
314	Villas of Prestonwood	DNW-Carrltn	Act 1Q17	28'	\$451-\$530	0	18	16	44	193	0	1	0	0	0	194
226	Vista del Lago Addition TH	DNW-Lewisvl	Act 3Q19	22'	\$416-\$491	0	30	0	44	119	1	0	28	0	0	148
264	Westport Lakeview Villas	DNW-Colony	Act 1Q19	25'	\$970-\$980	0	3	0	4	23	0	0	10	0	0	33
82	Whitestone Village (Highland)	DNW-HighVil	Future	30'	\$0-\$0	0	0	0	0	0	0	0	0	0	60	60
81	Whyburn	DNW-FlwrMnd	Future	80'	\$0-\$0	0	0	0	0	0	0	0	0	0	105	105
245	Windhaven Crossing	DNW-Lewisvl	Act 1Q17	22'	\$506-\$537	27	66	16	25	285	1	9	60	8	0	363
<b>Selection Totals</b>						235	1018	336	1,085	9,506	32	102	637	752	1,583	12,612

# Quarterly Activity & Inventory Report

## Lewisville ISD

Sorted By Subdivision

Subdivision Name (Map No)	Sub Area	Price Range	Lot Size	Status	1Q21	2Q21	3Q21	4Q21	1Q22	2Q22	3Q22	4Q22	1Q23	Ann. Rates/ *Inv. Supply
<b>Austin Waters (Carro (294))</b>	DNW-Carrlltn	\$430-\$465	53'	Starts	0	0	0	0	0	0	0	0	0	0
	Act 2Q07			Closings	0	0	0	0	0	0	0	0	0	0
<i>Darling Homes</i>				Housing Inv	0	0	0	0	0	0	0	0	0	0.0
				VDL Inv	1	1	1	1	1	1	1	1	1	n/a
<b>Bradford Park (Flowe (72))</b>	DNW-FlwrMnd	\$634-\$897	50'-75'	Starts	15	7	11	12	13	9	3	8	4	24
	Act 1Q19			Closings	8	5	10	7	2	16	10	13	13	52
<i>Lennar Homes/Village Builders Inc</i>				Housing Inv	21	23	24	29	40	33	26	21	12	2.8 mos
				VDL Inv	68	60	49	37	24	15	12	4	0	0.0
<b>Brentwood Court Town (297)</b>	DNW-Colony	\$410-\$439	24'	Starts	0	0	5	0	0	0	8	0	3	11
	Act 1Q20			Closings	1	0	0	5	0	0	5	0	6	11
<i>Havendale Homes</i>				Housing Inv	0	0	5	0	0	0	3	3	0	0.0
				VDL Inv	38	38	33	33	33	33	25	25	22	24.0 mos
<b>Camey Place (283)</b>	DNW-Colony	\$564-\$704	45'	Starts	0	0	0	0	0	0	0	8	15	23
	Act 3Q22			Closings	0	0	0	0	0	0	0	0	0	0
<i>David Weekley Homes</i>				Housing Inv	0	0	0	0	0	0	0	8	23	n/a
				VDL Inv	0	0	0	0	0	0	80	72	57	29.7 mos
<b>Castle Hills (Lewisv (253))</b>	DNW-Lewisvl	\$435-\$2000	134'	Starts	1	8	12	1	2	1	4	7	0	12
	Act 2Q98			Closings	2	0	1	0	1	12	9	0	0	21
<i>Bella Custom Builder/Bella Vita CH/Calais Custom Homes/Custom Homes of Texas/DW Homes/Holmes Builders/Malone Custom Builders/Ron Davis CH/Victor Myers Custom Homes</i>				Housing Inv	3	11	22	23	24	13	8	15	15	8.6 mos
				VDL Inv	48	57	45	44	42	42	36	29	29	29.0 mos
<b>Castle Hills/Carroll (271)</b>	DNW-Carrlltn	\$448-\$931	41'-80'	Starts	1	27	104	41	42	15	23	9	18	65
	Act 4Q20			Closings	0	0	2	15	44	61	76	40	14	191
<i>American Legend Homes/Shaddock Homes</i>				Housing Inv	1	28	130	156	154	108	55	24	28	1.8 mos
				VDL Inv	209	279	152	111	69	54	30	21	3	0.6 mos
<b>Castle Hills/Discover (265)</b>	DNW-Lewisvl	\$0-\$0	37'	Starts	0	0	0	0	0	0	0	0	0	0
	Future			Closings	0	0	0	0	0	0	0	0	0	0
				Housing Inv	0	0	0	0	0	0	0	0	0	0.0
				VDL Inv	0	0	0	0	0	0	0	0	0	0.0
<b>Castle Hills/Northpo (262)</b>	DNW-Lewisvl	\$555-\$816	41'-80'	Starts	3	3	2	0	2	0	21	0	35	56
	Act 3Q19			Closings	12	8	4	2	0	2	3	4	17	26
<i>American Legend Homes</i>				Housing Inv	15	10	8	6	8	6	24	20	38	17.5 mos
				VDL Inv	164	162	159	163	161	151	130	130	95	20.4 mos
<b>Castle Hills/Windhav (272)</b>	DNW-Lewisvl	\$0-\$0	35'	Starts	0	0	0	0	0	0	0	0	0	0
	Future			Closings	0	0	0	0	0	0	0	0	0	0
				Housing Inv	0	0	0	0	0	0	0	0	0	0.0
				VDL Inv	0	0	0	0	0	0	0	0	0	0.0
<b>Charles Ridge (309)</b>	DNW-Carrlltn	\$400-\$550	24'	Starts	0	0	0	0	0	0	0	0	0	0
	Act 1Q23			Closings	0	0	0	0	0	0	0	0	0	0
<i>Surani Homes</i>				Housing Inv	0	0	0	0	0	0	0	0	0	0.0
				VDL Inv	0	0	0	0	0	0	0	0	24	n/a

# Quarterly Activity & Inventory Report

## Lewisville ISD

Sorted By Subdivision

Subdivision Name (Map No)	Sub Area	Price Range	Lot Size	Status	1Q21	2Q21	3Q21	4Q21	1Q22	2Q22	3Q22	4Q22	1Q23	Ann. Rates/ *Inv. Supply	
<b>Chateau du Lac (10)</b> \$1250-\$3000 187'-240' Calais Custom Homes/Malone Custom Builders	DNW-FlwrMnd Act 3Q00	Starts			1	0	0	0	1	0	0	1	1	2	
		Closings			0	1	0	0	0	1	2	0	0	3	
		Housing Inv			3	2	2	2	3	2	0	1	2	2	8.0 mos
		VDL Inv			8	8	8	8	7	7	7	6	5	5	30.0 mos
<b>Copperas Branch Addi (158)</b> \$300-\$450 80' Pyland Custom Homes	DNW-HighVil Act 3Q03	Starts			0	0	0	0	0	0	0	0	0	0	
		Closings			0	0	0	0	0	0	0	0	0	0	0
		Housing Inv			0	0	0	0	0	0	0	0	0	0	0.0
		VDL Inv			9	9	9	9	9	9	9	9	9	9	n/a
<b>Dixon Estates (91)</b> \$0-\$0 94'	DNW-FlwrMnd Future	Starts			0	0	0	0	0	0	0	0	0	0	
		Closings			0	0	0	0	0	0	0	0	0	0	0
		Housing Inv			0	0	0	0	0	0	0	0	0	0	0.0
		VDL Inv			0	0	0	0	0	0	0	0	0	0	0.0
<b>Emerald Place (141)</b> \$0-\$0 80'	DNW-FlwrMnd Future	Starts			0	0	0	0	0	0	0	0	0	0	
		Closings			0	0	0	0	0	0	0	0	0	0	0
		Housing Inv			0	0	0	0	0	0	0	0	0	0	0.0
		VDL Inv			0	0	0	0	0	0	0	0	0	0	0.0
<b>Estuary Pointe (17)</b> \$0-\$0 150'	DNW-FlwrMnd Future	Starts			0	0	0	0	0	0	0	0	0	0	
		Closings			0	0	0	0	0	0	0	0	0	0	0
		Housing Inv			0	0	0	0	0	0	0	0	0	0	0.0
		VDL Inv			0	0	0	0	0	0	0	0	0	0	0.0
<b>Frisco 45 Townhomes (320)</b> \$400-\$500 19'	DNE-Frisco Act 4Q22	Starts			0	0	0	0	0	0	0	0	0	0	
		Closings			0	0	0	0	0	0	0	0	0	0	0
		Housing Inv			0	0	0	0	0	0	0	0	0	0	0.0
		VDL Inv			0	0	0	0	0	0	0	0	29	29	n/a
<b>Garza Lake Estates ( 258)</b> \$0-\$0 55'	DNW-Colony Future	Starts			0	0	0	0	0	0	0	0	0	0	
		Closings			0	0	0	0	0	0	0	0	0	0	0
		Housing Inv			0	0	0	0	0	0	0	0	0	0	0.0
		VDL Inv			0	0	0	0	0	0	0	0	0	0	0.0
<b>Gates of Prestonwood (316)</b> \$600-\$1000 80' J Anthony Custom Homes/J. Stiles/JD Smith Custom Homes/Laguna Homes	DNW-Carrltn Act 4Q02	Starts			0	0	0	0	0	0	0	0	0	0	
		Closings			0	0	0	1	0	0	0	0	0	0	0
		Housing Inv			1	1	1	0	0	0	0	0	0	0	0.0
		VDL Inv			1	1	1	1	1	1	1	1	1	1	n/a
<b>Grace Park (44)</b> \$350-\$450 87'-100' Taylor Morrison	DNW-FlwrMnd Act 1Q23	Starts			0	0	0	0	0	0	0	0	0	0	
		Closings			0	0	0	0	0	0	0	0	0	0	0
		Housing Inv			0	0	0	0	0	0	0	0	0	0	0.0
		VDL Inv			0	0	0	0	0	0	0	0	0	20	n/a
<b>Great Lakes Crossing (166)</b> \$0-\$0 50'	DNW-Lewisvl Future	Starts			0	0	0	0	0	0	0	0	0	0	
		Closings			0	0	0	0	0	0	0	0	0	0	0
		Housing Inv			0	0	0	0	0	0	0	0	0	0	0.0
		VDL Inv			0	0	0	0	0	0	0	0	0	0	0.0
<b>Greenvalley Addition (172)</b> \$300-\$400 20'	DNW-Lewisvl Act 4Q20	Starts			0	0	0	0	0	0	0	0	0	0	
		Closings			0	0	6	0	0	0	0	0	0	0	0
		Housing Inv			6	6	0	0	0	0	0	0	0	0	0.0
		VDL Inv			0	0	0	0	0	4	4	4	4	4	n/a

Dallas/Ft. Worth Residential Survey (1Q23)

Copyright Metrostudy

Page 2 of 7

\*Inventory Supply = Housing Inv/(Annual Closings/12)  
Vacant Developed Lot Supply = VDL Inv/(Annual Starts/12)

N/A indicates Inventory is present but cannot calculate months of supply without starts or closings (see above).

**metrystudy**  
A hanleywood Company

Sales: 1-800-227-8839



# Quarterly Activity & Inventory Report

## Lewisville ISD

Sorted By Subdivision

Subdivision Name (Map No)	Sub Area	Price Range	Lot Size	Status	1Q21	2Q21	3Q21	4Q21	1Q22	2Q22	3Q22	4Q22	1Q23	Ann. Rates/ *Inv. Supply
<b>Heritage Trails Addi (171)</b>	DNW-Lewisvl			Starts	40	26	11	26	36	22	43	45	0	<b>110</b>
\$400-\$474		24'-32'		Act 1Q21 Closings	0	0	0	32	29	49	27	28	55	<b>159</b>
<i>Gehan Homes/History Maker Homes</i>				Housing Inv	40	66	77	71	78	51	67	84	29	<b>2.2 mos</b>
				VDL Inv	208	182	171	107	77	55	12	0	0	<b>0.0</b>
<b>Heritage West (126)</b>	DNW-FlwrMnd			Starts	0	0	0	0	8	21	0	0	1	<b>22</b>
\$1000-\$1200		70'		Act 4Q21 Closings	0	0	0	0	0	0	0	7	21	<b>28</b>
<i>Toll Brothers Inc</i>				Housing Inv	0	0	0	0	8	29	29	22	2	<b>0.9 mos</b>
				VDL Inv	0	0	0	30	22	1	1	1	0	<b>0.0</b>
<b>Hidden Creek Estates (34)</b>	DNW-CCanyon			Starts	0	0	0	0	0	0	0	3	0	<b>3</b>
\$850-\$1000		250'		Act 2Q08 Closings	0	0	0	0	0	0	0	0	3	<b>3</b>
<i>Precision Builders</i>				Housing Inv	0	0	0	0	0	0	0	3	0	<b>0.0</b>
				VDL Inv	8	8	8	8	8	8	8	3	3	<b>12.0 mos</b>
<b>Highland Shores (77)</b>	DNW-HighVil			Starts	0	0	0	1	0	0	0	2	0	<b>2</b>
\$235-\$750		60'-110'		Act 2Q84 Closings	0	0	0	0	0	0	0	1	0	<b>1</b>
<i>Fountain Custom Homes/Timcrest Homes</i>				Housing Inv	0	0	0	1	1	1	1	2	2	<b>24.0 mos</b>
				VDL Inv	5	5	5	4	4	3	3	1	1	<b>6.0 mos</b>
<b>Hillside of Flower M (5)</b>	DNW-FlwrMnd			Starts	1	3	0	0	1	5	0	5	2	<b>12</b>
\$700-\$1200		110'		Act 2Q18 Closings	1	2	0	0	2	3	1	2	2	<b>8</b>
<i>Nix Custom Homes/Rembert Custom Builders/Victor Myers Custom Homes</i>				Housing Inv	2	3	3	3	2	4	3	6	6	<b>9.0 mos</b>
				VDL Inv	22	19	19	19	18	13	13	8	6	<b>6.0 mos</b>
<b>Kensington Place (304)</b>	DNW-Carrlltn			Starts	0	0	0	0	1	14	27	26	11	<b>78</b>
\$632-\$1028		50'-70'		Act 4Q21 Closings	0	0	0	0	0	0	0	6	18	<b>24</b>
<i>Darling Homes/K. Hovnanian Homes</i>				Housing Inv	0	0	0	0	1	15	42	62	55	<b>27.5 mos</b>
				VDL Inv	0	0	0	95	94	81	54	28	17	<b>2.6 mos</b>
<b>Kings Gate (Plano) (323)</b>	DNE-Plano			Starts	1	0	0	2	0	0	0	0	0	<b>0</b>
\$1900-\$6500		162'		Act 1Q96 Closings	0	0	0	0	0	0	0	0	0	<b>0</b>
				Housing Inv	1	1	1	3	3	3	3	3	3	<b>n/a</b>
				VDL Inv	4	4	4	2	2	2	3	3	3	<b>n/a</b>
<b>Lakeridge Townhomes (246)</b>	DNW-Lewisvl			Starts	0	0	0	0	0	0	0	0	0	<b>0</b>
\$256-\$270		22'		Act 2Q06 Closings	0	0	0	0	0	0	0	0	0	<b>0</b>
<i>Sumeer Homes</i>				Housing Inv	0	0	0	0	0	0	0	0	0	<b>0.0</b>
				VDL Inv	1	1	1	1	1	1	1	1	1	<b>n/a</b>
<b>Lakeside Crossing To (105)</b>	DNW-FlwrMnd			Starts	0	4	0	0	0	0	0	6	0	<b>6</b>
\$660-\$765		32'		Act 3Q20 Closings	0	0	5	0	0	0	0	4	1	<b>5</b>
<i>Encore Luxury Homes Texas</i>				Housing Inv	5	9	4	4	4	4	4	6	5	<b>12.0 mos</b>
				VDL Inv	10	6	6	6	6	6	6	0	0	<b>0.0</b>
<b>Lakeside Tower (92)</b>	DNW-FlwrMnd			Starts	0	0	0	0	0	0	0	0	0	<b>0</b>
\$1152-\$3854				Act 2Q19 Closings	8	5	1	1	0	0	1	2	0	<b>3</b>
				Housing Inv	11	6	5	4	4	4	3	1	1	<b>4.0 mos</b>
				VDL Inv	0	0	0	0	0	0	0	0	0	<b>0.0</b>
<b>Lakeside Village (102)</b>	DNW-FlwrMnd			Starts	0	0	0	0	0	0	0	0	2	<b>2</b>
\$1000-\$1250		40'		Act 4Q21 Closings	0	0	0	0	0	0	0	0	0	<b>0</b>
<i>VanTrease Architectural Design</i>				Housing Inv	0	0	0	0	0	0	0	0	2	<b>n/a</b>
				VDL Inv	0	0	0	57	57	57	57	57	55	<b>330.0 mos</b>

Dallas/Ft. Worth Residential Survey (1Q23)

Copyright Metrostudy

Page 3 of 7

\*Inventory Supply = Housing Inv/(Annual Closings/12)  
Vacant Developed Lot Supply = VDL Inv/(Annual Starts/12)

N/A indicates Inventory is present but cannot calculate months of supply without starts or closings (see above).

**metrstudy**  
A Hanleywood Company

Sales: 1-800-227-8839

# Quarterly Activity & Inventory Report

## Lewisville ISD

Sorted By Subdivision

Subdivision Name (Map No)	Sub Area	Status	1Q21	2Q21	3Q21	4Q21	1Q22	2Q22	3Q22	4Q22	1Q23	Ann. Rates/ *Inv. Supply	
<b>Lakeside Villas (96)</b> \$650-\$750 35'	DNW-FlwrMnd	Starts	0	0	0	0	0	7	0	0	0	7	
		Act 1Q22	0	0	0	0	0	0	0	0	0	0	
		Housing Inv	0	0	0	0	0	7	7	7	7	n/a	
		VDL Inv	0	0	0	0	7	0	0	0	0	0.0	
<b>Lakewood (Flower Mou (125)</b> \$0-\$0 31'-50'	DNW-FlwrMnd	Starts	0	0	0	0	0	0	0	0	0	0	
		Future	0	0	0	0	0	0	0	0	0	0	
		Housing Inv	0	0	0	0	0	0	0	0	0	0	0.0
		VDL Inv	0	0	0	0	0	0	0	0	0	0	0.0
<b>Lakewood Hills Addit (276)</b> \$550-\$825 50'-80' <i>Beazer Homes/Lennar Homes/Pulte Homes</i>	DNW-Lewisvl	Starts	4	13	33	25	18	36	32	13	75	156	
		Act 4Q17	9	4	7	4	10	34	15	26	50	125	
		Housing Inv	14	23	49	70	78	80	97	84	109	10.5 mos	
		VDL Inv	9	36	33	190	184	144	116	102	20	1.5 mos	
<b>Larry Ho Addition (192)</b> \$0-\$0 21'	DNW-Lewisvl	Starts	0	0	0	0	0	0	0	0	0	0	
		Future	0	0	0	0	0	0	0	0	0	0	
		Housing Inv	0	0	0	0	0	0	0	0	0	0	0.0
		VDL Inv	0	0	0	0	0	0	0	0	0	0	0.0
<b>Legends, The (Flower (59)</b> \$418-\$445 50' <i>Village Builders Inc</i>	DNW-FlwrMnd	Starts	0	0	0	0	0	0	0	0	0	0	
		Act 1Q15	0	0	0	0	0	0	0	0	0	0	
		Housing Inv	0	0	0	0	0	0	0	0	0	0	0.0
		VDL Inv	1	1	1	1	1	1	1	1	1	1	n/a
<b>Manors at Forestbroo (210)</b> \$335-\$390 26' <i>North American Land Company</i>	DNW-Lewisvl	Starts	4	9	11	4	1	6	8	7	0	21	
		Act 4Q18	0	11	0	13	0	0	0	4	19	23	
		Housing Inv	26	24	35	26	27	33	41	44	25	13.0 mos	
		VDL Inv	71	62	51	47	46	40	32	25	25	14.3 mos	
<b>Normandy Village (178)</b> \$509-\$527 25' <i>Megatel Homes</i>	DNW-Lewisvl	Starts	7	6	4	7	0	0	41	0	0	41	
		Act 4Q19	1	5	0	0	0	6	0	0	12	18	
		Housing Inv	13	14	18	25	25	19	60	60	48	32.0 mos	
		VDL Inv	58	52	48	41	41	41	0	0	0	0.0	
<b>Oakbend Estates (Lew (219)</b> \$450-\$550 30' <i>J Rose Architects &amp; Builders</i>	DNW-Lewisvl	Starts	5	5	0	4	0	6	0	1	0	7	
		Act 1Q21	0	0	3	2	0	9	0	1	0	10	
		Housing Inv	5	10	7	9	9	6	6	6	6	7.2 mos	
		VDL Inv	22	17	17	13	13	7	7	6	6	10.3 mos	
<b>Oakbridge Crossing (101)</b> \$0-\$0 80'	DNW-FlwrMnd	Starts	0	0	0	0	0	0	0	0	0	0	
		Future	0	0	0	0	0	0	0	0	0	0	
		Housing Inv	0	0	0	0	0	0	0	0	0	0	0.0
		VDL Inv	0	0	0	0	0	0	0	0	0	0	0.0
<b>Parker Crossing (277)</b> \$0-\$0 41'	DNW-Carrlltn	Starts	0	0	0	0	0	0	0	0	0	0	
		Future	0	0	0	0	0	0	0	0	0	0	
		Housing Inv	0	0	0	0	0	0	0	0	0	0	0.0
		VDL Inv	0	0	0	0	0	0	0	0	0	0	0.0
<b>Parker Place (Lewisv (251)</b> \$645-\$726 40' <i>David Weekley Homes</i>	DNW-Lewisvl	Starts	0	0	0	0	2	8	7	11	16	42	
		Act 4Q21	0	0	0	0	0	0	0	1	16	17	
		Housing Inv	0	0	0	0	2	10	17	27	27	19.1 mos	
		VDL Inv	0	0	0	130	128	120	113	102	86	24.6 mos	

Dallas/Ft. Worth Residential Survey (1Q23)

Copyright Metrostudy

Page 4 of 7

\*Inventory Supply = Housing Inv/(Annual Closings/12)  
Vacant Developed Lot Supply = VDL Inv/(Annual Starts/12)

N/A indicates Inventory is present but cannot calculate months of supply without starts or closings (see above).

**metrstudy**  
A hanleywood Company

Sales: 1-800-227-8839

# Quarterly Activity & Inventory Report

## Lewisville ISD

Sorted By Subdivision

Subdivision Name (Map No)	Sub Area	Price Range	Lot Size	Status	1Q21	2Q21	3Q21	4Q21	1Q22	2Q22	3Q22	4Q22	1Q23	Ann. Rates/ *Inv. Supply		
<b>Parks at Uecker Addi (218)</b> \$0-\$0 40'	DNW-Lewisvl	Future	Starts	0	0	0	0	0	0	0	0	0	0	0		
			Closings	0	0	0	0	0	0	0	0	0	0	0	0	
			Housing Inv	0	0	0	0	0	0	0	0	0	0	0	0	0.0
			VDL Inv	0	0	0	0	0	0	0	0	0	0	0	0	0.0
<b>Red Hawk Addition (46)</b> \$0-\$0 40'	DNW-FlwrMnd	Future	Starts	0	0	0	0	0	0	0	0	0	0	0		
			Closings	0	0	0	0	0	0	0	0	0	0	0	0	
			Housing Inv	0	0	0	0	0	0	0	0	0	0	0	0	0.0
			VDL Inv	0	0	0	0	0	0	0	0	0	0	0	0	0.0
<b>Reserve at Chapel Hi (65)</b> \$717-\$812 65'-89' David Weekley Homes	DNW-HighVil	Act 2Q21	Starts	0	1	17	14	16	11	2	3	5	5	21		
			Closings	0	0	0	1	6	6	12	16	12	12	12	46	
			Housing Inv	0	1	18	31	41	46	36	23	16	16	16	16	4.2 mos
			VDL Inv	0	71	54	40	24	13	11	8	3	3	3	3	1.7 mos
<b>River Walk/Lakeshore (103)</b> \$489-\$650 22'-40' Mattamy Homes	DNW-FlwrMnd	Act 1Q18	Starts	5	0	9	0	0	0	0	0	0	4	4		
			Closings	7	0	0	0	0	6	1	0	8	8	8	15	
			Housing Inv	6	6	15	15	15	9	8	8	4	4	4	4	3.2 mos
			VDL Inv	57	57	48	48	64	48	48	48	44	44	44	44	132.0 mos
<b>Rock Creek Townhomes (292)</b> \$0-\$0 25'	DNE-Frisco	Future	Starts	0	0	0	0	0	0	0	0	0	0	0		
			Closings	0	0	0	0	0	0	0	0	0	0	0	0	
			Housing Inv	0	0	0	0	0	0	0	0	0	0	0	0	0.0
			VDL Inv	0	0	0	0	0	0	0	0	0	0	0	0	0.0
<b>Saddlewood (Flower M (27)</b> \$989-\$1046 120' Bud Bartley Homes/Victor Myers Custom Homes	DNW-FlwrMnd	Act 4Q15	Starts	0	0	2	1	1	0	0	0	0	0	0		
			Closings	0	0	0	3	0	0	1	1	0	0	0	2	
			Housing Inv	2	2	4	2	3	3	2	1	1	1	1	1	6.0 mos
			VDL Inv	6	6	4	3	2	2	2	2	2	2	2	2	n/a
<b>Serenity (Flower Mou (3)</b> \$0-\$0 80'	DNW-FlwrMnd	Future	Starts	0	0	0	0	0	0	0	0	0	0	0		
			Closings	0	0	0	0	0	0	0	0	0	0	0	0	
			Housing Inv	0	0	0	0	0	0	0	0	0	0	0	0	0.0
			VDL Inv	0	0	0	0	0	0	0	0	0	0	0	0	0.0
<b>South Village Additi (199)</b> \$329-\$380 44' Crescent Estates Custom Homes	DNW-Lewisvl	Act 4Q17	Starts	7	2	0	1	0	5	0	0	0	0	5		
			Closings	0	1	9	19	0	2	0	0	0	0	0	2	
			Housing Inv	27	28	19	1	1	4	4	4	4	4	4	4	24.0 mos
			VDL Inv	9	7	7	6	6	1	1	1	1	1	1	1	2.4 mos
<b>Spectra Heights Addi (223)</b> \$0-\$0 24'	DNW-Lewisvl	Future	Starts	0	0	0	0	0	0	0	0	0	0	0		
			Closings	0	0	0	0	0	0	0	0	0	0	0	0	
			Housing Inv	0	0	0	0	0	0	0	0	0	0	0	0	0.0
			VDL Inv	0	0	0	0	0	0	0	0	0	0	0	0	0.0
<b>Stonebriar Country C (317)</b> \$849-\$1900 90' Parthenon Custom Homes	DNE-Frisco	Act 2Q01	Starts	0	0	0	0	0	0	0	0	0	0	0		
			Closings	0	0	0	0	0	0	0	0	0	0	0	0	
			Housing Inv	0	0	0	0	0	0	0	0	0	0	0	0	0.0
			VDL Inv	4	4	4	4	4	4	4	4	4	4	4	4	n/a
<b>Sunset Point at Twin (35)</b> \$1100-\$1300 80' Bud Bartley Homes	DNW-FlwrMnd	Act 4Q21	Starts	0	0	0	0	2	0	6	3	0	0	9		
			Closings	0	0	0	0	0	0	0	0	10	10	10	10	
			Housing Inv	0	0	0	0	2	2	8	11	1	1	1	1	1.2 mos
			VDL Inv	0	0	0	18	16	16	10	7	7	7	7	7	9.3 mos

Dallas/Ft. Worth Residential Survey (1Q23)

Copyright Metrostudy

Page 5 of 7

\*Inventory Supply = Housing Inv/(Annual Closings/12)  
Vacant Developed Lot Supply = VDL Inv/(Annual Starts/12)

N/A indicates Inventory is present but cannot calculate months of supply without starts or closings (see above).

**metrstudy**  
A hanleywood Company

Sales: 1-800-227-8839

# Quarterly Activity & Inventory Report

## Lewisville ISD

Sorted By Subdivision

Subdivision Name (Map No)	Sub Area	Price Range	Lot Size	Status	1Q21	2Q21	3Q21	4Q21	1Q22	2Q22	3Q22	4Q22	1Q23	Ann. Rates/ *Inv. Supply
<b>Terracina (Flower Mo (55))</b>	DNW-FlwrMnd	\$695-\$771	100'	Act 3Q12	1	0	0	0	0	0	0	0	0	0
				Starts	1	0	0	0	0	0	0	0	0	0
				Closings	4	11	2	1	0	1	0	0	0	1
				Housing Inv	15	4	2	1	1	0	0	0	0	0.0
				VDL Inv	1	1	1	1	1	1	1	1	1	n/a
<b>The Corvalla at Ston (332)</b>	DNE-Frisco	\$525-\$2000		Act 1Q18	0	0	0	0	0	0	0	0	0	0
				Starts	0	0	0	0	0	0	0	0	0	0
				Closings	2	0	0	0	1	0	1	0	1	2
				Housing Inv	24	24	24	24	23	23	22	22	21	126.0 mos
				VDL Inv	0	0	0	0	0	0	0	0	0	0.0
<b>The Hills of Kingswo (281)</b>	DNE-Frisco	\$1460-\$4500	65'-150'	Act 1Q09	0	2	27	12	5	13	7	6	9	35
				Starts	0	2	27	12	5	13	7	6	9	35
				Closings	3	19	0	9	13	12	11	5	10	38
				Housing Inv	38	21	48	51	43	44	40	41	40	12.6 mos
				VDL Inv	109	107	80	76	70	55	55	49	40	13.7 mos
				<i>Bella Custom Homes/Crest Custom Homes/Grand Homes/Greystone Custom Homebuilders/J Lambert Custom Homes/Laguna Homes/Millennial Design Build/Monaco Homes Ltd/Oak Creek Custom Homes/Premier Renovations/Reynolds Signature Homes/Ron Davis CH/Sovereign Custom</i>										
<b>Three Bridges Estate (68)</b>	DNW-FlwrMnd	\$800-\$1000	258'	Act 2Q05	0	0	0	0	0	0	0	0	0	0
				Starts	0	0	0	0	0	0	0	0	0	0
				Closings	0	0	0	0	0	0	0	0	0	0
				Housing Inv	0	0	0	0	0	0	0	0	0	0.0
				VDL Inv	2	2	2	2	2	2	2	2	2	n/a
<b>Timber Creek Willows (204)</b>	DNW-Lewisvl	\$0-\$0	25'	Future	0	0	0	0	0	0	0	0	0	0
				Starts	0	0	0	0	0	0	0	0	0	0
				Closings	0	0	0	0	0	0	0	0	0	0
				Housing Inv	0	0	0	0	0	0	0	0	0	0.0
				VDL Inv	0	0	0	0	0	0	0	0	0	0.0
<b>Town Lake at Flower (24)</b>	DNW-FlwrMnd	\$1518-\$1627	100'-120'	Act 1Q17	11	1	11	11	3	9	7	11	1	28
				Starts	11	1	11	11	3	9	7	11	1	28
				Closings	6	8	7	3	9	5	9	9	7	30
				Housing Inv	26	19	23	31	25	29	27	29	23	9.2 mos
				VDL Inv	58	57	46	35	32	23	16	5	4	1.7 mos
<b>Traditions of Flower (66)</b>	DNW-FlwrMnd	\$0-\$0	107'	Future	0	0	0	0	0	0	0	0	0	0
				Starts	0	0	0	0	0	0	0	0	0	0
				Closings	0	0	0	0	0	0	0	0	0	0
				Housing Inv	0	0	0	0	0	0	0	0	0	0.0
				VDL Inv	0	0	0	0	0	0	0	0	0	0.0
<b>Trinity Townhomes (L (215))</b>	DNW-Lewisvl	\$0-\$0	17'	Future	0	0	0	0	0	0	0	0	0	0
				Starts	0	0	0	0	0	0	0	0	0	0
				Closings	0	0	0	0	0	0	0	0	0	0
				Housing Inv	0	0	0	0	0	0	0	0	0	0.0
				VDL Inv	0	0	0	0	0	0	0	0	0	0.0
<b>Vickery (32)</b>	DNW-CCanyon	\$740-\$1254	62'-100'	Act 1Q21	0	3	14	24	21	15	15	22	6	58
				Starts	0	3	14	24	21	15	15	22	6	58
				Closings	0	0	0	0	1	5	11	39	9	64
				Housing Inv	0	3	17	41	61	71	75	58	55	10.3 mos
				VDL Inv	99	123	131	134	113	98	83	111	105	21.7 mos
<b>Village Townhomes (299)</b>	DNW-Colony	\$0-\$0	30'	Future	0	0	0	0	0	0	0	0	0	0
				Starts	0	0	0	0	0	0	0	0	0	0
				Closings	0	0	0	0	0	0	0	0	0	0
				Housing Inv	0	0	0	0	0	0	0	0	0	0.0
				VDL Inv	0	0	0	0	0	0	0	0	0	0.0

# Quarterly Activity & Inventory Report

## Lewisville ISD

Sorted By Subdivision

Subdivision Name (Map No)	Sub Area	Price Range	Lot Size	Status	1Q21	2Q21	3Q21	4Q21	1Q22	2Q22	3Q22	4Q22	1Q23	Ann. Rates/ *Inv. Supply
<b>Villas at Southgate (133)</b>	DNW-FlwrMnd			Starts	32	20	7	11	13	28	11	0	0	<b>39</b>
\$445-\$566	Act 3Q18	22'		Closings	8	11	25	2	5	8	16	6	0	<b>30</b>
<i>CB Jeni Homes</i>				Housing Inv	34	43	25	34	42	62	57	51	51	<b>20.4 mos</b>
				VDL Inv	96	78	71	60	47	19	8	8	8	<b>2.5 mos</b>
<b>Villas of Bellaire (189)</b>	DNW-Lewisvl			Starts	0	0	0	0	0	0	0	0	0	<b>0</b>
\$0-\$0	Future	26'		Closings	0	0	0	0	0	0	0	0	0	<b>0</b>
				Housing Inv	0	0	0	0	0	0	0	0	0	<b>0.0</b>
				VDL Inv	0	0	0	0	0	0	0	0	0	<b>0.0</b>
<b>Villas of Prestonwoo (314)</b>	DNW-Carrltn			Starts	14	30	11	25	0	14	4	0	0	<b>18</b>
\$451-\$530	Act 1Q17	28'		Closings	5	0	19	35	10	20	8	0	16	<b>44</b>
<i>Beazer Homes</i>				Housing Inv	25	55	47	37	27	21	17	17	1	<b>0.3 mos</b>
				VDL Inv	69	39	43	18	18	4	0	0	0	<b>0.0</b>
<b>Vista del Lago Addit (226)</b>	DNW-Lewisvl			Starts	10	21	3	6	16	21	0	9	0	<b>30</b>
\$416-\$491	Act 3Q19	22'		Closings	10	10	6	11	0	9	17	18	0	<b>44</b>
<i>CB Jeni Homes</i>				Housing Inv	24	35	32	27	43	55	38	29	29	<b>7.9 mos</b>
				VDL Inv	76	55	52	46	30	9	9	0	0	<b>0.0</b>
<b>Westport Lakeview Vi (264)</b>	DNW-Colony			Starts	0	0	8	0	7	3	0	0	0	<b>3</b>
\$970-\$980	Act 1Q19	25'		Closings	0	0	0	6	4	0	4	0	0	<b>4</b>
<i>P Custom Homes</i>				Housing Inv	6	6	14	8	11	14	10	10	10	<b>30.0 mos</b>
				VDL Inv	18	18	10	10	3	0	0	0	0	<b>0.0</b>
<b>Whitestone Village ( 82)</b>	DNW-HighVil			Starts	0	0	0	0	0	0	0	0	0	<b>0</b>
\$0-\$0	Future	30'		Closings	0	0	0	0	0	0	0	0	0	<b>0</b>
				Housing Inv	0	0	0	0	0	0	0	0	0	<b>0.0</b>
				VDL Inv	0	0	0	0	0	0	0	0	0	<b>0.0</b>
<b>Whyburn (81)</b>	DNW-FlwrMnd			Starts	0	0	0	0	0	0	0	0	0	<b>0</b>
\$0-\$0	Future	80'		Closings	0	0	0	0	0	0	0	0	0	<b>0</b>
				Housing Inv	0	0	0	0	0	0	0	0	0	<b>0.0</b>
				VDL Inv	0	0	0	0	0	0	0	0	0	<b>0.0</b>
<b>Windhaven Crossing T (245)</b>	DNW-Lewisvl			Starts	13	0	7	6	22	32	0	7	27	<b>66</b>
\$506-\$537	Act 1Q17	22'		Closings	40	0	15	10	0	0	0	9	16	<b>25</b>
<i>Mattamy Homes</i>				Housing Inv	19	19	11	7	29	61	61	59	70	<b>33.6 mos</b>
				VDL Inv	109	109	102	96	74	42	42	35	8	<b>1.5 mos</b>
<b>Selection Totals</b>				Starts	<b>176</b>	<b>191</b>	<b>309</b>	<b>234</b>	<b>233</b>	<b>301</b>	<b>269</b>	<b>213</b>	<b>235</b>	<b>1,018</b>
				Closings	<b>127</b>	<b>101</b>	<b>122</b>	<b>182</b>	<b>137</b>	<b>267</b>	<b>240</b>	<b>242</b>	<b>336</b>	<b>1,085</b>
				Housing Inv	<b>413</b>	<b>503</b>	<b>690</b>	<b>742</b>	<b>838</b>	<b>872</b>	<b>901</b>	<b>872</b>	<b>771</b>	<b>8.5 mos</b>
				VDL Inv	<b>1,678</b>	<b>1,742</b>	<b>1,476</b>	<b>1,755</b>	<b>1,562</b>	<b>1,234</b>	<b>1,054</b>	<b>950</b>	<b>752</b>	<b>8.9 mos</b>

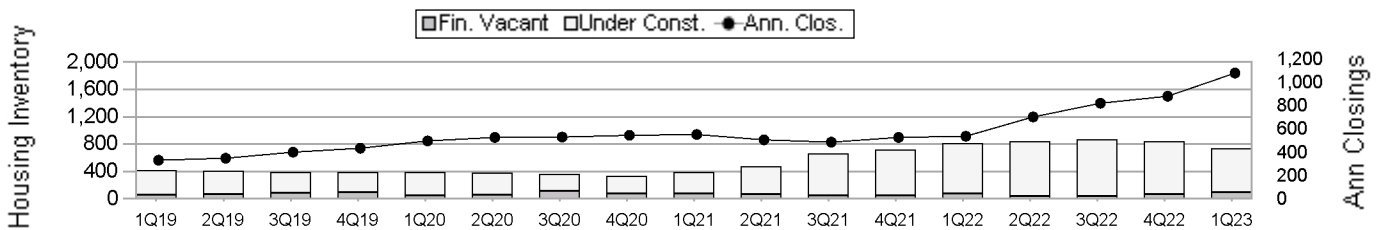


# Historical Housing Activity Summary

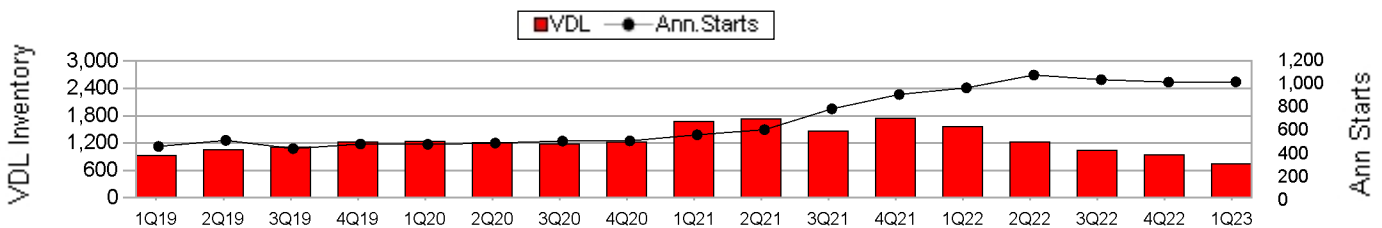
## Lewisville ISD

Qtr	Qtr Clos	Ann Clos	Model	FinVac	UC	Total Inv	Total Supply	Qtr Starts	Ann Starts	VDL	VDL Supply	Fut Lots	Ann Lot Deliv
1Q19	57	336	15	63	350	428	15.3	127	463	936	24.3	2,538	576
2Q19	117	353	39	72	336	447	15.2	136	515	1,059	24.7	2,578	678
3Q19	139	405	29	86	306	421	12.5	113	444	1,121	30.3	2,629	802
4Q19	126	439	17	101	285	403	11.0	108	484	1,224	30.3	2,445	762
1Q20	120	502	23	53	331	407	9.7	124	481	1,239	30.9	2,462	784
2Q20	147	532	27	62	318	407	9.2	147	492	1,212	29.6	2,545	645
3Q20	142	535	30	117	248	395	8.9	130	509	1,185	27.9	2,440	573
4Q20	141	550	30	83	251	364	7.9	110	511	1,228	28.8	2,325	515
1Q21	127	557	28	82	303	413	8.9	176	563	1,678	35.8	1,685	1,002
2Q21	101	511	28	67	408	503	11.8	191	607	1,742	34.4	1,655	1,137
3Q21	122	491	26	55	609	690	16.9	309	786	1,476	22.5	1,920	1,077
4Q21	182	532	25	55	662	742	16.7	234	910	1,755	23.1	1,637	1,437
1Q22	137	542	30	79	729	838	18.6	233	967	1,562	19.4	1,762	851
2Q22	267	708	31	45	796	872	14.8	301	1,077	1,234	13.7	1,747	569
3Q22	240	826	33	37	831	901	13.1	269	1,037	1,054	12.2	1,696	615
4Q22	242	886	32	72	768	872	11.8	213	1,016	950	11.2	1,627	211
1Q23	336	1,085	32	102	637	771	8.5	235	1,018	752	8.9	1,583	208

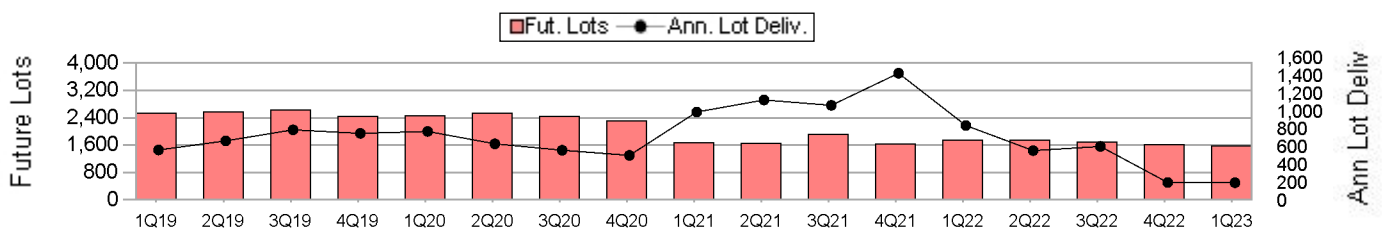
### Housing Inventory and Closings By Quarter



### Vacant Developed Lots and Starts By Quarter



### Future Lots and Deliveries By Quarter



# Price Range Analysis

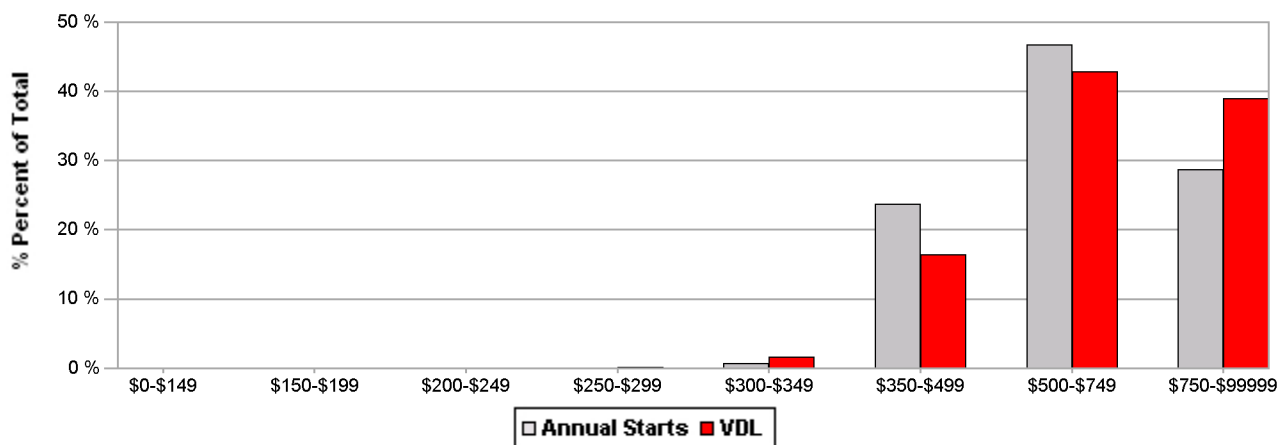
## Lewisville ISD

\$0 \$150,000 \$200,000 \$250,000 \$300,000 \$350,000 \$500,000 \$750,000  
 \$149,999 \$199,999 \$249,999 \$299,999 \$349,999 \$499,999 \$749,999 \$999,999 \*Total

<b>Custom Market Numerical Totals</b>	Ann Starts	1	8	241	476	292	1,018
	Ann Closings	0	8	346	398	332	1,085
	Housing Inv	1	8	107	401	254	771
	VDL Inv	1	12	123	322	293	752
	<b>Housing Supply (Mos)</b>	-	11.3	3.7	12.1	9.2	8.5
<b>VDL Supply (Mos)</b>	12.0	19.0	6.1	8.1	12.0	8.9	

<b>Custom Market Percentage Totals</b>	Ann Starts	0.1 %	0.8 %	23.7 %	46.8 %	28.7 %	100 %
	Ann Closings		0.8 %	31.9 %	36.7 %	30.6 %	100 %
	Housing Inv	0.1 %	1.0 %	13.8 %	52.0 %	33.0 %	100 %
	VDL Inv	0.1 %	1.6 %	16.4 %	42.8 %	39.0 %	100 %

**Price Range Distribution of Annual Starts vs VDL**



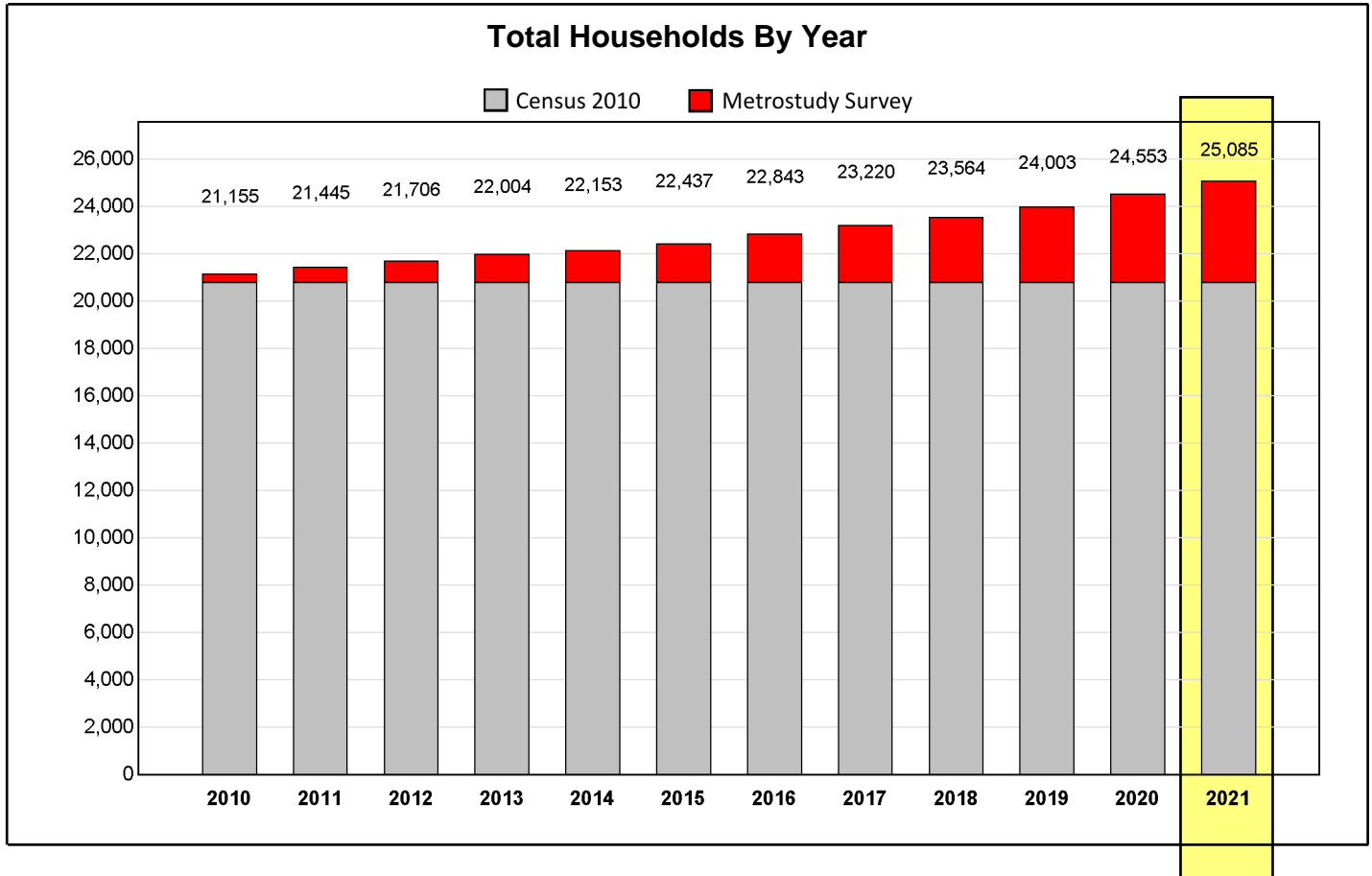
**Price Range Distribution of Annual Closings vs Housing Inventory**



\*Because this report excludes sections without pricing information, the totals may not match those shown on other summary reports.

# Household Growth Summary

Lewisville ISD



Household Development Summary								
Source	Selected Subdivisions		Households By Construction Status			Occupied Units	Annual Closings	Potential Households
	Count	Status	Future Lots	Vacant Lots	Housing Inventory			
Census						20,813		
Metrostudy	0	Builtout	0	0	0	0 <sup>1</sup>		
Metrostudy	49	Active	361	752	771	4,272 <sup>1</sup>		
Metrostudy	23	Future	1,222	0	0	0		
<b>Totals</b>	<b>72</b>		<b>1,583</b>	<b>752</b>	<b>771</b>	<b>25,085</b>	<b>1,085</b>	<b>28,191</b>

1. Cumulative closings since the Year 2010; Occupied units are recorded from onsite surveyor inspections performed during the Metrostudy residential survey. Closings are calculated as the change in occupied units between quarters.