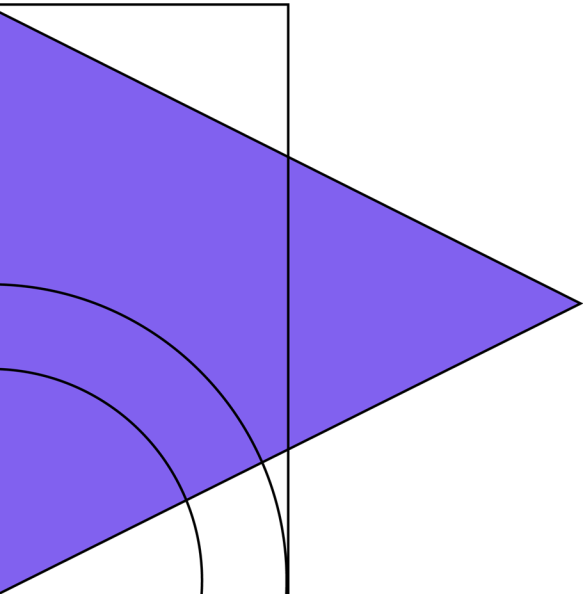
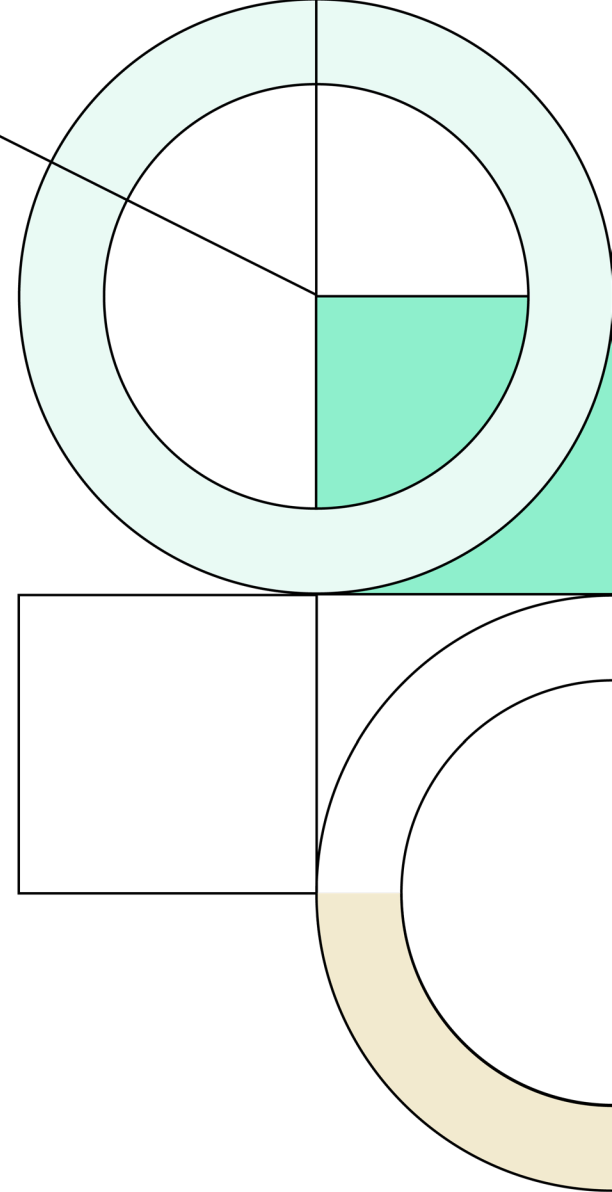




3Q22

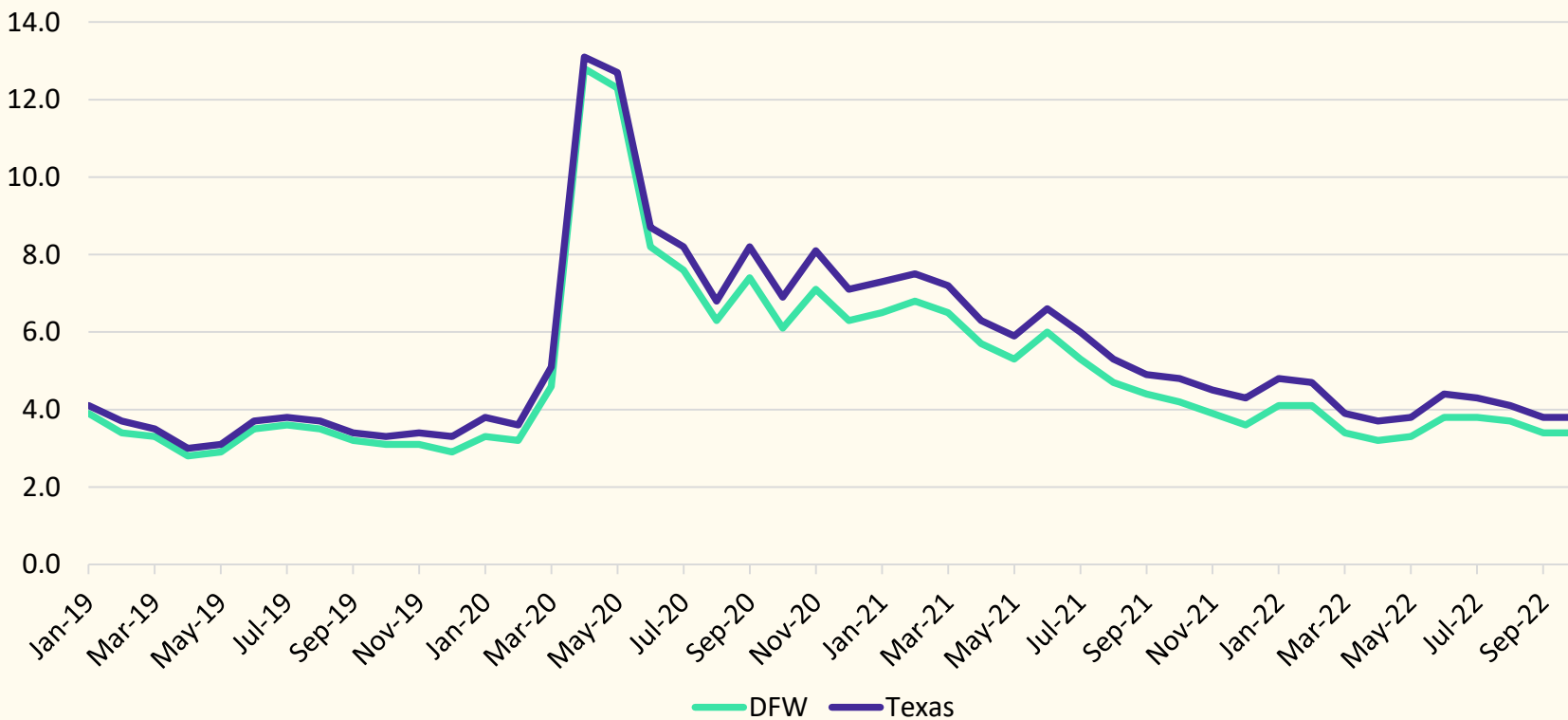
Demographic Report



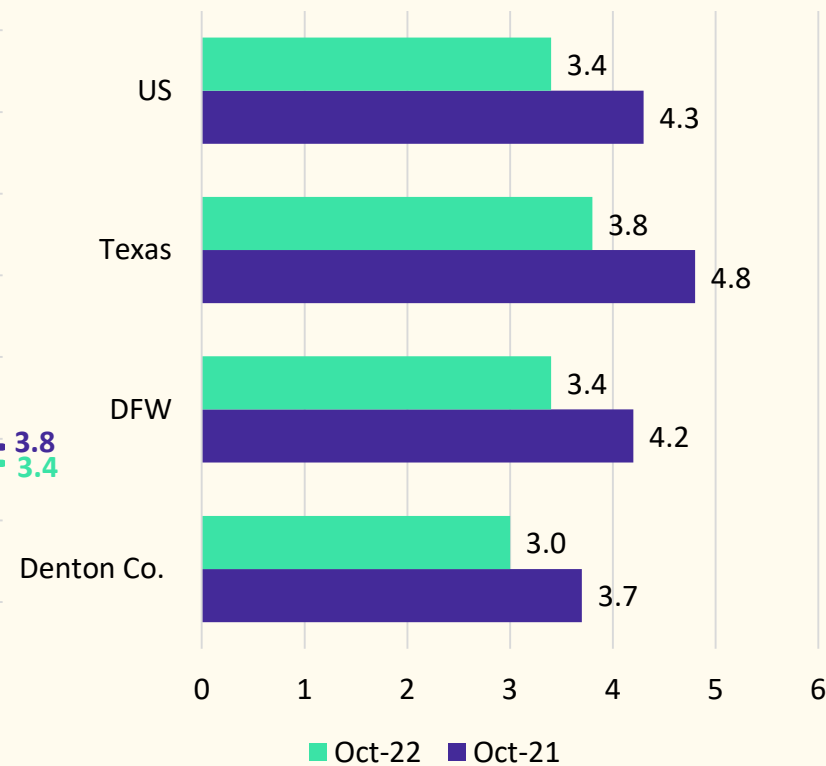


Local Economic Conditions

Unemployment Rate, Jan. 2019 - Oct. 2022



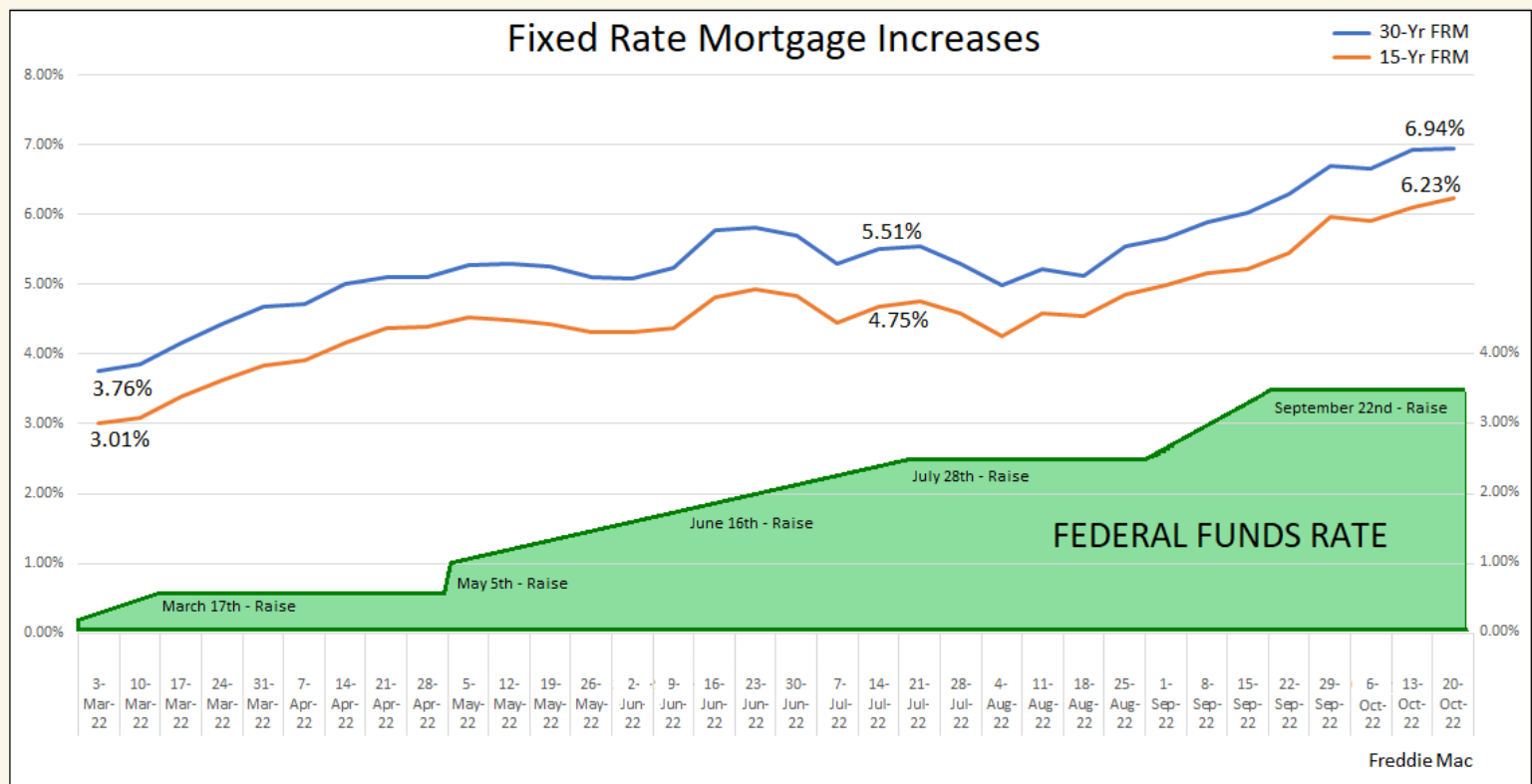
Unemployment Rate, Year over Year





Economic Conditions

Combination of Price Escalation & Interest Rate Increases Impact on Monthly Payments



SPRING 2022
 3.5% Interest Rate
 HOME PRICE
 \$343,221
 Average Monthly House Payment
 \$1,905

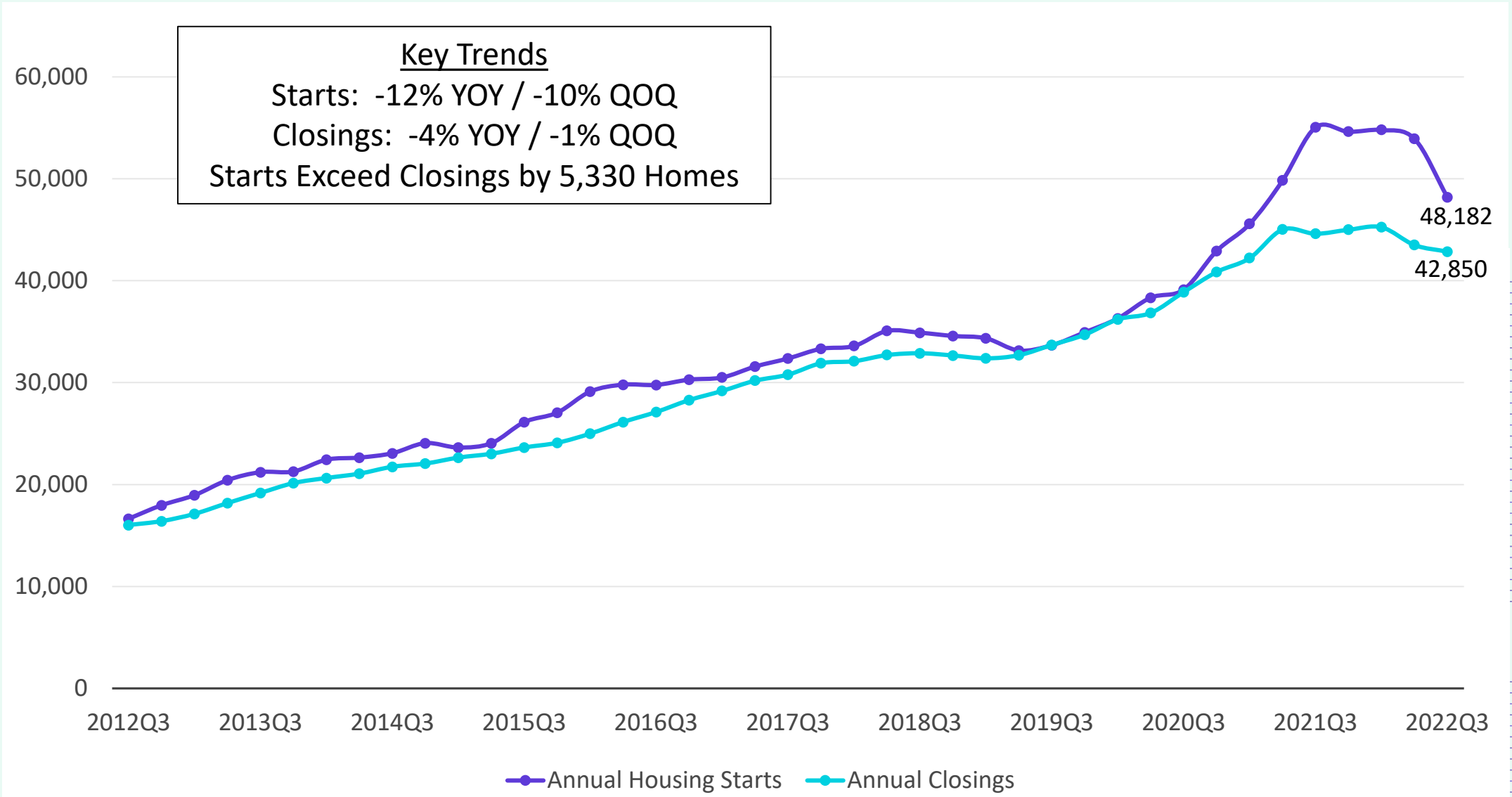
FALL 2022
 7.0% Interest Rate
 HOME PRICE
 \$365,700
 Average Monthly House Payment
 \$2,765

\$860 More Per Month **Increased By 45.15%**

* Since January 2022 – Base Prices have been up by 8% and Mortgage Rates up by approximately 79%



DFW New Home Starts & Closings are Flattening Out



Source: Zonda

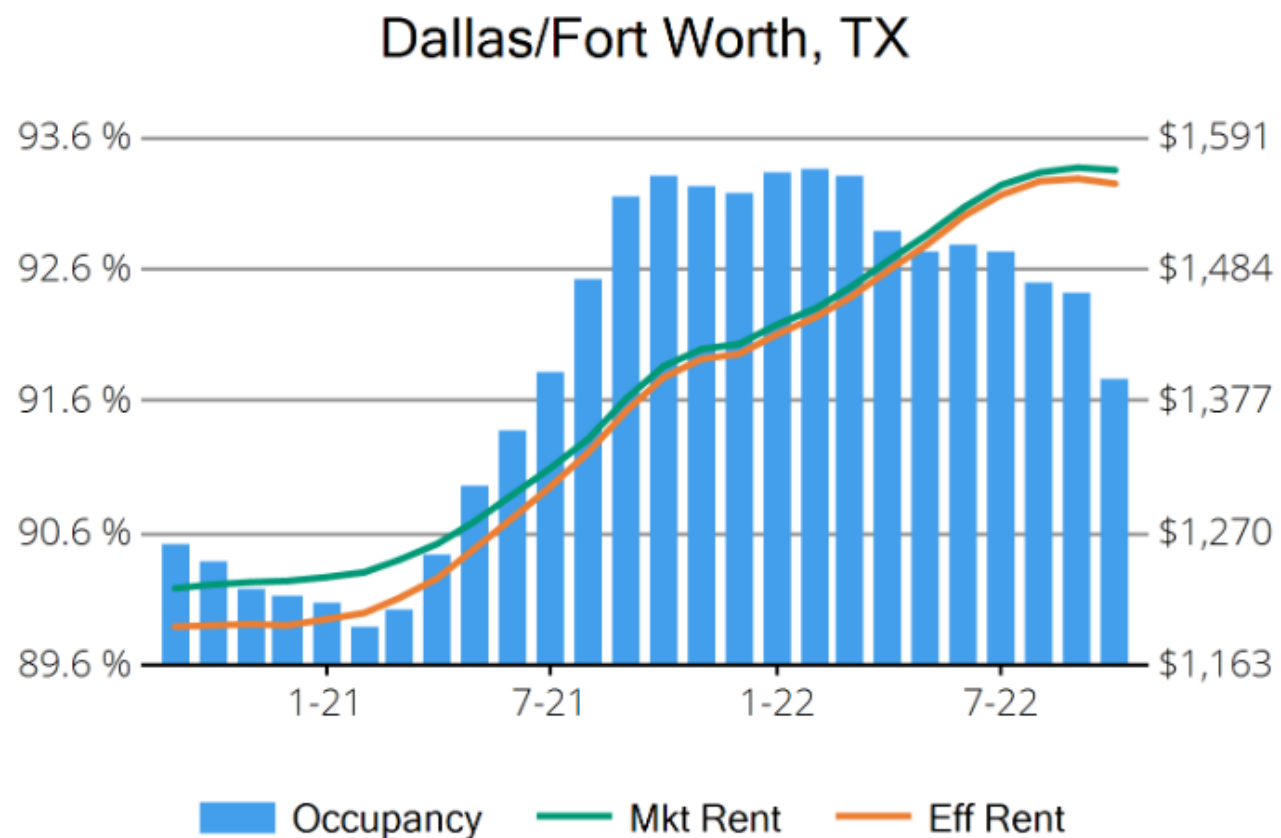


Housing Market Trends: Multi-family Market



Stabilized and Lease-up Properties*

Conventional Properties	Oct 2022	Annual Change
Occupancy	91.7	-1.7%
Unit Change	21,805	
Units Absorbed (Annual)	7,806	
Average Size (SF)	873	+0.3%
Asking Rent	\$1,564	+11.6%
Asking Rent per SF	\$1.79	+11.3%
Effective Rent	\$1,553	+11.5%
Effective Rent per SF	\$1.78	+11.2%
% Offering Concessions	11%	+13.6%
Avg. Concession Package	4.7%	-6.4%





DFW New Home Ranking Report

ISD Ranked by Annual Closings – 3Q22

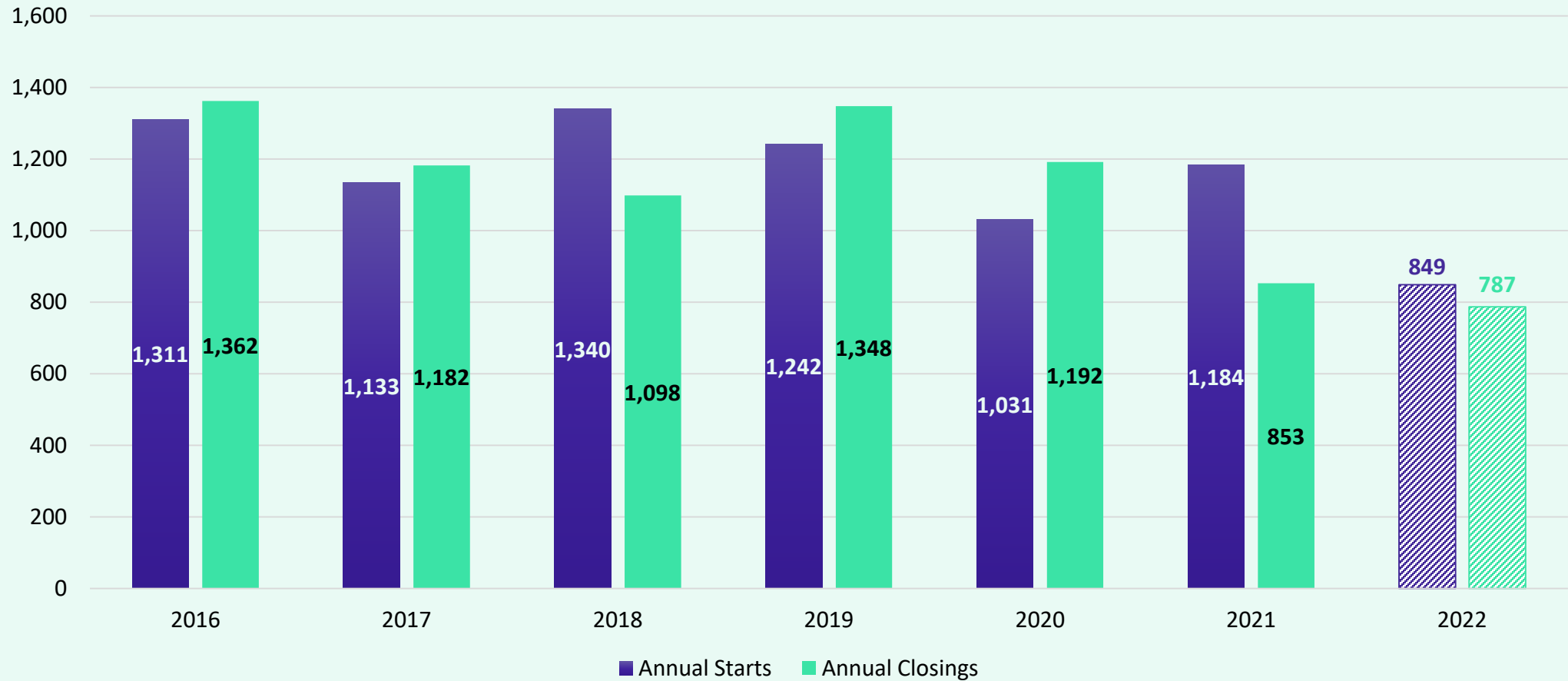
Rank	District Name	Annual Starts	Annual Closings	Inventory	VDL	Future
1	NORTHWEST ISD	3,494	3,543	2,035	3,998	38,239
2	DENTON ISD	2,453	2,553	2,148	3,699	29,153
3	FORNEY ISD	1,589	2,426	929	2,342	29,984
4	PROSPER ISD	2,327	2,270	2,310	3,593	21,227
5	FRISCO ISD	1,311	1,620	1,217	1,495	9,258
6	ROYSE CITY ISD	1,645	1,571	1,085	2,006	8,368
7	DALLAS ISD	1,750	1,495	1,804	2,348	5,963
8	PRINCETON ISD	2,011	1,447	1,477	1,632	10,290
9	MIDLOTHIAN ISD	1,028	1,154	714	2,200	19,669
10	WAXAHACHIE ISD	838	1,090	359	1,266	26,837
11	EAGLE MT-SAGINAW ISD	1,293	1,070	822	2,427	16,735
12	ROCKWALL ISD	1,309	1,061	1,046	2,005	11,268
13	CROWLEY ISD	1,338	1,054	943	2,023	16,422
14	CRANDALL ISD	1,515	1,023	1,139	618	15,212
15	LEWISVILLE ISD**	1,119	990	951	984	1,678*
16	COMMUNITY ISD	1,025	983	566	1,184	7,831
17	CELINA ISD	981	947	947	1,062	35,378
18	MANSFIELD ISD	1,326	930	1,084	1,423	6,868
19	MCKINNEY ISD	1,076	813	1,052	1,384	16,208
20	AUBREY ISD	1,525	791	1,149	993	5,260

* Based on additional housing research by Zonda Education

** Totals **DO NOT** include Age-restricted communities



District New Home Starts and Closings by Quarter

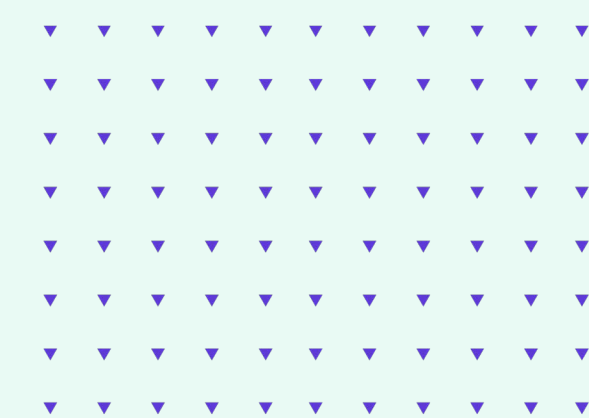


Starts	2016	2017	2018	2019	2020	2021	2022
1Q	338	286	252	317	267	254	262
2Q	313	284	366	273	280	319	340
3Q	400	301	483	372	245	359	247
4Q	260	262	239	280	239	252	
Total	1,311	1,133	1,340	1,242	1,031	1,184	849

Closings	2016	2017	2018	2019	2020	2021	2022
1Q	356	340	185	265	303	214	203
2Q	304	304	307	341	272	203	325
3Q	362	295	327	372	300	211	259
4Q	340	243	279	370	317	225	
Total	1,362	1,182	1,098	1,348	1,192	853	787

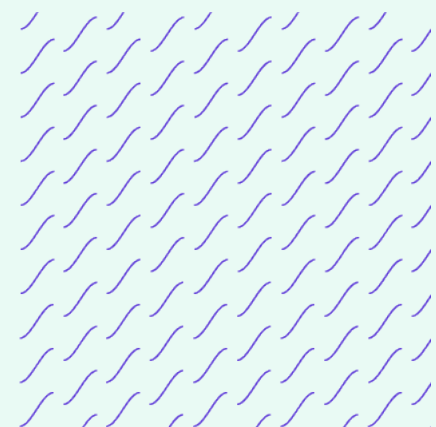


District Housing Overview by Elementary Zone



Elementary	Annual Starts	Quarter Starts	Annual Closings	Quarter Closings	Under Const.	Inventory	Vacant Dev. Lots	Future
BLUEBONNET	121	11	126	26	106	107	52	127
BRIDLEWOOD	2	0	4	1	2	2	2	0
CAMEY	10	0	14	4	10	10	0	0
DEGAN	49	41	6	0	60	61	3	0
DONALD	1	0	0	0	1	1	0	0
ETHRIDGE	0	0	0	0	0	0	0	4
FLOWER MOUND	122	19	67	24	124	129	143	50
HERITAGE	47	2	29	12	38	39	21	90
HIGHLAND VILLAGE	2	0	3	2	1	1	1	0
INDEPENDENCE	77	7	10	0	75	78	155	0
INDIAN CREEK	86	31	94	8	56	59	55	85
LEWISVILLE	1	0	19	6	8	8	0	83
LIBERTY	37	7	36	12	29	30	36	112
MCAULIFFE	0	0	0	0	0	0	9	0
MEMORIAL	257	78	280	94	164	178	274	143
MILL STREET	10	0	35	8	4	4	1	12
MORNINGSIDE	0	0	0	0	0	0	80	74
OLD SETTLERS	8	5	1	0	8	8	12	4
OWEN	13	13	11	6	7	7	20	0
PRAIRIE TRAIL	0	0	0	0	0	0	0	156
ROCKBROOK	43	0	38	17	37	38	9	18
SOUTHRIDGE	29	8	24	0	43	47	39	0
TOM HICKS	44	8	56	12	38	44	60	405
VALLEY RIDGE	160	17	137	27	93	100	12	232
VICKERY	0	0	0	0	0	0	0	54
WELLINGTON	0	0	0	0	0	0	0	29
Grand Total	1,119	247	990	259	904	951	984	1,678

- Highest activity in the category
- Second highest activity in the category
- Third highest activity in the category

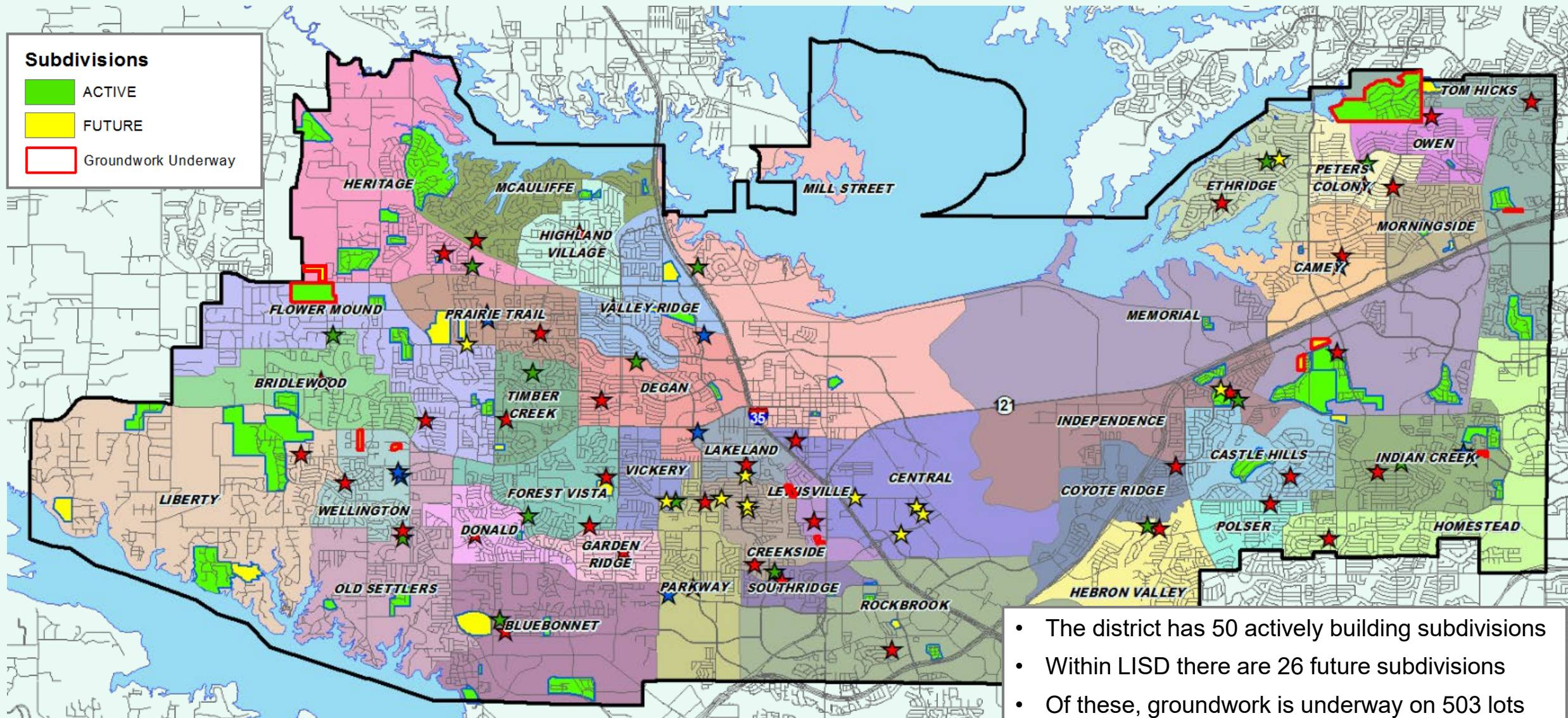




District Housing Overview

Subdivisions

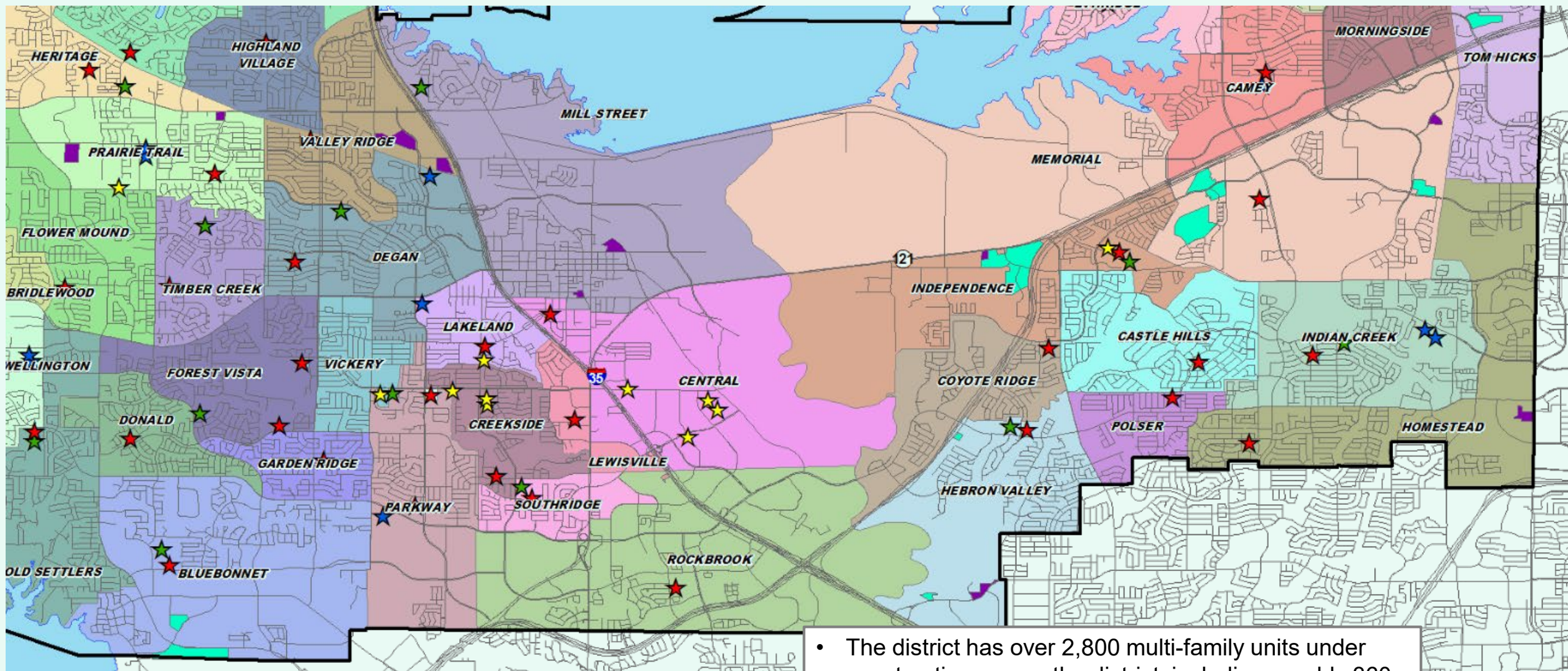
- ACTIVE
- FUTURE
- Groundwork Underway





- The district has 50 actively building subdivisions
- Within LISD there are 26 future subdivisions
- Of these, groundwork is underway on 503 lots within 12 subdivisions



District Multi-Family Overview



Multi-Family Developments

-  MF Under construction
-  Future Multi-Family

- The district has over 2,800 multi-family units under construction across the district, including roughly 360 senior living units
- Within LISD there are over 8,650 future multi-family units in the planning stages



Residential Activity

Oakbridge Crossing

- 127 total future lots
- Phases 1,2,3 record plats under review
- Toll Brothers Homes

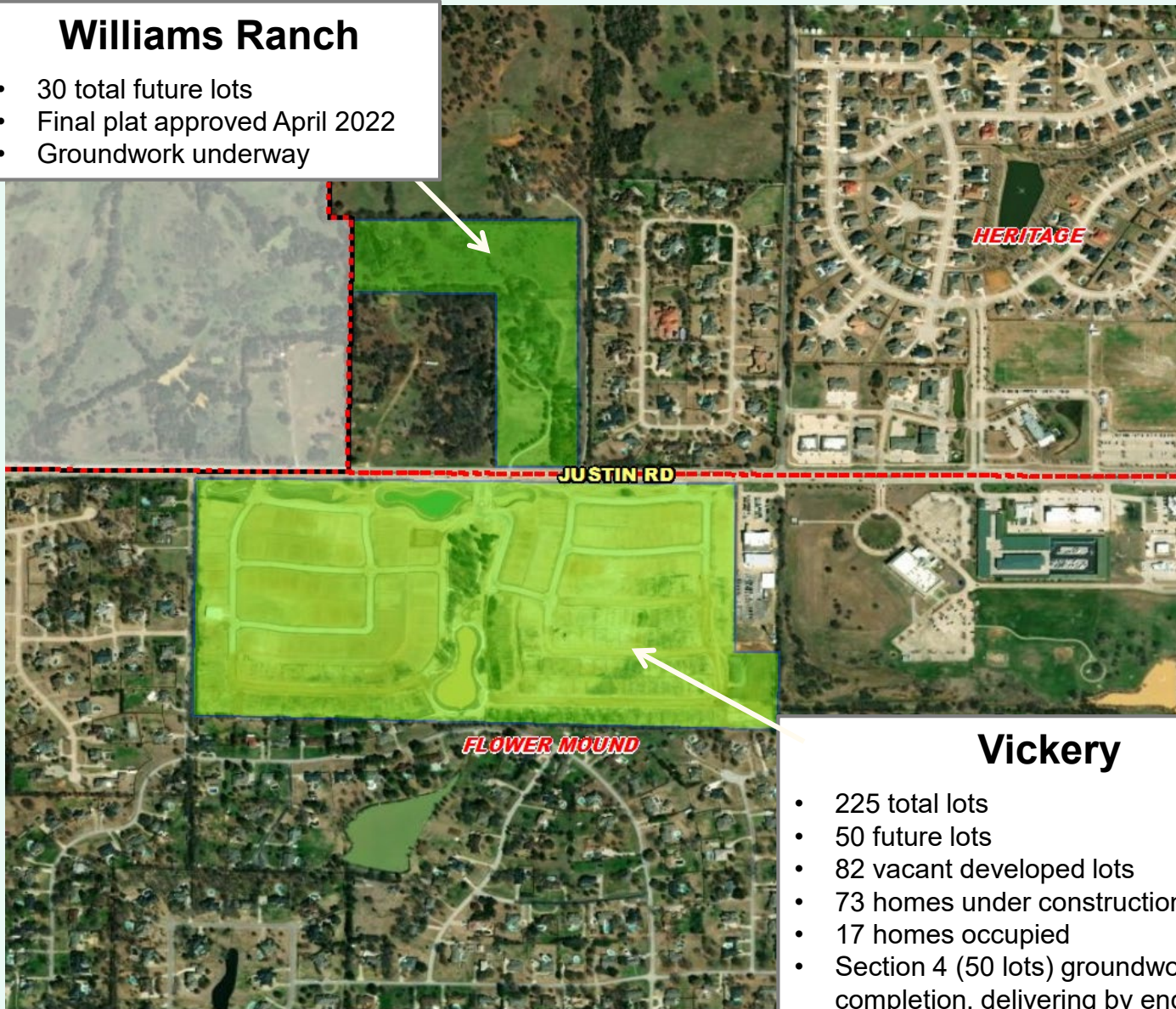




Residential Activity

Williams Ranch

- 30 total future lots
- Final plat approved April 2022
- Groundwork underway



Vickery

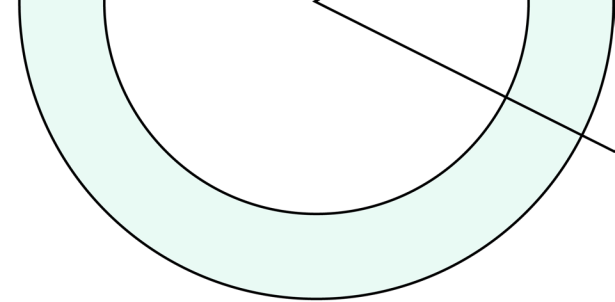
- 225 total lots
- 50 future lots
- 82 vacant developed lots
- 73 homes under construction
- 17 homes occupied
- Section 4 (50 lots) groundwork nearing completion, delivering by end 2022
- Building 50-100 homes per year
- Current student yield: 1.058

December 2022

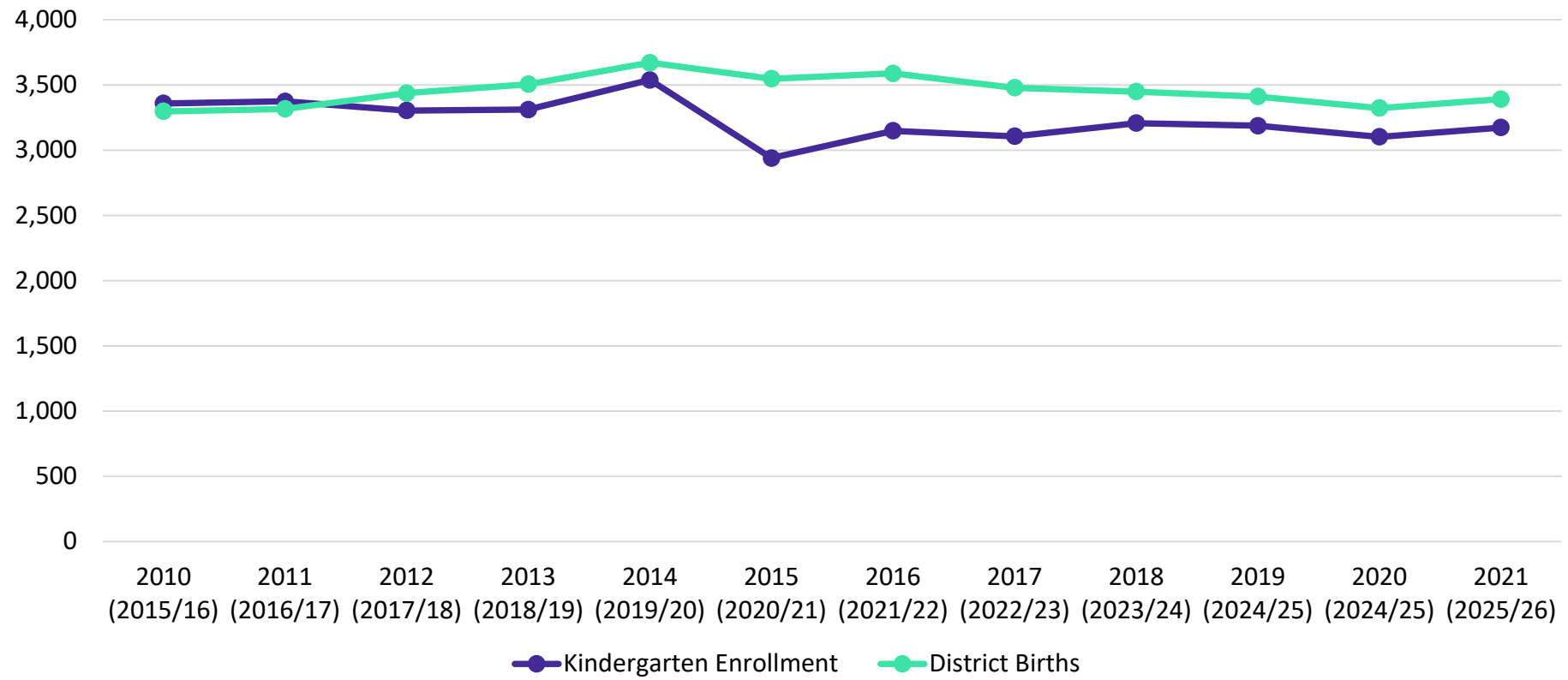




Birth Rate Analysis



Lewisville KG Enroll vs. District Births



	District Births	Kindergarten Enrollment	Ratio
2010 (2015/16)	3,297	3,358	1.019
2011 (2016/17)	3,316	3,374	1.017
2012 (2017/18)	3,437	3,304	0.961
2013 (2018/19)	3,505	3,311	0.945
2014 (2019/20)	3,670	3,538	0.964
2015 (2020/21)	3,547	2,939	0.829
2016 (2021/22)	3,588	3,148	0.877
2017 (2022/23)	3,478	3,106	0.893
2018 (2023/24)	3,449	3,207	0.930
2019 (2024/25)	3,411	3,187	0.934
2020 (2024/25)	3,323	3,102	0.933
2021 (2025/26)	3,391	3,173	0.936



Annual Enrollment Change

Year (OCT)	EE	PK	EE/PK	K	1st	2nd	3rd	4th	5th	6th	7th	8th	9th	10th	11th	12th	Totals	Total Growth	% Growth
2018/19	240	1,652	1,892	3,311	3,416	3,406	3,524	3,763	3,746	3,892	3,957	4,147	4,369	4,315	4,223	4,257	52,218		
2019/20	238	1,650	1,888	3,538	3,412	3,497	3,495	3,576	3,806	3,875	3,933	3,982	4,456	4,317	4,258	4,156	52,189	-29	-0.1%
2020/21	233	926	1,159	2,939	3,345	3,227	3,332	3,422	3,474	3,732	3,850	3,943	4,252	4,353	4,178	4,204	49,410	-2,779	-5.3%
2021/22	0	1,239	1,239	3,148	3,219	3,357	3,321	3,343	3,422	3,591	3,764	3,905	4,311	4,183	4,156	4,122	49,081	-329	-0.7%
2022/23	196	1,187	1,383	3,106	3,295	3,306	3,419	3,414	3,386	3,569	3,650	3,804	4,224	4,117	4,002	4,013	48,688	-393	-0.8%

*Yellow Box = largest grade per year
Green Box = second largest grade per year

	K	1st	2nd	3rd	4th	5th	6th	7th	8th	9th	10th	11th	12th	Elem	MS	HS
3 Year Avg.	0.963	1.029	0.992	1.000	1.003	0.995	1.019	1.006	1.009	1.081	0.972	0.960	0.980	0.997	1.011	0.998
2019/20	1.069	1.031	1.024	1.026	1.015	1.011	1.034	1.011	1.006	1.075	0.988	0.987	0.984	1.029	1.017	1.008
2020/21	0.831	0.945	0.946	0.953	0.979	0.971	0.981	0.994	1.003	1.068	0.977	0.968	0.987	0.938	0.992	1.000
2021/22	1.071	1.095	1.004	1.029	1.003	1.000	1.034	1.009	1.014	1.093	0.984	0.955	0.987	1.034	1.019	1.005
2022/23	0.987	1.047	1.027	1.018	1.028	1.013	1.043	1.016	1.011	1.082	0.955	0.957	0.966	1.020	1.023	0.990

- Lewisville ISD enrollment declined 393 students this fall
- The highest cohorts this fall came in 9th grade
- Rising cohorts in elementary school and middle school as students returned from the pandemic



Ten Year Forecast by Grade Level

Year (OCT)	EE	PK	EE/PK	K	1st	2nd	3rd	4th	5th	6th	7th	8th	9th	10th	11th	12th	Totals	Total Growth	% Growth
2018/19	240	1,652	1,892	3,311	3,416	3,406	3,524	3,763	3,746	3,892	3,957	4,147	4,369	4,315	4,223	4,257	52,218		
2019/20	238	1,650	1,888	3,538	3,412	3,497	3,495	3,576	3,806	3,875	3,933	3,982	4,456	4,317	4,258	4,156	52,189	-29	-0.1%
2020/21	233	926	1,159	2,939	3,345	3,227	3,332	3,422	3,474	3,732	3,850	3,943	4,252	4,353	4,178	4,204	49,410	-2,779	-5.3%
2021/22	0	1,239	1,239	3,148	3,219	3,357	3,321	3,343	3,422	3,591	3,764	3,905	4,311	4,183	4,156	4,122	49,081	-329	-0.7%
2022/23	196	1,187	1,383	3,106	3,295	3,306	3,419	3,414	3,386	3,569	3,650	3,804	4,224	4,117	4,002	4,013	48,688	-393	-0.8%
2023/24	196	1,164	1,360	3,207	3,202	3,357	3,382	3,466	3,485	3,455	3,601	3,689	4,037	4,114	3,985	3,926	48,266	-422	-0.9%
2024/25	196	1,164	1,360	3,187	3,331	3,256	3,422	3,428	3,535	3,562	3,473	3,649	3,924	3,940	3,981	3,896	47,944	-322	-0.7%
2025/26	196	1,147	1,343	3,102	3,297	3,387	3,309	3,475	3,472	3,608	3,590	3,509	3,867	3,821	3,824	3,906	47,510	-434	-0.9%
2026/27	196	1,158	1,354	3,173	3,204	3,353	3,446	3,348	3,529	3,545	3,640	3,627	3,724	3,774	3,707	3,748	47,172	-338	-0.7%
2027/28	196	1,153	1,349	3,164	3,281	3,252	3,408	3,487	3,395	3,595	3,571	3,678	3,849	3,632	3,659	3,630	46,950	-222	-0.5%
2028/29	196	1,150	1,346	3,191	3,267	3,341	3,306	3,454	3,535	3,467	3,624	3,609	3,900	3,754	3,524	3,585	46,903	-47	-0.1%
2029/30	196	1,154	1,350	3,194	3,303	3,328	3,408	3,350	3,513	3,607	3,494	3,660	3,831	3,805	3,638	3,453	46,934	31	0.1%
2030/31	196	1,156	1,352	3,208	3,305	3,365	3,396	3,453	3,407	3,583	3,636	3,531	3,888	3,732	3,690	3,563	47,109	175	0.4%
2031/32	196	1,154	1,350	3,206	3,317	3,368	3,430	3,445	3,509	3,474	3,610	3,672	3,751	3,785	3,618	3,616	47,151	42	0.1%
2032/33	196	1,154	1,350	3,214	3,317	3,379	3,433	3,479	3,509	3,578	3,500	3,646	3,899	3,653	3,672	3,545	47,174	23	0.0%

Yellow box = largest grade per year
Green box = second largest grade per year



Ten Year Forecast by Elementary Campus

CAMPUS	Functional Capacity	2020 Maximum Capacity	ENROLLMENT PROJECTIONS											
			2021/22	Fall 2022/23	2023/24	2024/25	2025/26	2026/27	2027/28	2028/29	2029/30	2030/31	2031/32	2032/33
BLUEBONNET ELEMENTARY	574	638	555	636	661	701	703	701	701	697	717	737	761	780
BRIDLEWOOD ELEMENTARY	792	880	543	570	596	616	613	599	611	596	579	571	567	567
CAMEY ELEMENTARY	693	770	502	489	460	468	486	499	533	562	593	618	647	671
CASTLE HILLS ELEMENTARY	673	748	693	705	692	665	640	652	632	633	627	629	635	633
CENTRAL ELEMENTARY	752	836	526	520	510	497	487	480	460	470	476	485	498	509
COYOTE RIDGE ELEMENTARY	733	814	532	532	532	544	517	507	511	505	510	508	511	518
CREEKSIDE ELEMENTARY	594	660	438	422	391	397	371	380	374	390	399	406	411	416
DEGAN ELEMENTARY	653	726	488	443	459	455	457	458	478	469	464	466	466	468
DONALD ELEMENTARY	792	880	591	567	562	564	556	538	545	545	547	549	553	559
ETHRIDGE ELEMENTARY	455	506	375	359	362	362	370	367	381	386	388	383	382	378
FLOWER MOUND ELEMENTARY	653	726	498	578	605	647	652	660	640	649	657	660	662	665
FOREST VISTA ELEMENTARY	871	968	532	573	576	597	593	602	604	598	589	583	580	571
GARDEN RIDGE ELEMENTARY	535	594	374	378	365	365	363	364	356	371	376	376	379	376
HEBRON VALLEY ELEMENTARY	752	836	425	411	397	367	370	372	360	372	375	382	385	385
HERITAGE ELEMENTARY	911	1,012	505	509	498	492	488	484	480	487	487	486	491	489
HICKS ELEMENTARY	713	792	594	618	616	602	579	570	570	574	577	583	595	602
HIGHLAND VILLAGE ELEMENTARY	515	572	353	360	358	350	335	342	337	340	336	340	346	350
HOMESTEAD ELEMENTARY	653	726	473	455	466	458	451	452	438	443	446	448	454	461
INDEPENDENCE ELEMENTARY	891	990	814	798	823	828	843	859	877	867	870	866	867	867
INDIAN CREEK ELEMENTARY	673	748	535	534	573	575	593	612	623	627	620	610	608	608
JACKSON EARLY ED. CENTER	810	900	422	469	469	469	469	469	469	469	469	469	469	469
LAKELAND ELEMENTARY	931	1,034	662	614	605	574	553	533	522	535	534	533	535	532

Green box = within 5% of maximum capacity
 Yellow box = exceeds 105% of maximum capacity



Ten Year Forecast by Elementary Campus- Cont'd

CAMPUS	Functional Capacity	2020 Maximum Capacity	ENROLLMENT PROJECTIONS											
			2021/22	Fall 2022/23	2023/24	2024/25	2025/26	2026/27	2027/28	2028/29	2029/30	2030/31	2031/32	2032/33
LEWISVILLE ELEMENTARY	772	858	534	508	510	520	515	523	512	520	524	521	522	520
LIBERTY ELEMENTARY	891	990	525	587	599	601	585	575	582	568	559	550	545	541
LLC ELEMENTARY SCHOOL	0		15	16	16	16	16	16	16	16	16	16	16	16
MCAULIFFE ELEMENTARY	554	616	547	539	538	529	529	528	527	529	523	525	532	533
MEMORIAL ELEMENTARY	720		467	630	713	784	829	867	896	885	873	868	861	853
MILL ST. ELEMENTARY	792	880	593	610	647	666	671	660	657	649	641	633	627	617
MORNINGSIDE ELEMENTARY	495	550	361	363	363	362	365	369	363	371	369	375	383	392
OLD SETTLERS ELEMENTARY	891	990	507	477	456	439	427	432	425	437	442	442	447	453
OWEN ELEMENTARY	693	770	265	263	249	257	249	251	252	254	255	258	261	263
PARKWAY ELEMENTARY	673	748	588	552	574	574	568	564	549	546	546	553	561	569
PETERS COLONY ELEMENTARY	733	814	531	533	526	504	485	486	481	494	505	510	517	520
POLSER ELEMENTARY	713	792	459	476	485	489	496	489	486	487	488	483	482	481
PRAIRIE TRAIL ELEMENTARY	871	968	633	643	634	633	644	649	626	636	633	633	633	627
ROCKBROOK ELEMENTARY	891	990	649	646	663	684	699	703	697	672	656	640	631	620
SOUTHRIDGE ELEMENTARY	634	704	563	623	627	619	624	608	602	610	602	602	606	602
TIMBER CREEK ELEMENTARY	515	572	457	430	439	422	410	408	401	410	413	418	425	427
VALLEY RIDGE ELEMENTARY	851	946	549	523	524	529	505	507	509	519	522	526	534	537
VICKERY ELEMENTARY	851	946	628	621	616	604	596	597	591	592	592	592	593	598
WELLINGTON ELEMENTARY	911	1,012	748	729	705	693	682	673	664	659	652	652	647	640
ELEMENTARY TOTALS	29,565	32,052	21,049	21,309	21,459	21,519	21,385	21,407	21,336	21,440	21,446	21,486	21,625	21,684
Elementary Total Change			151	260	150	60	-134	22	-71	104	6	40	139	59
Elementary Percent Change			0.72%	1.24%	0.70%	0.28%	-0.62%	0.10%	-0.33%	0.49%	0.03%	0.18%	0.65%	0.27%



Ten Year Forecast by Secondary Campus

CAMPUS	Functional Capacity	2020 Maximum Capacity	ENROLLMENT PROJECTIONS											
			2021/22	Fall 2022/23	2023/24	2024/25	2025/26	2026/27	2027/28	2028/29	2029/30	2030/31	2031/32	2032/33
ARBOR CREEK MIDDLE SCHOOL	945	1,050	867	890	861	869	864	897	873	858	876	886	883	877
BRIARHILL MIDDLE SCHOOL	1,035	1,150	823	798	786	775	774	759	752	723	741	724	727	716
CREEK VALLEY MIDDLE SCHOOL	990	1,100	638	593	574	580	567	577	565	553	533	527	536	540
DELAY MIDDLE SCHOOL	1,170	1,300	942	694	714	744	844	867	903	871	851	824	834	837
DOWNING MIDDLE SCHOOL	990	1,100	481	511	498	517	539	584	611	616	613	627	615	605
DURHAM MIDDLE SCHOOL	990	1,100	747	716	727	715	742	748	782	798	816	795	785	773
FORESTWOOD MIDDLE SCHOOL	1,260	1,400	873	890	901	887	884	906	910	906	891	900	896	899
GRIFFIN MIDDLE SCHOOL	1,200	1,250	753	756	742	738	774	799	822	835	865	879	879	871
HEDRICK MIDDLE SCHOOL	1,103	1,225	653	852	759	706	584	592	591	590	594	582	575	565
HUFFINES MIDDLE SCHOOL	945	1,050	733	675	603	639	660	656	627	602	600	609	616	610
KILLIAN MIDDLE SCHOOL	1,283	1,425	1,033	1,009	970	991	980	941	918	915	945	951	932	926
LAKEVIEW MIDDLE SCHOOL	891	990	468	425	411	385	367	374	353	374	379	419	435	455
LAMAR MIDDLE SCHOOL	968	1,075	724	756	747	722	719	735	777	761	758	712	719	725
MCKAMY MIDDLE SCHOOL	1,035	1,150	833	802	831	804	788	769	748	727	714	717	713	707
SHADOW RIDGE MIDDLE SCHOOL	900	1,000	631	647	612	603	612	599	603	562	576	589	602	609
LLC MIDDLE SCHOOL			61	9	9	9	9	9	9	9	9	9	9	9
MIDDLE SCHOOL TOTALS	15,705	17,365	11,260	11,023	10,745	10,684	10,707	10,812	10,844	10,700	10,761	10,750	10,756	10,724
Middle School Total Change			-265	-237	-278	-61	23	105	32	-144	61	-11	6	-32
Middle School Percent Change			-2.30%	-2.10%	-2.52%	-0.57%	0.22%	0.98%	0.30%	-1.33%	0.57%	-0.10%	0.06%	-0.30%



Ten Year Forecast by Secondary Campus

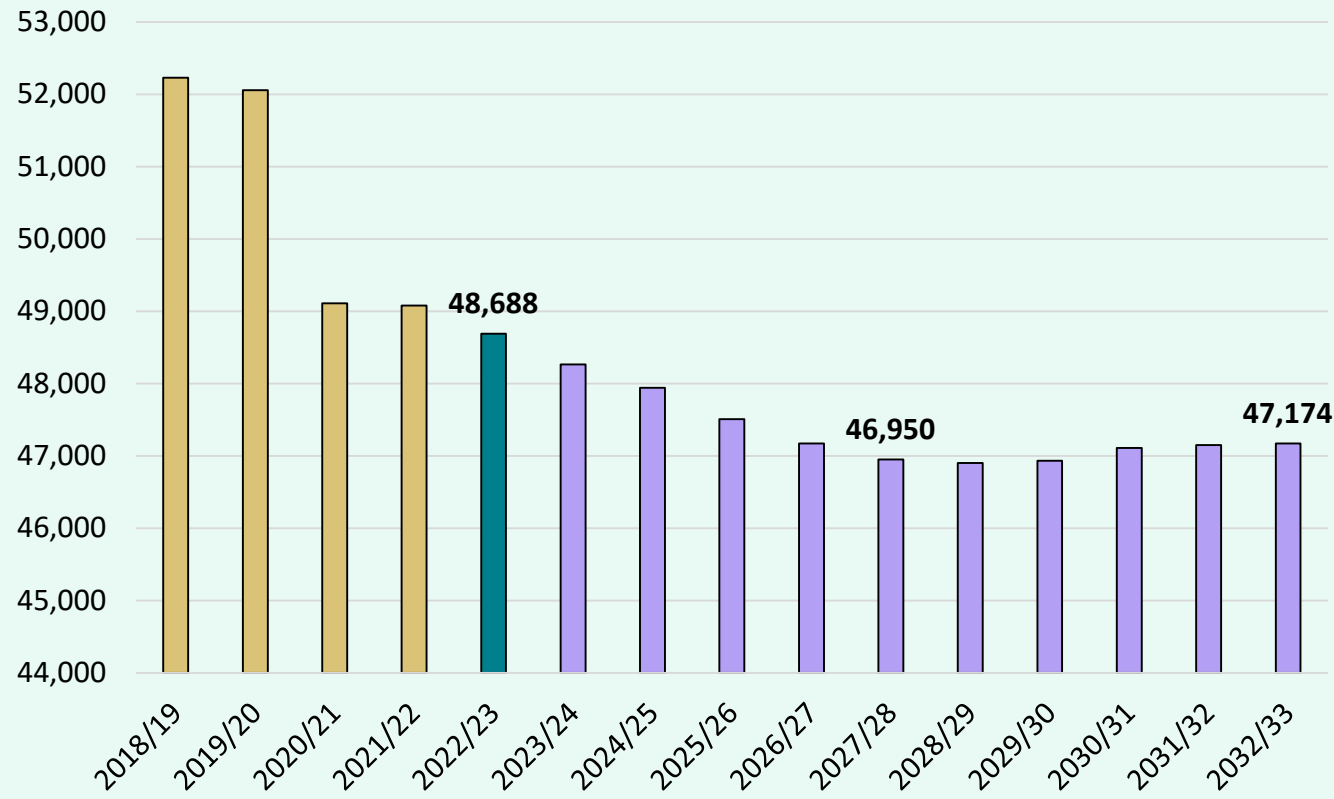
CAMPUS	Functional Capacity	2020 Maximum Capacity	ENROLLMENT PROJECTIONS											
			2021/22	Fall 2022/23	2023/24	2024/25	2025/26	2026/27	2027/28	2028/29	2029/30	2030/31	2031/32	2032/33
FLOWER MOUND 9th GRADE CAMPUS	705	783	839	853	800	832	830	806	776	825	792	759	757	778
HEBRON 9th GRADE CAMPUS	1,361	1,512	937	934	886	856	887	795	889	854	799	829	821	829
MARCUS 9th GRADE CAMPUS	753	837	734	740	724	729	727	688	710	749	737	775	708	749
FLOWER MOUND HIGH SCHOOL	3,402	3,780	2,764	2,681	2,603	2,479	2,461	2,433	2,440	2,384	2,379	2,365	2,348	2,281
HEBRON HIGH SCHOOL	3,208	3,564	2,721	2,739	2,734	2,725	2,671	2,630	2,534	2,572	2,541	2,538	2,483	2,452
LEWISVILLE HIGH SCHOOL	2,576	2,862	2,025	1,988	2,063	2,104	2,082	1,938	1,798	1,775	1,795	1,823	1,833	1,866
LEWISVILLE BEN HARMON HS	1,312	1,458	1,242	1,200	1,219	1,193	1,154	1,110	1,096	1,112	1,128	1,176	1,162	1,138
LEWISVILLE KILLOUGH	1,010	1,122	1,018	1,061	1,002	876	767	785	823	837	832	821	782	781
MARCUS HIGH SCHOOL	3,281	3,645	2,296	2,256	2,222	2,208	2,197	2,190	2,152	2,133	2,157	2,204	2,267	2,226
THE COLONY HIGH SCHOOL	2,989	3,321	2,023	1,892	1,798	1,727	1,630	1,566	1,540	1,510	1,555	1,571	1,597	1,657
LLC HIGH SCHOOL			173	12	12	12	12	12	12	12	12	12	12	12
HIGH SCHOOL TOTALS	20,597	22,884	16,772	16,356	16,063	15,741	15,418	14,953	14,770	14,763	14,727	14,873	14,770	14,769
High School Total Change			-212	-416	-293	-322	-323	-465	-183	-7	-36	146	-103	-1
High School Percent Change			-1.25%	-2.48%	-1.79%	-2.00%	-2.05%	-3.02%	-1.22%	-0.05%	-0.24%	0.99%	-0.69%	-0.01%
DENTON COUNTY JJ AEP	0	0	0	0	0	0	0	0	0	0	0	0	0	0
OTHER ALTERNATIVE	0	0	0	0	0	0	0	0	0	0	0	0	0	0
ALTERNATIVE CAMPUS TOTALS	0	0	0	0	0	0	0	0	0	0	0	0	0	0
DISTRICT TOTALS	65,867	72,301	49,081	48,688	48,267	47,944	47,510	47,172	46,950	46,903	46,934	47,109	47,151	47,177
District Total Change			-329	-393	-421	-323	-434	-338	-222	-47	31	175	42	26
District Percent Change			-0.67%	-0.80%	-0.86%	-0.67%	-0.90%	-0.71%	-0.47%	-0.10%	0.07%	0.37%	0.09%	0.05%

Green box = within 5% of maximum capacity
 Yellow box = exceeds 105% of maximum capacity



Key Takeaways

Enrollment Forecast



- LISD enrollment declined nearly 400 students this fall
- Rising interest rates have tempered demand, and new home starts have slowed in response
- There are roughly 950 homes currently in inventory with an additional 985 lots currently available to build on
- Groundwork is underway on roughly 500 lots across the district
- The district is forecasted to enroll nearly 47,000 students in 2027/28, and more than 47,100 students in 2032/33