

# Housing Analysis

Prepared for Lewisville ISD  
By Zonda Education



Dallas/Ft. Worth

3Q22

# Table of Contents

Area of Interest (Map)

Current Activity and Profile

Quarterly Activity and Inventory

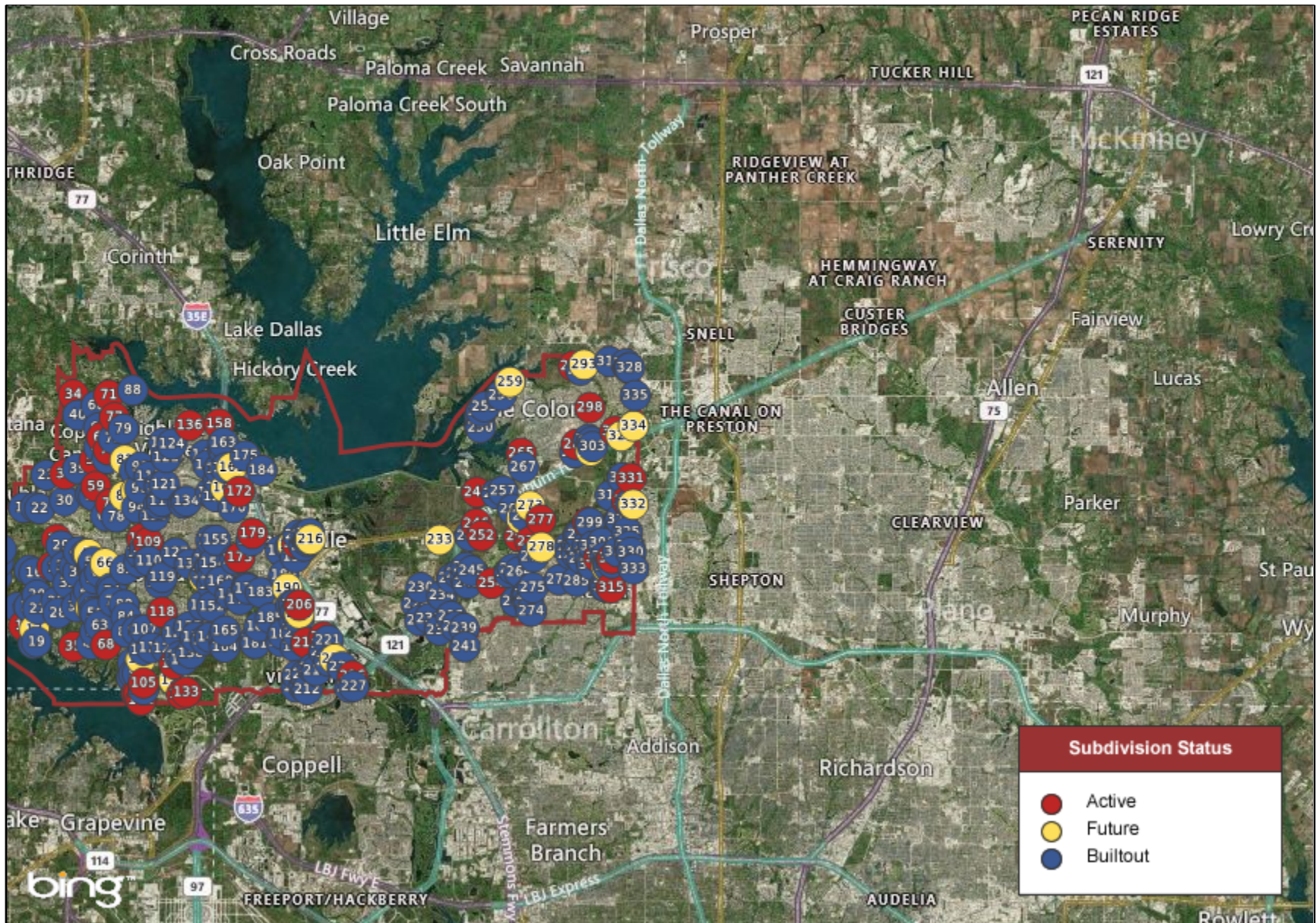
Historical Housing Activity

Price Range Analysis

Household Growth Summary

# Area of Interest

## Lewisville ISD



# Current Activity and Profile Report

## Lewisville ISD

Sorted by Subdivision

Map No	Subdivision Name	Sub Area	Status	Lot Size	Price Range	Qtr Starts	Ann Starts	Qtr Clos	Ann Clos	Occ	Inventory			VDL	Future	Total
											Mod	Fin Vac	U/C			
74	Adams Estates	DNW-FlwrMnd	BO 3Q17	83'-151'	\$500-\$899	0	0	0	0	29	0	0	0	0	0	29
285	Arbor Creek (Carrollton)	DNW-Carrlltn	BO 2Q01	50'-74'	\$103-\$217	0	0	0	0	313	0	0	0	0	0	313
325	Arbor Vista North	DNE-Plano	BO 4Q01	90'	\$360-\$700	0	0	0	0	38	0	0	0	0	0	38
113	Arborwood	DNW-FlwrMnd	BO 2Q03	75'-105'	\$228-\$299	0	0	0	0	70	0	0	0	0	0	70
159	Archer Addition	DNW-Lewisvl	BO 4Q20	41'	\$308-\$329	0	0	0	0	38	0	0	0	0	0	38
51	Auburn Farms	DNW-FlwrMnd	BO 4Q16	84'	\$770-\$800	0	0	0	0	16	0	0	0	0	0	16
288	Austin Hills	DNW-Carrlltn	BO 1Q18	50'	\$406-\$506	0	0	0	0	48	0	0	0	0	0	48
295	Austin Waters (Carrollton)	DNW-Carrlltn	Act 2Q07	53'	\$430-\$465	0	0	0	0	216	0	0	0	1	0	217
290	Austin Waters Townhomes	DNW-Carrlltn	BO 1Q21	30'-45'	\$286-\$485	0	0	0	0	97	0	0	0	0	0	97
275	Avondale (Carrollton)	DNW-Carrlltn	BO 3Q16	50'	\$358-\$435	0	0	0	0	65	0	0	0	0	0	65
138	Baker's Branch Estates	DNW-FlwrMnd	BO 1Q02	85'-117'	\$280-\$286	0	0	0	0	117	0	0	0	0	0	117
12	Bella Lago (Flower Mound)	DNW-FlwrMnd	BO 2Q15	150'-152'	\$800-\$1075	0	0	0	0	73	0	0	0	0	0	73
129	Bella Strada	DNW-FlwrMnd	BO 2Q16	43'-70'	\$426-\$562	0	0	0	0	46	0	0	0	0	0	46
153	Bellaire Addition	DNW-Lewisvl	BO 4Q00	65'	\$145-\$161	0	0	0	0	27	0	0	0	0	0	27
164	Belle Creek Village	DNW-FlwrMnd	BO 2Q13	83'	\$384-\$474	0	0	0	0	69	0	0	0	0	0	69
72	Bradford Park (Flower Mound)	DNW-FlwrMnd	Act 1Q19	50'-75'	\$735-\$830	3	37	10	35	118	1	0	25	12	0	156
298	Brentwood Court Townhomes	DNW-Colony	Act 1Q20	24'	\$410-\$439	13	13	6	11	16	0	0	7	20	0	43
41	Bridlewood	DNW-FlwrMnd	BO 3Q08	70'-208'	\$213-\$850	0	0	0	0	1,304	0	0	0	0	0	1,304
49	Brighton Place	DNW-FlwrMnd	BO 1Q21	149'	\$750-\$800	0	0	0	0	3	0	0	0	0	0	3
152	Brittian Estates	DNW-Lewisvl	BO 4Q03	100'	\$450-\$570	0	0	0	0	13	0	0	0	0	0	13
198	Brookside Addition	DNW-Lewisvl	BO 3Q16	50'	\$269-\$339	0	0	0	0	40	0	0	0	0	0	40
140	Brookstone Addition	DNW-FlwrMnd	BO 4Q03	80'	\$240-\$347	0	0	0	0	78	0	0	0	0	0	78
203	Brownstones on West Walters	DNW-Lewisvl	BO 3Q22	20'	\$400-\$450	0	0	8	8	19	0	0	0	0	0	19
107	Bryn Mar Estates	DNW-FlwrMnd	BO 4Q02	90'	\$330-\$366	0	0	0	0	74	0	0	0	0	0	74
284	Camey Place	DNW-Colony	Act 3Q22	45'	\$600-\$700	0	0	0	0	0	0	0	0	80	0	80
47	Camryn Downs	DNW-DOak	BO 4Q16	100'	\$750-\$800	0	0	0	0	8	0	0	0	0	0	8

# Current Activity and Profile Report

## Lewisville ISD

Sorted by Subdivision

Map No	Subdivision Name	Sub Area	Status	Lot Size	Price Range	Qtr Starts	Ann Starts	Qtr Clos	Ann Clos	Occ	Inventory			VDL	Future	Total
											Mod	Fin Vac	U/C			
50	Canterbury Row	DNW-FlwrMnd	BO 2Q10	100'	\$450-\$600	0	0	0	0	8	0	0	0	0	0	8
196	Carrington Village	DNW-Lewisvl	BO 2Q14	35'	\$199-\$273	0	0	0	0	183	0	0	0	0	0	183
301	Cascades at the Legends	DNW-Colony	BO 1Q10	50'-55'	\$149-\$194	0	0	0	0	108	0	0	0	0	0	108
303	Cascades at the Legends -	DNW-Colony	BO 1Q10	25'-33'	\$127-\$161	0	0	0	0	184	0	0	0	0	0	184
254	Castle Hills (Lewisville)	DNW-Lewisvl	Act 2Q98	40'-134'	\$435-\$2000	6	10	11	24	3,862	0	0	8	36	0	3,906
272	Castle Hills/Carrollton 10	DNW-Carrlltn	Act 4Q20	41'-80'	\$448-\$931	23	121	76	196	198	0	8	47	31	0	284
258	Castle Hills/Chateaux at the	DNW-Lewisvl	BO 2Q18	28'	\$390-\$455	0	0	0	0	19	0	0	0	0	0	19
266	Castle Hills/Discover Cottages	DNW-Lewisvl	Future	37'	\$0-\$0	0	0	0	0	0	0	0	0	0	57	57
263	Castle Hills/Northpointe	DNW-Lewisvl	Act 3Q19	41'-65'	\$448-\$816	22	24	3	7	103	3	0	22	129	0	257
268	Castle Hills/Northpointe	DNW-Lewisvl	BO 1Q22	36'	\$420-\$451	0	0	0	14	94	0	0	0	0	0	94
264	Castle Hills/Retreat	DNW-Lewisvl	BO 2Q14	42'	\$380-\$410	0	0	0	0	20	0	0	0	0	0	20
245	Castle Hills/Southwest	DNW-Carrlltn	BO 1Q21	41'-50'	\$377-\$603	0	0	0	0	313	0	0	0	0	0	313
261	Castle Hills/Village Townhomes	DNW-Lewisvl	BO 2Q07	25'	\$425-\$440	0	0	0	0	8	0	0	0	0	0	8
273	Castle Hills/Windhaven	DNW-Lewisvl	Future	35'	\$0-\$0	0	0	0	0	0	0	0	0	0	86	86
79	Castlewood (Highland Village)	DNW-HighVil	BO 4Q10	68'-120'	\$241-\$510	0	0	0	0	377	0	0	0	0	0	377
131	Cedar Creek Addition (Flower	DNW-FlwrMnd	BO 3Q06	50'	\$160-\$237	0	0	0	0	67	0	0	0	0	0	67
60	Chapel Creek Estates	DNW-CCanyon	BO 2Q00	200'	\$260-\$393	0	0	0	0	4	0	0	0	0	0	4
75	Chapel Hill Addition	DNW-HighVil	BO 4Q08	65'-85'	\$255-\$330	0	0	0	0	224	0	0	0	0	0	224
62	Chapel Springs (Highland	DNW-HighVil	BO 4Q14	65'-80'	\$326-\$500	0	0	0	0	119	0	0	0	0	0	119
310	Charles Ridge	DNW-Carrlltn	Future	24'	\$0-\$0	0	0	0	0	0	0	0	0	0	24	24
176	Chase Oaks Addition	DNW-Lewisvl	BO 1Q14	42'-53'	\$159-\$237	0	0	0	0	130	0	0	0	0	0	130
177	Chase Oaks Addition	DNW-Lewisvl	BO 1Q12	25'	\$174-\$231	0	0	0	0	13	0	0	0	0	0	13
10	Chateau du Lac	DNW-FlwrMnd	Act 3Q00	187'-240'	\$1250-\$3000	0	1	2	3	54	0	0	0	7	0	61
114	Chaucer Estates	DNW-FlwrMnd	BO 1Q00	68'-85'	\$206-\$254	0	0	0	0	170	0	0	0	0	0	170
1	Chimney Rock (Flower Mound)	DNW-FlwrMnd	BO 3Q14	150'	\$759-\$1350	0	0	0	0	49	0	0	0	0	0	49
83	Churchill Crossing	DNW-FlwrMnd	BO 1Q00	70'-100'	\$171-\$230	0	0	0	0	195	0	0	0	0	0	195

# Current Activity and Profile Report

## Lewisville ISD

Sorted by Subdivision

Map No	Subdivision Name	Sub Area	Status	Lot Size	Price Range	Qtr Starts	Ann Starts	Qtr Clos	Ann Clos	Occ	Inventory			VDL	Future	Total
											Mod	Fin Vac	U/C			
14	CMP Family Addition	DNW-FlwrMnd	BO 2Q20	307'	\$2000-\$4000	0	0	0	0	3	0	0	0	0	0	3
199	Coppell Greens	DNW-Coppell	BO 2Q03	48'-65'	\$184-\$237	0	0	0	0	222	0	0	0	0	0	222
40	Copper Woods	DNW-CCanyon	BO 2Q08	458'	\$420-\$905	0	0	0	0	14	0	0	0	0	0	14
158	Copperas Branch Addition	DNW-HighVil	Act 3Q03	80'	\$300-\$450	0	0	0	0	2	0	0	0	9	0	11
90	Country Meadow Addition	DNW-FlwrMnd	BO 3Q01	50'	\$152-\$197	0	0	0	0	156	0	0	0	0	0	156
230	Coyote Ridge	DNW-Carrltn	BO 3Q06	80'	\$296-\$570	0	0	0	0	358	0	0	0	0	0	358
228	Coyote Ridge/Grandview Ridge	DNW-Carrltn	BO 2Q03	60'	\$273-\$400	0	0	0	0	79	0	0	0	0	0	79
307	Creeside Addn. (Carrollton)	DNW-Carrltn	BO 1Q07	80'	\$400-\$480	0	0	0	0	116	0	0	0	0	0	116
299	Creeside at Austin Waters	DNW-Colony	BO 1Q20	50'-60'	\$427-\$606	0	0	0	0	204	0	0	0	0	0	204
148	Creeside at Heritage Park	DNW-FlwrMnd	BO 1Q22	80'	\$780-\$960	0	0	0	4	136	0	0	0	0	0	136
178	Crescent Estates Addition	DNW-Lewisvl	BO 2Q19	50'	\$355-\$455	0	0	0	0	62	0	0	0	0	0	62
11	Cross Timbers (Dbl Oak)	DNW-DOak	BO 2Q08	150'-165'	\$189-\$330	0	0	0	0	228	0	0	0	0	0	228
171	CT Simmons Addition	DNW-Lewisvl	BO 2Q05	38'	\$105-\$135	0	0	0	0	4	0	0	0	0	0	4
64	Diamond Belle Estates	DNW-FlwrMnd	BO 4Q10	80'	\$400-\$750	0	0	0	0	14	0	0	0	0	0	14
311	Diamond Creek Addition	DNW-Carrltn	BO 2Q19	146'	\$550-\$700	0	0	0	0	6	0	0	0	0	0	6
154	Diamond Hill (Lewisville)	DNW-Lewisvl	BO 2Q00	50'	\$121-\$137	0	0	0	0	151	0	0	0	0	0	151
279	Diamond Ridge	DNW-Carrltn	BO 1Q01	61'	\$107-\$190	0	0	0	0	275	0	0	0	0	0	275
99	District of Highland Village	DNW-HighVil	BO 3Q14	40'	\$282-\$355	0	0	0	0	12	0	0	0	0	0	12
91	Dixon Estates	DNW-FlwrMnd	Future	94'	\$0-\$0	0	0	0	0	0	0	0	0	0	51	51
25	Dominion Estates (Flower	DNW-FlwrMnd	BO 2Q00	150'	\$455-\$499	0	0	0	0	14	0	0	0	0	0	14
186	Dougherty Addition	DNW-Lewisvl	BO 4Q21	21'	\$300-\$400	0	0	0	2	6	0	0	0	0	0	6
142	Dove Creek (Lewisville)	DNW-Lewisvl	BO 2Q08	132'	\$300-\$600	0	0	0	0	10	0	0	0	0	0	10
139	Edgewood (Flower Mound)	DNW-FlwrMnd	BO 2Q20	65'	\$650-\$685	0	0	0	0	47	0	0	0	0	0	47
21	Emerald Bay	DNW-FlwrMnd	BO 2Q05	180'	\$610-\$650	0	0	0	0	62	0	0	0	0	0	62
141	Emerald Place	DNW-FlwrMnd	Future	80'	\$0-\$0	0	0	0	0	0	0	0	0	0	54	54
280	Essex Park Townhomes	DNW-Carrltn	BO 2Q22	45'	\$512-\$554	0	1	0	20	84	0	0	0	0	0	84

# Current Activity and Profile Report

## Lewisville ISD

Sorted by Subdivision

Map No	Subdivision Name	Sub Area	Status	Lot Size	Price Range	Qtr Starts	Ann Starts	Qtr Clos	Ann Clos	Occ	Inventory			VDL	Future	Total
											Mod	Fin Vac	U/C			
54	Estancia Estates	DNW-FlwrMnd	BO 4Q19	80'	\$475-\$616	0	0	0	0	53	0	0	0	0	0	53
39	Estates @ Copper Canyon, The	DNW-CCanyon	BO 2Q08	190'	\$750-\$950	0	0	0	0	26	0	0	0	0	0	26
227	Estates at Lake Vista	DNW-Coppell	BO 3Q15	52'	\$327-\$410	0	0	0	0	39	0	0	0	0	0	39
23	Estates of Double Oak	DNW-DOak	BO 2Q04	150'	\$410-\$500	0	0	0	0	46	0	0	0	0	0	46
89	Estates of Flower Mound	DNW-FlwrMnd	BO 1Q02	80'	\$244-\$293	0	0	0	0	64	0	0	0	0	0	64
236	Estates of Indian Creek	DNW-Carrltn	BO 3Q16	50'	\$365-\$424	0	0	0	0	45	0	0	0	0	0	45
17	Estuary Pointe	DNW-FlwrMnd	Future	150'	\$0-\$0	0	0	0	0	0	0	0	0	0	27	27
291	Fairwater	DNE-Frisco	BO 2Q20	65'	\$664-\$685	0	0	0	0	95	0	0	0	0	0	95
144	Fallbrook	DNW-FlwrMnd	BO 1Q04	80'	\$275-\$290	0	0	0	0	77	0	0	0	0	0	77
143	Flower Mound Oaks	DNW-FlwrMnd	BO 1Q15	80'	\$454-\$512	0	0	0	0	56	0	0	0	0	0	56
52	Flower Mound Woods	DNW-FlwrMnd	BO 4Q12	109'	\$442-\$506	0	0	0	0	44	0	0	0	0	0	44
84	Forest Park Estates	DNW-FlwrMnd	BO 2Q00	65'	\$150-\$200	0	0	0	0	106	0	0	0	0	0	106
118	Forest Vista Estates	DNW-FlwrMnd	Act 3Q09	85'	\$550-\$700	0	1	0	0	11	0	0	1	0	0	12
97	Forums Residential, The	DNW-FlwrMnd	BO 4Q08	95'	\$223-\$245	0	0	0	0	71	0	0	0	0	0	71
194	Fox Creek Estates	DNW-Lewisvl	BO 2Q01	63'-70'	\$154-\$195	0	0	0	0	155	0	0	0	0	0	155
123	Foxborough Hollow	DNW-FlwrMnd	BO 2Q00	90'	\$260-\$265	0	0	0	0	72	0	0	0	0	0	72
321	Frisco 45 Townhomes	DNE-Frisco	Future	19'	\$0-\$0	0	0	0	0	0	0	0	0	0	29	29
155	Garden Park Place	DNW-Lewisvl	BO 1Q04	53'	\$132-\$183	0	0	0	0	99	0	0	0	0	0	99
157	Garden Ridge Addition	DNW-Lewisvl	BO 2Q01	40'-50'	\$115-\$120	0	0	0	0	302	0	0	0	0	0	302
259	Garza Lake Estates (The	DNW-Colony	Future	55'	\$0-\$0	0	0	0	0	0	0	0	0	0	4	4
317	Gates of Prestonwood	DNW-Carrltn	Act 4Q02	80'	\$600-\$1000	0	0	0	1	61	0	0	0	1	0	62
44	Grace Park	DNW-FlwrMnd	Future	87'-100'	\$0-\$0	0	0	0	0	0	0	0	0	0	20	20
115	Grand Park Estates	DNW-FlwrMnd	BO 4Q07	80'	\$310-\$406	0	0	0	0	99	0	0	0	0	0	99
166	Great Lakes Crossing	DNW-Lewisvl	Future	50'	\$0-\$0	0	0	0	0	0	0	0	0	0	30	30
173	Greenvalley Addition	DNW-Lewisvl	Act 4Q20	20'	\$300-\$400	0	1	0	0	6	0	0	1	3	0	10
241	Greenway Park	DNW-Carrltn	BO 2Q03	65'-80'	\$178-\$397	0	0	0	0	392	0	0	0	0	0	392

# Current Activity and Profile Report

## Lewisville ISD

Sorted by Subdivision

Map No	Subdivision Name	Sub Area	Status	Lot Size	Price Range	Qtr Starts	Ann Starts	Qtr Clos	Ann Clos	Occ	Inventory			VDL	Future	Total
											Mod	Fin Vac	U/C			
287	Hamilton Park	DNW-Carrltn	BO 3Q21	45'	\$422-\$422	0	0	0	0	103	0	0	0	0	0	103
209	Harris Street Townhomes	DNW-Lewisvl	BO 4Q21	30'	\$300-\$300	0	4	0	4	4	0	0	0	0	0	4
117	Hawthorne	DNW-FlwrMnd	BO 2Q16	70'	\$435-\$532	0	0	0	0	52	0	0	0	0	0	52
116	Hearthstone @ Firewheel	DNW-FlwrMnd	BO 3Q05	50'	\$147-\$180	0	0	0	0	47	0	0	0	0	0	47
168	Hedrick Estates	DNW-Lewisvl	BO 1Q01	50'	\$134-\$140	0	0	0	0	118	0	0	0	0	0	118
202	Heritage Hill (Lewisville)	DNW-Lewisvl	BO 2Q07	35'	\$145-\$164	0	0	0	0	80	0	0	0	0	0	80
197	Heritage Square Addition	DNW-Lewisvl	BO 4Q09	35'	\$140-\$180	0	0	0	0	23	0	0	0	0	0	23
172	Heritage Trails Addition	DNW-Lewisvl	Act 1Q21	24'-32'	\$379-\$474	17	160	27	137	137	7	0	93	12	0	249
126	Heritage West	DNW-FlwrMnd	Act 4Q21	70'	\$1000-\$1200	0	29	0	0	0	0	0	29	1	0	30
94	Hickory Springs at Flower	DNW-FlwrMnd	BO 4Q07	94'	\$322-\$382	0	0	0	0	48	0	0	0	0	0	48
34	Hidden Creek Estates (Copper	DNW-CCanyon	Act 2Q08	250'	\$850-\$1000	0	0	0	0	9	0	0	0	6	0	15
237	Hidden Island	DNW-Carrltn	BO 3Q06	65'	\$210-\$280	0	0	0	0	52	0	0	0	0	0	52
8	Hidden Valley Estates	DNW-FlwrMnd	BO 2Q08	100'-224'	\$160-\$550	0	0	0	0	159	0	0	0	0	0	159
2	High Meadow (Flower Mound)	DNW-FlwrMnd	BO 4Q20	120'	\$700-\$963	0	0	0	0	15	0	0	0	0	0	15
78	Highland Court	DNW-FlwrMnd	BO 1Q21	50'-70'	\$471-\$656	0	0	0	0	97	0	0	0	0	0	97
163	Highland Lakes (Lewisville)	DNW-Lewisvl	BO 2Q01	60'-61'	\$200-\$235	0	0	0	0	139	0	0	0	0	0	139
70	Highland Oaks (Highland	DNW-HighVil	Act 1Q09	95'	\$729-\$754	0	1	0	0	39	0	0	1	0	0	40
77	Highland Shores	DNW-HighVil	Act 2Q84	60'-110'	\$235-\$750	0	1	0	0	1,832	0	0	1	3	0	1,836
212	Highland Terraces (Lewisville)	DNW-Lewisvl	BO 4Q21	36'	\$366-\$391	0	0	0	1	32	0	0	0	0	0	32
146	Highlands/The (Lewisville)	DNW-Lewisvl	BO 2Q07	70'-100'	\$95-\$274	0	0	0	0	450	0	0	0	0	0	450
201	Highpoint Oaks Est. Addition	DNW-Lewisvl	BO 4Q18	50'	\$336-\$540	0	0	0	0	86	0	0	0	0	0	86
327	Hills @ Prestonwood V	DNE-Plano	BO 4Q01	75'-90'	\$346-\$545	0	0	0	0	69	0	0	0	0	0	69
330	Hills @ Prestonwood VI/Bluffs,	DNE-Plano	BO 4Q00	50'	\$309-\$370	0	0	0	0	41	0	0	0	0	0	41
319	Hills @ Prestonwood	DNE-Plano	BO 2Q01	75'-90'	\$242-\$401	0	0	0	0	102	0	0	0	0	0	102
316	Hills @ Prestonwood VIII	DNE-Plano	BO 3Q02	50'	\$285-\$550	0	0	0	0	149	0	0	0	0	0	149
238	Hills at Indian Creek	DNW-Carrltn	BO 4Q15	52'-62'	\$315-\$447	0	0	0	0	118	0	0	0	0	0	118



# Current Activity and Profile Report

## Lewisville ISD

Sorted by Subdivision

Map No	Subdivision Name	Sub Area	Status	Lot Size	Price Range	Qtr Starts	Ann Starts	Qtr Clos	Ann Clos	Occ	Inventory			VDL	Future	Total
											Mod	Fin Vac	U/C			
282	Hills of Kingswood, The	DNE-Frisco	Act 1Q09	65'-150'	\$1460-\$4500	8	38	11	45	285	1	5	35	54	232	612
333	Hills of Preston Creek, The	DNE-Plano	BO 2Q01	75'-100'	\$450-\$470	0	0	0	0	142	0	0	0	0	0	142
217	Hills of Vista Ridge	DNW-Lewisvl	BO 4Q17	50'	\$336-\$421	0	0	0	0	124	0	0	0	0	0	124
5	Hillside of Flower Mound	DNW-FlwrMnd	Act 2Q18	110'	\$700-\$1200	0	6	1	6	11	0	0	3	13	0	27
274	Homestead @ Carrollton	DNW-Carrlltn	BO 2Q08	55'-127'	\$192-\$600	0	0	0	0	459	0	0	0	0	0	459
119	Hunter's Glen (Flower Mound)	DNW-FlwrMnd	BO 4Q18	85'	\$539-\$680	0	0	0	0	70	0	0	0	0	0	70
175	Hunters Glen (Lewisville)	DNW-Lewisvl	BO 3Q00	40'	\$60-\$144	0	0	0	0	277	0	0	0	0	0	277
4	Immel Estates	DNW-FlwrMnd	BO 3Q04	200'-216'	\$549-\$563	0	0	0	0	58	0	0	0	0	0	58
276	Indian Creek Meadows Estates	DNW-Carrlltn	BO 2Q03	50'	\$147-\$190	0	0	0	0	70	0	0	0	0	0	70
232	Indian Creek/Cedar Elm Estates	DNW-Carrlltn	BO 2Q01	65'-80'	\$160-\$229	0	0	0	0	91	0	0	0	0	0	91
231	Indian Creek/Elm Wood Trail	DNW-Carrlltn	BO 4Q01	65'-73'	\$173-\$229	0	0	0	0	271	0	0	0	0	0	271
235	Indian Creek/Indian Pointe	DNW-Carrlltn	BO 4Q02	65'	\$188-\$243	0	0	0	0	192	0	0	0	0	0	192
229	Indian Creek/Oakwood Springs	DNW-Carrlltn	BO 2Q01	65'	\$168-\$197	0	0	0	0	280	0	0	0	0	0	280
214	Kathryn Commons Addn	DNW-Lewisvl	BO 2Q12	17'	\$140-\$180	0	0	0	0	5	0	0	0	0	0	5
16	Kensington Park Estates	DNW-FlwrMnd	BO 4Q01	290'	\$900-\$950	0	0	0	0	5	0	0	0	0	0	5
305	Kensington Place	DNW-Carrlltn	Act 4Q21	50'-70'	\$632-\$1065	27	42	0	0	0	3	0	39	54	0	96
324	Kings Gate (Plano)	DNE-Plano	Act 1Q96	162'	\$1900-\$6500	0	2	0	0	43	0	0	3	2	0	48
255	Kings Grant Addition	DNW-Lewisvl	BO 1Q15	53'-55'	\$399-\$409	0	0	0	0	85	0	0	0	0	0	85
314	Kings Ridge Addition	DNE-Plano	BO 2Q17	50'-90'	\$269-\$1380	0	0	0	0	577	0	0	0	0	0	577
61	Ladera Highland Village	DNW-HighVil	BO 3Q21	42'	\$358-\$469	0	0	0	0	102	0	0	0	0	0	102
76	Lake Forest Estates	DNW-FlwrMnd	BO 1Q02	75'-77'	\$230-\$276	0	0	0	0	334	0	0	0	0	0	334
7	Lake Hill Estates	DNW-FlwrMnd	BO 2Q01	145'	\$300-\$305	0	0	0	0	58	0	0	0	0	0	58
98	Lakemont Addition	DNW-FlwrMnd	BO 3Q05	95'	\$289-\$315	0	0	0	0	76	0	0	0	0	0	76
247	Lakeridge Townhomes	DNW-Lewisvl	Act 2Q06	22'	\$256-\$270	0	0	0	0	131	0	0	0	1	0	132
313	Lakes Legacy/Heritage Lakes	DNE-Frisco	BO 2Q07	50'-70'	\$212-\$412	0	0	0	0	590	0	0	0	0	0	590
328	Lakes Legacy/Lakehill	DNE-Frisco	BO 3Q03	65'-78'	\$284-\$423	0	0	0	0	261	0	0	0	0	0	261

# Current Activity and Profile Report

## Lewisville ISD

Sorted by Subdivision

Map No	Subdivision Name	Sub Area	Status	Lot Size	Price Range	Qtr Starts	Ann Starts	Qtr Clos	Ann Clos	Occ	Inventory			VDL	Future	Total
											Mod	Fin Vac	U/C			
326	Lakes Legacy/The Lakes	DNE-Frisco	BO 1Q12	77'	\$525-\$1250	0	0	0	0	140	0	0	0	0	0	140
323	Lakes Legacy/The Villas	DNE-Frisco	BO 4Q15	55'	\$269-\$725	0	0	0	0	102	0	0	0	0	0	102
104	Lakeside Center Townhomes	DNW-FlwrMnd	BO 2Q22	27'	\$500-\$600	0	0	0	8	8	0	0	0	0	0	8
169	Lakeside Crossing	DNW-Lewisvl	Future	25'	\$0-\$0	0	0	0	0	0	0	0	0	0	202	202
105	Lakeside Crossing Townhomes	DNW-FlwrMnd	Act 3Q20	32'	\$660-\$765	0	0	0	0	5	0	0	4	6	0	15
86	Lakeside DFW (Flower Mound)	DNW-FlwrMnd	BO 4Q17	30'-65'	\$382-\$976	0	0	0	0	254	0	0	0	0	0	254
92	Lakeside Tower	DNW-FlwrMnd	Act 2Q19		\$1152-\$3854	0	0	1	2	45	0	3	0	0	0	48
102	Lakeside Village	DNW-FlwrMnd	Act 4Q21	40'	\$1000-\$1250	0	0	0	0	0	0	0	0	57	0	57
96	Lakeside Villas	DNW-FlwrMnd	Act 1Q22	35'	\$650-\$750	0	7	0	0	0	0	0	7	0	0	7
125	Lakewood (Flower Mound)	DNW-FlwrMnd	Future	31'-50'	\$0-\$0	0	0	0	0	0	0	0	0	0	164	164
88	Lakewood Addition (Highland	DNW-HighVil	BO 1Q00	150'	\$270-\$350	0	0	0	0	17	0	0	0	0	0	17
277	Lakewood Hills Addition	DNW-Lewisvl	Act 4Q17	50'-80'	\$400-\$825	33	112	15	63	306	3	0	95	112	0	516
9	Landing @ Northshore, The	DNW-FlwrMnd	BO 4Q18	240'-283'	\$920-\$2800	0	0	0	0	49	0	0	0	0	0	49
193	Larry Ho Addition	DNW-Lewisvl	Future	21'	\$0-\$0	0	0	0	0	0	0	0	0	0	4	4
296	Legends, The (Colony)	DNW-Colony	BO 4Q06	40'-80'	\$136-\$252	0	0	0	0	1,758	0	0	0	0	0	1,758
59	Legends, The (Flower Mound)	DNW-FlwrMnd	Act 1Q15	50'	\$418-\$445	0	0	0	0	90	0	0	0	1	0	91
145	Lexington Glen	DNW-FlwrMnd	BO 2Q06	40'	\$149-\$179	0	0	0	0	90	0	0	0	0	0	90
26	Liberty Park	DNW-FlwrMnd	BO 4Q21	70'	\$600-\$900	0	0	0	1	9	0	0	0	0	0	9
223	MacArthur & 121	DNW-Lewisvl	Future	25'	\$0-\$0	0	0	0	0	0	0	0	0	0	18	18
132	Magnolia Court	DNW-FlwrMnd	BO 4Q21	80'	\$623-\$725	0	0	0	16	29	0	0	0	0	0	29
31	Magnolia Park (Flower Mound)	DNW-FlwrMnd	BO 4Q18	85'	\$693-\$800	0	0	0	0	26	0	0	0	0	0	26
213	Main Street Village	DNW-Lewisvl	BO 1Q08	22'	\$139-\$158	0	0	0	0	141	0	0	0	0	0	141
135	Mallard Cove Estates	DNW-FlwrMnd	BO 3Q08	84'	\$210-\$320	0	0	0	0	3	0	0	0	0	0	3
211	Manors at Forestbrook Addition	DNW-Lewisvl	Act 4Q18	26'	\$335-\$390	8	19	0	13	38	4	0	37	32	0	111
224	Manors at Vista Ridge I	DNW-Lewisvl	BO 1Q19	28'	\$320-\$360	0	0	0	0	72	0	0	0	0	0	72
162	Meadow Lake	DNW-Lewisvl	BO 4Q01	65'	\$100-\$160	0	0	0	0	434	0	0	0	0	0	434

# Current Activity and Profile Report

## Lewisville ISD

Sorted by Subdivision

Map No	Subdivision Name	Sub Area	Status	Lot Size	Price Range	Qtr Starts	Ann Starts	Qtr Clos	Ann Clos	Occ	Inventory			VDL	Future	Total
											Mod	Fin Vac	U/C			
257	Meridian (Lewisville)	DNW-Lewisvl	BO 1Q10	53'-80'	\$201-\$391	0	0	0	0	390	0	0	0	0	0	390
184	Midway Park Addition	DNW-Lewisvl	BO 3Q05	50'	\$80-\$100	0	0	0	0	6	0	0	0	0	0	6
191	Milton Street Townhomes	DNW-Lewisvl	BO 2Q08	25'	\$140-\$210	0	0	0	0	3	0	0	0	0	0	3
262	Moore Farm	DNW-Carrlltn	BO 1Q08	50'-70'	\$202-\$650	0	0	0	0	385	0	0	0	0	0	385
292	Mustang Park	DNW-Carrlltn	BO 2Q18	50'-80'	\$340-\$632	0	0	0	0	389	0	0	0	0	0	389
302	Mustang Park Townhomes	DNW-Carrlltn	BO 4Q18	22'-35'	\$302-\$380	0	0	0	0	177	0	0	0	0	0	177
297	Mustang Park/Latera	DNW-Carrlltn	BO 4Q20	45'	\$382-\$422	0	0	0	0	55	0	0	0	0	0	55
233	Myers Ridge	DNW-Lewisvl	Future	40'-50'	\$0-\$0	0	0	0	0	0	0	0	0	0	318	318
331	Normandy Estates	DNE-Plano	Act 4Q08	60'-110'	\$1250-\$2680	0	5	2	11	125	0	0	1	0	0	126
322	Normandy Estates Townhomes	DNE-Plano	BO 4Q16	40'	\$430-\$470	0	0	0	0	3	0	0	0	0	0	3
179	Normandy Village	DNW-Lewisvl	Act 4Q19	25'	\$509-\$527	41	48	0	6	22	1	0	59	0	0	82
189	North Shore Villas	DNW-Lewisvl	BO 3Q13	50'-52'	\$144-\$195	0	0	0	0	15	0	0	0	0	0	15
183	Oak Creek Estates (Lewisville)	DNW-Lewisvl	BO 2Q01	100'	\$150-\$155	0	0	0	0	61	0	0	0	0	0	61
137	Oak Park Addn (Flwr Mnd)	DNW-FlwrMnd	BO 2Q00	60'	\$135-\$165	0	0	0	0	113	0	0	0	0	0	113
219	Oakbend Estates (Lewisville)	DNW-Lewisvl	Act 1Q21	30'	\$450-\$550	0	10	0	11	14	0	0	6	7	0	27
106	Oakbridge at Flower Mound	DNW-FlwrMnd	BO 3Q22	90'	\$916-\$959	0	1	1	18	95	0	0	0	0	0	95
101	Oakbridge Crossing	DNW-FlwrMnd	Future	80'	\$0-\$0	0	0	0	0	0	0	0	0	0	127	127
160	Oaks of Bellaire	DNW-Lewisvl	BO 1Q01	70'-75'	\$117-\$178	0	0	0	0	95	0	0	0	0	0	95
124	Oaks of Highland Village	DNW-HighVil	BO 2Q00	80'	\$200-\$250	0	0	0	0	64	0	0	0	0	0	64
192	Oaks of the Southwest	DNW-Lewisvl	BO 4Q04	25'	\$160-\$175	0	0	0	0	54	0	0	0	0	0	54
127	One Place	DNW-FlwrMnd	BO 2Q00	40'	\$93-\$110	0	0	0	0	63	0	0	0	0	0	63
165	Orchard Flower	DNW-FlwrMnd	BO 3Q21	50'-60'	\$433-\$587	0	0	0	0	98	0	0	0	0	0	98
170	Orchard Valley Estates	DNW-Lewisvl	BO 4Q00	50'-55'	\$158-\$160	0	0	0	0	379	0	0	0	0	0	379
206	Park Central Terraces	DNW-Lewisvl	Act 2Q20	35'	\$352-\$367	0	1	6	19	23	0	0	8	0	0	31
278	Parker Crossing	DNW-Carrlltn	Future	41'	\$0-\$0	0	0	0	0	0	0	0	0	0	61	61
306	Parker Estates (Plano)	DNE-Plano	BO 3Q06	25'-35'	\$140-\$205	0	0	0	0	419	0	0	0	0	0	419

# Current Activity and Profile Report

## Lewisville ISD

Sorted by Subdivision

Map No	Subdivision Name	Sub Area	Status	Lot Size	Price Range	Qtr Starts	Ann Starts	Qtr Clos	Ann Clos	Occ	Inventory			VDL	Future	Total
											Mod	Fin Vac	U/C			
252	Parker Place (Lewisville)	DNW-Lewisvl	Act 4Q21	40'	\$619-\$700	7	17	0	0	0	2	0	15	113	0	130
320	Parks at Austin Ranch	DNW-Colony	BO 1Q07	25'	\$250-\$255	0	0	0	0	8	0	0	0	0	0	8
87	Parkside at Woodlake	DNW-FlwrMnd	BO 2Q18	50'	\$455-\$515	0	0	0	0	45	0	0	0	0	0	45
147	Pebble Ridge Estates	DNW-Lewisvl	BO 3Q02	60'	\$171-\$183	0	0	0	0	87	0	0	0	0	0	87
67	Pecan Meadows Addition	DNW-FlwrMnd	BO 4Q01	106'	\$272-\$315	0	0	0	0	68	0	0	0	0	0	68
28	Peninsula @ Twin Cove, The	DNW-FlwrMnd	BO 1Q01	120'-200'	\$250-\$570	0	0	0	0	93	0	0	0	0	0	93
19	Point Noble	DNW-FlwrMnd	BO 2Q10	156'	\$899-\$1600	0	0	0	0	52	0	0	0	0	0	52
80	Preserve at Flower Mound	DNW-FlwrMnd	BO 2Q18	81'	\$574-\$765	0	0	0	0	84	0	0	0	0	0	84
207	Preserve at Vista Ridge	DNW-Lewisvl	BO 3Q15	28'	\$269-\$270	0	0	0	0	27	0	0	0	0	0	27
15	Prince Estates	DNW-FlwrMnd	BO 4Q01	147'	\$450-\$1000	0	0	0	0	3	0	0	0	0	0	3
270	Quail Creek North	DNW-Carrlltn	BO 4Q13	25'-35'	\$196-\$310	0	0	0	0	147	0	0	0	0	0	147
269	Quail Creek North Townhomes	DNW-Carrlltn	BO 2Q11	25'	\$176-\$182	0	0	0	0	66	0	0	0	0	0	66
271	Quail Creek Townhomes	DNW-Carrlltn	BO 3Q06	25'-35'	\$184-\$226	0	0	0	0	165	0	0	0	0	0	165
46	Red Hawk Addition	DNW-FlwrMnd	Future	40'	\$0-\$0	0	0	0	0	0	0	0	0	0	4	4
43	Regency Park Addition (Flower	DNW-FlwrMnd	BO 2Q18	110'-118'	\$469-\$875	0	0	0	0	56	0	0	0	0	0	56
65	Reserve at Chapel Hill	DNW-HighVil	Act 2Q21	65'-89'	\$767-\$882	2	43	12	25	25	1	0	35	11	0	72
128	Reserve at Creekside	DNW-FlwrMnd	BO 4Q02	100'	\$430-\$449	0	0	0	0	38	0	0	0	0	0	38
174	Reserve at Timber Creek, The	DNW-Lewisvl	BO 3Q03	75'	\$220-\$227	0	0	0	0	166	0	0	0	0	0	166
289	Reserve on Parker (Carrollton)	DNW-Carrlltn	BO 2Q20	45'	\$407-\$414	0	0	0	0	106	0	0	0	0	0	106
286	Reserve on Parker Townhomes	DNW-Carrlltn	BO 2Q20	25'	\$331-\$360	0	0	0	0	63	0	0	0	0	0	63
242	Ridge at Indian Creek	DNW-Carrlltn	BO 4Q20	50'	\$420-\$504	0	0	0	0	64	0	0	0	0	0	64
267	Ridgepointe	DNW-Colony	BO 4Q03	50'-70'	\$110-\$281	0	0	0	0	563	0	0	0	0	0	563
156	Ridgeview Estates (Lewisville)	DNW-Lewisvl	BO 4Q05	61'	\$175-\$241	0	0	0	0	77	0	0	0	0	0	77
13	River Oaks Estates	DNW-FlwrMnd	BO 4Q06	150'	\$690-\$730	0	0	0	0	131	0	0	0	0	0	131
109	River Walk/Central Park Villas	DNW-FlwrMnd	Act 2Q15	40'	\$644-\$669	1	9	2	8	78	1	0	18	0	0	97
103	River Walk/Lakeshore Terrace	DNW-FlwrMnd	Act 1Q18	22'-40'	\$489-\$650	0	0	1	7	27	0	0	8	48	0	83

# Current Activity and Profile Report

## Lewisville ISD

Sorted by Subdivision

Map No	Subdivision Name	Sub Area	Status	Lot Size	Price Range	Qtr Starts	Ann Starts	Qtr Clos	Ann Clos	Occ	Inventory			VDL	Future	Total
											Mod	Fin Vac	U/C			
100	River Walk/Parkmont Place	DNW-FlwrMnd	BO 4Q20	30'	\$403-\$471	0	0	0	0	52	0	0	0	0	0	52
110	River Walk/Pinnacle	DNW-FlwrMnd	BO 2Q21	25'	\$329-\$339	0	0	0	0	55	0	0	0	0	0	55
108	River Walk/Riverside Point	DNW-FlwrMnd	BO 4Q20	25'	\$383-\$386	0	0	0	0	72	0	0	0	0	0	72
293	Rock Creek Townhomes	DNE-Frisco	Future	25'	\$0-\$0	0	0	0	0	0	0	0	0	0	92	92
221	Rockbrook Place Addition	DNW-Lewisvl	BO 2Q13	26'	\$180-\$186	0	0	0	0	153	0	0	0	0	0	153
37	Rockhaven Estates	DNW-FlwrMnd	BO 4Q21	150'	\$700-\$1200	0	0	0	1	11	0	0	0	0	0	11
69	Rolling Hills Estates (Highland	DNW-HighVil	BO 2Q06	65'	\$221-\$370	0	0	0	0	163	0	0	0	0	0	163
122	Rosalie Estates	DNW-HighVil	BO 4Q00	130'	\$150-\$279	0	0	0	0	5	0	0	0	0	0	5
29	Saddle Oaks Addition	DNW-FlwrMnd	BO 2Q07	150'	\$570-\$600	0	0	0	0	45	0	0	0	0	0	45
281	Saddle Ridge (Carrollton)	DNW-Carrltn	BO 2Q21	45'	\$400-\$443	0	0	0	0	86	0	0	0	0	0	86
27	Saddlewood (Flower Mound)	DNW-FlwrMnd	Act 4Q15	120'	\$989-\$1046	0	2	1	4	45	0	0	2	2	0	49
150	Samuel Place	DNW-Lewisvl	BO 2Q07	65'	\$175-\$220	0	0	0	0	27	0	0	0	0	0	27
63	Sanctuary at Flower Mound	DNW-FlwrMnd	BO 3Q08	100'	\$449-\$598	0	0	0	0	89	0	0	0	0	0	89
3	Serenity (Flower Mound)	DNW-FlwrMnd	Future	80'	\$0-\$0	0	0	0	0	0	0	0	0	0	18	18
222	Settler's Village Townhomes	DNW-Lewisvl	BO 1Q15	20'	\$209-\$217	0	0	0	0	228	0	0	0	0	0	228
6	Shiloh Ranch Estates	DNW-FlwrMnd	BO 2Q03	280'	\$173-\$178	0	0	0	0	33	0	0	0	0	0	33
329	Shoal Creek	DNE-Plano	BO 2Q10	50'-100'	\$268-\$2000	0	0	0	0	312	0	0	0	0	0	312
309	Shops at Prestonwood, The	DNW-Carrltn	BO 2Q19	22'-28'	\$269-\$560	0	0	0	0	188	0	0	0	0	0	188
22	Simple Oaks Estates	DNW-DOak	BO 2Q17	176'	\$200-\$500	0	0	0	0	3	0	0	0	0	0	3
260	Sojourn at the Realm Condos	DNW-Lewisvl	BO 1Q22		\$299-\$407	0	0	0	23	80	0	0	0	0	0	80
200	South Village Addition	DNW-Lewisvl	Act 4Q17	44'	\$329-\$380	0	6	0	21	58	0	0	4	1	0	63
187	Southridge Addition (Lewisville)	DNW-Lewisvl	BO 2Q00	60'-61'	\$146-\$189	0	0	0	0	187	0	0	0	0	0	187
215	Sparkman Estates	DNW-Lewisvl	BO 2Q08	30'	\$235-\$240	0	0	0	0	2	0	0	0	0	0	2
71	St. James Place	DNW-HighVil	Act 3Q09	65'	\$255-\$330	0	2	0	2	12	0	0	1	0	0	13
56	Stafford Estates	DNW-FlwrMnd	BO 2Q00	75'-85'	\$226-\$311	0	0	0	0	248	0	0	0	0	0	248
250	Stewart Peninsula/Cottonwood	DNW-Colony	BO 1Q04	55'	\$142-\$280	0	0	0	0	246	0	0	0	0	0	246

# Current Activity and Profile Report

## Lewisville ISD

Sorted by Subdivision

Map No	Subdivision Name	Sub Area	Status	Lot Size	Price Range	Qtr Starts	Ann Starts	Qtr Clos	Ann Clos	Occ	Inventory			VDL	Future	Total
											Mod	Fin Vac	U/C			
248	Stewart Peninsula/Cypress	DNW-Colony	BO 4Q09	50'-60'	\$285-\$423	0	0	0	0	172	0	0	0	0	0	172
251	Stewart Peninsula/Heights, The	DNW-Colony	BO 3Q03	55'-65'	\$163-\$209	0	0	0	0	120	0	0	0	0	0	120
249	Stewart Peninsula/Northshore	DNW-Colony	BO 2Q10	55'-85'	\$400-\$769	0	0	0	0	94	0	0	0	0	0	94
253	Stewart Peninsula/The Cedars	DNW-Colony	BO 4Q02	55'-62'	\$143-\$189	0	0	0	0	43	0	0	0	0	0	43
121	Stone Hill Farm	DNW-FlwrMnd	BO 3Q02	70'-84'	\$181-\$247	0	0	0	0	553	0	0	0	0	0	553
335	Stonebriar	DNE-Frisco	BO 1Q11	50'-110'	\$250-\$2700	0	0	0	0	624	0	0	0	0	0	624
318	Stonebriar Country Club Est.	DNE-Frisco	Act 2Q01	90'	\$849-\$1900	0	0	0	0	91	0	0	0	4	0	95
134	Suncrest @ Flower Mound	DNW-FlwrMnd	BO 4Q13	55'-80'	\$240-\$398	0	0	0	0	102	0	0	0	0	0	102
35	Sunset Point at Twin Coves	DNW-FlwrMnd	Act 4Q21	80'	\$1100-\$1300	5	8	0	0	0	0	0	8	10	0	18
95	Surrey Lane Addition	DNW-FlwrMnd	BO 4Q16	90'	\$700-\$800	0	0	0	0	3	0	0	0	0	0	3
120	Tequesta	DNW-HighVil	BO 3Q22	60'	\$499-\$556	0	1	2	3	11	0	0	0	0	0	11
55	Terracina (Flower Mound)	DNW-FlwrMnd	Act 3Q12	100'	\$695-\$771	0	0	0	2	167	0	0	0	1	0	168
334	The Corvalla at Stonebriar	DNE-Frisco	Future		\$525-\$2000	0	0	0	4	69	0	0	0	0	52	121
68	Three Bridges Estates	DNW-FlwrMnd	Act 2Q05	258'	\$800-\$1000	0	0	0	0	14	0	0	0	2	0	16
185	Timber Creek Park Estates	DNW-Lewisvl	BO 4Q01	61'	\$112-\$160	0	0	0	0	63	0	0	0	0	0	63
205	Timber Creek Willows	DNW-Lewisvl	Future	25'	\$0-\$0	0	0	0	0	0	0	0	0	0	31	31
195	Timber Hill Addition	DNW-Lewisvl	BO 3Q00	53'	\$135-\$185	0	0	0	0	84	0	0	0	0	0	84
188	Timber Valley Estates	DNW-Lewisvl	BO 2Q00	40'-67'	\$90-\$128	0	0	0	0	100	0	0	0	0	0	100
161	Tinley Park	DNW-FlwrMnd	BO 3Q22	50'	\$635-\$635	0	4	1	24	35	0	0	0	0	0	35
24	Town Lake at Flower Mound	DNW-FlwrMnd	Act 1Q17	100'-120'	\$1417-\$1627	7	30	9	26	118	1	0	26	16	67	228
93	Towne View Estates	DNW-FlwrMnd	BO 2Q02	80'-97'	\$260-\$322	0	0	0	0	144	0	0	0	0	0	144
204	Townhomes @ Continental	DNW-Lewisvl	BO 4Q17	24'	\$158-\$220	0	0	0	0	90	0	0	0	0	0	90
218	Townhomes of Vista Ridge	DNW-Lewisvl	BO 2Q10	25'	\$179-\$189	0	0	0	0	37	0	0	0	0	0	37
66	Traditions of Flower Mound	DNW-FlwrMnd	Future	107'	\$0-\$0	0	0	0	0	0	0	0	0	0	9	9
294	Trails at Arbor Hill	DNW-Carrltn	BO 4Q20	50'	\$394-\$595	0	0	0	0	68	0	0	0	0	0	68
216	Trinity Townhomes (Lewisville)	DNW-Lewisvl	Future	17'	\$0-\$0	0	0	0	0	0	0	0	0	0	8	8

# Current Activity and Profile Report

## Lewisville ISD

Sorted by Subdivision

Map No	Subdivision Name	Sub Area	Status	Lot Size	Price Range	Qtr Starts	Ann Starts	Qtr Clos	Ann Clos	Occ	Inventory			VDL	Future	Total
											Mod	Fin Vac	U/C			
30	Twin Lakes Estates	DNW-DOak	BO 3Q03	100'	\$400-\$500	0	0	0	0	70	0	0	0	0	0	70
208	Uptown Village	DNW-Lewisvl	BO 3Q21	23'	\$199-\$330	0	0	0	0	70	0	0	0	0	0	70
182	Valley View Addition	DNW-Lewisvl	BO 2Q01	65'	\$94-\$175	0	0	0	0	92	0	0	0	0	0	92
180	Valley Vista Estates	DNW-Lewisvl	BO 2Q00	66'-100'	\$118-\$225	0	0	0	0	618	0	0	0	0	0	618
332	Vassar Court	DNW-Colony	Future	30'	\$0-\$0	0	0	0	0	0	0	0	0	22	22	
167	Verona Addition (Lewisville)	DNW-Lewisvl	BO 4Q17	50'	\$306-\$348	0	0	0	0	138	0	0	0	0	138	
32	Vickery	DNW-CCanyon	Act 1Q21	62'-100'	\$790-\$1416	15	76	11	17	17	3	0	73	82	50	225
53	Vilamoura	DNW-FlwrMnd	BO 4Q17	72'	\$600-\$800	0	0	0	0	28	0	0	0	0	28	
312	Village at Prestonwood	DNE-Plano	BO 2Q11	40'-50'	\$200-\$241	0	0	0	0	132	0	0	0	0	132	
283	Village at the Pointe	DNW-Colony	BO 3Q20	26'	\$360-\$360	0	0	0	0	77	0	0	0	0	77	
300	Village Townhomes	DNW-Colony	Future	30'	\$0-\$0	0	0	0	0	0	0	0	0	74	74	
239	Villages of Indian Creek	DNW-Carrlltn	BO 1Q03	40'-50'	\$130-\$165	0	0	0	0	563	0	0	0	0	563	
85	Villages of Northshore, The	DNW-FlwrMnd	BO 3Q00	68'-94'	\$232-\$260	0	0	0	0	330	0	0	0	0	330	
240	Villas at Indian Creek	DNW-Carrlltn	BO 4Q13	40'	\$250-\$289	0	0	0	0	33	0	0	0	0	33	
225	Villas at Lake Vista Townhomes	DNW-Coppell	BO 2Q14	30'	\$260-\$333	0	0	0	0	93	0	0	0	0	93	
304	Villas at Parker	DNW-Carrlltn	BO 4Q20	45'	\$379-\$400	0	0	0	0	100	0	0	0	0	100	
130	Villas at Southgate (Flower	DNW-FlwrMnd	Act 3Q18	30'	\$510-\$549	0	17	8	25	136	0	0	10	0	146	
133	Villas at Southgate Townhomes	DNW-FlwrMnd	Act 3Q18	22'	\$462-\$588	11	63	16	31	159	1	0	56	8	224	
190	Villas of Bellaire Addition	DNW-Lewisvl	Future	26'	\$0-\$0	0	0	0	0	0	0	0	0	102	102	
243	Villas of Indian Creek	DNW-Carrlltn	BO 1Q11	60'-80'	\$234-\$489	0	0	0	0	353	0	0	0	0	353	
234	Villas of Indian Creek TH'S	DNW-Carrlltn	BO 1Q15	22'	\$227-\$256	0	0	0	0	204	0	0	0	0	204	
315	Villas of Prestonwood	DNW-Carrlltn	Act 1Q17	28'	\$451-\$498	4	43	8	73	177	0	0	17	0	194	
226	Vista del Lago Addition TH	DNW-Lewisvl	Act 3Q19	22'	\$438-\$497	0	43	17	37	101	1	0	37	9	148	
220	Vista Ridge Brownstones	DNW-Lewisvl	BO 2Q17	24'	\$215-\$260	0	0	0	0	105	0	0	0	0	105	
181	Vista Villas Addition	DNW-Lewisvl	BO 3Q20	50'	\$326-\$393	0	0	0	0	46	0	0	0	0	46	
73	Walnut Grove Addition	DNW-FlwrMnd	BO 4Q08	46'	\$290-\$300	0	0	0	0	13	0	0	0	0	13	

# Current Activity and Profile Report

## Lewisville ISD

Sorted by Subdivision

Map No	Subdivision Name	Sub Area	Status	Lot Size	Price Range	Qtr Starts	Ann Starts	Qtr Clos	Ann Clos	Occ	Inventory			VDL	Future	Total
											Mod	Fin Vac	U/C			
308	Warmington Meadows	DNW-Carrltn	BO 2Q14	80'	\$386-\$709	0	0	0	0	68	0	0	0	0	0	68
111	Waterford Park Estates (Flower	DNW-FlwrMnd	BO 3Q15	70'-114'	\$299-\$445	0	0	0	0	191	0	0	0	0	0	191
256	Waters Edge, The	DNW-Colony	BO 4Q09	60'	\$475-\$900	0	0	0	0	15	0	0	0	0	0	15
45	Wellington Manor (Flower	DNW-FlwrMnd	BO 2Q14	80'	\$469-\$554	0	0	0	0	31	0	0	0	0	0	31
36	Wellington/Brandywine @	DNW-FlwrMnd	BO 4Q04	95'	\$395-\$439	0	0	0	0	39	0	0	0	0	0	39
38	Wellington/Estates, The	DNW-FlwrMnd	BO 3Q07	50'-71'	\$228-\$364	0	0	0	0	759	0	0	0	0	0	759
42	Wellington/Hillcrest	DNW-FlwrMnd	BO 1Q04	75'-106'	\$340-\$374	0	0	0	0	260	0	0	0	0	0	260
57	Wellington/Wetherstone	DNW-FlwrMnd	BO 2Q04	50'-70'	\$134-\$335	0	0	0	0	976	0	0	0	0	0	976
149	Wentworth Villas Estates	DNW-Lewisvl	BO 2Q10	40'	\$185-\$205	0	0	0	0	60	0	0	0	0	0	60
18	West Oaks	DNW-DOak	BO 2Q17	160'	\$400-\$3000	0	0	0	0	16	0	0	0	0	0	16
265	Westport Lakeview Villas	DNW-Colony	Act 1Q19	25'	\$970-\$980	0	10	4	14	23	0	0	10	0	0	33
112	Whisper Creek	DNW-FlwrMnd	BO 2Q16	93'	\$615-\$830	0	0	0	0	31	0	0	0	0	0	31
151	Whispering Oaks (Lewisville)	DNW-Lewisvl	BO 4Q00	50'-70'	\$102-\$172	0	0	0	0	209	0	0	0	0	0	209
82	Whitestone Village (Highland	DNW-HighVil	Future	30'	\$0-\$0	0	0	0	0	0	0	0	0	0	60	60
81	Whyburn	DNW-FlwrMnd	Future	80'	\$0-\$0	0	0	0	0	0	0	0	0	0	105	105
33	Wichita Chase	DNW-FlwrMnd	BO 2Q06	90'-140'	\$356-\$465	0	0	0	0	297	0	0	0	0	0	297
20	Wichita Creek Estates	DNW-FlwrMnd	BO 2Q01	160'-165'	\$460-\$650	0	0	0	0	105	0	0	0	0	0	105
136	Wichita Estates	DNW-HighVil	Act 1Q16	80'	\$535-\$637	0	1	0	0	37	0	0	1	1	0	39
210	Willowbrook Addition	DNW-Lewisvl	BO 2Q19	50'	\$368-\$446	0	0	0	0	75	0	0	0	0	0	75
246	Windhaven Crossing	DNW-Lewisvl	Act 1Q17	22'	\$335-\$435	0	60	0	10	260	1	0	60	42	0	363
58	Woods @ Wellington, The	DNW-FlwrMnd	BO 4Q02	80'	\$340-\$380	0	0	0	0	70	0	0	0	0	0	70
48	Wright Estates	DNW-FlwrMnd	BO 3Q08	223'	\$559-\$590	0	0	0	0	16	0	0	0	0	0	16
244	Wyndale Meadows Addition	DNW-Lewisvl	BO 3Q20	50'-65'	\$383-\$505	0	0	0	0	231	0	0	0	0	0	231
<b>Selection Totals</b>						253	1130	272	1,043	43,748	34	16	913	1,040	2,202	47,953



# Quarterly Activity & Inventory Report

## Lewisville ISD

Sorted By Subdivision

Subdivision Name (Map No)	Sub Area	Price Range	Lot Size	Status	3Q20	4Q20	1Q21	2Q21	3Q21	4Q21	1Q22	2Q22	3Q22	Ann. Rates/ *Inv. Supply	
<b>Adams Estates (74)</b> \$500-\$899 83'-151'	DNW-FlwrMnd BO 3Q17	Starts			0	0	0	0	0	0	0	0	0	0	
		Closings			0	0	0	0	0	0	0	0	0	0	0
		Housing Inv			0	0	0	0	0	0	0	0	0	0	0.0
		VDL Inv			0	0	0	0	0	0	0	0	0	0	0.0
<b>Arbor Creek (Carroll (285))</b> \$103-\$217 50'-74'	DNW-Carrltn BO 2Q01	Starts			0	0	0	0	0	0	0	0	0	0	
		Closings			0	0	0	0	0	0	0	0	0	0	0
		Housing Inv			0	0	0	0	0	0	0	0	0	0	0.0
		VDL Inv			0	0	0	0	0	0	0	0	0	0	0.0
<b>Arbor Vista North (325)</b> \$360-\$700 90'	DNE-Plano BO 4Q01	Starts			0	0	0	0	0	0	0	0	0	0	
		Closings			0	0	0	0	0	0	0	0	0	0	0
		Housing Inv			0	0	0	0	0	0	0	0	0	0	0.0
		VDL Inv			0	0	0	0	0	0	0	0	0	0	0.0
<b>Arborwood (113)</b> \$228-\$299 75'-105'	DNW-FlwrMnd BO 2Q03	Starts			0	0	0	0	0	0	0	0	0	0	
		Closings			0	0	0	0	0	0	0	0	0	0	0
		Housing Inv			0	0	0	0	0	0	0	0	0	0	0.0
		VDL Inv			0	0	0	0	0	0	0	0	0	0	0.0
<b>Archer Addition (159)</b> \$308-\$329 41'	DNW-Lewisvl BO 4Q20	Starts			0	0	0	0	0	0	0	0	0	0	
		Closings			0	5	0	0	0	0	0	0	0	0	0
		Housing Inv			5	0	0	0	0	0	0	0	0	0	0.0
		VDL Inv			0	0	0	0	0	0	0	0	0	0	0.0
<b>Auburn Farms (51)</b> \$770-\$800 84'	DNW-FlwrMnd BO 4Q16	Starts			0	0	0	0	0	0	0	0	0	0	
		Closings			0	0	0	0	0	0	0	0	0	0	0
		Housing Inv			0	0	0	0	0	0	0	0	0	0	0.0
		VDL Inv			0	0	0	0	0	0	0	0	0	0	0.0
<b>Austin Hills (288)</b> \$406-\$506 50'	DNW-Carrltn BO 1Q18	Starts			0	0	0	0	0	0	0	0	0	0	
		Closings			0	0	0	0	0	0	0	0	0	0	0
		Housing Inv			0	0	0	0	0	0	0	0	0	0	0.0
		VDL Inv			0	0	0	0	0	0	0	0	0	0	0.0
<b>Austin Waters (Carro (295))</b> \$430-\$465 53' Darling Homes	DNW-Carrltn Act 2Q07	Starts			0	0	0	0	0	0	0	0	0	0	
		Closings			0	0	0	0	0	0	0	0	0	0	0
		Housing Inv			0	0	0	0	0	0	0	0	0	0	0.0
		VDL Inv			1	1	1	1	1	1	1	1	1	1	n/a
<b>Austin Waters Townho (290)</b> \$286-\$485 30'-45'	DNW-Carrltn BO 1Q21	Starts			0	0	0	0	0	0	0	0	0	0	
		Closings			0	1	1	0	0	0	0	0	0	0	0
		Housing Inv			2	1	0	0	0	0	0	0	0	0	0.0
		VDL Inv			0	0	0	0	0	0	0	0	0	0	0.0
<b>Avondale (Carrollton (275))</b> \$358-\$435 50'	DNW-Carrltn BO 3Q16	Starts			0	0	0	0	0	0	0	0	0	0	
		Closings			0	0	0	0	0	0	0	0	0	0	0
		Housing Inv			0	0	0	0	0	0	0	0	0	0	0.0
		VDL Inv			0	0	0	0	0	0	0	0	0	0	0.0
<b>Baker's Branch Estat (138)</b> \$280-\$286 85'-117'	DNW-FlwrMnd BO 1Q02	Starts			0	0	0	0	0	0	0	0	0	0	
		Closings			0	0	0	0	0	0	0	0	0	0	0
		Housing Inv			0	0	0	0	0	0	0	0	0	0	0.0
		VDL Inv			0	0	0	0	0	0	0	0	0	0	0.0

Dallas/Ft. Worth Residential Survey (3Q22)

Copyright Metrostudy

Page 1 of 31

**metrstudy**  
A hanleywood Company

Sales: 1-800-227-8839

\*Inventory Supply = Housing Inv/(Annual Closings/12)  
Vacant Developed Lot Supply = VDL Inv/(Annual Starts/12)

N/A indicates Inventory is present but cannot calculate months of supply without starts or closings (see above).

# Quarterly Activity & Inventory Report

## Lewisville ISD

Sorted By Subdivision

Subdivision Name (Map No)	Sub Area	Status	3Q20	4Q20	1Q21	2Q21	3Q21	4Q21	1Q22	2Q22	3Q22	Ann. Rates/ *Inv. Supply	
<b>Bella Lago (Flower M (12))</b> \$800-\$1075    150'-152'	DNW-FlwrMnd BO 2Q15	Starts	0	0	0	0	0	0	0	0	0	0	
		Closings	0	0	0	0	0	0	0	0	0	0	
		Housing Inv	0	0	0	0	0	0	0	0	0	0	0.0
		VDL Inv	0	0	0	0	0	0	0	0	0	0	0.0
<b>Bella Strada (129)</b> \$426-\$562    43'-70'	DNW-FlwrMnd BO 2Q16	Starts	0	0	0	0	0	0	0	0	0	0	
		Closings	0	0	0	0	0	0	0	0	0	0	
		Housing Inv	0	0	0	0	0	0	0	0	0	0	0.0
		VDL Inv	0	0	0	0	0	0	0	0	0	0	0.0
<b>Bellaire Addition (153)</b> \$145-\$161    65'	DNW-Lewisvl BO 4Q00	Starts	0	0	0	0	0	0	0	0	0	0	
		Closings	0	0	0	0	0	0	0	0	0	0	
		Housing Inv	0	0	0	0	0	0	0	0	0	0	0.0
		VDL Inv	0	0	0	0	0	0	0	0	0	0	0.0
<b>Belle Creek Village (164)</b> \$384-\$474    83'	DNW-FlwrMnd BO 2Q13	Starts	0	0	0	0	0	0	0	0	0	0	
		Closings	0	0	0	0	0	0	0	0	0	0	
		Housing Inv	0	0	0	0	0	0	0	0	0	0	0.0
		VDL Inv	0	0	0	0	0	0	0	0	0	0	0.0
<b>Bradford Park (Flowe (72))</b> \$735-\$830    50'-75' <i>Lennar Homes/Village Builders Inc</i>	DNW-FlwrMnd Act 1Q19	Starts	7	6	15	7	11	12	13	9	3	37	
		Closings	9	18	8	5	10	7	2	16	10	35	
		Housing Inv	26	14	21	23	24	29	40	33	26	8.9 mos	
		VDL Inv	89	83	68	60	49	37	24	15	12	3.9 mos	
<b>Brentwood Court Town (298)</b> \$410-\$439    24' <i>Havendale Homes</i>	DNW-Colony Act 1Q20	Starts	0	0	0	0	5	0	0	0	13	13	
		Closings	0	4	1	0	0	5	0	0	6	11	
		Housing Inv	5	1	0	0	5	0	0	0	7	7.6 mos	
		VDL Inv	38	38	38	38	33	33	33	33	20	18.5 mos	
<b>Bridlewood (41)</b> \$213-\$850    70'-208'	DNW-FlwrMnd BO 3Q08	Starts	0	0	0	0	0	0	0	0	0	0	
		Closings	0	0	0	0	0	0	0	0	0	0	
		Housing Inv	0	0	0	0	0	0	0	0	0	0	0.0
		VDL Inv	0	0	0	0	0	0	0	0	0	0	0.0
<b>Brighton Place (49)</b> \$750-\$800    149'	DNW-FlwrMnd BO 1Q21	Starts	0	0	0	0	0	0	0	0	0	0	
		Closings	0	0	1	0	0	0	0	0	0	0	
		Housing Inv	1	1	0	0	0	0	0	0	0	0	0.0
		VDL Inv	0	0	0	0	0	0	0	0	0	0	0.0
<b>Brittian Estates (152)</b> \$450-\$570    100'	DNW-Lewisvl BO 4Q03	Starts	0	0	0	0	0	0	0	0	0	0	
		Closings	0	0	0	0	0	0	0	0	0	0	
		Housing Inv	0	0	0	0	0	0	0	0	0	0	0.0
		VDL Inv	0	0	0	0	0	0	0	0	0	0	0.0
<b>Brookside Addition (198)</b> \$269-\$339    50'	DNW-Lewisvl BO 3Q16	Starts	0	0	0	0	0	0	0	0	0	0	
		Closings	0	0	0	0	0	0	0	0	0	0	
		Housing Inv	0	0	0	0	0	0	0	0	0	0	0.0
		VDL Inv	0	0	0	0	0	0	0	0	0	0	0.0
<b>Brookstone Addition (140)</b> \$240-\$347    80'	DNW-FlwrMnd BO 4Q03	Starts	0	0	0	0	0	0	0	0	0	0	
		Closings	0	0	0	0	0	0	0	0	0	0	
		Housing Inv	0	0	0	0	0	0	0	0	0	0	0.0
		VDL Inv	0	0	0	0	0	0	0	0	0	0	0.0

Dallas/Ft. Worth Residential Survey (3Q22)

Copyright Metrostudy

Page 2 of 31

**metrstudy**  
A hanleywood Company

Sales: 1-800-227-8839

\*Inventory Supply = Housing Inv/(Annual Closings/12)  
Vacant Developed Lot Supply = VDL Inv/(Annual Starts/12)

N/A indicates Inventory is present but cannot calculate months of supply without starts or closings (see above).

# Quarterly Activity & Inventory Report

## Lewisville ISD

Sorted By Subdivision

Subdivision Name (Map No)	Sub Area	Price Range	Lot Size	Status	3Q20	4Q20	1Q21	2Q21	3Q21	4Q21	1Q22	2Q22	3Q22	Ann. Rates/ *Inv. Supply	
<b>Brownstones on West (203)</b> \$400-\$450 20'	DNW-Lewisvl BO 3Q22	Starts			0	0	0	0	0	0	0	0	0	0	
		Closings			0	0	6	0	0	0	0	0	8	8	
		Housing Inv			14	14	8	8	8	8	8	8	8	0	0.0
		VDL Inv			0	0	0	0	0	0	0	0	0	0	0.0
<b>Bryn Mar Estates (107)</b> \$330-\$366 90'	DNW-FlwrMnd BO 4Q02	Starts			0	0	0	0	0	0	0	0	0	0	
		Closings			0	0	0	0	0	0	0	0	0	0	0
		Housing Inv			0	0	0	0	0	0	0	0	0	0	0.0
		VDL Inv			0	0	0	0	0	0	0	0	0	0	0.0
<b>Camey Place (284)</b> \$600-\$700 45' David Weekley Homes	DNW-Colony Act 3Q22	Starts			0	0	0	0	0	0	0	0	0	0	
		Closings			0	0	0	0	0	0	0	0	0	0	0
		Housing Inv			0	0	0	0	0	0	0	0	0	0	0.0
		VDL Inv			0	0	0	0	0	0	0	0	80	0	n/a
<b>Camryn Downs (47)</b> \$750-\$800 100'	DNW-DOak BO 4Q16	Starts			0	0	0	0	0	0	0	0	0	0	
		Closings			0	0	0	0	0	0	0	0	0	0	0
		Housing Inv			0	0	0	0	0	0	0	0	0	0	0.0
		VDL Inv			0	0	0	0	0	0	0	0	0	0	0.0
<b>Canterbury Row (50)</b> \$450-\$600 100'	DNW-FlwrMnd BO 2Q10	Starts			0	0	0	0	0	0	0	0	0	0	
		Closings			0	0	0	0	0	0	0	0	0	0	0
		Housing Inv			0	0	0	0	0	0	0	0	0	0	0.0
		VDL Inv			0	0	0	0	0	0	0	0	0	0	0.0
<b>Carrington Village (196)</b> \$199-\$273 35'	DNW-Lewisvl BO 2Q14	Starts			0	0	0	0	0	0	0	0	0	0	
		Closings			0	0	0	0	0	0	0	0	0	0	0
		Housing Inv			0	0	0	0	0	0	0	0	0	0	0.0
		VDL Inv			0	0	0	0	0	0	0	0	0	0	0.0
<b>Cascades at the Lege (301)</b> \$149-\$194 50'-55'	DNW-Colony BO 1Q10	Starts			0	0	0	0	0	0	0	0	0	0	
		Closings			0	0	0	0	0	0	0	0	0	0	0
		Housing Inv			0	0	0	0	0	0	0	0	0	0	0.0
		VDL Inv			0	0	0	0	0	0	0	0	0	0	0.0
<b>Cascades at the Lege (303)</b> \$127-\$161 25'-33'	DNW-Colony BO 1Q10	Starts			0	0	0	0	0	0	0	0	0	0	
		Closings			0	0	0	0	0	0	0	0	0	0	0
		Housing Inv			0	0	0	0	0	0	0	0	0	0	0.0
		VDL Inv			0	0	0	0	0	0	0	0	0	0	0.0
<b>Castle Hills (Lewisv) (254)</b> \$435-\$2000 40'-134'	DNW-Lewisvl Act 2Q98	Starts			0	0	1	8	12	1	2	1	6	10	
		Closings			0	0	2	0	1	0	1	12	11	24	
		Housing Inv			4	4	3	11	22	23	24	13	8	4.0 mos	
		VDL Inv			49	49	48	57	45	44	42	42	36	43.2 mos	
<b>Castle Hills/Carroll (272)</b> \$448-\$931 41'-80'	DNW-Carrlltn Act 4Q20	Starts			0	0	1	27	104	41	42	15	23	121	
		Closings			0	0	0	0	2	15	44	61	76	196	
		Housing Inv			0	0	1	28	130	156	154	108	55	3.4 mos	
		VDL Inv			0	69	209	279	152	111	69	54	31	3.1 mos	

\*Inventory Supply = Housing Inv/(Annual Closings/12)  
Vacant Developed Lot Supply = VDL Inv/(Annual Starts/12)

N/A indicates Inventory is present but cannot calculate months of supply without starts or closings (see above).

Dallas/Ft. Worth Residential Survey (3Q22)

Copyright Metrostudy  
Page 3 of 31

**metrostudy**  
A hanleywood Company

Sales: 1-800-227-8839

# Quarterly Activity & Inventory Report

## Lewisville ISD

Sorted By Subdivision

Subdivision Name (Map No)	Sub Area	Status	3Q20	4Q20	1Q21	2Q21	3Q21	4Q21	1Q22	2Q22	3Q22	Ann. Rates/ *Inv. Supply	
<b>Castle Hills/Chateau (258)</b> \$390-\$455      28'	DNW-Lewisvl BO 2Q18	Starts	0	0	0	0	0	0	0	0	0	0	
		Closings	0	0	0	0	0	0	0	0	0	0	
		Housing Inv	0	0	0	0	0	0	0	0	0	0	0.0
		VDL Inv	0	0	0	0	0	0	0	0	0	0	0.0
<b>Castle Hills/Discover (266)</b> \$0-\$0      37'	DNW-Lewisvl Future	Starts	0	0	0	0	0	0	0	0	0	0	
		Closings	0	0	0	0	0	0	0	0	0	0	
		Housing Inv	0	0	0	0	0	0	0	0	0	0	0.0
		VDL Inv	0	0	0	0	0	0	0	0	0	0	0.0
<b>Castle Hills/Northpo (263)</b> \$448-\$816      41'-65' <i>American Legend Homes</i>	DNW-Lewisvl Act 3Q19	Starts	13	6	3	3	2	0	2	0	22	24	
		Closings	28	19	12	8	4	2	0	2	3	7	
		Housing Inv	37	24	15	10	8	6	8	6	6	25	42.9 mos
		VDL Inv	173	167	164	162	159	163	161	151	129	129	64.5 mos
<b>Castle Hills/Northpo (268)</b> \$420-\$451      36'	DNW-Lewisvl BO 1Q22	Starts	20	23	12	20	0	0	0	0	0	0	
		Closings	5	23	17	22	13	0	14	0	0	0	14
		Housing Inv	34	34	29	27	14	14	0	0	0	0	0.0
		VDL Inv	55	32	20	0	0	0	0	0	0	0	0.0
<b>Castle Hills/Retreat (264)</b> \$380-\$410      42'	DNW-Lewisvl BO 2Q14	Starts	0	0	0	0	0	0	0	0	0	0	
		Closings	0	0	0	0	0	0	0	0	0	0	
		Housing Inv	0	0	0	0	0	0	0	0	0	0	0.0
		VDL Inv	0	0	0	0	0	0	0	0	0	0	0.0
<b>Castle Hills/Southwe (245)</b> \$377-\$603      41'-50'	DNW-Carrlltn BO 1Q21	Starts	0	0	0	0	0	0	0	0	0	0	
		Closings	12	1	1	0	0	0	0	0	0	0	
		Housing Inv	2	1	0	0	0	0	0	0	0	0	0.0
		VDL Inv	0	0	0	0	0	0	0	0	0	0	0.0
<b>Castle Hills/Village (261)</b> \$425-\$440      25'	DNW-Lewisvl BO 2Q07	Starts	0	0	0	0	0	0	0	0	0	0	
		Closings	0	0	0	0	0	0	0	0	0	0	
		Housing Inv	0	0	0	0	0	0	0	0	0	0	0.0
		VDL Inv	0	0	0	0	0	0	0	0	0	0	0.0
<b>Castle Hills/Windhav (273)</b> \$0-\$0      35'	DNW-Lewisvl Future	Starts	0	0	0	0	0	0	0	0	0	0	
		Closings	0	0	0	0	0	0	0	0	0	0	
		Housing Inv	0	0	0	0	0	0	0	0	0	0	0.0
		VDL Inv	0	0	0	0	0	0	0	0	0	0	0.0
<b>Castlewood (Highland (79)</b> \$241-\$510      68'-120'	DNW-HighVil BO 4Q10	Starts	0	0	0	0	0	0	0	0	0	0	
		Closings	0	0	0	0	0	0	0	0	0	0	
		Housing Inv	0	0	0	0	0	0	0	0	0	0	0.0
		VDL Inv	0	0	0	0	0	0	0	0	0	0	0.0
<b>Cedar Creek Addition (131)</b> \$160-\$237      50'	DNW-FlwrMnd BO 3Q06	Starts	0	0	0	0	0	0	0	0	0	0	
		Closings	0	0	0	0	0	0	0	0	0	0	
		Housing Inv	0	0	0	0	0	0	0	0	0	0	0.0
		VDL Inv	0	0	0	0	0	0	0	0	0	0	0.0
<b>Chapel Creek Estates (60)</b> \$260-\$393      200'	DNW-CCanyon BO 2Q00	Starts	0	0	0	0	0	0	0	0	0	0	
		Closings	0	0	0	0	0	0	0	0	0	0	
		Housing Inv	0	0	0	0	0	0	0	0	0	0	0.0
		VDL Inv	0	0	0	0	0	0	0	0	0	0	0.0

Dallas/Ft. Worth Residential Survey (3Q22)

Copyright Metrostudy

Page 4 of 31

**metrstudy**  
A Hanleywood Company

Sales: 1-800-227-8839

\*Inventory Supply = Housing Inv/(Annual Closings/12)  
Vacant Developed Lot Supply = VDL Inv/(Annual Starts/12)

N/A indicates Inventory is present but cannot calculate months of supply without starts or closings (see above).

# Quarterly Activity & Inventory Report

## Lewisville ISD

Sorted By Subdivision

Subdivision Name (Map No)	Sub Area	Price Range	Lot Size	Status	3Q20	4Q20	1Q21	2Q21	3Q21	4Q21	1Q22	2Q22	3Q22	Ann. Rates/ *Inv. Supply	
<b>Chapel Hill Addition (75)</b> \$255-\$330 65'-85'	DNW-HighVil BO 4Q08	Starts			0	0	0	0	0	0	0	0	0	0	
		Closings			0	0	0	0	0	0	0	0	0	0	0
		Housing Inv			0	0	0	0	0	0	0	0	0	0	0.0
		VDL Inv			0	0	0	0	0	0	0	0	0	0	0.0
<b>Chapel Springs (High) (62)</b> \$326-\$500 65'-80'	DNW-HighVil BO 4Q14	Starts			0	0	0	0	0	0	0	0	0	0	
		Closings			0	0	0	0	0	0	0	0	0	0	0
		Housing Inv			0	0	0	0	0	0	0	0	0	0	0.0
		VDL Inv			0	0	0	0	0	0	0	0	0	0	0.0
<b>Charles Ridge (310)</b> \$0-\$0 24'	DNW-Carrltn Future	Starts			0	0	0	0	0	0	0	0	0	0	
		Closings			0	0	0	0	0	0	0	0	0	0	0
		Housing Inv			0	0	0	0	0	0	0	0	0	0	0.0
		VDL Inv			0	0	0	0	0	0	0	0	0	0	0.0
<b>Chase Oaks Addition (176)</b> \$159-\$237 42'-53'	DNW-Lewisvl BO 1Q14	Starts			0	0	0	0	0	0	0	0	0	0	
		Closings			0	0	0	0	0	0	0	0	0	0	0
		Housing Inv			0	0	0	0	0	0	0	0	0	0	0.0
		VDL Inv			0	0	0	0	0	0	0	0	0	0	0.0
<b>Chase Oaks Addition (177)</b> \$174-\$231 25'	DNW-Lewisvl BO 1Q12	Starts			0	0	0	0	0	0	0	0	0	0	
		Closings			0	0	0	0	0	0	0	0	0	0	0
		Housing Inv			0	0	0	0	0	0	0	0	0	0	0.0
		VDL Inv			0	0	0	0	0	0	0	0	0	0	0.0
<b>Chateau du Lac (10)</b> \$1250-\$3000 187'-240' Calais Custom Homes/Malone Custom Builders	DNW-FlwrMnd Act 3Q00	Starts			0	0	1	0	0	0	1	0	0	1	
		Closings			3	0	0	1	0	0	0	1	2	3	
		Housing Inv			2	2	3	2	2	2	3	2	0	0	0.0
		VDL Inv			9	9	8	8	8	8	8	7	7	7	84.0 mos
<b>Chaucer Estates (114)</b> \$206-\$254 68'-85'	DNW-FlwrMnd BO 1Q00	Starts			0	0	0	0	0	0	0	0	0	0	
		Closings			0	0	0	0	0	0	0	0	0	0	0
		Housing Inv			0	0	0	0	0	0	0	0	0	0	0.0
		VDL Inv			0	0	0	0	0	0	0	0	0	0	0.0
<b>Chimney Rock (Flower) (1)</b> \$759-\$1350 150'	DNW-FlwrMnd BO 3Q14	Starts			0	0	0	0	0	0	0	0	0	0	
		Closings			0	0	0	0	0	0	0	0	0	0	0
		Housing Inv			0	0	0	0	0	0	0	0	0	0	0.0
		VDL Inv			0	0	0	0	0	0	0	0	0	0	0.0
<b>Churchill Crossing (83)</b> \$171-\$230 70'-100'	DNW-FlwrMnd BO 1Q00	Starts			0	0	0	0	0	0	0	0	0	0	
		Closings			0	0	0	0	0	0	0	0	0	0	0
		Housing Inv			0	0	0	0	0	0	0	0	0	0	0.0
		VDL Inv			0	0	0	0	0	0	0	0	0	0	0.0
<b>CMP Family Addition (14)</b> \$2000-\$4000 307'	DNW-FlwrMnd BO 2Q20	Starts			0	0	0	0	0	0	0	0	0	0	
		Closings			0	0	0	0	0	0	0	0	0	0	0
		Housing Inv			0	0	0	0	0	0	0	0	0	0	0.0
		VDL Inv			0	0	0	0	0	0	0	0	0	0	0.0
<b>Coppell Greens (199)</b> \$184-\$237 48'-65'	DNW-Coppell BO 2Q03	Starts			0	0	0	0	0	0	0	0	0	0	
		Closings			0	0	0	0	0	0	0	0	0	0	0
		Housing Inv			0	0	0	0	0	0	0	0	0	0	0.0
		VDL Inv			0	0	0	0	0	0	0	0	0	0	0.0

Dallas/Ft. Worth Residential Survey (3Q22)

Copyright Metrostudy

Page 5 of 31

**metrstudy**  
A hanleywood Company

Sales: 1-800-227-8839

\*Inventory Supply = Housing Inv/(Annual Closings/12)  
Vacant Developed Lot Supply = VDL Inv/(Annual Starts/12)

N/A indicates Inventory is present but cannot calculate months of supply without starts or closings (see above).

# Quarterly Activity & Inventory Report

## Lewisville ISD

Sorted By Subdivision

Subdivision Name (Map No)	Sub Area	Price Range	Lot Size	Status	3Q20	4Q20	1Q21	2Q21	3Q21	4Q21	1Q22	2Q22	3Q22	Ann. Rates/ *Inv. Supply	
<b>Copper Woods (40)</b> \$420-\$905 458'	DNW-CCanyon BO 2Q08	Starts			0	0	0	0	0	0	0	0	0	0	
		Closings			0	0	0	0	0	0	0	0	0	0	0
		Housing Inv			0	0	0	0	0	0	0	0	0	0	0.0
		VDL Inv			0	0	0	0	0	0	0	0	0	0	0.0
<b>Copperas Branch Addi (158)</b> \$300-\$450 80' Pyland Custom Homes	DNW-HighVil Act 3Q03	Starts			0	0	0	0	0	0	0	0	0	0	
		Closings			0	0	0	0	0	0	0	0	0	0	0
		Housing Inv			0	0	0	0	0	0	0	0	0	0	0.0
		VDL Inv			9	9	9	9	9	9	9	9	9	9	n/a
<b>Country Meadow Addit (90)</b> \$152-\$197 50'	DNW-FlwrMnd BO 3Q01	Starts			0	0	0	0	0	0	0	0	0	0	
		Closings			0	0	0	0	0	0	0	0	0	0	0
		Housing Inv			0	0	0	0	0	0	0	0	0	0	0.0
		VDL Inv			0	0	0	0	0	0	0	0	0	0	0.0
<b>Coyote Ridge (230)</b> \$296-\$570 80'	DNW-Carrlltn BO 3Q06	Starts			0	0	0	0	0	0	0	0	0	0	
		Closings			0	0	0	0	0	0	0	0	0	0	0
		Housing Inv			0	0	0	0	0	0	0	0	0	0	0.0
		VDL Inv			0	0	0	0	0	0	0	0	0	0	0.0
<b>Coyote Ridge/Grandvi (228)</b> \$273-\$400 60'	DNW-Carrlltn BO 2Q03	Starts			0	0	0	0	0	0	0	0	0	0	
		Closings			0	0	0	0	0	0	0	0	0	0	0
		Housing Inv			0	0	0	0	0	0	0	0	0	0	0.0
		VDL Inv			0	0	0	0	0	0	0	0	0	0	0.0
<b>Creekside Addn. (Car (307))</b> \$400-\$480 80'	DNW-Carrlltn BO 1Q07	Starts			0	0	0	0	0	0	0	0	0	0	
		Closings			0	0	0	0	0	0	0	0	0	0	0
		Housing Inv			0	0	0	0	0	0	0	0	0	0	0.0
		VDL Inv			0	0	0	0	0	0	0	0	0	0	0.0
<b>Creekside at Austin (299)</b> \$427-\$606 50'-60'	DNW-Colony BO 1Q20	Starts			0	0	0	0	0	0	0	0	0	0	
		Closings			0	0	0	0	0	0	0	0	0	0	0
		Housing Inv			0	0	0	0	0	0	0	0	0	0	0.0
		VDL Inv			0	0	0	0	0	0	0	0	0	0	0.0
<b>Creekside at Heritag (148)</b> \$780-\$960 80'	DNW-FlwrMnd BO 1Q22	Starts			1	2	1	2	0	0	0	0	0	0	
		Closings			2	3	0	5	2	1	3	0	0	0	4
		Housing Inv			9	8	9	6	4	3	0	0	0	0	0.0
		VDL Inv			5	3	2	0	0	0	0	0	0	0	0.0
<b>Crescent Estates Add (178)</b> \$355-\$455 50'	DNW-Lewisvl BO 2Q19	Starts			0	0	0	0	0	0	0	0	0	0	
		Closings			0	0	0	0	0	0	0	0	0	0	0
		Housing Inv			0	0	0	0	0	0	0	0	0	0	0.0
		VDL Inv			0	0	0	0	0	0	0	0	0	0	0.0
<b>Cross Timbers (Dbl O (11))</b> \$189-\$330 150'-165'	DNW-DOak BO 2Q08	Starts			0	0	0	0	0	0	0	0	0	0	
		Closings			0	0	0	0	0	0	0	0	0	0	0
		Housing Inv			0	0	0	0	0	0	0	0	0	0	0.0
		VDL Inv			0	0	0	0	0	0	0	0	0	0	0.0
<b>CT Simmons Addition (171)</b> \$105-\$135 38'	DNW-Lewisvl BO 2Q05	Starts			0	0	0	0	0	0	0	0	0	0	
		Closings			0	0	0	0	0	0	0	0	0	0	0
		Housing Inv			0	0	0	0	0	0	0	0	0	0	0.0
		VDL Inv			0	0	0	0	0	0	0	0	0	0	0.0

Dallas/Ft. Worth Residential Survey (3Q22)

Copyright Metrostudy

Page 6 of 31

**metrstudy**  
A hanleywood Company

Sales: 1-800-227-8839

\*Inventory Supply = Housing Inv/(Annual Closings/12)  
Vacant Developed Lot Supply = VDL Inv/(Annual Starts/12)

N/A indicates Inventory is present but cannot calculate months of supply without starts or closings (see above).

# Quarterly Activity & Inventory Report

## Lewisville ISD

Sorted By Subdivision

Subdivision Name (Map No)	Sub Area	Status	3Q20	4Q20	1Q21	2Q21	3Q21	4Q21	1Q22	2Q22	3Q22	Ann. Rates/ *Inv. Supply	
<b>Diamond Belle Estate (64)</b> \$400-\$750      80'	DNW-FlwrMnd BO 4Q10	Starts	0	0	0	0	0	0	0	0	0	0	
		Closings	0	0	0	0	0	0	0	0	0	0	
		Housing Inv	0	0	0	0	0	0	0	0	0	0	0.0
		VDL Inv	0	0	0	0	0	0	0	0	0	0	0.0
<b>Diamond Creek Additi (311)</b> \$550-\$700      146'	DNW-Carrltn BO 2Q19	Starts	0	0	0	0	0	0	0	0	0	0	
		Closings	0	0	0	0	0	0	0	0	0	0	
		Housing Inv	0	0	0	0	0	0	0	0	0	0	0.0
		VDL Inv	0	0	0	0	0	0	0	0	0	0	0.0
<b>Diamond Hill (Lewisv (154)</b> \$121-\$137      50'	DNW-Lewisvl BO 2Q00	Starts	0	0	0	0	0	0	0	0	0	0	
		Closings	0	0	0	0	0	0	0	0	0	0	
		Housing Inv	0	0	0	0	0	0	0	0	0	0	0.0
		VDL Inv	0	0	0	0	0	0	0	0	0	0	0.0
<b>Diamond Ridge (279)</b> \$107-\$190      61'	DNW-Carrltn BO 1Q01	Starts	0	0	0	0	0	0	0	0	0	0	
		Closings	0	0	0	0	0	0	0	0	0	0	
		Housing Inv	0	0	0	0	0	0	0	0	0	0	0.0
		VDL Inv	0	0	0	0	0	0	0	0	0	0	0.0
<b>District of Highland (99)</b> \$282-\$355      40'	DNW-HighVil BO 3Q14	Starts	0	0	0	0	0	0	0	0	0	0	
		Closings	0	0	0	0	0	0	0	0	0	0	
		Housing Inv	0	0	0	0	0	0	0	0	0	0	0.0
		VDL Inv	0	0	0	0	0	0	0	0	0	0	0.0
<b>Dixon Estates (91)</b> \$0-\$0      94'	DNW-FlwrMnd Future	Starts	0	0	0	0	0	0	0	0	0	0	
		Closings	0	0	0	0	0	0	0	0	0	0	
		Housing Inv	0	0	0	0	0	0	0	0	0	0	0.0
		VDL Inv	0	0	0	0	0	0	0	0	0	0	0.0
<b>Dominion Estates (FI (25)</b> \$455-\$499      150'	DNW-FlwrMnd BO 2Q00	Starts	0	0	0	0	0	0	0	0	0	0	
		Closings	0	0	0	0	0	0	0	0	0	0	
		Housing Inv	0	0	0	0	0	0	0	0	0	0	0.0
		VDL Inv	0	0	0	0	0	0	0	0	0	0	0.0
<b>Dougherty Addition T (186)</b> \$300-\$400      21'	DNW-Lewisvl BO 4Q21	Starts	0	0	0	0	0	0	0	0	0	0	
		Closings	0	2	0	0	0	2	0	0	0	0	2
		Housing Inv	4	2	2	2	2	0	0	0	0	0	0.0
		VDL Inv	0	0	0	0	0	0	0	0	0	0	0.0
<b>Dove Creek (Lewisvil (142)</b> \$300-\$600      132'	DNW-Lewisvl BO 2Q08	Starts	0	0	0	0	0	0	0	0	0	0	
		Closings	0	0	0	0	0	0	0	0	0	0	
		Housing Inv	0	0	0	0	0	0	0	0	0	0	0.0
		VDL Inv	0	0	0	0	0	0	0	0	0	0	0.0
<b>Edgewood (Flower Mou (139)</b> \$650-\$685      65'	DNW-FlwrMnd BO 2Q20	Starts	0	0	0	0	0	0	0	0	0	0	
		Closings	0	0	0	0	0	0	0	0	0	0	
		Housing Inv	0	0	0	0	0	0	0	0	0	0	0.0
		VDL Inv	0	0	0	0	0	0	0	0	0	0	0.0
<b>Emerald Bay (21)</b> \$610-\$650      180'	DNW-FlwrMnd BO 2Q05	Starts	0	0	0	0	0	0	0	0	0	0	
		Closings	0	0	0	0	0	0	0	0	0	0	
		Housing Inv	0	0	0	0	0	0	0	0	0	0	0.0
		VDL Inv	0	0	0	0	0	0	0	0	0	0	0.0

Dallas/Ft. Worth Residential Survey (3Q22)

Copyright Metrostudy

Page 7 of 31

**metrstudy**  
A Hanleywood Company

Sales: 1-800-227-8839

\*Inventory Supply = Housing Inv/(Annual Closings/12)  
Vacant Developed Lot Supply = VDL Inv/(Annual Starts/12)

N/A indicates Inventory is present but cannot calculate months of supply without starts or closings (see above).

# Quarterly Activity & Inventory Report

## Lewisville ISD

Sorted By Subdivision

Subdivision Name (Map No)	Sub Area	Price Range	Lot Size	Status	3Q20	4Q20	1Q21	2Q21	3Q21	4Q21	1Q22	2Q22	3Q22	Ann. Rates/ *Inv. Supply	
<b>Emerald Place (141)</b> \$0-\$0 80'	DNW-FlwrMnd Future	Starts			0	0	0	0	0	0	0	0	0	0	
		Closings			0	0	0	0	0	0	0	0	0	0	0
		Housing Inv			0	0	0	0	0	0	0	0	0	0	0.0
		VDL Inv			0	0	0	0	0	0	0	0	0	0	0.0
<b>Essex Park Townhomes (280)</b> \$512-\$554 45'	DNW-Carrltn BO 2Q22	Starts			16	8	10	15	7	1	0	0	0	1	
		Closings			11	12	8	9	15	12	2	6	0	20	
		Housing Inv			23	19	21	27	19	8	6	0	0	0	0.0
		VDL Inv			41	33	23	8	1	0	0	0	0	0	0.0
<b>Estancia Estates (54)</b> \$475-\$616 80'	DNW-FlwrMnd BO 4Q19	Starts			0	0	0	0	0	0	0	0	0	0	
		Closings			0	0	0	0	0	0	0	0	0	0	
		Housing Inv			0	0	0	0	0	0	0	0	0	0	0.0
		VDL Inv			0	0	0	0	0	0	0	0	0	0	0.0
<b>Estates @ Copper Can (39)</b> \$750-\$950 190'	DNW-CCanyon BO 2Q08	Starts			0	0	0	0	0	0	0	0	0	0	
		Closings			0	0	0	0	0	0	0	0	0	0	
		Housing Inv			0	0	0	0	0	0	0	0	0	0	0.0
		VDL Inv			0	0	0	0	0	0	0	0	0	0	0.0
<b>Estates at Lake Vist (227)</b> \$327-\$410 52'	DNW-Coppell BO 3Q15	Starts			0	0	0	0	0	0	0	0	0	0	
		Closings			0	0	0	0	0	0	0	0	0	0	
		Housing Inv			0	0	0	0	0	0	0	0	0	0	0.0
		VDL Inv			0	0	0	0	0	0	0	0	0	0	0.0
<b>Estates of Double Oa (23)</b> \$410-\$500 150'	DNW-DOak BO 2Q04	Starts			0	0	0	0	0	0	0	0	0	0	
		Closings			0	0	0	0	0	0	0	0	0	0	
		Housing Inv			0	0	0	0	0	0	0	0	0	0	0.0
		VDL Inv			0	0	0	0	0	0	0	0	0	0	0.0
<b>Estates of Flower Mo (89)</b> \$244-\$293 80'	DNW-FlwrMnd BO 1Q02	Starts			0	0	0	0	0	0	0	0	0	0	
		Closings			0	0	0	0	0	0	0	0	0	0	
		Housing Inv			0	0	0	0	0	0	0	0	0	0	0.0
		VDL Inv			0	0	0	0	0	0	0	0	0	0	0.0
<b>Estates of Indian Cr (236)</b> \$365-\$424 50'	DNW-Carrltn BO 3Q16	Starts			0	0	0	0	0	0	0	0	0	0	
		Closings			0	0	0	0	0	0	0	0	0	0	
		Housing Inv			0	0	0	0	0	0	0	0	0	0	0.0
		VDL Inv			0	0	0	0	0	0	0	0	0	0	0.0
<b>Estuary Pointe (17)</b> \$0-\$0 150'	DNW-FlwrMnd Future	Starts			0	0	0	0	0	0	0	0	0	0	
		Closings			0	0	0	0	0	0	0	0	0	0	
		Housing Inv			0	0	0	0	0	0	0	0	0	0	0.0
		VDL Inv			0	0	0	0	0	0	0	0	0	0	0.0
<b>Fairwater (291)</b> \$664-\$685 65'	DNE-Frisco BO 2Q20	Starts			0	0	0	0	0	0	0	0	0	0	
		Closings			0	0	0	0	0	0	0	0	0	0	
		Housing Inv			0	0	0	0	0	0	0	0	0	0	0.0
		VDL Inv			0	0	0	0	0	0	0	0	0	0	0.0
<b>Fallbrook (144)</b> \$275-\$290 80'	DNW-FlwrMnd BO 1Q04	Starts			0	0	0	0	0	0	0	0	0	0	
		Closings			0	0	0	0	0	0	0	0	0	0	
		Housing Inv			0	0	0	0	0	0	0	0	0	0	0.0
		VDL Inv			0	0	0	0	0	0	0	0	0	0	0.0

Dallas/Ft. Worth Residential Survey (3Q22)

Copyright Metrostudy

Page 8 of 31

**metrstudy**  
A Hanleywood Company

Sales: 1-800-227-8839

\*Inventory Supply = Housing Inv/(Annual Closings/12)  
Vacant Developed Lot Supply = VDL Inv/(Annual Starts/12)

N/A indicates Inventory is present but cannot calculate months of supply without starts or closings (see above).



# Quarterly Activity & Inventory Report

## Lewisville ISD

Sorted By Subdivision

Subdivision Name (Map No)	Sub Area	Price Range	Lot Size	Status	3Q20	4Q20	1Q21	2Q21	3Q21	4Q21	1Q22	2Q22	3Q22	Ann. Rates/ *Inv. Supply	
<b>Flower Mound Oaks (143)</b> \$454-\$512 80'	DNW-FlwrMnd BO 1Q15	Starts			0	0	0	0	0	0	0	0	0	0	
		Closings			0	0	0	0	0	0	0	0	0	0	0
		Housing Inv			0	0	0	0	0	0	0	0	0	0	0.0
		VDL Inv			0	0	0	0	0	0	0	0	0	0	0.0
<b>Flower Mound Woods (52)</b> \$442-\$506 109'	DNW-FlwrMnd BO 4Q12	Starts			0	0	0	0	0	0	0	0	0	0	
		Closings			0	0	0	0	0	0	0	0	0	0	0
		Housing Inv			0	0	0	0	0	0	0	0	0	0	0.0
		VDL Inv			0	0	0	0	0	0	0	0	0	0	0.0
<b>Forest Park Estates (84)</b> \$150-\$200 65'	DNW-FlwrMnd BO 2Q00	Starts			0	0	0	0	0	0	0	0	0	0	
		Closings			0	0	0	0	0	0	0	0	0	0	0
		Housing Inv			0	0	0	0	0	0	0	0	0	0	0.0
		VDL Inv			0	0	0	0	0	0	0	0	0	0	0.0
<b>Forest Vista Estates (118)</b> \$550-\$700 Ark Custom Homes/Marvel Homes 85'	DNW-FlwrMnd Act 3Q09	Starts			0	0	0	0	0	1	0	0	0	0	1
		Closings			0	0	0	0	0	0	0	0	0	0	0
		Housing Inv			0	0	0	0	0	0	1	1	1	1	n/a
		VDL Inv			1	1	1	1	1	0	0	0	0	0	0.0
<b>Forums Residential, (97)</b> \$223-\$245 95'	DNW-FlwrMnd BO 4Q08	Starts			0	0	0	0	0	0	0	0	0	0	
		Closings			0	0	0	0	0	0	0	0	0	0	0
		Housing Inv			0	0	0	0	0	0	0	0	0	0	0.0
		VDL Inv			0	0	0	0	0	0	0	0	0	0	0.0
<b>Fox Creek Estates (194)</b> \$154-\$195 63'-70'	DNW-Lewisvl BO 2Q01	Starts			0	0	0	0	0	0	0	0	0	0	
		Closings			0	0	0	0	0	0	0	0	0	0	0
		Housing Inv			0	0	0	0	0	0	0	0	0	0	0.0
		VDL Inv			0	0	0	0	0	0	0	0	0	0	0.0
<b>Foxborough Hollow (123)</b> \$260-\$265 90'	DNW-FlwrMnd BO 2Q00	Starts			0	0	0	0	0	0	0	0	0	0	
		Closings			0	0	0	0	0	0	0	0	0	0	0
		Housing Inv			0	0	0	0	0	0	0	0	0	0	0.0
		VDL Inv			0	0	0	0	0	0	0	0	0	0	0.0
<b>Frisco 45 Townhomes (321)</b> \$0-\$0 19'	DNE-Frisco Future	Starts			0	0	0	0	0	0	0	0	0	0	
		Closings			0	0	0	0	0	0	0	0	0	0	0
		Housing Inv			0	0	0	0	0	0	0	0	0	0	0.0
		VDL Inv			0	0	0	0	0	0	0	0	0	0	0.0
<b>Garden Park Place (155)</b> \$132-\$183 53'	DNW-Lewisvl BO 1Q04	Starts			0	0	0	0	0	0	0	0	0	0	
		Closings			0	0	0	0	0	0	0	0	0	0	0
		Housing Inv			0	0	0	0	0	0	0	0	0	0	0.0
		VDL Inv			0	0	0	0	0	0	0	0	0	0	0.0
<b>Garden Ridge Additio (157)</b> \$115-\$120 40'-50'	DNW-Lewisvl BO 2Q01	Starts			0	0	0	0	0	0	0	0	0	0	
		Closings			0	0	0	0	0	0	0	0	0	0	0
		Housing Inv			0	0	0	0	0	0	0	0	0	0	0.0
		VDL Inv			0	0	0	0	0	0	0	0	0	0	0.0
<b>Garza Lake Estates ( 259)</b> \$0-\$0 55'	DNW-Colony Future	Starts			0	0	0	0	0	0	0	0	0	0	
		Closings			0	0	0	0	0	0	0	0	0	0	0
		Housing Inv			0	0	0	0	0	0	0	0	0	0	0.0
		VDL Inv			0	0	0	0	0	0	0	0	0	0	0.0

# Quarterly Activity & Inventory Report

## Lewisville ISD

Sorted By Subdivision

Subdivision Name (Map No)	Sub Area	Price Range	Lot Size	Status	3Q20	4Q20	1Q21	2Q21	3Q21	4Q21	1Q22	2Q22	3Q22	Ann. Rates/ *Inv. Supply
<b>Gates of Prestonwood (317)</b>	DNW-Carrltn	\$600-\$1000	80'	Act 4Q02	0	0	0	0	0	0	0	0	0	0
				Starts	0	0	0	0	0	0	0	0	0	0
				Closings	0	0	0	0	0	1	0	0	0	1
				Housing Inv	1	1	1	1	1	0	0	0	0	0.0
				VDL Inv	1	1	1	1	1	1	1	1	1	n/a
<b>Grace Park (44)</b>	DNW-FlwrMnd	\$0-\$0	87'-100'	Future	0	0	0	0	0	0	0	0	0	0
				Starts	0	0	0	0	0	0	0	0	0	0
				Closings	0	0	0	0	0	0	0	0	0	0
				Housing Inv	0	0	0	0	0	0	0	0	0	0.0
				VDL Inv	0	0	0	0	0	0	0	0	0	0.0
<b>Grand Park Estates (115)</b>	DNW-FlwrMnd	\$310-\$406	80'	BO 4Q07	0	0	0	0	0	0	0	0	0	0
				Starts	0	0	0	0	0	0	0	0	0	0
				Closings	0	0	0	0	0	0	0	0	0	0
				Housing Inv	0	0	0	0	0	0	0	0	0	0.0
				VDL Inv	0	0	0	0	0	0	0	0	0	0.0
<b>Great Lakes Crossing (166)</b>	DNW-Lewisvl	\$0-\$0	50'	Future	0	0	0	0	0	0	0	0	0	0
				Starts	0	0	0	0	0	0	0	0	0	0
				Closings	0	0	0	0	0	0	0	0	0	0
				Housing Inv	0	0	0	0	0	0	0	0	0	0.0
				VDL Inv	0	0	0	0	0	0	0	0	0	0.0
<b>Greenvalley Addition (173)</b>	DNW-Lewisvl	\$300-\$400	20'	Act 4Q20	0	6	0	0	0	0	0	1	0	1
				Starts	0	6	0	0	0	0	0	1	0	1
				Closings	0	0	0	0	6	0	0	0	0	0
				Housing Inv	0	6	6	6	0	0	0	1	1	n/a
				VDL Inv	0	0	0	0	0	0	0	3	3	36.0 mos
<b>Greenway Park (241)</b>	DNW-Carrltn	\$178-\$397	65'-80'	BO 2Q03	0	0	0	0	0	0	0	0	0	0
				Starts	0	0	0	0	0	0	0	0	0	0
				Closings	0	0	0	0	0	0	0	0	0	0
				Housing Inv	0	0	0	0	0	0	0	0	0	0.0
				VDL Inv	0	0	0	0	0	0	0	0	0	0.0
<b>Hamilton Park (287)</b>	DNW-Carrltn	\$422-\$422	45'	BO 3Q21	1	1	2	0	0	0	0	0	0	0
				Starts	1	1	2	0	0	0	0	0	0	0
				Closings	19	7	2	0	4	0	0	0	0	0
				Housing Inv	10	4	4	4	0	0	0	0	0	0.0
				VDL Inv	3	2	0	0	0	0	0	0	0	0.0
<b>Harris Street Townho (209)</b>	DNW-Lewisvl	\$300-\$300	30'	BO 4Q21	0	0	0	0	0	4	0	0	0	4
				Starts	0	0	0	0	0	4	0	0	0	4
				Closings	0	0	0	0	0	4	0	0	0	4
				Housing Inv	0	0	0	0	0	0	0	0	0	0.0
				VDL Inv	0	0	0	0	0	0	0	0	0	0.0
<b>Hawthorne (117)</b>	DNW-FlwrMnd	\$435-\$532	70'	BO 2Q16	0	0	0	0	0	0	0	0	0	0
				Starts	0	0	0	0	0	0	0	0	0	0
				Closings	0	0	0	0	0	0	0	0	0	0
				Housing Inv	0	0	0	0	0	0	0	0	0	0.0
				VDL Inv	0	0	0	0	0	0	0	0	0	0.0
<b>Hearthstone @ Firewh (116)</b>	DNW-FlwrMnd	\$147-\$180	50'	BO 3Q05	0	0	0	0	0	0	0	0	0	0
				Starts	0	0	0	0	0	0	0	0	0	0
				Closings	0	0	0	0	0	0	0	0	0	0
				Housing Inv	0	0	0	0	0	0	0	0	0	0.0
				VDL Inv	0	0	0	0	0	0	0	0	0	0.0
<b>Hedrick Estates (168)</b>	DNW-Lewisvl	\$134-\$140	50'	BO 1Q01	0	0	0	0	0	0	0	0	0	0
				Starts	0	0	0	0	0	0	0	0	0	0
				Closings	0	0	0	0	0	0	0	0	0	0
				Housing Inv	0	0	0	0	0	0	0	0	0	0.0
				VDL Inv	0	0	0	0	0	0	0	0	0	0.0

\*Inventory Supply = Housing Inv/(Annual Closings/12)  
Vacant Developed Lot Supply = VDL Inv/(Annual Starts/12)

N/A indicates Inventory is present but cannot calculate months of supply without starts or closings (see above).

Dallas/Ft. Worth Residential Survey (3Q22)

Copyright Metrostudy

Page 10 of 31

**metrstudy**  
A hanleywood Company

Sales: 1-800-227-8839

# Quarterly Activity & Inventory Report

## Lewisville ISD

Sorted By Subdivision

Subdivision Name (Map No)	Sub Area	Price Range	Lot Size	Status	3Q20	4Q20	1Q21	2Q21	3Q21	4Q21	1Q22	2Q22	3Q22	Ann. Rates/ *Inv. Supply	
<b>Heritage Hill (Lewis (202))</b> \$145-\$164 35'	DNW-Lewisvl BO 2Q07	Starts			0	0	0	0	0	0	0	0	0	0	
		Closings			0	0	0	0	0	0	0	0	0	0	0
		Housing Inv			0	0	0	0	0	0	0	0	0	0	0.0
		VDL Inv			0	0	0	0	0	0	0	0	0	0	0.0
<b>Heritage Square Addi (197)</b> \$140-\$180 35'	DNW-Lewisvl BO 4Q09	Starts			0	0	0	0	0	0	0	0	0	0	
		Closings			0	0	0	0	0	0	0	0	0	0	0
		Housing Inv			0	0	0	0	0	0	0	0	0	0	0.0
		VDL Inv			0	0	0	0	0	0	0	0	0	0	0.0
<b>Heritage Trails Addi (172)</b> \$379-\$474 24'-32' Gehan Homes/History Maker Homes	DNW-Lewisvl Act 1Q21	Starts			0	0	40	26	11	55	42	46	17	160	
		Closings			0	0	0	0	0	32	29	49	27	137	
		Housing Inv			0	0	40	66	77	100	113	110	100	8.8 mos	
		VDL Inv			0	0	208	182	171	117	75	29	12	0.9 mos	
<b>Heritage West (126)</b> \$1000-\$1200 70' Toll Brothers Inc	DNW-FlwrMnd Act 4Q21	Starts			0	0	0	0	0	0	8	21	0	29	
		Closings			0	0	0	0	0	0	0	0	0	0	
		Housing Inv			0	0	0	0	0	0	8	29	29	n/a	
		VDL Inv			0	0	0	0	0	30	22	1	1	0.4 mos	
<b>Hickory Springs at F (94)</b> \$322-\$382 94'	DNW-FlwrMnd BO 4Q07	Starts			0	0	0	0	0	0	0	0	0	0	
		Closings			0	0	0	0	0	0	0	0	0	0	
		Housing Inv			0	0	0	0	0	0	0	0	0	0.0	
		VDL Inv			0	0	0	0	0	0	0	0	0	0.0	
<b>Hidden Creek Estates (34)</b> \$850-\$1000 250' Precision Builders	DNW-CCanyon Act 2Q08	Starts			0	0	0	0	0	0	0	0	0	0	
		Closings			0	0	0	0	0	0	0	0	0	0	
		Housing Inv			0	0	0	0	0	0	0	0	0	0.0	
		VDL Inv			6	6	6	6	6	6	6	6	6	n/a	
<b>Hidden Island (237)</b> \$210-\$280 65'	DNW-Carrltn BO 3Q06	Starts			0	0	0	0	0	0	0	0	0	0	
		Closings			0	0	0	0	0	0	0	0	0	0	
		Housing Inv			0	0	0	0	0	0	0	0	0	0.0	
		VDL Inv			0	0	0	0	0	0	0	0	0	0.0	
<b>Hidden Valley Estate (8)</b> \$160-\$550 100'-224'	DNW-FlwrMnd BO 2Q08	Starts			0	0	0	0	0	0	0	0	0	0	
		Closings			0	0	0	0	0	0	0	0	0	0	
		Housing Inv			0	0	0	0	0	0	0	0	0	0.0	
		VDL Inv			0	0	0	0	0	0	0	0	0	0.0	
<b>High Meadow (Flower (2))</b> \$700-\$963 120'	DNW-FlwrMnd BO 4Q20	Starts			0	0	0	0	0	0	0	0	0	0	
		Closings			0	1	0	0	0	0	0	0	0	0	
		Housing Inv			1	0	0	0	0	0	0	0	0	0.0	
		VDL Inv			0	0	0	0	0	0	0	0	0	0.0	
<b>Highland Court (78)</b> \$471-\$656 50'-70'	DNW-FlwrMnd BO 1Q21	Starts			10	3	0	0	0	0	0	0	0	0	
		Closings			7	15	8	0	0	0	0	0	0	0	
		Housing Inv			20	8	0	0	0	0	0	0	0	0.0	
		VDL Inv			3	0	0	0	0	0	0	0	0	0.0	
<b>Highland Lakes (Lewi (163))</b> \$200-\$235 60'-61'	DNW-Lewisvl BO 2Q01	Starts			0	0	0	0	0	0	0	0	0	0	
		Closings			0	0	0	0	0	0	0	0	0	0	
		Housing Inv			0	0	0	0	0	0	0	0	0	0.0	
		VDL Inv			0	0	0	0	0	0	0	0	0	0.0	

Dallas/Ft. Worth Residential Survey (3Q22)

Copyright Metrostudy

Page 11 of 31

**metrstudy**  
A Hanleywood Company

Sales: 1-800-227-8839

\*Inventory Supply = Housing Inv/(Annual Closings/12)  
Vacant Developed Lot Supply = VDL Inv/(Annual Starts/12)

N/A indicates Inventory is present but cannot calculate months of supply without starts or closings (see above).

# Quarterly Activity & Inventory Report

## Lewisville ISD

Sorted By Subdivision

Subdivision Name (Map No)	Sub Area	Price Range	Lot Size	Status	3Q20	4Q20	1Q21	2Q21	3Q21	4Q21	1Q22	2Q22	3Q22	Ann. Rates/ *Inv. Supply
<b>Highland Oaks (Highl (70))</b>	DNW-HighVil	\$729-\$754	95'	Act 1Q09	0	0	0	0	0	1	0	0	0	1
				Starts	0	0	0	0	0	1	0	0	0	1
				Closings	0	0	0	0	0	0	0	0	0	0
				Housing Inv	0	0	0	0	0	1	1	1	1	n/a
				VDL Inv	1	1	1	1	1	0	0	0	0	0.0
<b>Highland Shores (77)</b>	DNW-HighVil	\$235-\$750	60'-110'	Act 2Q84	0	0	0	0	0	1	0	0	0	1
				Starts	0	0	0	0	0	1	0	0	0	1
				Closings	0	0	0	0	0	0	0	0	0	0
				Housing Inv	0	0	0	0	0	1	1	1	1	n/a
				VDL Inv	5	5	5	5	5	4	4	3	3	36.0 mos
<b>Highland Terraces (L (212))</b>	DNW-Lewisvl	\$366-\$391	36'	BO 4Q21	10	1	0	0	1	0	0	0	0	0
				Starts	10	1	0	0	1	0	0	0	0	0
				Closings	2	14	0	0	1	1	0	0	0	1
				Housing Inv	14	1	1	1	1	0	0	0	0	0.0
				VDL Inv	2	1	1	1	0	0	0	0	0	0.0
<b>Highlands/The (Lewis (146))</b>	DNW-Lewisvl	\$95-\$274	70'-100'	BO 2Q07	0	0	0	0	0	0	0	0	0	0
				Starts	0	0	0	0	0	0	0	0	0	0
				Closings	0	0	0	0	0	0	0	0	0	0
				Housing Inv	0	0	0	0	0	0	0	0	0	0.0
				VDL Inv	0	0	0	0	0	0	0	0	0	0.0
<b>Highpoint Oaks Est. (201)</b>	DNW-Lewisvl	\$336-\$540	50'	BO 4Q18	0	0	0	0	0	0	0	0	0	0
				Starts	0	0	0	0	0	0	0	0	0	0
				Closings	0	0	0	0	0	0	0	0	0	0
				Housing Inv	0	0	0	0	0	0	0	0	0	0.0
				VDL Inv	0	0	0	0	0	0	0	0	0	0.0
<b>Hills @ Prestonwood (327)</b>	DNE-Plano	\$346-\$545	75'-90'	BO 4Q01	0	0	0	0	0	0	0	0	0	0
				Starts	0	0	0	0	0	0	0	0	0	0
				Closings	0	0	0	0	0	0	0	0	0	0
				Housing Inv	0	0	0	0	0	0	0	0	0	0.0
				VDL Inv	0	0	0	0	0	0	0	0	0	0.0
<b>Hills @ Prestonwood (330)</b>	DNE-Plano	\$309-\$370	50'	BO 4Q00	0	0	0	0	0	0	0	0	0	0
				Starts	0	0	0	0	0	0	0	0	0	0
				Closings	0	0	0	0	0	0	0	0	0	0
				Housing Inv	0	0	0	0	0	0	0	0	0	0.0
				VDL Inv	0	0	0	0	0	0	0	0	0	0.0
<b>Hills @ Prestonwood (319)</b>	DNE-Plano	\$242-\$401	75'-90'	BO 2Q01	0	0	0	0	0	0	0	0	0	0
				Starts	0	0	0	0	0	0	0	0	0	0
				Closings	0	0	0	0	0	0	0	0	0	0
				Housing Inv	0	0	0	0	0	0	0	0	0	0.0
				VDL Inv	0	0	0	0	0	0	0	0	0	0.0
<b>Hills @ Prestonwood (316)</b>	DNE-Plano	\$285-\$550	50'	BO 3Q02	0	0	0	0	0	0	0	0	0	0
				Starts	0	0	0	0	0	0	0	0	0	0
				Closings	0	0	0	0	0	0	0	0	0	0
				Housing Inv	0	0	0	0	0	0	0	0	0	0.0
				VDL Inv	0	0	0	0	0	0	0	0	0	0.0
<b>Hills at Indian Cree (238)</b>	DNW-Carrlltn	\$315-\$447	52'-62'	BO 4Q15	0	0	0	0	0	0	0	0	0	0
				Starts	0	0	0	0	0	0	0	0	0	0
				Closings	0	0	0	0	0	0	0	0	0	0
				Housing Inv	0	0	0	0	0	0	0	0	0	0.0
				VDL Inv	0	0	0	0	0	0	0	0	0	0.0

\*Inventory Supply = Housing Inv/(Annual Closings/12)  
Vacant Developed Lot Supply = VDL Inv/(Annual Starts/12)

N/A indicates Inventory is present but cannot calculate months of supply without starts or closings (see above).

Dallas/Ft. Worth Residential Survey (3Q22)

Copyright Metrostudy

Page 12 of 31

**metrystudy**  
A hanleywood Company

Sales: 1-800-227-8839

# Quarterly Activity & Inventory Report

## Lewisville ISD

Sorted By Subdivision

Subdivision Name (Map No)	Sub Area	Price Range	Lot Size	Status	3Q20	4Q20	1Q21	2Q21	3Q21	4Q21	1Q22	2Q22	3Q22	Ann. Rates/ *Inv. Supply
<b>Hills of Kingswood, (282)</b>	DNE-Frisco			Starts	8	9	0	2	27	12	5	13	8	<b>38</b>
\$1460-\$4500	65'-150'	Act 1Q09		Closings	5	2	3	19	0	9	13	12	11	<b>45</b>
<i>Bella Custom Homes/Crest Custom Homes/Grand Homes/Greystone Custom Homebuilders/J Lambert Custom Homes/Laguna Homes/Millennial Design Build/Monaco Homes Ltd/Oak Creek Custom Homes/Premier Renovations/Reynolds Signature Homes/Ron Davis CH/Sovereign Custom</i>				Housing Inv	34	41	38	21	48	51	43	44	41	<b>10.9 mos</b>
				VDL Inv	118	109	109	107	80	76	70	55	54	<b>17.1 mos</b>
<b>Hills of Preston Cre (333)</b>	DNE-Plano			Starts	0	0	0	0	0	0	0	0	0	<b>0</b>
\$450-\$470	75'-100'	BO 2Q01		Closings	0	0	0	0	0	0	0	0	0	<b>0</b>
				Housing Inv	0	0	0	0	0	0	0	0	0	<b>0.0</b>
				VDL Inv	0	0	0	0	0	0	0	0	0	<b>0.0</b>
<b>Hills of Vista Ridge (217)</b>	DNW-Lewisvl			Starts	0	0	0	0	0	0	0	0	0	<b>0</b>
\$336-\$421	50'	BO 4Q17		Closings	0	0	0	0	0	0	0	0	0	<b>0</b>
				Housing Inv	0	0	0	0	0	0	0	0	0	<b>0.0</b>
				VDL Inv	0	0	0	0	0	0	0	0	0	<b>0.0</b>
<b>Hillside of Flower M (5)</b>	DNW-FlwrMnd			Starts	0	0	1	3	0	0	1	5	0	<b>6</b>
\$700-\$1200	110'	Act 2Q18		Closings	0	1	1	2	0	0	2	3	1	<b>6</b>
<i>Nix Custom Homes/Rembert Custom Builders/Victor Myers Custom Homes</i>				Housing Inv	3	2	2	3	3	3	2	4	3	<b>6.0 mos</b>
				VDL Inv	23	23	22	19	19	19	18	13	13	<b>26.0 mos</b>
<b>Homestead @ Carrollt (274)</b>	DNW-Carrlltn			Starts	0	0	0	0	0	0	0	0	0	<b>0</b>
\$192-\$600	55'-127'	BO 2Q08		Closings	0	0	0	0	0	0	0	0	0	<b>0</b>
				Housing Inv	0	0	0	0	0	0	0	0	0	<b>0.0</b>
				VDL Inv	0	0	0	0	0	0	0	0	0	<b>0.0</b>
<b>Hunter's Glen (Flowe (119)</b>	DNW-FlwrMnd			Starts	0	0	0	0	0	0	0	0	0	<b>0</b>
\$539-\$680	85'	BO 4Q18		Closings	0	0	0	0	0	0	0	0	0	<b>0</b>
				Housing Inv	0	0	0	0	0	0	0	0	0	<b>0.0</b>
				VDL Inv	0	0	0	0	0	0	0	0	0	<b>0.0</b>
<b>Hunters Glen (Lewisv (175)</b>	DNW-Lewisvl			Starts	0	0	0	0	0	0	0	0	0	<b>0</b>
\$60-\$144	40'	BO 3Q00		Closings	0	0	0	0	0	0	0	0	0	<b>0</b>
				Housing Inv	0	0	0	0	0	0	0	0	0	<b>0.0</b>
				VDL Inv	0	0	0	0	0	0	0	0	0	<b>0.0</b>
<b>Immel Estates (4)</b>	DNW-FlwrMnd			Starts	0	0	0	0	0	0	0	0	0	<b>0</b>
\$549-\$563	200'-216'	BO 3Q04		Closings	0	0	0	0	0	0	0	0	0	<b>0</b>
				Housing Inv	0	0	0	0	0	0	0	0	0	<b>0.0</b>
				VDL Inv	0	0	0	0	0	0	0	0	0	<b>0.0</b>
<b>Indian Creek Meadows (276)</b>	DNW-Carrlltn			Starts	0	0	0	0	0	0	0	0	0	<b>0</b>
\$147-\$190	50'	BO 2Q03		Closings	0	0	0	0	0	0	0	0	0	<b>0</b>
				Housing Inv	0	0	0	0	0	0	0	0	0	<b>0.0</b>
				VDL Inv	0	0	0	0	0	0	0	0	0	<b>0.0</b>
<b>Indian Creek/Cedar E (232)</b>	DNW-Carrlltn			Starts	0	0	0	0	0	0	0	0	0	<b>0</b>
\$160-\$229	65'-80'	BO 2Q01		Closings	0	0	0	0	0	0	0	0	0	<b>0</b>
				Housing Inv	0	0	0	0	0	0	0	0	0	<b>0.0</b>
				VDL Inv	0	0	0	0	0	0	0	0	0	<b>0.0</b>

Dallas/Ft. Worth Residential Survey (3Q22)

Copyright Metrostudy

Page 13 of 31

\*Inventory Supply = Housing Inv/(Annual Closings/12)  
Vacant Developed Lot Supply = VDL Inv/(Annual Starts/12)

N/A indicates Inventory is present but cannot calculate months of supply without starts or closings (see above).

**metrstudy**  
A hanleywood Company

Sales: 1-800-227-8839

# Quarterly Activity & Inventory Report

## Lewisville ISD

Sorted By Subdivision

Subdivision Name (Map No)	Sub Area	Status	3Q20	4Q20	1Q21	2Q21	3Q21	4Q21	1Q22	2Q22	3Q22	Ann. Rates/ *Inv. Supply	
<b>Indian Creek/Elm Woo (231)</b> \$173-\$229      65'-73'	DNW-Carrltn BO 4Q01	Starts	0	0	0	0	0	0	0	0	0	0	
		Closings	0	0	0	0	0	0	0	0	0	0	0
		Housing Inv	0	0	0	0	0	0	0	0	0	0	0.0
		VDL Inv	0	0	0	0	0	0	0	0	0	0	0.0
<b>Indian Creek/Indian (235)</b> \$188-\$243      65'	DNW-Carrltn BO 4Q02	Starts	0	0	0	0	0	0	0	0	0	0	
		Closings	0	0	0	0	0	0	0	0	0	0	0
		Housing Inv	0	0	0	0	0	0	0	0	0	0	0.0
		VDL Inv	0	0	0	0	0	0	0	0	0	0	0.0
<b>Indian Creek/Oakwood (229)</b> \$168-\$197      65'	DNW-Carrltn BO 2Q01	Starts	0	0	0	0	0	0	0	0	0	0	
		Closings	0	0	0	0	0	0	0	0	0	0	0
		Housing Inv	0	0	0	0	0	0	0	0	0	0	0.0
		VDL Inv	0	0	0	0	0	0	0	0	0	0	0.0
<b>Kathryn Commons Addn (214)</b> \$140-\$180      17'	DNW-Lewisvl BO 2Q12	Starts	0	0	0	0	0	0	0	0	0	0	
		Closings	0	0	0	0	0	0	0	0	0	0	0
		Housing Inv	0	0	0	0	0	0	0	0	0	0	0.0
		VDL Inv	0	0	0	0	0	0	0	0	0	0	0.0
<b>Kensington Park Esta (16)</b> \$900-\$950      290'	DNW-FlwrMnd BO 4Q01	Starts	0	0	0	0	0	0	0	0	0	0	
		Closings	0	0	0	0	0	0	0	0	0	0	0
		Housing Inv	0	0	0	0	0	0	0	0	0	0	0.0
		VDL Inv	0	0	0	0	0	0	0	0	0	0	0.0
<b>Kensington Place (305)</b> \$632-\$1065      50'-70' <i>Darling Homes/K. Hovnanian Homes</i>	DNW-Carrltn Act 4Q21	Starts	0	0	0	0	0	0	1	14	27	42	
		Closings	0	0	0	0	0	0	0	0	0	0	0
		Housing Inv	0	0	0	0	0	0	1	15	42	42	n/a
		VDL Inv	0	0	0	0	0	95	94	81	54	54	15.4 mos
<b>Kings Gate (Plano) (324)</b> \$1900-\$6500      162'	DNE-Plano Act 1Q96	Starts	0	0	1	0	0	2	0	0	0	2	
		Closings	0	0	0	0	0	0	0	0	0	0	0
		Housing Inv	0	0	1	1	1	3	3	3	3	3	n/a
		VDL Inv	5	5	4	4	4	2	2	2	2	2	12.0 mos
<b>Kings Grant Addition (255)</b> \$399-\$409      53'-55'	DNW-Lewisvl BO 1Q15	Starts	0	0	0	0	0	0	0	0	0	0	
		Closings	0	0	0	0	0	0	0	0	0	0	0
		Housing Inv	0	0	0	0	0	0	0	0	0	0	0.0
		VDL Inv	0	0	0	0	0	0	0	0	0	0	0.0
<b>Kings Ridge Addition (314)</b> \$269-\$1380      50'-90'	DNE-Plano BO 2Q17	Starts	0	0	0	0	0	0	0	0	0	0	
		Closings	0	0	0	0	0	0	0	0	0	0	0
		Housing Inv	0	0	0	0	0	0	0	0	0	0	0.0
		VDL Inv	0	0	0	0	0	0	0	0	0	0	0.0
<b>Ladera Highland Vill (61)</b> \$358-\$469      42'	DNW-HighVil BO 3Q21	Starts	3	8	4	4	0	0	0	0	0	0	
		Closings	7	8	3	6	8	0	0	0	0	0	0
		Housing Inv	9	9	10	8	0	0	0	0	0	0	0.0
		VDL Inv	16	8	4	0	0	0	0	0	0	0	0.0
<b>Lake Forest Estates (76)</b> \$230-\$276      75'-77'	DNW-FlwrMnd BO 1Q02	Starts	0	0	0	0	0	0	0	0	0	0	
		Closings	0	0	0	0	0	0	0	0	0	0	0
		Housing Inv	0	0	0	0	0	0	0	0	0	0	0.0
		VDL Inv	0	0	0	0	0	0	0	0	0	0	0.0

Dallas/Ft. Worth Residential Survey (3Q22)

Copyright Metrostudy

Page 14 of 31

**metrstudy**  
A Hanleywood Company

Sales: 1-800-227-8839

\*Inventory Supply = Housing Inv/(Annual Closings/12)  
Vacant Developed Lot Supply = VDL Inv/(Annual Starts/12)

N/A indicates Inventory is present but cannot calculate months of supply without starts or closings (see above).

# Quarterly Activity & Inventory Report

## Lewisville ISD

Sorted By Subdivision

Subdivision Name (Map No)	Sub Area	Status	3Q20	4Q20	1Q21	2Q21	3Q21	4Q21	1Q22	2Q22	3Q22	Ann. Rates/ *Inv. Supply
<b>Lake Hill Estates (7)</b>	DNW-FlwrMnd	Starts	0	0	0	0	0	0	0	0	0	0
\$300-\$305	145'	BO 2Q01	Closings	0	0	0	0	0	0	0	0	0
			Housing Inv	0	0	0	0	0	0	0	0	0.0
			VDL Inv	0	0	0	0	0	0	0	0	0.0
<b>Lakemont Addition (98)</b>	DNW-FlwrMnd	Starts	0	0	0	0	0	0	0	0	0	0
\$289-\$315	95'	BO 3Q05	Closings	0	0	0	0	0	0	0	0	0
			Housing Inv	0	0	0	0	0	0	0	0	0.0
			VDL Inv	0	0	0	0	0	0	0	0	0.0
<b>Lakeridge Townhomes (247)</b>	DNW-Lewisvl	Starts	0	0	0	0	0	0	0	0	0	0
\$256-\$270	22'	Act 2Q06	Closings	0	0	0	0	0	0	0	0	0
<i>Sumeer Homes</i>			Housing Inv	0	0	0	0	0	0	0	0	0.0
			VDL Inv	1	1	1	1	1	1	1	1	n/a
<b>Lakes Legacy/Heritag (313)</b>	DNE-Frisco	Starts	0	0	0	0	0	0	0	0	0	0
\$212-\$412	50'-70'	BO 2Q07	Closings	0	0	0	0	0	0	0	0	0
			Housing Inv	0	0	0	0	0	0	0	0	0.0
			VDL Inv	0	0	0	0	0	0	0	0	0.0
<b>Lakes Legacy/Lakehil (328)</b>	DNE-Frisco	Starts	0	0	0	0	0	0	0	0	0	0
\$284-\$423	65'-78'	BO 3Q03	Closings	0	0	0	0	0	0	0	0	0
			Housing Inv	0	0	0	0	0	0	0	0	0.0
			VDL Inv	0	0	0	0	0	0	0	0	0.0
<b>Lakes Legacy/The Lak (326)</b>	DNE-Frisco	Starts	0	0	0	0	0	0	0	0	0	0
\$525-\$1250	77'	BO 1Q12	Closings	0	0	0	0	0	0	0	0	0
			Housing Inv	0	0	0	0	0	0	0	0	0.0
			VDL Inv	0	0	0	0	0	0	0	0	0.0
<b>Lakes Legacy/The Vil (323)</b>	DNE-Frisco	Starts	0	0	0	0	0	0	0	0	0	0
\$269-\$725	55'	BO 4Q15	Closings	0	0	0	0	0	0	0	0	0
			Housing Inv	0	0	0	0	0	0	0	0	0.0
			VDL Inv	0	0	0	0	0	0	0	0	0.0
<b>Lakeside Center Town (104)</b>	DNW-FlwrMnd	Starts	0	0	0	0	8	0	0	0	0	0
\$500-\$600	27'	BO 2Q22	Closings	0	0	0	0	0	0	8	0	8
			Housing Inv	0	0	0	8	8	8	0	0	0.0
			VDL Inv	0	0	0	0	0	0	0	0	0.0
<b>Lakeside Crossing (169)</b>	DNW-Lewisvl	Starts	0	0	0	0	0	0	0	0	0	0
\$0-\$0	25'	Future	Closings	0	0	0	0	0	0	0	0	0
			Housing Inv	0	0	0	0	0	0	0	0	0.0
			VDL Inv	0	0	0	0	0	0	0	0	0.0
<b>Lakeside Crossing To (105)</b>	DNW-FlwrMnd	Starts	5	0	0	4	0	0	0	0	0	0
\$660-\$765	32'	Act 3Q20	Closings	0	0	0	5	0	0	0	0	0
<i>Encore Luxury Homes Texas</i>			Housing Inv	5	5	5	9	4	4	4	4	n/a
			VDL Inv	10	10	10	6	6	6	6	6	n/a
<b>Lakeside DFW (Flower) (86)</b>	DNW-FlwrMnd	Starts	0	0	0	0	0	0	0	0	0	0
\$382-\$976	30'-65'	BO 4Q17	Closings	0	0	0	0	0	0	0	0	0
			Housing Inv	0	0	0	0	0	0	0	0	0.0
			VDL Inv	0	0	0	0	0	0	0	0	0.0

Dallas/Ft. Worth Residential Survey (3Q22)

Copyright Metrostudy

Page 15 of 31

**metrstudy**  
A hanleywood Company

Sales: 1-800-227-8839

\*Inventory Supply = Housing Inv/(Annual Closings/12)  
Vacant Developed Lot Supply = VDL Inv/(Annual Starts/12)

N/A indicates Inventory is present but cannot calculate months of supply without starts or closings (see above).

# Quarterly Activity & Inventory Report

## Lewisville ISD

Sorted By Subdivision

Subdivision Name (Map No)	Sub Area	Price Range	Lot Size	Status	3Q20	4Q20	1Q21	2Q21	3Q21	4Q21	1Q22	2Q22	3Q22	Ann. Rates/ *Inv. Supply	
<b>Lakeside Tower (92)</b> \$1152-\$3854	DNW-FlwrMnd Act 2Q19	Starts			0	0	0	0	0	0	0	0	0	0	
		Closings			20	2	8	5	1	1	0	0	1	2	
		Housing Inv			21	19	11	6	5	4	4	4	4	3	18.0 mos
		VDL Inv			0	0	0	0	0	0	0	0	0	0	0.0
<b>Lakeside Village (102)</b> \$1000-\$1250 40' VanTrease Architectural Design	DNW-FlwrMnd Act 4Q21	Starts			0	0	0	0	0	0	0	0	0	0	
		Closings			0	0	0	0	0	0	0	0	0	0	0
		Housing Inv			0	0	0	0	0	0	0	0	0	0	0.0
		VDL Inv			0	0	0	0	0	57	57	57	57	57	n/a
<b>Lakeside Villas (96)</b> \$650-\$750 35'	DNW-FlwrMnd Act 1Q22	Starts			0	0	0	0	0	0	0	7	0	7	
		Closings			0	0	0	0	0	0	0	0	0	0	0
		Housing Inv			0	0	0	0	0	0	0	7	7	7	n/a
		VDL Inv			0	0	0	0	0	0	7	0	0	0	0.0
<b>Lakewood (Flower Mou (125))</b> \$0-\$0 31'-50'	DNW-FlwrMnd Future	Starts			0	0	0	0	0	0	0	0	0	0	
		Closings			0	0	0	0	0	0	0	0	0	0	0
		Housing Inv			0	0	0	0	0	0	0	0	0	0	0.0
		VDL Inv			0	0	0	0	0	0	0	0	0	0	0.0
<b>Lakewood Addition (H (88))</b> \$270-\$350 150'	DNW-HighVil BO 1Q00	Starts			0	0	0	0	0	0	0	0	0	0	
		Closings			0	0	0	0	0	0	0	0	0	0	0
		Housing Inv			0	0	0	0	0	0	0	0	0	0	0.0
		VDL Inv			0	0	0	0	0	0	0	0	0	0	0.0
<b>Lakewood Hills Addit (277)</b> \$400-\$825 50'-80' Beazer Homes/Lennar Homes/Pulte Homes	DNW-Lewisvl Act 4Q17	Starts			6	10	4	13	33	25	18	36	33	112	
		Closings			11	3	9	4	7	4	10	34	15	63	
		Housing Inv			12	19	14	23	49	70	78	80	98	18.7 mos	
		VDL Inv			25	15	11	97	64	204	186	145	112	12.0 mos	
<b>Landing @ Northshore (9)</b> \$920-\$2800 240'-283'	DNW-FlwrMnd BO 4Q18	Starts			0	0	0	0	0	0	0	0	0	0	
		Closings			0	0	0	0	0	0	0	0	0	0	0
		Housing Inv			0	0	0	0	0	0	0	0	0	0	0.0
		VDL Inv			0	0	0	0	0	0	0	0	0	0	0.0
<b>Larry Ho Addition (193)</b> \$0-\$0 21'	DNW-Lewisvl Future	Starts			0	0	0	0	0	0	0	0	0	0	
		Closings			0	0	0	0	0	0	0	0	0	0	0
		Housing Inv			0	0	0	0	0	0	0	0	0	0	0.0
		VDL Inv			0	0	0	0	0	0	0	0	0	0	0.0
<b>Legends, The (Colony (296))</b> \$136-\$252 40'-80'	DNW-Colony BO 4Q06	Starts			0	0	0	0	0	0	0	0	0	0	
		Closings			0	0	0	0	0	0	0	0	0	0	0
		Housing Inv			0	0	0	0	0	0	0	0	0	0	0.0
		VDL Inv			0	0	0	0	0	0	0	0	0	0	0.0
<b>Legends, The (Flower (59))</b> \$418-\$445 50' Village Builders Inc	DNW-FlwrMnd Act 1Q15	Starts			0	0	0	0	0	0	0	0	0	0	
		Closings			0	0	0	0	0	0	0	0	0	0	0
		Housing Inv			0	0	0	0	0	0	0	0	0	0	0.0
		VDL Inv			1	1	1	1	1	1	1	1	1	1	n/a
<b>Lexington Glen (145)</b> \$149-\$179 40'	DNW-FlwrMnd BO 2Q06	Starts			0	0	0	0	0	0	0	0	0	0	
		Closings			0	0	0	0	0	0	0	0	0	0	0
		Housing Inv			0	0	0	0	0	0	0	0	0	0	0.0
		VDL Inv			0	0	0	0	0	0	0	0	0	0	0.0

Dallas/Ft. Worth Residential Survey (3Q22)

Copyright Metrostudy

Page 16 of 31

**metrstudy**  
A hanleywood Company

Sales: 1-800-227-8839

\*Inventory Supply = Housing Inv/(Annual Closings/12)  
Vacant Developed Lot Supply = VDL Inv/(Annual Starts/12)

N/A indicates Inventory is present but cannot calculate months of supply without starts or closings (see above).



# Quarterly Activity & Inventory Report

## Lewisville ISD

Sorted By Subdivision

Subdivision Name (Map No)	Sub Area	Price Range	Lot Size	Status	3Q20	4Q20	1Q21	2Q21	3Q21	4Q21	1Q22	2Q22	3Q22	Ann. Rates/ *Inv. Supply	
<b>Liberty Park (26)</b> \$600-\$900 70'	DNW-FlwrMnd BO 4Q21	Starts			0	1	0	0	0	0	0	0	0	0	
		Closings			0	1	0	0	0	1	0	0	0	0	1
		Housing Inv			1	1	1	1	1	0	0	0	0	0	0.0
		VDL Inv			1	0	0	0	0	0	0	0	0	0	0.0
<b>MacArthur &amp; 121 (223)</b> \$0-\$0 25'	DNW-Lewisvl Future	Starts			0	0	0	0	0	0	0	0	0	0	
		Closings			0	0	0	0	0	0	0	0	0	0	0
		Housing Inv			0	0	0	0	0	0	0	0	0	0	0.0
		VDL Inv			0	0	0	0	0	0	0	0	0	0	0.0
<b>Magnolia Court (132)</b> \$623-\$725 80'	DNW-FlwrMnd BO 4Q21	Starts			0	4	12	13	0	0	0	0	0	0	
		Closings			0	0	1	11	1	16	0	0	0	0	16
		Housing Inv			0	4	15	17	16	0	0	0	0	0	0.0
		VDL Inv			0	25	13	0	0	0	0	0	0	0	0.0
<b>Magnolia Park (Flowe 31)</b> \$693-\$800 85'	DNW-FlwrMnd BO 4Q18	Starts			0	0	0	0	0	0	0	0	0	0	
		Closings			0	0	0	0	0	0	0	0	0	0	0
		Housing Inv			0	0	0	0	0	0	0	0	0	0	0.0
		VDL Inv			0	0	0	0	0	0	0	0	0	0	0.0
<b>Main Street Village (213)</b> \$139-\$158 22'	DNW-Lewisvl BO 1Q08	Starts			0	0	0	0	0	0	0	0	0	0	
		Closings			0	0	0	0	0	0	0	0	0	0	0
		Housing Inv			0	0	0	0	0	0	0	0	0	0	0.0
		VDL Inv			0	0	0	0	0	0	0	0	0	0	0.0
<b>Mallard Cove Estates (135)</b> \$210-\$320 84'	DNW-FlwrMnd BO 3Q08	Starts			0	0	0	0	0	0	0	0	0	0	
		Closings			0	0	0	0	0	0	0	0	0	0	0
		Housing Inv			0	0	0	0	0	0	0	0	0	0	0.0
		VDL Inv			0	0	0	0	0	0	0	0	0	0	0.0
<b>Manors at Forestbroo (211)</b> \$335-\$390 26' North American Land Company	DNW-Lewisvl Act 4Q18	Starts			0	13	4	9	11	4	1	6	8	19	
		Closings			2	12	0	11	0	13	0	0	0	13	
		Housing Inv			21	22	26	24	35	26	27	33	41	37.8 mos	
		VDL Inv			88	75	71	62	51	47	46	40	32	20.2 mos	
<b>Manors at Vista Ridg (224)</b> \$320-\$360 28'	DNW-Lewisvl BO 1Q19	Starts			0	0	0	0	0	0	0	0	0	0	
		Closings			0	0	0	0	0	0	0	0	0	0	
		Housing Inv			0	0	0	0	0	0	0	0	0	0	0.0
		VDL Inv			0	0	0	0	0	0	0	0	0	0	0.0
<b>Meadow Lake (162)</b> \$100-\$160 65'	DNW-Lewisvl BO 4Q01	Starts			0	0	0	0	0	0	0	0	0	0	
		Closings			0	0	0	0	0	0	0	0	0	0	0
		Housing Inv			0	0	0	0	0	0	0	0	0	0	0.0
		VDL Inv			0	0	0	0	0	0	0	0	0	0	0.0
<b>Meridian (Lewisville) (257)</b> \$201-\$391 53'-80'	DNW-Lewisvl BO 1Q10	Starts			0	0	0	0	0	0	0	0	0	0	
		Closings			0	0	0	0	0	0	0	0	0	0	0
		Housing Inv			0	0	0	0	0	0	0	0	0	0	0.0
		VDL Inv			0	0	0	0	0	0	0	0	0	0	0.0
<b>Midway Park Addition (184)</b> \$80-\$100 50'	DNW-Lewisvl BO 3Q05	Starts			0	0	0	0	0	0	0	0	0	0	
		Closings			0	0	0	0	0	0	0	0	0	0	0
		Housing Inv			0	0	0	0	0	0	0	0	0	0	0.0
		VDL Inv			0	0	0	0	0	0	0	0	0	0	0.0

Dallas/Ft. Worth Residential Survey (3Q22)

Copyright Metrostudy

Page 17 of 31

**metrstudy**  
A hanleywood Company

Sales: 1-800-227-8839

\*Inventory Supply = Housing Inv/(Annual Closings/12)  
Vacant Developed Lot Supply = VDL Inv/(Annual Starts/12)

N/A indicates Inventory is present but cannot calculate months of supply without starts or closings (see above).

# Quarterly Activity & Inventory Report

## Lewisville ISD

Sorted By Subdivision

Subdivision Name (Map No)	Sub Area	Price Range	Lot Size	Status	3Q20	4Q20	1Q21	2Q21	3Q21	4Q21	1Q22	2Q22	3Q22	Ann. Rates/ *Inv. Supply	
<b>Milton Street Townho (191)</b> \$140-\$210      25'	DNW-Lewisvl BO 2Q08	Starts			0	0	0	0	0	0	0	0	0	0	
		Closings			0	0	0	0	0	0	0	0	0	0	0
		Housing Inv			0	0	0	0	0	0	0	0	0	0	0.0
		VDL Inv			0	0	0	0	0	0	0	0	0	0	0.0
<b>Moore Farm (262)</b> \$202-\$650      50'-70'	DNW-Carrlltn BO 1Q08	Starts			0	0	0	0	0	0	0	0	0	0	
		Closings			0	0	0	0	0	0	0	0	0	0	0
		Housing Inv			0	0	0	0	0	0	0	0	0	0	0.0
		VDL Inv			0	0	0	0	0	0	0	0	0	0	0.0
<b>Mustang Park (292)</b> \$340-\$632      50'-80'	DNW-Carrlltn BO 2Q18	Starts			0	0	0	0	0	0	0	0	0	0	
		Closings			0	0	0	0	0	0	0	0	0	0	0
		Housing Inv			0	0	0	0	0	0	0	0	0	0	0.0
		VDL Inv			0	0	0	0	0	0	0	0	0	0	0.0
<b>Mustang Park Townhom (302)</b> \$302-\$380      22'-35'	DNW-Carrlltn BO 4Q18	Starts			0	0	0	0	0	0	0	0	0	0	
		Closings			0	0	0	0	0	0	0	0	0	0	0
		Housing Inv			0	0	0	0	0	0	0	0	0	0	0.0
		VDL Inv			0	0	0	0	0	0	0	0	0	0	0.0
<b>Mustang Park/Latera (297)</b> \$382-\$422      45'	DNW-Carrlltn BO 4Q20	Starts			0	0	0	0	0	0	0	0	0	0	
		Closings			16	1	0	0	0	0	0	0	0	0	0
		Housing Inv			1	0	0	0	0	0	0	0	0	0	0.0
		VDL Inv			0	0	0	0	0	0	0	0	0	0	0.0
<b>Myers Ridge (233)</b> \$0-\$0      40'-50'	DNW-Lewisvl Future	Starts			0	0	0	0	0	0	0	0	0	0	
		Closings			0	0	0	0	0	0	0	0	0	0	0
		Housing Inv			0	0	0	0	0	0	0	0	0	0	0.0
		VDL Inv			0	0	0	0	0	0	0	0	0	0	0.0
<b>Normandy Estates (331)</b> \$1250-\$2680      60'-110' <i>Alford Homes/Mark Smith Custom Homes/Sharif &amp; Munir Custom Homes/Starside Custom Builders</i>	DNE-Plano Act 4Q08	Starts			0	4	0	2	2	2	2	1	0	5	
		Closings			3	2	0	6	1	1	0	8	2	11	
		Housing Inv			8	10	10	6	7	8	10	3	1	1.1 mos	
		VDL Inv			13	9	9	7	5	3	1	0	0	0.0	
<b>Normandy Estates Tow (322)</b> \$430-\$470      40'	DNE-Plano BO 4Q16	Starts			0	0	0	0	0	0	0	0	0	0	
		Closings			0	0	0	0	0	0	0	0	0	0	
		Housing Inv			0	0	0	0	0	0	0	0	0	0	0.0
		VDL Inv			0	0	0	0	0	0	0	0	0	0	0.0
<b>Normandy Village (179)</b> \$509-\$527      25' <i>Megatel Homes</i>	DNW-Lewisvl Act 4Q19	Starts			0	0	7	6	4	7	0	0	41	48	
		Closings			3	6	1	5	0	0	0	6	0	6	
		Housing Inv			13	7	13	14	18	25	25	19	60	120.0 mos	
		VDL Inv			65	65	58	52	48	41	41	41	0	0.0	
<b>North Shore Villas (189)</b> \$144-\$195      50'-52'	DNW-Lewisvl BO 3Q13	Starts			0	0	0	0	0	0	0	0	0	0	
		Closings			0	0	0	0	0	0	0	0	0	0	
		Housing Inv			0	0	0	0	0	0	0	0	0	0	0.0
		VDL Inv			0	0	0	0	0	0	0	0	0	0	0.0

# Quarterly Activity & Inventory Report

## Lewisville ISD

Sorted By Subdivision

Subdivision Name (Map No)	Sub Area	Price Range	Lot Size	Status	3Q20	4Q20	1Q21	2Q21	3Q21	4Q21	1Q22	2Q22	3Q22	Ann. Rates/ *Inv. Supply	
<b>Oak Creek Estates (L (183))</b> \$150-\$155 100'	DNW-Lewisvl BO 2Q01	Starts			0	0	0	0	0	0	0	0	0	0	
		Closings			0	0	0	0	0	0	0	0	0	0	0
		Housing Inv			0	0	0	0	0	0	0	0	0	0	0.0
		VDL Inv			0	0	0	0	0	0	0	0	0	0	0.0
<b>Oak Park Addn (Flwr (137))</b> \$135-\$165 60'	DNW-FlwrMnd BO 2Q00	Starts			0	0	0	0	0	0	0	0	0	0	
		Closings			0	0	0	0	0	0	0	0	0	0	0
		Housing Inv			0	0	0	0	0	0	0	0	0	0	0.0
		VDL Inv			0	0	0	0	0	0	0	0	0	0	0.0
<b>Oakbend Estates (Lew (219))</b> \$450-\$550 30'	DNW-Lewisvl Act 1Q21	Starts			0	0	5	5	0	4	0	6	0	10	
		Closings			0	0	0	0	3	2	0	9	0	11	
		Housing Inv			0	0	5	10	7	9	9	6	6	6.5 mos	
		VDL Inv			0	0	22	17	17	13	13	7	7	8.4 mos	
<b>Oakbridge at Flower (106)</b> \$916-\$959 90'	DNW-FlwrMnd BO 3Q22	Starts			7	8	0	7	7	0	1	0	0	1	
		Closings			5	11	0	10	5	7	5	5	1	18	
		Housing Inv			21	18	18	15	17	10	6	1	0	0.0	
		VDL Inv			23	15	15	8	1	1	0	0	0	0.0	
<b>Oakbridge Crossing (101)</b> \$0-\$0 80'	DNW-FlwrMnd Future	Starts			0	0	0	0	0	0	0	0	0	0	
		Closings			0	0	0	0	0	0	0	0	0	0	
		Housing Inv			0	0	0	0	0	0	0	0	0	0.0	
		VDL Inv			0	0	0	0	0	0	0	0	0	0.0	
<b>Oaks of Bellaire (160)</b> \$117-\$178 70'-75'	DNW-Lewisvl BO 1Q01	Starts			0	0	0	0	0	0	0	0	0	0	
		Closings			0	0	0	0	0	0	0	0	0	0	
		Housing Inv			0	0	0	0	0	0	0	0	0	0.0	
		VDL Inv			0	0	0	0	0	0	0	0	0	0.0	
<b>Oaks of Highland Vil (124)</b> \$200-\$250 80'	DNW-HighVil BO 2Q00	Starts			0	0	0	0	0	0	0	0	0	0	
		Closings			0	0	0	0	0	0	0	0	0	0	
		Housing Inv			0	0	0	0	0	0	0	0	0	0.0	
		VDL Inv			0	0	0	0	0	0	0	0	0	0.0	
<b>Oaks of the Southwes (192)</b> \$160-\$175 25'	DNW-Lewisvl BO 4Q04	Starts			0	0	0	0	0	0	0	0	0	0	
		Closings			0	0	0	0	0	0	0	0	0	0	
		Housing Inv			0	0	0	0	0	0	0	0	0	0.0	
		VDL Inv			0	0	0	0	0	0	0	0	0	0.0	
<b>One Place (127)</b> \$93-\$110 40'	DNW-FlwrMnd BO 2Q00	Starts			0	0	0	0	0	0	0	0	0	0	
		Closings			0	0	0	0	0	0	0	0	0	0	
		Housing Inv			0	0	0	0	0	0	0	0	0	0.0	
		VDL Inv			0	0	0	0	0	0	0	0	0	0.0	
<b>Orchard Flower (165)</b> \$433-\$587 50'-60'	DNW-FlwrMnd BO 3Q21	Starts			2	10	0	1	0	0	0	0	0	0	
		Closings			9	8	1	15	4	0	0	0	0	0	
		Housing Inv			17	19	18	4	0	0	0	0	0	0.0	
		VDL Inv			11	1	1	0	0	0	0	0	0	0.0	
<b>Orchard Valley Estat (170)</b> \$158-\$160 50'-55'	DNW-Lewisvl BO 4Q00	Starts			0	0	0	0	0	0	0	0	0	0	
		Closings			0	0	0	0	0	0	0	0	0	0	
		Housing Inv			0	0	0	0	0	0	0	0	0	0.0	
		VDL Inv			0	0	0	0	0	0	0	0	0	0.0	

Dallas/Ft. Worth Residential Survey (3Q22)

Copyright Metrostudy

Page 19 of 31

**metrstudy**  
A hanleywood Company

Sales: 1-800-227-8839

\*Inventory Supply = Housing Inv/(Annual Closings/12)  
Vacant Developed Lot Supply = VDL Inv/(Annual Starts/12)

N/A indicates Inventory is present but cannot calculate months of supply without starts or closings (see above).

# Quarterly Activity & Inventory Report

## Lewisville ISD

Sorted By Subdivision

Subdivision Name (Map No)	Sub Area	Price Range	Lot Size	Status	3Q20	4Q20	1Q21	2Q21	3Q21	4Q21	1Q22	2Q22	3Q22	Ann. Rates/ *Inv. Supply
<b>Park Central Terrace (206)</b>	DNW-Lewisvl	\$352-\$367	35'	Starts	0	0	5	12	12	0	0	1	0	1
	Act 2Q20			Closings	0	0	0	0	4	5	1	7	6	19
<i>Windsor Homes</i>				Housing Inv	1	1	6	18	26	21	20	14	8	5.1 mos
				VDL Inv	30	30	25	13	1	1	1	0	0	0.0
<b>Parker Crossing (278)</b>	DNW-Carrlltn	\$0-\$0	41'	Starts	0	0	0	0	0	0	0	0	0	0
	Future			Closings	0	0	0	0	0	0	0	0	0	0
				Housing Inv	0	0	0	0	0	0	0	0	0	0.0
				VDL Inv	0	0	0	0	0	0	0	0	0	0.0
<b>Parker Estates (Plan (306)</b>	DNE-Plano	\$140-\$205	25'-35'	Starts	0	0	0	0	0	0	0	0	0	0
	BO 3Q06			Closings	0	0	0	0	0	0	0	0	0	0
				Housing Inv	0	0	0	0	0	0	0	0	0	0.0
				VDL Inv	0	0	0	0	0	0	0	0	0	0.0
<b>Parker Place (Lewisv (252)</b>	DNW-Lewisvl	\$619-\$700	40'	Starts	0	0	0	0	0	0	2	8	7	17
	Act 4Q21			Closings	0	0	0	0	0	0	0	0	0	0
<i>David Weekley Homes</i>				Housing Inv	0	0	0	0	0	0	2	10	17	n/a
				VDL Inv	0	0	0	0	0	130	128	120	113	79.8 mos
<b>Parks at Austin Ranc (320)</b>	DNW-Colony	\$250-\$255	25'	Starts	0	0	0	0	0	0	0	0	0	0
	BO 1Q07			Closings	0	0	0	0	0	0	0	0	0	0
				Housing Inv	0	0	0	0	0	0	0	0	0	0.0
				VDL Inv	0	0	0	0	0	0	0	0	0	0.0
<b>Parkside at Woodlake (87)</b>	DNW-FlwrMnd	\$455-\$515	50'	Starts	0	0	0	0	0	0	0	0	0	0
	BO 2Q18			Closings	0	0	0	0	0	0	0	0	0	0
				Housing Inv	0	0	0	0	0	0	0	0	0	0.0
				VDL Inv	0	0	0	0	0	0	0	0	0	0.0
<b>Pebble Ridge Estates (147)</b>	DNW-Lewisvl	\$171-\$183	60'	Starts	0	0	0	0	0	0	0	0	0	0
	BO 3Q02			Closings	0	0	0	0	0	0	0	0	0	0
				Housing Inv	0	0	0	0	0	0	0	0	0	0.0
				VDL Inv	0	0	0	0	0	0	0	0	0	0.0
<b>Pecan Meadows Additi (67)</b>	DNW-FlwrMnd	\$272-\$315	106'	Starts	0	0	0	0	0	0	0	0	0	0
	BO 4Q01			Closings	0	0	0	0	0	0	0	0	0	0
				Housing Inv	0	0	0	0	0	0	0	0	0	0.0
				VDL Inv	0	0	0	0	0	0	0	0	0	0.0
<b>Peninsula @ Twin Cov (28)</b>	DNW-FlwrMnd	\$250-\$570	120'-200'	Starts	0	0	0	0	0	0	0	0	0	0
	BO 1Q01			Closings	0	0	0	0	0	0	0	0	0	0
				Housing Inv	0	0	0	0	0	0	0	0	0	0.0
				VDL Inv	0	0	0	0	0	0	0	0	0	0.0
<b>Point Noble (19)</b>	DNW-FlwrMnd	\$899-\$1600	156'	Starts	0	0	0	0	0	0	0	0	0	0
	BO 2Q10			Closings	0	0	0	0	0	0	0	0	0	0
				Housing Inv	0	0	0	0	0	0	0	0	0	0.0
				VDL Inv	0	0	0	0	0	0	0	0	0	0.0
<b>Preserve at Flower M (80)</b>	DNW-FlwrMnd	\$574-\$765	81'	Starts	0	0	0	0	0	0	0	0	0	0
	BO 2Q18			Closings	0	0	0	0	0	0	0	0	0	0
				Housing Inv	0	0	0	0	0	0	0	0	0	0.0
				VDL Inv	0	0	0	0	0	0	0	0	0	0.0

Dallas/Ft. Worth Residential Survey (3Q22)

Copyright Metrostudy

Page 20 of 31

**metrstudy**  
A hanleywood Company

Sales: 1-800-227-8839

\*Inventory Supply = Housing Inv/(Annual Closings/12)  
Vacant Developed Lot Supply = VDL Inv/(Annual Starts/12)

N/A indicates Inventory is present but cannot calculate months of supply without starts or closings (see above).

# Quarterly Activity & Inventory Report

## Lewisville ISD

Sorted By Subdivision

Subdivision Name (Map No)	Sub Area	Price Range	Lot Size	Status	3Q20	4Q20	1Q21	2Q21	3Q21	4Q21	1Q22	2Q22	3Q22	Ann. Rates/ *Inv. Supply	
<b>Preserve at Vista Ri (207)</b> \$269-\$270 28'	DNW-Lewisvl BO 3Q15	Starts			0	0	0	0	0	0	0	0	0	0	
		Closings			0	0	0	0	0	0	0	0	0	0	0
		Housing Inv			0	0	0	0	0	0	0	0	0	0	0.0
		VDL Inv			0	0	0	0	0	0	0	0	0	0	0.0
<b>Prince Estates (15)</b> \$450-\$1000 147'	DNW-FlwrMnd BO 4Q01	Starts			0	0	0	0	0	0	0	0	0	0	
		Closings			0	0	0	0	0	0	0	0	0	0	0
		Housing Inv			0	0	0	0	0	0	0	0	0	0	0.0
		VDL Inv			0	0	0	0	0	0	0	0	0	0	0.0
<b>Quail Creek North (270)</b> \$196-\$310 25'-35'	DNW-Carrlltn BO 4Q13	Starts			0	0	0	0	0	0	0	0	0	0	
		Closings			0	0	0	0	0	0	0	0	0	0	0
		Housing Inv			0	0	0	0	0	0	0	0	0	0	0.0
		VDL Inv			0	0	0	0	0	0	0	0	0	0	0.0
<b>Quail Creek North To (269)</b> \$176-\$182 25'	DNW-Carrlltn BO 2Q11	Starts			0	0	0	0	0	0	0	0	0	0	
		Closings			0	0	0	0	0	0	0	0	0	0	0
		Housing Inv			0	0	0	0	0	0	0	0	0	0	0.0
		VDL Inv			0	0	0	0	0	0	0	0	0	0	0.0
<b>Quail Creek Townhome (271)</b> \$184-\$226 25'-35'	DNW-Carrlltn BO 3Q06	Starts			0	0	0	0	0	0	0	0	0	0	
		Closings			0	0	0	0	0	0	0	0	0	0	0
		Housing Inv			0	0	0	0	0	0	0	0	0	0	0.0
		VDL Inv			0	0	0	0	0	0	0	0	0	0	0.0
<b>Red Hawk Addition (46)</b> \$0-\$0 40'	DNW-FlwrMnd Future	Starts			0	0	0	0	0	0	0	0	0	0	
		Closings			0	0	0	0	0	0	0	0	0	0	0
		Housing Inv			0	0	0	0	0	0	0	0	0	0	0.0
		VDL Inv			0	0	0	0	0	0	0	0	0	0	0.0
<b>Regency Park Additio (43)</b> \$469-\$875 110'-118'	DNW-FlwrMnd BO 2Q18	Starts			0	0	0	0	0	0	0	0	0	0	
		Closings			0	0	0	0	0	0	0	0	0	0	0
		Housing Inv			0	0	0	0	0	0	0	0	0	0	0.0
		VDL Inv			0	0	0	0	0	0	0	0	0	0	0.0
<b>Reserve at Chapel Hi (65)</b> \$767-\$882 65'-89' David Weekley Homes	DNW-HighVil Act 2Q21	Starts			0	0	0	1	17	14	16	11	2	43	
		Closings			0	0	0	0	0	1	6	6	12	25	
		Housing Inv			0	0	0	1	18	31	41	46	36	17.3 mos	
		VDL Inv			0	0	0	71	54	40	24	13	11	3.1 mos	
<b>Reserve at Creekside (128)</b> \$430-\$449 100'	DNW-FlwrMnd BO 4Q02	Starts			0	0	0	0	0	0	0	0	0	0	
		Closings			0	0	0	0	0	0	0	0	0	0	0
		Housing Inv			0	0	0	0	0	0	0	0	0	0	0.0
		VDL Inv			0	0	0	0	0	0	0	0	0	0	0.0
<b>Reserve at Timber Cr (174)</b> \$220-\$227 75'	DNW-Lewisvl BO 3Q03	Starts			0	0	0	0	0	0	0	0	0	0	
		Closings			0	0	0	0	0	0	0	0	0	0	0
		Housing Inv			0	0	0	0	0	0	0	0	0	0	0.0
		VDL Inv			0	0	0	0	0	0	0	0	0	0	0.0
<b>Reserve on Parker (C (289))</b> \$407-\$414 45'	DNW-Carrlltn BO 2Q20	Starts			0	0	0	0	0	0	0	0	0	0	
		Closings			0	0	0	0	0	0	0	0	0	0	0
		Housing Inv			0	0	0	0	0	0	0	0	0	0	0.0
		VDL Inv			0	0	0	0	0	0	0	0	0	0	0.0

Dallas/Ft. Worth Residential Survey (3Q22)

Copyright Metrostudy

Page 21 of 31

**metrstudy**  
A hanleywood Company

Sales: 1-800-227-8839

\*Inventory Supply = Housing Inv/(Annual Closings/12)  
Vacant Developed Lot Supply = VDL Inv/(Annual Starts/12)

N/A indicates Inventory is present but cannot calculate months of supply without starts or closings (see above).

# Quarterly Activity & Inventory Report

## Lewisville ISD

Sorted By Subdivision

Subdivision Name (Map No)	Sub Area	Status	3Q20	4Q20	1Q21	2Q21	3Q21	4Q21	1Q22	2Q22	3Q22	Ann. Rates/ *Inv. Supply	
<b>Reserve on Parker To (286)</b> \$331-\$360 25'	DNW-Carrltn BO 2Q20	Starts	0	0	0	0	0	0	0	0	0	0	
		Closings	0	0	0	0	0	0	0	0	0	0	0
		Housing Inv	0	0	0	0	0	0	0	0	0	0	0.0
		VDL Inv	0	0	0	0	0	0	0	0	0	0	0.0
<b>Ridge at Indian Cree (242)</b> \$420-\$504 50'	DNW-Carrltn BO 4Q20	Starts	0	0	0	0	0	0	0	0	0	0	
		Closings	0	1	0	0	0	0	0	0	0	0	0
		Housing Inv	1	0	0	0	0	0	0	0	0	0	0.0
		VDL Inv	0	0	0	0	0	0	0	0	0	0	0.0
<b>Ridgepointe (267)</b> \$110-\$281 50'-70'	DNW-Colony BO 4Q03	Starts	0	0	0	0	0	0	0	0	0	0	
		Closings	0	0	0	0	0	0	0	0	0	0	0
		Housing Inv	0	0	0	0	0	0	0	0	0	0	0.0
		VDL Inv	0	0	0	0	0	0	0	0	0	0	0.0
<b>Ridgeview Estates (L (156)</b> \$175-\$241 61'	DNW-Lewisvl BO 4Q05	Starts	0	0	0	0	0	0	0	0	0	0	
		Closings	0	0	0	0	0	0	0	0	0	0	0
		Housing Inv	0	0	0	0	0	0	0	0	0	0	0.0
		VDL Inv	0	0	0	0	0	0	0	0	0	0	0.0
<b>River Oaks Estates (13)</b> \$690-\$730 150'	DNW-FlwrMnd BO 4Q06	Starts	0	0	0	0	0	0	0	0	0	0	
		Closings	0	0	0	0	0	0	0	0	0	0	0
		Housing Inv	0	0	0	0	0	0	0	0	0	0	0.0
		VDL Inv	0	0	0	0	0	0	0	0	0	0	0.0
<b>River Walk/Central P (109)</b> \$644-\$669 40' Megatel Homes	DNW-FlwrMnd Act 2Q15	Starts	5	5	8	0	6	1	7	0	1	9	
		Closings	0	7	3	6	3	3	1	2	2	8	
		Housing Inv	18	16	21	15	18	16	22	20	19	28.5 mos	
		VDL Inv	28	23	15	15	9	8	1	1	0	0.0	
<b>River Walk/Lakeshore (103)</b> \$489-\$650 22'-40' Mattamy Homes/Megatel Homes	DNW-FlwrMnd Act 1Q18	Starts	0	0	5	0	9	0	0	0	0	0	
		Closings	2	2	7	0	0	0	0	6	1	7	
		Housing Inv	10	8	6	6	15	15	15	9	8	13.7 mos	
		VDL Inv	62	62	57	57	48	48	64	48	48	n/a	
<b>River Walk/Parkmont (100)</b> \$403-\$471 30'	DNW-FlwrMnd BO 4Q20	Starts	0	0	0	0	0	0	0	0	0	0	
		Closings	8	2	0	0	0	0	0	0	0	0	0
		Housing Inv	2	0	0	0	0	0	0	0	0	0	0.0
		VDL Inv	0	0	0	0	0	0	0	0	0	0	0.0
<b>River Walk/Pinnacle (110)</b> \$329-\$339 25'	DNW-FlwrMnd BO 2Q21	Starts	0	0	0	0	0	0	0	0	0	0	
		Closings	9	10	0	3	0	0	0	0	0	0	0
		Housing Inv	13	3	3	0	0	0	0	0	0	0	0.0
		VDL Inv	0	0	0	0	0	0	0	0	0	0	0.0
<b>River Walk/Riverside (108)</b> \$383-\$386 25'	DNW-FlwrMnd BO 4Q20	Starts	0	0	0	0	0	0	0	0	0	0	
		Closings	0	11	0	0	0	0	0	0	0	0	0
		Housing Inv	11	0	0	0	0	0	0	0	0	0	0.0
		VDL Inv	0	0	0	0	0	0	0	0	0	0	0.0
<b>Rock Creek Townhomes (293)</b> \$0-\$0 25'	DNE-Frisco Future	Starts	0	0	0	0	0	0	0	0	0	0	
		Closings	0	0	0	0	0	0	0	0	0	0	0
		Housing Inv	0	0	0	0	0	0	0	0	0	0	0.0
		VDL Inv	0	0	0	0	0	0	0	0	0	0	0.0

Dallas/Ft. Worth Residential Survey (3Q22)

Copyright Metrostudy

Page 22 of 31

\*Inventory Supply = Housing Inv/(Annual Closings/12)  
Vacant Developed Lot Supply = VDL Inv/(Annual Starts/12)

N/A indicates Inventory is present but cannot calculate months of supply without starts or closings (see above).

**metrstudy**  
A hanleywood Company

Sales: 1-800-227-8839

# Quarterly Activity & Inventory Report

## Lewisville ISD

Sorted By Subdivision

Subdivision Name (Map No)	Sub Area	Price Range	Lot Size	Status	3Q20	4Q20	1Q21	2Q21	3Q21	4Q21	1Q22	2Q22	3Q22	Ann. Rates/ *Inv. Supply	
<b>Rockbrook Place Addi (221)</b> \$180-\$186 26'	DNW-Lewisvl BO 2Q13	Starts			0	0	0	0	0	0	0	0	0	0	
		Closings			0	0	0	0	0	0	0	0	0	0	0
		Housing Inv			0	0	0	0	0	0	0	0	0	0	0.0
		VDL Inv			0	0	0	0	0	0	0	0	0	0	0.0
<b>Rockhaven Estates (37)</b> \$700-\$1200 150'	DNW-FlwrMnd BO 4Q21	Starts			0	0	0	0	0	0	0	0	0	0	
		Closings			0	0	0	0	0	1	0	0	0	0	1
		Housing Inv			1	1	1	1	1	0	0	0	0	0	0.0
		VDL Inv			0	0	0	0	0	0	0	0	0	0	0.0
<b>Rolling Hills Estate (69)</b> \$221-\$370 65'	DNW-HighVil BO 2Q06	Starts			0	0	0	0	0	0	0	0	0	0	
		Closings			0	0	0	0	0	0	0	0	0	0	0
		Housing Inv			0	0	0	0	0	0	0	0	0	0	0.0
		VDL Inv			0	0	0	0	0	0	0	0	0	0	0.0
<b>Rosalie Estates (122)</b> \$150-\$279 130'	DNW-HighVil BO 4Q00	Starts			0	0	0	0	0	0	0	0	0	0	
		Closings			0	0	0	0	0	0	0	0	0	0	0
		Housing Inv			0	0	0	0	0	0	0	0	0	0	0.0
		VDL Inv			0	0	0	0	0	0	0	0	0	0	0.0
<b>Saddle Oaks Addition (29)</b> \$570-\$600 150'	DNW-FlwrMnd BO 2Q07	Starts			0	0	0	0	0	0	0	0	0	0	
		Closings			0	0	0	0	0	0	0	0	0	0	0
		Housing Inv			0	0	0	0	0	0	0	0	0	0	0.0
		VDL Inv			0	0	0	0	0	0	0	0	0	0	0.0
<b>Saddle Ridge (Carrol (281))</b> \$400-\$443 45'	DNW-Carrlltn BO 2Q21	Starts			9	6	1	0	0	0	0	0	0	0	
		Closings			9	10	11	3	0	0	0	0	0	0	0
		Housing Inv			17	13	3	0	0	0	0	0	0	0	0.0
		VDL Inv			7	1	0	0	0	0	0	0	0	0	0.0
<b>Saddlewood (Flower M (27))</b> \$989-\$1046 120' <i>Bud Bartley Homes/Victor Myers Custom Homes</i>	DNW-FlwrMnd Act 4Q15	Starts			0	1	0	0	2	1	1	0	0	2	
		Closings			4	0	0	0	0	3	0	0	1	4	
		Housing Inv			1	2	2	2	4	2	3	3	2	2	6.0 mos
		VDL Inv			7	6	6	6	4	3	2	2	2	2	12.0 mos
<b>Samuel Place (150)</b> \$175-\$220 65'	DNW-Lewisvl BO 2Q07	Starts			0	0	0	0	0	0	0	0	0	0	
		Closings			0	0	0	0	0	0	0	0	0	0	0
		Housing Inv			0	0	0	0	0	0	0	0	0	0	0.0
		VDL Inv			0	0	0	0	0	0	0	0	0	0	0.0
<b>Sanctuary at Flower (63)</b> \$449-\$598 100'	DNW-FlwrMnd BO 3Q08	Starts			0	0	0	0	0	0	0	0	0	0	
		Closings			0	0	0	0	0	0	0	0	0	0	0
		Housing Inv			0	0	0	0	0	0	0	0	0	0	0.0
		VDL Inv			0	0	0	0	0	0	0	0	0	0	0.0
<b>Serenity (Flower Mou (3))</b> \$0-\$0 80'	DNW-FlwrMnd Future	Starts			0	0	0	0	0	0	0	0	0	0	
		Closings			0	0	0	0	0	0	0	0	0	0	0
		Housing Inv			0	0	0	0	0	0	0	0	0	0	0.0
		VDL Inv			0	0	0	0	0	0	0	0	0	0	0.0
<b>Settler's Village To (222)</b> \$209-\$217 20'	DNW-Lewisvl BO 1Q15	Starts			0	0	0	0	0	0	0	0	0	0	
		Closings			0	0	0	0	0	0	0	0	0	0	0
		Housing Inv			0	0	0	0	0	0	0	0	0	0	0.0
		VDL Inv			0	0	0	0	0	0	0	0	0	0	0.0

Dallas/Ft. Worth Residential Survey (3Q22)

Copyright Metrostudy

Page 23 of 31

**metrstudy**  
A hanleywood Company

Sales: 1-800-227-8839

\*Inventory Supply = Housing Inv/(Annual Closings/12)  
Vacant Developed Lot Supply = VDL Inv/(Annual Starts/12)

N/A indicates Inventory is present but cannot calculate months of supply without starts or closings (see above).

# Quarterly Activity & Inventory Report

## Lewisville ISD

Sorted By Subdivision

Subdivision Name (Map No)	Sub Area	Status	3Q20	4Q20	1Q21	2Q21	3Q21	4Q21	1Q22	2Q22	3Q22	Ann. Rates/ *Inv. Supply	
<b>Shiloh Ranch Estates (6)</b> \$173-\$178      280'	DNW-FlwrMnd BO 2Q03	Starts	0	0	0	0	0	0	0	0	0	0	
		Closings	0	0	0	0	0	0	0	0	0	0	
		Housing Inv	0	0	0	0	0	0	0	0	0	0	0.0
		VDL Inv	0	0	0	0	0	0	0	0	0	0	0.0
<b>Shoal Creek (329)</b> \$268-\$2000      50'-100'	DNE-Plano BO 2Q10	Starts	0	0	0	0	0	0	0	0	0	0	
		Closings	0	0	0	0	0	0	0	0	0	0	
		Housing Inv	0	0	0	0	0	0	0	0	0	0	0.0
		VDL Inv	0	0	0	0	0	0	0	0	0	0	0.0
<b>Shops at Prestonwood (309)</b> \$269-\$560      22'-28'	DNW-Carrltn BO 2Q19	Starts	0	0	0	0	0	0	0	0	0	0	
		Closings	0	0	0	0	0	0	0	0	0	0	
		Housing Inv	0	0	0	0	0	0	0	0	0	0	0.0
		VDL Inv	0	0	0	0	0	0	0	0	0	0	0.0
<b>Simple Oaks Estates (22)</b> \$200-\$500      176'	DNW-DOak BO 2Q17	Starts	0	0	0	0	0	0	0	0	0	0	
		Closings	0	0	0	0	0	0	0	0	0	0	
		Housing Inv	0	0	0	0	0	0	0	0	0	0	0.0
		VDL Inv	0	0	0	0	0	0	0	0	0	0	0.0
<b>Sojourn at the Realm (260)</b> \$299-\$407	DNW-Lewisvl BO 1Q22	Starts	0	0	0	0	0	0	0	0	0	0	
		Closings	5	7	7	16	22	21	2	0	0	0	23
		Housing Inv	75	68	61	45	23	2	0	0	0	0	0.0
		VDL Inv	0	0	0	0	0	0	0	0	0	0	0.0
<b>South Village Additi (200)</b> \$329-\$380      44' <i>Crescent Estates Custom Homes</i>	DNW-Lewisvl Act 4Q17	Starts	2	15	7	2	0	1	0	5	0	6	
		Closings	3	2	0	1	9	19	0	2	0	0	21
		Housing Inv	7	20	27	28	19	1	1	4	4	4	2.3 mos
		VDL Inv	31	16	9	7	7	6	6	1	1	1	2.0 mos
<b>Southridge Addition (187)</b> \$146-\$189      60'-61'	DNW-Lewisvl BO 2Q00	Starts	0	0	0	0	0	0	0	0	0	0	
		Closings	0	0	0	0	0	0	0	0	0	0	
		Housing Inv	0	0	0	0	0	0	0	0	0	0	0.0
		VDL Inv	0	0	0	0	0	0	0	0	0	0	0.0
<b>Sparkman Estates (215)</b> \$235-\$240      30'	DNW-Lewisvl BO 2Q08	Starts	0	0	0	0	0	0	0	0	0	0	
		Closings	0	0	0	0	0	0	0	0	0	0	
		Housing Inv	0	0	0	0	0	0	0	0	0	0	0.0
		VDL Inv	0	0	0	0	0	0	0	0	0	0	0.0
<b>St. James Place (71)</b> \$255-\$330      65' <i>Century Custom Homes/Sundance Builders</i>	DNW-HighVil Act 3Q09	Starts	0	1	0	0	0	2	0	0	0	2	
		Closings	0	0	0	0	0	0	1	1	0	0	2
		Housing Inv	0	1	1	1	1	3	2	1	1	1	6.0 mos
		VDL Inv	3	2	2	2	2	0	0	0	0	0	0.0
<b>Stafford Estates (56)</b> \$226-\$311      75'-85'	DNW-FlwrMnd BO 2Q00	Starts	0	0	0	0	0	0	0	0	0	0	
		Closings	0	0	0	0	0	0	0	0	0	0	
		Housing Inv	0	0	0	0	0	0	0	0	0	0	0.0
		VDL Inv	0	0	0	0	0	0	0	0	0	0	0.0
<b>Stewart Peninsula/Co (250)</b> \$142-\$280      55'	DNW-Colony BO 1Q04	Starts	0	0	0	0	0	0	0	0	0	0	
		Closings	0	0	0	0	0	0	0	0	0	0	
		Housing Inv	0	0	0	0	0	0	0	0	0	0	0.0
		VDL Inv	0	0	0	0	0	0	0	0	0	0	0.0

Dallas/Ft. Worth Residential Survey (3Q22)

Copyright Metrostudy

Page 24 of 31

**metrstudy**  
A hanleywood Company

Sales: 1-800-227-8839

\*Inventory Supply = Housing Inv/(Annual Closings/12)  
Vacant Developed Lot Supply = VDL Inv/(Annual Starts/12)

N/A indicates Inventory is present but cannot calculate months of supply without starts or closings (see above).



# Quarterly Activity & Inventory Report

## Lewisville ISD

Sorted By Subdivision

Subdivision Name (Map No)	Sub Area	Status	3Q20	4Q20	1Q21	2Q21	3Q21	4Q21	1Q22	2Q22	3Q22	Ann. Rates/ *Inv. Supply	
<b>Stewart Peninsula/Cy (248)</b> \$285-\$423 50'-60'	DNW-Colony BO 4Q09	Starts	0	0	0	0	0	0	0	0	0	0	
		Closings	0	0	0	0	0	0	0	0	0	0	
		Housing Inv	0	0	0	0	0	0	0	0	0	0	0.0
		VDL Inv	0	0	0	0	0	0	0	0	0	0	0.0
<b>Stewart Peninsula/He (251)</b> \$163-\$209 55'-65'	DNW-Colony BO 3Q03	Starts	0	0	0	0	0	0	0	0	0	0	
		Closings	0	0	0	0	0	0	0	0	0	0	
		Housing Inv	0	0	0	0	0	0	0	0	0	0	0.0
		VDL Inv	0	0	0	0	0	0	0	0	0	0	0.0
<b>Stewart Peninsula/No (249)</b> \$400-\$769 55'-85'	DNW-Colony BO 2Q10	Starts	0	0	0	0	0	0	0	0	0	0	
		Closings	0	0	0	0	0	0	0	0	0	0	
		Housing Inv	0	0	0	0	0	0	0	0	0	0	0.0
		VDL Inv	0	0	0	0	0	0	0	0	0	0	0.0
<b>Stewart Peninsula/Th (253)</b> \$143-\$189 55'-62'	DNW-Colony BO 4Q02	Starts	0	0	0	0	0	0	0	0	0	0	
		Closings	0	0	0	0	0	0	0	0	0	0	
		Housing Inv	0	0	0	0	0	0	0	0	0	0	0.0
		VDL Inv	0	0	0	0	0	0	0	0	0	0	0.0
<b>Stone Hill Farm (121)</b> \$181-\$247 70'-84'	DNW-FlwrMnd BO 3Q02	Starts	0	0	0	0	0	0	0	0	0	0	
		Closings	0	0	0	0	0	0	0	0	0	0	
		Housing Inv	0	0	0	0	0	0	0	0	0	0	0.0
		VDL Inv	0	0	0	0	0	0	0	0	0	0	0.0
<b>Stonebriar (335)</b> \$250-\$2700 50'-110'	DNE-Frisco BO 1Q11	Starts	0	0	0	0	0	0	0	0	0	0	
		Closings	0	0	0	0	0	0	0	0	0	0	
		Housing Inv	0	0	0	0	0	0	0	0	0	0	0.0
		VDL Inv	0	0	0	0	0	0	0	0	0	0	0.0
<b>Stonebriar Country C (318)</b> \$849-\$1900 90' Parthenon Custom Homes	DNE-Frisco Act 2Q01	Starts	0	0	0	0	0	0	0	0	0	0	
		Closings	0	0	0	0	0	0	0	0	0	0	
		Housing Inv	0	0	0	0	0	0	0	0	0	0	0.0
		VDL Inv	4	4	4	4	4	4	4	4	4	4	n/a
<b>Suncrest @ Flower Mo (134)</b> \$240-\$398 55'-80'	DNW-FlwrMnd BO 4Q13	Starts	0	0	0	0	0	0	0	0	0	0	
		Closings	0	0	0	0	0	0	0	0	0	0	
		Housing Inv	0	0	0	0	0	0	0	0	0	0	0.0
		VDL Inv	0	0	0	0	0	0	0	0	0	0	0.0
<b>Sunset Point at Twin (35)</b> \$1100-\$1300 80' Bud Bartley Homes	DNW-FlwrMnd Act 4Q21	Starts	0	0	0	0	0	0	2	1	5	8	
		Closings	0	0	0	0	0	0	0	0	0	0	
		Housing Inv	0	0	0	0	0	0	2	3	8	8	n/a
		VDL Inv	0	0	0	0	0	18	16	15	10	10	15.0 mos
<b>Surrey Lane Addition (95)</b> \$700-\$800 90'	DNW-FlwrMnd BO 4Q16	Starts	0	0	0	0	0	0	0	0	0	0	
		Closings	0	0	0	0	0	0	0	0	0	0	
		Housing Inv	0	0	0	0	0	0	0	0	0	0	0.0
		VDL Inv	0	0	0	0	0	0	0	0	0	0	0.0
<b>Tequesta (120)</b> \$499-\$556 60'	DNW-HighVil BO 3Q22	Starts	4	4	0	0	2	0	1	0	0	1	
		Closings	0	1	2	0	5	0	1	0	2	3	
		Housing Inv	4	7	5	5	2	2	2	2	0	0	0.0
		VDL Inv	7	3	3	3	1	1	0	0	0	0	0.0

Dallas/Ft. Worth Residential Survey (3Q22)

Copyright Metrostudy

Page 25 of 31

**metrstudy**  
A Hanleywood Company

Sales: 1-800-227-8839

\*Inventory Supply = Housing Inv/(Annual Closings/12)  
Vacant Developed Lot Supply = VDL Inv/(Annual Starts/12)

N/A indicates Inventory is present but cannot calculate months of supply without starts or closings (see above).

# Quarterly Activity & Inventory Report

## Lewisville ISD

Sorted By Subdivision

Subdivision Name (Map No)	Sub Area	Price Range	Lot Size	Status	3Q20	4Q20	1Q21	2Q21	3Q21	4Q21	1Q22	2Q22	3Q22	Ann. Rates/ *Inv. Supply	
<b>Terracina (Flower Mo (55))</b> \$695-\$771 100' Toll Brothers Inc	DNW-FlwrMnd Act 3Q12	Starts			6	5	1	0	0	0	0	0	0	0	
		Closings			7	7	4	11	2	1	0	1	0	2	
		Housing Inv			20	18	15	4	2	1	1	1	0	0	0.0
		VDL Inv			7	2	1	1	1	1	1	1	1	1	n/a
<b>The Corvalla at Ston (334)</b> \$525-\$2000 Robert Elliott Custom Homes	DNE-Frisco Future	Starts			0	0	0	0	0	0	0	0	0	0	
		Closings			13	5	3	1	3	2	0	2	0	4	
		Housing Inv			16	11	8	7	4	2	2	0	0	0	0.0
		VDL Inv			0	0	0	0	0	0	0	0	0	0	0.0
<b>Three Bridges Estate (68)</b> \$800-\$1000 258'	DNW-FlwrMnd Act 2Q05	Starts			0	0	0	0	0	0	0	0	0	0	
		Closings			0	0	0	0	0	0	0	0	0	0	0
		Housing Inv			0	0	0	0	0	0	0	0	0	0	0.0
		VDL Inv			2	2	2	2	2	2	2	2	2	2	n/a
<b>Timber Creek Park Es (185)</b> \$112-\$160 61'	DNW-Lewisvl BO 4Q01	Starts			0	0	0	0	0	0	0	0	0	0	
		Closings			0	0	0	0	0	0	0	0	0	0	0
		Housing Inv			0	0	0	0	0	0	0	0	0	0	0.0
		VDL Inv			0	0	0	0	0	0	0	0	0	0	0.0
<b>Timber Creek Willows (205)</b> \$0-\$0 25'	DNW-Lewisvl Future	Starts			0	0	0	0	0	0	0	0	0	0	
		Closings			0	0	0	0	0	0	0	0	0	0	0
		Housing Inv			0	0	0	0	0	0	0	0	0	0	0.0
		VDL Inv			0	0	0	0	0	0	0	0	0	0	0.0
<b>Timber Hill Addition (195)</b> \$135-\$185 53'	DNW-Lewisvl BO 3Q00	Starts			0	0	0	0	0	0	0	0	0	0	
		Closings			0	0	0	0	0	0	0	0	0	0	0
		Housing Inv			0	0	0	0	0	0	0	0	0	0	0.0
		VDL Inv			0	0	0	0	0	0	0	0	0	0	0.0
<b>Timber Valley Estate (188)</b> \$90-\$128 40'-67'	DNW-Lewisvl BO 2Q00	Starts			0	0	0	0	0	0	0	0	0	0	
		Closings			0	0	0	0	0	0	0	0	0	0	0
		Housing Inv			0	0	0	0	0	0	0	0	0	0	0.0
		VDL Inv			0	0	0	0	0	0	0	0	0	0	0.0
<b>Tinley Park (161)</b> \$635-\$635 50'	DNW-FlwrMnd BO 3Q22	Starts			4	0	13	10	3	3	1	0	0	4	
		Closings			0	0	1	2	8	15	2	6	1	24	
		Housing Inv			5	5	17	25	20	8	7	1	0	0.0	
		VDL Inv			30	30	17	7	4	1	0	0	0	0.0	
<b>Town Lake at Flower (24)</b> \$1417-\$1627 100'-120' Toll Brothers Inc	DNW-FlwrMnd Act 1Q17	Starts			16	4	11	1	11	11	3	9	7	30	
		Closings			3	11	6	8	7	3	9	5	9	26	
		Housing Inv			28	21	26	19	23	31	25	29	27	12.5 mos	
		VDL Inv			17	13	58	57	46	35	32	23	16	6.4 mos	
<b>Towne View Estates (93)</b> \$260-\$322 80'-97'	DNW-FlwrMnd BO 2Q02	Starts			0	0	0	0	0	0	0	0	0	0	
		Closings			0	0	0	0	0	0	0	0	0	0	
		Housing Inv			0	0	0	0	0	0	0	0	0	0	0.0
		VDL Inv			0	0	0	0	0	0	0	0	0	0	0.0
<b>Townhomes @ Continen (204)</b> \$158-\$220 24'	DNW-Lewisvl BO 4Q17	Starts			0	0	0	0	0	0	0	0	0	0	
		Closings			0	0	0	0	0	0	0	0	0	0	0
		Housing Inv			0	0	0	0	0	0	0	0	0	0	0.0
		VDL Inv			0	0	0	0	0	0	0	0	0	0	0.0

Dallas/Ft. Worth Residential Survey (3Q22)

Copyright Metrostudy

Page 26 of 31

**metrstudy**  
A hanleywood Company

Sales: 1-800-227-8839

\*Inventory Supply = Housing Inv/(Annual Closings/12)  
Vacant Developed Lot Supply = VDL Inv/(Annual Starts/12)

N/A indicates Inventory is present but cannot calculate months of supply without starts or closings (see above).

# Quarterly Activity & Inventory Report

## Lewisville ISD

Sorted By Subdivision

Subdivision Name (Map No)	Sub Area	Price Range	Lot Size	Status	3Q20	4Q20	1Q21	2Q21	3Q21	4Q21	1Q22	2Q22	3Q22	Ann. Rates/ *Inv. Supply	
<b>Townhomes of Vista R (218)</b> \$179-\$189 25'	DNW-Lewisvl BO 2Q10	Starts			0	0	0	0	0	0	0	0	0	0	
		Closings			0	0	0	0	0	0	0	0	0	0	0
		Housing Inv			0	0	0	0	0	0	0	0	0	0	0.0
		VDL Inv			0	0	0	0	0	0	0	0	0	0	0.0
<b>Traditions of Flower (66)</b> \$0-\$0 107'	DNW-FlwrMnd Future	Starts			0	0	0	0	0	0	0	0	0	0	
		Closings			0	0	0	0	0	0	0	0	0	0	0
		Housing Inv			0	0	0	0	0	0	0	0	0	0	0.0
		VDL Inv			0	0	0	0	0	0	0	0	0	0	0.0
<b>Trails at Arbor Hill (294)</b> \$394-\$595 50'	DNW-Carrltn BO 4Q20	Starts			1	1	0	0	0	0	0	0	0	0	
		Closings			7	2	0	0	0	0	0	0	0	0	0
		Housing Inv			1	0	0	0	0	0	0	0	0	0	0.0
		VDL Inv			1	0	0	0	0	0	0	0	0	0	0.0
<b>Trinity Townhomes (L (216)</b> \$0-\$0 17'	DNW-Lewisvl Future	Starts			0	0	0	0	0	0	0	0	0	0	
		Closings			0	0	0	0	0	0	0	0	0	0	0
		Housing Inv			0	0	0	0	0	0	0	0	0	0	0.0
		VDL Inv			0	0	0	0	0	0	0	0	0	0	0.0
<b>Twin Lakes Estates (30)</b> \$400-\$500 100'	DNW-DOak BO 3Q03	Starts			0	0	0	0	0	0	0	0	0	0	
		Closings			0	0	0	0	0	0	0	0	0	0	0
		Housing Inv			0	0	0	0	0	0	0	0	0	0	0.0
		VDL Inv			0	0	0	0	0	0	0	0	0	0	0.0
<b>Uptown Village (208)</b> \$199-\$330 23'	DNW-Lewisvl BO 3Q21	Starts			0	5	0	0	0	0	0	0	0	0	
		Closings			0	0	1	0	5	0	0	0	0	0	0
		Housing Inv			1	6	5	5	0	0	0	0	0	0	0.0
		VDL Inv			5	0	0	0	0	0	0	0	0	0	0.0
<b>Valley View Addition (182)</b> \$94-\$175 65'	DNW-Lewisvl BO 2Q01	Starts			0	0	0	0	0	0	0	0	0	0	
		Closings			0	0	0	0	0	0	0	0	0	0	0
		Housing Inv			0	0	0	0	0	0	0	0	0	0	0.0
		VDL Inv			0	0	0	0	0	0	0	0	0	0	0.0
<b>Valley Vista Estates (180)</b> \$118-\$225 66'-100'	DNW-Lewisvl BO 2Q00	Starts			0	0	0	0	0	0	0	0	0	0	
		Closings			0	0	0	0	0	0	0	0	0	0	0
		Housing Inv			0	0	0	0	0	0	0	0	0	0	0.0
		VDL Inv			0	0	0	0	0	0	0	0	0	0	0.0
<b>Vassar Court (332)</b> \$0-\$0 30'	DNW-Colony Future	Starts			0	0	0	0	0	0	0	0	0	0	
		Closings			0	0	0	0	0	0	0	0	0	0	0
		Housing Inv			0	0	0	0	0	0	0	0	0	0	0.0
		VDL Inv			0	0	0	0	0	0	0	0	0	0	0.0
<b>Verona Addition (Lew (167)</b> \$306-\$348 50'	DNW-Lewisvl BO 4Q17	Starts			0	0	0	0	0	0	0	0	0	0	
		Closings			0	0	0	0	0	0	0	0	0	0	0
		Housing Inv			0	0	0	0	0	0	0	0	0	0	0.0
		VDL Inv			0	0	0	0	0	0	0	0	0	0	0.0
<b>Vickery (32)</b> \$790-\$1416 John R Landon Distinction/Toll Brothers Inc	DNW-CCanyon Act 1Q21	Starts			0	0	0	3	14	24	21	16	15	76	
		Closings			0	0	0	0	0	0	1	5	11	17	
		Housing Inv			0	0	0	3	17	41	61	72	76	53.6 mos	
		VDL Inv			0	0	99	123	131	134	113	97	82	12.9 mos	

Dallas/Ft. Worth Residential Survey (3Q22)

Copyright Metrostudy

Page 27 of 31

\*Inventory Supply = Housing Inv/(Annual Closings/12)  
Vacant Developed Lot Supply = VDL Inv/(Annual Starts/12)

N/A indicates Inventory is present but cannot calculate months of supply without starts or closings (see above).

**metrstudy**  
A hanleywood Company

Sales: 1-800-227-8839

# Quarterly Activity & Inventory Report

## Lewisville ISD

Sorted By Subdivision

Subdivision Name (Map No)	Sub Area	Price Range	Lot Size	Status	3Q20	4Q20	1Q21	2Q21	3Q21	4Q21	1Q22	2Q22	3Q22	Ann. Rates/ *Inv. Supply	
<b>Vilamoura (53)</b> \$600-\$800 72'	DNW-FlwrMnd BO 4Q17	Starts			0	0	0	0	0	0	0	0	0	0	
		Closings			0	0	0	0	0	0	0	0	0	0	0
		Housing Inv			0	0	0	0	0	0	0	0	0	0	0.0
		VDL Inv			0	0	0	0	0	0	0	0	0	0	0.0
<b>Village at Prestonwo (312)</b> \$200-\$241 40'-50'	DNE-Plano BO 2Q11	Starts			0	0	0	0	0	0	0	0	0	0	
		Closings			0	0	0	0	0	0	0	0	0	0	0
		Housing Inv			0	0	0	0	0	0	0	0	0	0	0.0
		VDL Inv			0	0	0	0	0	0	0	0	0	0	0.0
<b>Village at the Point (283)</b> \$360-\$360 26'	DNW-Colony BO 3Q20	Starts			0	0	0	0	0	0	0	0	0	0	
		Closings			16	0	0	0	0	0	0	0	0	0	0
		Housing Inv			0	0	0	0	0	0	0	0	0	0	0.0
		VDL Inv			0	0	0	0	0	0	0	0	0	0	0.0
<b>Village Townhomes (300)</b> \$0-\$0 30'	DNW-Colony Future	Starts			0	0	0	0	0	0	0	0	0	0	
		Closings			0	0	0	0	0	0	0	0	0	0	0
		Housing Inv			0	0	0	0	0	0	0	0	0	0	0.0
		VDL Inv			0	0	0	0	0	0	0	0	0	0	0.0
<b>Villages of Indian C (239)</b> \$130-\$165 40'-50'	DNW-Carrltn BO 1Q03	Starts			0	0	0	0	0	0	0	0	0	0	
		Closings			0	0	0	0	0	0	0	0	0	0	0
		Housing Inv			0	0	0	0	0	0	0	0	0	0	0.0
		VDL Inv			0	0	0	0	0	0	0	0	0	0	0.0
<b>Villages of Northsho (85)</b> \$232-\$260 68'-94'	DNW-FlwrMnd BO 3Q00	Starts			0	0	0	0	0	0	0	0	0	0	
		Closings			0	0	0	0	0	0	0	0	0	0	0
		Housing Inv			0	0	0	0	0	0	0	0	0	0	0.0
		VDL Inv			0	0	0	0	0	0	0	0	0	0	0.0
<b>Villas at Indian Cre (240)</b> \$250-\$289 40'	DNW-Carrltn BO 4Q13	Starts			0	0	0	0	0	0	0	0	0	0	
		Closings			0	0	0	0	0	0	0	0	0	0	0
		Housing Inv			0	0	0	0	0	0	0	0	0	0	0.0
		VDL Inv			0	0	0	0	0	0	0	0	0	0	0.0
<b>Villas at Lake Vista (225)</b> \$260-\$333 30'	DNW-Coppell BO 2Q14	Starts			0	0	0	0	0	0	0	0	0	0	
		Closings			0	0	0	0	0	0	0	0	0	0	0
		Housing Inv			0	0	0	0	0	0	0	0	0	0	0.0
		VDL Inv			0	0	0	0	0	0	0	0	0	0	0.0
<b>Villas at Parker (304)</b> \$379-\$400 45'	DNW-Carrltn BO 4Q20	Starts			0	0	0	0	0	0	0	0	0	0	
		Closings			3	1	0	0	0	0	0	0	0	0	0
		Housing Inv			1	0	0	0	0	0	0	0	0	0	0.0
		VDL Inv			0	0	0	0	0	0	0	0	0	0	0.0
<b>Villas at Southgate (130)</b> \$510-\$549 Normandy Homes 30'	DNW-FlwrMnd Act 3Q18	Starts			7	14	14	17	1	3	11	3	0	17	
		Closings			26	10	7	3	18	4	8	5	8	25	
		Housing Inv			10	14	21	35	18	17	20	18	10	4.8 mos	
		VDL Inv			63	49	35	18	17	14	3	0	0	0.0	
<b>Villas at Southgate (133)</b> \$462-\$588 CB Jeni Homes 22'	DNW-FlwrMnd Act 3Q18	Starts			11	0	32	20	7	11	13	28	11	63	
		Closings			9	10	8	11	25	2	5	8	16	31	
		Housing Inv			20	10	34	43	25	34	42	62	57	22.1 mos	
		VDL Inv			73	73	96	78	71	60	47	19	8	1.5 mos	

Dallas/Ft. Worth Residential Survey (3Q22)

Copyright Metrostudy

Page 28 of 31

**metrstudy**  
A hanleywood Company

Sales: 1-800-227-8839

\*Inventory Supply = Housing Inv/(Annual Closings/12)  
Vacant Developed Lot Supply = VDL Inv/(Annual Starts/12)

N/A indicates Inventory is present but cannot calculate months of supply without starts or closings (see above).

# Quarterly Activity & Inventory Report

## Lewisville ISD

Sorted By Subdivision

Subdivision Name (Map No)	Sub Area	Status	3Q20	4Q20	1Q21	2Q21	3Q21	4Q21	1Q22	2Q22	3Q22	Ann. Rates/ *Inv. Supply	
<b>Villas of Bellaire (190)</b> \$0-\$0 26'	DNW-Lewisvl	Starts	0	0	0	0	0	0	0	0	0	0	
		Future Closings	0	0	0	0	0	0	0	0	0	0	0
		Housing Inv	0	0	0	0	0	0	0	0	0	0	0.0
		VDL Inv	0	0	0	0	0	0	0	0	0	0	0.0
<b>Villas of Indian Cre (243)</b> \$234-\$489 60'-80'	DNW-Carrlltn	Starts	0	0	0	0	0	0	0	0	0	0	
		BO 1Q11 Closings	0	0	0	0	0	0	0	0	0	0	0
		Housing Inv	0	0	0	0	0	0	0	0	0	0	0.0
		VDL Inv	0	0	0	0	0	0	0	0	0	0	0.0
<b>Villas of Indian Cre (234)</b> \$227-\$256 22'	DNW-Carrlltn	Starts	0	0	0	0	0	0	0	0	0	0	
		BO 1Q15 Closings	0	0	0	0	0	0	0	0	0	0	0
		Housing Inv	0	0	0	0	0	0	0	0	0	0	0.0
		VDL Inv	0	0	0	0	0	0	0	0	0	0	0.0
<b>Villas of Prestonwoo (315)</b> \$451-\$498 28' Beazer Homes/Impression Homes	DNW-Carrlltn	Starts	3	13	14	30	11	25	0	14	4	43	
		Act 1Q17 Closings	0	0	5	0	19	35	10	20	8	73	
		Housing Inv	3	16	25	55	47	37	27	21	17	17	2.8 mos
		VDL Inv	96	83	69	39	43	18	18	4	0	0	0.0
<b>Vista del Lago Addit (226)</b> \$438-\$497 22' CB Jeni Homes	DNW-Lewisvl	Starts	7	16	10	21	3	6	16	21	0	43	
		Act 3Q19 Closings	13	6	10	10	6	11	0	9	17	37	
		Housing Inv	14	24	24	35	32	27	43	55	38	38	12.3 mos
		VDL Inv	102	86	76	55	52	46	30	9	9	9	2.5 mos
<b>Vista Ridge Brownsto (220)</b> \$215-\$260 24'	DNW-Lewisvl	Starts	0	0	0	0	0	0	0	0	0	0	
		BO 2Q17 Closings	0	0	0	0	0	0	0	0	0	0	0
		Housing Inv	0	0	0	0	0	0	0	0	0	0	0.0
		VDL Inv	0	0	0	0	0	0	0	0	0	0	0.0
<b>Vista Villas Additio (181)</b> \$326-\$393 50'	DNW-Lewisvl	Starts	0	0	0	0	0	0	0	0	0	0	
		BO 3Q20 Closings	4	0	0	0	0	0	0	0	0	0	0
		Housing Inv	0	0	0	0	0	0	0	0	0	0	0.0
		VDL Inv	0	0	0	0	0	0	0	0	0	0	0.0
<b>Walnut Grove Additio (73)</b> \$290-\$300 46'	DNW-FlwrMnd	Starts	0	0	0	0	0	0	0	0	0	0	
		BO 4Q08 Closings	0	0	0	0	0	0	0	0	0	0	0
		Housing Inv	0	0	0	0	0	0	0	0	0	0	0.0
		VDL Inv	0	0	0	0	0	0	0	0	0	0	0.0
<b>Warmington Meadows (308)</b> \$386-\$709 80'	DNW-Carrlltn	Starts	0	0	0	0	0	0	0	0	0	0	
		BO 2Q14 Closings	0	0	0	0	0	0	0	0	0	0	0
		Housing Inv	0	0	0	0	0	0	0	0	0	0	0.0
		VDL Inv	0	0	0	0	0	0	0	0	0	0	0.0
<b>Waterford Park Estat (111)</b> \$299-\$445 70'-114'	DNW-FlwrMnd	Starts	0	0	0	0	0	0	0	0	0	0	
		BO 3Q15 Closings	0	0	0	0	0	0	0	0	0	0	0
		Housing Inv	0	0	0	0	0	0	0	0	0	0	0.0
		VDL Inv	0	0	0	0	0	0	0	0	0	0	0.0
<b>Waters Edge, The (256)</b> \$475-\$900 60'	DNW-Colony	Starts	0	0	0	0	0	0	0	0	0	0	
		BO 4Q09 Closings	0	0	0	0	0	0	0	0	0	0	0
		Housing Inv	0	0	0	0	0	0	0	0	0	0	0.0
		VDL Inv	0	0	0	0	0	0	0	0	0	0	0.0

Dallas/Ft. Worth Residential Survey (3Q22)

Copyright Metrostudy

Page 29 of 31

**metrstudy**  
A hanleywood Company

Sales: 1-800-227-8839

\*Inventory Supply = Housing Inv/(Annual Closings/12)  
Vacant Developed Lot Supply = VDL Inv/(Annual Starts/12)

N/A indicates Inventory is present but cannot calculate months of supply without starts or closings (see above).

# Quarterly Activity & Inventory Report

## Lewisville ISD

Sorted By Subdivision

Subdivision Name (Map No)	Sub Area	Status	3Q20	4Q20	1Q21	2Q21	3Q21	4Q21	1Q22	2Q22	3Q22	Ann. Rates/ *Inv. Supply	
<b>Wellington Manor (FI (45))</b> \$469-\$554      80'	DNW-FlwrMnd BO 2Q14	Starts	0	0	0	0	0	0	0	0	0	0	
		Closings	0	0	0	0	0	0	0	0	0	0	0
		Housing Inv	0	0	0	0	0	0	0	0	0	0	0.0
		VDL Inv	0	0	0	0	0	0	0	0	0	0	0.0
<b>Wellington/Brandywin (36)</b> \$395-\$439      95'	DNW-FlwrMnd BO 4Q04	Starts	0	0	0	0	0	0	0	0	0	0	
		Closings	0	0	0	0	0	0	0	0	0	0	0
		Housing Inv	0	0	0	0	0	0	0	0	0	0	0.0
		VDL Inv	0	0	0	0	0	0	0	0	0	0	0.0
<b>Wellington/Estates, (38)</b> \$228-\$364      50'-71'	DNW-FlwrMnd BO 3Q07	Starts	0	0	0	0	0	0	0	0	0	0	
		Closings	0	0	0	0	0	0	0	0	0	0	0
		Housing Inv	0	0	0	0	0	0	0	0	0	0	0.0
		VDL Inv	0	0	0	0	0	0	0	0	0	0	0.0
<b>Wellington/Hillcrest (42)</b> \$340-\$374      75'-106'	DNW-FlwrMnd BO 1Q04	Starts	0	0	0	0	0	0	0	0	0	0	
		Closings	0	0	0	0	0	0	0	0	0	0	0
		Housing Inv	0	0	0	0	0	0	0	0	0	0	0.0
		VDL Inv	0	0	0	0	0	0	0	0	0	0	0.0
<b>Wellington/Wethersto (57)</b> \$134-\$335      50'-70'	DNW-FlwrMnd BO 2Q04	Starts	0	0	0	0	0	0	0	0	0	0	
		Closings	0	0	0	0	0	0	0	0	0	0	0
		Housing Inv	0	0	0	0	0	0	0	0	0	0	0.0
		VDL Inv	0	0	0	0	0	0	0	0	0	0	0.0
<b>Wentworth Villas Est (149)</b> \$185-\$205      40'	DNW-Lewisvl BO 2Q10	Starts	0	0	0	0	0	0	0	0	0	0	
		Closings	0	0	0	0	0	0	0	0	0	0	0
		Housing Inv	0	0	0	0	0	0	0	0	0	0	0.0
		VDL Inv	0	0	0	0	0	0	0	0	0	0	0.0
<b>West Oaks (18)</b> \$400-\$3000      160'	DNW-DOak BO 2Q17	Starts	0	0	0	0	0	0	0	0	0	0	
		Closings	0	0	0	0	0	0	0	0	0	0	0
		Housing Inv	0	0	0	0	0	0	0	0	0	0	0.0
		VDL Inv	0	0	0	0	0	0	0	0	0	0	0.0
<b>Westport Lakeview Vi (265)</b> \$970-\$980      25' <i>P Custom Homes</i>	DNW-Colony Act 1Q19	Starts	0	0	0	0	8	0	7	3	0	10	
		Closings	3	4	0	0	0	6	4	0	4	14	
		Housing Inv	10	6	6	6	14	8	11	14	10	8.6 mos	
		VDL Inv	18	18	18	18	10	10	3	0	0	0.0	
<b>Whisper Creek (112)</b> \$615-\$830      93'	DNW-FlwrMnd BO 2Q16	Starts	0	0	0	0	0	0	0	0	0	0	
		Closings	0	0	0	0	0	0	0	0	0	0	0
		Housing Inv	0	0	0	0	0	0	0	0	0	0	0.0
		VDL Inv	0	0	0	0	0	0	0	0	0	0	0.0
<b>Whispering Oaks (Lew (151))</b> \$102-\$172      50'-70'	DNW-Lewisvl BO 4Q00	Starts	0	0	0	0	0	0	0	0	0	0	
		Closings	0	0	0	0	0	0	0	0	0	0	0
		Housing Inv	0	0	0	0	0	0	0	0	0	0	0.0
		VDL Inv	0	0	0	0	0	0	0	0	0	0	0.0
<b>Whitestone Village ( 82)</b> \$0-\$0      30'	DNW-HighVil Future	Starts	0	0	0	0	0	0	0	0	0	0	
		Closings	0	0	0	0	0	0	0	0	0	0	0
		Housing Inv	0	0	0	0	0	0	0	0	0	0	0.0
		VDL Inv	0	0	0	0	0	0	0	0	0	0	0.0

Dallas/Ft. Worth Residential Survey (3Q22)

Copyright Metrostudy

Page 30 of 31

**metrstudy**  
A hanleywood Company

Sales: 1-800-227-8839

\*Inventory Supply = Housing Inv/(Annual Closings/12)  
Vacant Developed Lot Supply = VDL Inv/(Annual Starts/12)

N/A indicates Inventory is present but cannot calculate months of supply without starts or closings (see above).

# Quarterly Activity & Inventory Report

## Lewisville ISD

Sorted By Subdivision

Subdivision Name (Map No)	Sub Area	Price Range	Lot Size	Status	3Q20	4Q20	1Q21	2Q21	3Q21	4Q21	1Q22	2Q22	3Q22	Ann. Rates/ *Inv. Supply		
<b>Whyburn (81)</b> \$0-\$0	DNW-FlwrMnd Future	80'	Starts	0	0	0	0	0	0	0	0	0	0	0		
			Closings	0	0	0	0	0	0	0	0	0	0	0	0	
			Housing Inv	0	0	0	0	0	0	0	0	0	0	0	0	0.0
			VDL Inv	0	0	0	0	0	0	0	0	0	0	0	0	0.0
<b>Wichita Chase (33)</b> \$356-\$465	DNW-FlwrMnd BO 2Q06	90'-140'	Starts	0	0	0	0	0	0	0	0	0	0	0	0	
			Closings	0	0	0	0	0	0	0	0	0	0	0	0	0
			Housing Inv	0	0	0	0	0	0	0	0	0	0	0	0	0.0
			VDL Inv	0	0	0	0	0	0	0	0	0	0	0	0	0.0
<b>Wichita Creek Estate (20)</b> \$460-\$650	DNW-FlwrMnd BO 2Q01	160'-165'	Starts	0	0	0	0	0	0	0	0	0	0	0	0	
			Closings	0	0	0	0	0	0	0	0	0	0	0	0	0
			Housing Inv	0	0	0	0	0	0	0	0	0	0	0	0	0.0
			VDL Inv	0	0	0	0	0	0	0	0	0	0	0	0	0.0
<b>Wichita Estates (136)</b> \$535-\$637 <i>Copper Street Homes/Mcooper Homes</i>	DNW-HighVil Act 1Q16	80'	Starts	1	0	0	0	0	0	1	0	0	0	0	1	
			Closings	1	0	2	0	0	0	0	0	0	0	0	0	0
			Housing Inv	2	2	0	0	0	0	1	1	1	1	1	1	n/a
			VDL Inv	2	2	2	2	2	1	1	1	1	1	1	1	12.0 mos
<b>Willowbrook Addition (210)</b> \$368-\$446	DNW-Lewisvl BO 2Q19	50'	Starts	0	0	0	0	0	0	0	0	0	0	0	0	
			Closings	0	0	0	0	0	0	0	0	0	0	0	0	0
			Housing Inv	0	0	0	0	0	0	0	0	0	0	0	0	0.0
			VDL Inv	0	0	0	0	0	0	0	0	0	0	0	0	0.0
<b>Windhaven Crossing T (246)</b> \$335-\$435 <i>Mattamy Homes</i>	DNW-Lewisvl Act 1Q17	22'	Starts	46	6	13	0	7	6	22	32	0	0	0	60	
			Closings	15	31	40	0	15	10	0	0	0	0	0	0	10
			Housing Inv	71	46	19	19	11	7	29	61	61	61	61	61	73.2 mos
			VDL Inv	50	122	109	109	102	96	74	42	42	42	42	42	8.4 mos
<b>Woods @ Wellington, (58)</b> \$340-\$380	DNW-FlwrMnd BO 4Q02	80'	Starts	0	0	0	0	0	0	0	0	0	0	0	0	
			Closings	0	0	0	0	0	0	0	0	0	0	0	0	0
			Housing Inv	0	0	0	0	0	0	0	0	0	0	0	0	0.0
			VDL Inv	0	0	0	0	0	0	0	0	0	0	0	0	0.0
<b>Wright Estates (48)</b> \$559-\$590	DNW-FlwrMnd BO 3Q08	223'	Starts	0	0	0	0	0	0	0	0	0	0	0	0	
			Closings	0	0	0	0	0	0	0	0	0	0	0	0	0
			Housing Inv	0	0	0	0	0	0	0	0	0	0	0	0	0.0
			VDL Inv	0	0	0	0	0	0	0	0	0	0	0	0	0.0
<b>Wyndale Meadows Addi (244)</b> \$383-\$505	DNW-Lewisvl BO 3Q20	50'-65'	Starts	0	0	0	0	0	0	0	0	0	0	0	0	
			Closings	1	0	0	0	0	0	0	0	0	0	0	0	0
			Housing Inv	0	0	0	0	0	0	0	0	0	0	0	0	0.0
			VDL Inv	0	0	0	0	0	0	0	0	0	0	0	0	0.0
<b>Selection Totals</b>			Starts	231	219	258	294	358	282	262	333	253	253	1,130		
			Closings	340	322	211	219	244	278	176	317	272	272	1,043		
			Housing Inv	743	640	687	762	876	880	966	982	963	963	11.1 mos		
			VDL Inv	1,536	1,499	1,867	1,887	1,550	1,807	1,567	1,206	1,040	1,040	11.0 mos		

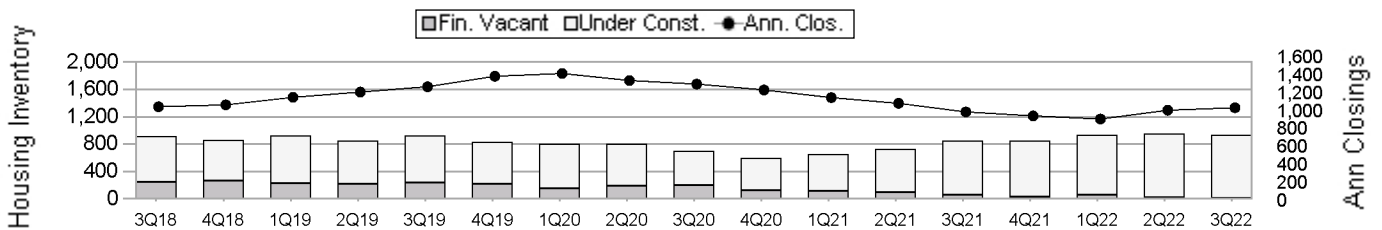
\*Inventory Supply = Housing Inv/(Annual Closings/12)  
 Vacant Developed Lot Supply = VDL Inv/(Annual Starts/12)  
 N/A indicates Inventory is present but cannot calculate months of supply without starts or closings (see above).

# Historical Housing Activity Summary

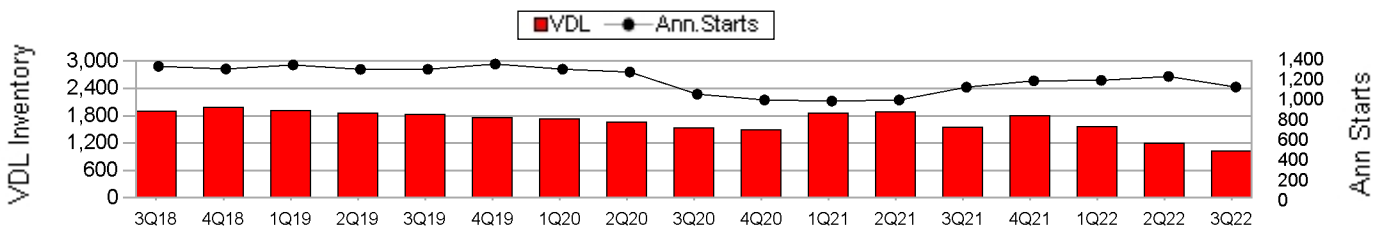
## Lewisville ISD

Qtr	Qtr Clos	Ann Clos	Model	FinVac	UC	Total Inv	Total Supply	Qtr Starts	Ann Starts	VDL	VDL Supply	Fut Lots	Ann Lot Deliv
3Q18	320	1,054	49	243	670	962	11.0	448	1,335	1,907	17.1	3,877	1,779
4Q18	271	1,075	54	267	595	916	10.2	225	1,309	1,989	18.2	3,516	1,452
1Q19	266	1,159	50	233	687	970	10.0	320	1,349	1,922	17.1	3,280	1,148
2Q19	361	1,218	75	215	631	921	9.1	312	1,305	1,868	17.2	3,301	1,029
3Q19	380	1,278	62	235	693	990	9.3	449	1,306	1,832	16.8	3,210	1,231
4Q19	387	1,394	47	221	612	880	7.6	277	1,358	1,772	15.7	3,020	1,141
1Q20	297	1,425	50	152	650	852	7.2	269	1,307	1,736	15.9	2,945	1,121
2Q20	283	1,347	51	192	609	852	7.6	283	1,278	1,664	15.6	2,941	1,074
3Q20	340	1,307	49	201	493	743	6.8	231	1,060	1,536	17.4	2,836	764
4Q20	322	1,242	43	124	473	640	6.2	219	1,002	1,499	18.0	2,692	729
1Q21	211	1,156	39	114	534	687	7.1	258	991	1,867	22.6	2,052	1,122
2Q21	219	1,092	35	95	632	762	8.4	294	1,002	1,887	22.6	2,221	1,225
3Q21	244	996	30	63	783	876	10.6	358	1,129	1,550	16.5	2,478	1,143
4Q21	278	952	28	36	816	880	11.1	282	1,192	1,807	18.2	2,178	1,500
1Q22	176	917	33	58	875	966	12.6	262	1,196	1,567	15.7	2,304	896
2Q22	317	1,015	32	22	928	982	11.6	333	1,235	1,206	11.7	2,289	554
3Q22	272	1,043	34	16	913	963	11.1	253	1,130	1,040	11.0	2,202	620

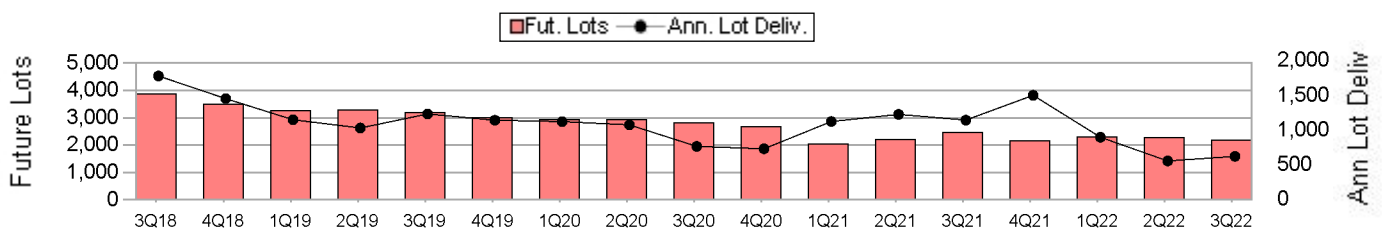
### Housing Inventory and Closings By Quarter



### Vacant Developed Lots and Starts By Quarter



### Future Lots and Deliveries By Quarter





# Price Range Analysis

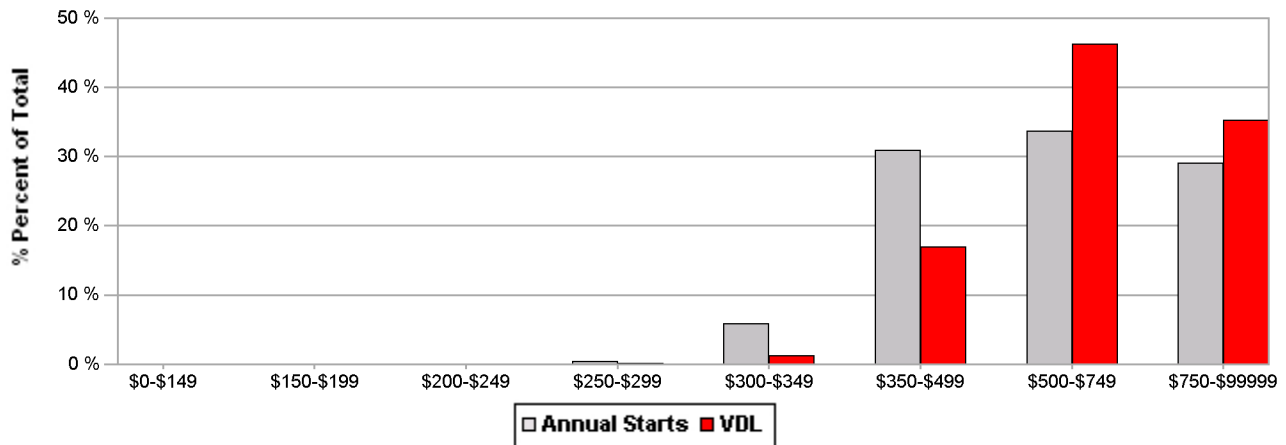
## Lewisville ISD

\$0 \$150,000 \$200,000 \$250,000 \$300,000 \$350,000 \$500,000 \$750,000  
 \$149,999 \$199,999 \$249,999 \$299,999 \$349,999 \$499,999 \$749,999 \$99999999 \*Total

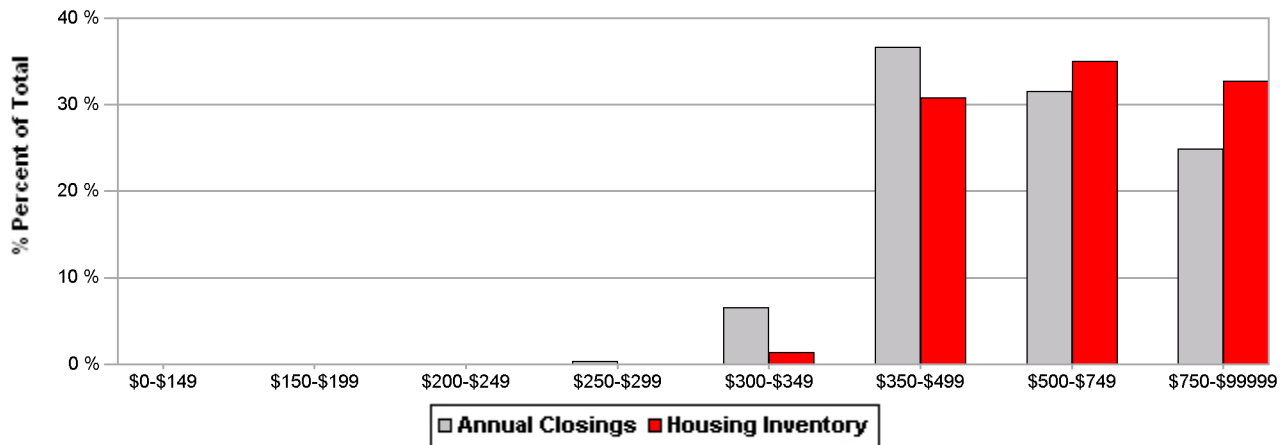
<b>Custom Market Numerical Totals</b>	Ann Starts	5	66	350	380	328	1,130
	Ann Closings	3	68	383	329	259	1,043
	Housing Inv	1	13	297	338	315	963
	VDL Inv	2	14	177	481	367	1,040
	<b>Housing Supply (Mos)</b>	<b>2.1</b>	<b>2.3</b>	<b>9.3</b>	<b>12.3</b>	<b>14.6</b>	<b>11.1</b>
<b>VDL Supply (Mos)</b>	<b>4.6</b>	<b>2.5</b>	<b>6.1</b>	<b>15.2</b>	<b>13.4</b>	<b>11.0</b>	

<b>Custom Market Percentage Totals</b>	Ann Starts	0.5 %	5.9 %	30.9 %	33.7 %	29.1 %	100 %
	Ann Closings	0.3 %	6.5 %	36.7 %	31.6 %	24.9 %	100 %
	Housing Inv	0.1 %	1.4 %	30.8 %	35.1 %	32.7 %	100 %
	VDL Inv	0.2 %	1.3 %	17.0 %	46.2 %	35.3 %	100 %

**Price Range Distribution of Annual Starts vs VDL**



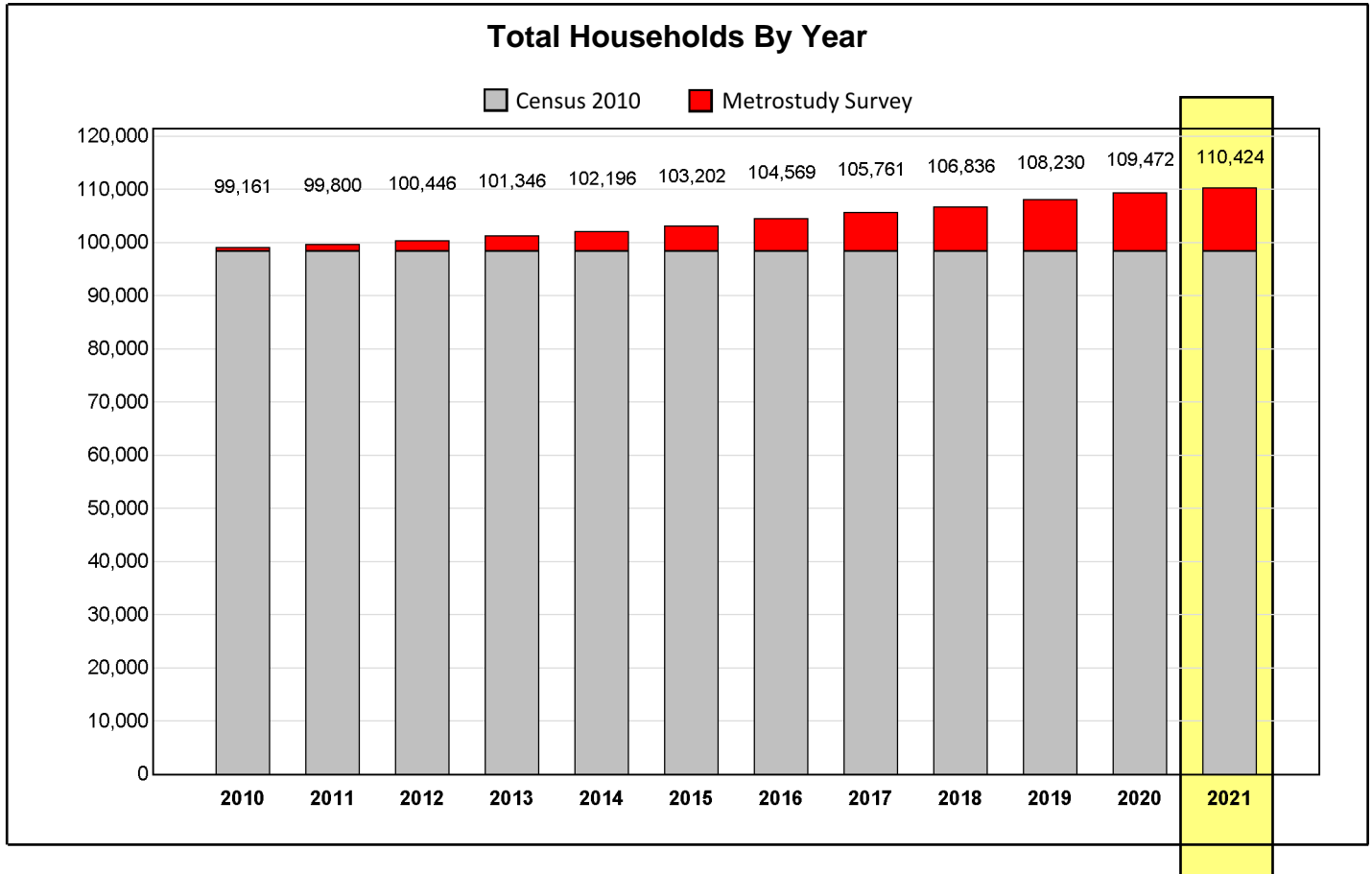
**Price Range Distribution of Annual Closings vs Housing Inventory**



\*Because this report excludes sections without pricing information, the totals may not match those shown on other summary reports.

# Household Growth Summary

Lewisville ISD



Household Development Summary								
Source	Selected Subdivisions		Households By Construction Status			Occupied Units	Annual Closings	Potential Households
	Count	Status	Future Lots	Vacant Lots	Housing Inventory			
Census						98,478		
Metrostudy	253	Builtout	0	0	0	7,246 <sup>1</sup>		
Metrostudy	53	Active	349	1,040	963	4,633 <sup>1</sup>		
Metrostudy	29	Future	1,853	0	0	67		
<b>Totals</b>	<b>335</b>		<b>2,202</b>	<b>1,040</b>	<b>963</b>	<b>110,424</b>	<b>1,043</b>	<b>114,629</b>

1. Cumulative closings since the Year 2010; Occupied units are recorded from onsite surveyor inspections performed during the Metrostudy residential survey. Closings are calculated as the change in occupied units between quarters.