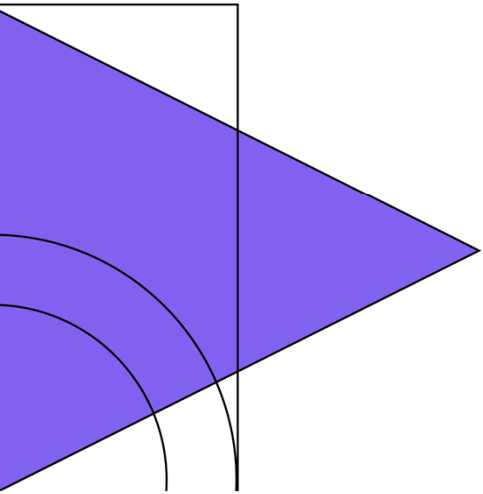
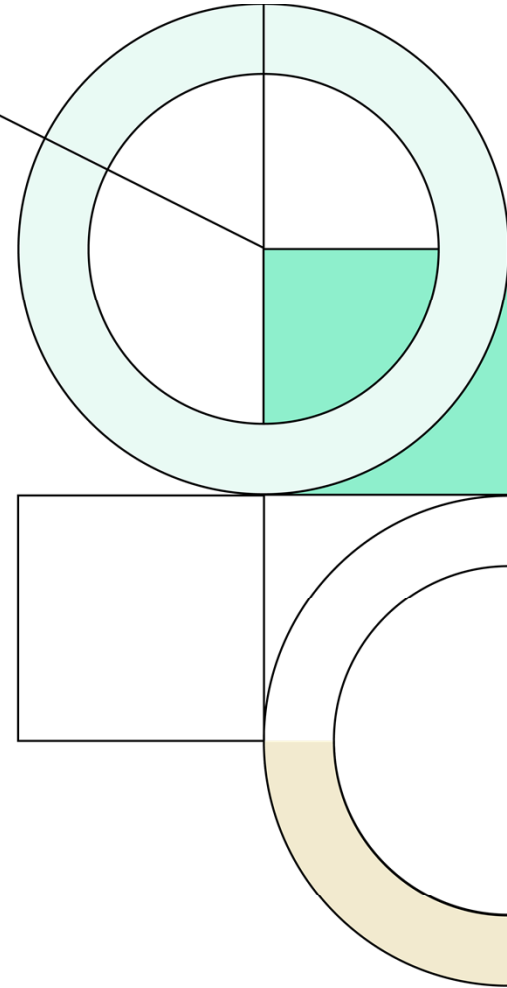




**Lewisville  
Independent  
School  
District**

2Q22

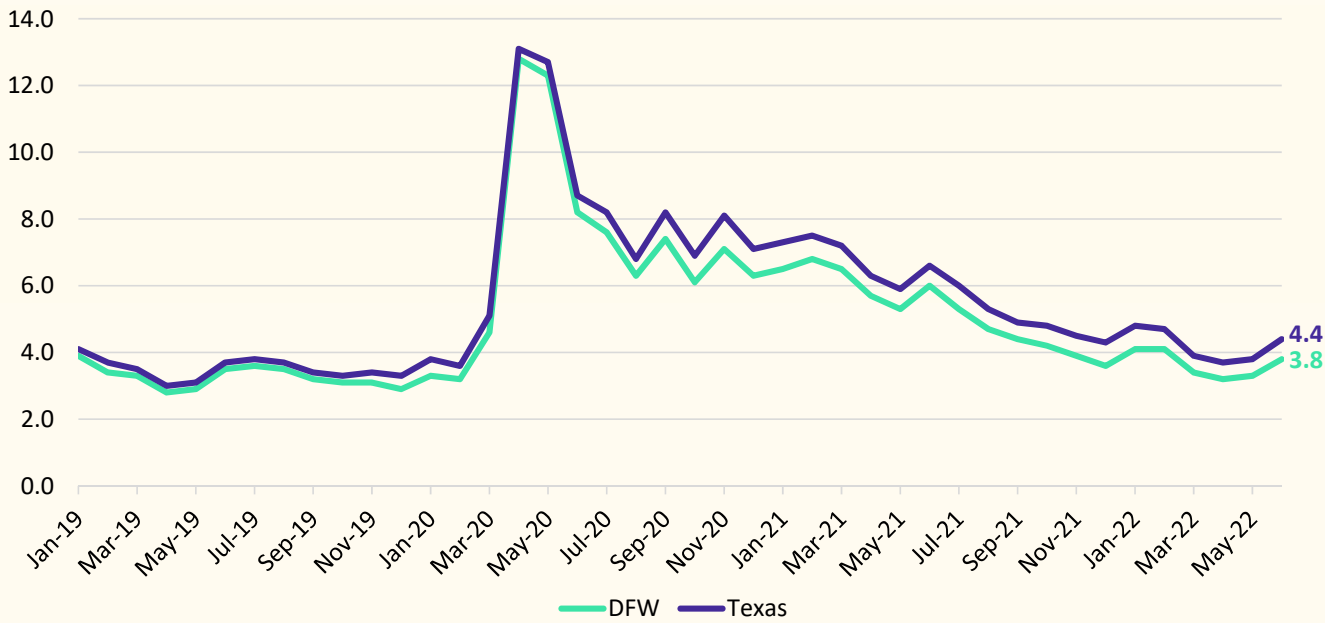
Demographic Report



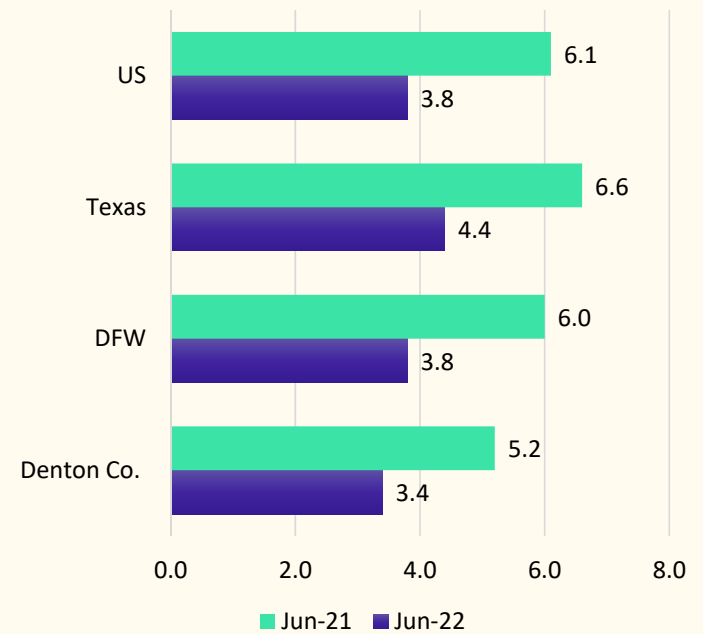


# Local Economic Conditions

### Unemployment Rate, Jan. 2018 - June 2022



### Unemployment Rate, Year over Year





## DFW Remains the Most Active New Home Market Nationally

Rank	Market	Annual Starts	Annual Change	%
1	Dallas/Ft. Worth	54,281	4,413	8.8%
2	Houston	42,567	77	0.2%
3	Central Florida	41,208	5,574	15.6%
4	Phoenix/Tucson	33,600	1,286	4.0%
5	Atlanta	26,578	-5,177	-16.3%
6	Austin	23,146	-43	-0.2%
7	Denver/Colorado Springs	23,165	2845	14.0%
8	Southern California	19,926	-2195	-9.9%
9	San Antonio	23,787	4,828	25.5%
10	Salt Lake City	19,268	1,602	9.1%
11	Tampa	14,959	-1,629	-9.8%
12	Raleigh/Durham	15,030	-972	-6.1%
13	Northern California	15,722	11	0.1%
14	Charlotte	14,113	-1,241	-8.1%
15	Philadelphia Region	12,894	-1,326	-9.3%
16	Central California	12,649	-1,873	-12.9%
17	Las Vegas	13,835	-64	-0.5%
18	Jacksonville	13,828	1,406	11.3%
19	Suburban Maryland	10,229	-2,136	-17.3%
20	South Florida	12,328	66	0.5%
21	Nashville	10,932	-651	-5.6%
22	Sarasota	13,145	2,319	21.4%
23	Seattle	9,478	-762	-7.4%
24	Twin Cities	10,141	-304	-2.9%
25	Northern Virginia	9,181	-505	-5.2%

4

Texas Markets in the national Top 10 rankings

1st

DFW's national rank in terms of starts volume

14 of the top 25

Highest volume new home markets have seen annual starts decline YOY





## Interest Rates – Monthly Payment Comparison

### Since January 2022

- Mortgage Rates up ~66%
- Base Prices up 7%

### January Monthly Payment

3.5% Interest Rate and \$343,221

Median Base Price: **\$1,905**

### June Monthly Payment

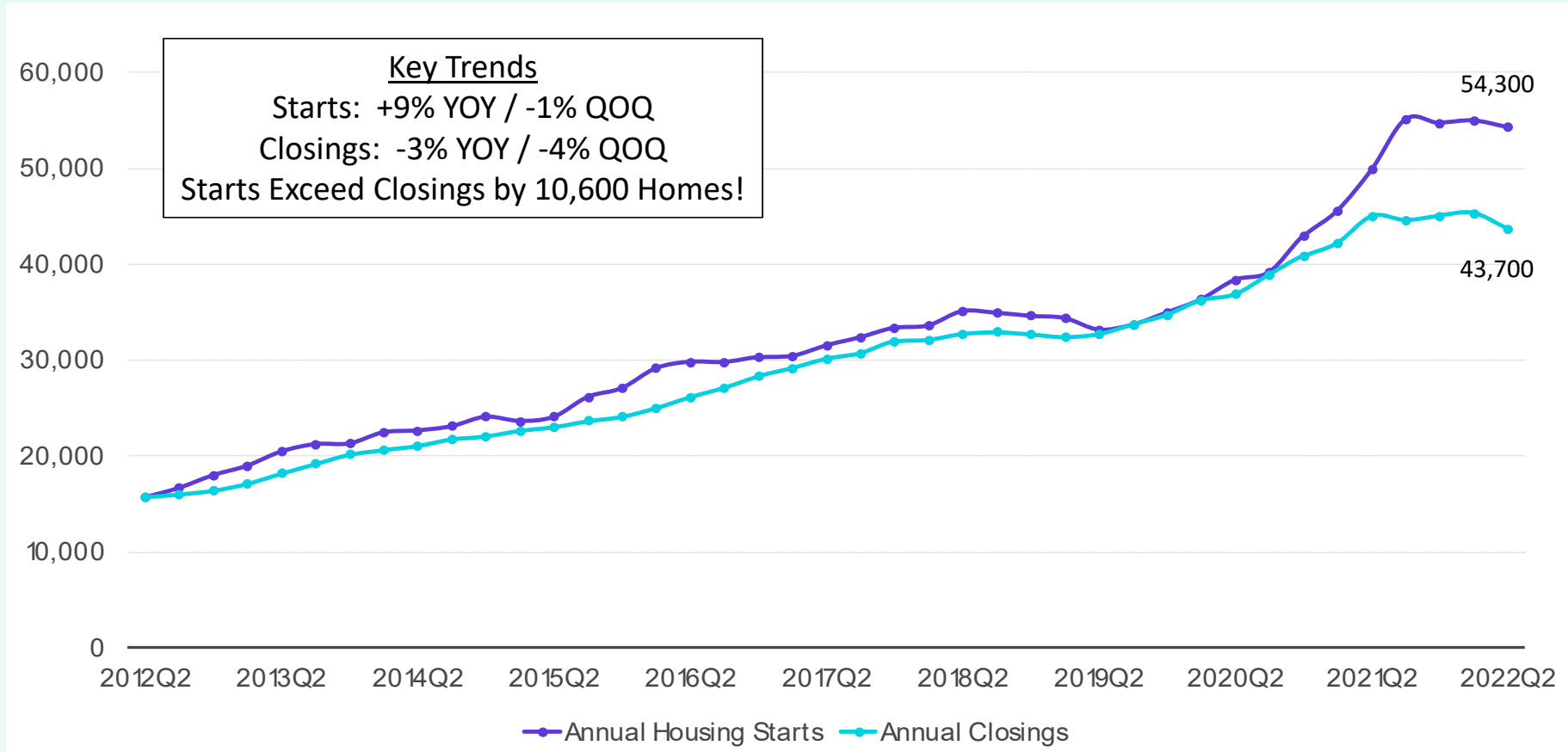
5.8% Interest Rate and \$365,700

Median Base Price: **\$2,434**

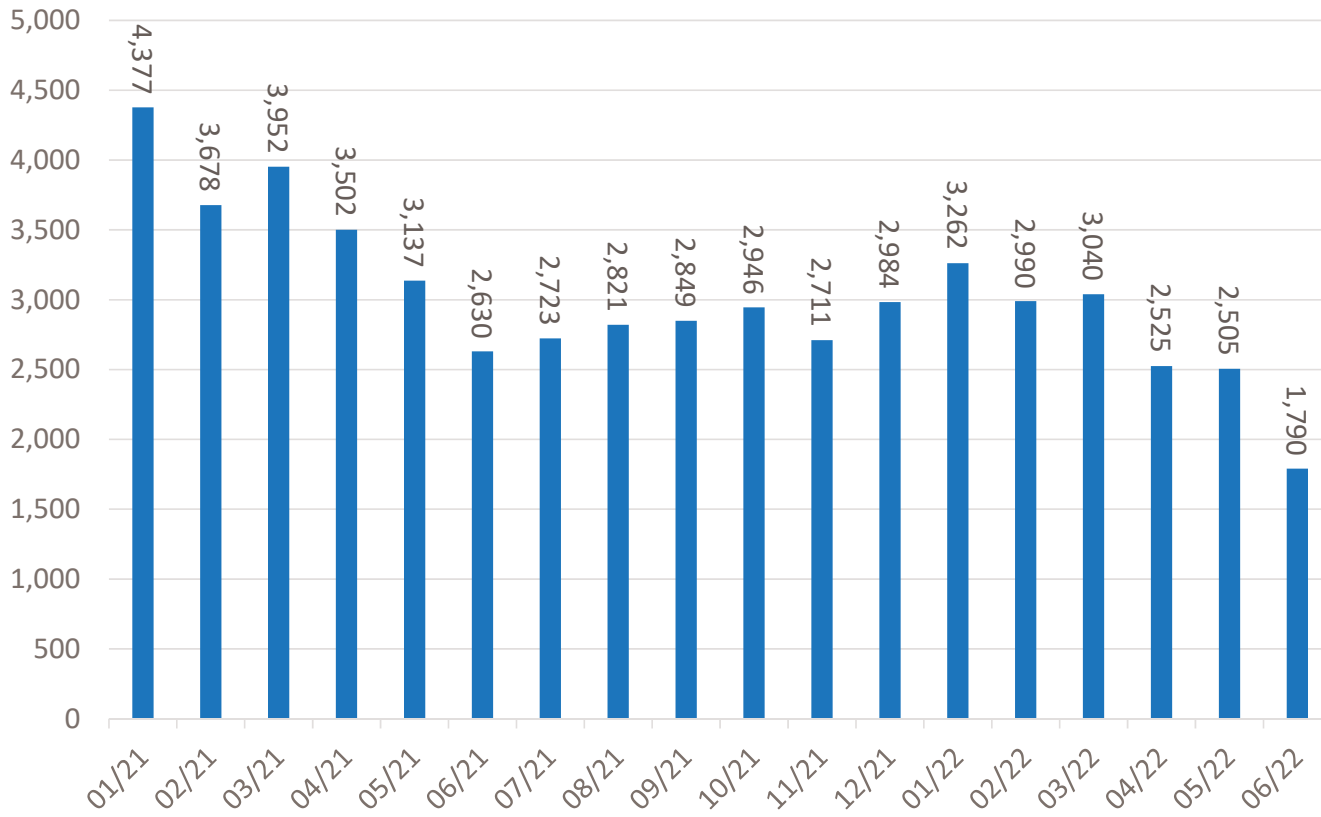
Monthly  
Payment  
up **\$529**  
(~28%)



# DFW New Home Starts & Closings are Flattening Out



# Monthly New Home Sales Contracts Dropped 29% in June



County	MOM Change
Dallas	-4%
Tarrant	-17%
Collin	-19%
Wise	-22%
Parker	-33%
Hunt	-34%
Kaufman	-34%
Denton	-36%
Johnson	-43%
Rockwall	-43%
Ellis	-48%
DFW	-29%

Source: Zonda



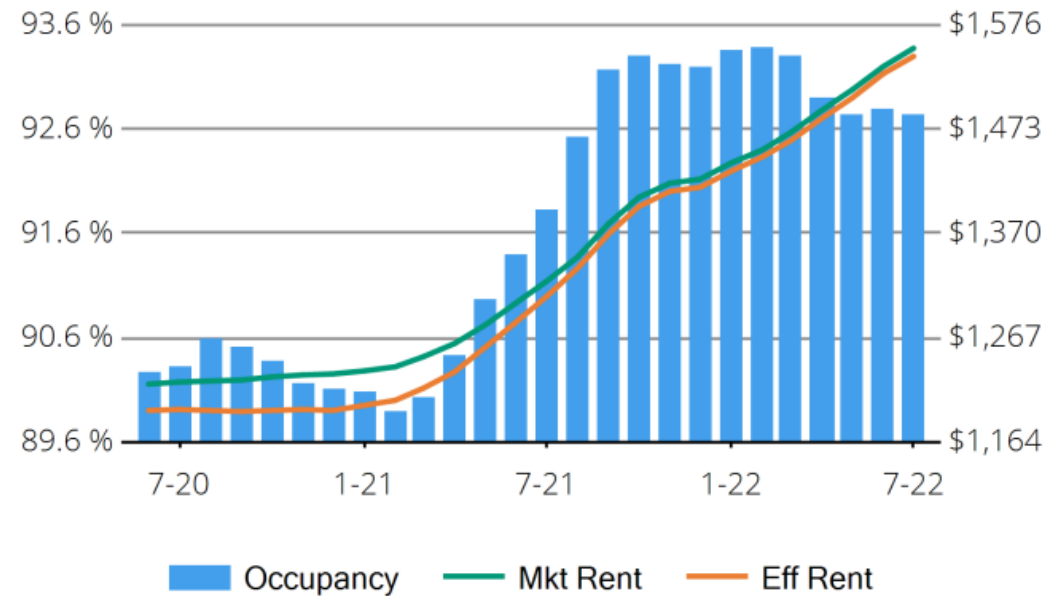
# Housing Market Trends: Multi-family Market



## Stabilized and Lease-up Properties

Conventional Properties	Jul 2022	Annual Change
Occupancy	92.7	+1.0%
Unit Change	20,706	
Units Absorbed (Annual)	26,126	
Average Size (SF)	872	+0.2%
Asking Rent	\$1,552	+17.5%
Asking Rent per SF	\$1.78	+17.2%
Effective Rent	\$1,544	+18.3%
Effective Rent per SF	\$1.77	+18.0%
% Offering Concessions	8%	-56.1%
Avg. Concession Package	4.8%	-13.9%

### Dallas/Fort Worth, TX





# DFW New Home Ranking Report

ISD Ranked by Annual Closings – 2Q22

Rank	District Name	Annual Starts	Annual Closings	Inventory	Vacant Dev. Lots	Future Lots
1	NORTHWEST ISD	4,519	3,608	2,508	3,040	38,878
2	DENTON ISD	2,817	2,753	2,160	3,124	31,273
3	FORNEY ISD	2,484	2,712	1,109	2,412	30,175
4	PROSPER ISD	2,757	2,465	2,257	2,907	20,725
5	FRISCO ISD	1,590	1,799	1,291	1,339	9,749
6	DALLAS ISD	2,031	1,614	1,834	2,128	6,257
7	PRINCETON ISD	2,434	1,557	1,609	1,826	9,571
8	ROYSE CITY ISD	1,812	1,312	1,348	1,929	8,515
9	MIDLOTHIAN ISD	1,341	1,157	916	1,037	20,949
10	CROWLEY ISD	1,334	1,154	796	2,130	16,373
11	CRANDALL ISD	1,486	1,138	890	1,021	13,856
12	WAXAHACHIE ISD	1,030	1,072	540	1,172	26,958
<b>13</b>	<b>LEWISVILLE ISD**</b>	<b>1,251</b>	<b>993</b>	<b>995</b>	<b>1,188</b>	<b>1,793*</b>
14	EAGLE MT-SAGINAW ISD	1,225	987	820	2,277	16,479
15	ROCKWALL ISD	1,411	942	1,214	2,369	8,989
16	MCKINNEY ISD	1,146	940	883	1,512	14,761
17	ANNA ISD	1,164	913	732	698	12,549
18	CELINA ISD	1,330	880	1,035	765	33,549
19	AUBREY ISD	1,590	841	1,154	680	5,737
20	COMMUNITY ISD	1,246	837	895	717	15,246

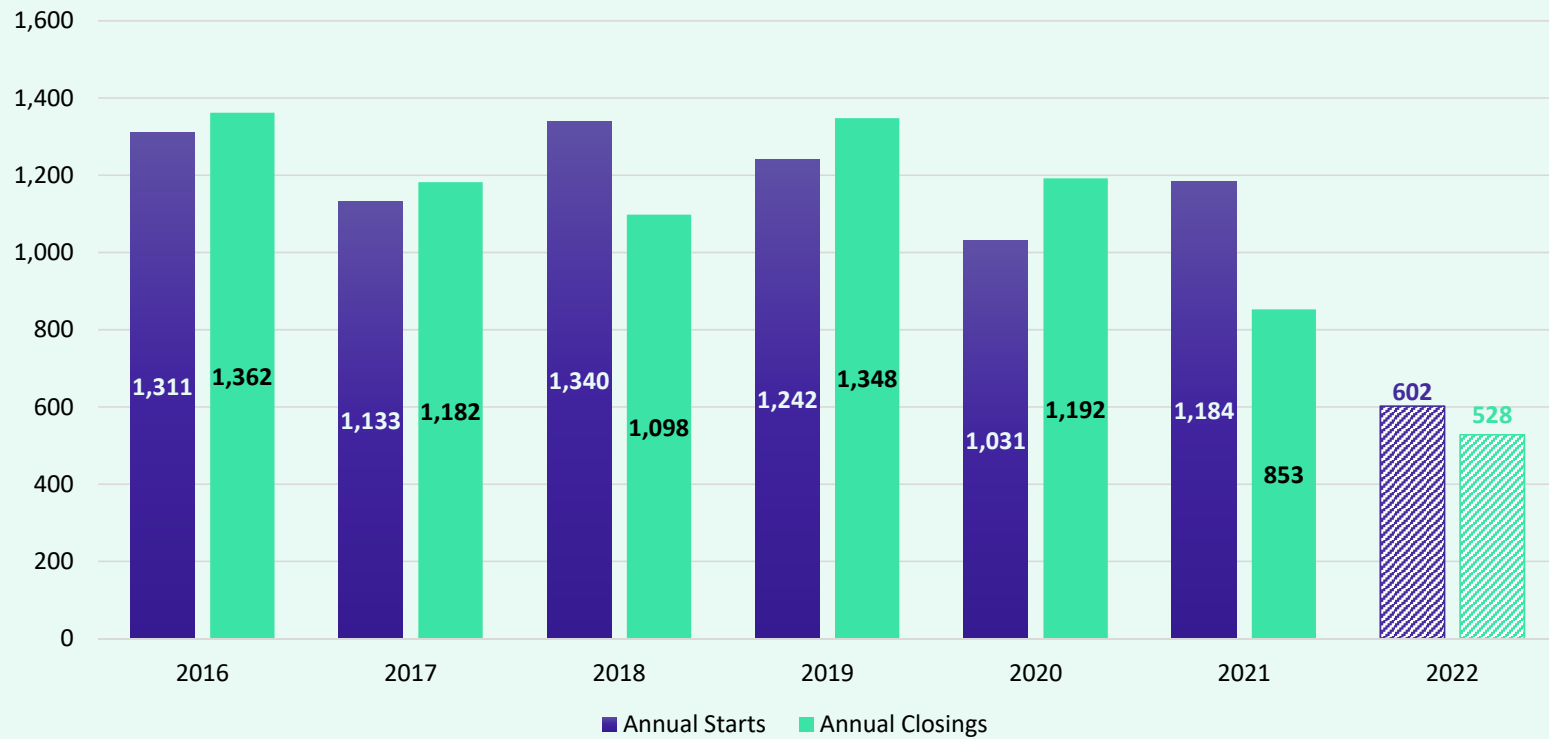
\* Based on additional housing research by Zonda Education

\*\* Totals DO NOT include age restricted communities





# District New Home Activity



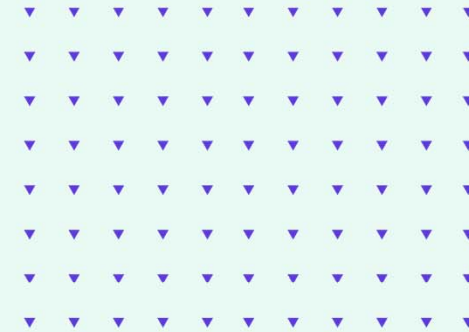
Starts	2016	2017	2018	2019	2020	2021	2022
1Q	338	286	252	317	267	254	262
2Q	313	284	366	273	280	319	340
3Q	400	301	483	372	245	359	
4Q	260	262	239	280	239	252	
Total	1,311	1,133	1,340	1,242	1,031	1,184	602

Closings	2016	2017	2018	2019	2020	2021	2022
1Q	356	340	185	265	303	214	203
2Q	304	304	307	341	272	203	325
3Q	362	295	327	372	300	211	
4Q	340	243	279	370	317	225	
Total	1,362	1,182	1,098	1,348	1,192	853	528



# District Housing Overview by Elementary Zone

Elementary	Annual Starts	Quarter Starts	Annual Closings	Quarter Closings	Under Construction	Inventory	Vacant Dev. Lots	Future
BLUEBONNET	136	59	164	32	121	122	63	127
BRIDLEWOOD	4	0	3	0	3	3	2	0
CAMEY	18	3	10	0	14	14	0	0
CASTLE HILLS	16	1	14	12	4	13	41	0
DEGAN	12	1	12	6	19	20	44	0
DONALD	1	0	0	0	1	1	0	0
ETHRIDGE	0	0	0	0	0	0	0	4
FLOWER MOUND	143	25	56	29	128	134	162	50
HERITAGE	63	12	19	8	49	50	24	65
HIGHLAND VILLAGE	4	0	6	0	3	3	1	0
INDEPENDENCE	77	40	25	0	68	71	162	0
INDIAN CREEK	73	28	124	26	36	36	86	85
LAKELAND	0	0	0	0	0	0	0	52
LEWISVILLE	13	1	17	7	14	14	0	83
LIBERTY	41	14	31	9	33	35	43	112
MCAULIFFE	0	0	0	0	0	0	9	0
MEMORIAL	324	57	212	97	188	200	356	144
MILL STREET	20	6	77	12	24	24	1	12
MORNINGSIDE	0	0	0	0	0	0	0	154
OLD SETTLERS	3	1	1	0	3	3	17	4
OWEN	5	0	5	0	0	0	33	0
PRAIRIE TRAIL	0	0	0	0	0	0	0	156
ROCKBROOK	47	21	28	9	54	55	9	18
SOUTHRIDGE	32	12	27	9	35	39	47	0
TOM HICKS	65	13	48	20	44	48	61	412
VALLEY RIDGE	154	46	110	49	104	110	27	232
VICKERY	0	0	0	0	0	0	0	54
WELLINGTON	0	0	0	0	0	0	0	29
<b>Grand Total</b>	<b>1,251</b>	<b>340</b>	<b>993</b>	<b>325</b>	<b>945</b>	<b>995</b>	<b>1,188</b>	<b>1,793</b>



- Highest activity in the category
- Second highest activity in the category
- Third highest activity in the category

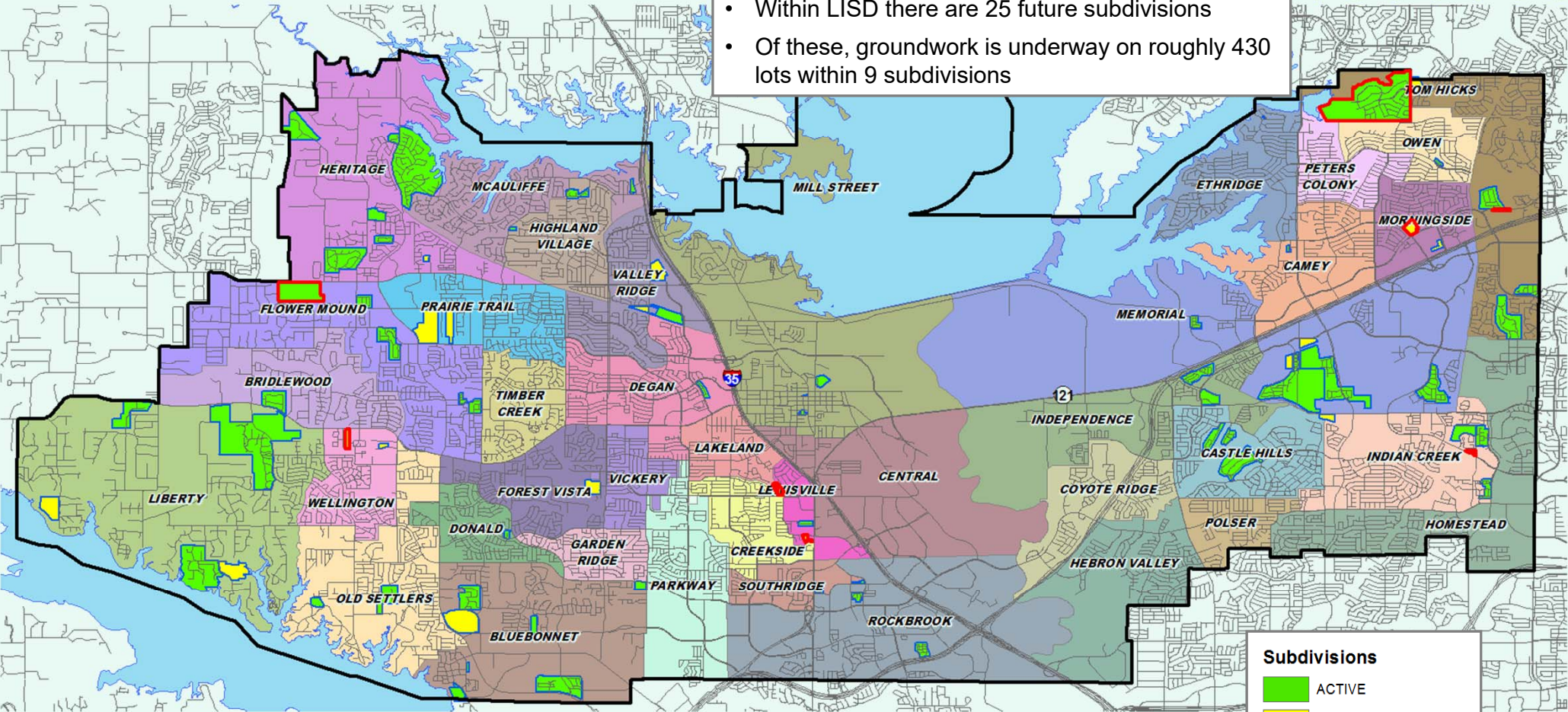
\*Totals **DO NOT** include age-restricted communities  
 \*\*Only elementary zones with activity are shown





# District Housing Overview

- The district has 56 actively building subdivisions
- Within LISD there are 25 future subdivisions
- Of these, groundwork is underway on roughly 430 lots within 9 subdivisions

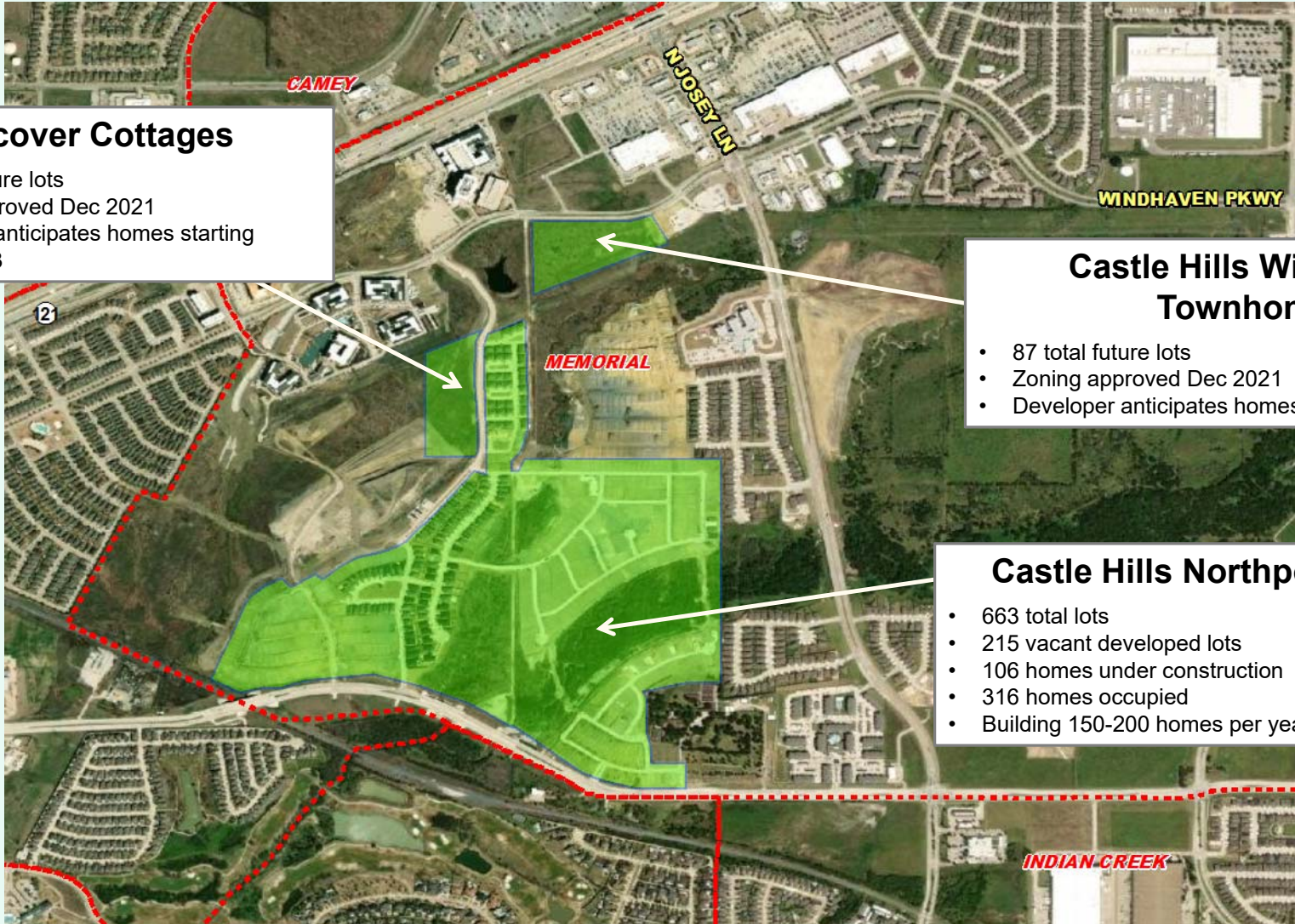


**Subdivisions**

- ACTIVE
- FUTURE
- Groundwork Underway



# Residential Activity



## Discover Cottages

- 57 total future lots
- Zoning approved Dec 2021
- Developer anticipates homes starting spring 2023

## Castle Hills Windhaven Townhomes

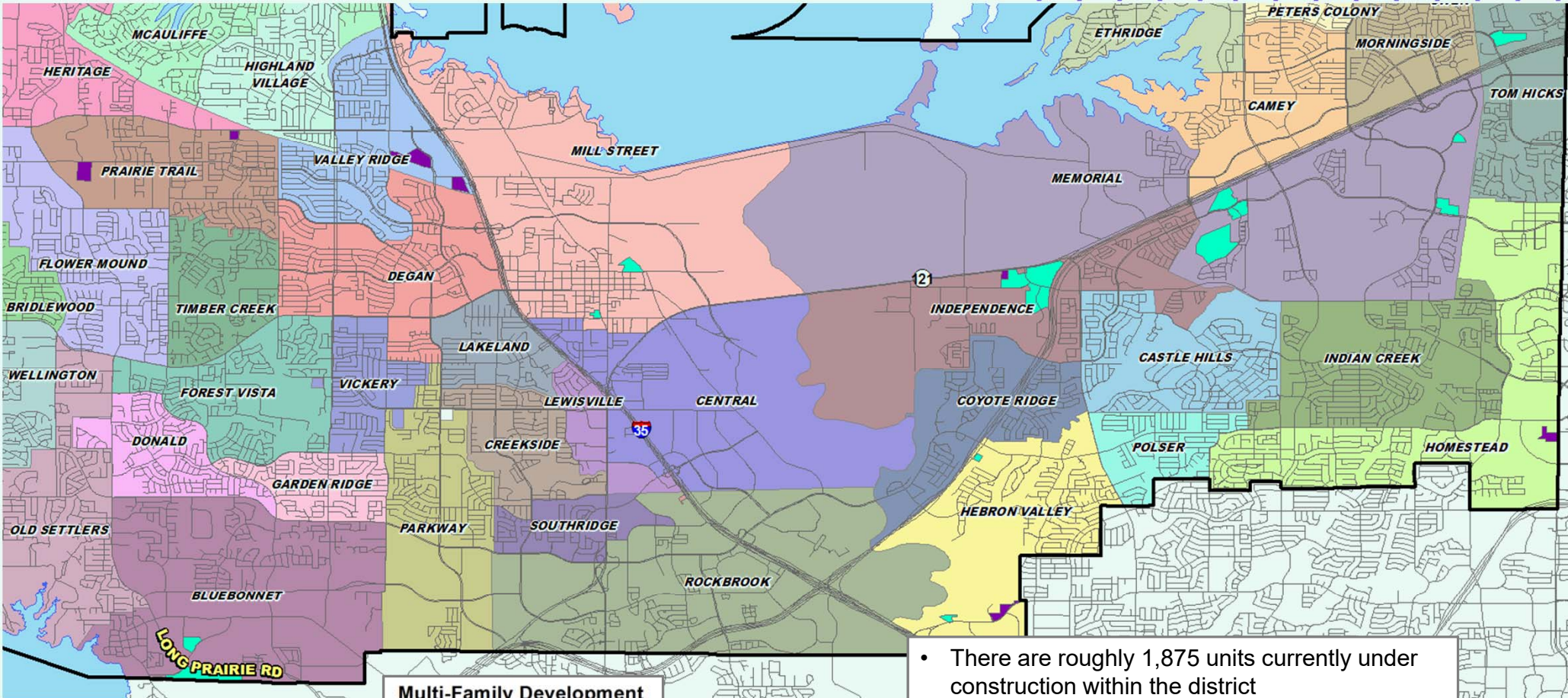
- 87 total future lots
- Zoning approved Dec 2021
- Developer anticipates homes starting spring 2023

## Castle Hills Northpointe

- 663 total lots
- 215 vacant developed lots
- 106 homes under construction
- 316 homes occupied
- Building 150-200 homes per year



# District Multi-Family Overview



**Multi-Family Development**

- Future Development
- Under Construction

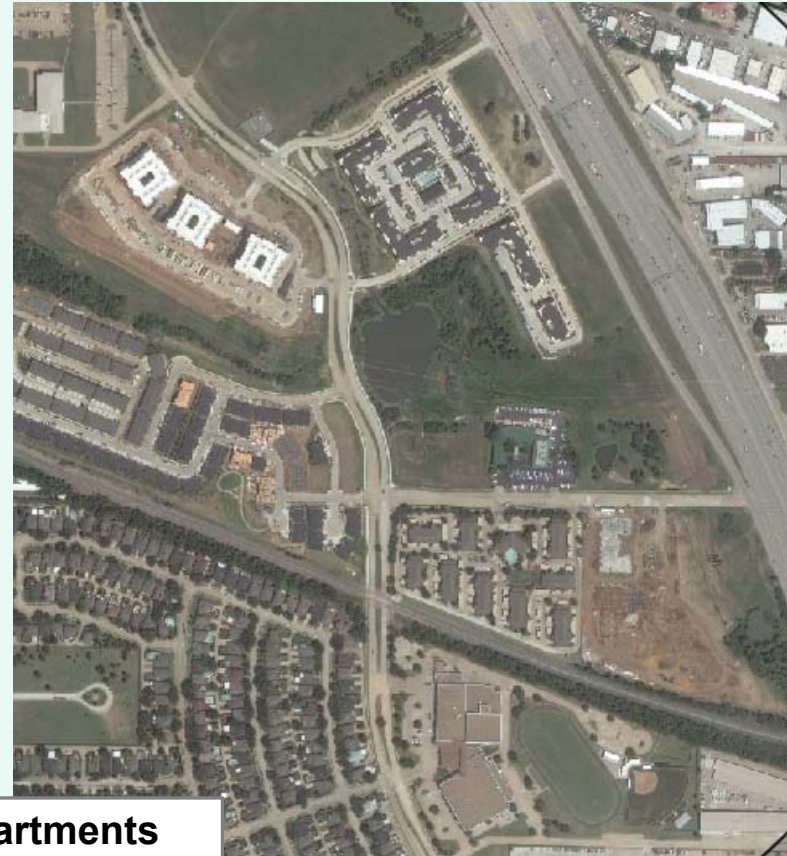
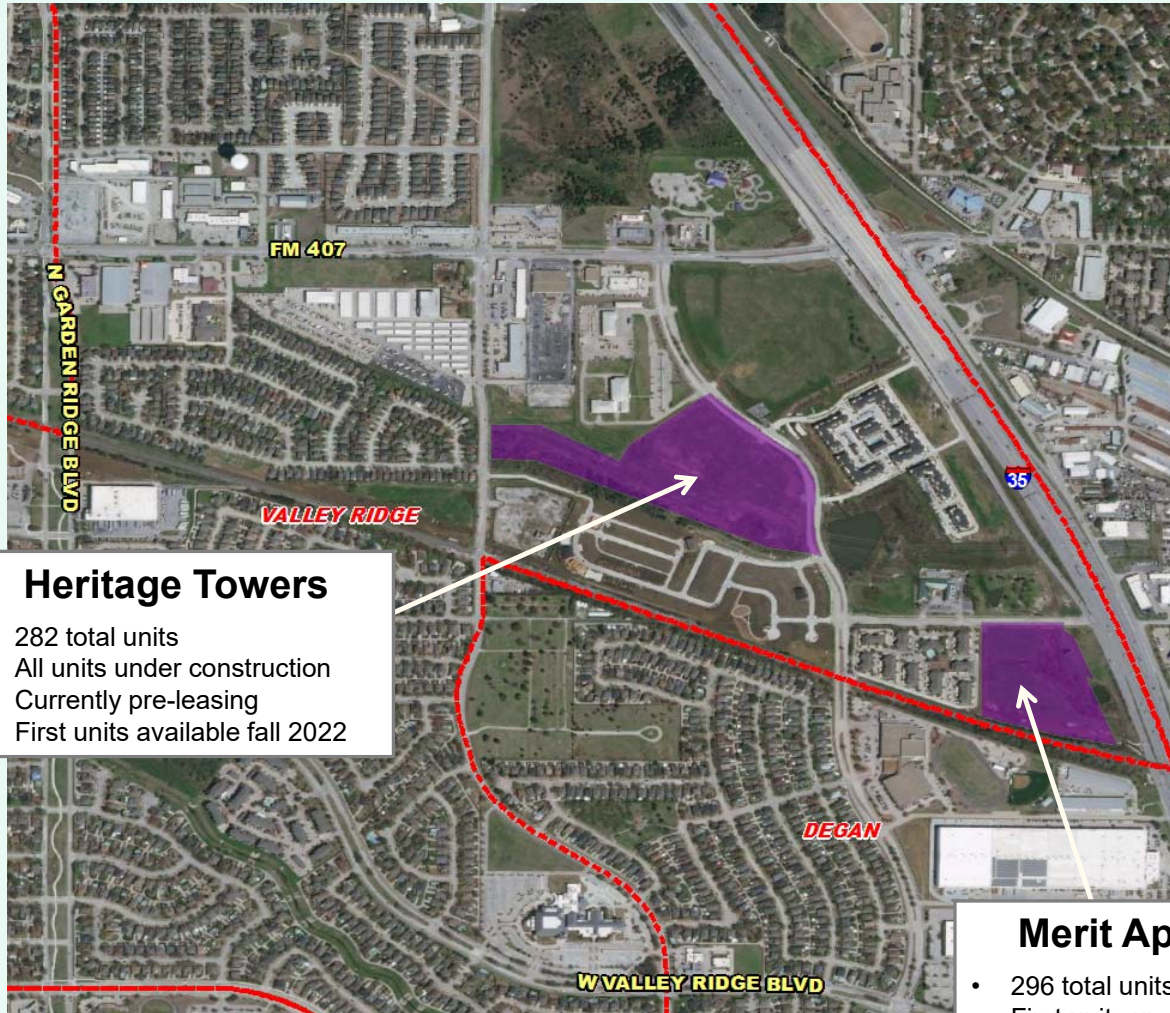
- There are roughly 1,875 units currently under construction within the district
- Within LISD there are more than 9,600 future multi-family units in various planning stages



# Multi-Family Activity



June 2022



**Heritage Towers**

- 282 total units
- All units under construction
- Currently pre-leasing
- First units available fall 2022

**Merit Apartments**

- 296 total units
- First units under construction
- First units available spring 2023



# Multi-Family Activity

## Castle Hills Crown Centre

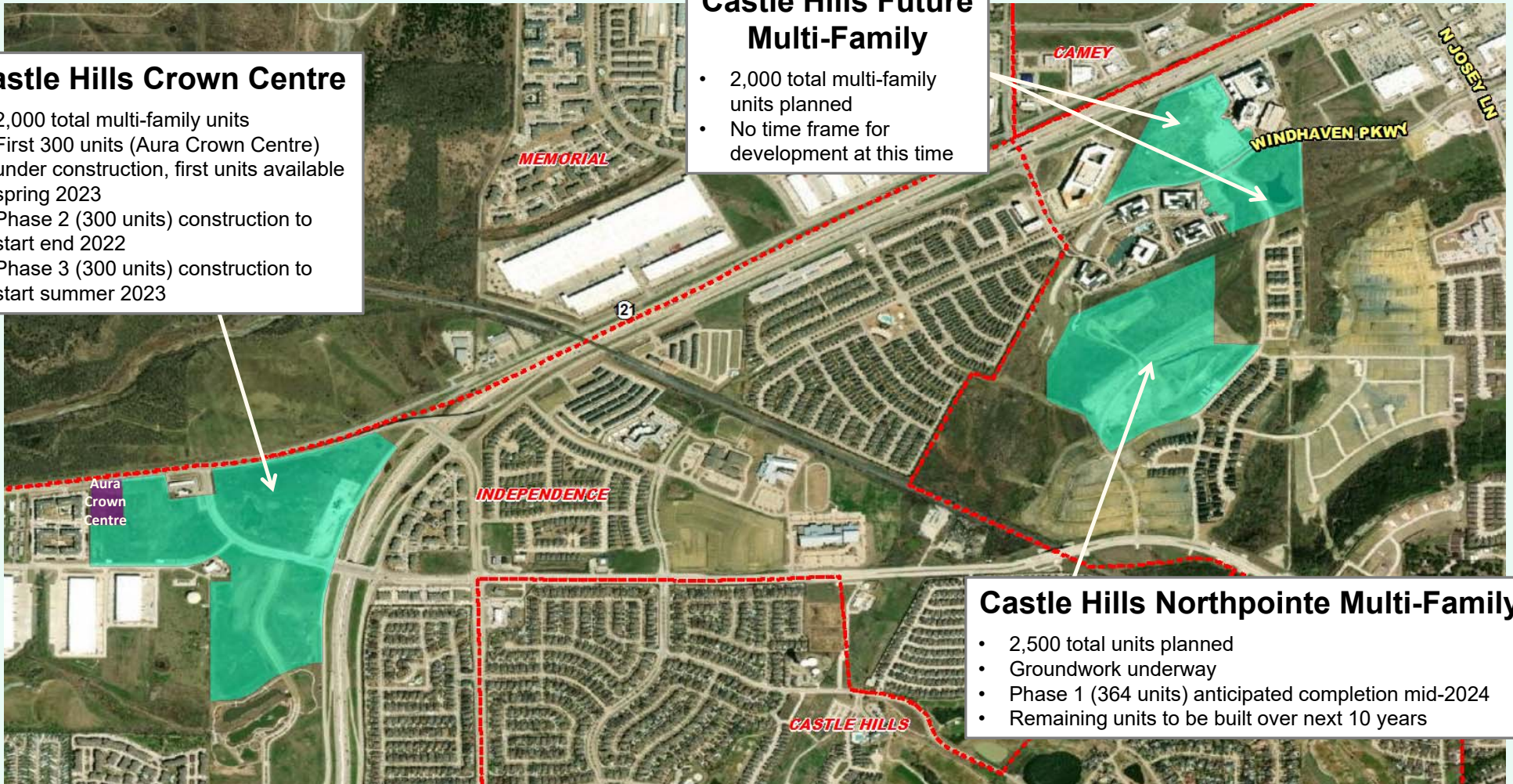
- 2,000 total multi-family units
- First 300 units (Aura Crown Centre) under construction, first units available spring 2023
- Phase 2 (300 units) construction to start end 2022
- Phase 3 (300 units) construction to start summer 2023

## Castle Hills Future Multi-Family

- 2,000 total multi-family units planned
- No time frame for development at this time

## Castle Hills Northpointe Multi-Family

- 2,500 total units planned
- Groundwork underway
- Phase 1 (364 units) anticipated completion mid-2024
- Remaining units to be built over next 10 years





# Ten Year Forecast by Grade Level

Year (OCT)	EE	PK	EE/PK	K	1st	2nd	3rd	4th	5th	6th	7th	8th	9th	10th	11th	12th	Totals	Total Growth	% Growth
2017/18	181	1,618	1,799	3,304	3,400	3,462	3,695	3,626	3,824	3,906	4,064	4,168	4,374	4,342	4,306	4,202	52,472		
2018/19	240	1,652	1,892	3,311	3,416	3,406	3,524	3,763	3,746	3,892	3,957	4,147	4,369	4,315	4,223	4,257	52,218	-254	-0.5%
2019/20	238	1,650	1,888	3,538	3,412	3,497	3,495	3,576	3,806	3,875	3,933	3,982	4,456	4,317	4,258	4,156	52,189	-29	-0.1%
2020/21	233	926	1,159	2,939	3,345	3,227	3,332	3,422	3,474	3,732	3,850	3,943	4,252	4,353	4,178	4,204	49,410	-2,779	-5.3%
2021/22	207	1,091	1,298	3,159	3,222	3,362	3,320	3,344	3,427	3,585	3,749	3,901	4,319	4,193	4,162	4,128	49,169	-242	-0.5%
2022/23	207	1,209	1,416	3,259	3,270	3,295	3,423	3,377	3,427	3,499	3,611	3,779	4,173	4,246	4,107	4,095	48,977	-191	-0.4%
2023/24	207	1,218	1,425	3,348	3,343	3,307	3,353	3,472	3,444	3,478	3,519	3,649	4,057	4,112	4,119	4,054	48,680	-297	-0.6%
2024/25	207	1,193	1,400	3,350	3,464	3,343	3,332	3,360	3,498	3,521	3,497	3,555	3,932	4,005	3,997	4,069	48,322	-358	-0.7%
2025/26	207	1,199	1,406	3,378	3,453	3,507	3,395	3,380	3,428	3,557	3,544	3,533	3,811	3,869	3,907	3,961	48,129	-194	-0.4%
2026/27	207	1,215	1,422	3,394	3,477	3,483	3,554	3,433	3,434	3,497	3,578	3,583	3,796	3,753	3,769	3,864	48,037	-92	-0.2%
2027/28	207	1,210	1,417	3,397	3,498	3,501	3,528	3,588	3,485	3,503	3,520	3,615	3,851	3,739	3,659	3,730	48,031	-5	0.0%
2028/29	207	1,217	1,424	3,424	3,506	3,528	3,549	3,570	3,646	3,553	3,526	3,558	3,881	3,794	3,644	3,625	48,228	197	0.4%
2029/30	207	1,225	1,432	3,433	3,531	3,533	3,581	3,589	3,627	3,714	3,578	3,562	3,827	3,818	3,694	3,608	48,527	299	0.6%
2030/31	207	1,228	1,435	3,451	3,539	3,556	3,587	3,619	3,649	3,694	3,738	3,617	3,832	3,767	3,719	3,658	48,860	334	0.7%
2031/32	208	1,232	1,440	3,471	3,560	3,567	3,608	3,627	3,677	3,719	3,718	3,776	3,889	3,769	3,669	3,681	49,171	311	0.6%

Yellow box = largest grade per year  
Green box = second largest grade per year





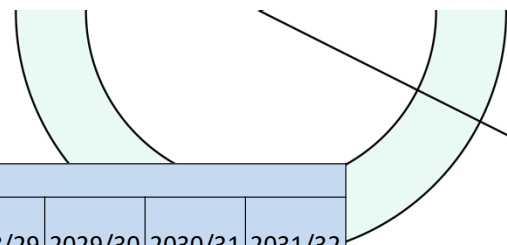
# Ten Year Forecast by Elementary Campus

CAMPUS	Functional Capacity	2020 Maximum Capacity	ENROLLMENT PROJECTIONS											
			2020/21	Fall 2021/22	2022/23	2023/24	2024/25	2025/26	2026/27	2027/28	2028/29	2029/30	2030/31	2031/32
BLUEBONNET ELEMENTARY	574	638	515	556	580	606	658	684	716	759	785	812	828	851
BRIDLEWOOD ELEMENTARY	792	880	477	545	549	556	570	570	553	562	563	557	562	562
CAMEY ELEMENTARY	693	770	572	502	503	497	488	507	495	502	506	507	509	509
CASTLE HILLS ELEMENTARY	673	748	679	696	712	705	690	680	708	707	707	695	694	689
CENTRAL ELEMENTARY	752	836	539	526	546	542	530	517	517	513	521	522	530	540
COYOTE RIDGE ELEMENTARY	733	814	572	531	564	565	577	555	549	555	551	555	559	560
CREEKSIDE ELEMENTARY	594	660	422	440	446	430	437	415	430	441	452	454	454	449
DEGAN ELEMENTARY	653	726	502	493	485	501	499	524	527	550	551	556	562	563
DONALD ELEMENTARY	792	880	583	592	590	586	581	586	561	569	573	573	573	569
ETHRIDGE ELEMENTARY	455	506	410	375	372	364	364	377	394	416	441	457	465	473
FLOWER MOUND ELEMENTARY	653	726	460	504	534	538	571	588	610	612	610	608	613	621
FOREST VISTA ELEMENTARY	871	968	485	535	538	535	535	541	548	543	539	535	528	525
GARDEN RIDGE ELEMENTARY	535	594	371	375	387	392	403	412	416	415	420	413	415	410
HEBRON VALLEY ELEMENTARY	752	836	429	432	418	417	415	429	453	457	462	465	468	469
HERITAGE ELEMENTARY	911	1,012	496	508	486	497	499	508	516	529	530	528	526	518
HICKS ELEMENTARY	713	792	650	594	595	589	566	553	547	554	561	566	571	569
HIGHLAND VILLAGE ELEMENTARY	515	572	365	356	364	365	373	367	376	385	384	379	382	383
HOMESTEAD ELEMENTARY	653	726	503	483	492	508	523	543	561	562	561	560	557	552
INDEPENDENCE ELEMENTARY	891	990	840	816	778	741	705	706	690	687	688	694	693	695
INDIAN CREEK ELEMENTARY	673	748	538	536	529	538	525	537	534	540	557	561	566	577
JACKSON EARLY ED. CENTER	810	900	367	422	422	422	422	422	422	422	422	422	422	422
LAKELAND ELEMENTARY	931	1,034	713	664	658	653	618	598	601	603	595	593	585	579

Green = within 5% of maximum capacity  
 Yellow = exceeds 105% maximum capacity



# Ten Year Forecast by Elementary Campus- cont'd

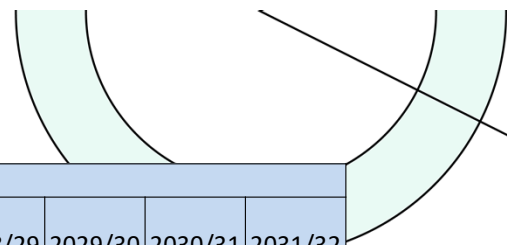


CAMPUS	Functional Capacity	2020 Maximum Capacity	ENROLLMENT PROJECTIONS											
			2020/21	Fall 2021/22	2022/23	2023/24	2024/25	2025/26	2026/27	2027/28	2028/29	2029/30	2030/31	2031/32
LEWISVILLE ELEMENTARY	772	858	550	535	519	529	551	556	584	594	615	629	639	654
LIBERTY ELEMENTARY	891	990	484	533	495	499	518	526	507	516	531	536	542	554
LLC ELEMENTARY SCHOOL	0		15	11	11	11	11	11	11	11	11	11	11	11
MCAULIFFE ELEMENTARY	554	616	538	548	558	559	563	572	585	587	592	587	587	592
MEMORIAL ELEMENTARY	720		0	467	613	716	610	655	641	627	654	677	693	724
MILL ST. ELEMENTARY	792	880	570	596	661	680	705	700	693	690	699	707	720	739
MORNINGSIDE ELEMENTARY	495	550	343	361	374	390	408	419	459	474	480	486	496	501
OLD SETTLERS ELEMENTARY	891	990	524	510	486	478	474	476	491	498	511	518	525	534
OWEN ELEMENTARY	693	770	283	265	295	293	302	322	330	327	332	331	331	329
PARKWAY ELEMENTARY	673	748	557	590	598	635	665	686	703	702	703	706	712	727
PETERS COLONY ELEMENTARY	733	814	544	535	555	572	563	556	562	569	573	576	578	581
POLSER ELEMENTARY	713	792	449	462	474	470	460	457	443	430	433	434	430	430
PRAIRIE TRAIL ELEMENTARY	871	968	635	635	624	632	642	648	661	656	663	661	661	662
ROCKBROOK ELEMENTARY	891	990	640	650	671	687	708	726	732	744	750	752	750	747
SOUTHRIDGE ELEMENTARY	634	704	557	563	593	620	655	687	716	736	738	729	725	715
STEWARTS CREEK ELEMENTARY	495	550	256	0	0	0	0	0	0	0	0	0	0	0
TIMBER CREEK ELEMENTARY	515	572	453	457	470	490	480	479	499	505	513	515	519	522
VALLEY RIDGE ELEMENTARY	851	946	533	552	572	574	595	589	590	597	605	602	600	601
VICKERY ELEMENTARY	851	946	677	629	593	577	554	531	522	519	518	511	506	498
WELLINGTON ELEMENTARY	911	1,012	802	752	757	734	733	731	743	749	748	745	750	743
<b>ELEMENTARY TOTALS</b>	<b>29,565</b>	<b>32,052</b>	<b>20,898</b>	<b>21,132</b>	<b>21,467</b>	<b>21,692</b>	<b>21,747</b>	<b>21,947</b>	<b>22,197</b>	<b>22,414</b>	<b>22,647</b>	<b>22,726</b>	<b>22,836</b>	<b>22,949</b>
Elementary Total Change			-2314	234	335	225	55	200	250	218	233	79	110	114
Elementary Percent Change			-9.97%	1.12%	1.59%	1.05%	0.25%	0.92%	1.14%	0.98%	1.04%	0.35%	0.48%	0.50%

Green = within 5% of maximum capacity  
 Yellow = exceeds 105% maximum capacity



# Ten Year Forecast by Elementary Campus- cont'd



CAMPUS	Functional Capacity	2020 Maximum Capacity	ENROLLMENT PROJECTIONS											
			2020/21	Fall 2021/22	2022/23	2023/24	2024/25	2025/26	2026/27	2027/28	2028/29	2029/30	2030/31	2031/32
LEWISVILLE ELEMENTARY	772	858	550	535	519	529	551	556	584	594	615	629	639	654
LIBERTY ELEMENTARY	891	990	484	533	495	499	518	526	507	516	531	536	542	554
LLC ELEMENTARY SCHOOL	0		15	11	11	11	11	11	11	11	11	11	11	11
MCAULIFFE ELEMENTARY	554	616	538	548	558	559	563	572	585	587	592	587	587	592
MEMORIAL ELEMENTARY	720		0	467	613	716	610	655	641	627	654	677	693	724
MILL ST. ELEMENTARY	792	880	570	596	661	680	705	700	693	690	699	707	720	739
MORNINGSIDE ELEMENTARY	495	550	343	361	374	390	408	419	459	474	480	486	496	501
OLD SETTLERS ELEMENTARY	891	990	524	510	486	478	474	476	491	498	511	518	525	534
OWEN ELEMENTARY	693	770	283	265	295	293	302	322	330	327	332	331	331	329
PARKWAY ELEMENTARY	673	748	557	590	598	635	665	686	703	702	703	706	712	727
PETERS COLONY ELEMENTARY	733	814	544	535	555	572	563	556	562	569	573	576	578	581
POLSER ELEMENTARY	713	792	449	462	474	470	460	457	443	430	433	434	430	430
PRAIRIE TRAIL ELEMENTARY	871	968	635	635	624	632	642	648	661	656	663	661	661	662
ROCKBROOK ELEMENTARY	891	990	640	650	671	687	708	726	732	744	750	752	750	747
SOUTHRIDGE ELEMENTARY	634	704	557	563	593	620	655	687	716	736	738	729	725	715
STEWARTS CREEK ELEMENTARY	495	550	256	0	0	0	0	0	0	0	0	0	0	0
TIMBER CREEK ELEMENTARY	515	572	453	457	470	490	480	479	499	505	513	515	519	522
VALLEY RIDGE ELEMENTARY	851	946	533	552	572	574	595	589	590	597	605	602	600	601
VICKERY ELEMENTARY	851	946	677	629	593	577	554	531	522	519	518	511	506	498
WELLINGTON ELEMENTARY	911	1,012	802	752	757	734	733	731	743	749	748	745	750	743
<b>ELEMENTARY TOTALS</b>	<b>29,565</b>	<b>32,052</b>	<b>20,898</b>	<b>21,132</b>	<b>21,467</b>	<b>21,692</b>	<b>21,747</b>	<b>21,947</b>	<b>22,197</b>	<b>22,414</b>	<b>22,647</b>	<b>22,726</b>	<b>22,836</b>	<b>22,949</b>
Elementary Total Change			-2314	234	335	225	55	200	250	218	233	79	110	114
Elementary Percent Change			-9.97%	1.12%	1.59%	1.05%	0.25%	0.92%	1.14%	0.98%	1.04%	0.35%	0.48%	0.50%

Green = within 5% of maximum capacity  
 Yellow = exceeds 105% maximum capacity



# Ten Year Forecast by Secondary Campus

CAMPUS	Functional Capacity	2020 Maximum Capacity	ENROLLMENT PROJECTIONS											
			2020/21	Fall 2021/22	2022/23	2023/24	2024/25	2025/26	2026/27	2027/28	2028/29	2029/30	2030/31	2031/32
ARBOR CREEK MIDDLE SCHOOL	945	1,050	868	867	858	848	839	847	887	857	844	827	838	862
BRIARHILL MIDDLE SCHOOL	1,035	1,150	843	823	803	771	760	752	738	729	734	779	794	799
CREEK VALLEY MIDDLE SCHOOL	990	1,100	658	640	583	571	567	566	561	554	552	549	551	557
DELAY MIDDLE SCHOOL	1,170	1,300	1,002	941	894	862	829	879	885	888	863	872	885	894
DOWNING MIDDLE SCHOOL	990	1,100	500	481	472	462	486	506	535	553	572	574	578	575
DURHAM MIDDLE SCHOOL	990	1,100	739	746	719	728	729	736	732	756	778	830	865	883
FORESTWOOD MIDDLE SCHOOL	1,260	1,400	895	872	891	895	895	887	917	911	924	914	917	928
GRIFFIN MIDDLE SCHOOL	1,200	1,250	702	752	717	687	700	774	808	826	839	864	875	896
HEDRICK MIDDLE SCHOOL	1,103	1,225	638	651	657	610	587	562	574	576	575	590	592	593
HUFFINES MIDDLE SCHOOL	945	1,050	797	733	705	659	684	700	691	679	666	675	705	716
KILLIAN MIDDLE SCHOOL	1,283	1,425	1,102	1,033	998	975	998	988	936	900	875	884	878	879
LAKEVIEW MIDDLE SCHOOL	891	990	566	468	435	437	426	394	388	364	370	367	385	403
LAMAR MIDDLE SCHOOL	968	1,075	717	723	719	712	702	694	693	707	716	756	755	758
MCKAMY MIDDLE SCHOOL	1,035	1,150	807	833	782	804	767	748	725	733	723	726	735	745
SHADOW RIDGE MIDDLE SCHOOL	900	1,000	630	631	615	584	563	560	547	564	565	606	655	684
LLC MIDDLE SCHOOL			61	37	37	37	37	37	37	37	37	37	37	37
<b>MIDDLE SCHOOL TOTALS</b>	<b>15,705</b>	<b>17,365</b>	<b>11,525</b>	<b>11,231</b>	<b>10,885</b>	<b>10,642</b>	<b>10,569</b>	<b>10,630</b>	<b>10,654</b>	<b>10,634</b>	<b>10,633</b>	<b>10,850</b>	<b>11,045</b>	<b>11,209</b>
Middle School Total Change			-265	-294	-346	-243	-73	61	24	-20	-1	217	195	164
Middle School Percent Change			-2.25%	-2.55%	-3.08%	-2.23%	-0.69%	0.58%	0.23%	-0.19%	-0.01%	2.04%	1.80%	1.48%



# Ten Year Forecast by Secondary Campus

CAMPUS	Functional Capacity	2020 Maximum Capacity	ENROLLMENT PROJECTIONS											
			2020/21	Fall 2021/22	2022/23	2023/24	2024/25	2025/26	2026/27	2027/28	2028/29	2029/30	2030/31	2031/32
FLOWER MOUND 9th GRADE CAMPUS	705	783	909	839	853	806	817	811	800	750	783	793	769	787
HEBRON 9th GRADE CAMPUS	1,361	1,512	858	936	947	860	840	809	814	855	801	799	780	760
MARCUS 9th GRADE CAMPUS	753	837	774	734	736	725	696	705	670	704	709	685	728	744
FLOWER MOUND HIGH SCHOOL	3,402	3,780	2,773	2,764	2,649	2,583	2,472	2,459	2,414	2,405	2,340	2,313	2,307	2,324
HEBRON HIGH SCHOOL	3,208	3,564	2,788	2,717	2,751	2,812	2,815	2,725	2,588	2,540	2,558	2,548	2,533	2,458
LEWISVILLE HIGH SCHOOL	2,576	2,862	2,098	2,027	2,072	2,114	2,062	2,036	1,970	1,860	1,843	1,821	1,874	1,894
LEWISVILLE BEN HARMON HS	1,312	1,458	1,251	1,241	1,210	1,187	1,171	1,141	1,111	1,087	1,124	1,133	1,123	1,162
LEWISVILLE KILLOUGH	1,010	1,122	1,008	1,019	1,004	986	935	849	859	860	883	892	848	846
MARCUS HIGH SCHOOL	3,281	3,645	2,288	2,296	2,259	2,235	2,220	2,185	2,157	2,098	2,106	2,111	2,126	2,150
THE COLONY HIGH SCHOOL	2,989	3,321	2,038	2,023	1,929	1,825	1,764	1,618	1,589	1,610	1,587	1,642	1,678	1,673
LLC HIGH SCHOOL			199	187	193	190	191	190	191	191	191	191	191	191
<b>HIGH SCHOOL TOTALS</b>	<b>20,597</b>	<b>22,884</b>	<b>16,984</b>	<b>16,783</b>	<b>16,603</b>	<b>16,323</b>	<b>15,983</b>	<b>15,528</b>	<b>15,163</b>	<b>14,960</b>	<b>14,925</b>	<b>14,928</b>	<b>14,957</b>	<b>14,989</b>
High School Total Change			-203	-202	-180	-280	-339	-455	-366	-203	-35	3	29	32
High School Percent Change			-1.18%	-1.19%	-1.07%	-1.69%	-2.08%	-2.85%	-2.35%	-1.34%	-0.23%	0.02%	0.19%	0.21%
DENTON COUNTY JJ AEP	0	0	3	23	23	23	23	23	23	23	23	23	23	23
OTHER ALTERNATIVE	0	0	0	0	0	0	0	0	0	0	0	0	0	0
<b>ALTERNATIVE CAMPUS TOTALS</b>	<b>0</b>	<b>0</b>	<b>3</b>	<b>23</b>	<b>23</b>	<b>23</b>	<b>23</b>	<b>23</b>	<b>23</b>	<b>23</b>	<b>23</b>	<b>23</b>	<b>23</b>	<b>23</b>
<b>DISTRICT TOTALS</b>	<b>65,867</b>	<b>72,301</b>	<b>49,410</b>	<b>49,169</b>	<b>48,978</b>	<b>48,680</b>	<b>48,322</b>	<b>48,129</b>	<b>48,037</b>	<b>48,031</b>	<b>48,228</b>	<b>48,527</b>	<b>48,860</b>	<b>49,170</b>
District Total Change			-2,779	-242	-190	-298	-358	-194	-92	-5	197	299	334	310
District Percent Change			-5.32%	-0.49%	-0.39%	-0.61%	-0.73%	-0.40%	-0.19%	-0.01%	0.41%	0.62%	0.69%	0.63%

Green = within 5% of maximum capacity  
 Yellow = exceeds 105% maximum capacity



# The Year Ahead

