

Housing Analysis

Prepared for Lewisville ISD
By Zonda Education



Dallas/Ft. Worth

1Q22

Table of Contents

Area of Interest (Map)

Current Activity and Profile

Quarterly Activity and Inventory

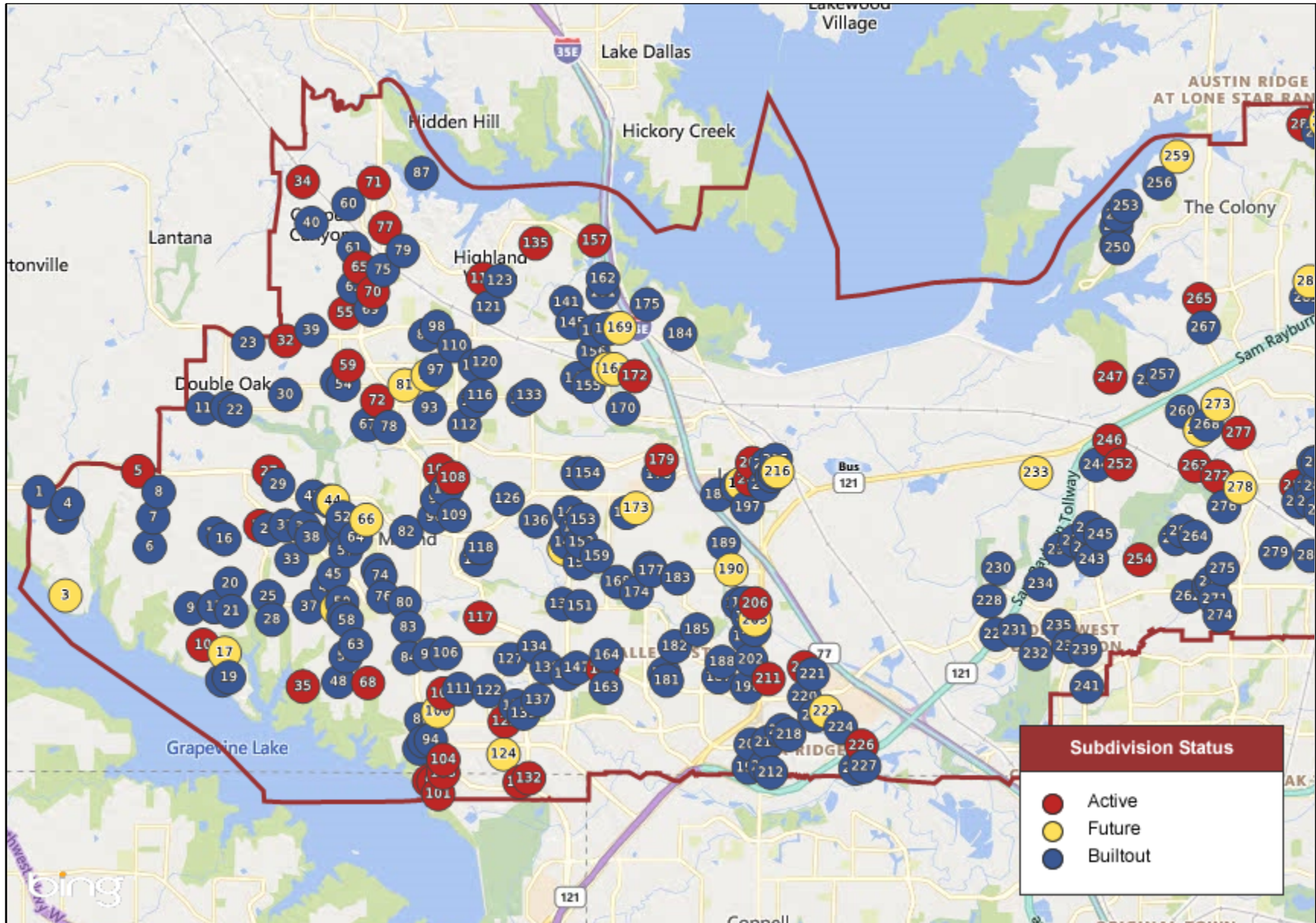
Historical Housing Activity

Price Range Analysis

Household Growth Summary

Area of Interest

Lewisville ISD



Current Activity and Profile Report

Lewisville ISD

Sorted by Subdivision

Map No	Subdivision Name	Sub Area	Status	Lot Size	Price Range	Qtr Starts	Ann Starts	Qtr Clos	Ann Clos	Occ	Inventory			VDL	Future	Total
											Mod	Fin Vac	U/C			
74	Adams Estates	DNW-FlwrMnd	BO 3Q17	83'-151'	\$500-\$899	0	0	0	0	29	0	0	0	0	0	29
285	Arbor Creek (Carrollton)	DNW-Carrlltn	BO 2Q01	50'-74'	\$103-\$217	0	0	0	0	313	0	0	0	0	0	313
325	Arbor Vista North	DNE-Plano	BO 4Q01	90'	\$360-\$700	0	0	0	0	38	0	0	0	0	0	38
112	Arborwood	DNW-FlwrMnd	BO 2Q03	75'-105'	\$228-\$299	0	0	0	0	70	0	0	0	0	0	70
158	Archer Addition	DNW-Lewisvl	BO 4Q20	41'	\$308-\$329	0	0	0	0	38	0	0	0	0	0	38
51	Auburn Farms	DNW-FlwrMnd	BO 4Q16	84'	\$770-\$800	0	0	0	0	16	0	0	0	0	0	16
288	Austin Hills	DNW-Carrlltn	BO 1Q18	50'	\$406-\$506	0	0	0	0	48	0	0	0	0	0	48
295	Austin Waters (Carrollton)	DNW-Carrlltn	Act 2Q07	53'	\$430-\$465	0	0	0	0	216	0	0	0	1	0	217
290	Austin Waters Townhomes	DNW-Carrlltn	BO 1Q21	30'	\$286-\$485	0	0	0	0	97	0	0	0	0	0	97
275	Avondale (Carrollton)	DNW-Carrlltn	BO 3Q16	50'	\$358-\$435	0	0	0	0	65	0	0	0	0	0	65
137	Baker's Branch Estates	DNW-FlwrMnd	BO 1Q02	85'-117'	\$280-\$286	0	0	0	0	117	0	0	0	0	0	117
12	Bella Lago (Flower Mound)	DNW-FlwrMnd	BO 2Q15	150'-152'	\$800-\$1075	0	0	0	0	73	0	0	0	0	0	73
128	Bella Strada	DNW-FlwrMnd	BO 2Q16	43'-70'	\$426-\$562	0	0	0	0	46	0	0	0	0	0	46
152	Bellaire Addition	DNW-Lewisvl	BO 4Q00	65'	\$145-\$161	0	0	0	0	27	0	0	0	0	0	27
163	Belle Creek Village	DNW-FlwrMnd	BO 2Q13	83'	\$384-\$474	0	0	0	0	69	0	0	0	0	0	69
72	Bradford Park (Flower Mound)	DNW-FlwrMnd	Act 1Q19	50'-75'	\$735-\$867	13	43	2	24	92	1	1	38	24	0	156
298	Brentwood Court Townhomes	DNW-Colony	Act 1Q20	24'	\$410-\$439	0	5	0	5	10	0	0	0	33	0	43
41	Bridlewood	DNW-FlwrMnd	BO 3Q08	70'-208'	\$213-\$850	0	0	0	0	1,304	0	0	0	0	0	1,304
49	Brighton Place	DNW-FlwrMnd	BO 1Q21	149'	\$750-\$800	0	0	0	0	3	0	0	0	0	0	3
151	Brittian Estates	DNW-Lewisvl	BO 4Q03	100'	\$450-\$570	0	0	0	0	13	0	0	0	0	0	13
198	Brookside Addition	DNW-Lewisvl	BO 3Q16	50'	\$269-\$339	0	0	0	0	40	0	0	0	0	0	40
139	Brookstone Addition	DNW-FlwrMnd	BO 4Q03	80'	\$240-\$347	0	0	0	0	78	0	0	0	0	0	78
203	Brownstones on West Walters	DNW-Lewisvl	Act 1Q18	20'	\$400-\$450	0	0	0	0	11	0	0	8	0	0	19
106	Bryn Mar Estates	DNW-FlwrMnd	BO 4Q02	90'	\$330-\$366	0	0	0	0	74	0	0	0	0	0	74
284	Camey Place	DNW-Colony	Future	45'	\$0-\$0	0	0	0	0	0	0	0	0	0	80	80
47	Camryn Downs	DNW-DOak	BO 4Q16	100'	\$750-\$800	0	0	0	0	8	0	0	0	0	0	8

Current Activity and Profile Report

Lewisville ISD

Sorted by Subdivision

Map No	Subdivision Name	Sub Area	Status	Lot Size	Price Range	Qtr Starts	Ann Starts	Qtr Clos	Ann Clos	Occ	Inventory			VDL	Future	Total
											Mod	Fin Vac	U/C			
50	Canterbury Row	DNW-FlwrMnd	BO 2Q10	100'	\$450-\$600	0	0	0	0	8	0	0	0	0	0	8
196	Carrington Village	DNW-Lewisvl	BO 2Q14	35'	\$199-\$273	0	0	0	0	183	0	0	0	0	0	183
301	Cascades at the Legends	DNW-Colony	BO 1Q10	50'-55'	\$149-\$194	0	0	0	0	108	0	0	0	0	0	108
303	Cascades at the Legends -	DNW-Colony	BO 1Q10	25'-33'	\$127-\$161	0	0	0	0	184	0	0	0	0	0	184
254	Castle Hills (Lewisville)	DNW-Lewisvl	Act 2Q98	40'-134'	\$435-\$2000	2	21	1	2	3,839	0	18	4	42	0	3,903
266	Castle Hills / Discover Cottages	DNW-Lewisvl	Future	37'	\$0-\$0	0	0	0	0	0	0	0	0	0	57	57
273	Castle Hills / Windhaven	DNW-Lewisvl	Future	37'	\$0-\$0	0	0	0	0	0	0	0	0	87	87	
272	Castle Hills/Carrollton 10	DNW-Carrlltn	Act 4Q20	41'-80'	\$448-\$931	41	213	44	61	61	0	8	145	68	0	282
258	Castle Hills/Chateaux at the	DNW-Lewisvl	BO 2Q18	28'	\$390-\$455	0	0	0	0	19	0	0	0	0	0	19
263	Castle Hills/Northpointe	DNW-Lewisvl	Act 3Q19	41'-65'	\$448-\$831	2	7	0	14	98	5	1	2	161	0	267
268	Castle Hills/Northpointe	DNW-Lewisvl	BO 1Q22	36'	\$420-\$451	0	20	14	49	94	0	0	0	0	0	94
264	Castle Hills/Retreat	DNW-Lewisvl	BO 2Q14	42'	\$380-\$410	0	0	0	0	20	0	0	0	0	0	20
245	Castle Hills/Southwest	DNW-Carrlltn	BO 1Q21	50'	\$377-\$603	0	0	0	0	313	0	0	0	0	0	313
261	Castle Hills/Village Townhomes	DNW-Lewisvl	BO 2Q07	25'	\$425-\$440	0	0	0	0	8	0	0	0	0	0	8
79	Castlewood (Highland Village)	DNW-HighVil	BO 4Q10	68'-120'	\$241-\$510	0	0	0	0	377	0	0	0	0	0	377
130	Cedar Creek Addition (Flower	DNW-FlwrMnd	BO 3Q06	50'	\$160-\$237	0	0	0	0	67	0	0	0	0	0	67
60	Chapel Creek Estates	DNW-CCanyon	BO 2Q00	200'	\$260-\$393	0	0	0	0	4	0	0	0	0	0	4
75	Chapel Hill Addition	DNW-HighVil	BO 4Q08	65'-85'	\$255-\$330	0	0	0	0	224	0	0	0	0	0	224
62	Chapel Springs (Highland	DNW-HighVil	BO 4Q14	65'-80'	\$326-\$500	0	0	0	0	119	0	0	0	0	0	119
310	Charles Ridge	DNW-Carrlltn	Future	24'	\$0-\$0	0	0	0	0	0	0	0	0	0	24	24
176	Chase Oaks Addition	DNW-Lewisvl	BO 1Q14	42'-53'	\$159-\$237	0	0	0	0	130	0	0	0	0	0	130
177	Chase Oaks Addition	DNW-Lewisvl	BO 1Q12	25'	\$174-\$231	0	0	0	0	13	0	0	0	0	0	13
10	Chateau du Lac	DNW-FlwrMnd	Act 3Q00	187'-240'	\$1250-\$3000	1	1	0	1	51	0	0	3	7	0	61
113	Chaucer Estates	DNW-FlwrMnd	BO 1Q00	68'-85'	\$206-\$254	0	0	0	0	170	0	0	0	0	0	170
1	Chimney Rock (Flower Mound)	DNW-FlwrMnd	BO 3Q14	150'	\$759-\$1350	0	0	0	0	49	0	0	0	0	0	49
82	Churchill Crossing	DNW-FlwrMnd	BO 1Q00	70'-100'	\$171-\$230	0	0	0	0	195	0	0	0	0	0	195

Current Activity and Profile Report

Lewisville ISD

Sorted by Subdivision

Map No	Subdivision Name	Sub Area	Status	Lot Size	Price Range	Qtr Starts	Ann Starts	Qtr Clos	Ann Clos	Occ	Inventory			VDL	Future	Total
											Mod	Fin Vac	U/C			
14	CMP Family Addition	DNW-FlwrMnd	BO 2Q20	307'	\$2000-\$4000	0	0	0	0	3	0	0	0	0	0	3
199	Coppell Greens	DNW-Coppell	BO 2Q03	48'-65'	\$184-\$237	0	0	0	0	222	0	0	0	0	0	222
40	Copper Woods	DNW-CCanyon	BO 2Q08	458'	\$420-\$905	0	0	0	0	14	0	0	0	0	0	14
157	Copperas Branch Addition	DNW-HighVil	Act 3Q03	80'	\$300-\$450	0	0	0	0	2	0	0	0	9	0	11
89	Country Meadow Addition	DNW-FlwrMnd	BO 3Q01	50'	\$152-\$197	0	0	0	0	156	0	0	0	0	0	156
230	Coyote Ridge	DNW-Carrltn	BO 3Q06	80'	\$296-\$570	0	0	0	0	358	0	0	0	0	0	358
228	Coyote Ridge/Grandview Ridge	DNW-Carrltn	BO 2Q03	60'	\$273-\$400	0	0	0	0	79	0	0	0	0	0	79
307	Creekside Addn. (Carrollton)	DNW-Carrltn	BO 1Q07	80'	\$400-\$480	0	0	0	0	116	0	0	0	0	0	116
299	Creekside at Austin Waters	DNW-Colony	BO 1Q20	50'-60'	\$427-\$606	0	0	0	0	204	0	0	0	0	0	204
147	Creekside at Heritage Park	DNW-FlwrMnd	BO 1Q22	80'	\$780-\$960	0	2	3	11	136	0	0	0	0	0	136
178	Crescent Estates Addition	DNW-Lewisvl	BO 2Q19	50'	\$355-\$455	0	0	0	0	62	0	0	0	0	0	62
11	Cross Timbers (Dbl Oak)	DNW-DOak	BO 2Q08	150'-165'	\$189-\$330	0	0	0	0	228	0	0	0	0	0	228
171	CT Simmons Addition	DNW-Lewisvl	BO 2Q05	38'	\$105-\$135	0	0	0	0	4	0	0	0	0	0	4
64	Diamond Belle Estates	DNW-FlwrMnd	BO 4Q10	80'	\$400-\$750	0	0	0	0	14	0	0	0	0	0	14
311	Diamond Creek Addition	DNW-Carrltn	BO 2Q19	146'	\$550-\$700	0	0	0	0	6	0	0	0	0	0	6
153	Diamond Hill (Lewisville)	DNW-Lewisvl	BO 2Q00	50'	\$121-\$137	0	0	0	0	151	0	0	0	0	0	151
279	Diamond Ridge	DNW-Carrltn	BO 1Q01	61'	\$107-\$190	0	0	0	0	275	0	0	0	0	0	275
98	District of Highland Village	DNW-HighVil	BO 3Q14	40'	\$282-\$355	0	0	0	0	12	0	0	0	0	0	12
90	Dixon Estates	DNW-FlwrMnd	Future	94'	\$0-\$0	0	0	0	0	0	0	0	0	0	51	51
25	Dominion Estates (Flower)	DNW-FlwrMnd	BO 2Q00	150'	\$455-\$499	0	0	0	0	14	0	0	0	0	0	14
186	Dougherty Addition	DNW-Lewisvl	BO 4Q21	21'	\$300-\$400	0	0	0	2	6	0	0	0	0	0	6
141	Dove Creek (Lewisville)	DNW-Lewisvl	BO 2Q08	132'	\$300-\$600	0	0	0	0	10	0	0	0	0	0	10
138	Edgewood (Flower Mound)	DNW-FlwrMnd	BO 2Q20	65'	\$650-\$685	0	0	0	0	47	0	0	0	0	0	47
21	Emerald Bay	DNW-FlwrMnd	BO 2Q05	180'	\$610-\$650	0	0	0	0	62	0	0	0	0	0	62
140	Emerald Place	DNW-FlwrMnd	Future	80'	\$0-\$0	0	0	0	0	0	0	0	0	0	54	54
280	Essex Park Townhomes	DNW-Carrltn	Act 3Q19	45'	\$512-\$554	0	23	2	38	78	1	0	5	0	0	84

Current Activity and Profile Report

Lewisville ISD

Sorted by Subdivision

Map No	Subdivision Name	Sub Area	Status	Lot Size	Price Range	Qtr Starts	Ann Starts	Qtr Clos	Ann Clos	Occ	Inventory			VDL	Future	Total
											Mod	Fin Vac	U/C			
54	Estancia Estates	DNW-FlwrMnd	BO 4Q19	80'	\$475-\$616	0	0	0	0	53	0	0	0	0	0	53
39	Estates @ Copper Canyon, The	DNW-CCanyon	BO 2Q08	190'	\$750-\$950	0	0	0	0	26	0	0	0	0	0	26
227	Estates at Lake Vista	DNW-Coppell	BO 3Q15	52'	\$327-\$410	0	0	0	0	39	0	0	0	0	0	39
23	Estates of Double Oak	DNW-DOak	BO 2Q04	150'	\$410-\$500	0	0	0	0	46	0	0	0	0	0	46
88	Estates of Flower Mound	DNW-FlwrMnd	BO 1Q02	80'	\$244-\$293	0	0	0	0	64	0	0	0	0	0	64
236	Estates of Indian Creek	DNW-Carrltn	BO 3Q16	50'	\$365-\$424	0	0	0	0	45	0	0	0	0	0	45
17	Estuary Pointe	DNW-FlwrMnd	Future	150'	\$0-\$0	0	0	0	0	0	0	0	0	0	27	27
291	Fairwater	DNE-Frisco	BO 2Q20	65'	\$664-\$685	0	0	0	0	95	0	0	0	0	0	95
143	Fallbrook	DNW-FlwrMnd	BO 1Q04	80'	\$275-\$290	0	0	0	0	77	0	0	0	0	0	77
142	Flower Mound Oaks	DNW-FlwrMnd	BO 1Q15	80'	\$454-\$512	0	0	0	0	56	0	0	0	0	0	56
52	Flower Mound Woods	DNW-FlwrMnd	BO 4Q12	109'	\$442-\$506	0	0	0	0	44	0	0	0	0	0	44
83	Forest Park Estates	DNW-FlwrMnd	BO 2Q00	65'	\$150-\$200	0	0	0	0	106	0	0	0	0	0	106
117	Forest Vista Estates	DNW-FlwrMnd	Act 3Q09	85'	\$550-\$700	0	1	0	0	11	0	0	1	0	0	12
96	Forums Residential, The	DNW-FlwrMnd	BO 4Q08	95'	\$223-\$245	0	0	0	0	71	0	0	0	0	0	71
194	Fox Creek Estates	DNW-Lewisvl	BO 2Q01	63'-70'	\$154-\$195	0	0	0	0	155	0	0	0	0	0	155
122	Foxborough Hollow	DNW-FlwrMnd	BO 2Q00	90'	\$260-\$265	0	0	0	0	72	0	0	0	0	0	72
321	Frisco 45	DNE-Frisco	Future	19'	\$0-\$0	0	0	0	0	0	0	0	0	0	29	29
154	Garden Park Place	DNW-Lewisvl	BO 1Q04	53'	\$132-\$183	0	0	0	0	99	0	0	0	0	0	99
156	Garden Ridge Addition	DNW-Lewisvl	BO 2Q01	40'-50'	\$115-\$120	0	0	0	0	302	0	0	0	0	0	302
259	Garza Lake Estates (The	DNW-Colony	Future	55'	\$0-\$0	0	0	0	0	0	0	0	0	0	4	4
317	Gates of Prestonwood	DNW-Carrltn	Act 4Q02	80'	\$600-\$1000	0	0	0	1	61	0	0	0	1	0	62
44	Grace Park	DNW-FlwrMnd	Future	87'-100'	\$0-\$0	0	0	0	0	0	0	0	0	0	20	20
114	Grand Park Estates	DNW-FlwrMnd	BO 4Q07	80'	\$310-\$406	0	0	0	0	99	0	0	0	0	0	99
165	Great Lakes Crossing	DNW-Lewisvl	Future	50'	\$0-\$0	0	0	0	0	0	0	0	0	0	30	30
173	Greenvalley Addition	DNW-Lewisvl	Future	20'	\$170-\$200	0	0	0	6	6	0	0	0	0	4	10
241	Greenway Park	DNW-Carrltn	BO 2Q03	65'-80'	\$178-\$397	0	0	0	0	392	0	0	0	0	0	392

Current Activity and Profile Report

Lewisville ISD

Sorted by Subdivision

Map No	Subdivision Name	Sub Area	Status	Lot Size	Price Range	Qtr Starts	Ann Starts	Qtr Clos	Ann Clos	Occ	Inventory			VDL	Future	Total
											Mod	Fin Vac	U/C			
287	Hamilton Park	DNW-Carrltn	BO 3Q21	45'	\$422-\$422	0	0	0	4	103	0	0	0	0	0	103
209	Harris Street Townhomes	DNW-Lewisvl	BO 4Q21	30'	\$300-\$300	0	4	0	4	4	0	0	0	0	0	4
116	Hawthorne	DNW-FlwrMnd	BO 2Q16	70'	\$435-\$532	0	0	0	0	52	0	0	0	0	0	52
115	Hearthstone @ Firewheel	DNW-FlwrMnd	BO 3Q05	50'	\$147-\$180	0	0	0	0	47	0	0	0	0	0	47
168	Hedrick Estates	DNW-Lewisvl	BO 1Q01	50'	\$134-\$140	0	0	0	0	118	0	0	0	0	0	118
202	Heritage Hill (Lewisville)	DNW-Lewisvl	BO 2Q07	35'	\$145-\$164	0	0	0	0	80	0	0	0	0	0	80
197	Heritage Square Addition	DNW-Lewisvl	BO 4Q09	35'	\$140-\$180	0	0	0	0	23	0	0	0	0	0	23
172	Heritage Trails Addition	DNW-Lewisvl	Act 1Q21	24'-32'	\$348-\$432	42	134	29	61	61	6	5	102	75	0	249
125	Heritage West	DNW-FlwrMnd	Act 4Q21	70'	\$1000-\$1200	8	8	0	0	0	0	0	8	22	0	30
93	Hickory Springs at Flower	DNW-FlwrMnd	BO 4Q07	94'	\$322-\$382	0	0	0	0	48	0	0	0	0	0	48
34	Hidden Creek Estates (Copper	DNW-CCanyon	Act 2Q08	250'	\$850-\$1000	0	0	0	0	9	0	0	0	6	0	15
237	Hidden Island	DNW-Carrltn	BO 3Q06	65'	\$210-\$280	0	0	0	0	52	0	0	0	0	0	52
8	Hidden Valley Estates	DNW-FlwrMnd	BO 2Q08	100'-224'	\$160-\$550	0	0	0	0	159	0	0	0	0	0	159
2	High Meadow (Flower Mound)	DNW-FlwrMnd	BO 4Q20	120'	\$700-\$963	0	0	0	0	15	0	0	0	0	0	15
78	Highland Court	DNW-FlwrMnd	BO 1Q21	50'-70'	\$471-\$656	0	0	0	0	97	0	0	0	0	0	97
162	Highland Lakes (Lewisville)	DNW-Lewisvl	BO 2Q01	60'-61'	\$200-\$235	0	0	0	0	139	0	0	0	0	0	139
70	Highland Oaks (Highland	DNW-HighVil	Act 1Q09	95'	\$729-\$754	0	1	0	0	39	0	0	1	0	0	40
77	Highland Shores	DNW-HighVil	Act 2Q84	60'-110'	\$235-\$750	0	1	0	0	1,832	0	0	1	4	0	1,837
212	Highland Terraces (Lewisville)	DNW-Lewisvl	BO 4Q21	36'	\$366-\$391	0	1	0	2	32	0	0	0	0	0	32
145	Highlands/The (Lewisville)	DNW-Lewisvl	BO 2Q07	70'-100'	\$95-\$274	0	0	0	0	450	0	0	0	0	0	450
201	Highpoint Oaks Est. Addition	DNW-Lewisvl	BO 4Q18	50'	\$336-\$540	0	0	0	0	86	0	0	0	0	0	86
327	Hills @ Prestonwood V	DNE-Plano	BO 4Q01	75'-90'	\$346-\$545	0	0	0	0	69	0	0	0	0	0	69
330	Hills @ Prestonwood VI/Bluffs,	DNE-Plano	BO 4Q00	50'	\$309-\$370	0	0	0	0	41	0	0	0	0	0	41
319	Hills @ Prestonwood	DNE-Plano	BO 2Q01	75'-90'	\$242-\$401	0	0	0	0	102	0	0	0	0	0	102
316	Hills @ Prestonwood VIII	DNE-Plano	BO 3Q02	50'	\$285-\$550	0	0	0	0	149	0	0	0	0	0	149
238	Hills at Indian Creek	DNW-Carrltn	BO 4Q15	52'-62'	\$315-\$447	0	0	0	0	118	0	0	0	0	0	118

Current Activity and Profile Report

Lewisville ISD

Sorted by Subdivision

Map No	Subdivision Name	Sub Area	Status	Lot Size	Price Range	Qtr Starts	Ann Starts	Qtr Clos	Ann Clos	Occ	Inventory			VDL	Future	Total
											Mod	Fin Vac	U/C			
282	Hills of Kingswood, The	DNE-Frisco	Act 1Q09	65'-150'	\$1460-\$4500	5	46	13	41	262	1	0	42	71	237	613
333	Hills of Preston Creek, The	DNE-Plano	BO 2Q01	75'-100'	\$450-\$470	0	0	0	0	142	0	0	0	0	0	142
217	Hills of Vista Ridge	DNW-Lewisvl	BO 4Q17	50'	\$336-\$421	0	0	0	0	124	0	0	0	0	0	124
5	Hillside of Flower Mound	DNW-FlwrMnd	Act 2Q18	110'	\$700-\$1200	1	4	2	4	7	0	0	2	18	0	27
274	Homestead @ Carrollton	DNW-Carrlltn	BO 2Q08	55'-127'	\$192-\$600	0	0	0	0	459	0	0	0	0	0	459
118	Hunter's Glen (Flower Mound)	DNW-FlwrMnd	BO 4Q18	85'	\$539-\$680	0	0	0	0	70	0	0	0	0	0	70
175	Hunters Glen (Lewisville)	DNW-Lewisvl	BO 3Q00	40'	\$60-\$144	0	0	0	0	277	0	0	0	0	0	277
4	Immel Estates	DNW-FlwrMnd	BO 3Q04	200'-216'	\$549-\$563	0	0	0	0	58	0	0	0	0	0	58
276	Indian Creek Meadows Estates	DNW-Carrlltn	BO 2Q03	50'	\$147-\$190	0	0	0	0	70	0	0	0	0	0	70
232	Indian Creek/Cedar Elm Estates	DNW-Carrlltn	BO 2Q01	65'-80'	\$160-\$229	0	0	0	0	91	0	0	0	0	0	91
231	Indian Creek/Elm Wood Trail	DNW-Carrlltn	BO 4Q01	65'-73'	\$173-\$229	0	0	0	0	271	0	0	0	0	0	271
235	Indian Creek/Indian Pointe	DNW-Carrlltn	BO 4Q02	65'	\$188-\$243	0	0	0	0	192	0	0	0	0	0	192
229	Indian Creek/Oakwood Springs	DNW-Carrlltn	BO 2Q01	65'	\$168-\$197	0	0	0	0	280	0	0	0	0	0	280
214	Kathryn Commons Addn	DNW-Lewisvl	BO 2Q12	17'	\$140-\$180	0	0	0	0	5	0	0	0	0	0	5
16	Kensington Park Estates	DNW-FlwrMnd	BO 4Q01	290'	\$900-\$950	0	0	0	0	5	0	0	0	0	0	5
305	Kensington Place	DNW-Carrlltn	Act 4Q21	50'-70'	\$500-\$800	1	1	0	0	0	0	0	1	95	0	96
324	Kings Gate (Plano)	DNE-Plano	Act 1Q96	162'	\$1900-\$6500	0	2	0	0	43	0	0	3	2	0	48
255	Kings Grant Addition	DNW-Lewisvl	BO 1Q15	53'-55'	\$399-\$409	0	0	0	0	85	0	0	0	0	0	85
314	Kings Ridge Addition	DNE-Plano	BO 2Q17	50'-90'	\$269-\$1380	0	0	0	0	577	0	0	0	0	0	577
61	Ladera Highland Village	DNW-HighVil	BO 3Q21	42'	\$358-\$469	0	4	0	14	102	0	0	0	0	0	102
76	Lake Forest Estates	DNW-FlwrMnd	BO 1Q02	75'-77'	\$230-\$276	0	0	0	0	334	0	0	0	0	0	334
7	Lake Hill Estates	DNW-FlwrMnd	BO 2Q01	145'	\$300-\$305	0	0	0	0	58	0	0	0	0	0	58
97	Lakemont Addition	DNW-FlwrMnd	BO 3Q05	95'	\$289-\$315	0	0	0	0	76	0	0	0	0	0	76
247	Lakeridge Townhomes	DNW-Lewisvl	Act 2Q06	22'	\$256-\$270	0	0	0	0	131	0	0	0	1	0	132
313	Lakes Legacy/Heritage Lakes	DNE-Frisco	BO 2Q07	50'-70'	\$212-\$412	0	0	0	0	590	0	0	0	0	0	590
328	Lakes Legacy/Lakehill	DNE-Frisco	BO 3Q03	65'-78'	\$284-\$423	0	0	0	0	261	0	0	0	0	0	261

Current Activity and Profile Report

Lewisville ISD

Sorted by Subdivision

Map No	Subdivision Name	Sub Area	Status	Lot Size	Price Range	Qtr Starts	Ann Starts	Qtr Clos	Ann Clos	Occ	Inventory			VDL	Future	Total
											Mod	Fin Vac	U/C			
326	Lakes Legacy/The Lakes	DNE-Frisco	BO 1Q12	77'	\$525-\$1250	0	0	0	0	140	0	0	0	0	0	140
323	Lakes Legacy/The Villas	DNE-Frisco	BO 4Q15	55'	\$269-\$725	0	0	0	0	102	0	0	0	0	0	102
103	Lakeside Center Townhomes	DNW-FlwrMnd	Act 3Q21	27'	\$500-\$600	0	8	0	0	0	0	0	8	0	0	8
169	Lakeside Crossing	DNW-Lewisvl	Future	25'	\$0-\$0	0	0	0	0	0	0	0	0	201	201	
104	Lakeside Crossing Townhomes	DNW-FlwrMnd	Act 3Q20	32'	\$660-\$765	0	4	0	5	5	0	0	4	6	0	15
85	Lakeside DFW (Flower Mound)	DNW-FlwrMnd	BO 4Q17	30'-65'	\$382-\$976	0	0	0	0	254	0	0	0	0	0	254
91	Lakeside Tower	DNW-FlwrMnd	Act 2Q19		\$1152-\$3854	0	0	0	7	44	0	4	0	0	0	48
101	Lakeside Village	DNW-FlwrMnd	Act 4Q21	40'	\$1000-\$1250	0	0	0	0	0	0	0	0	57	0	57
95	Lakeside Villas	DNW-FlwrMnd	Act 1Q22	35'	\$650-\$750	0	0	0	0	0	0	0	0	7	0	7
124	Lakewood (Flower Mound)	DNW-FlwrMnd	Future	31'-50'	\$0-\$0	0	0	0	0	0	0	0	0	0	164	164
87	Lakewood Addition (Highland	DNW-HighVil	BO 1Q00	150'	\$270-\$350	0	0	0	0	17	0	0	0	0	0	17
277	Lakewood Hills Addition	DNW-Lewisvl	Act 4Q17	50'-80'	\$400-\$679	18	89	10	25	257	3	0	75	186	0	521
9	Landing @ Northshore, The	DNW-FlwrMnd	BO 4Q18	240'-283'	\$920-\$2800	0	0	0	0	49	0	0	0	0	0	49
193	Larry Ho Addition	DNW-Lewisvl	Future	21'	\$0-\$0	0	0	0	0	0	0	0	0	0	4	4
296	Legends, The (Colony)	DNW-Colony	BO 4Q06	40'-80'	\$136-\$252	0	0	0	0	1,758	0	0	0	0	0	1,758
59	Legends, The (Flower Mound)	DNW-FlwrMnd	Act 1Q15	50'	\$418-\$445	0	0	0	0	90	0	0	0	1	0	91
144	Lexington Glen	DNW-FlwrMnd	BO 2Q06	40'	\$149-\$179	0	0	0	0	90	0	0	0	0	0	90
26	Liberty Park	DNW-FlwrMnd	BO 4Q21	70'	\$600-\$900	0	0	0	1	9	0	0	0	0	0	9
100	LISD Spinks Road	DNW-FlwrMnd	Future	80'	\$0-\$0	0	0	0	0	0	0	0	0	0	132	132
223	MacArthur & 121	DNW-Lewisvl	Future	25'	\$0-\$0	0	0	0	0	0	0	0	0	0	18	18
131	Magnolia Court	DNW-FlwrMnd	BO 4Q21	80'	\$623-\$725	0	13	0	28	29	0	0	0	0	0	29
31	Magnolia Park (Flower Mound)	DNW-FlwrMnd	BO 4Q18	85'	\$693-\$800	0	0	0	0	26	0	0	0	0	0	26
213	Main Street Village	DNW-Lewisvl	BO 1Q08	22'	\$139-\$158	0	0	0	0	141	0	0	0	0	0	141
134	Mallard Cove Estates	DNW-FlwrMnd	BO 3Q08	84'	\$210-\$320	0	0	0	0	3	0	0	0	0	0	3
211	Manors at Forestbrook Addition	DNW-Lewisvl	Act 4Q18	26'	\$335-\$390	1	25	0	24	38	4	0	23	46	0	111
224	Manors at Vista Ridge I	DNW-Lewisvl	BO 1Q19	28'	\$320-\$360	0	0	0	0	72	0	0	0	0	0	72

Current Activity and Profile Report

Lewisville ISD

Sorted by Subdivision

Map No	Subdivision Name	Sub Area	Status	Lot Size	Price Range	Qtr Starts	Ann Starts	Qtr Clos	Ann Clos	Occ	Inventory			VDL	Future	Total
											Mod	Fin Vac	U/C			
161	Meadow Lake	DNW-Lewisvl	BO 4Q01	65'	\$100-\$160	0	0	0	0	434	0	0	0	0	0	434
257	Meridian (Lewisville)	DNW-Lewisvl	BO 1Q10	53'-80'	\$201-\$391	0	0	0	0	390	0	0	0	0	0	390
184	Midway Park Addition	DNW-Lewisvl	BO 3Q05	50'	\$80-\$100	0	0	0	0	6	0	0	0	0	0	6
191	Milton Street Townhomes	DNW-Lewisvl	BO 2Q08	25'	\$140-\$210	0	0	0	0	3	0	0	0	0	0	3
262	Moore Farm	DNW-Carrlltn	BO 1Q08	50'-70'	\$202-\$650	0	0	0	0	385	0	0	0	0	0	385
292	Mustang Park	DNW-Carrlltn	BO 2Q18	50'-80'	\$340-\$632	0	0	0	0	389	0	0	0	0	0	389
302	Mustang Park Townhomes	DNW-Carrlltn	BO 4Q18	22'-35'	\$302-\$380	0	0	0	0	177	0	0	0	0	0	177
297	Mustang Park/Latera	DNW-Carrlltn	BO 4Q20	45'	\$382-\$422	0	0	0	0	55	0	0	0	0	0	55
233	Myers Ridge	DNW-Lewisvl	Future	40'-50'	\$0-\$0	0	0	0	0	0	0	0	0	0	318	318
331	Normandy Estates	DNE-Plano	Act 4Q08	59'-110'	\$1250-\$2680	2	8	0	8	115	0	0	10	1	0	126
322	Normandy Estates Townhomes	DNE-Plano	BO 4Q16	40'	\$430-\$470	0	0	0	0	3	0	0	0	0	0	3
179	Normandy Village	DNW-Lewisvl	Act 4Q19	25'	\$449-\$479	0	17	0	5	16	1	0	24	41	0	82
189	North Shore Villas	DNW-Lewisvl	BO 3Q13	50'-52'	\$144-\$195	0	0	0	0	15	0	0	0	0	0	15
183	Oak Creek Estates (Lewisville)	DNW-Lewisvl	BO 2Q01	100'	\$150-\$155	0	0	0	0	61	0	0	0	0	0	61
136	Oak Park Addn (Flwr Mnd)	DNW-FlwrMnd	BO 2Q00	60'	\$135-\$165	0	0	0	0	113	0	0	0	0	0	113
219	Oakbend Estates (Lewisville)	DNW-Lewisvl	Act 1Q21	30'	\$450-\$550	0	9	0	5	5	0	0	9	13	0	27
105	Oakbridge at Flower Mound	DNW-FlwrMnd	Act 3Q17	90'	\$916-\$959	1	15	5	27	89	0	0	6	0	0	95
159	Oaks of Bellaire	DNW-Lewisvl	BO 1Q01	70'-75'	\$117-\$178	0	0	0	0	95	0	0	0	0	0	95
123	Oaks of Highland Village	DNW-HighVil	BO 2Q00	80'	\$200-\$250	0	0	0	0	64	0	0	0	0	0	64
192	Oaks of the Southwest	DNW-Lewisvl	BO 4Q04	25'	\$160-\$175	0	0	0	0	54	0	0	0	0	0	54
126	One Place	DNW-FlwrMnd	BO 2Q00	40'	\$93-\$110	0	0	0	0	63	0	0	0	0	0	63
164	Orchard Flower	DNW-FlwrMnd	BO 3Q21	50'-60'	\$433-\$587	0	1	0	19	98	0	0	0	0	0	98
170	Orchard Valley Estates	DNW-Lewisvl	BO 4Q00	50'-55'	\$158-\$160	0	0	0	0	379	0	0	0	0	0	379
206	Park Central Terraces	DNW-Lewisvl	Act 2Q20	35'	\$352-\$367	0	24	1	10	10	0	0	20	1	0	31
278	Parker Crossing	DNW-Carrlltn	Future	41'	\$0-\$0	0	0	0	0	0	0	0	0	0	61	61
306	Parker Estates (Plano)	DNE-Plano	BO 3Q06	25'-35'	\$140-\$205	0	0	0	0	419	0	0	0	0	0	419

Current Activity and Profile Report

Lewisville ISD

Sorted by Subdivision

Map No	Subdivision Name	Sub Area	Status	Lot Size	Price Range	Qtr Starts	Ann Starts	Qtr Clos	Ann Clos	Occ	Inventory			VDL	Future	Total
											Mod	Fin Vac	U/C			
252	Parker Place (Lewisville)	DNW-Lewisvl	Act 4Q21	40'	\$500-\$600	2	2	0	0	0	0	0	2	128	0	130
320	Parks at Austin Ranch	DNW-Colony	BO 1Q07	25'	\$250-\$255	0	0	0	0	8	0	0	0	0	0	8
86	Parkside at Woodlake	DNW-FlwrMnd	BO 2Q18	50'	\$455-\$515	0	0	0	0	45	0	0	0	0	0	45
146	Pebble Ridge Estates	DNW-Lewisvl	BO 3Q02	60'	\$171-\$183	0	0	0	0	87	0	0	0	0	0	87
67	Pecan Meadows Addition	DNW-FlwrMnd	BO 4Q01	106'	\$272-\$315	0	0	0	0	68	0	0	0	0	0	68
28	Peninsula @ Twin Cove, The	DNW-FlwrMnd	BO 1Q01	120'-200'	\$250-\$570	0	0	0	0	93	0	0	0	0	0	93
19	Point Noble	DNW-FlwrMnd	BO 2Q10	156'	\$899-\$1600	0	0	0	0	52	0	0	0	0	0	52
80	Preserve at Flower Mound	DNW-FlwrMnd	BO 2Q18	81'	\$574-\$765	0	0	0	0	84	0	0	0	0	0	84
207	Preserve at Vista Ridge	DNW-Lewisvl	BO 3Q15	28'	\$269-\$270	0	0	0	0	27	0	0	0	0	0	27
15	Prince Estates	DNW-FlwrMnd	BO 4Q01	147'	\$450-\$1000	0	0	0	0	3	0	0	0	0	0	3
270	Quail Creek North	DNW-Carrlltn	BO 4Q13	25'-35'	\$196-\$310	0	0	0	0	147	0	0	0	0	0	147
269	Quail Creek North Townhomes	DNW-Carrlltn	BO 2Q11	25'	\$176-\$182	0	0	0	0	66	0	0	0	0	0	66
271	Quail Creek Townhomes	DNW-Carrlltn	BO 3Q06	25'-35'	\$184-\$226	0	0	0	0	165	0	0	0	0	0	165
46	Red Hawk Addition	DNW-FlwrMnd	Future	40'	\$0-\$0	0	0	0	0	0	0	0	0	0	4	4
43	Regency Park Addition (Flower	DNW-FlwrMnd	BO 2Q18	110'-118'	\$469-\$875	0	0	0	0	56	0	0	0	0	0	56
65	Reserve at Chapel Hill	DNW-HighVil	Act 2Q21	65'-102'	\$787-\$882	16	48	6	7	7	1	0	40	25	0	73
127	Reserve at Creekside	DNW-FlwrMnd	BO 4Q02	100'	\$430-\$449	0	0	0	0	38	0	0	0	0	0	38
174	Reserve at Timber Creek, The	DNW-Lewisvl	BO 3Q03	75'	\$220-\$227	0	0	0	0	166	0	0	0	0	0	166
289	Reserve on Parker (Carrollton)	DNW-Carrlltn	BO 2Q20	45'	\$407-\$414	0	0	0	0	106	0	0	0	0	0	106
286	Reserve on Parker Townhomes	DNW-Carrlltn	BO 2Q20	25'	\$331-\$360	0	0	0	0	63	0	0	0	0	0	63
242	Ridge at Indian Creek	DNW-Carrlltn	BO 4Q20	50'	\$420-\$504	0	0	0	0	64	0	0	0	0	0	64
267	Ridgepointe	DNW-Colony	BO 4Q03	50'-70'	\$110-\$281	0	0	0	0	563	0	0	0	0	0	563
155	Ridgeview Estates (Lewisville)	DNW-Lewisvl	BO 4Q05	61'	\$175-\$241	0	0	0	0	77	0	0	0	0	0	77
13	River Oaks Estates	DNW-FlwrMnd	BO 4Q06	150'	\$690-\$730	0	0	0	0	131	0	0	0	0	0	131
108	River Walk/Central Park Villas	DNW-FlwrMnd	Act 2Q15	40'	\$644-\$669	7	14	1	13	74	1	0	21	1	0	97
102	River Walk/Lakeshore Terrace	DNW-FlwrMnd	Act 1Q18	22'-40'	\$489-\$650	0	9	0	0	20	1	0	14	64	0	99

Current Activity and Profile Report

Lewisville ISD

Sorted by Subdivision

Map No	Subdivision Name	Sub Area	Status	Lot Size	Price Range	Qtr Starts	Ann Starts	Qtr Clos	Ann Clos	Occ	Inventory			VDL	Future	Total
											Mod	Fin Vac	U/C			
99	River Walk/Parkmont Place	DNW-FlwrMnd	BO 4Q20	30'	\$403-\$471	0	0	0	0	52	0	0	0	0	0	52
109	River Walk/Pinnacle	DNW-FlwrMnd	BO 2Q21	25'	\$329-\$339	0	0	0	3	55	0	0	0	0	0	55
107	River Walk/Riverside Point	DNW-FlwrMnd	BO 4Q20	25'	\$383-\$386	0	0	0	0	72	0	0	0	0	0	72
293	Rock Creek Townhomes	DNE-Frisco	Future	25'	\$0-\$0	0	0	0	0	0	0	0	0	0	92	92
221	Rockbrook Place Addition	DNW-Lewisvl	BO 2Q13	26'	\$180-\$186	0	0	0	0	153	0	0	0	0	0	153
37	Rockhaven Estates	DNW-FlwrMnd	BO 4Q21	150'	\$700-\$1200	0	0	0	1	11	0	0	0	0	0	11
69	Rolling Hills Estates (Highland	DNW-HighVil	BO 2Q06	65'	\$221-\$370	0	0	0	0	163	0	0	0	0	0	163
121	Rosalie Estates	DNW-HighVil	BO 4Q00	130'	\$150-\$279	0	0	0	0	5	0	0	0	0	0	5
29	Saddle Oaks Addition	DNW-FlwrMnd	BO 2Q07	150'	\$570-\$600	0	0	0	0	45	0	0	0	0	0	45
281	Saddle Ridge (Carrollton)	DNW-Carrltn	BO 2Q21	45'	\$400-\$443	0	0	0	3	86	0	0	0	0	0	86
27	Saddlewood (Flower Mound)	DNW-FlwrMnd	Act 4Q15	120'	\$989-\$1046	1	4	0	4	45	0	0	2	2	0	49
149	Samuel Place	DNW-Lewisvl	BO 2Q07	65'	\$175-\$220	0	0	0	0	27	0	0	0	0	0	27
63	Sanctuary at Flower Mound	DNW-FlwrMnd	BO 3Q08	100'	\$449-\$598	0	0	0	0	89	0	0	0	0	0	89
3	Serenity (Flower Mound)	DNW-FlwrMnd	Future	80'	\$0-\$0	0	0	0	0	0	0	0	0	0	18	18
222	Settler's Village Townhomes	DNW-Lewisvl	BO 1Q15	20'	\$209-\$217	0	0	0	0	228	0	0	0	0	0	228
6	Shiloh Ranch Estates	DNW-FlwrMnd	BO 2Q03	280'	\$173-\$178	0	0	0	0	33	0	0	0	0	0	33
329	Shoal Creek	DNE-Plano	BO 2Q10	50'-100'	\$268-\$2000	0	0	0	0	312	0	0	0	0	0	312
309	Shops at Prestonwood, The	DNW-Carrltn	BO 2Q19	22'-28'	\$269-\$560	0	0	0	0	188	0	0	0	0	0	188
22	Simple Oaks Estates	DNW-DOak	BO 2Q17	176'	\$200-\$500	0	0	0	0	3	0	0	0	0	0	3
260	Sojourn at the Realm Condos	DNW-Lewisvl	BO 1Q22		\$299-\$407	0	0	2	61	80	0	0	0	0	0	80
200	South Village Addition	DNW-Lewisvl	Act 4Q17	24'-44'	\$329-\$380	0	3	0	29	56	0	0	1	6	0	63
187	Southridge Addition (Lewisville)	DNW-Lewisvl	BO 2Q00	60'-61'	\$146-\$189	0	0	0	0	187	0	0	0	0	0	187
215	Sparkman Estates	DNW-Lewisvl	BO 2Q08	30'	\$235-\$240	0	0	0	0	2	0	0	0	0	0	2
71	St. James Place	DNW-HighVil	Act 3Q09	65'	\$255-\$330	0	2	1	1	11	0	0	2	0	0	13
56	Stafford Estates	DNW-FlwrMnd	BO 2Q00	75'-85'	\$226-\$311	0	0	0	0	248	0	0	0	0	0	248
250	Stewart Peninsula/Cottonwood	DNW-Colony	BO 1Q04	55'	\$142-\$280	0	0	0	0	246	0	0	0	0	0	246

Current Activity and Profile Report

Lewisville ISD

Sorted by Subdivision

Map No	Subdivision Name	Sub Area	Status	Lot Size	Price Range	Qtr Starts	Ann Starts	Qtr Clos	Ann Clos	Occ	Inventory			VDL	Future	Total
											Mod	Fin Vac	U/C			
248	Stewart Peninsula/Cypress	DNW-Colony	BO 4Q09	50'-60'	\$285-\$423	0	0	0	0	172	0	0	0	0	0	172
251	Stewart Peninsula/Heights, The	DNW-Colony	BO 3Q03	55'-65'	\$163-\$209	0	0	0	0	120	0	0	0	0	0	120
249	Stewart Peninsula/Northshore	DNW-Colony	BO 2Q10	55'-85'	\$400-\$769	0	0	0	0	94	0	0	0	0	0	94
253	Stewart Peninsula/The Cedars	DNW-Colony	BO 4Q02	55'-62'	\$143-\$189	0	0	0	0	43	0	0	0	0	0	43
120	Stone Hill Farm	DNW-FlwrMnd	BO 3Q02	70'-84'	\$181-\$247	0	0	0	0	553	0	0	0	0	0	553
335	Stonebriar	DNE-Frisco	BO 1Q11	50'-110'	\$250-\$2700	0	0	0	0	624	0	0	0	0	0	624
318	Stonebriar Country Club Est.	DNE-Frisco	Act 2Q01	90'	\$849-\$1900	0	0	0	0	91	0	0	0	4	0	95
133	Suncrest @ Flower Mound	DNW-FlwrMnd	BO 4Q13	55'-80'	\$240-\$398	0	0	0	0	102	0	0	0	0	0	102
35	Sunset Point at Twin Coves	DNW-FlwrMnd	Act 4Q21	80'	\$1100-\$1300	2	2	0	0	0	0	0	2	16	0	18
94	Surrey Lane Addition	DNW-FlwrMnd	BO 4Q16	90'	\$700-\$800	0	0	0	0	3	0	0	0	0	0	3
119	Tequesta	DNW-HighVil	Act 2Q20	60'	\$499-\$556	1	3	1	6	9	0	0	2	0	0	11
55	Terracina (Flower Mound)	DNW-FlwrMnd	Act 3Q12	100'	\$695-\$771	0	0	0	14	166	0	0	1	1	0	168
334	The Corvalla at Stonebriar	DNE-Frisco	Act 1Q18		\$525-\$2000	0	0	0	6	67	0	2	0	0	52	121
68	Three Bridges Estates	DNW-FlwrMnd	Act 2Q05	258'	\$800-\$1000	0	0	0	0	14	0	0	0	2	0	16
185	Timber Creek Park Estates	DNW-Lewisvl	BO 4Q01	61'	\$112-\$160	0	0	0	0	63	0	0	0	0	0	63
205	Timber Creek Willows	DNW-Lewisvl	Future	25'	\$0-\$0	0	0	0	0	0	0	0	0	0	31	31
195	Timber Hill Addition	DNW-Lewisvl	BO 3Q00	53'	\$135-\$185	0	0	0	0	84	0	0	0	0	0	84
188	Timber Valley Estates	DNW-Lewisvl	BO 2Q00	40'-67'	\$90-\$128	0	0	0	0	100	0	0	0	0	0	100
160	Tinley Park	DNW-FlwrMnd	Act 2Q20	50'-100'	\$635-\$635	1	17	2	27	28	0	0	7	0	0	35
24	Town Lake at Flower Mound	DNW-FlwrMnd	Act 1Q17	100'-120'	\$1417-\$1532	3	26	9	27	104	1	1	23	32	0	161
92	Towne View Estates	DNW-FlwrMnd	BO 2Q02	80'-97'	\$260-\$322	0	0	0	0	144	0	0	0	0	0	144
204	Townhomes @ Continental	DNW-Lewisvl	BO 4Q17	24'	\$158-\$220	0	0	0	0	90	0	0	0	0	0	90
218	Townhomes of Vista Ridge	DNW-Lewisvl	BO 2Q10	25'	\$179-\$189	0	0	0	0	37	0	0	0	0	0	37
66	Traditions of Flower Mound	DNW-FlwrMnd	Future	107'	\$0-\$0	0	0	0	0	0	0	0	0	0	9	9
294	Trails at Arbor Hill	DNW-Carrltn	BO 4Q20	50'	\$394-\$595	0	0	0	0	68	0	0	0	0	0	68
216	Trinity Townhomes (Lewisville)	DNW-Lewisvl	Future	17'	\$0-\$0	0	0	0	0	0	0	0	0	0	8	8

Current Activity and Profile Report

Lewisville ISD

Sorted by Subdivision

Map No	Subdivision Name	Sub Area	Status	Lot Size	Price Range	Qtr Starts	Ann Starts	Qtr Clos	Ann Clos	Occ	Inventory			VDL	Future	Total
											Mod	Fin Vac	U/C			
30	Twin Lakes Estates	DNW-DOak	BO 3Q03	100'	\$400-\$500	0	0	0	0	70	0	0	0	0	0	70
208	Uptown Village	DNW-Lewisvl	BO 3Q21	23'	\$295-\$330	0	0	0	5	70	0	0	0	0	0	70
182	Valley View Addition	DNW-Lewisvl	BO 2Q01	65'	\$94-\$175	0	0	0	0	92	0	0	0	0	0	92
180	Valley Vista Estates	DNW-Lewisvl	BO 2Q00	66'-100'	\$118-\$225	0	0	0	0	618	0	0	0	0	0	618
332	Vassar Court	DNW-Colony	Future	30'	\$0-\$0	0	0	0	0	0	0	0	0	0	22	22
166	Verona Addition (Lewisville)	DNW-Lewisvl	BO 4Q17	50'	\$306-\$348	0	0	0	0	138	0	0	0	0	0	138
32	Vickery	DNW-CCanyon	Act 1Q21	62'-100'	\$740-\$1361	22	63	1	1	1	3	0	59	112	50	225
53	Vilamoura	DNW-FlwrMnd	BO 4Q17	72'	\$600-\$800	0	0	0	0	28	0	0	0	0	0	28
167	Village at Lewisville	DNW-Lewisvl	Future	20'	\$0-\$0	0	0	0	0	0	0	0	0	0	202	202
312	Village at Prestonwood	DNE-Plano	BO 2Q11	40'-50'	\$200-\$241	0	0	0	0	132	0	0	0	0	0	132
283	Village at the Pointe	DNW-Colony	BO 3Q20	26'	\$360-\$360	0	0	0	0	77	0	0	0	0	0	77
300	Village Townhomes	DNW-Colony	Future	30'	\$0-\$0	0	0	0	0	0	0	0	0	0	74	74
239	Villages of Indian Creek	DNW-Carrltn	BO 1Q03	40'-50'	\$130-\$165	0	0	0	0	563	0	0	0	0	0	563
84	Villages of Northshore, The	DNW-FlwrMnd	BO 3Q00	68'-94'	\$232-\$260	0	0	0	0	330	0	0	0	0	0	330
240	Villas at Indian Creek	DNW-Carrltn	BO 4Q13	40'	\$250-\$289	0	0	0	0	33	0	0	0	0	0	33
225	Villas at Lake Vista Townhomes	DNW-Coppell	BO 2Q14	30'	\$260-\$333	0	0	0	0	93	0	0	0	0	0	93
304	Villas at Parker	DNW-Carrltn	BO 4Q20	45'	\$379-\$400	0	0	0	0	100	0	0	0	0	0	100
129	Villas at Southgate (Flower	DNW-FlwrMnd	Act 3Q18	30'	\$510-\$549	11	32	8	33	123	1	0	19	3	0	146
132	Villas at Southgate Townhomes	DNW-FlwrMnd	Act 3Q18	22'	\$377-\$570	13	51	5	43	135	1	0	41	47	0	224
243	Villas of Indian Creek	DNW-Carrltn	BO 1Q11	60'-80'	\$234-\$489	0	0	0	0	353	0	0	0	0	0	353
234	Villas of Indian Creek TH'S	DNW-Carrltn	BO 1Q15	22'	\$227-\$256	0	0	0	0	204	0	0	0	0	0	204
315	Villas of Prestonwood	DNW-Carrltn	Act 1Q17	28'	\$451-\$520	0	66	10	64	149	0	16	11	18	0	194
190	Villas of Royal Gardens	DNW-Lewisvl	Future	26'	\$0-\$0	0	0	0	0	0	0	0	0	0	104	104
226	Vista del Lago Addition	DNW-Lewisvl	Act 3Q19	22'	\$417-\$476	16	46	0	27	75	1	0	42	30	0	148
220	Vista Ridge Brownstones	DNW-Lewisvl	BO 2Q17	24'	\$215-\$260	0	0	0	0	105	0	0	0	0	0	105
181	Vista Villas Addition	DNW-Lewisvl	BO 3Q20	50'	\$326-\$393	0	0	0	0	46	0	0	0	0	0	46

Current Activity and Profile Report

Lewisville ISD

Sorted by Subdivision

Map No	Subdivision Name	Sub Area	Status	Lot Size	Price Range	Qtr Starts	Ann Starts	Qtr Clos	Ann Clos	Occ	Inventory			VDL	Future	Total
											Mod	Fin Vac	U/C			
73	Walnut Grove Addition	DNW-FlwrMnd	BO 4Q08	46'	\$290-\$300	0	0	0	0	13	0	0	0	0	0	13
308	Warmington Meadows	DNW-Carrltn	BO 2Q14	80'	\$386-\$709	0	0	0	0	68	0	0	0	0	0	68
110	Waterford Park Estates (Flower	DNW-FlwrMnd	BO 3Q15	70'-114'	\$299-\$445	0	0	0	0	191	0	0	0	0	0	191
256	Waters Edge, The	DNW-Colony	BO 4Q09	60'	\$475-\$900	0	0	0	0	15	0	0	0	0	0	15
45	Wellington Manor (Flower	DNW-FlwrMnd	BO 2Q14	80'	\$469-\$554	0	0	0	0	31	0	0	0	0	0	31
36	Wellington/Brandywine @	DNW-FlwrMnd	BO 4Q04	95'	\$395-\$439	0	0	0	0	39	0	0	0	0	0	39
38	Wellington/Estates, The	DNW-FlwrMnd	BO 3Q07	50'-71'	\$228-\$364	0	0	0	0	759	0	0	0	0	0	759
42	Wellington/Hillcrest	DNW-FlwrMnd	BO 1Q04	75'-106'	\$340-\$374	0	0	0	0	260	0	0	0	0	0	260
57	Wellington/Wetherstone	DNW-FlwrMnd	BO 2Q04	50'-70'	\$134-\$335	0	0	0	0	976	0	0	0	0	0	976
148	Wentworth Villas Estates	DNW-Lewisvl	BO 2Q10	40'	\$185-\$205	0	0	0	0	60	0	0	0	0	0	60
18	West Oaks	DNW-DOak	BO 2Q17	160'	\$400-\$3000	0	0	0	0	16	0	0	0	0	0	16
265	Westport Lakeview Villas	DNW-Colony	Act 1Q19	25'	\$970-\$980	7	15	4	10	19	0	0	11	3	0	33
111	Whisper Creek	DNW-FlwrMnd	BO 2Q16	93'	\$615-\$830	0	0	0	0	31	0	0	0	0	0	31
150	Whispering Oaks (Lewisville)	DNW-Lewisvl	BO 4Q00	50'-70'	\$102-\$172	0	0	0	0	209	0	0	0	0	0	209
81	Whyburn	DNW-FlwrMnd	Future	80'	\$0-\$0	0	0	0	0	0	0	0	0	0	105	105
33	Wichita Chase	DNW-FlwrMnd	BO 2Q06	90'-140'	\$356-\$465	0	0	0	0	297	0	0	0	0	0	297
20	Wichita Creek Estates	DNW-FlwrMnd	BO 2Q01	160'-165'	\$460-\$650	0	0	0	0	105	0	0	0	0	0	105
135	Wichita Estates	DNW-HighVil	Act 1Q16	80'	\$535-\$637	0	1	0	0	37	0	0	1	1	0	39
210	Willowbrook Addition	DNW-Lewisvl	BO 2Q19	50'	\$368-\$446	0	0	0	0	75	0	0	0	0	0	75
246	Windhaven Crossing	DNW-Lewisvl	Act 1Q17	22'	\$330-\$435	22	35	0	25	260	1	0	28	74	0	363
58	Woods @ Wellington, The	DNW-FlwrMnd	BO 4Q02	80'	\$340-\$380	0	0	0	0	70	0	0	0	0	0	70
48	Wright Estates	DNW-FlwrMnd	BO 3Q08	223'	\$559-\$590	0	0	0	0	16	0	0	0	0	0	16
244	Wyndale Meadows Addition	DNW-Lewisvl	BO 3Q20	50'-65'	\$383-\$505	0	0	0	0	231	0	0	0	0	0	231
Selection Totals						262	1194	176	918	43,160	33	56	874	1,568	2,373	48,064

Quarterly Activity & Inventory Report

Lewisville ISD Sorted By Subdivision

Subdivision Name (Map No)	Sub Area	Status	1Q20	2Q20	3Q20	4Q20	1Q21	2Q21	3Q21	4Q21	1Q22	Ann. Rates/ *Inv. Supply	
Adams Estates (74) \$500-\$899 83'-151'	DNW-FlwrMnd BO 3Q17	Starts	0	0	0	0	0	0	0	0	0	0	
		Closings	0	0	0	0	0	0	0	0	0	0	
		Housing Inv	0	0	0	0	0	0	0	0	0	0	0.0
		VDL Inv	0	0	0	0	0	0	0	0	0	0	0.0
Arbor Creek (Carroll (285)) \$103-\$217 50'-74'	DNW-Carrltn BO 2Q01	Starts	0	0	0	0	0	0	0	0	0	0	
		Closings	0	0	0	0	0	0	0	0	0	0	
		Housing Inv	0	0	0	0	0	0	0	0	0	0	0.0
		VDL Inv	0	0	0	0	0	0	0	0	0	0	0.0
Arbor Vista North (325) \$360-\$700 90'	DNE-Plano BO 4Q01	Starts	0	0	0	0	0	0	0	0	0	0	
		Closings	0	0	0	0	0	0	0	0	0	0	
		Housing Inv	0	0	0	0	0	0	0	0	0	0	0.0
		VDL Inv	0	0	0	0	0	0	0	0	0	0	0.0
Arborwood (112) \$228-\$299 75'-105'	DNW-FlwrMnd BO 2Q03	Starts	0	0	0	0	0	0	0	0	0	0	
		Closings	0	0	0	0	0	0	0	0	0	0	
		Housing Inv	0	0	0	0	0	0	0	0	0	0	0.0
		VDL Inv	0	0	0	0	0	0	0	0	0	0	0.0
Archer Addition (158) \$308-\$329 41'	DNW-Lewisvl BO 4Q20	Starts	3	3	0	0	0	0	0	0	0	0	
		Closings	7	3	0	5	0	0	0	0	0	0	
		Housing Inv	5	5	5	0	0	0	0	0	0	0	0.0
		VDL Inv	3	0	0	0	0	0	0	0	0	0	0.0
Auburn Farms (51) \$770-\$800 84'	DNW-FlwrMnd BO 4Q16	Starts	0	0	0	0	0	0	0	0	0	0	
		Closings	0	0	0	0	0	0	0	0	0	0	
		Housing Inv	0	0	0	0	0	0	0	0	0	0	0.0
		VDL Inv	0	0	0	0	0	0	0	0	0	0	0.0
Austin Hills (288) \$406-\$506 50'	DNW-Carrltn BO 1Q18	Starts	0	0	0	0	0	0	0	0	0	0	
		Closings	0	0	0	0	0	0	0	0	0	0	
		Housing Inv	0	0	0	0	0	0	0	0	0	0	0.0
		VDL Inv	0	0	0	0	0	0	0	0	0	0	0.0
Austin Waters (Carro (295)) \$430-\$465 53' <i>Darling Homes</i>	DNW-Carrltn Act 2Q07	Starts	0	0	0	0	0	0	0	0	0	0	
		Closings	0	1	0	0	0	0	0	0	0	0	
		Housing Inv	1	0	0	0	0	0	0	0	0	0	0.0
		VDL Inv	1	1	1	1	1	1	1	1	1	1	n/a
Austin Waters Townho (290) \$286-\$485 30'	DNW-Carrltn BO 1Q21	Starts	0	0	0	0	0	0	0	0	0	0	
		Closings	2	0	0	1	1	0	0	0	0	0	
		Housing Inv	2	2	2	1	0	0	0	0	0	0	0.0
		VDL Inv	0	0	0	0	0	0	0	0	0	0	0.0
Avondale (Carrollton (275)) \$358-\$435 50'	DNW-Carrltn BO 3Q16	Starts	0	0	0	0	0	0	0	0	0	0	
		Closings	0	0	0	0	0	0	0	0	0	0	
		Housing Inv	0	0	0	0	0	0	0	0	0	0	0.0
		VDL Inv	0	0	0	0	0	0	0	0	0	0	0.0
Baker's Branch Estat (137) \$280-\$286 85'-117'	DNW-FlwrMnd BO 1Q02	Starts	0	0	0	0	0	0	0	0	0	0	
		Closings	0	0	0	0	0	0	0	0	0	0	
		Housing Inv	0	0	0	0	0	0	0	0	0	0	0.0
		VDL Inv	0	0	0	0	0	0	0	0	0	0	0.0

Quarterly Activity & Inventory Report

Lewisville ISD

Sorted By Subdivision

Subdivision Name (Map No)	Sub Area	Status	1Q20	2Q20	3Q20	4Q20	1Q21	2Q21	3Q21	4Q21	1Q22	Ann. Rates/ *Inv. Supply	
Bella Lago (Flower M (12)) \$800-\$1075 150'-152'	DNW-FlwrMnd BO 2Q15	Starts	0	0	0	0	0	0	0	0	0	0	
		Closings	0	0	0	0	0	0	0	0	0	0	
		Housing Inv	0	0	0	0	0	0	0	0	0	0	0.0
		VDL Inv	0	0	0	0	0	0	0	0	0	0	0.0
Bella Strada (128) \$426-\$562 43'-70'	DNW-FlwrMnd BO 2Q16	Starts	0	0	0	0	0	0	0	0	0	0	
		Closings	0	0	0	0	0	0	0	0	0	0	
		Housing Inv	0	0	0	0	0	0	0	0	0	0	0.0
		VDL Inv	0	0	0	0	0	0	0	0	0	0	0.0
Bellaire Addition (152) \$145-\$161 65'	DNW-Lewisvl BO 4Q00	Starts	0	0	0	0	0	0	0	0	0	0	
		Closings	0	0	0	0	0	0	0	0	0	0	
		Housing Inv	0	0	0	0	0	0	0	0	0	0	0.0
		VDL Inv	0	0	0	0	0	0	0	0	0	0	0.0
Belle Creek Village (163) \$384-\$474 83'	DNW-FlwrMnd BO 2Q13	Starts	0	0	0	0	0	0	0	0	0	0	
		Closings	0	0	0	0	0	0	0	0	0	0	
		Housing Inv	0	0	0	0	0	0	0	0	0	0	0.0
		VDL Inv	0	0	0	0	0	0	0	0	0	0	0.0
Bradford Park (Flowe (72)) \$735-\$867 50'-75' <i>Village Builders</i>	DNW-FlwrMnd Act 1Q19	Starts	9	20	7	6	15	7	11	12	13	43	
		Closings	13	11	9	18	8	5	10	7	2	24	
		Housing Inv	19	28	26	14	21	23	24	29	40	20.0 mos	
		VDL Inv	46	26	89	83	68	60	49	37	24	6.7 mos	
Brentwood Court Town (298) \$410-\$439 24' <i>Havendale Homes</i>	DNW-Colony Act 1Q20	Starts	5	0	0	0	0	0	5	0	0	5	
		Closings	0	0	0	4	1	0	0	5	0	5	
		Housing Inv	5	5	5	1	0	0	5	0	0	0.0	
		VDL Inv	38	38	38	38	38	38	33	33	33	79.2 mos	
Bridlewood (41) \$213-\$850 70'-208'	DNW-FlwrMnd BO 3Q08	Starts	0	0	0	0	0	0	0	0	0	0	
		Closings	0	0	0	0	0	0	0	0	0	0	
		Housing Inv	0	0	0	0	0	0	0	0	0	0	0.0
		VDL Inv	0	0	0	0	0	0	0	0	0	0	0.0
Brighton Place (49) \$750-\$800 149'	DNW-FlwrMnd BO 1Q21	Starts	0	1	0	0	0	0	0	0	0	0	
		Closings	0	1	0	0	1	0	0	0	0	0	
		Housing Inv	1	1	1	1	0	0	0	0	0	0	0.0
		VDL Inv	1	0	0	0	0	0	0	0	0	0	0.0
Brittian Estates (151) \$450-\$570 100'	DNW-Lewisvl BO 4Q03	Starts	0	0	0	0	0	0	0	0	0	0	
		Closings	0	0	0	0	0	0	0	0	0	0	
		Housing Inv	0	0	0	0	0	0	0	0	0	0	0.0
		VDL Inv	0	0	0	0	0	0	0	0	0	0	0.0
Brookside Addition (198) \$269-\$339 50'	DNW-Lewisvl BO 3Q16	Starts	0	0	0	0	0	0	0	0	0	0	
		Closings	0	0	0	0	0	0	0	0	0	0	
		Housing Inv	0	0	0	0	0	0	0	0	0	0	0.0
		VDL Inv	0	0	0	0	0	0	0	0	0	0	0.0
Brookstone Addition (139) \$240-\$347 80'	DNW-FlwrMnd BO 4Q03	Starts	0	0	0	0	0	0	0	0	0	0	
		Closings	0	0	0	0	0	0	0	0	0	0	
		Housing Inv	0	0	0	0	0	0	0	0	0	0	0.0
		VDL Inv	0	0	0	0	0	0	0	0	0	0	0.0

Quarterly Activity & Inventory Report

Lewisville ISD

Sorted By Subdivision

Subdivision Name (Map No)	Sub Area	Price Range	Lot Size	Status	1Q20	2Q20	3Q20	4Q20	1Q21	2Q21	3Q21	4Q21	1Q22	Ann. Rates/ *Inv. Supply
Brownstones on West (203)	DNW-Lewisvl	\$400-\$450	20'	Act 1Q18	0	14	0	0	0	0	0	0	0	0
OTJV, LLC				Starts	0	14	0	0	0	0	0	0	0	0
				Closings	0	0	0	0	6	0	0	0	0	0
				Housing Inv	0	14	14	14	8	8	8	8	8	n/a
				VDL Inv	0	0	0	0	0	0	0	0	0	0.0
Bryn Mar Estates (106)	DNW-FlwrMnd	\$330-\$366	90'	BO 4Q02	0	0	0	0	0	0	0	0	0	0
				Starts	0	0	0	0	0	0	0	0	0	0
				Closings	0	0	0	0	0	0	0	0	0	0
				Housing Inv	0	0	0	0	0	0	0	0	0	0.0
				VDL Inv	0	0	0	0	0	0	0	0	0	0.0
Camey Place (284)	DNW-Colony	\$0-\$0	45'	Future	0	0	0	0	0	0	0	0	0	0
Arcadia Realty Corp/David Weekley Homes				Starts	0	0	0	0	0	0	0	0	0	0
				Closings	0	0	0	0	0	0	0	0	0	0
				Housing Inv	0	0	0	0	0	0	0	0	0	0.0
				VDL Inv	0	0	0	0	0	0	0	0	0	0.0
Camryn Downs (47)	DNW-DOak	\$750-\$800	100'	BO 4Q16	0	0	0	0	0	0	0	0	0	0
				Starts	0	0	0	0	0	0	0	0	0	0
				Closings	0	0	0	0	0	0	0	0	0	0
				Housing Inv	0	0	0	0	0	0	0	0	0	0.0
				VDL Inv	0	0	0	0	0	0	0	0	0	0.0
Canterbury Row (50)	DNW-FlwrMnd	\$450-\$600	100'	BO 2Q10	0	0	0	0	0	0	0	0	0	0
				Starts	0	0	0	0	0	0	0	0	0	0
				Closings	0	0	0	0	0	0	0	0	0	0
				Housing Inv	0	0	0	0	0	0	0	0	0	0.0
				VDL Inv	0	0	0	0	0	0	0	0	0	0.0
Carrington Village (196)	DNW-Lewisvl	\$199-\$273	35'	BO 2Q14	0	0	0	0	0	0	0	0	0	0
				Starts	0	0	0	0	0	0	0	0	0	0
				Closings	0	0	0	0	0	0	0	0	0	0
				Housing Inv	0	0	0	0	0	0	0	0	0	0.0
				VDL Inv	0	0	0	0	0	0	0	0	0	0.0
Cascades at the Lege (301)	DNW-Colony	\$149-\$194	50'-55'	BO 1Q10	0	0	0	0	0	0	0	0	0	0
				Starts	0	0	0	0	0	0	0	0	0	0
				Closings	0	0	0	0	0	0	0	0	0	0
				Housing Inv	0	0	0	0	0	0	0	0	0	0.0
				VDL Inv	0	0	0	0	0	0	0	0	0	0.0
Cascades at the Lege (303)	DNW-Colony	\$127-\$161	25'-33'	BO 1Q10	0	0	0	0	0	0	0	0	0	0
				Starts	0	0	0	0	0	0	0	0	0	0
				Closings	0	0	0	0	0	0	0	0	0	0
				Housing Inv	0	0	0	0	0	0	0	0	0	0.0
				VDL Inv	0	0	0	0	0	0	0	0	0	0.0
Castle Hills (Lewisv) (254)	DNW-Lewisvl	\$435-\$2000	40'-134'	Act 2Q98	0	0	0	0	1	8	10	1	2	21
Bella Custom Builder/Bella Vita CH/Calais				Starts	0	0	0	0	2	0	1	0	1	2
Custom Homes/Custom Homes of Texas/DW				Closings	0	0	0	0	3	11	20	21	22	132.0 mos
Homes/Holmes Builders/Malone Custom				Housing Inv	4	4	4	4	48	55	45	44	42	24.0 mos
Builders/Olivia Clarke Homes/Ron Davis				VDL Inv	49	49	49	49	48	55	45	44	42	24.0 mos
CH/Victor Myers Custom Homes														
Castle Hills / Disco (266)	DNW-Lewisvl	\$0-\$0	37'	Future	0	0	0	0	0	0	0	0	0	0
				Starts	0	0	0	0	0	0	0	0	0	0
				Closings	0	0	0	0	0	0	0	0	0	0
				Housing Inv	0	0	0	0	0	0	0	0	0	0.0
				VDL Inv	0	0	0	0	0	0	0	0	0	0.0

Quarterly Activity & Inventory Report

Lewisville ISD

Sorted By Subdivision

Subdivision Name (Map No)	Sub Area	Price Range	Lot Size	Status	1Q20	2Q20	3Q20	4Q20	1Q21	2Q21	3Q21	4Q21	1Q22	Ann. Rates/ *Inv. Supply	
Castle Hills / Windh (273) \$0-\$0 37'	DNW-Lewisvl Future	Starts			0	0	0	0	0	0	0	0	0	0	
		Closings			0	0	0	0	0	0	0	0	0	0	0
		Housing Inv			0	0	0	0	0	0	0	0	0	0	0.0
		VDL Inv			0	0	0	0	0	0	0	0	0	0	0.0
Castle Hills/Carroll (272) \$448-\$931 41'-80' <i>American Legend Homes/Belclaire Homes/Britton Homes/Shaddock Homes/Toll Brothers</i>	DNW-Carrlltn Act 4Q20	Starts			0	0	0	0	1	27	104	41	41	213	
		Closings			0	0	0	0	0	0	2	15	44	61	
		Housing Inv			0	0	0	0	1	28	130	156	153	30.1 mos	
		VDL Inv			0	0	0	69	209	278	150	109	68	3.8 mos	
Castle Hills/Chateau (258) \$390-\$455 28'	DNW-Lewisvl BO 2Q18	Starts			0	0	0	0	0	0	0	0	0	0	
		Closings			0	0	0	0	0	0	0	0	0	0	
		Housing Inv			0	0	0	0	0	0	0	0	0	0.0	
		VDL Inv			0	0	0	0	0	0	0	0	0	0.0	
Castle Hills/Northpo (263) \$448-\$831 41'-65' <i>American Legend Homes/Britton Homes/Shaddock Homes/Toll Brothers</i>	DNW-Lewisvl Act 3Q19	Starts			28	41	13	6	3	3	2	0	2	7	
		Closings			0	25	28	19	12	8	4	2	0	14	
		Housing Inv			36	52	37	24	15	10	8	6	8	6.9 mos	
		VDL Inv			227	186	173	167	164	162	159	163	161	276.0 mos	
Castle Hills/Northpo (268) \$420-\$451 36'	DNW-Lewisvl BO 1Q22	Starts			10	9	20	23	12	20	0	0	0	20	
		Closings			0	0	5	23	17	22	13	0	14	49	
		Housing Inv			10	19	34	34	29	27	14	14	0	0.0	
		VDL Inv			84	75	55	32	20	0	0	0	0	0.0	
Castle Hills/Retreat (264) \$380-\$410 42'	DNW-Lewisvl BO 2Q14	Starts			0	0	0	0	0	0	0	0	0	0	
		Closings			0	0	0	0	0	0	0	0	0	0	
		Housing Inv			0	0	0	0	0	0	0	0	0	0.0	
		VDL Inv			0	0	0	0	0	0	0	0	0	0.0	
Castle Hills/Southwe (245) \$377-\$603 50'	DNW-Carrlltn BO 1Q21	Starts			16	5	0	0	0	0	0	0	0	0	
		Closings			32	8	12	1	1	0	0	0	0	0	
		Housing Inv			17	14	2	1	0	0	0	0	0	0.0	
		VDL Inv			5	0	0	0	0	0	0	0	0	0.0	
Castle Hills/Village (261) \$425-\$440 25'	DNW-Lewisvl BO 2Q07	Starts			0	0	0	0	0	0	0	0	0	0	
		Closings			0	0	0	0	0	0	0	0	0	0	
		Housing Inv			0	0	0	0	0	0	0	0	0	0.0	
		VDL Inv			0	0	0	0	0	0	0	0	0	0.0	
Castlewood (Highland (79) \$241-\$510 68'-120'	DNW-HighVil BO 4Q10	Starts			0	0	0	0	0	0	0	0	0	0	
		Closings			0	0	0	0	0	0	0	0	0	0	
		Housing Inv			0	0	0	0	0	0	0	0	0	0.0	
		VDL Inv			0	0	0	0	0	0	0	0	0	0.0	
Cedar Creek Addition (130) \$160-\$237 50'	DNW-FlwrMnd BO 3Q06	Starts			0	0	0	0	0	0	0	0	0	0	
		Closings			0	0	0	0	0	0	0	0	0	0	
		Housing Inv			0	0	0	0	0	0	0	0	0	0.0	
		VDL Inv			0	0	0	0	0	0	0	0	0	0.0	

Quarterly Activity & Inventory Report

Lewisville ISD

Sorted By Subdivision

Subdivision Name (Map No)	Sub Area	Status	1Q20	2Q20	3Q20	4Q20	1Q21	2Q21	3Q21	4Q21	1Q22	Ann. Rates/ *Inv. Supply	
Chapel Creek Estates (60) \$260-\$393 200'	DNW-CCanyon BO 2Q00	Starts	0	0	0	0	0	0	0	0	0	0	
		Closings	0	0	0	0	0	0	0	0	0	0	
		Housing Inv	0	0	0	0	0	0	0	0	0	0	0.0
		VDL Inv	0	0	0	0	0	0	0	0	0	0	0.0
Chapel Hill Addition (75) \$255-\$330 65'-85'	DNW-HighVil BO 4Q08	Starts	0	0	0	0	0	0	0	0	0	0	
		Closings	0	0	0	0	0	0	0	0	0	0	
		Housing Inv	0	0	0	0	0	0	0	0	0	0	0.0
		VDL Inv	0	0	0	0	0	0	0	0	0	0	0.0
Chapel Springs (High) (62) \$326-\$500 65'-80'	DNW-HighVil BO 4Q14	Starts	0	0	0	0	0	0	0	0	0	0	
		Closings	0	0	0	0	0	0	0	0	0	0	
		Housing Inv	0	0	0	0	0	0	0	0	0	0	0.0
		VDL Inv	0	0	0	0	0	0	0	0	0	0	0.0
Charles Ridge (310) \$0-\$0 24'	DNW-Carrltn Future	Starts	0	0	0	0	0	0	0	0	0	0	
		Closings	0	0	0	0	0	0	0	0	0	0	
		Housing Inv	0	0	0	0	0	0	0	0	0	0	0.0
		VDL Inv	0	0	0	0	0	0	0	0	0	0	0.0
Chase Oaks Addition (176) \$159-\$237 42'-53'	DNW-Lewisvl BO 1Q14	Starts	0	0	0	0	0	0	0	0	0	0	
		Closings	0	0	0	0	0	0	0	0	0	0	
		Housing Inv	0	0	0	0	0	0	0	0	0	0	0.0
		VDL Inv	0	0	0	0	0	0	0	0	0	0	0.0
Chase Oaks Addition (177) \$174-\$231 25'	DNW-Lewisvl BO 1Q12	Starts	0	0	0	0	0	0	0	0	0	0	
		Closings	0	0	0	0	0	0	0	0	0	0	
		Housing Inv	0	0	0	0	0	0	0	0	0	0	0.0
		VDL Inv	0	0	0	0	0	0	0	0	0	0	0.0
Chateau du Lac (10) \$1250-\$3000 187'-240' <i>Calais Custom Homes/Malone Custom Builders</i>	DNW-FlwrMnd Act 3Q00	Starts	0	0	0	0	1	0	0	0	1	1	
		Closings	1	0	3	0	0	1	0	0	0	1	
		Housing Inv	5	5	2	2	3	2	2	2	3	3	36.0 mos
		VDL Inv	9	9	9	9	8	8	8	8	7	7	84.0 mos
Chaucer Estates (113) \$206-\$254 68'-85'	DNW-FlwrMnd BO 1Q00	Starts	0	0	0	0	0	0	0	0	0	0	
		Closings	0	0	0	0	0	0	0	0	0	0	
		Housing Inv	0	0	0	0	0	0	0	0	0	0	0.0
		VDL Inv	0	0	0	0	0	0	0	0	0	0	0.0
Chimney Rock (Flower) (1) \$759-\$1350 150'	DNW-FlwrMnd BO 3Q14	Starts	0	0	0	0	0	0	0	0	0	0	
		Closings	0	0	0	0	0	0	0	0	0	0	
		Housing Inv	0	0	0	0	0	0	0	0	0	0	0.0
		VDL Inv	0	0	0	0	0	0	0	0	0	0	0.0
Churchill Crossing (82) \$171-\$230 70'-100'	DNW-FlwrMnd BO 1Q00	Starts	0	0	0	0	0	0	0	0	0	0	
		Closings	0	0	0	0	0	0	0	0	0	0	
		Housing Inv	0	0	0	0	0	0	0	0	0	0	0.0
		VDL Inv	0	0	0	0	0	0	0	0	0	0	0.0
CMP Family Addition (14) \$2000-\$4000 307'	DNW-FlwrMnd BO 2Q20	Starts	0	0	0	0	0	0	0	0	0	0	
		Closings	0	2	0	0	0	0	0	0	0	0	
		Housing Inv	2	0	0	0	0	0	0	0	0	0	0.0
		VDL Inv	0	0	0	0	0	0	0	0	0	0	0.0

Dallas/Ft. Worth Residential Survey (1Q22)

Copyright Metrostudy

Page 5 of 31

metrstudy
A hanleywood Company

Sales: 1-800-227-8839

*Inventory Supply = Housing Inv/(Annual Closings/12)
Vacant Developed Lot Supply = VDL Inv/(Annual Starts/12)

N/A indicates Inventory is present but cannot calculate months of supply without starts or closings (see above).

Quarterly Activity & Inventory Report

Lewisville ISD

Sorted By Subdivision

Subdivision Name (Map No)	Sub Area	Status	1Q20	2Q20	3Q20	4Q20	1Q21	2Q21	3Q21	4Q21	1Q22	Ann. Rates/ *Inv. Supply
Coppell Greens (199)	DNW-Coppell	Starts	0	0	0	0	0	0	0	0	0	0
\$184-\$237	48'-65'	BO 2Q03	Closings	0	0	0	0	0	0	0	0	0
		Housing Inv	0	0	0	0	0	0	0	0	0	0.0
		VDL Inv	0	0	0	0	0	0	0	0	0	0.0
Copper Woods (40)	DNW-CCanyon	Starts	0	0	0	0	0	0	0	0	0	0
\$420-\$905	458'	BO 2Q08	Closings	0	0	0	0	0	0	0	0	0
		Housing Inv	0	0	0	0	0	0	0	0	0	0.0
		VDL Inv	0	0	0	0	0	0	0	0	0	0.0
Copperas Branch Addi (157)	DNW-HighVil	Starts	0	0	0	0	0	0	0	0	0	0
\$300-\$450	80'	Act 3Q03	Closings	0	0	0	0	0	0	0	0	0
Pyland Custom Homes		Housing Inv	0	0	0	0	0	0	0	0	0	0.0
		VDL Inv	9	9	9	9	9	9	9	9	9	n/a
Country Meadow Addit (89)	DNW-FlwrMnd	Starts	0	0	0	0	0	0	0	0	0	0
\$152-\$197	50'	BO 3Q01	Closings	0	0	0	0	0	0	0	0	0
		Housing Inv	0	0	0	0	0	0	0	0	0	0.0
		VDL Inv	0	0	0	0	0	0	0	0	0	0.0
Coyote Ridge (230)	DNW-Carrlltn	Starts	0	0	0	0	0	0	0	0	0	0
\$296-\$570	80'	BO 3Q06	Closings	0	0	0	0	0	0	0	0	0
		Housing Inv	0	0	0	0	0	0	0	0	0	0.0
		VDL Inv	0	0	0	0	0	0	0	0	0	0.0
Coyote Ridge/Grandvi (228)	DNW-Carrlltn	Starts	0	0	0	0	0	0	0	0	0	0
\$273-\$400	60'	BO 2Q03	Closings	0	0	0	0	0	0	0	0	0
		Housing Inv	0	0	0	0	0	0	0	0	0	0.0
		VDL Inv	0	0	0	0	0	0	0	0	0	0.0
Creekside Addn. (Car) (307)	DNW-Carrlltn	Starts	0	0	0	0	0	0	0	0	0	0
\$400-\$480	80'	BO 1Q07	Closings	0	0	0	0	0	0	0	0	0
		Housing Inv	0	0	0	0	0	0	0	0	0	0.0
		VDL Inv	0	0	0	0	0	0	0	0	0	0.0
Creekside at Austin (299)	DNW-Colony	Starts	1	0	0	0	0	0	0	0	0	0
\$427-\$606	50'-60'	BO 1Q20	Closings	2	0	0	0	0	0	0	0	0
		Housing Inv	0	0	0	0	0	0	0	0	0	0.0
		VDL Inv	0	0	0	0	0	0	0	0	0	0.0
Creekside at Heritag (147)	DNW-FlwrMnd	Starts	1	4	1	2	1	2	0	0	0	2
\$780-\$960	80'	BO 1Q22	Closings	2	4	2	3	0	5	2	1	3
		Housing Inv	10	10	9	8	9	6	4	3	0	0.0
		VDL Inv	10	6	5	3	2	0	0	0	0	0.0
Crescent Estates Add (178)	DNW-Lewisvl	Starts	0	0	0	0	0	0	0	0	0	0
\$355-\$455	50'	BO 2Q19	Closings	0	0	0	0	0	0	0	0	0
		Housing Inv	0	0	0	0	0	0	0	0	0	0.0
		VDL Inv	0	0	0	0	0	0	0	0	0	0.0
Cross Timbers (Dbl O) (11)	DNW-DOak	Starts	0	0	0	0	0	0	0	0	0	0
\$189-\$330	150'-165'	BO 2Q08	Closings	0	0	0	0	0	0	0	0	0
		Housing Inv	0	0	0	0	0	0	0	0	0	0.0
		VDL Inv	0	0	0	0	0	0	0	0	0	0.0

Dallas/Ft. Worth Residential Survey (1Q22)

Copyright Metrostudy

Page 6 of 31

metrstudy
A hanleywood Company

Sales: 1-800-227-8839

*Inventory Supply = Housing Inv/(Annual Closings/12)
Vacant Developed Lot Supply = VDL Inv/(Annual Starts/12)

N/A indicates Inventory is present but cannot calculate months of supply without starts or closings (see above).

Quarterly Activity & Inventory Report

Lewisville ISD

Sorted By Subdivision

Subdivision Name (Map No)	Sub Area	Status	1Q20	2Q20	3Q20	4Q20	1Q21	2Q21	3Q21	4Q21	1Q22	Ann. Rates/ *Inv. Supply	
CT Simmons Addition (171) \$105-\$135 38'	DNW-Lewisvl BO 2Q05	Starts	0	0	0	0	0	0	0	0	0	0	
		Closings	0	0	0	0	0	0	0	0	0	0	
		Housing Inv	0	0	0	0	0	0	0	0	0	0	0.0
		VDL Inv	0	0	0	0	0	0	0	0	0	0	0.0
Diamond Belle Estate (64) \$400-\$750 80'	DNW-FlwrMnd BO 4Q10	Starts	0	0	0	0	0	0	0	0	0	0	
		Closings	0	0	0	0	0	0	0	0	0	0	
		Housing Inv	0	0	0	0	0	0	0	0	0	0	0.0
		VDL Inv	0	0	0	0	0	0	0	0	0	0	0.0
Diamond Creek Additi (311) \$550-\$700 146'	DNW-Carrlltn BO 2Q19	Starts	0	0	0	0	0	0	0	0	0	0	
		Closings	0	0	0	0	0	0	0	0	0	0	
		Housing Inv	0	0	0	0	0	0	0	0	0	0	0.0
		VDL Inv	0	0	0	0	0	0	0	0	0	0	0.0
Diamond Hill (Lewisv (153) \$121-\$137 50'	DNW-Lewisvl BO 2Q00	Starts	0	0	0	0	0	0	0	0	0	0	
		Closings	0	0	0	0	0	0	0	0	0	0	
		Housing Inv	0	0	0	0	0	0	0	0	0	0	0.0
		VDL Inv	0	0	0	0	0	0	0	0	0	0	0.0
Diamond Ridge (279) \$107-\$190 61'	DNW-Carrlltn BO 1Q01	Starts	0	0	0	0	0	0	0	0	0	0	
		Closings	0	0	0	0	0	0	0	0	0	0	
		Housing Inv	0	0	0	0	0	0	0	0	0	0	0.0
		VDL Inv	0	0	0	0	0	0	0	0	0	0	0.0
District of Highland (98) \$282-\$355 40'	DNW-HighVil BO 3Q14	Starts	0	0	0	0	0	0	0	0	0	0	
		Closings	0	0	0	0	0	0	0	0	0	0	
		Housing Inv	0	0	0	0	0	0	0	0	0	0	0.0
		VDL Inv	0	0	0	0	0	0	0	0	0	0	0.0
Dixon Estates (90) \$0-\$0 94'	DNW-FlwrMnd Future	Starts	0	0	0	0	0	0	0	0	0	0	
		Closings	0	0	0	0	0	0	0	0	0	0	
		Housing Inv	0	0	0	0	0	0	0	0	0	0	0.0
		VDL Inv	0	0	0	0	0	0	0	0	0	0	0.0
Dominion Estates (FI (25) \$455-\$499 150'	DNW-FlwrMnd BO 2Q00	Starts	0	0	0	0	0	0	0	0	0	0	
		Closings	0	0	0	0	0	0	0	0	0	0	
		Housing Inv	0	0	0	0	0	0	0	0	0	0	0.0
		VDL Inv	0	0	0	0	0	0	0	0	0	0	0.0
Dougherty Addition T (186) \$300-\$400 21'	DNW-Lewisvl BO 4Q21	Starts	0	0	0	0	0	0	0	0	0	0	
		Closings	0	2	0	2	0	0	0	2	0	0	2
		Housing Inv	6	4	4	2	2	2	2	0	0	0	0.0
		VDL Inv	0	0	0	0	0	0	0	0	0	0	0.0
Dove Creek (Lewisvil (141) \$300-\$600 132'	DNW-Lewisvl BO 2Q08	Starts	0	0	0	0	0	0	0	0	0	0	
		Closings	0	0	0	0	0	0	0	0	0	0	
		Housing Inv	0	0	0	0	0	0	0	0	0	0	0.0
		VDL Inv	0	0	0	0	0	0	0	0	0	0	0.0
Edgewood (Flower Mou (138) \$650-\$685 65'	DNW-FlwrMnd BO 2Q20	Starts	0	0	0	0	0	0	0	0	0	0	
		Closings	2	1	0	0	0	0	0	0	0	0	
		Housing Inv	1	0	0	0	0	0	0	0	0	0	0.0
		VDL Inv	0	0	0	0	0	0	0	0	0	0	0.0

Dallas/Ft. Worth Residential Survey (1Q22)

Copyright Metrostudy

Page 7 of 31

metrostudy
A hanleywood Company

Sales: 1-800-227-8839

*Inventory Supply = Housing Inv/(Annual Closings/12)
Vacant Developed Lot Supply = VDL Inv/(Annual Starts/12)

N/A indicates Inventory is present but cannot calculate months of supply without starts or closings (see above).

Quarterly Activity & Inventory Report

Lewisville ISD

Sorted By Subdivision

Subdivision Name (Map No)	Sub Area	Status	1Q20	2Q20	3Q20	4Q20	1Q21	2Q21	3Q21	4Q21	1Q22	Ann. Rates/ *Inv. Supply	
Emerald Bay (21)	DNW-FlwrMnd	Starts	0	0	0	0	0	0	0	0	0	0	
\$610-\$650	180'	BO 2Q05	Closings	0	0	0	0	0	0	0	0	0	
			Housing Inv	0	0	0	0	0	0	0	0	0.0	
			VDL Inv	0	0	0	0	0	0	0	0	0.0	
Emerald Place (140)	DNW-FlwrMnd	Starts	0	0	0	0	0	0	0	0	0	0	
\$0-\$0	80'	Future	Closings	0	0	0	0	0	0	0	0	0	
			Housing Inv	0	0	0	0	0	0	0	0	0.0	
			VDL Inv	0	0	0	0	0	0	0	0	0.0	
Essex Park Townhomes (280)	DNW-Carrltn	Starts	11	15	16	8	10	15	7	1	0	23	
\$512-\$554	45'	Act 3Q19	Closings	0	9	11	12	8	9	15	12	2	38
<i>Normandy Homes</i>			Housing Inv	12	18	23	19	21	27	19	8	6	1.9 mos
			VDL Inv	72	57	41	33	23	8	1	0	0	0.0
Estancia Estates (54)	DNW-FlwrMnd	Starts	0	0	0	0	0	0	0	0	0	0	
\$475-\$616	80'	BO 4Q19	Closings	0	0	0	0	0	0	0	0	0	
			Housing Inv	0	0	0	0	0	0	0	0	0.0	
			VDL Inv	0	0	0	0	0	0	0	0	0.0	
Estates @ Copper Can (39)	DNW-CCanyon	Starts	0	0	0	0	0	0	0	0	0	0	
\$750-\$950	190'	BO 2Q08	Closings	0	0	0	0	0	0	0	0	0	
			Housing Inv	0	0	0	0	0	0	0	0	0.0	
			VDL Inv	0	0	0	0	0	0	0	0	0.0	
Estates at Lake Vist (227)	DNW-Coppell	Starts	0	0	0	0	0	0	0	0	0	0	
\$327-\$410	52'	BO 3Q15	Closings	0	0	0	0	0	0	0	0	0	
			Housing Inv	0	0	0	0	0	0	0	0	0.0	
			VDL Inv	0	0	0	0	0	0	0	0	0.0	
Estates of Double Oa (23)	DNW-DOak	Starts	0	0	0	0	0	0	0	0	0	0	
\$410-\$500	150'	BO 2Q04	Closings	0	0	0	0	0	0	0	0	0	
			Housing Inv	0	0	0	0	0	0	0	0	0.0	
			VDL Inv	0	0	0	0	0	0	0	0	0.0	
Estates of Flower Mo (88)	DNW-FlwrMnd	Starts	0	0	0	0	0	0	0	0	0	0	
\$244-\$293	80'	BO 1Q02	Closings	0	0	0	0	0	0	0	0	0	
			Housing Inv	0	0	0	0	0	0	0	0	0.0	
			VDL Inv	0	0	0	0	0	0	0	0	0.0	
Estates of Indian Cr (236)	DNW-Carrltn	Starts	0	0	0	0	0	0	0	0	0	0	
\$365-\$424	50'	BO 3Q16	Closings	0	0	0	0	0	0	0	0	0	
			Housing Inv	0	0	0	0	0	0	0	0	0.0	
			VDL Inv	0	0	0	0	0	0	0	0	0.0	
Estuary Pointe (17)	DNW-FlwrMnd	Starts	0	0	0	0	0	0	0	0	0	0	
\$0-\$0	150'	Future	Closings	0	0	0	0	0	0	0	0	0	
			Housing Inv	0	0	0	0	0	0	0	0	0.0	
			VDL Inv	0	0	0	0	0	0	0	0	0.0	
Fairwater (291)	DNE-Frisco	Starts	0	0	0	0	0	0	0	0	0	0	
\$664-\$685	65'	BO 2Q20	Closings	0	1	0	0	0	0	0	0	0	
			Housing Inv	1	0	0	0	0	0	0	0	0.0	
			VDL Inv	0	0	0	0	0	0	0	0	0.0	

Dallas/Ft. Worth Residential Survey (1Q22)

Copyright Metrostudy

Page 8 of 31

*Inventory Supply = Housing Inv/(Annual Closings/12)
Vacant Developed Lot Supply = VDL Inv/(Annual Starts/12)

N/A indicates Inventory is present but cannot calculate months of supply without starts or closings (see above).

metrstudy
A hanleywood Company

Sales: 1-800-227-8839

Quarterly Activity & Inventory Report

Lewisville ISD

Sorted By Subdivision

Subdivision Name (Map No)	Sub Area	Status	1Q20	2Q20	3Q20	4Q20	1Q21	2Q21	3Q21	4Q21	1Q22	Ann. Rates/ *Inv. Supply	
Fallbrook (143) \$275-\$290 80'	DNW-FlwrMnd BO 1Q04	Starts	0	0	0	0	0	0	0	0	0	0	
		Closings	0	0	0	0	0	0	0	0	0	0	
		Housing Inv	0	0	0	0	0	0	0	0	0	0	0.0
		VDL Inv	0	0	0	0	0	0	0	0	0	0	0.0
Flower Mound Oaks (142) \$454-\$512 80'	DNW-FlwrMnd BO 1Q15	Starts	0	0	0	0	0	0	0	0	0	0	
		Closings	0	0	0	0	0	0	0	0	0	0	
		Housing Inv	0	0	0	0	0	0	0	0	0	0	0.0
		VDL Inv	0	0	0	0	0	0	0	0	0	0	0.0
Flower Mound Woods (52) \$442-\$506 109'	DNW-FlwrMnd BO 4Q12	Starts	0	0	0	0	0	0	0	0	0	0	
		Closings	0	0	0	0	0	0	0	0	0	0	
		Housing Inv	0	0	0	0	0	0	0	0	0	0	0.0
		VDL Inv	0	0	0	0	0	0	0	0	0	0	0.0
Forest Park Estates (83) \$150-\$200 65'	DNW-FlwrMnd BO 2Q00	Starts	0	0	0	0	0	0	0	0	0	0	
		Closings	0	0	0	0	0	0	0	0	0	0	
		Housing Inv	0	0	0	0	0	0	0	0	0	0	0.0
		VDL Inv	0	0	0	0	0	0	0	0	0	0	0.0
Forest Vista Estates (117) \$550-\$700 Ark Custom Homes/Marvel Homes 85'	DNW-FlwrMnd Act 3Q09	Starts	0	0	0	0	0	0	0	1	0	1	
		Closings	0	1	0	0	0	0	0	0	0	0	
		Housing Inv	1	0	0	0	0	0	0	0	1	1	n/a
		VDL Inv	1	1	1	1	1	1	1	1	0	0	0.0
Forums Residential, (96) \$223-\$245 95'	DNW-FlwrMnd BO 4Q08	Starts	0	0	0	0	0	0	0	0	0	0	
		Closings	0	0	0	0	0	0	0	0	0	0	
		Housing Inv	0	0	0	0	0	0	0	0	0	0	0.0
		VDL Inv	0	0	0	0	0	0	0	0	0	0	0.0
Fox Creek Estates (194) \$154-\$195 63'-70'	DNW-Lewisvl BO 2Q01	Starts	0	0	0	0	0	0	0	0	0	0	
		Closings	0	0	0	0	0	0	0	0	0	0	
		Housing Inv	0	0	0	0	0	0	0	0	0	0	0.0
		VDL Inv	0	0	0	0	0	0	0	0	0	0	0.0
Foxborough Hollow (122) \$260-\$265 90'	DNW-FlwrMnd BO 2Q00	Starts	0	0	0	0	0	0	0	0	0	0	
		Closings	0	0	0	0	0	0	0	0	0	0	
		Housing Inv	0	0	0	0	0	0	0	0	0	0	0.0
		VDL Inv	0	0	0	0	0	0	0	0	0	0	0.0
Frisco 45 (321) \$0-\$0 19'	DNE-Frisco Future	Starts	0	0	0	0	0	0	0	0	0	0	
		Closings	0	0	0	0	0	0	0	0	0	0	
		Housing Inv	0	0	0	0	0	0	0	0	0	0	0.0
		VDL Inv	0	0	0	0	0	0	0	0	0	0	0.0
Garden Park Place (154) \$132-\$183 53'	DNW-Lewisvl BO 1Q04	Starts	0	0	0	0	0	0	0	0	0	0	
		Closings	0	0	0	0	0	0	0	0	0	0	
		Housing Inv	0	0	0	0	0	0	0	0	0	0	0.0
		VDL Inv	0	0	0	0	0	0	0	0	0	0	0.0
Garden Ridge Additio (156) \$115-\$120 40'-50'	DNW-Lewisvl BO 2Q01	Starts	0	0	0	0	0	0	0	0	0	0	
		Closings	0	0	0	0	0	0	0	0	0	0	
		Housing Inv	0	0	0	0	0	0	0	0	0	0	0.0
		VDL Inv	0	0	0	0	0	0	0	0	0	0	0.0

Dallas/Ft. Worth Residential Survey (1Q22)

Copyright Metrostudy

Page 9 of 31

metrstudy
A hanleywood Company

Sales: 1-800-227-8839

*Inventory Supply = Housing Inv/(Annual Closings/12)
Vacant Developed Lot Supply = VDL Inv/(Annual Starts/12)

N/A indicates Inventory is present but cannot calculate months of supply without starts or closings (see above).

Quarterly Activity & Inventory Report

Lewisville ISD

Sorted By Subdivision

Subdivision Name (Map No)	Sub Area	Status	1Q20	2Q20	3Q20	4Q20	1Q21	2Q21	3Q21	4Q21	1Q22	Ann. Rates/ *Inv. Supply	
Garza Lake Estates (259) \$0-\$0 55'	DNW-Colony	Starts	0	0	0	0	0	0	0	0	0	0	
		Future Closings	0	0	0	0	0	0	0	0	0	0	0
		Housing Inv	0	0	0	0	0	0	0	0	0	0	0.0
		VDL Inv	0	0	0	0	0	0	0	0	0	0	0.0
Gates of Prestonwood (317) \$600-\$1000 80' J Anthony Custom Homes/J. Stiles/JD Smith Custom Homes/Laguna Homes	DNW-Carrltn Act 4Q02	Starts	0	1	0	0	0	0	0	0	0	0	
		Closings	0	0	0	0	0	0	0	1	0	0	1
		Housing Inv	0	1	1	1	1	1	1	1	0	0	0.0
		VDL Inv	2	1	1	1	1	1	1	1	1	1	n/a
Grace Park (44) \$0-\$0 87'-100'	DNW-FlwrMnd Future	Starts	0	0	0	0	0	0	0	0	0	0	
		Closings	0	0	0	0	0	0	0	0	0	0	0
		Housing Inv	0	0	0	0	0	0	0	0	0	0	0.0
		VDL Inv	0	0	0	0	0	0	0	0	0	0	0.0
Grand Park Estates (114) \$310-\$406 80'	DNW-FlwrMnd BO 4Q07	Starts	0	0	0	0	0	0	0	0	0	0	
		Closings	0	0	0	0	0	0	0	0	0	0	0
		Housing Inv	0	0	0	0	0	0	0	0	0	0	0.0
		VDL Inv	0	0	0	0	0	0	0	0	0	0	0.0
Great Lakes Crossing (165) \$0-\$0 50'	DNW-Lewisvl Future	Starts	0	0	0	0	0	0	0	0	0	0	
		Closings	0	0	0	0	0	0	0	0	0	0	0
		Housing Inv	0	0	0	0	0	0	0	0	0	0	0.0
		VDL Inv	0	0	0	0	0	0	0	0	0	0	0.0
Greenvalley Addition (173) \$170-\$200 20'	DNW-Lewisvl Future	Starts	0	0	0	6	0	0	0	0	0	0	
		Closings	0	0	0	0	0	0	6	0	0	0	6
		Housing Inv	0	0	0	6	6	6	0	0	0	0	0.0
		VDL Inv	0	0	0	0	0	0	0	0	0	0	0.0
Greenway Park (241) \$178-\$397 65'-80'	DNW-Carrltn BO 2Q03	Starts	0	0	0	0	0	0	0	0	0	0	
		Closings	0	0	0	0	0	0	0	0	0	0	0
		Housing Inv	0	0	0	0	0	0	0	0	0	0	0.0
		VDL Inv	0	0	0	0	0	0	0	0	0	0	0.0
Hamilton Park (287) \$422-\$422 45'	DNW-Carrltn BO 3Q21	Starts	19	12	1	1	2	0	0	0	0	0	
		Closings	11	14	19	7	2	0	4	0	0	0	4
		Housing Inv	30	28	10	4	4	4	0	0	0	0	0.0
		VDL Inv	16	4	3	2	0	0	0	0	0	0	0.0
Harris Street Townho (209) \$300-\$300 30'	DNW-Lewisvl BO 4Q21	Starts	0	0	0	0	0	0	0	4	0	4	
		Closings	0	0	0	0	0	0	0	4	0	0	4
		Housing Inv	0	0	0	0	0	0	0	0	0	0	0.0
		VDL Inv	0	0	0	0	0	0	0	0	0	0	0.0
Hawthorne (116) \$435-\$532 70'	DNW-FlwrMnd BO 2Q16	Starts	0	0	0	0	0	0	0	0	0	0	
		Closings	0	0	0	0	0	0	0	0	0	0	0
		Housing Inv	0	0	0	0	0	0	0	0	0	0	0.0
		VDL Inv	0	0	0	0	0	0	0	0	0	0	0.0
Hearthstone @ Firewh (115) \$147-\$180 50'	DNW-FlwrMnd BO 3Q05	Starts	0	0	0	0	0	0	0	0	0	0	
		Closings	0	0	0	0	0	0	0	0	0	0	0
		Housing Inv	0	0	0	0	0	0	0	0	0	0	0.0
		VDL Inv	0	0	0	0	0	0	0	0	0	0	0.0

Dallas/Ft. Worth Residential Survey (1Q22)

Copyright Metrostudy

Page 10 of 31

*Inventory Supply = Housing Inv/(Annual Closings/12)
Vacant Developed Lot Supply = VDL Inv/(Annual Starts/12)

N/A indicates Inventory is present but cannot calculate months of supply without starts or closings (see above).

metrstudy
A hanleywood Company

Sales: 1-800-227-8839

Quarterly Activity & Inventory Report

Lewisville ISD

Sorted By Subdivision

Subdivision Name (Map No)	Sub Area	Status	1Q20	2Q20	3Q20	4Q20	1Q21	2Q21	3Q21	4Q21	1Q22	Ann. Rates/ *Inv. Supply	
Hedrick Estates (168) \$134-\$140 50'	DNW-Lewisvl BO 1Q01	Starts	0	0	0	0	0	0	0	0	0	0	
		Closings	0	0	0	0	0	0	0	0	0	0	0
		Housing Inv	0	0	0	0	0	0	0	0	0	0	0.0
		VDL Inv	0	0	0	0	0	0	0	0	0	0	0.0
Heritage Hill (Lewis) (202) \$145-\$164 35'	DNW-Lewisvl BO 2Q07	Starts	0	0	0	0	0	0	0	0	0	0	
		Closings	0	0	0	0	0	0	0	0	0	0	0
		Housing Inv	0	0	0	0	0	0	0	0	0	0	0.0
		VDL Inv	0	0	0	0	0	0	0	0	0	0	0.0
Heritage Square Addi (197) \$140-\$180 35'	DNW-Lewisvl BO 4Q09	Starts	0	0	0	0	0	0	0	0	0	0	
		Closings	0	0	0	0	0	0	0	0	0	0	0
		Housing Inv	0	0	0	0	0	0	0	0	0	0	0.0
		VDL Inv	0	0	0	0	0	0	0	0	0	0	0.0
Heritage Trails Addi (172) \$348-\$432 24'-32' <i>Gehan Homes/History Maker Homes</i>	DNW-Lewisvl Act 1Q21	Starts	0	0	0	0	40	26	11	55	42	134	
		Closings	0	0	0	0	0	0	0	32	29	61	
		Housing Inv	0	0	0	0	40	66	77	100	113	22.2 mos	
		VDL Inv	0	0	0	0	208	182	171	117	75	6.7 mos	
Heritage West (125) \$1000-\$1200 70' <i>Toll Brothers</i>	DNW-FlwrMnd Act 4Q21	Starts	0	0	0	0	0	0	0	0	8	8	
		Closings	0	0	0	0	0	0	0	0	0	0	0
		Housing Inv	0	0	0	0	0	0	0	0	0	8	n/a
		VDL Inv	0	0	0	0	0	0	0	30	22	33.0 mos	
Hickory Springs at F (93) \$322-\$382 94'	DNW-FlwrMnd BO 4Q07	Starts	0	0	0	0	0	0	0	0	0	0	
		Closings	0	0	0	0	0	0	0	0	0	0	0
		Housing Inv	0	0	0	0	0	0	0	0	0	0	0.0
		VDL Inv	0	0	0	0	0	0	0	0	0	0	0.0
Hidden Creek Estates (34) \$850-\$1000 250' <i>Precision Builders</i>	DNW-CCanyon Act 2Q08	Starts	0	0	0	0	0	0	0	0	0	0	
		Closings	0	0	0	0	0	0	0	0	0	0	0
		Housing Inv	0	0	0	0	0	0	0	0	0	0	0.0
		VDL Inv	6	6	6	6	6	6	6	6	6	6	n/a
Hidden Island (237) \$210-\$280 65'	DNW-Carrltn BO 3Q06	Starts	0	0	0	0	0	0	0	0	0	0	
		Closings	0	0	0	0	0	0	0	0	0	0	0
		Housing Inv	0	0	0	0	0	0	0	0	0	0	0.0
		VDL Inv	0	0	0	0	0	0	0	0	0	0	0.0
Hidden Valley Estate (8) \$160-\$550 100'-224'	DNW-FlwrMnd BO 2Q08	Starts	0	0	0	0	0	0	0	0	0	0	
		Closings	0	0	0	0	0	0	0	0	0	0	0
		Housing Inv	0	0	0	0	0	0	0	0	0	0	0.0
		VDL Inv	0	0	0	0	0	0	0	0	0	0	0.0
High Meadow (Flower) (2) \$700-\$963 120'	DNW-FlwrMnd BO 4Q20	Starts	0	1	0	0	0	0	0	0	0	0	
		Closings	0	0	0	1	0	0	0	0	0	0	0
		Housing Inv	0	1	1	0	0	0	0	0	0	0	0.0
		VDL Inv	1	0	0	0	0	0	0	0	0	0	0.0
Highland Court (78) \$471-\$656 50'-70'	DNW-FlwrMnd BO 1Q21	Starts	5	10	10	3	0	0	0	0	0	0	
		Closings	5	3	7	15	8	0	0	0	0	0	0
		Housing Inv	10	17	20	8	0	0	0	0	0	0	0.0
		VDL Inv	23	13	3	0	0	0	0	0	0	0	0.0

Quarterly Activity & Inventory Report

Lewisville ISD

Sorted By Subdivision

Subdivision Name (Map No)	Sub Area	Price Range	Lot Size	Status	1Q20	2Q20	3Q20	4Q20	1Q21	2Q21	3Q21	4Q21	1Q22	Ann. Rates/ *Inv. Supply	
Highland Lakes (Lewi (162)) \$200-\$235 60'-61'	DNW-Lewisvl BO 2Q01	Starts			0	0	0	0	0	0	0	0	0	0	
		Closings			0	0	0	0	0	0	0	0	0	0	0
		Housing Inv			0	0	0	0	0	0	0	0	0	0	0.0
		VDL Inv			0	0	0	0	0	0	0	0	0	0	0.0
Highland Oaks (Highl (70)) \$729-\$754 95' Bud Bartley Homes/Lexington Homes/Victor Myers Custom Homes	DNW-HighVil Act 1Q09	Starts			0	0	0	0	0	0	0	1	0	1	
		Closings			0	0	0	0	0	0	0	0	0	0	0
		Housing Inv			0	0	0	0	0	0	0	0	1	1	n/a
		VDL Inv			1	1	1	1	1	1	1	1	0	0	0.0
Highland Shores (77) \$235-\$750 60'-110' Century Custom Homes/Fountain Custom Homes/Timcrest Homes	DNW-HighVil Act 2Q84	Starts			0	0	0	0	0	0	0	1	0	1	
		Closings			0	0	0	0	0	0	0	0	0	0	0
		Housing Inv			0	0	0	0	0	0	0	0	1	1	n/a
		VDL Inv			5	5	5	5	5	5	5	5	4	4	48.0 mos
Highland Terraces (L (212)) \$366-\$391 36'	DNW-Lewisvl BO 4Q21	Starts			1	5	10	1	0	0	1	0	0	1	
		Closings			11	3	2	14	0	0	1	1	0	0	2
		Housing Inv			4	6	14	1	1	1	1	1	0	0	0.0
		VDL Inv			17	12	2	1	1	1	1	0	0	0	0.0
Highlands/The (Lewis (145)) \$95-\$274 70'-100'	DNW-Lewisvl BO 2Q07	Starts			0	0	0	0	0	0	0	0	0	0	
		Closings			0	0	0	0	0	0	0	0	0	0	0
		Housing Inv			0	0	0	0	0	0	0	0	0	0	0.0
		VDL Inv			0	0	0	0	0	0	0	0	0	0	0.0
Highpoint Oaks Est. (201) \$336-\$540 50'	DNW-Lewisvl BO 4Q18	Starts			0	0	0	0	0	0	0	0	0	0	
		Closings			0	0	0	0	0	0	0	0	0	0	0
		Housing Inv			0	0	0	0	0	0	0	0	0	0	0.0
		VDL Inv			0	0	0	0	0	0	0	0	0	0	0.0
Hills @ Prestonwood (327) \$346-\$545 75'-90'	DNE-Plano BO 4Q01	Starts			0	0	0	0	0	0	0	0	0	0	
		Closings			0	0	0	0	0	0	0	0	0	0	0
		Housing Inv			0	0	0	0	0	0	0	0	0	0	0.0
		VDL Inv			0	0	0	0	0	0	0	0	0	0	0.0
Hills @ Prestonwood (330) \$309-\$370 50'	DNE-Plano BO 4Q00	Starts			0	0	0	0	0	0	0	0	0	0	
		Closings			0	0	0	0	0	0	0	0	0	0	0
		Housing Inv			0	0	0	0	0	0	0	0	0	0	0.0
		VDL Inv			0	0	0	0	0	0	0	0	0	0	0.0
Hills @ Prestonwood (319) \$242-\$401 75'-90'	DNE-Plano BO 2Q01	Starts			0	0	0	0	0	0	0	0	0	0	
		Closings			0	0	0	0	0	0	0	0	0	0	0
		Housing Inv			0	0	0	0	0	0	0	0	0	0	0.0
		VDL Inv			0	0	0	0	0	0	0	0	0	0	0.0
Hills @ Prestonwood (316) \$285-\$550 50'	DNE-Plano BO 3Q02	Starts			0	0	0	0	0	0	0	0	0	0	
		Closings			0	0	0	0	0	0	0	0	0	0	0
		Housing Inv			0	0	0	0	0	0	0	0	0	0	0.0
		VDL Inv			0	0	0	0	0	0	0	0	0	0	0.0
Hills at Indian Cree (238) \$315-\$447 52'-62'	DNW-Carrlltn BO 4Q15	Starts			0	0	0	0	0	0	0	0	0	0	
		Closings			0	0	0	0	0	0	0	0	0	0	0
		Housing Inv			0	0	0	0	0	0	0	0	0	0	0.0
		VDL Inv			0	0	0	0	0	0	0	0	0	0	0.0

Dallas/Ft. Worth Residential Survey (1Q22)

Copyright Metrostudy

Page 12 of 31

metrstudy
A hanleywood Company

Sales: 1-800-227-8839

*Inventory Supply = Housing Inv/(Annual Closings/12)
Vacant Developed Lot Supply = VDL Inv/(Annual Starts/12)

N/A indicates Inventory is present but cannot calculate months of supply without starts or closings (see above).

Quarterly Activity & Inventory Report

Lewisville ISD

Sorted By Subdivision

Subdivision Name (Map No)	Sub Area	Price Range	Lot Size	Status	1Q20	2Q20	3Q20	4Q20	1Q21	2Q21	3Q21	4Q21	1Q22	Ann. Rates/ *Inv. Supply
Hills of Kingswood, (282)	DNE-Frisco			Starts	5	11	8	9	0	2	27	12	5	46
\$1460-\$4500	65'-150'	Act 1Q09		Closings	1	6	5	2	3	19	0	9	13	41
				Housing Inv	26	31	34	41	38	21	48	51	43	12.6 mos
				VDL Inv	78	108	118	109	109	107	80	76	71	18.5 mos
<i>Bella Custom Homes/Crest Custom Homes/Grand Homes/Greystone Custom Homebuilders/J Lambert Custom Homes/Laguna Homes/Millennial Design Build/Monaco Homes Ltd/Oak Creek Custom Homes/Premier Renovations/Reynolds Signature Homes/Ron Davis CH/Sovereign Custom</i>														
Hills of Preston Cre (333)	DNE-Plano			Starts	0	0	0	0	0	0	0	0	0	0
\$450-\$470	75'-100'	BO 2Q01		Closings	0	0	0	0	0	0	0	0	0	0
				Housing Inv	0	0	0	0	0	0	0	0	0	0.0
				VDL Inv	0	0	0	0	0	0	0	0	0	0.0
Hills of Vista Ridge (217)	DNW-Lewisvl			Starts	0	0	0	0	0	0	0	0	0	0
\$336-\$421	50'	BO 4Q17		Closings	0	0	0	0	0	0	0	0	0	0
				Housing Inv	0	0	0	0	0	0	0	0	0	0.0
				VDL Inv	0	0	0	0	0	0	0	0	0	0.0
Hillside of Flower M (5)	DNW-FlwrMnd			Starts	0	2	0	0	1	3	0	0	1	4
\$700-\$1200	110'	Act 2Q18		Closings	0	1	0	1	1	2	0	0	2	4
				Housing Inv	2	3	3	2	2	3	3	3	2	6.0 mos
				VDL Inv	25	23	23	23	22	19	19	19	18	54.0 mos
Homestead @ Carrollt (274)	DNW-Carrlltn			Starts	0	0	0	0	0	0	0	0	0	0
\$192-\$600	55'-127'	BO 2Q08		Closings	0	0	0	0	0	0	0	0	0	0
				Housing Inv	0	0	0	0	0	0	0	0	0	0.0
				VDL Inv	0	0	0	0	0	0	0	0	0	0.0
Hunter's Glen (Flowe (118)	DNW-FlwrMnd			Starts	0	0	0	0	0	0	0	0	0	0
\$539-\$680	85'	BO 4Q18		Closings	0	0	0	0	0	0	0	0	0	0
				Housing Inv	0	0	0	0	0	0	0	0	0	0.0
				VDL Inv	0	0	0	0	0	0	0	0	0	0.0
Hunters Glen (Lewisv (175)	DNW-Lewisvl			Starts	0	0	0	0	0	0	0	0	0	0
\$60-\$144	40'	BO 3Q00		Closings	0	0	0	0	0	0	0	0	0	0
				Housing Inv	0	0	0	0	0	0	0	0	0	0.0
				VDL Inv	0	0	0	0	0	0	0	0	0	0.0
Immel Estates (4)	DNW-FlwrMnd			Starts	0	0	0	0	0	0	0	0	0	0
\$549-\$563	200'-216'	BO 3Q04		Closings	0	0	0	0	0	0	0	0	0	0
				Housing Inv	0	0	0	0	0	0	0	0	0	0.0
				VDL Inv	0	0	0	0	0	0	0	0	0	0.0
Indian Creek Meadows (276)	DNW-Carrlltn			Starts	0	0	0	0	0	0	0	0	0	0
\$147-\$190	50'	BO 2Q03		Closings	0	0	0	0	0	0	0	0	0	0
				Housing Inv	0	0	0	0	0	0	0	0	0	0.0
				VDL Inv	0	0	0	0	0	0	0	0	0	0.0
Indian Creek/Cedar E (232)	DNW-Carrlltn			Starts	0	0	0	0	0	0	0	0	0	0
\$160-\$229	65'-80'	BO 2Q01		Closings	0	0	0	0	0	0	0	0	0	0
				Housing Inv	0	0	0	0	0	0	0	0	0	0.0
				VDL Inv	0	0	0	0	0	0	0	0	0	0.0

Dallas/Ft. Worth Residential Survey (1Q22)

Copyright Metrostudy

Page 13 of 31

metrstudy
A hanleywood Company

Sales: 1-800-227-8839

*Inventory Supply = Housing Inv/(Annual Closings/12)
Vacant Developed Lot Supply = VDL Inv/(Annual Starts/12)

N/A indicates Inventory is present but cannot calculate months of supply without starts or closings (see above).

Quarterly Activity & Inventory Report

Lewisville ISD

Sorted By Subdivision

Subdivision Name (Map No)	Sub Area	Status	1Q20	2Q20	3Q20	4Q20	1Q21	2Q21	3Q21	4Q21	1Q22	Ann. Rates/ *Inv. Supply	
Indian Creek/Elm Woo (231) \$173-\$229 65'-73'	DNW-Carrltn BO 4Q01	Starts	0	0	0	0	0	0	0	0	0	0	
		Closings	0	0	0	0	0	0	0	0	0	0	
		Housing Inv	0	0	0	0	0	0	0	0	0	0	0.0
		VDL Inv	0	0	0	0	0	0	0	0	0	0	0.0
Indian Creek/Indian (235) \$188-\$243 65'	DNW-Carrltn BO 4Q02	Starts	0	0	0	0	0	0	0	0	0	0	
		Closings	0	0	0	0	0	0	0	0	0	0	
		Housing Inv	0	0	0	0	0	0	0	0	0	0	0.0
		VDL Inv	0	0	0	0	0	0	0	0	0	0	0.0
Indian Creek/Oakwood (229) \$168-\$197 65'	DNW-Carrltn BO 2Q01	Starts	0	0	0	0	0	0	0	0	0	0	
		Closings	0	0	0	0	0	0	0	0	0	0	
		Housing Inv	0	0	0	0	0	0	0	0	0	0	0.0
		VDL Inv	0	0	0	0	0	0	0	0	0	0	0.0
Kathryn Commons Addn (214) \$140-\$180 17'	DNW-Lewisvl BO 2Q12	Starts	0	0	0	0	0	0	0	0	0	0	
		Closings	0	0	0	0	0	0	0	0	0	0	
		Housing Inv	0	0	0	0	0	0	0	0	0	0	0.0
		VDL Inv	0	0	0	0	0	0	0	0	0	0	0.0
Kensington Park Esta (16) \$900-\$950 290'	DNW-FlwrMnd BO 4Q01	Starts	0	0	0	0	0	0	0	0	0	0	
		Closings	0	0	0	0	0	0	0	0	0	0	
		Housing Inv	0	0	0	0	0	0	0	0	0	0	0.0
		VDL Inv	0	0	0	0	0	0	0	0	0	0	0.0
Kensington Place (305) \$500-\$800 50'-70' <i>Darling Homes/K. Hovnanian Homes</i>	DNW-Carrltn Act 4Q21	Starts	0	0	0	0	0	0	0	0	1	1	
		Closings	0	0	0	0	0	0	0	0	0	0	
		Housing Inv	0	0	0	0	0	0	0	0	1	1	n/a
		VDL Inv	0	0	0	0	0	0	0	0	96	95	1,140.0 mos
Kings Gate (Plano) (324) \$1900-\$6500 162'	DNE-Plano Act 1Q96	Starts	0	0	0	0	1	0	0	2	0	2	
		Closings	0	0	0	0	0	0	0	0	0	0	
		Housing Inv	0	0	0	0	1	1	1	3	3	3	n/a
		VDL Inv	5	5	5	5	4	4	4	2	2	2	12.0 mos
Kings Grant Addition (255) \$399-\$409 53'-55'	DNW-Lewisvl BO 1Q15	Starts	0	0	0	0	0	0	0	0	0	0	
		Closings	0	0	0	0	0	0	0	0	0	0	
		Housing Inv	0	0	0	0	0	0	0	0	0	0	0.0
		VDL Inv	0	0	0	0	0	0	0	0	0	0	0.0
Kings Ridge Addition (314) \$269-\$1380 50'-90'	DNE-Plano BO 2Q17	Starts	0	0	0	0	0	0	0	0	0	0	
		Closings	0	0	0	0	0	0	0	0	0	0	
		Housing Inv	0	0	0	0	0	0	0	0	0	0	0.0
		VDL Inv	0	0	0	0	0	0	0	0	0	0	0.0
Ladera Highland Vill (61) \$358-\$469 42'	DNW-HighVil BO 3Q21	Starts	9	7	3	8	4	4	0	0	0	4	
		Closings	14	7	7	8	3	6	8	0	0	0	14
		Housing Inv	13	13	9	9	10	8	0	0	0	0	0.0
		VDL Inv	26	19	16	8	4	0	0	0	0	0	0.0
Lake Forest Estates (76) \$230-\$276 75'-77'	DNW-FlwrMnd BO 1Q02	Starts	0	0	0	0	0	0	0	0	0	0	
		Closings	0	0	0	0	0	0	0	0	0	0	
		Housing Inv	0	0	0	0	0	0	0	0	0	0	0.0
		VDL Inv	0	0	0	0	0	0	0	0	0	0	0.0

Dallas/Ft. Worth Residential Survey (1Q22)

Copyright Metrostudy

Page 14 of 31

metrstudy
A hanleywood Company

Sales: 1-800-227-8839

*Inventory Supply = Housing Inv/(Annual Closings/12)
Vacant Developed Lot Supply = VDL Inv/(Annual Starts/12)

N/A indicates Inventory is present but cannot calculate months of supply without starts or closings (see above).

Quarterly Activity & Inventory Report

Lewisville ISD

Sorted By Subdivision

Subdivision Name (Map No)	Sub Area	Status	1Q20	2Q20	3Q20	4Q20	1Q21	2Q21	3Q21	4Q21	1Q22	Ann. Rates/ *Inv. Supply
Lake Hill Estates (7)	DNW-FlwrMnd	Starts	0	0	0	0	0	0	0	0	0	0
\$300-\$305	145'	BO 2Q01	Closings	0	0	0	0	0	0	0	0	0
			Housing Inv	0	0	0	0	0	0	0	0	0.0
			VDL Inv	0	0	0	0	0	0	0	0	0.0
Lakemont Addition (97)	DNW-FlwrMnd	Starts	0	0	0	0	0	0	0	0	0	0
\$289-\$315	95'	BO 3Q05	Closings	0	0	0	0	0	0	0	0	0
			Housing Inv	0	0	0	0	0	0	0	0	0.0
			VDL Inv	0	0	0	0	0	0	0	0	0.0
Lakeridge Townhomes (247)	DNW-Lewisvl	Starts	0	0	0	0	0	0	0	0	0	0
\$256-\$270	22'	Act 2Q06	Closings	0	0	0	0	0	0	0	0	0
<i>Sumeer Homes</i>			Housing Inv	0	0	0	0	0	0	0	0	0.0
			VDL Inv	1	1	1	1	1	1	1	1	n/a
Lakes Legacy/Heritag (313)	DNE-Frisco	Starts	0	0	0	0	0	0	0	0	0	0
\$212-\$412	50'-70'	BO 2Q07	Closings	0	0	0	0	0	0	0	0	0
			Housing Inv	0	0	0	0	0	0	0	0	0.0
			VDL Inv	0	0	0	0	0	0	0	0	0.0
Lakes Legacy/Lakehil (328)	DNE-Frisco	Starts	0	0	0	0	0	0	0	0	0	0
\$284-\$423	65'-78'	BO 3Q03	Closings	0	0	0	0	0	0	0	0	0
			Housing Inv	0	0	0	0	0	0	0	0	0.0
			VDL Inv	0	0	0	0	0	0	0	0	0.0
Lakes Legacy/The Lak (326)	DNE-Frisco	Starts	0	0	0	0	0	0	0	0	0	0
\$525-\$1250	77'	BO 1Q12	Closings	0	0	0	0	0	0	0	0	0
			Housing Inv	0	0	0	0	0	0	0	0	0.0
			VDL Inv	0	0	0	0	0	0	0	0	0.0
Lakes Legacy/The Vil (323)	DNE-Frisco	Starts	0	0	0	0	0	0	0	0	0	0
\$269-\$725	55'	BO 4Q15	Closings	0	0	0	0	0	0	0	0	0
			Housing Inv	0	0	0	0	0	0	0	0	0.0
			VDL Inv	0	0	0	0	0	0	0	0	0.0
Lakeside Center Town (103)	DNW-FlwrMnd	Starts	0	0	0	0	0	0	8	0	0	8
\$500-\$600	27'	Act 3Q21	Closings	0	0	0	0	0	0	0	0	0
			Housing Inv	0	0	0	0	0	8	8	8	n/a
			VDL Inv	0	0	0	0	0	0	0	0	0.0
Lakeside Crossing (169)	DNW-Lewisvl	Starts	0	0	0	0	0	0	0	0	0	0
\$0-\$0	25'	Future	Closings	0	0	0	0	0	0	0	0	0
			Housing Inv	0	0	0	0	0	0	0	0	0.0
			VDL Inv	0	0	0	0	0	0	0	0	0.0
Lakeside Crossing To (104)	DNW-FlwrMnd	Starts	0	0	5	0	0	4	0	0	0	4
\$660-\$765	32'	Act 3Q20	Closings	0	0	0	0	0	5	0	0	5
<i>Encore Luxury Homes Texas</i>			Housing Inv	0	0	5	5	5	9	4	4	9.6 mos
			VDL Inv	0	0	10	10	10	6	6	6	18.0 mos
Lakeside DFW (Flower) (85)	DNW-FlwrMnd	Starts	0	0	0	0	0	0	0	0	0	0
\$382-\$976	30'-65'	BO 4Q17	Closings	0	0	0	0	0	0	0	0	0
			Housing Inv	0	0	0	0	0	0	0	0	0.0
			VDL Inv	0	0	0	0	0	0	0	0	0.0

Dallas/Ft. Worth Residential Survey (1Q22)

Copyright Metrostudy

Page 15 of 31

metrstudy
A hanleywood Company

Sales: 1-800-227-8839

*Inventory Supply = Housing Inv/(Annual Closings/12)
Vacant Developed Lot Supply = VDL Inv/(Annual Starts/12)

N/A indicates Inventory is present but cannot calculate months of supply without starts or closings (see above).

Quarterly Activity & Inventory Report

Lewisville ISD

Sorted By Subdivision

Subdivision Name (Map No)	Sub Area	Status	1Q20	2Q20	3Q20	4Q20	1Q21	2Q21	3Q21	4Q21	1Q22	Ann. Rates/ *Inv. Supply
Lakeside Tower (91)	DNW-FlwrMnd	Starts	0	0	0	0	0	0	0	0	0	0
\$1152-\$3854	Act 2Q19	Closings	0	7	20	2	8	5	1	1	0	7
		Housing Inv	48	41	21	19	11	6	5	4	4	6.9 mos
		VDL Inv	0	0	0	0	0	0	0	0	0	0.0
Lakeside Village (101)	DNW-FlwrMnd	Starts	0	0	0	0	0	0	0	0	0	0
\$1000-\$1250	Act 4Q21	Closings	0	0	0	0	0	0	0	0	0	0
VanTrease Architectural Design		Housing Inv	0	0	0	0	0	0	0	0	0	0.0
		VDL Inv	0	0	0	0	0	0	0	57	57	n/a
Lakeside Villas (95)	DNW-FlwrMnd	Starts	0	0	0	0	0	0	0	0	0	0
\$650-\$750	Act 1Q22	Closings	0	0	0	0	0	0	0	0	0	0
		Housing Inv	0	0	0	0	0	0	0	0	0	0.0
		VDL Inv	0	0	0	0	0	0	0	0	7	n/a
Lakewood (Flower Mou (124)	DNW-FlwrMnd	Starts	0	0	0	0	0	0	0	0	0	0
\$0-\$0	Future	Closings	0	0	0	0	0	0	0	0	0	0
		Housing Inv	0	0	0	0	0	0	0	0	0	0.0
		VDL Inv	0	0	0	0	0	0	0	0	0	0.0
Lakewood Addition (H (87)	DNW-HighVil	Starts	0	0	0	0	0	0	0	0	0	0
\$270-\$350	BO 1Q00	Closings	0	0	0	0	0	0	0	0	0	0
		Housing Inv	0	0	0	0	0	0	0	0	0	0.0
		VDL Inv	0	0	0	0	0	0	0	0	0	0.0
Lakewood Hills Addit (277)	DNW-Lewisvl	Starts	5	5	6	10	4	13	33	25	18	89
\$400-\$679	Act 4Q17	Closings	31	10	11	3	9	4	7	4	10	25
Beazer Homes/Lennar Homes/Pulte		Housing Inv	22	17	12	19	14	23	49	70	78	37.4 mos
		VDL Inv	36	31	25	15	11	97	64	204	186	25.1 mos
Landing @ Northshore (9)	DNW-FlwrMnd	Starts	0	0	0	0	0	0	0	0	0	0
\$920-\$2800	BO 4Q18	Closings	0	0	0	0	0	0	0	0	0	0
		Housing Inv	0	0	0	0	0	0	0	0	0	0.0
		VDL Inv	0	0	0	0	0	0	0	0	0	0.0
Larry Ho Addition (193)	DNW-Lewisvl	Starts	0	0	0	0	0	0	0	0	0	0
\$0-\$0	Future	Closings	0	0	0	0	0	0	0	0	0	0
		Housing Inv	0	0	0	0	0	0	0	0	0	0.0
		VDL Inv	0	0	0	0	0	0	0	0	0	0.0
Legends, The (Colony (296)	DNW-Colony	Starts	0	0	0	0	0	0	0	0	0	0
\$136-\$252	BO 4Q06	Closings	0	0	0	0	0	0	0	0	0	0
		Housing Inv	0	0	0	0	0	0	0	0	0	0.0
		VDL Inv	0	0	0	0	0	0	0	0	0	0.0
Legends, The (Flower (59)	DNW-FlwrMnd	Starts	0	0	0	0	0	0	0	0	0	0
\$418-\$445	Act 1Q15	Closings	0	0	0	0	0	0	0	0	0	0
Village Builders		Housing Inv	0	0	0	0	0	0	0	0	0	0.0
		VDL Inv	1	1	1	1	1	1	1	1	1	n/a
Lexington Glen (144)	DNW-FlwrMnd	Starts	0	0	0	0	0	0	0	0	0	0
\$149-\$179	BO 2Q06	Closings	0	0	0	0	0	0	0	0	0	0
		Housing Inv	0	0	0	0	0	0	0	0	0	0.0
		VDL Inv	0	0	0	0	0	0	0	0	0	0.0

Dallas/Ft. Worth Residential Survey (1Q22)

Copyright Metrostudy

Page 16 of 31

metrstudy
A hanleywood Company

Sales: 1-800-227-8839

*Inventory Supply = Housing Inv/(Annual Closings/12)
Vacant Developed Lot Supply = VDL Inv/(Annual Starts/12)

N/A indicates Inventory is present but cannot calculate months of supply without starts or closings (see above).

Quarterly Activity & Inventory Report

Lewisville ISD

Sorted By Subdivision

Subdivision Name (Map No)	Sub Area	Status	1Q20	2Q20	3Q20	4Q20	1Q21	2Q21	3Q21	4Q21	1Q22	Ann. Rates/ *Inv. Supply	
Liberty Park (26) \$600-\$900 70'	DNW-FlwrMnd BO 4Q21	Starts	0	1	0	1	0	0	0	0	0	0	
		Closings	1	0	0	1	0	0	0	0	1	0	1
		Housing Inv	0	1	1	1	1	1	1	1	0	0	0.0
		VDL Inv	2	1	1	0	0	0	0	0	0	0	0.0
LISD Spinks Road (100) \$0-\$0 80'	DNW-FlwrMnd Future	Starts	0	0	0	0	0	0	0	0	0	0	
		Closings	0	0	0	0	0	0	0	0	0	0	0
		Housing Inv	0	0	0	0	0	0	0	0	0	0	0.0
		VDL Inv	0	0	0	0	0	0	0	0	0	0	0.0
MacArthur & 121 (223) \$0-\$0 25'	DNW-Lewisvl Future	Starts	0	0	0	0	0	0	0	0	0	0	
		Closings	0	0	0	0	0	0	0	0	0	0	0
		Housing Inv	0	0	0	0	0	0	0	0	0	0	0.0
		VDL Inv	0	0	0	0	0	0	0	0	0	0	0.0
Magnolia Court (131) \$623-\$725 80'	DNW-FlwrMnd BO 4Q21	Starts	0	0	0	4	12	13	0	0	0	0	13
		Closings	0	0	0	0	1	11	1	16	0	0	28
		Housing Inv	0	0	0	4	15	17	16	0	0	0	0.0
		VDL Inv	0	0	0	25	13	0	0	0	0	0	0.0
Magnolia Park (Flowe (31) \$693-\$800 85'	DNW-FlwrMnd BO 4Q18	Starts	0	0	0	0	0	0	0	0	0	0	
		Closings	0	0	0	0	0	0	0	0	0	0	0
		Housing Inv	0	0	0	0	0	0	0	0	0	0	0.0
		VDL Inv	0	0	0	0	0	0	0	0	0	0	0.0
Main Street Village (213) \$139-\$158 22'	DNW-Lewisvl BO 1Q08	Starts	0	0	0	0	0	0	0	0	0	0	
		Closings	0	0	0	0	0	0	0	0	0	0	0
		Housing Inv	0	0	0	0	0	0	0	0	0	0	0.0
		VDL Inv	0	0	0	0	0	0	0	0	0	0	0.0
Mallard Cove Estates (134) \$210-\$320 84'	DNW-FlwrMnd BO 3Q08	Starts	0	0	0	0	0	0	0	0	0	0	
		Closings	0	0	0	0	0	0	0	0	0	0	0
		Housing Inv	0	0	0	0	0	0	0	0	0	0	0.0
		VDL Inv	0	0	0	0	0	0	0	0	0	0	0.0
Manors at Forestbroo (211) \$335-\$390 26' <i>North American Land Company</i>	DNW-Lewisvl Act 4Q18	Starts	0	5	0	13	4	9	11	4	1	25	
		Closings	0	0	2	12	0	11	0	13	0	24	
		Housing Inv	18	23	21	22	26	24	35	26	27	13.5 mos	
		VDL Inv	93	88	88	75	71	62	51	47	46	22.1 mos	
Manors at Vista Ridg (224) \$320-\$360 28'	DNW-Lewisvl BO 1Q19	Starts	0	0	0	0	0	0	0	0	0	0	
		Closings	0	0	0	0	0	0	0	0	0	0	0
		Housing Inv	0	0	0	0	0	0	0	0	0	0	0.0
		VDL Inv	0	0	0	0	0	0	0	0	0	0	0.0
Meadow Lake (161) \$100-\$160 65'	DNW-Lewisvl BO 4Q01	Starts	0	0	0	0	0	0	0	0	0	0	
		Closings	0	0	0	0	0	0	0	0	0	0	0
		Housing Inv	0	0	0	0	0	0	0	0	0	0	0.0
		VDL Inv	0	0	0	0	0	0	0	0	0	0	0.0
Meridian (Lewisville (257) \$201-\$391 53'-80'	DNW-Lewisvl BO 1Q10	Starts	0	0	0	0	0	0	0	0	0	0	
		Closings	0	0	0	0	0	0	0	0	0	0	0
		Housing Inv	0	0	0	0	0	0	0	0	0	0	0.0
		VDL Inv	0	0	0	0	0	0	0	0	0	0	0.0

Dallas/Ft. Worth Residential Survey (1Q22)

Copyright Metrostudy

Page 17 of 31

metrstudy
A hanleywood Company

Sales: 1-800-227-8839

*Inventory Supply = Housing Inv/(Annual Closings/12)
Vacant Developed Lot Supply = VDL Inv/(Annual Starts/12)

N/A indicates Inventory is present but cannot calculate months of supply without starts or closings (see above).

Quarterly Activity & Inventory Report

Lewisville ISD

Sorted By Subdivision

Subdivision Name (Map No)	Sub Area	Status	1Q20	2Q20	3Q20	4Q20	1Q21	2Q21	3Q21	4Q21	1Q22	Ann. Rates/ *Inv. Supply	
Midway Park Addition (184) \$80-\$100 50'	DNW-Lewisvl BO 3Q05	Starts	0	0	0	0	0	0	0	0	0	0	
		Closings	0	0	0	0	0	0	0	0	0	0	
		Housing Inv	0	0	0	0	0	0	0	0	0	0	0.0
		VDL Inv	0	0	0	0	0	0	0	0	0	0	0.0
Milton Street Townho (191) \$140-\$210 25'	DNW-Lewisvl BO 2Q08	Starts	0	0	0	0	0	0	0	0	0	0	
		Closings	0	0	0	0	0	0	0	0	0	0	
		Housing Inv	0	0	0	0	0	0	0	0	0	0	0.0
		VDL Inv	0	0	0	0	0	0	0	0	0	0	0.0
Moore Farm (262) \$202-\$650 50'-70'	DNW-Carrlltn BO 1Q08	Starts	0	0	0	0	0	0	0	0	0	0	
		Closings	0	0	0	0	0	0	0	0	0	0	
		Housing Inv	0	0	0	0	0	0	0	0	0	0	0.0
		VDL Inv	0	0	0	0	0	0	0	0	0	0	0.0
Mustang Park (292) \$340-\$632 50'-80'	DNW-Carrlltn BO 2Q18	Starts	0	0	0	0	0	0	0	0	0	0	
		Closings	0	0	0	0	0	0	0	0	0	0	
		Housing Inv	0	0	0	0	0	0	0	0	0	0	0.0
		VDL Inv	0	0	0	0	0	0	0	0	0	0	0.0
Mustang Park Townhom (302) \$302-\$380 22'-35'	DNW-Carrlltn BO 4Q18	Starts	0	0	0	0	0	0	0	0	0	0	
		Closings	0	0	0	0	0	0	0	0	0	0	
		Housing Inv	0	0	0	0	0	0	0	0	0	0	0.0
		VDL Inv	0	0	0	0	0	0	0	0	0	0	0.0
Mustang Park/Latera (297) \$382-\$422 45'	DNW-Carrlltn BO 4Q20	Starts	9	6	0	0	0	0	0	0	0	0	
		Closings	11	3	16	1	0	0	0	0	0	0	
		Housing Inv	14	17	1	0	0	0	0	0	0	0	0.0
		VDL Inv	6	0	0	0	0	0	0	0	0	0	0.0
Myers Ridge (233) \$0-\$0 40'-50'	DNW-Lewisvl Future	Starts	0	0	0	0	0	0	0	0	0	0	
		Closings	0	0	0	0	0	0	0	0	0	0	
		Housing Inv	0	0	0	0	0	0	0	0	0	0	0.0
		VDL Inv	0	0	0	0	0	0	0	0	0	0	0.0
Normandy Estates (331) \$1250-\$2680 59'-110'	DNE-Plano Act 4Q08	Starts	1	0	0	4	0	2	2	2	2	8	
		Closings	1	2	3	2	0	6	1	1	0	8	
		Housing Inv	13	11	8	10	10	6	7	8	10	15.0 mos	
		VDL Inv	13	13	13	9	9	7	5	3	1	1.5 mos	
Normandy Estates Tow (322) \$430-\$470 40'	DNE-Plano BO 4Q16	Starts	0	0	0	0	0	0	0	0	0	0	
		Closings	0	0	0	0	0	0	0	0	0	0	
		Housing Inv	0	0	0	0	0	0	0	0	0	0	0.0
		VDL Inv	0	0	0	0	0	0	0	0	0	0	0.0
Normandy Village (179) \$449-\$479 25'	DNW-Lewisvl Act 4Q19	Starts	6	0	0	0	7	6	4	7	0	17	
		Closings	0	1	3	6	1	5	0	0	0	5	
		Housing Inv	17	16	13	7	13	14	18	25	25	60.0 mos	
		VDL Inv	0	65	65	65	58	52	48	41	41	28.9 mos	

Quarterly Activity & Inventory Report

Lewisville ISD

Sorted By Subdivision

Subdivision Name (Map No)	Sub Area	Status	1Q20	2Q20	3Q20	4Q20	1Q21	2Q21	3Q21	4Q21	1Q22	Ann. Rates/ *Inv. Supply	
North Shore Villas (189) \$144-\$195 50'-52'	DNW-Lewisvl BO 3Q13	Starts	0	0	0	0	0	0	0	0	0	0	
		Closings	0	0	0	0	0	0	0	0	0	0	
		Housing Inv	0	0	0	0	0	0	0	0	0	0	0.0
		VDL Inv	0	0	0	0	0	0	0	0	0	0	0.0
Oak Creek Estates (L (183)) \$150-\$155 100'	DNW-Lewisvl BO 2Q01	Starts	0	0	0	0	0	0	0	0	0	0	
		Closings	0	0	0	0	0	0	0	0	0	0	
		Housing Inv	0	0	0	0	0	0	0	0	0	0	0.0
		VDL Inv	0	0	0	0	0	0	0	0	0	0	0.0
Oak Park Addn (Flwr (136)) \$135-\$165 60'	DNW-FlwrMnd BO 2Q00	Starts	0	0	0	0	0	0	0	0	0	0	
		Closings	0	0	0	0	0	0	0	0	0	0	
		Housing Inv	0	0	0	0	0	0	0	0	0	0	0.0
		VDL Inv	0	0	0	0	0	0	0	0	0	0	0.0
Oakbend Estates (Lew (219)) \$450-\$550 30'	DNW-Lewisvl Act 1Q21	Starts	0	0	0	0	5	5	0	4	0	0	9
		Closings	0	0	0	0	0	0	3	2	0	0	5
		Housing Inv	0	0	0	0	5	10	7	9	9	9	21.6 mos
		VDL Inv	0	0	0	0	22	17	17	13	13	13	17.3 mos
Oakbridge at Flower (105) \$916-\$959 90' <i>Toll Brothers</i>	DNW-FlwrMnd Act 3Q17	Starts	0	7	7	8	0	7	7	0	1	15	
		Closings	1	3	5	11	0	10	5	7	5	5	27
		Housing Inv	15	19	21	18	18	15	17	10	6	6	2.7 mos
		VDL Inv	37	30	23	15	15	8	1	1	0	0	0.0
Oaks of Bellaire (159) \$117-\$178 70'-75'	DNW-Lewisvl BO 1Q01	Starts	0	0	0	0	0	0	0	0	0	0	
		Closings	0	0	0	0	0	0	0	0	0	0	
		Housing Inv	0	0	0	0	0	0	0	0	0	0	0.0
		VDL Inv	0	0	0	0	0	0	0	0	0	0	0.0
Oaks of Highland Vil (123) \$200-\$250 80'	DNW-HighVil BO 2Q00	Starts	0	0	0	0	0	0	0	0	0	0	
		Closings	0	0	0	0	0	0	0	0	0	0	
		Housing Inv	0	0	0	0	0	0	0	0	0	0	0.0
		VDL Inv	0	0	0	0	0	0	0	0	0	0	0.0
Oaks of the Southwes (192) \$160-\$175 25'	DNW-Lewisvl BO 4Q04	Starts	0	0	0	0	0	0	0	0	0	0	
		Closings	0	0	0	0	0	0	0	0	0	0	
		Housing Inv	0	0	0	0	0	0	0	0	0	0	0.0
		VDL Inv	0	0	0	0	0	0	0	0	0	0	0.0
One Place (126) \$93-\$110 40'	DNW-FlwrMnd BO 2Q00	Starts	0	0	0	0	0	0	0	0	0	0	
		Closings	0	0	0	0	0	0	0	0	0	0	
		Housing Inv	0	0	0	0	0	0	0	0	0	0	0.0
		VDL Inv	0	0	0	0	0	0	0	0	0	0	0.0
Orchard Flower (164) \$433-\$587 50'-60'	DNW-FlwrMnd BO 3Q21	Starts	5	3	2	10	0	1	0	0	0	1	
		Closings	3	1	9	8	1	15	4	0	0	0	19
		Housing Inv	22	24	17	19	18	4	0	0	0	0	0.0
		VDL Inv	16	13	11	1	1	0	0	0	0	0	0.0
Orchard Valley Estat (170) \$158-\$160 50'-55'	DNW-Lewisvl BO 4Q00	Starts	0	0	0	0	0	0	0	0	0	0	
		Closings	0	0	0	0	0	0	0	0	0	0	
		Housing Inv	0	0	0	0	0	0	0	0	0	0	0.0
		VDL Inv	0	0	0	0	0	0	0	0	0	0	0.0

Dallas/Ft. Worth Residential Survey (1Q22)

Copyright Metrostudy

Page 19 of 31

metrstudy
A hanleywood Company

Sales: 1-800-227-8839

*Inventory Supply = Housing Inv/(Annual Closings/12)
Vacant Developed Lot Supply = VDL Inv/(Annual Starts/12)

N/A indicates Inventory is present but cannot calculate months of supply without starts or closings (see above).

Quarterly Activity & Inventory Report

Lewisville ISD

Sorted By Subdivision

Subdivision Name (Map No)	Sub Area	Status	1Q20	2Q20	3Q20	4Q20	1Q21	2Q21	3Q21	4Q21	1Q22	Ann. Rates/ *Inv. Supply
Park Central Terrace (206)	DNW-Lewisvl	Starts	0	1	0	0	5	12	12	0	0	24
\$352-\$367	35'	Act 2Q20	Closings	0	0	0	0	0	4	5	1	10
Windsor Homes		Housing Inv	0	1	1	1	6	18	26	21	20	24.0 mos
		VDL Inv	0	30	30	30	25	13	1	1	1	0.5 mos
Parker Crossing (278)	DNW-Carrlltn	Starts	0	0	0	0	0	0	0	0	0	0
\$0-\$0	41'	Future	Closings	0	0	0	0	0	0	0	0	0
		Housing Inv	0	0	0	0	0	0	0	0	0	0.0
		VDL Inv	0	0	0	0	0	0	0	0	0	0.0
Parker Estates (Plan (306)	DNE-Plano	Starts	0	0	0	0	0	0	0	0	0	0
\$140-\$205	25'-35'	BO 3Q06	Closings	0	0	0	0	0	0	0	0	0
		Housing Inv	0	0	0	0	0	0	0	0	0	0.0
		VDL Inv	0	0	0	0	0	0	0	0	0	0.0
Parker Place (Lewisv (252)	DNW-Lewisvl	Starts	0	0	0	0	0	0	0	0	2	2
\$500-\$600	40'	Act 4Q21	Closings	0	0	0	0	0	0	0	0	0
David Weekley Homes		Housing Inv	0	0	0	0	0	0	0	0	2	n/a
		VDL Inv	0	0	0	0	0	0	0	130	128	768.0 mos
Parks at Austin Ranc (320)	DNW-Colony	Starts	0	0	0	0	0	0	0	0	0	0
\$250-\$255	25'	BO 1Q07	Closings	0	0	0	0	0	0	0	0	0
		Housing Inv	0	0	0	0	0	0	0	0	0	0.0
		VDL Inv	0	0	0	0	0	0	0	0	0	0.0
Parkside at Woodlake (86)	DNW-FlwrMnd	Starts	0	0	0	0	0	0	0	0	0	0
\$455-\$515	50'	BO 2Q18	Closings	0	0	0	0	0	0	0	0	0
		Housing Inv	0	0	0	0	0	0	0	0	0	0.0
		VDL Inv	0	0	0	0	0	0	0	0	0	0.0
Pebble Ridge Estates (146)	DNW-Lewisvl	Starts	0	0	0	0	0	0	0	0	0	0
\$171-\$183	60'	BO 3Q02	Closings	0	0	0	0	0	0	0	0	0
		Housing Inv	0	0	0	0	0	0	0	0	0	0.0
		VDL Inv	0	0	0	0	0	0	0	0	0	0.0
Pecan Meadows Additi (67)	DNW-FlwrMnd	Starts	0	0	0	0	0	0	0	0	0	0
\$272-\$315	106'	BO 4Q01	Closings	0	0	0	0	0	0	0	0	0
		Housing Inv	0	0	0	0	0	0	0	0	0	0.0
		VDL Inv	0	0	0	0	0	0	0	0	0	0.0
Peninsula @ Twin Cov (28)	DNW-FlwrMnd	Starts	0	0	0	0	0	0	0	0	0	0
\$250-\$570	120'-200'	BO 1Q01	Closings	0	0	0	0	0	0	0	0	0
		Housing Inv	0	0	0	0	0	0	0	0	0	0.0
		VDL Inv	0	0	0	0	0	0	0	0	0	0.0
Point Noble (19)	DNW-FlwrMnd	Starts	0	0	0	0	0	0	0	0	0	0
\$899-\$1600	156'	BO 2Q10	Closings	0	0	0	0	0	0	0	0	0
		Housing Inv	0	0	0	0	0	0	0	0	0	0.0
		VDL Inv	0	0	0	0	0	0	0	0	0	0.0
Preserve at Flower M (80)	DNW-FlwrMnd	Starts	0	0	0	0	0	0	0	0	0	0
\$574-\$765	81'	BO 2Q18	Closings	0	0	0	0	0	0	0	0	0
		Housing Inv	0	0	0	0	0	0	0	0	0	0.0
		VDL Inv	0	0	0	0	0	0	0	0	0	0.0

Quarterly Activity & Inventory Report

Lewisville ISD

Sorted By Subdivision

Subdivision Name (Map No)	Sub Area	Status	1Q20	2Q20	3Q20	4Q20	1Q21	2Q21	3Q21	4Q21	1Q22	Ann. Rates/ *Inv. Supply	
Preserve at Vista Ri (207) \$269-\$270 28'	DNW-Lewisvl BO 3Q15	Starts	0	0	0	0	0	0	0	0	0	0	
		Closings	0	0	0	0	0	0	0	0	0	0	
		Housing Inv	0	0	0	0	0	0	0	0	0	0	0.0
		VDL Inv	0	0	0	0	0	0	0	0	0	0	0.0
Prince Estates (15) \$450-\$1000 147'	DNW-FlwrMnd BO 4Q01	Starts	0	0	0	0	0	0	0	0	0	0	
		Closings	0	0	0	0	0	0	0	0	0	0	
		Housing Inv	0	0	0	0	0	0	0	0	0	0	0.0
		VDL Inv	0	0	0	0	0	0	0	0	0	0	0.0
Quail Creek North (270) \$196-\$310 25'-35'	DNW-Carrlltn BO 4Q13	Starts	0	0	0	0	0	0	0	0	0	0	
		Closings	0	0	0	0	0	0	0	0	0	0	
		Housing Inv	0	0	0	0	0	0	0	0	0	0	0.0
		VDL Inv	0	0	0	0	0	0	0	0	0	0	0.0
Quail Creek North To (269) \$176-\$182 25'	DNW-Carrlltn BO 2Q11	Starts	0	0	0	0	0	0	0	0	0	0	
		Closings	0	0	0	0	0	0	0	0	0	0	
		Housing Inv	0	0	0	0	0	0	0	0	0	0	0.0
		VDL Inv	0	0	0	0	0	0	0	0	0	0	0.0
Quail Creek Townhome (271) \$184-\$226 25'-35'	DNW-Carrlltn BO 3Q06	Starts	0	0	0	0	0	0	0	0	0	0	
		Closings	0	0	0	0	0	0	0	0	0	0	
		Housing Inv	0	0	0	0	0	0	0	0	0	0	0.0
		VDL Inv	0	0	0	0	0	0	0	0	0	0	0.0
Red Hawk Addition (46) \$0-\$0 40'	DNW-FlwrMnd Future	Starts	0	0	0	0	0	0	0	0	0	0	
		Closings	0	0	0	0	0	0	0	0	0	0	
		Housing Inv	0	0	0	0	0	0	0	0	0	0	0.0
		VDL Inv	0	0	0	0	0	0	0	0	0	0	0.0
Regency Park Additio (43) \$469-\$875 110'-118'	DNW-FlwrMnd BO 2Q18	Starts	0	0	0	0	0	0	0	0	0	0	
		Closings	0	0	0	0	0	0	0	0	0	0	
		Housing Inv	0	0	0	0	0	0	0	0	0	0	0.0
		VDL Inv	0	0	0	0	0	0	0	0	0	0	0.0
Reserve at Chapel Hi (65) \$787-\$882 65'-102' <i>David Weekley Homes</i>	DNW-HighVil Act 2Q21	Starts	0	0	0	0	0	1	17	14	16	48	
		Closings	0	0	0	0	0	0	0	1	6	7	
		Housing Inv	0	0	0	0	0	1	18	31	41	70.3 mos	
		VDL Inv	0	0	0	0	0	72	55	41	25	6.3 mos	
Reserve at Creekside (127) \$430-\$449 100'	DNW-FlwrMnd BO 4Q02	Starts	0	0	0	0	0	0	0	0	0	0	
		Closings	0	0	0	0	0	0	0	0	0	0	
		Housing Inv	0	0	0	0	0	0	0	0	0	0	0.0
		VDL Inv	0	0	0	0	0	0	0	0	0	0	0.0
Reserve at Timber Cr (174) \$220-\$227 75'	DNW-Lewisvl BO 3Q03	Starts	0	0	0	0	0	0	0	0	0	0	
		Closings	0	0	0	0	0	0	0	0	0	0	
		Housing Inv	0	0	0	0	0	0	0	0	0	0	0.0
		VDL Inv	0	0	0	0	0	0	0	0	0	0	0.0
Reserve on Parker (C (289)) \$407-\$414 45'	DNW-Carrlltn BO 2Q20	Starts	0	0	0	0	0	0	0	0	0	0	
		Closings	13	3	0	0	0	0	0	0	0	0	
		Housing Inv	3	0	0	0	0	0	0	0	0	0	0.0
		VDL Inv	0	0	0	0	0	0	0	0	0	0	0.0

Dallas/Ft. Worth Residential Survey (1Q22)

Copyright Metrostudy

Page 21 of 31

metrostudy
A hanleywood Company

Sales: 1-800-227-8839

*Inventory Supply = Housing Inv/(Annual Closings/12)
Vacant Developed Lot Supply = VDL Inv/(Annual Starts/12)

N/A indicates Inventory is present but cannot calculate months of supply without starts or closings (see above).

Quarterly Activity & Inventory Report

Lewisville ISD

Sorted By Subdivision

Subdivision Name (Map No)	Sub Area	Status	1Q20	2Q20	3Q20	4Q20	1Q21	2Q21	3Q21	4Q21	1Q22	Ann. Rates/ *Inv. Supply	
Reserve on Parker To (286) \$331-\$360 25'	DNW-Carrltn BO 2Q20	Starts	0	0	0	0	0	0	0	0	0	0	
		Closings	1	1	0	0	0	0	0	0	0	0	0
		Housing Inv	1	0	0	0	0	0	0	0	0	0	0.0
		VDL Inv	0	0	0	0	0	0	0	0	0	0	0.0
Ridge at Indian Cree (242) \$420-\$504 50'	DNW-Carrltn BO 4Q20	Starts	0	0	0	0	0	0	0	0	0	0	
		Closings	0	1	0	1	0	0	0	0	0	0	0
		Housing Inv	2	1	1	0	0	0	0	0	0	0	0.0
		VDL Inv	0	0	0	0	0	0	0	0	0	0	0.0
Ridgepointe (267) \$110-\$281 50'-70'	DNW-Colony BO 4Q03	Starts	0	0	0	0	0	0	0	0	0	0	
		Closings	0	0	0	0	0	0	0	0	0	0	0
		Housing Inv	0	0	0	0	0	0	0	0	0	0	0.0
		VDL Inv	0	0	0	0	0	0	0	0	0	0	0.0
Ridgeview Estates (L (155)) \$175-\$241 61'	DNW-Lewisvl BO 4Q05	Starts	0	0	0	0	0	0	0	0	0	0	
		Closings	0	0	0	0	0	0	0	0	0	0	0
		Housing Inv	0	0	0	0	0	0	0	0	0	0	0.0
		VDL Inv	0	0	0	0	0	0	0	0	0	0	0.0
River Oaks Estates (13) \$690-\$730 150'	DNW-FlwrMnd BO 4Q06	Starts	0	0	0	0	0	0	0	0	0	0	
		Closings	0	0	0	0	0	0	0	0	0	0	0
		Housing Inv	0	0	0	0	0	0	0	0	0	0	0.0
		VDL Inv	0	0	0	0	0	0	0	0	0	0	0.0
River Walk/Central P (108) \$644-\$669 40' Megatel Homes	DNW-FlwrMnd Act 2Q15	Starts	1	6	5	5	8	0	6	1	7	14	
		Closings	1	3	0	7	3	6	3	3	1	13	
		Housing Inv	10	13	18	16	21	15	18	16	22	20.3 mos	
		VDL Inv	39	33	28	23	15	15	9	8	1	0.9 mos	
River Walk/Lakeshore (102) \$489-\$650 22'-40' Mattamy Homes/Megatel Homes	DNW-FlwrMnd Act 1Q18	Starts	0	0	0	0	5	0	9	0	0	9	
		Closings	5	2	2	2	7	0	0	0	0	0	
		Housing Inv	14	12	10	8	6	6	15	15	15	n/a	
		VDL Inv	62	62	62	62	57	57	48	48	64	85.3 mos	
River Walk/Parkmont (99) \$403-\$471 30'	DNW-FlwrMnd BO 4Q20	Starts	6	0	0	0	0	0	0	0	0	0	
		Closings	1	7	8	2	0	0	0	0	0	0	0
		Housing Inv	17	10	2	0	0	0	0	0	0	0	0.0
		VDL Inv	0	0	0	0	0	0	0	0	0	0	0.0
River Walk/Pinnacle (109) \$329-\$339 25'	DNW-FlwrMnd BO 2Q21	Starts	1	0	0	0	0	0	0	0	0	0	
		Closings	3	4	9	10	0	3	0	0	0	0	3
		Housing Inv	26	22	13	3	3	0	0	0	0	0	0.0
		VDL Inv	0	0	0	0	0	0	0	0	0	0	0.0
River Walk/Riverside (107) \$383-\$386 25'	DNW-FlwrMnd BO 4Q20	Starts	0	0	0	0	0	0	0	0	0	0	
		Closings	0	0	0	11	0	0	0	0	0	0	0
		Housing Inv	11	11	11	0	0	0	0	0	0	0	0.0
		VDL Inv	0	0	0	0	0	0	0	0	0	0	0.0
Rock Creek Townhomes (293) \$0-\$0 25'	DNE-Frisco Future	Starts	0	0	0	0	0	0	0	0	0	0	
		Closings	0	0	0	0	0	0	0	0	0	0	0
		Housing Inv	0	0	0	0	0	0	0	0	0	0	0.0
		VDL Inv	0	0	0	0	0	0	0	0	0	0	0.0

Dallas/Ft. Worth Residential Survey (1Q22)

Copyright Metrostudy

Page 22 of 31

metrstudy
A hanleywood Company

Sales: 1-800-227-8839

*Inventory Supply = Housing Inv/(Annual Closings/12)
Vacant Developed Lot Supply = VDL Inv/(Annual Starts/12)

N/A indicates Inventory is present but cannot calculate months of supply without starts or closings (see above).

Quarterly Activity & Inventory Report

Lewisville ISD

Sorted By Subdivision

Subdivision Name (Map No)	Sub Area	Status	1Q20	2Q20	3Q20	4Q20	1Q21	2Q21	3Q21	4Q21	1Q22	Ann. Rates/ *Inv. Supply	
Rockbrook Place Addi (221) \$180-\$186 26'	DNW-Lewisvl BO 2Q13	Starts	0	0	0	0	0	0	0	0	0	0	
		Closings	0	0	0	0	0	0	0	0	0	0	
		Housing Inv	0	0	0	0	0	0	0	0	0	0	0.0
		VDL Inv	0	0	0	0	0	0	0	0	0	0	0.0
Rockhaven Estates (37) \$700-\$1200 150'	DNW-FlwrMnd BO 4Q21	Starts	0	0	0	0	0	0	0	0	0	0	
		Closings	0	0	0	0	0	0	0	1	0	0	1
		Housing Inv	1	1	1	1	1	1	1	1	0	0	0.0
		VDL Inv	0	0	0	0	0	0	0	0	0	0	0.0
Rolling Hills Estate (69) \$221-\$370 65'	DNW-HighVil BO 2Q06	Starts	0	0	0	0	0	0	0	0	0	0	
		Closings	0	0	0	0	0	0	0	0	0	0	0
		Housing Inv	0	0	0	0	0	0	0	0	0	0	0.0
		VDL Inv	0	0	0	0	0	0	0	0	0	0	0.0
Rosalie Estates (121) \$150-\$279 130'	DNW-HighVil BO 4Q00	Starts	0	0	0	0	0	0	0	0	0	0	
		Closings	0	0	0	0	0	0	0	0	0	0	0
		Housing Inv	0	0	0	0	0	0	0	0	0	0	0.0
		VDL Inv	0	0	0	0	0	0	0	0	0	0	0.0
Saddle Oaks Addition (29) \$570-\$600 150'	DNW-FlwrMnd BO 2Q07	Starts	0	0	0	0	0	0	0	0	0	0	
		Closings	0	0	0	0	0	0	0	0	0	0	0
		Housing Inv	0	0	0	0	0	0	0	0	0	0	0.0
		VDL Inv	0	0	0	0	0	0	0	0	0	0	0.0
Saddle Ridge (Carrol (281) \$400-\$443 45'	DNW-Carrlltn BO 2Q21	Starts	18	7	9	6	1	0	0	0	0	0	
		Closings	8	13	9	10	11	3	0	0	0	0	3
		Housing Inv	23	17	17	13	3	0	0	0	0	0	0.0
		VDL Inv	23	16	7	1	0	0	0	0	0	0	0.0
Saddlewood (Flower M (27) \$989-\$1046 120' <i>Bud Bartley Homes/Victor Myers Custom Homes</i>	DNW-FlwrMnd Act 4Q15	Starts	0	0	0	1	0	0	2	1	1	4	
		Closings	0	0	4	0	0	0	0	4	0	4	
		Housing Inv	5	5	1	2	2	2	4	1	2	6.0 mos	
		VDL Inv	7	7	7	6	6	6	4	3	2	6.0 mos	
Samuel Place (149) \$175-\$220 65'	DNW-Lewisvl BO 2Q07	Starts	0	0	0	0	0	0	0	0	0	0	
		Closings	0	0	0	0	0	0	0	0	0	0	0
		Housing Inv	0	0	0	0	0	0	0	0	0	0	0.0
		VDL Inv	0	0	0	0	0	0	0	0	0	0	0.0
Sanctuary at Flower (63) \$449-\$598 100'	DNW-FlwrMnd BO 3Q08	Starts	0	0	0	0	0	0	0	0	0	0	
		Closings	0	0	0	0	0	0	0	0	0	0	0
		Housing Inv	0	0	0	0	0	0	0	0	0	0	0.0
		VDL Inv	0	0	0	0	0	0	0	0	0	0	0.0
Serenity (Flower Mou (3) \$0-\$0 80'	DNW-FlwrMnd Future	Starts	0	0	0	0	0	0	0	0	0	0	
		Closings	0	0	0	0	0	0	0	0	0	0	0
		Housing Inv	0	0	0	0	0	0	0	0	0	0	0.0
		VDL Inv	0	0	0	0	0	0	0	0	0	0	0.0
Settler's Village To (222) \$209-\$217 20'	DNW-Lewisvl BO 1Q15	Starts	0	0	0	0	0	0	0	0	0	0	
		Closings	0	0	0	0	0	0	0	0	0	0	0
		Housing Inv	0	0	0	0	0	0	0	0	0	0	0.0
		VDL Inv	0	0	0	0	0	0	0	0	0	0	0.0

Dallas/Ft. Worth Residential Survey (1Q22)

Copyright Metrostudy

Page 23 of 31

metrstudy
A hanleywood Company

Sales: 1-800-227-8839

*Inventory Supply = Housing Inv/(Annual Closings/12)
Vacant Developed Lot Supply = VDL Inv/(Annual Starts/12)

N/A indicates Inventory is present but cannot calculate months of supply without starts or closings (see above).

Quarterly Activity & Inventory Report

Lewisville ISD

Sorted By Subdivision

Subdivision Name (Map No)	Sub Area	Status	1Q20	2Q20	3Q20	4Q20	1Q21	2Q21	3Q21	4Q21	1Q22	Ann. Rates/ *Inv. Supply	
Shiloh Ranch Estates (6) \$173-\$178 280'	DNW-FlwrMnd BO 2Q03	Starts	0	0	0	0	0	0	0	0	0	0	
		Closings	0	0	0	0	0	0	0	0	0	0	
		Housing Inv	0	0	0	0	0	0	0	0	0	0	0.0
		VDL Inv	0	0	0	0	0	0	0	0	0	0	0.0
Shoal Creek (329) \$268-\$2000 50'-100'	DNE-Plano BO 2Q10	Starts	0	0	0	0	0	0	0	0	0	0	
		Closings	0	0	0	0	0	0	0	0	0	0	
		Housing Inv	0	0	0	0	0	0	0	0	0	0	0.0
		VDL Inv	0	0	0	0	0	0	0	0	0	0	0.0
Shops at Prestonwood (309) \$269-\$560 22'-28'	DNW-Carrltn BO 2Q19	Starts	0	0	0	0	0	0	0	0	0	0	
		Closings	0	0	0	0	0	0	0	0	0	0	
		Housing Inv	0	0	0	0	0	0	0	0	0	0	0.0
		VDL Inv	0	0	0	0	0	0	0	0	0	0	0.0
Simple Oaks Estates (22) \$200-\$500 176'	DNW-DOak BO 2Q17	Starts	0	0	0	0	0	0	0	0	0	0	
		Closings	0	0	0	0	0	0	0	0	0	0	
		Housing Inv	0	0	0	0	0	0	0	0	0	0	0.0
		VDL Inv	0	0	0	0	0	0	0	0	0	0	0.0
Sojourn at the Realm (260) \$299-\$407	DNW-Lewisvl BO 1Q22	Starts	0	0	0	0	0	0	0	0	0	0	
		Closings	0	0	5	7	7	16	22	21	2	2	61
		Housing Inv	80	80	75	68	61	45	23	2	0	0	0.0
		VDL Inv	0	0	0	0	0	0	0	0	0	0	0.0
South Village Additi (200) \$329-\$380 24'-44' <i>Crescent Estates Custom Homes</i>	DNW-Lewisvl Act 4Q17	Starts	7	0	2	15	7	2	0	1	0	0	3
		Closings	2	2	3	2	0	1	9	19	0	0	29
		Housing Inv	10	8	7	20	27	28	19	1	1	1	0.4 mos
		VDL Inv	33	33	31	16	9	7	7	6	6	6	24.0 mos
Southridge Addition (187) \$146-\$189 60'-61'	DNW-Lewisvl BO 2Q00	Starts	0	0	0	0	0	0	0	0	0	0	
		Closings	0	0	0	0	0	0	0	0	0	0	
		Housing Inv	0	0	0	0	0	0	0	0	0	0	0.0
		VDL Inv	0	0	0	0	0	0	0	0	0	0	0.0
Sparkman Estates (215) \$235-\$240 30'	DNW-Lewisvl BO 2Q08	Starts	0	0	0	0	0	0	0	0	0	0	
		Closings	0	0	0	0	0	0	0	0	0	0	
		Housing Inv	0	0	0	0	0	0	0	0	0	0	0.0
		VDL Inv	0	0	0	0	0	0	0	0	0	0	0.0
St. James Place (71) \$255-\$330 65' <i>Century Custom Homes/Sundance Builders</i>	DNW-HighVil Act 3Q09	Starts	0	0	0	1	0	0	0	2	0	0	2
		Closings	0	0	0	0	0	0	0	0	1	0	1
		Housing Inv	0	0	0	1	1	1	1	3	2	2	24.0 mos
		VDL Inv	3	3	3	2	2	2	2	0	0	0	0.0
Stafford Estates (56) \$226-\$311 75'-85'	DNW-FlwrMnd BO 2Q00	Starts	0	0	0	0	0	0	0	0	0	0	
		Closings	0	0	0	0	0	0	0	0	0	0	
		Housing Inv	0	0	0	0	0	0	0	0	0	0	0.0
		VDL Inv	0	0	0	0	0	0	0	0	0	0	0.0
Stewart Peninsula/Co (250) \$142-\$280 55'	DNW-Colony BO 1Q04	Starts	0	0	0	0	0	0	0	0	0	0	
		Closings	0	0	0	0	0	0	0	0	0	0	
		Housing Inv	0	0	0	0	0	0	0	0	0	0	0.0
		VDL Inv	0	0	0	0	0	0	0	0	0	0	0.0

Dallas/Ft. Worth Residential Survey (1Q22)

Copyright Metrostudy

Page 24 of 31

metrstudy
A hanleywood Company

Sales: 1-800-227-8839

*Inventory Supply = Housing Inv/(Annual Closings/12)
Vacant Developed Lot Supply = VDL Inv/(Annual Starts/12)

N/A indicates Inventory is present but cannot calculate months of supply without starts or closings (see above).

Quarterly Activity & Inventory Report

Lewisville ISD

Sorted By Subdivision

Subdivision Name (Map No)	Sub Area	Status	1Q20	2Q20	3Q20	4Q20	1Q21	2Q21	3Q21	4Q21	1Q22	Ann. Rates/ *Inv. Supply	
Stewart Peninsula/Cy (248) \$285-\$423 50'-60'	DNW-Colony BO 4Q09	Starts	0	0	0	0	0	0	0	0	0	0	
		Closings	0	0	0	0	0	0	0	0	0	0	0
		Housing Inv	0	0	0	0	0	0	0	0	0	0	0.0
		VDL Inv	0	0	0	0	0	0	0	0	0	0	0.0
Stewart Peninsula/He (251) \$163-\$209 55'-65'	DNW-Colony BO 3Q03	Starts	0	0	0	0	0	0	0	0	0	0	
		Closings	0	0	0	0	0	0	0	0	0	0	0
		Housing Inv	0	0	0	0	0	0	0	0	0	0	0.0
		VDL Inv	0	0	0	0	0	0	0	0	0	0	0.0
Stewart Peninsula/No (249) \$400-\$769 55'-85'	DNW-Colony BO 2Q10	Starts	0	0	0	0	0	0	0	0	0	0	
		Closings	0	0	0	0	0	0	0	0	0	0	0
		Housing Inv	0	0	0	0	0	0	0	0	0	0	0.0
		VDL Inv	0	0	0	0	0	0	0	0	0	0	0.0
Stewart Peninsula/Th (253) \$143-\$189 55'-62'	DNW-Colony BO 4Q02	Starts	0	0	0	0	0	0	0	0	0	0	
		Closings	0	0	0	0	0	0	0	0	0	0	0
		Housing Inv	0	0	0	0	0	0	0	0	0	0	0.0
		VDL Inv	0	0	0	0	0	0	0	0	0	0	0.0
Stone Hill Farm (120) \$181-\$247 70'-84'	DNW-FlwrMnd BO 3Q02	Starts	0	0	0	0	0	0	0	0	0	0	
		Closings	0	0	0	0	0	0	0	0	0	0	0
		Housing Inv	0	0	0	0	0	0	0	0	0	0	0.0
		VDL Inv	0	0	0	0	0	0	0	0	0	0	0.0
Stonebriar (335) \$250-\$2700 50'-110'	DNE-Frisco BO 1Q11	Starts	0	0	0	0	0	0	0	0	0	0	
		Closings	0	0	0	0	0	0	0	0	0	0	0
		Housing Inv	0	0	0	0	0	0	0	0	0	0	0.0
		VDL Inv	0	0	0	0	0	0	0	0	0	0	0.0
Stonebriar Country C (318) \$849-\$1900 90' Parthenon Custom Homes	DNE-Frisco Act 2Q01	Starts	0	0	0	0	0	0	0	0	0	0	
		Closings	0	0	0	0	0	0	0	0	0	0	0
		Housing Inv	0	0	0	0	0	0	0	0	0	0	0.0
		VDL Inv	4	4	4	4	4	4	4	4	4	4	n/a
Suncrest @ Flower Mo (133) \$240-\$398 55'-80'	DNW-FlwrMnd BO 4Q13	Starts	0	0	0	0	0	0	0	0	0	0	
		Closings	0	0	0	0	0	0	0	0	0	0	0
		Housing Inv	0	0	0	0	0	0	0	0	0	0	0.0
		VDL Inv	0	0	0	0	0	0	0	0	0	0	0.0
Sunset Point at Twin (35) \$1100-\$1300 80' Bud Bartley Homes	DNW-FlwrMnd Act 4Q21	Starts	0	0	0	0	0	0	0	0	2	2	
		Closings	0	0	0	0	0	0	0	0	0	0	0
		Housing Inv	0	0	0	0	0	0	0	0	0	2	n/a
		VDL Inv	0	0	0	0	0	0	0	0	18	16	96.0 mos
Surrey Lane Addition (94) \$700-\$800 90'	DNW-FlwrMnd BO 4Q16	Starts	0	0	0	0	0	0	0	0	0	0	
		Closings	0	0	0	0	0	0	0	0	0	0	0
		Housing Inv	0	0	0	0	0	0	0	0	0	0	0.0
		VDL Inv	0	0	0	0	0	0	0	0	0	0	0.0
Tequesta (119) \$499-\$556 60' Bud Bartley Homes	DNW-HighVil Act 2Q20	Starts	0	0	4	4	0	0	2	0	1	3	
		Closings	0	0	0	1	2	0	5	0	1	6	
		Housing Inv	0	0	4	7	5	5	2	2	2	4.0 mos	
		VDL Inv	0	11	7	3	3	3	1	1	0	0.0	

Dallas/Ft. Worth Residential Survey (1Q22)

Copyright Metrostudy

Page 25 of 31

metrstudy
A hanleywood Company

Sales: 1-800-227-8839

*Inventory Supply = Housing Inv/(Annual Closings/12)
Vacant Developed Lot Supply = VDL Inv/(Annual Starts/12)

N/A indicates Inventory is present but cannot calculate months of supply without starts or closings (see above).

Quarterly Activity & Inventory Report

Lewisville ISD

Sorted By Subdivision

Subdivision Name (Map No)	Sub Area	Status	1Q20	2Q20	3Q20	4Q20	1Q21	2Q21	3Q21	4Q21	1Q22	Ann. Rates/ *Inv. Supply	
Terracina (Flower Mo (55))	DNW-FlwrMnd	Starts	9	8	6	5	1	0	0	0	0	0	
\$695-\$771	100'	Act 3Q12	Closings	2	4	7	7	4	11	2	1	0	14
<i>Toll Brothers</i>		Housing Inv	17	21	20	18	15	4	2	1	1	1	0.9 mos
		VDL Inv	21	13	7	2	1	1	1	1	1	1	n/a
The Corvalla at Ston (334)	DNE-Frisco	Starts	0	0	0	0	0	0	0	0	0	0	0
\$525-\$2000		Act 1Q18	Closings	0	0	13	5	3	1	3	2	0	6
<i>Robert Elliott Custom Homes</i>		Housing Inv	29	29	16	11	8	7	4	2	2	2	4.0 mos
		VDL Inv	0	0	0	0	0	0	0	0	0	0	0.0
Three Bridges Estate (68)	DNW-FlwrMnd	Starts	0	0	0	0	0	0	0	0	0	0	0
\$800-\$1000	258'	Act 2Q05	Closings	0	0	0	0	0	0	0	0	0	0
		Housing Inv	0	0	0	0	0	0	0	0	0	0	0.0
		VDL Inv	2	2	2	2	2	2	2	2	2	2	n/a
Timber Creek Park Es (185)	DNW-Lewisvl	Starts	0	0	0	0	0	0	0	0	0	0	0
\$112-\$160	61'	BO 4Q01	Closings	0	0	0	0	0	0	0	0	0	0
		Housing Inv	0	0	0	0	0	0	0	0	0	0	0.0
		VDL Inv	0	0	0	0	0	0	0	0	0	0	0.0
Timber Creek Willows (205)	DNW-Lewisvl	Starts	0	0	0	0	0	0	0	0	0	0	0
\$0-\$0	25'	Future	Closings	0	0	0	0	0	0	0	0	0	0
		Housing Inv	0	0	0	0	0	0	0	0	0	0	0.0
		VDL Inv	0	0	0	0	0	0	0	0	0	0	0.0
Timber Hill Addition (195)	DNW-Lewisvl	Starts	0	0	0	0	0	0	0	0	0	0	0
\$135-\$185	53'	BO 3Q00	Closings	0	0	0	0	0	0	0	0	0	0
		Housing Inv	0	0	0	0	0	0	0	0	0	0	0.0
		VDL Inv	0	0	0	0	0	0	0	0	0	0	0.0
Timber Valley Estate (188)	DNW-Lewisvl	Starts	0	0	0	0	0	0	0	0	0	0	0
\$90-\$128	40'-67'	BO 2Q00	Closings	0	0	0	0	0	0	0	0	0	0
		Housing Inv	0	0	0	0	0	0	0	0	0	0	0.0
		VDL Inv	0	0	0	0	0	0	0	0	0	0	0.0
Tinley Park (160)	DNW-FlwrMnd	Starts	0	1	4	0	13	10	3	3	1	1	17
\$635-\$635	50'-100'	Act 2Q20	Closings	0	0	0	0	1	2	8	15	2	27
<i>Darling Homes</i>		Housing Inv	0	1	5	5	17	25	20	8	7	7	3.1 mos
		VDL Inv	0	34	30	30	17	7	4	1	0	0	0.0
Town Lake at Flower (24)	DNW-FlwrMnd	Starts	2	9	16	4	11	1	11	11	3	3	26
\$1417-\$1532	100'-120'	Act 1Q17	Closings	11	4	3	11	6	8	7	3	9	27
<i>Toll Brothers</i>		Housing Inv	10	15	28	21	26	19	23	31	25	25	11.1 mos
		VDL Inv	28	33	17	13	58	57	46	35	32	32	14.8 mos
Towne View Estates (92)	DNW-FlwrMnd	Starts	0	0	0	0	0	0	0	0	0	0	0
\$260-\$322	80'-97'	BO 2Q02	Closings	0	0	0	0	0	0	0	0	0	0
		Housing Inv	0	0	0	0	0	0	0	0	0	0	0.0
		VDL Inv	0	0	0	0	0	0	0	0	0	0	0.0
Townhomes @ Continen (204)	DNW-Lewisvl	Starts	0	0	0	0	0	0	0	0	0	0	0
\$158-\$220	24'	BO 4Q17	Closings	0	0	0	0	0	0	0	0	0	0
		Housing Inv	0	0	0	0	0	0	0	0	0	0	0.0
		VDL Inv	0	0	0	0	0	0	0	0	0	0	0.0

Dallas/Ft. Worth Residential Survey (1Q22)

Copyright Metrostudy

Page 26 of 31

metrstudy
A hanleywood Company

Sales: 1-800-227-8839

*Inventory Supply = Housing Inv/(Annual Closings/12)
Vacant Developed Lot Supply = VDL Inv/(Annual Starts/12)

N/A indicates Inventory is present but cannot calculate months of supply without starts or closings (see above).

Quarterly Activity & Inventory Report

Lewisville ISD

Sorted By Subdivision

Subdivision Name (Map No)	Sub Area	Price Range	Lot Size	Status	1Q20	2Q20	3Q20	4Q20	1Q21	2Q21	3Q21	4Q21	1Q22	Ann. Rates/ *Inv. Supply	
Townhomes of Vista R (218) \$179-\$189 25'	DNW-Lewisvl BO 2Q10	Starts			0	0	0	0	0	0	0	0	0	0	
		Closings			0	0	0	0	0	0	0	0	0	0	0
		Housing Inv			0	0	0	0	0	0	0	0	0	0	0.0
		VDL Inv			0	0	0	0	0	0	0	0	0	0	0.0
Traditions of Flower (66) \$0-\$0 107'	DNW-FlwrMnd Future	Starts			0	0	0	0	0	0	0	0	0	0	
		Closings			0	0	0	0	0	0	0	0	0	0	0
		Housing Inv			0	0	0	0	0	0	0	0	0	0	0.0
		VDL Inv			0	0	0	0	0	0	0	0	0	0	0.0
Trails at Arbor Hill (294) \$394-\$595 50'	DNW-Carrltn BO 4Q20	Starts			8	2	1	1	0	0	0	0	0	0	
		Closings			8	2	7	2	0	0	0	0	0	0	0
		Housing Inv			7	7	1	0	0	0	0	0	0	0	0.0
		VDL Inv			4	2	1	0	0	0	0	0	0	0	0.0
Trinity Townhomes (L (216) \$0-\$0 17'	DNW-Lewisvl Future	Starts			0	0	0	0	0	0	0	0	0	0	
		Closings			0	0	0	0	0	0	0	0	0	0	0
		Housing Inv			0	0	0	0	0	0	0	0	0	0	0.0
		VDL Inv			0	0	0	0	0	0	0	0	0	0	0.0
Twin Lakes Estates (30) \$400-\$500 100'	DNW-DOak BO 3Q03	Starts			0	0	0	0	0	0	0	0	0	0	
		Closings			0	0	0	0	0	0	0	0	0	0	0
		Housing Inv			0	0	0	0	0	0	0	0	0	0	0.0
		VDL Inv			0	0	0	0	0	0	0	0	0	0	0.0
Uptown Village (208) \$295-\$330 23'	DNW-Lewisvl BO 3Q21	Starts			0	0	0	5	0	0	0	0	0	0	
		Closings			1	0	0	0	1	0	5	0	0	0	5
		Housing Inv			1	1	1	6	5	5	0	0	0	0	0.0
		VDL Inv			5	5	5	0	0	0	0	0	0	0	0.0
Valley View Addition (182) \$94-\$175 65'	DNW-Lewisvl BO 2Q01	Starts			0	0	0	0	0	0	0	0	0	0	
		Closings			0	0	0	0	0	0	0	0	0	0	0
		Housing Inv			0	0	0	0	0	0	0	0	0	0	0.0
		VDL Inv			0	0	0	0	0	0	0	0	0	0	0.0
Valley Vista Estates (180) \$118-\$225 66'-100'	DNW-Lewisvl BO 2Q00	Starts			0	0	0	0	0	0	0	0	0	0	
		Closings			0	0	0	0	0	0	0	0	0	0	0
		Housing Inv			0	0	0	0	0	0	0	0	0	0	0.0
		VDL Inv			0	0	0	0	0	0	0	0	0	0	0.0
Vassar Court (332) \$0-\$0 30'	DNW-Colony Future	Starts			0	0	0	0	0	0	0	0	0	0	
		Closings			0	0	0	0	0	0	0	0	0	0	0
		Housing Inv			0	0	0	0	0	0	0	0	0	0	0.0
		VDL Inv			0	0	0	0	0	0	0	0	0	0	0.0
Verona Addition (Lew (166) \$306-\$348 50'	DNW-Lewisvl BO 4Q17	Starts			0	0	0	0	0	0	0	0	0	0	
		Closings			0	0	0	0	0	0	0	0	0	0	0
		Housing Inv			0	0	0	0	0	0	0	0	0	0	0.0
		VDL Inv			0	0	0	0	0	0	0	0	0	0	0.0
Vickery (32) \$740-\$1361 John R Landon Distinction/Toll Brothers	DNW-CCanyon Act 1Q21	Starts			0	0	0	0	0	3	14	24	22	63	
		Closings			0	0	0	0	0	0	0	0	1	1	
		Housing Inv			0	0	0	0	0	3	17	41	62	744.0 mos	
		VDL Inv			0	0	0	0	99	123	131	134	112	21.3 mos	

Dallas/Ft. Worth Residential Survey (1Q22)

Copyright Metrostudy

Page 27 of 31

metrstudy
A hanleywood Company

Sales: 1-800-227-8839

*Inventory Supply = Housing Inv/(Annual Closings/12)
Vacant Developed Lot Supply = VDL Inv/(Annual Starts/12)

N/A indicates Inventory is present but cannot calculate months of supply without starts or closings (see above).

Quarterly Activity & Inventory Report

Lewisville ISD

Sorted By Subdivision

Subdivision Name (Map No)	Sub Area	Status	1Q20	2Q20	3Q20	4Q20	1Q21	2Q21	3Q21	4Q21	1Q22	Ann. Rates/ *Inv. Supply	
Vilamoura (53) \$600-\$800 72'	DNW-FlwrMnd BO 4Q17	Starts	0	0	0	0	0	0	0	0	0	0	
		Closings	0	0	0	0	0	0	0	0	0	0	
		Housing Inv	0	0	0	0	0	0	0	0	0	0	0.0
		VDL Inv	0	0	0	0	0	0	0	0	0	0	0.0
Village at Lewisville (167) \$0-\$0 20'	DNW-Lewisvl Future	Starts	0	0	0	0	0	0	0	0	0	0	
		Closings	0	0	0	0	0	0	0	0	0	0	
		Housing Inv	0	0	0	0	0	0	0	0	0	0	0.0
		VDL Inv	0	0	0	0	0	0	0	0	0	0	0.0
Village at Prestonwo (312) \$200-\$241 40'-50'	DNE-Plano BO 2Q11	Starts	0	0	0	0	0	0	0	0	0	0	
		Closings	0	0	0	0	0	0	0	0	0	0	
		Housing Inv	0	0	0	0	0	0	0	0	0	0	0.0
		VDL Inv	0	0	0	0	0	0	0	0	0	0	0.0
Village at the Point (283) \$360-\$360 26'	DNW-Colony BO 3Q20	Starts	0	0	0	0	0	0	0	0	0	0	
		Closings	7	6	16	0	0	0	0	0	0	0	
		Housing Inv	22	16	0	0	0	0	0	0	0	0	0.0
		VDL Inv	0	0	0	0	0	0	0	0	0	0	0.0
Village Townhomes (300) \$0-\$0 30'	DNW-Colony Future	Starts	0	0	0	0	0	0	0	0	0	0	
		Closings	0	0	0	0	0	0	0	0	0	0	
		Housing Inv	0	0	0	0	0	0	0	0	0	0	0.0
		VDL Inv	0	0	0	0	0	0	0	0	0	0	0.0
Villages of Indian C (239) \$130-\$165 40'-50'	DNW-Carrltn BO 1Q03	Starts	0	0	0	0	0	0	0	0	0	0	
		Closings	0	0	0	0	0	0	0	0	0	0	
		Housing Inv	0	0	0	0	0	0	0	0	0	0	0.0
		VDL Inv	0	0	0	0	0	0	0	0	0	0	0.0
Villages of Northsho (84) \$232-\$260 68'-94'	DNW-FlwrMnd BO 3Q00	Starts	0	0	0	0	0	0	0	0	0	0	
		Closings	0	0	0	0	0	0	0	0	0	0	
		Housing Inv	0	0	0	0	0	0	0	0	0	0	0.0
		VDL Inv	0	0	0	0	0	0	0	0	0	0	0.0
Villas at Indian Cre (240) \$250-\$289 40'	DNW-Carrltn BO 4Q13	Starts	0	0	0	0	0	0	0	0	0	0	
		Closings	0	0	0	0	0	0	0	0	0	0	
		Housing Inv	0	0	0	0	0	0	0	0	0	0	0.0
		VDL Inv	0	0	0	0	0	0	0	0	0	0	0.0
Villas at Lake Vista (225) \$260-\$333 30'	DNW-Coppell BO 2Q14	Starts	0	0	0	0	0	0	0	0	0	0	
		Closings	0	0	0	0	0	0	0	0	0	0	
		Housing Inv	0	0	0	0	0	0	0	0	0	0	0.0
		VDL Inv	0	0	0	0	0	0	0	0	0	0	0.0
Villas at Parker (304) \$379-\$400 45'	DNW-Carrltn BO 4Q20	Starts	5	2	0	0	0	0	0	0	0	0	
		Closings	5	8	3	1	0	0	0	0	0	0	
		Housing Inv	10	4	1	0	0	0	0	0	0	0	0.0
		VDL Inv	2	0	0	0	0	0	0	0	0	0	0.0
Villas at Southgate (129) \$510-\$549 Normandy Homes 30'	DNW-FlwrMnd Act 3Q18	Starts	10	14	7	14	14	17	1	3	11	32	
		Closings	8	7	26	10	7	3	18	4	8	33	
		Housing Inv	22	29	10	14	21	35	18	17	20	7.3 mos	
		VDL Inv	84	70	63	49	35	18	17	14	3	1.1 mos	

Dallas/Ft. Worth Residential Survey (1Q22)

Copyright Metrostudy

Page 28 of 31

metrstudy
A hanleywood Company

Sales: 1-800-227-8839

*Inventory Supply = Housing Inv/(Annual Closings/12)
Vacant Developed Lot Supply = VDL Inv/(Annual Starts/12)

N/A indicates Inventory is present but cannot calculate months of supply without starts or closings (see above).

Quarterly Activity & Inventory Report

Lewisville ISD

Sorted By Subdivision

Subdivision Name (Map No)	Sub Area	Price Range	Lot Size	Status	1Q20	2Q20	3Q20	4Q20	1Q21	2Q21	3Q21	4Q21	1Q22	Ann. Rates/ *Inv. Supply	
Villas at Southgate (132) \$377-\$570 22' CB Jeni Homes	DNW-FlwrMnd Act 3Q18	Starts	18	7	11	0	32	20	7	11	13			51	
		Closings	6	28	9	10	8	11	25	2	5			43	
		Housing Inv	39	18	20	10	34	43	25	34	42			11.7 mos	
		VDL Inv	91	84	73	73	96	78	71	60	47			11.1 mos	
Villas of Indian Cre (243) \$234-\$489 60'-80'	DNW-Carrlltn BO 1Q11	Starts	0	0	0	0	0	0	0	0	0	0	0	0	
		Closings	0	0	0	0	0	0	0	0	0	0	0	0	
		Housing Inv	0	0	0	0	0	0	0	0	0	0	0	0	0.0
		VDL Inv	0	0	0	0	0	0	0	0	0	0	0	0	0.0
Villas of Indian Cre (234) \$227-\$256 22'	DNW-Carrlltn BO 1Q15	Starts	0	0	0	0	0	0	0	0	0	0	0	0	
		Closings	0	0	0	0	0	0	0	0	0	0	0	0	
		Housing Inv	0	0	0	0	0	0	0	0	0	0	0	0	0.0
		VDL Inv	0	0	0	0	0	0	0	0	0	0	0	0	0.0
Villas of Prestonwoo (315) \$451-\$520 28' Beazer Homes/Impression Homes	DNW-Carrlltn Act 1Q17	Starts	0	0	3	13	14	30	11	25	0			66	
		Closings	6	2	0	0	5	0	19	35	10			64	
		Housing Inv	2	0	3	16	25	55	47	37	27			5.1 mos	
		VDL Inv	99	99	96	83	69	39	43	18	18			3.3 mos	
Villas of Royal Gard (190) \$0-\$0 26'	DNW-Lewisvl Future	Starts	0	0	0	0	0	0	0	0	0	0	0	0	
		Closings	0	0	0	0	0	0	0	0	0	0	0	0	
		Housing Inv	0	0	0	0	0	0	0	0	0	0	0	0	0.0
		VDL Inv	0	0	0	0	0	0	0	0	0	0	0	0	0.0
Vista del Lago Addit (226) \$417-\$476 22' CB Jeni Homes	DNW-Lewisvl Act 3Q19	Starts	9	9	7	16	10	21	3	6	16			46	
		Closings	13	6	13	6	10	10	6	11	0			27	
		Housing Inv	17	20	14	24	24	35	32	27	43			19.1 mos	
		VDL Inv	118	109	102	86	76	55	52	46	30			7.8 mos	
Vista Ridge Brownsto (220) \$215-\$260 24'	DNW-Lewisvl BO 2Q17	Starts	0	0	0	0	0	0	0	0	0	0	0	0	
		Closings	0	0	0	0	0	0	0	0	0	0	0	0	
		Housing Inv	0	0	0	0	0	0	0	0	0	0	0	0	0.0
		VDL Inv	0	0	0	0	0	0	0	0	0	0	0	0	0.0
Vista Villas Additio (181) \$326-\$393 50'	DNW-Lewisvl BO 3Q20	Starts	3	0	0	0	0	0	0	0	0	0	0	0	
		Closings	9	12	4	0	0	0	0	0	0	0	0	0	
		Housing Inv	16	4	0	0	0	0	0	0	0	0	0	0	0.0
		VDL Inv	0	0	0	0	0	0	0	0	0	0	0	0	0.0
Walnut Grove Additio (73) \$290-\$300 46'	DNW-FlwrMnd BO 4Q08	Starts	0	0	0	0	0	0	0	0	0	0	0	0	
		Closings	0	0	0	0	0	0	0	0	0	0	0	0	
		Housing Inv	0	0	0	0	0	0	0	0	0	0	0	0	0.0
		VDL Inv	0	0	0	0	0	0	0	0	0	0	0	0	0.0
Warmington Meadows (308) \$386-\$709 80'	DNW-Carrlltn BO 2Q14	Starts	0	0	0	0	0	0	0	0	0	0	0	0	
		Closings	0	0	0	0	0	0	0	0	0	0	0	0	
		Housing Inv	0	0	0	0	0	0	0	0	0	0	0	0	0.0
		VDL Inv	0	0	0	0	0	0	0	0	0	0	0	0	0.0
Waterford Park Estat (110) \$299-\$445 70'-114'	DNW-FlwrMnd BO 3Q15	Starts	0	0	0	0	0	0	0	0	0	0	0	0	
		Closings	0	0	0	0	0	0	0	0	0	0	0	0	
		Housing Inv	0	0	0	0	0	0	0	0	0	0	0	0	0.0
		VDL Inv	0	0	0	0	0	0	0	0	0	0	0	0	0.0

Dallas/Ft. Worth Residential Survey (1Q22)

Copyright Metrostudy

Page 29 of 31

metrstudy
A hanleywood Company

Sales: 1-800-227-8839

*Inventory Supply = Housing Inv/(Annual Closings/12)
Vacant Developed Lot Supply = VDL Inv/(Annual Starts/12)

N/A indicates Inventory is present but cannot calculate months of supply without starts or closings (see above).

Quarterly Activity & Inventory Report

Lewisville ISD

Sorted By Subdivision

Subdivision Name (Map No)	Sub Area	Status	1Q20	2Q20	3Q20	4Q20	1Q21	2Q21	3Q21	4Q21	1Q22	Ann. Rates/ *Inv. Supply	
Waters Edge, The (256) \$475-\$900 60'	DNW-Colony BO 4Q09	Starts	0	0	0	0	0	0	0	0	0	0	
		Closings	0	0	0	0	0	0	0	0	0	0	
		Housing Inv	0	0	0	0	0	0	0	0	0	0	0.0
		VDL Inv	0	0	0	0	0	0	0	0	0	0	0.0
Wellington Manor (FI (45)) \$469-\$554 80'	DNW-FlwrMnd BO 2Q14	Starts	0	0	0	0	0	0	0	0	0	0	
		Closings	0	0	0	0	0	0	0	0	0	0	
		Housing Inv	0	0	0	0	0	0	0	0	0	0	0.0
		VDL Inv	0	0	0	0	0	0	0	0	0	0	0.0
Wellington/Brandywin (36) \$395-\$439 95'	DNW-FlwrMnd BO 4Q04	Starts	0	0	0	0	0	0	0	0	0	0	
		Closings	0	0	0	0	0	0	0	0	0	0	
		Housing Inv	0	0	0	0	0	0	0	0	0	0	0.0
		VDL Inv	0	0	0	0	0	0	0	0	0	0	0.0
Wellington/Estates, (38) \$228-\$364 50'-71'	DNW-FlwrMnd BO 3Q07	Starts	0	0	0	0	0	0	0	0	0	0	
		Closings	0	0	0	0	0	0	0	0	0	0	
		Housing Inv	0	0	0	0	0	0	0	0	0	0	0.0
		VDL Inv	0	0	0	0	0	0	0	0	0	0	0.0
Wellington/Hillcrest (42) \$340-\$374 75'-106'	DNW-FlwrMnd BO 1Q04	Starts	0	0	0	0	0	0	0	0	0	0	
		Closings	0	0	0	0	0	0	0	0	0	0	
		Housing Inv	0	0	0	0	0	0	0	0	0	0	0.0
		VDL Inv	0	0	0	0	0	0	0	0	0	0	0.0
Wellington/Wethersto (57) \$134-\$335 50'-70'	DNW-FlwrMnd BO 2Q04	Starts	0	0	0	0	0	0	0	0	0	0	
		Closings	0	0	0	0	0	0	0	0	0	0	
		Housing Inv	0	0	0	0	0	0	0	0	0	0	0.0
		VDL Inv	0	0	0	0	0	0	0	0	0	0	0.0
Wentworth Villas Est (148) \$185-\$205 40'	DNW-Lewisvl BO 2Q10	Starts	0	0	0	0	0	0	0	0	0	0	
		Closings	0	0	0	0	0	0	0	0	0	0	
		Housing Inv	0	0	0	0	0	0	0	0	0	0	0.0
		VDL Inv	0	0	0	0	0	0	0	0	0	0	0.0
West Oaks (18) \$400-\$3000 160'	DNW-DOak BO 2Q17	Starts	0	0	0	0	0	0	0	0	0	0	
		Closings	0	0	0	0	0	0	0	0	0	0	
		Housing Inv	0	0	0	0	0	0	0	0	0	0	0.0
		VDL Inv	0	0	0	0	0	0	0	0	0	0	0.0
Westport Lakeview Vi (265) \$970-\$980 25' <i>P Custom Homes</i>	DNW-Colony Act 1Q19	Starts	0	0	0	0	0	0	8	0	7	15	
		Closings	0	2	3	4	0	0	0	6	4	10	
		Housing Inv	15	13	10	6	6	6	14	8	11	13.2 mos	
		VDL Inv	18	18	18	18	18	18	10	10	3	2.4 mos	
Whisper Creek (111) \$615-\$830 93'	DNW-FlwrMnd BO 2Q16	Starts	0	0	0	0	0	0	0	0	0	0	
		Closings	0	0	0	0	0	0	0	0	0	0	
		Housing Inv	0	0	0	0	0	0	0	0	0	0	0.0
		VDL Inv	0	0	0	0	0	0	0	0	0	0	0.0
Whispering Oaks (Lew (150)) \$102-\$172 50'-70'	DNW-Lewisvl BO 4Q00	Starts	0	0	0	0	0	0	0	0	0	0	
		Closings	0	0	0	0	0	0	0	0	0	0	
		Housing Inv	0	0	0	0	0	0	0	0	0	0	0.0
		VDL Inv	0	0	0	0	0	0	0	0	0	0	0.0

Dallas/Ft. Worth Residential Survey (1Q22)

Copyright Metrostudy

Page 30 of 31

metrstudy
A hanleywood Company

Sales: 1-800-227-8839

*Inventory Supply = Housing Inv/(Annual Closings/12)
Vacant Developed Lot Supply = VDL Inv/(Annual Starts/12)

N/A indicates Inventory is present but cannot calculate months of supply without starts or closings (see above).

Quarterly Activity & Inventory Report

Lewisville ISD

Sorted By Subdivision

Subdivision Name (Map No)	Sub Area	Price Range	Lot Size	Status	1Q20	2Q20	3Q20	4Q20	1Q21	2Q21	3Q21	4Q21	1Q22	Ann. Rates/ *Inv. Supply	
Whyburn (81) \$0-\$0 80'	DNW-FlwrMnd Future	Starts			0	0	0	0	0	0	0	0	0	0	
		Closings			0	0	0	0	0	0	0	0	0	0	0
		Housing Inv			0	0	0	0	0	0	0	0	0	0	0.0
		VDL Inv			0	0	0	0	0	0	0	0	0	0	0.0
Wichita Chase (33) \$356-\$465 90'-140'	DNW-FlwrMnd BO 2Q06	Starts			0	0	0	0	0	0	0	0	0	0	
		Closings			0	0	0	0	0	0	0	0	0	0	0
		Housing Inv			0	0	0	0	0	0	0	0	0	0	0.0
		VDL Inv			0	0	0	0	0	0	0	0	0	0	0.0
Wichita Creek Estate (20) \$460-\$650 160'-165'	DNW-FlwrMnd BO 2Q01	Starts			0	0	0	0	0	0	0	0	0	0	
		Closings			0	0	0	0	0	0	0	0	0	0	0
		Housing Inv			0	0	0	0	0	0	0	0	0	0	0.0
		VDL Inv			0	0	0	0	0	0	0	0	0	0	0.0
Wichita Estates (135) \$535-\$637 80' Copper Street Homes	DNW-HighVil Act 1Q16	Starts			0	0	1	0	0	0	0	1	0	1	
		Closings			0	0	1	0	2	0	0	0	0	0	0
		Housing Inv			2	2	2	2	0	0	0	1	1	1	n/a
		VDL Inv			3	3	2	2	2	2	2	1	1	1	12.0 mos
Willowbrook Addition (210) \$368-\$446 50'	DNW-Lewisvl BO 2Q19	Starts			0	0	0	0	0	0	0	0	0	0	
		Closings			0	0	0	0	0	0	0	0	0	0	0
		Housing Inv			0	0	0	0	0	0	0	0	0	0	0.0
		VDL Inv			0	0	0	0	0	0	0	0	0	0	0.0
Windhaven Crossing T (246) \$330-\$435 22' Mattamy Homes	DNW-Lewisvl Act 1Q17	Starts			21	29	46	6	13	0	7	6	22	35	
		Closings			29	35	15	31	40	0	15	10	0	25	
		Housing Inv			46	40	71	46	19	19	11	7	29	13.9 mos	
		VDL Inv			125	96	50	122	109	109	102	96	74	25.4 mos	
Woods @ Wellington, (58) \$340-\$380 80'	DNW-FlwrMnd BO 4Q02	Starts			0	0	0	0	0	0	0	0	0	0	
		Closings			0	0	0	0	0	0	0	0	0	0	
		Housing Inv			0	0	0	0	0	0	0	0	0	0	0.0
		VDL Inv			0	0	0	0	0	0	0	0	0	0	0.0
Wright Estates (48) \$559-\$590 223'	DNW-FlwrMnd BO 3Q08	Starts			0	0	0	0	0	0	0	0	0	0	
		Closings			0	0	0	0	0	0	0	0	0	0	0
		Housing Inv			0	0	0	0	0	0	0	0	0	0	0.0
		VDL Inv			0	0	0	0	0	0	0	0	0	0	0.0
Wyndale Meadows Addi (244) \$383-\$505 50'-65'	DNW-Lewisvl BO 3Q20	Starts			2	0	0	0	0	0	0	0	0	0	
		Closings			7	1	1	0	0	0	0	0	0	0	0
		Housing Inv			2	1	0	0	0	0	0	0	0	0	0.0
		VDL Inv			0	0	0	0	0	0	0	0	0	0	0.0
Selection Totals					Starts	269	283	231	219	258	294	356	282	262	1,194
					Closings	297	283	340	322	211	219	244	279	176	918
					Housing Inv	852	852	743	640	687	762	874	877	963	12.6 mos
					VDL Inv	1,736	1,664	1,536	1,499	1,867	1,885	1,549	1,807	1,568	15.8 mos

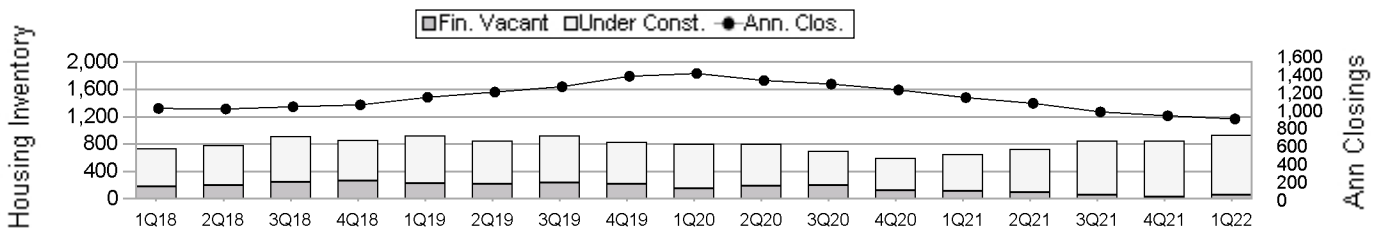
*Inventory Supply = Housing Inv/(Annual Closings/12)
 Vacant Developed Lot Supply = VDL Inv/(Annual Starts/12)
 N/A indicates Inventory is present but cannot calculate months of supply without starts or closings (see above).

Historical Housing Activity Summary

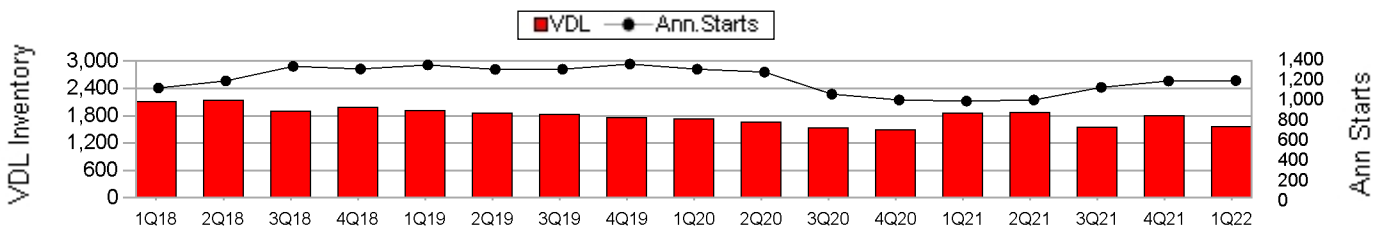
Lewisville ISD

Qtr	Qtr Clos	Ann Clos	Model	FinVac	UC	Total Inv	Total Supply	Qtr Starts	Ann Starts	VDL	VDL Supply	Fut Lots	Ann Lot Deliv
1Q18	182	1,035	45	183	552	780	9.0	280	1,121	2,123	22.7	3,991	1,574
2Q18	302	1,029	47	200	587	834	9.7	356	1,191	2,144	21.6	3,939	1,761
3Q18	320	1,054	49	243	670	962	11.0	448	1,335	1,907	17.1	3,877	1,779
4Q18	271	1,075	54	267	595	916	10.2	225	1,309	1,989	18.2	3,516	1,452
1Q19	266	1,159	50	233	687	970	10.0	320	1,349	1,922	17.1	3,280	1,148
2Q19	361	1,218	75	215	631	921	9.1	312	1,305	1,868	17.2	3,301	1,029
3Q19	380	1,278	62	235	693	990	9.3	449	1,306	1,832	16.8	3,210	1,231
4Q19	387	1,394	47	221	612	880	7.6	277	1,358	1,772	15.7	3,020	1,141
1Q20	297	1,425	50	152	650	852	7.2	269	1,307	1,736	15.9	2,987	1,121
2Q20	283	1,347	51	192	609	852	7.6	283	1,278	1,664	15.6	2,984	1,074
3Q20	340	1,307	49	201	493	743	6.8	231	1,060	1,536	17.4	3,039	764
4Q20	322	1,242	43	124	473	640	6.2	219	1,002	1,499	18.0	2,895	729
1Q21	211	1,156	39	114	534	687	7.1	258	991	1,867	22.6	2,254	1,122
2Q21	219	1,092	35	95	632	762	8.4	294	1,002	1,885	22.6	2,423	1,223
3Q21	244	996	30	63	781	874	10.5	356	1,127	1,549	16.5	2,681	1,140
4Q21	279	953	28	36	813	877	11.0	282	1,190	1,807	18.2	2,380	1,498
1Q22	176	918	33	56	874	963	12.6	262	1,194	1,568	15.8	2,373	895

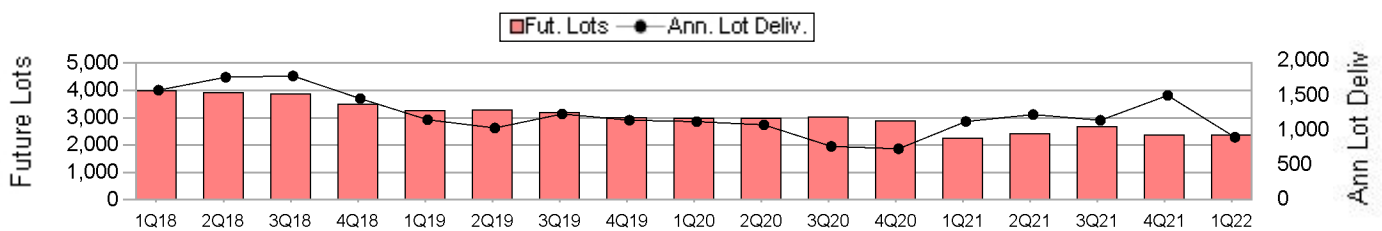
Housing Inventory and Closings By Quarter



Vacant Developed Lots and Starts By Quarter



Future Lots and Deliveries By Quarter



Price Range Analysis

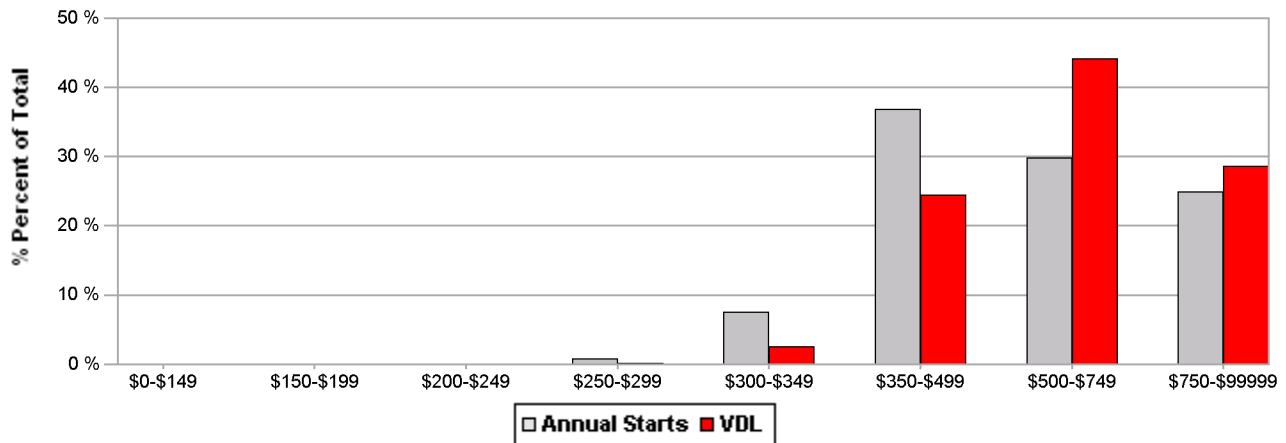
Lewisville ISD

\$0 \$150,000 \$200,000 \$250,000 \$300,000 \$350,000 \$500,000 \$750,000
 \$149,999 \$199,999 \$249,999 \$299,999 \$349,999 \$499,999 \$749,999 \$999,999 *Total

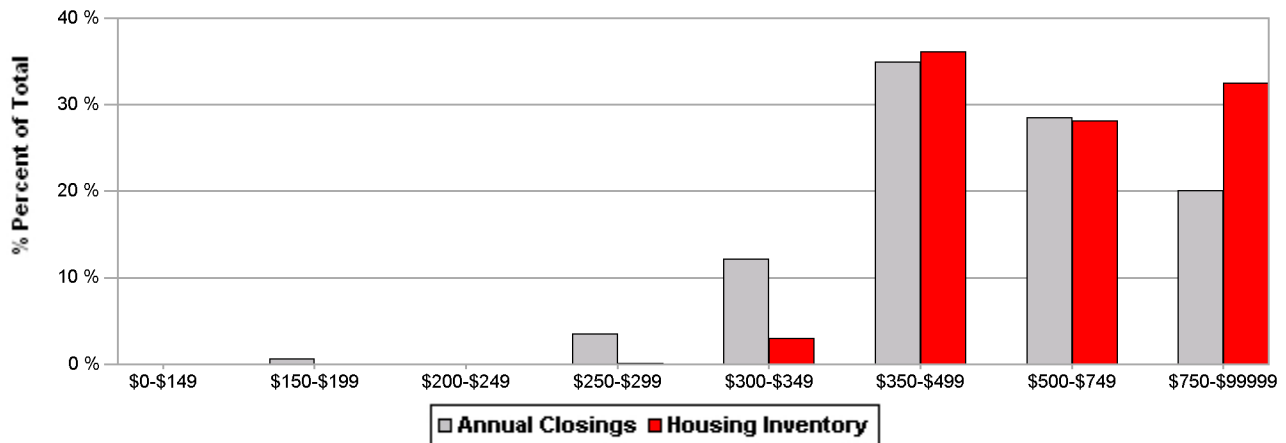
Custom Market Numerical Totals	Ann Starts	0	0	10	91	440	356	297	1,194
	Ann Closings	6	0	33	112	321	262	184	918
	Housing Inv	0	0	1	29	348	271	313	963
	VDL Inv	0	0	3	40	384	692	450	1,568
	Housing Supply (Mos)	-	-	0.4	3.1	13.0	12.4	20.4	12.6
	VDL Supply (Mos)	-	-	3.1	5.2	10.5	23.3	18.2	15.8

Custom Market Percentage Totals	Ann Starts			0.9 %	7.6 %	36.8 %	29.8 %	24.9 %	100 %
	Ann Closings	0.7 %		3.6 %	12.2 %	34.9 %	28.6 %	20.1 %	100 %
	Housing Inv			0.1 %	3.0 %	36.2 %	28.1 %	32.5 %	100 %
	VDL Inv		0.0 %	0.2 %	2.5 %	24.5 %	44.1 %	28.7 %	100 %

Price Range Distribution of Annual Starts vs VDL



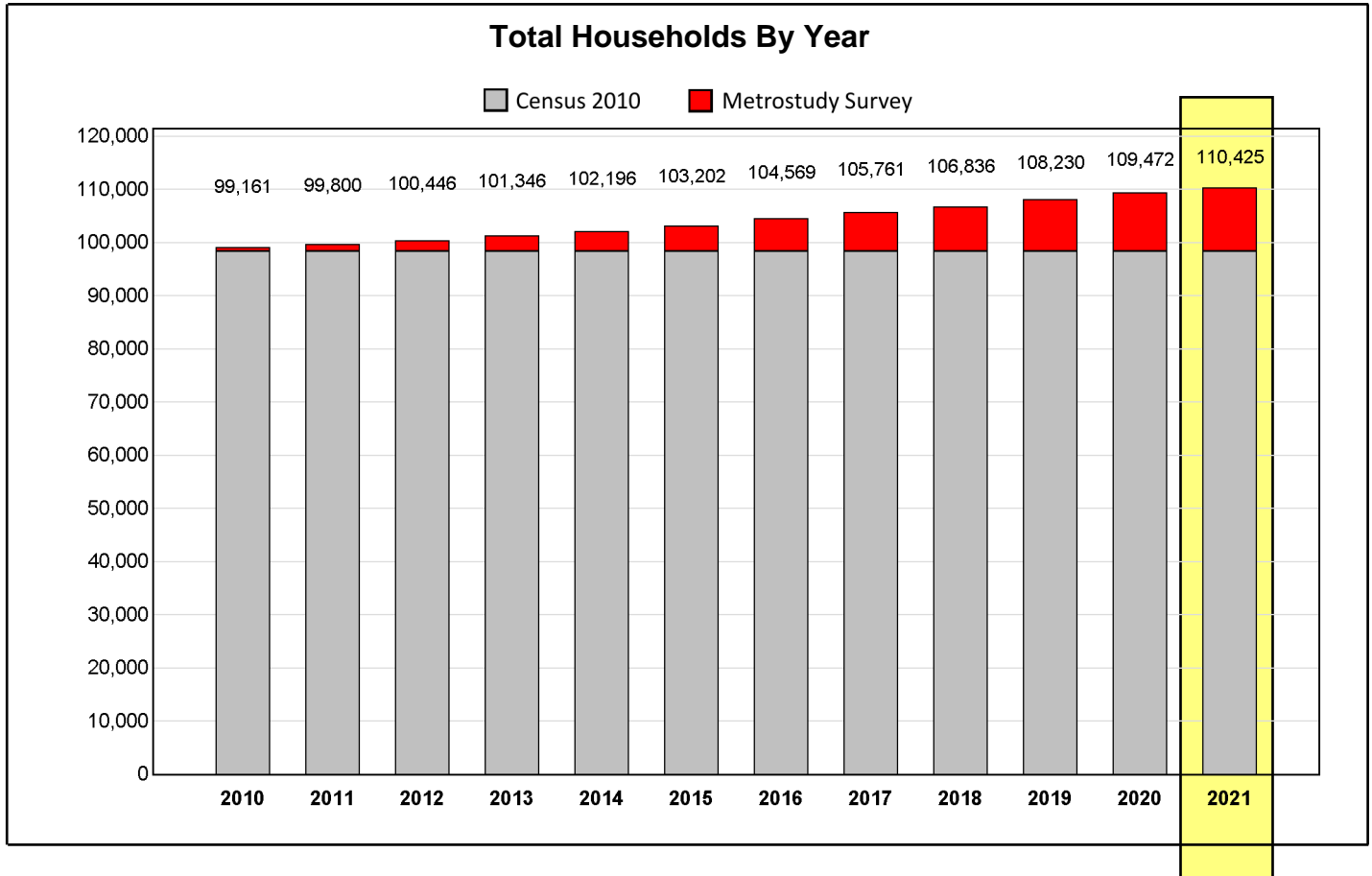
Price Range Distribution of Annual Closings vs Housing Inventory



*Because this report excludes sections without pricing information, the totals may not match those shown on other summary reports.

Household Growth Summary

Lewisville ISD



Household Development Summary								
Source	Selected Subdivisions		Households By Construction Status			Occupied Units	Annual Closings	Potential Households
	Count	Status	Future Lots	Vacant Lots	Housing Inventory			
Census						98,478		
Metrostudy	247	Builtout	0	0	0	7,041 ¹		
Metrostudy	58	Active	339	1,568	963	4,900 ¹		
Metrostudy	30	Future	2,034	0	0	6		
Totals	335		2,373	1,568	963	110,425	918	115,329

1. Cumulative closings since the Year 2010; Occupied units are recorded from onsite surveyor inspections performed during the Metrostudy residential survey. Closings are calculated as the change in occupied units between quarters.