

LEWISVILLE ISD | State of the District | 2021-22



In Lewisville ISD, all of our students



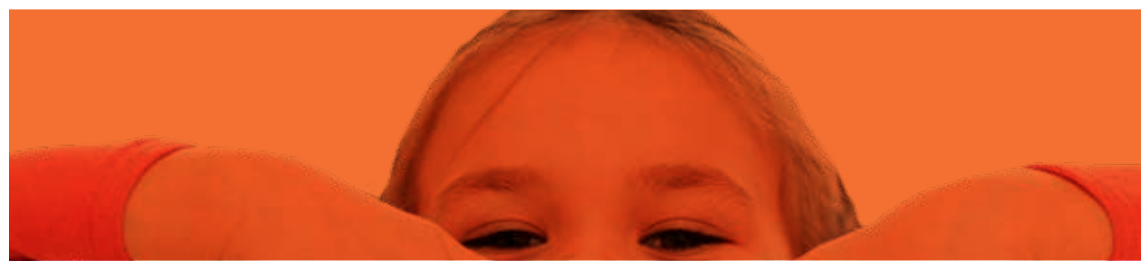
enjoy thriving, productive lives





in a

future



they

create



Welcome to Lewisville ISD – we're glad you're here!

LISD has been my home for my entire career in public education - more than 35 years. My children grew up in LISD schools. My wife retired from LISD, and I still have family working in the district. This district has been my life's work. My heart beats for this district, its students, families, and staff. And there is nobody more invested or who cares more about the LISD family than me.

My job as the leader of this district is to find the best path possible that serves the interests of our nearly 50,000 students and 6,500 employees. That is challenging in a typical school year, but has been nearly impossible being faced with unprecedented challenges as we've navigated a global pandemic together.

If the last two years have shown us anything, it is that our schools truly are the cornerstones of the communities we serve. Our families depend on our schools to provide an education for our students, and our educators do a tremendous job at that. But families also depend on us for much more than that. They depend on our counselors to help them when they are in crisis. On child nutrition employees to provide hot meals. On school nurses to help keep our students healthy. On social workers to connect with our families to meet whatever needs arise. Regardless of circumstances, our schools are there no matter the need.

I'm confident the communities we serve will continue to work together in creating an inclusive and nurturing learning environment our students can call home - one they can THRIVE in.

KEVIN ROGERS, ED.D

Superintendent of Schools, Lewisville Independent School District



A word from the Board



Welcome to Lewisville ISD, a district we are proud to call our home!

Each of our board members has had children attend LISD schools, and a few of us have attended LISD campuses, too. We are proud of the tradition of excellence that has been established in our district, and are committed to ensuring your children continue to THRIVE in LISD.

As your elected Board of Trustees, our promise to you is to partner with Superintendent Dr. Kevin Rogers and the incredible LISD staff in guiding one of the largest school districts in the state through an exciting school year. We are thrilled to be able to visit our campuses and kids this year to see the bustle in our classrooms and look forward to the opportunities ahead.

We thank you for choosing Lewisville ISD and are honored to serve our community as your Board of Trustees.



**TRACY SCOTT
MILLER**
President



**ALLISON
LASSAUN**
Vice President



**KATHERINE
SELLS**
Secretary



**DR. BUDDY
BONNER**
Member



**ANGIE
COX**
Member



**KRISTI
HASSETT**
Member



**JENNY
PROZNIK**
Member



thrive?

what's it mean to thrive?



to make strides

In Lewisville ISD, our promise to our students, staff, families and the communities we serve is simple - ALL of our students enjoy thriving productive lives in a future they create. LISD is one of the largest school districts in the state and serves students from all walks of life — different ethnicities, races, religions, socioeconomic levels, cultures, beliefs and more — with each student having their own needs and interests.





LISD is home to 69 campuses,
with nearly 50,000 students
enrolled each year.



5 9th | 10th grade
campuses



5 high schools



2 career and tech ed
centers

15 middle
schools

2 specialty
campuses

1 early
childhood
center



39
elementary
schools






to grow

Thanks to the support of LISD voters, the district has had opportunities to grow and expand our offerings for the LISD community through several bond elections. Most recently the district opened the brand-new, state-of-the-art Technology Exploration and Career Center West (TECC-W), opened the newly constructed Hedrick Middle School, added a new learning space to the LISD Outdoor Learning Area (LISDOLA), invested in existing campus renovations and refreshes and dedicated funds to technology upgrades across the district.

Thank you, voters!



The LISD STEM Academy at Memorial Elementary School features a collaborative design with the library at the core of the campus, spanning two-stories, to serve as a learning hub for students. The campus is designed by Huckabee and built by Jackson Construction and accommodates up to 800 students in grades pre-K through five, boasting a 118,762 square foot floor plan.

Welcome Mavericks!

On August 11, LISD opened its fifth elementary STEM Academy, the LISD STEM Academy at Memorial Elementary, located at 1001 Josey Lane in Lewisville. The school is a split feeder campus, with students zoned to either The Colony High School or Hebron High School.



A modern outdoor learning center opens in 2021



TECC-W opened in 2020 and with TECC-E serves the growing need for career training



Hedrick Middle School opened its new campus in 2020



Students arrive at Memorial on Aug. 11 for the first day of school. It's a great (first) day to be a Maverick!



to flourish

In Lewisville ISD, highly-trained and certified professionals not only teach future scholars, but are front row for all of life's milestones. Through offering a multitude of educational choices such as the LISD STEM Academy, Career and Technical Education and Language programs, LISD caters to every child's interest and fosters an inclusive and nurturing learning environment all students can call home.



2,083

STEM
students



169

Staff members
across 9 campuses
with National STEM
Certification



1,989

CTE certifications
earned



70

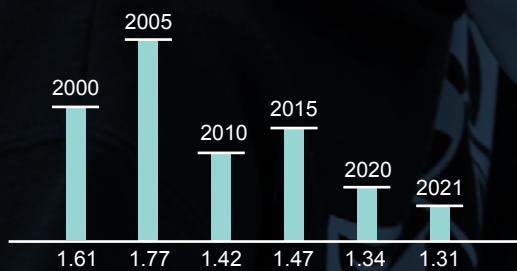
Associate's Degrees
earned through LISD's
Collegiate Academy
since 2020



For the 2021-22 school year, LISD added the middle school STEM Academy to its repertoire, offering sixth graders from four LISD campuses, including Creek Valley, Downing, Hedrick and Forestwood, unique learning experiences through the STEM Academy at the middle school level. During the next two years, a grade level will be added to the middle school STEM Academy each year.



to gain



LISD TAX RATE HISTORY



TEXAS SMART SCHOOLS

In Lewisville ISD, one of our cornerstones and guiding principles is Resource Stewardship, which is about three things: our time, talent and treasure. In LISD, we pride ourselves on managing our “treasure” in a fiscally responsible way while still meeting student needs.

- During the last 20 years, LISD’s tax rate has decreased overall, from \$1.61 in 2000, to \$1.31 in 2021.
- According to the 2020 report on Texas Smart Schools, LISD received 4 out of 5 stars, ranking very high in academic progress, at or above 83% of all Texas school districts.
- Compared to other school districts in our area and others our size in Texas, LISD starts with less money per student, spends more on instruction and campus operations, less on central administration and payroll, and ends with a lower cost per student.
- LISD budgets to pay off debt from bond funds in just 20 years, while most school districts have longer amortization periods.
- LISD was one of only 10 school districts across the country to receive the 2021 ENERGY STAR Partner of the Year Award, an honor recognizing organizations that exhibit dedication to managing energy use and have made contributions toward protecting the environment via superior energy achievements.

HOW A DOLLAR IS SPENT

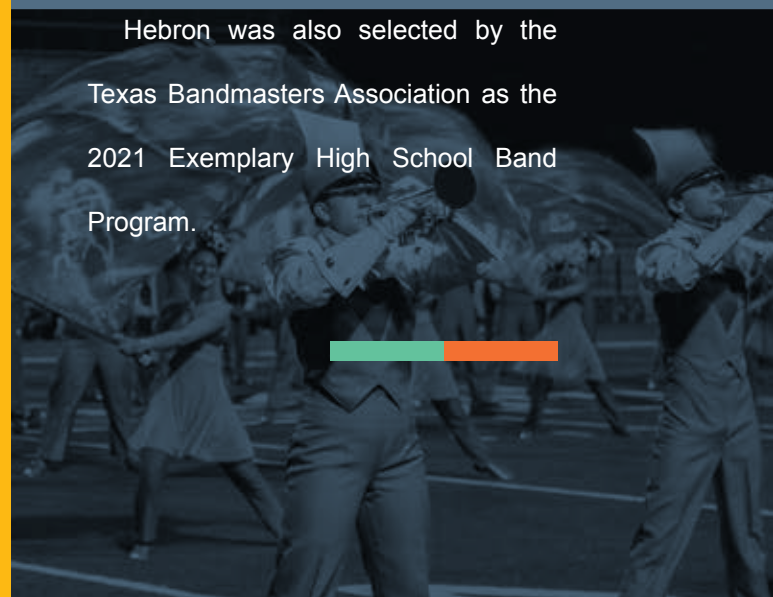




to shine

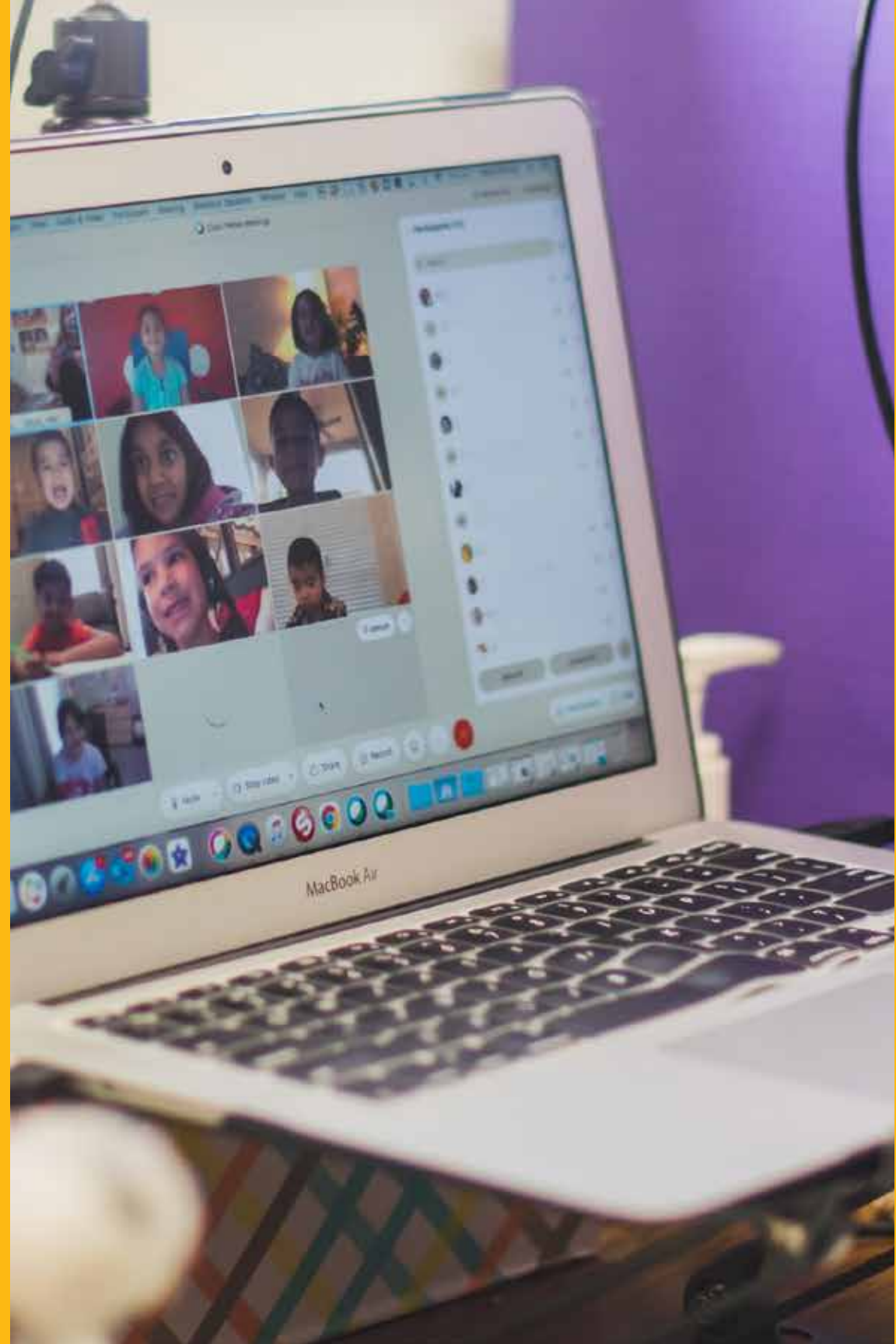
Lewisville ISD is known for its distinction in the arts, and 2020-21 was no different. Three out of the five high school band programs, Flower Mound, Hebron and Marcus, all advanced as finalists in the UIL 6A State Marching Band Contest, with Marcus earning 4th place, Flower Mound earning the Bronze medal and Hebron earning the Silver medal.

Hebron was also selected by the Texas Bandmasters Association as the 2021 Exemplary High School Band Program.



to get better every day

With the 2020-21 school year came unexpected challenges and obstacles, all of which LISD tackled head on. Navigating the uncharted waters of a global pandemic, LISD worked tirelessly to offer a world-class education to its students, giving families the choice to learn either in our campuses, or from home. Of the 50,000 total students, LISD served 20,090 virtual students throughout the 2020-21 school year.



The 2020-21 school year was one of the most challenging school years in recent memory for the LISD technology department, being tasked with ensuring all 50,000 students were equipped with devices and reliable WiFi to ensure families were ready for virtual or remote learning.



20,090

**Students served virtually
for 2020-21**



52

**exterior wifi points
across the district**

**Number of devices
deployed to students
for 2020-21**

49,000+



801,000

**Webex sessions held
in 2020-21**





to succeed

The Class of 2021 had its fair share of obstacles to overcome during a year filled with so many unknowns, but they proved to be up for the challenge.

Congrats, class of 2021!



4,256

Candidates
for graduation



\$82 million

Awarded in
Scholarships



14,235

College
hours earned



59

National Merit
Scholars



43

College Board
National Recognition
Scholars

Even with fewer opportunities to gather in person during the 2020-21 school year, LISD students and staff showed their grit and determination through incredible achievements.



Southridge Elementary
teacher Alexis Miller

**Bryon Kolbeck
National CTO of the Year
- Consortium for
School Networking**



LISD Chief
Technology Officer
Bryon Kolbeck

**Common Sense
District**
**LISD is one of nine
districts in the state,
and 63 in the nation,
to be recognized
for its commitment
to teaching and
emphasizing the
importance of digital
citizenship**



**2 State Champion
Titles**
**Flower Mound High School
Girls Cross Country and
Girls Soccer Teams**

**Alexis Miller
Texas Teacher of
the Year Finalist**

**Hebron High School
Girls Golf Team
State Champions**



38 **LISD schools earned the
Counselors Reinforcing
Excellence in Texas award, an
honor given to outstanding
counseling programs**

to stand together

Our hard working volunteers are the backbone of LISD schools. We value every one of them not because they work for free, but because they are priceless.

For more information on becoming a volunteer and to learn how to get involved with our campuses, visit LISD.net/volunteer.

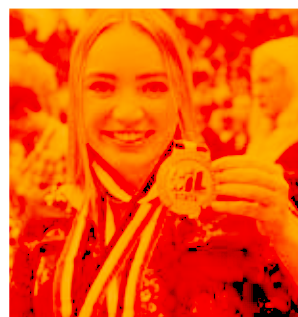


Want to partner with us?

Something special happens when local schools and the communities they serve interact together: real-world learning through activities that are relevant and meaningful for every student. Be a partner with Lewisville ISD and help shape your future workforce.

For more information on ways to get involved with our district, visit [LISD.net/partnerships](https://www.lisd.net/partnerships).





we are family

Lewisville ISD serves students and families from 13 different municipalities from across 127-square miles, from five different high school feeder zones, but one thing remains - LISD is ONE big family.





LEWISVILLE ISD | State of the District | 2021-22

