

VIDEO 8: UNDERSTANDING & SELECTING AN ENDORSEMENT

This script and slide view may be used as you view video 8 of the Foundation High School Program (FHSP) Video Series.



Welcome students and parents; in this video we will help you select an endorsement area for your Foundations High School Program.

Students now have more flexibility and course options than ever before when it comes to earning their high school diploma! Let's explore the options so that you can choose your perfect path for high school!

Now that you have had a chance to use Career Cruising and identify your career cluster of interest let's look at your next steps.....knowing your career interests will help you select an endorsement.



ENDORSEMENTS

- Arts & Humanities
- Business and Industry
- Multidisciplinary
- Public Service
- STEM (Science, Technology, Engineering, and Math)

A new term you will continue hearing is the word “endorsement”. This will become your area of focus while in high school.

There are five endorsement areas. You will choose one of the following: Arts & Humanities, Business & Industry, Multidisciplinary, Public Services, and STEM (Science, Technology, Engineering, and Math).

Some of you might even be able to graduate with more than one endorsement!

Matching Career Clusters with an Endorsement

LISD 2014-2015 NINTH GRADE REGISTRATION CHECKLIST

The LISD Guidance and Counseling Department has created a number of resources for parents and students as they navigate the new Foundation High School Program (FHSP) graduation plan. These resources will guide you as you create your four-year plan and complete online registration for the next school year.

The following should be completed prior to the eighth grade parent night with the high school counselors. The middle school counselors will be facilitating some of these activities during the school day. However, we ask that all parents utilize these resources as well. By completing these activities beforehand, you will be prepared for the information given during enrollment.

- Please watch the following videos to prepare for high school counselor visit and HS parent meetings. Videos and other auxiliary resources are available on the LISD Guidance and Counseling website at <http://hh.ly/FHSP/LISD>. You can scan the QR code at the right for access.
 - ✓ Video 1: Overview of the Foundation High School Program
 - ✓ Career Cruising Series Video Series 2-7
 - Video 2: Overview
 - Video 3: Using Career Assessments
 - Video 4: How to Explore Careers
 - Video 5: Exploring Options Beyond High School
 - Video 6: My Course Planner and Registration

Students should fill in their top 3 identified clusters below. This information can be helpful in selecting an endorsement.

1. _____

2. _____

3. _____

- ✓ Video 7: Understanding and Selecting an Endorsement
- ✓ Video 8: Endorsement Career Cluster video
- ✓ Video 9: Creating your Four-Year Plan

- Review comprehensive information in the online Parent/Student Guide to the FHSP.
- Complete Foundation High School Plan Worksheet AND/OR Four-Year Plan Worksheet. You can start adding your Four-Year Plan into Career Cruising if you wish.

These activities will be completed through the 9th Grade Registration process:

- Complete and submit your Four-Year plan into Career Cruising My Course Plan. The 9th grade course selections will finalize student course registration.
- Identify your endorsement on your 9th grade Course Selection card.
- Submit all other enrollment forms as outlined in 9th Grade Registration packets.

Other Resources are posted on the FHSP Graduation Program website including:

- 2014-2015 HIGH SCHOOL Course Description Guide
- Foundation High School Plan Parent/Student Guide
- FHSP Requirements Worksheet
- Four-Year Plan Worksheet
- FHSP FAQ

FHSP Eighth Grade Registration Checklist
2014-2015

This video will help you identify which of the five endorsements is best suited for your career cluster.

At this time, please look at your Registration Checklist. On your sheet you should have written your top Career Cluster area of interest. This will help you determine which of the five endorsement areas is best for you and your particular interests. If you do not have this sheet handy, you can log into career cruising to access your career clusters.

Choose a CTE *or* Non-CTE Endorsement Path

- CTE stands for Career & Technical Education
- CTE courses may be found on the HS campus &/or at either of the two LISD Career Centers
- *Students may still access non-CTE courses within a CTE endorsement path*

- Non-CTE means a Non-Career & Technical route
- Refers to our more traditional courses, found on the HS campus
- *Students may still access CTE courses within a non-CTE endorsement path*

Before we jump into the specifics of each endorsement there is one more thing we'd like to cover with you.....students will have the flexibility to earn their chosen Endorsement through a CTE or Non CTE route. CTE stands for Career & Technical Education. A student's personal goals and interests will help determine if a CTE or non CTE path is best for you.

Some CTE courses are available on the high school campus and many more are available at the two LISD Career Centers. Students who choose a CTE path may also take non-CTE courses, so long as they meet all of their CTE endorsement criteria by graduation.

A non CTE path consists of students taking more traditional courses and electives located on the high school campus. Students pursuing a non-CTE endorsement path may still access CTE courses so long as they meet the requirements of their non-CTE endorsement by graduation.

If you have not watched video 7, please view this video to get a sneak peek at matching careers with endorsements.



ENDORSEMENTS

- Arts & Humanities
- Business and Industry
- Multidisciplinary
- Public Service
- STEM (Science, Technology, Engineering, and Math)



Now back to our topic at hand.....choosing an Endorsement area.
Remember there are five endorsement areas from which students may choose based on their career area of interest.



First is the Arts & Humanities endorsement. This slide highlights the many careers that fall into the Arts and Humanities area such as photography, design, and art, music, and theatre. If you are interested in one of these career fields, then the Arts & Humanities endorsement may be the choice for you.



Now let's explore the Business and Industry endorsement area. Those of you who might be best suited for the Business and Industry Endorsement would be students with a career cluster in the following areas: Agriculture Food, & Natural Resources, Architecture and Construction, Arts AV Technology & Communication, Business Management, Finance, Hospitality & Tourism, Information Technology, Manufacturing, Marketing Sales & Service, Transportation & Distribution, and Technology Applications.

As you can see by the number of career fields included under The Business & Industry Endorsement, it is a good match for a number of Career Cluster interest areas.



Next is the Multidisciplinary endorsement.

This is a good fit for students who are interested in CTE courses in a variety of career fields or for non-CTE students who prefer to take four core classes each year of high school.



Now let's look at the Public Services endorsement. Students interested in Human Services, Health Sciences, Education, Law, Public Service, or Corrections & Security would be good candidates for a Public Services endorsement.



ENDORSEMENTS

- 4 credits as outlined
- Course sequence in content areas is important
- Must choose one but may earn multiple endorsements
- CTE or non-CTE option

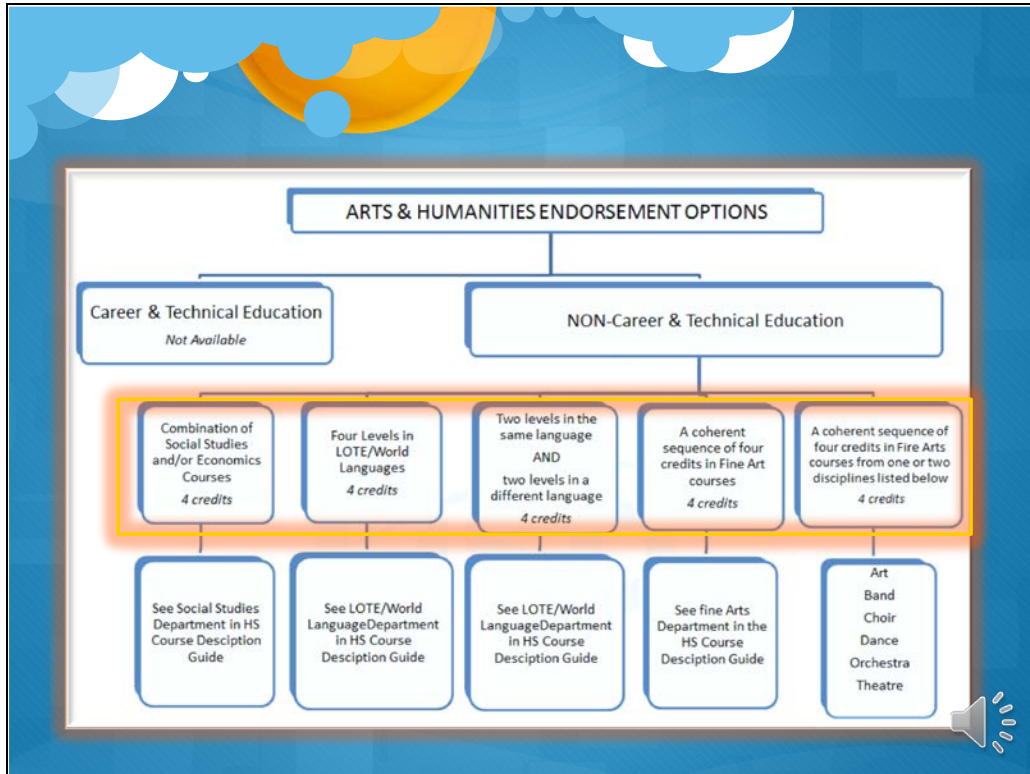
Before we dive into the specifics of each endorsement let's pause for a quick review:

Each endorsement includes a specific listing of courses from which students will earn four credits.

Take note of any requirements for the specific course sequence or the order in which classes must be taken

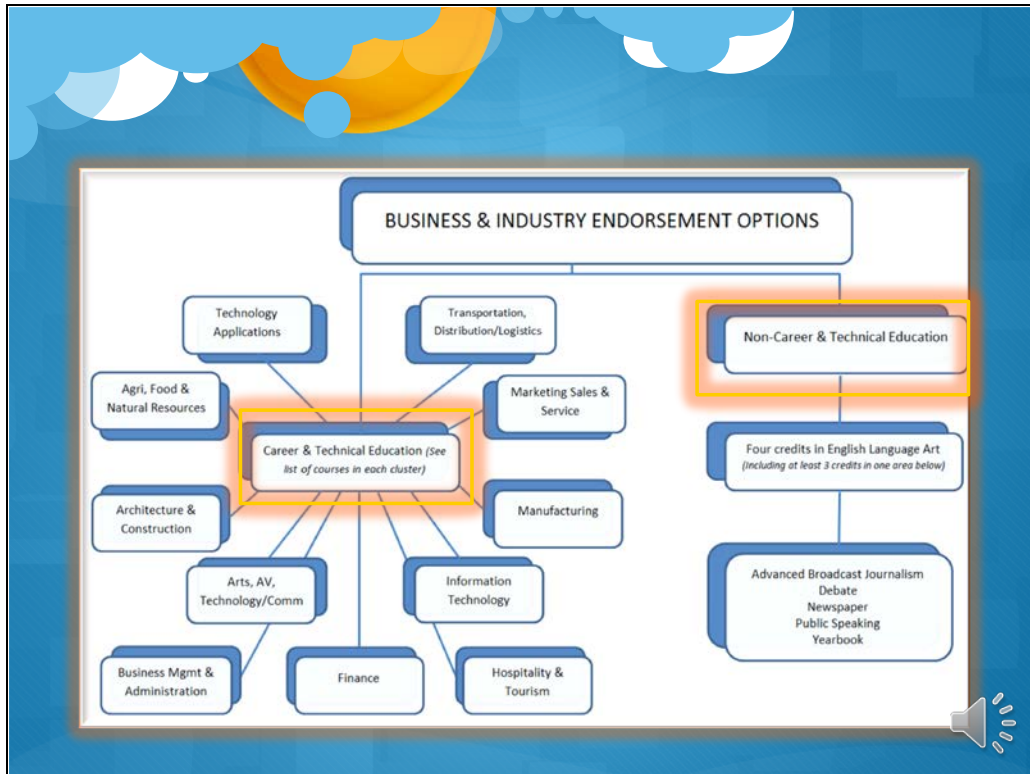
Students must select one endorsement when they register for their Freshman classes.

Within each endorsement students have the flexibility to take a CTE or non CTE path (with one small exception that we will cover in just a moment).

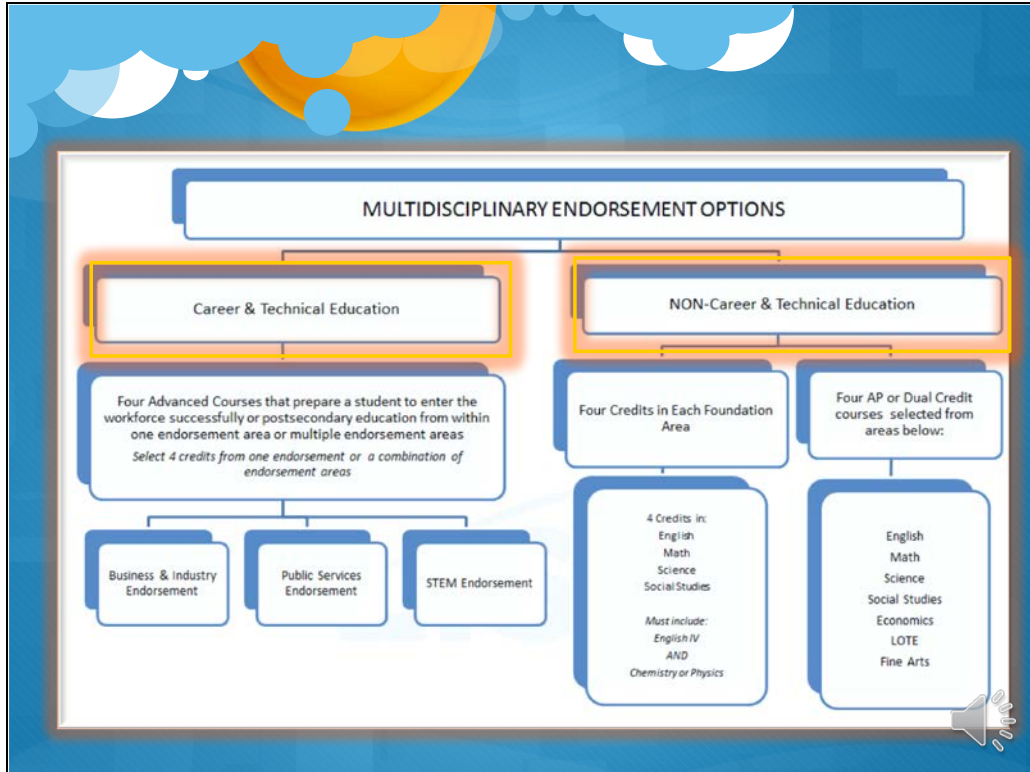


Now let's look at specific components within each endorsement area. We'll start with the Arts and Humanities endorsement. This is that one small exception I mentioned just a moment ago. This endorsement area is the only one in which no CTE route is available. Thus, students selecting the Arts and Humanities endorsement will take a non-CTE path to meet their course requirements.

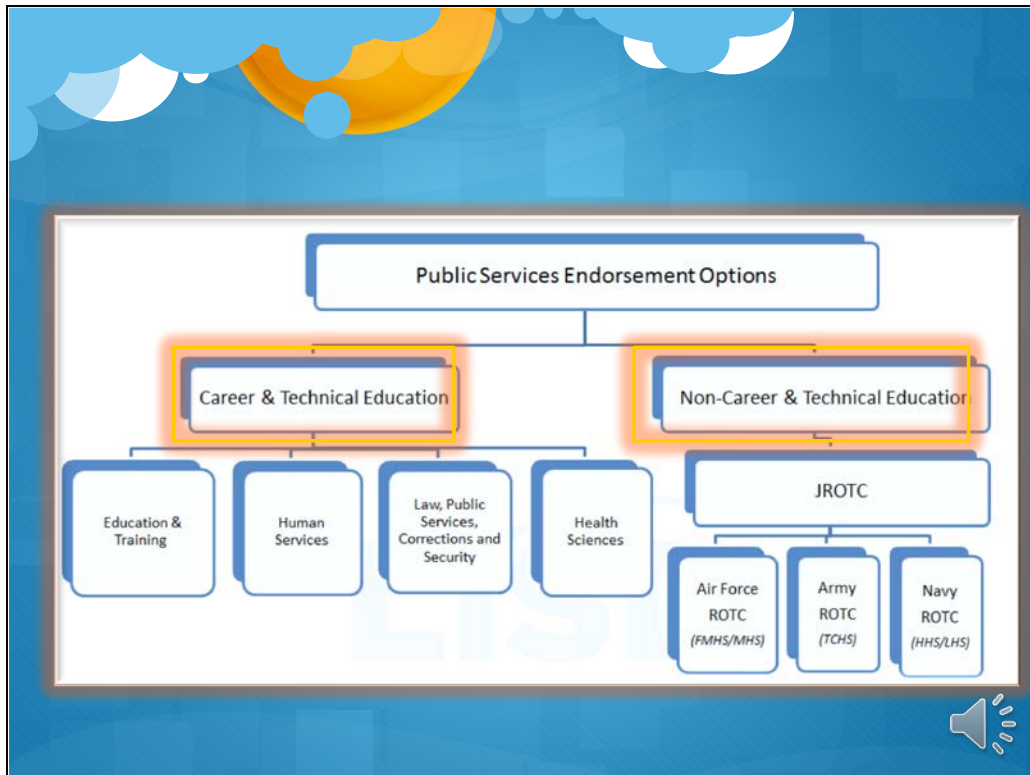
Students pursuing an Arts and Humanities have five pathways to satisfy this endorsement. Students should refer to the Parent/Student Guide to the Foundation High School Program for the most detailed information on each endorsement and to view this di



Next let's review the Business & Industry Endorsement options.....from the slide you can see there are numerous CTE options for earning this endorsement. The non CTE pathway is outlined as well. Again, students must earn 4 approved credits as outlined in order to achieve the endorsement. As before, please refer to the parent/student guide for the most detailed information on this endorsement option.

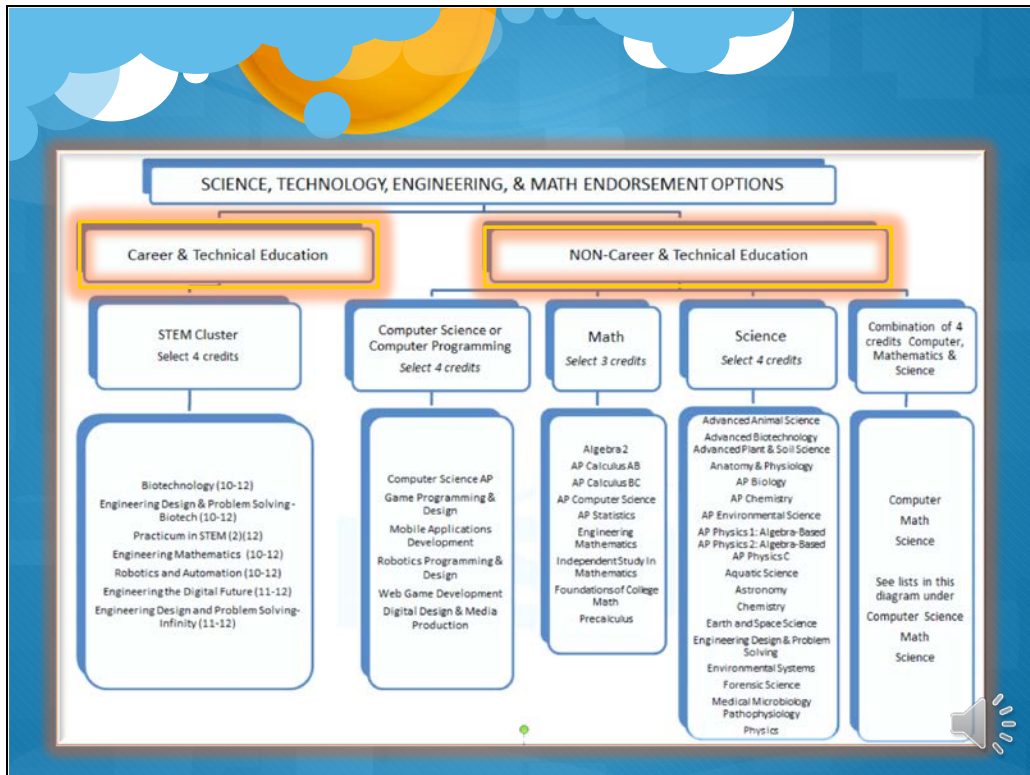


Now let's look at the options to those pursuing a Multidisciplinary Endorsement. Again, a CTE path as well as a non CTE path is available for student choice. Each pathway outlines a specific route for earning this endorsement. For CTE students, refer to your parent/student guide to determine which courses are considered Advanced CTE Courses to ensure you meet the requirements therein.




Next up are the Public Services Endorsement options.....CTE students will earn 4 approved credits within one of the following four clusters: education and training, human services, law, public services, corrections and security, and health sciences.

Non CTE students would earn this endorsement by earning 4 state credits in the ROTC program available on their high school campus.




Finally, let's look at the options for earning a STEM endorsement: Science, Technology, Engineering, and Math. You can see there are numerous course options for earning the STEM endorsement from the CTE path.

With the non CTE path, students may choose from course offerings in computer science and programming; math; science; or a combination of the three non-CTE areas.



Learn More

- Be sure to check out our videos for the Careers and Endorsements to learn more about courses available to you.
- See the Four Year Planning video for your next steps in the registration process.



Thank you again for taking such a strong interest in your high school plans. We realize this is a lot of information to digest, and we encourage you to watch this video as many times as needed in addition to reading through the written materials available to you online and in print.

Remember to also check out the Careers and Endorsements video to see the wonderful programs available to our students.

And be sure to watch the Four Year Planning video for your next steps to register for high school.

Thank you for your time, and congratulations on starting your journey to graduation.