



LISD

HARVESTER NEWS

NOVEMBER 2008

GIZMO USAGE REPORTS

One of the district's goals is to have **100% teacher AND student participation** using the GIZMO software. In the Middle Schools, every science teacher has been given a username and password. The expectation is that teachers will use the Gizmos on the classroom computers that has been provided by the curriculum department.

A report will be generated monthly and sent to the Instructional Technologists, Principals, and Curriculum Directors. This report will be reviewed and shared with the Lead Teacher. The report contains the usage information for the district, per campus, as well as per teacher.

What is on the report?

- Number of time each specific teacher has logged in to the program.
- Number of Gizmos on Class Tabs per teacher.
- Number of Gizmos viewed by the teacher
- Number of distinct STUDENT logins for that campus.
- Number of times the students logged in per teacher. (each student = 1)
- Date of last teacher login.

Getting Started for the First Time:

1. Go to www.explorelearning.com
2. Login using the username and password provided by your Instructional Technologist.
3. Complete the profile page. If you change your username or password information, please share it with your Instructional Technologist.
4. In the top right corner, click on the question mark icon to access the Help Directory. Here you will find simple directions for a home page orientation, how to set up classes, how to add Gizmos to classes, how to enroll students in a class, and more!

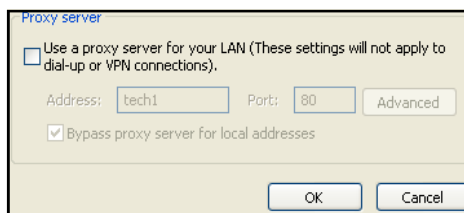
HOW TO ACCESS THE INTERNET AT HOME

If you have an Internet provider at home, you can easily convert your school laptop to your Internet provider so that you can work from home. In order to do so, you have to turn the Internet Proxy off. These steps will walk you through the procedure:

- At home, turn on your school laptop.
- On the login screen, select the box "Workstation Only" and login using your regular school username and password.
- Once the desktop has loaded, double click on the Internet icon.
- The Internet page will not load until the proxy is turned off. On the tool-

bar at the top of the screen, click on Tools > Internet Options.

- Click on the "Connections" tab.
- Click on "Lan Settings".
- Uncheck the proxy server



- Click OK > OK > to get back to the Internet page.
- Click the green arrow icon to refresh the screen.



- You should now have Internet at home.
- When you return to school, you will need to turn the proxy back on:
- Turn on the computer.
- UNCHECK the "Workstation Only" box on the login screen. Login using your regular school username and password.
- Open the Internet > Tools > Internet Options > Connections Tab > Lan Settings > Check the proxy server box > Click OK > Click OK > Refresh the screen.


Before long, the steps will be second nature, and you will be an Internet accessing genius!

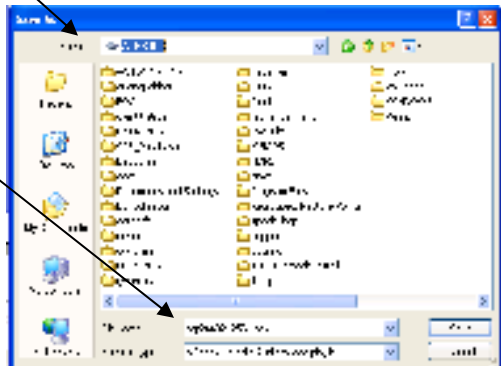
VIDEO STREAMING TIPS

United Streaming has changed its name to Discovery Education Streaming, but it is still chock-full of wonderful educational resources. Here are some tips to make viewing the videos a pleasant experience for both you and your students:

- <http://streaming.discoveryeducation.com/> is the new URL for streaming video, but the old one will continue to work for awhile.
- <http://oneplace.esc11.net> is a new site where you can access simultaneous searches of all the services provided by Region 11: DE Streaming, PowerMediaPlus, EBSCO Host, and Facts on File.
- **Only use the streaming choice to evaluate a video.** Streaming video during class is risky business. Often a streaming video will pause to buffer several times while playing. It is always better to download to your computer and play the video with Windows Media Player.
- **Avoid using a wireless connection to download videos.** This greatly increases the download time.
- **Never store your videos on the network server.** Always download to your hard drive. Storing the videos on a network drive will cause the server to fill up quickly.
- **After viewing the video,** either delete the project OR burn the project to a CD.

To download a Video Clip:

1. **Right-click** on the  of the video or video segment that you have selected to download.
2. **Select** "Save Target As".
3. **Click** on the Down Arrow in the Save In box and select the location.
4. **Rename** the file to reflect the video content.
5. **Click** Save.



The Discovery Education login is the same as the United Streaming login that you have already created. If you do not have an account for Discovery Education or for One Place, contact your Instructional Technologist for the passcodes to set up new accounts.

HELPFUL WEBSITES

LISD was lucky enough to spend a day with Jay McTighe, one of the authors of Understanding by Design. If you missed his workshop, Staff Development has been kind enough to upload his presentation materials on their department website. Go to <http://flash.lisd.net/staffdev/index.htm> to access the materials.

Other Helpful Links:

- TEN GREAT SITES FOR FINDING EDUCATIONAL GAMES:

<http://edugamesblog.wordpress.com/2008/09/14/10-greatsites-for-finding-free-educational-games/>

- FREERICE.COM is an interactive site where students can practice SAT words and donate rice to the UN World food program. Other subjects that kids can quiz themselves on are Art, Chemistry, Grammar, Vocabulary, World Geography, French, German, Italian, Spanish, and Multiplication Tables.

<http://www.freerice.com/>